



Ford Falcon Utilities and Vans





Illustrated above: Falcon 500 Utility with optional full wheel covers (available at extra cost)

Illustrated front cover: Falcon Utility with optional tonneau cover (available at extra cost)

Falcon 500 Utility

Your double life Ute now sets new standards of comfort.



Illustrated: Falcon 500 Utility interior with optional G.S. sports steering wheel (available at extra cost)

Don't let the stylish grille, raking bonnet and new luxury interior fool you for a moment. Falcon 500 Utility is built tough... tough enough to tackle a country as big and challenging as Australia.

With its strong torque box chassis construction, all-steel floor, two-stage seven leaf rear suspension and genuine 680 kg (15 cwt) load capacity you get all the hard working features you need to make light work of tough jobs.

Then there's the passenger compartment—now with contoured, high-backed bucket

seats, with a centre foldaway armrest, and deep pile carpeting. Plus door pull armrests, cockpit style dash—it's all there and more.

Comforting protection features include inertia-reel seat belts, steering column control stalk incorporating turn indicators, lane change warning, hi-lo beam, headlight flasher and horn button and big 285 mm (11.25") turbo-cooled power assisted disc brakes.

And for a ride as smooth as any sedan there's a 453 kg (10 cwt) "Sedan ride" option.



Falcon Utility

Falcon utility is one ute that's far from standard. Cabin comfort now includes a deep-cushioned high-backed bench seat complete with a folding centre armrest.

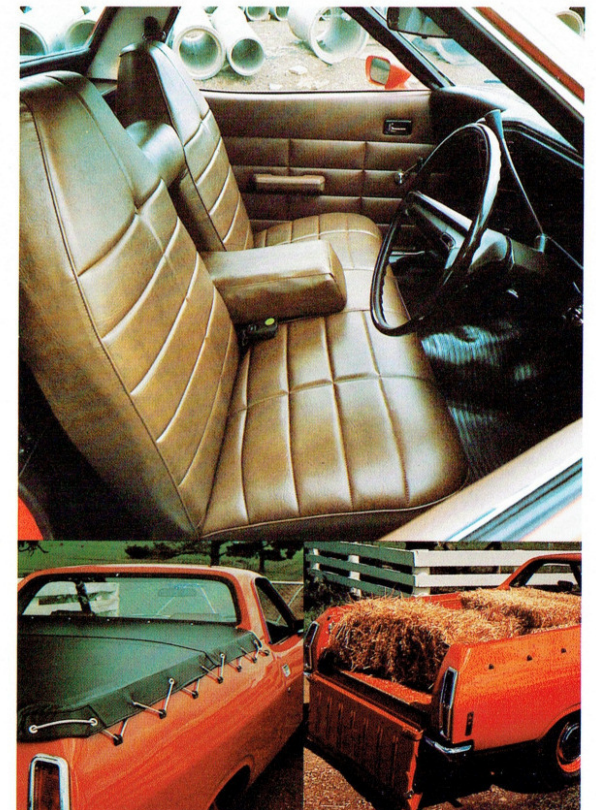
Front wheel power disc brakes and inertia-reel seat belts are part of the comprehensive standard equipment listing too!

And as you'd expect Falcon utility looks after a load every bit as well as it looks after you. In fact, there isn't a longer or wider loading utility in its class. Or an easier utility to load . . . thanks to its two position, full drop down tailgate.

Falcon 500 and Falcon Utility common features:
 3.3 litre (200 CID) 6 cyl engine 3 speed all synchro column change manual transmission • 285.75 mm (11.25") front disc brakes, 254 mm (10") diam. self adjusting rear drum brakes • 7.75 x 14 BSW 4 ply tyres on 6JJ "safety rims" (680 kg (15 cwt) rating) • Inertia reel seat belts • Padded door pull armrests • Lockable glove box • Steering and ignition lock • "Blendaire" heater/demister • Rocker-switch type controls • Wrap-around instrument panel • Steering column stalk control for turn indicators, lane change, hi-lo beam, headlight flasher and horn button • Roof insulation • Full drop down tailgate • 680 kg (15 cwt) carrying capacity.

Additional equipment standard on Falcon utility:
 High backed bench seat with folding centre armrest • Heavy duty floor mat.

Additional equipment standard on Falcon 500:
 Contoured bucket seats with centre armrest • Deep pile carpeting • Interior courtesy light operated by both doors • Cigarette lighter • Tie-down tonneau cover • Side protection mouldings.



Illustrated: Falcon Utility with tonneau cover (available at extra cost)

Printed March 1976



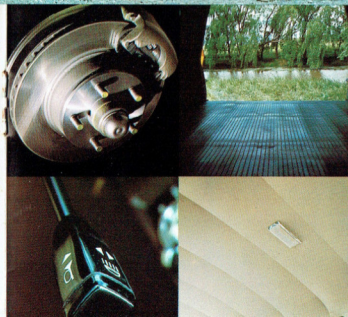
Falcon 500 Van

Your double life van...
now with more standard equipment than ever before.

Falcon 500 Van has been designed with the inbuilt strength and luxury it takes to lead a successful double life. So when you want Falcon 500 to work—it works. And when you want it to play it takes you all the way in first class comfort.

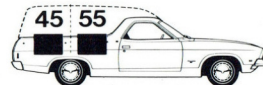
Comfort? The picture on the right tells the story. Falcon 500 Van now has high backed bucket seats with a foldway centre armrest. There's also deep-pile carpeting, lighter, door pull armrests, side glass in the load compartment and headlining that continues for the length of the van—Falcon 500 Van puts luxury into both your double lives.

Illustrated Right:
Falcon 500 Van interior
optional GS sports steering wheel
(available at extra cost)



Strengths include sturdy torque-box chassis construction. A floor that's all steel and protected by a heavy duty rubber mat. Seven leaf two-stage suspension. Load rated wheels and tyres. And for superior ride and handling the bulk of Falcon's load weight is distributed forward of the rear axle.

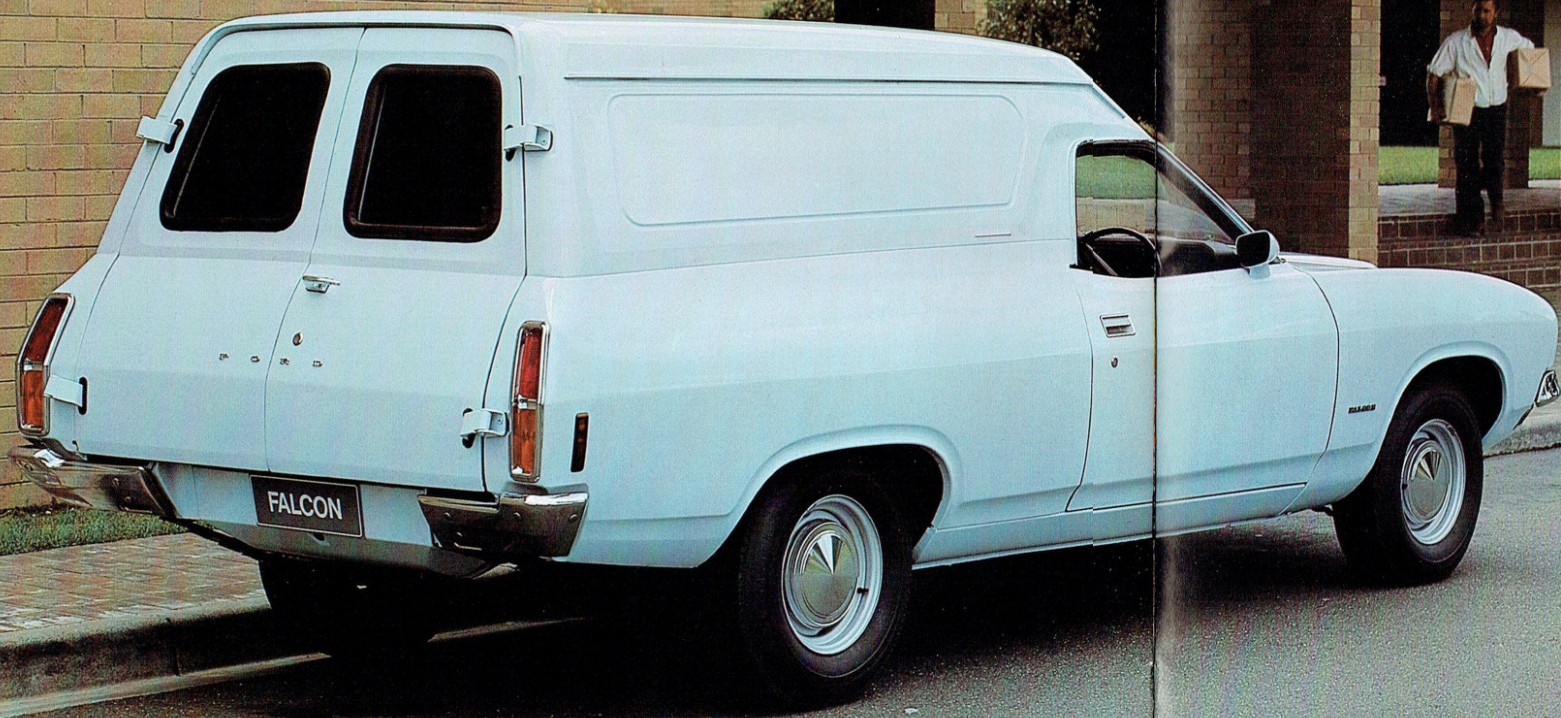
For your protection front wheel power disc brakes are standard. As are inertia-reel seat belts, and a steering column control stalk incorporating turn indicators, lane change warning, hi-lo beam, headlight flasher and horn button.



Illustrated Left:
Disc brakes
Load area
Control stalk
Headlining

Falcon Utility and Van have a 45/55 load weight distribution for superior ride and handling. You'll appreciate just how important this feature is when you're on the job.

Printed March 1976



Falcon Van

Feature for hard-working feature, Falcon Van represents great value for money—on and off the job.

Double opening rear doors complete with dual rear windows open to 90°—with a positive locking stop. And for easy loading on or off a platform they swing open to a full 180°.

More attention than ever before has been focused on interior comfort, finish and features.

The full width bench seat is high-backed and deeply padded, with a centre folding armrest, 'Blendaire' two-speed heater/demister, lockable glovebox, steering column control stalk, and two speed wipers—are just a few more items from Falcon Van's not so standard equipment listing.

Falcon 500 and Falcon Van common features:

3.3 litre (200 CID) 6 cyl engine • 3 speed all synchro column change manual transmission • 285.75 mm (11.25") front disc brakes, 254 mm (10") diam. self adjusting rear drum brakes • 7.75 x 14 BSW 4 ply tyres on 6JJ "safety rims" (680 kg (15 cwt)) • Inertia reel seat belts • Padded door pull armrests • Lockable glovebox • Steering and ignition lock • 'Blendaire' heater/demister • Rocker-switch type controls • Wrap-around instrument panel • Steering column stalk control for turn indicators, lane-change, hi-lo beam, headlight flasher and horn • Roof insulation • Rear opening doors with panel windows • 680 kg (15 cwt) carrying capacity.

Falcon 500 standard equipment includes the following additional items:

Contoured bucket seats with foldaway centre armrest • Interior courtesy light operated by both doors • Cigarette lighter • Complete headlining in load area • Floor mat in load area • Interior paint in load area.



Add some dash to your double life

Your business is your business. You know best what you want your Double Life ute or van to do. So Ford gives you a range of options to choose from.

There's a smooth-changing, four-on-the-floor transmission. Your choice of four engines: two big V8's and two smooth sixes. High-intensity, quartz halogen driving lights integrated in the bold grille.

An underbody protection package. A wide choice of colours and interior trims. Air conditioning. Bucket seats. The GS rally pack for Falcon 500 utes and vans that includes bold GS body stripes, comprehensive dashboard instrumentation and a GT bonnet complete with "NASA" air scoops and bonnet locking pins. And your choice of radial ply tyres with the 453 kg

(10 cwt) sedan ride option.

Finally, when you settle on a Falcon utility or van you can be certain that you've put your money on a well built commercial. In fact Falcon's the ideal commercial for you and your Double Life!

Illustrated: Falcon 500 Utility and Van with optional GS pack and Red Wall Radial Tyres (available at extra cost)

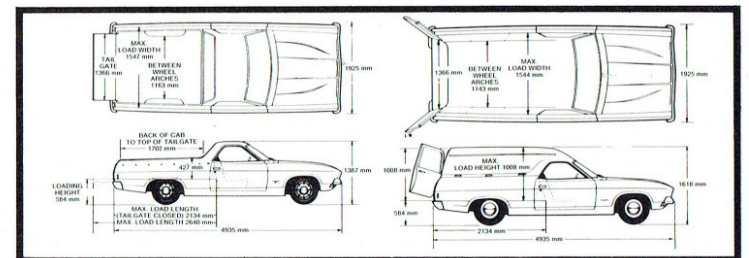


Extra cost options illustrated above
Push button radio and air conditioning
GS dash
Driving lights
Mag wheels
4-Speed floorshift Transmission

OPTION AVAILABILITY

	UTILITY		VAN	
	Falcon	Falcon 500	Falcon	Falcon 500
LUXURY EQUIPMENT				
Variable ratio power steering	Opt	Opt	Opt	Opt
Integrated Air-conditioning (a)	Opt	Opt	Opt	Opt
Deep-pile carpeting	Opt	Std	Opt	Std
Bucket seat with foldaway centre armrest	Opt	Std	Opt	Std
Bucket seat with sports console armrest (b)	Opt	Opt	Opt	Opt
11-transistor push-button radio	Opt	Opt	Opt	Opt
7-transistor manual radio	Opt	Opt	Opt	Opt
Electric clock	Opt	Opt	Opt	Opt
Bench seat with folding centre armrest	Std	NCO	Std	NCO
Rubber floor mat	Std	O/R	Std	O/R
PERFORMANCE EQUIPMENT				
152.4 mm (6") Mag type sports road wheels	Opt	Opt	Opt	Opt
453 kg (10 cwt) 'Sedan Ride'	Opt	Opt	Opt	Opt
Limited-slip differential (mandatory with 5.8 litre (351 CID))	Opt	Opt	Opt	Opt
Quartz-iodine driving lights (incorporated in grille)	Opt	Opt	Opt	Opt
Outback Package: Heavy-duty Shock absorbers with protection plates; engine stone guard; Heavy-duty aircleaner	Opt	Opt	Opt	Opt
EXTERIOR/APPEARANCE ITEMS				
Grand Sport Rally Pack: bold side-stripes; styled steel wheels; woodgrain steering wheel — full GT instrumentation; GT hood with NASA scoops	NA	Opt	Opt	Opt
Front bumper overrides with black rubber inserts	NA	Opt	NA	Opt
Protection group	Opt	NA	Opt	NA
Styled full wheel covers	Opt	Opt	Opt	Opt
Remote-control styled exterior mirror (driver's side)	Opt	Opt	Opt	Opt
Laminated/graduated tint windscreen	Opt	Opt	Opt	Opt
Van side glass	NA	NA	Opt	Std
Tie-down tonneau cover	Opt	Std	NA	NA
POWER-TRAIN COMBINATIONS				
3.3 litre (200 CID) 'Six' with: All synchro 3 speed manual (column)	Std	Std	Std	Std
4.1 litre (250 CID) 'Six' with: All synchro 3 speed manual (column)	Opt	Opt	Opt	Opt
All synchro 4 on the floor manual	Opt	Opt	Opt	Opt
SelectShift Cruisomatic (column)	Opt	Opt	Opt	Opt
SelectShift Cruisomatic T-Bar	Opt	Opt	Opt	Opt
4.9 litre (302 CID) V8 with: All synchro 4 on the floor manual	Opt	Opt	Opt	Opt
SelectShift Cruisomatic (column)	Opt	Opt	Opt	Opt
SelectShift Cruisomatic T-Bar	Opt	Opt	Opt	Opt
5.8 litre (351 CID) V8 Available in: 453 kg (10 cwt) ute and van only				
All synchro 4 on the floor manual	Opt	Opt	NA	NA
SelectShift Cruisomatic (column)	Opt	Opt	NA	NA
SelectShift Cruisomatic T-Bar	Opt	Opt	NA	NA
WHEELS AND TYRES				
7.35 x 14 WSW 4 ply 6JJ Safety rims (453 kg (10 cwt) ute only)	Opt	Opt	Opt	Opt
185 x 14 BSW Radial Ply 6JJ Safety rims (453 kg (10 cwt) ute only)	Opt	Opt	Opt	Opt
ER70H14 RSW Wide Oval Radial Ply 6JJ Safety rims (453 kg (10 cwt) ute only)	Opt	Opt	Opt	Opt

NO TYRE OPTIONS AVAILABLE WITH 680 kg (15 cwt) UTE OR VAN
Notes: (a) Air-conditioning available only with 4.1 litre (250 CID) '6' and V8 engines.
(b) Sports console must be fitted with optional floor-mounted transmissions and is not available with full-width seat.
"OPT" means optional at extra cost. "NA" means not available on that model.
"NCO" means no cost option. "O/R" means optional at reduced cost.



Specifications:

ENGINES	3.3 litre (200 CID) Six	4.1 litre (250 CID) Single Barrel	4.9 litre (302 CID) 2 Barrel	5.8 litre (351 CID) 2 Barrel
Carburettor Displacement	3280	4100	4950	5750
Cubic Cap. Bore	(200 in ³) 93.47 mm (3.68")	(250 in ³) 93.47 mm (3.68")	(302 in ³) 101.6 mm (4.0")	(351 in ³) 101.6 mm (4.0")
Stroke	x 79.50 mm (3.13")	x 99.31 (3.91")	x 76.2 mm (3.0")	x 88.9 mm (3.5")
Compression	8.8:1	9.1:1	9.4:1	9.1:1

Note: 5.8 litre (351 CID) V8 available 453 kg (10 cwt) Utility only.

ENGINE FEATURES: Up to 10,000 kilometre oil changes; 12-volt electrical system; 54 plate 46 amp/hour battery; 35 amp heavy-duty alternator; corrosion resistant muffler.

CLUTCH: (Manual Transmission): Diaphragm spring type, single cushion disc, dry plate, hydraulically operated. 3.3 litre (200 CID) and 4.1 litre (250 CID) 6 cylinder engine: Diam. 241 mm (9.5"). Friction area 503 mm (78 in²). 4.9 litre (302 CID) 8 cylinder engine and 5.8 litre (351 CID) 2V 8 cylinder engine: Diam. 241 mm (9.5"). Twin Plate. Friction area 1100 mm² (170.4 in²).

MANUAL TRANSMISSION: 3 forward gears all synchro—1 reverse. Steering column change. Ratios (to 1) 6 cylinder engines: 1st—2.95, 2nd—1.69, Top—1.00, Reverse—3.67. 8 cylinder engines (all synchromesh): 1st—2.71, 2nd—1.69, Top—1.00, Reverse—3.37. 4 forward speeds—1 reverse. Floor change, all synchromesh. Ratio (to 1) 1st—2.82, 2nd—1.84, 3rd—1.32, Top—1.00, Reverse—2.56.

CRUISEOMATIC TRANSMISSION: Three speed automatic with Select-Shift operation to provide both manual and automatic operation. Ratios—Six cylinder: 1st—2.39, 2nd—1.45, 3rd—1.00, Reverse—2.09. Eight cylinder engine ratios (to 1): 1st—2.46, 2nd—1.46, Top—1.00, Reverse—2.20.

REAR AXLE: Ratios—3.3 litre (200 CID) 3.50:1, 196.85 mm (7.75") diameter ring gear; 4.1 litre (250 CID) 3.23:1; 4.9 litre (302 CID) 2.92:1, 190.5 mm (7.5") diameter ring gear. 5.8 litre (351 CID) Manual 3.00:1; Cruisomatic 2.75:1 with 226.6 mm (9.0") diameter ring gear.

FRONT SUSPENSION: Angle-poised ball-joint type. Heavy-duty coil springs with internally mounted hydraulic double-acting shock absorbers. Torsion bar ride stabilizer.

REAR SUSPENSION: Semi-elliptic asymmetrical 2-stage 7-leaf variable rate leaf springs. Diagonally mounted hydraulic double-acting shock absorbers. Rubber bushed shackles. 453 kg (10 cwt) option has 6-leaf springs.

BRAKES: Dual line system with inbuilt warning light on instrument panel. Floating caliper-type disc front brakes, turbo cooled and ventilated 285.75 mm (11.25") diam. — non power (power discs optional). Self adjusting hydraulic 254 mm (10") x 44.45 mm (1.75") rear drums with bonded linings.

STEERING: Recirculating ball type steering. Gear ratio. Manual 20:1. Also variable ratio power steering optional. Steering wheel 406.4 mm (16") diam.

WHEELS: 14" x 6JJ, pressed steel, ventilated disc, safety rims, 5-stud mounting type.

Printed March 1976

Wheelbase	2946 mm (116")
Track—front	1536 mm (60.5")
—rear	1524 mm (60.0")
Ground clearance	162 mm (6.4")
Max. load length (tailgate down)	2700 mm (106.3")
Max. load length (tailgate closed)	2133 mm (84")
Max. loading height (unladen)	584 mm (23")
GVM (Utility)	453 kg (10 cwt)
6 cylinder engine	1905 kg (4200 lb)
V8 engine	1995 kg (4400 lb)
GVM (Van)	453 kg (10 cwt)
6 cylinder engine	1973 kg (4350 lb)
V8 engine	2063 kg (4550 lb)
Fuel Tank capacity	72.7 litres (15 gall)
Turning circle	12.5 m (41.2")
Cubic Capacity Van	2.7 m ³ (96 ft ³)

DRIVER AND PASSENGER PROTECTION:

The following items are built-in to all Falcon models to minimise the likelihood of an accident occurring—and personal injury in the event of an accident • inertia reel front seat belts • front disc brakes • high-backed front seats • deeply-recessed, padded instrument panel • rocker-switch type controls • windshield-mounted, break-away, anti-glare interior rear-view mirror • 'Blendaire' heater/demister (2-speed) • collapsible steering column • impact-absorbing steering wheel with full-width padded hub • controlled collapsible front end • padded sunvisors • padded door-pull armrests • double-grip "steeery" door locks • recessed interior door handles • 2-speed electric windscreen wipers • non-lift, non-reflective wiper blades • push button electric windscreen washers • "zone-toughened" windscreen, thick "safety glass" all other windows • dual hydraulic brake system with warning light • two exterior styled rear-vision mirrors • "wrap-around" wheels • high-intensity headlights • reversing lights • safety-rims front and rear turn lights • flush-mounted exterior door handles • seat belts: 2 lap-sash, 1 lap on full-width seat models; 2 lap-sash on bucket seat models.

FORD WARRANTY:

Subject to such other conditions, warranties and/or undertakings which may apply from time to time under the laws of Australia and/or any applicable State or Territory thereof, FORD WARRANTS with respect to each new commercial vehicle sold by Ford, that for a period of 12 months or 20,000 kilometres (whichever first occurs) from the date of original retail sale, FORD WILL repair or replace free of charge any part of such vehicle (except tyres) found to be defective in factory materials or workmanship under normal use and operation within Australia, PROVIDED THAT:—

- (i) the vehicle has been properly used, operated, maintained and cared for within the manufacturer's operation and capacity limitations, and
- (ii) the repair or replacement is carried out by an authorised Ford Dealer.

*"Ford" means, Ford Sales Company of Australia Limited.

PLEASE NOTE:

The illustrations, information and specifications presented and referred to herein were correct at the time when this publication was approved for printing; however, Ford Motor Company of Australia Limited and/or Ford Sales Company of Australia Limited reserve(s) the right, subject to the laws of Australia and/or any applicable State or Territory thereof and/or the regulations of any competent authority which may apply from time to time, at their or its discretion, and without notice, to discontinue or change the specifications, design and prices of the products referred to herein and any options therefor at any time without incurring any liability whatsoever to any purchaser thereof.

Some of the items illustrated or referred to herein are optional at extra cost. Some options may be required in combination with other options. Always consult your Ford Dealer for the latest information on models, specifications, features, prices, options and availability.

FORD MOTOR COMPANY OF AUSTRALIA LIMITED.
FORD SALES COMPANY OF AUSTRALIA LIMITED.
1735 Rodney Road, Campbellfield, Victoria.

FORD FALCON



Illustrated: Falcon 800 Utility and Van with optional GS pack and Red Wall Radial Tyres (available at extra cost).