

FORD CARS

Ford Cars Catalogue February 1980



Ford Sales Company of Australia Limited



INTRODUCTION AND INDEX

This comprehensive catalogue is designed to introduce you to the wide range of Ford cars available in Australia.

It contains:

- Illustrations
- Brief descriptions
- List of selected standard equipment
- Various technical specifications
- A selection of the extra cost options available for each of the models referred to.

As changes may be made from time to time to the range of products, and their specifications, including without limitation, paint and trim colours and combinations, standard equipment levels and availability, always consult your Ford Dealer for the latest information before deciding to place your order.

INDEX:

Ford Escort Range	Page 2
Ford Cortina Range	Page 13
Ford Falcon Range	Page 25
Ford Fairlane	Page 43
Ford Light Commercial and Recreational Vehicles	Page 51
Ford Car Range	Page 63
Ford Courtesy Car Scheme	Page 64

A separate catalogue is available for Ford LTD. Please consult your Ford Dealer for details and information.

Ford Escort. Ford's European Formula Small Car.



Illustrated above: Ford Escort L, 4 door sedan.
Illustrated front cover: Ford Fairlane

FORD ESCORT 1.6 L SEDAN Economy and style in classic harmony.

Here is European style, flair and features to make driving a real pleasure—in a choice of 2-door or 4-door models.

Escort L is powered by an economical 1.6 litre cross-flow engine that's equally at home around town or on the open highway. This power is matched to a 4-speed floor shift transmission that's great to handle.

Your comfort is taken care of with reclining front bucket seats, carpet and directional ventilation.

FORD ESCORT L STANDARD EQUIPMENT HIGHLIGHTS:

- 1.6 litre crossflow 4-cylinder engine
- 4-speed manual floor shift transmission
- Power assisted front disc brakes

- Styled steel road wheels
- 155SR13 radial ply tyres
- Reclining front bucket seats with vinyl upholstery
- Inertia reel front seat belts.
- Prismatic day/night interior rear-view mirror
- Directional power boosted ventilation
- 2-speed heater/demister with illuminated slide controls
- 2-speed windscreen wipers and 2-jet washers
- Steering column control stalks for
 - Turn/lane change signals, high/low beam, headlight flasher, horn control
 - 'Flick-wipe' windscreen wiper/washer
 - Parking and headlights
- Carpeted passenger compartment floor
- Bodyside protection mouldings
- Styled right hand exterior rear-view mirror
- Interior courtesy light operated by front doors
- Front passenger side parcel shelf
- Driver's side trinket tray
- Tinted rear window
- Hazard flashers



Illustrated above: Ford Escort L 2 door sedan

FORD ESCORT 1.6 LITRE GL & 2 LITRE GL Well appointed with European flair

Available in 2 door and 4 door form, there's even more to get excited about in Ford Escort GL. You've a choice of 1.6 litre and 2 litre models. In addition to a 'soft-feel' steering wheel, reclining front bucket seats and carpet, there's a handy centre console with an AM push-button radio. Flick on the headlights and you'll make another discovery too—GL has rectangular quartz halogen headlights for brighter night driving. Among other items are bumper rub strips for added protection and intermittent windscreen wipers.

Whichever model you choose, it comes with a sporty 4-speed manual floor shift, or you can opt for the 3-speed T-bar automatic (available at extra cost). And you feel in con-



trol with GL's responsive rack-and-pinion steering, radial ply tyres and power assisted front disc brakes.

If you appreciate plenty of features with European style and flair then Ford Escort GL is your car.

FORD ESCORT STANDARD EQUIPMENT HIGHLIGHTS:

As for Escort L but with the upgraded feature of:

- Quartz halogen headlights
- And with these additional features which are not standard equipment on Escort L:
- AM push-button radio
- Electric rear window demister
- 'Soft-feel' steering wheel
- Intermittent windscreen wipers
- Styled remote control right hand rear-view mirror
- Centre console
- Bumper rub strips
- Outboard passenger grab handles
- Cigarette lighter
- Luggage compartment light



Illustrated above: Ford Escort GL 4 door sedan



Illustrated above: Ford Escort Ghia interior with optional 3-speed T-bar automatic transmission (available at extra cost).

FORD ESCORT 2 LITRE GHIA

**Just about everything you can think of
in a small car has been thought of.**

With seating upholstered in imported cloth; timber veneer dash; tinted side and rear windows; interior quietness; full alloy road wheels and exhilarating performance from its 2 litre overhead cam engine, Escort Ghia is a car that has to be sat in and driven to be fully appreciated.

FORD ESCORT GHIA STANDARD EQUIPMENT HIGHLIGHTS:

As for Escort 2 litre GL but with these different and/or upgraded features:

- Full alloy road wheels
- ZR78S 13 steel belt radial ply tyres
- Carpeted kick pads on doors
- Imported Verona and Cashmere cloth seat upholstery
- Dual tone horn
- Tinted-band, laminated windscreen
- Carpeted floor in luggage compartment
- Cut pile carpet on passenger compartment floor and with these additional features which are not standard equipment on Escort GL:
- Tinted side windows
- Electric clock
- Timber veneer fascia panel on dash
- Tachometer and trip meter
- Styled left hand exterior rear-view mirror
- Vanity mirror in passenger sun visor
- Vinyl roof
- Front and rear bumper overriders



FORD ESCORT RS 2000 Street Legal

Ease into the cloth Scheel seats. Look around, it's all there. Tacho. Oil pressure gauge. 3-spoke sports wheel. Short-throw shift. Grab handles. Electric rear window demister. AM push-button radio.

Turn the key. A 2-litre OHC engine comes alive. Feel it respond. Tight sports suspension. Steel road wheels. ZR70S13 steel-belted radials. Front power discs. Handling and performance to match.

From twin headlights to boot spoiler, it's set to go!

NOTE:

The Australian RS2000 differs from the European model in engine and other specifications. The engine is modified for Australian design rule compliance, and the suspension has been developed for Australian conditions.

FORD ESCORT RS2000

STANDARD EQUIPMENT HIGHLIGHTS:

- 2 litre overhead cam 4-cylinder engine
- 4-speed manual floor shift transmission
- Short-throw gear shift
- Power assisted front disc brakes
- Sports suspension
- Styled steel road wheels
- ZR70S13 steel belt radial ply tyres
- Hi-back Scheel reclining front buckets

- Front and rear seats faced in black Beta plus cloth
 - Sports steering wheel
 - Sports instrumentation including tachometer and oil pressure gauge
 - AM push-button radio
 - Centre console
 - 2-speed windscreen wipers with flick-wipe
 - Black right hand side remote control exterior rear-view mirror
 - Black left hand side exterior rear-view mirror
 - Hazard flashers
 - Cigarette lighter
 - Glove box
 - Outboard passenger grab handles
 - RIM front end incorporating spoiler
 - Black decklid spoiler
 - Blackout treatment on rear bumper and quarter extensions, rocker panel, window frames, B pillar and door handles
 - Twin quartz halogen headlights
 - Standout striping and marque decals
- Available in 2-door and 4-door models with a choice of 5 bold colours

Illustrated: Ford Escort RS2000 with optional "Volante" sports alloy road wheels and laminated windscreen (available at extra cost).



FORD ESCORT GL FASHION PACK*

Hold it...lovely...click, click, click...that's super...that's the Escort GL Fashion Pack*.

Designed to turn heads, the GL Fashion Pack* includes:

- striped cloth seat facings
- styled left hand exterior rear-view mirror
- colour-keyed bodyside tape stripe
- vanity mirror in passenger sun visor
- bright wheel centre piece and chrome wheel nuts
- electric clock. All these features are additional to Ford Escort GL equipment.

*Available at extra cost



Illustrated above: Ford Escort GL with optional GL Fashion Pack (available at extra cost).



Illustrated above: Ford Escort 2 litre sedan with optional Sports Pack.

FORD ESCORT SPORTS PACK*

If you're looking for something special in a small car, check out the Escort sedan equipped with a Sports Pack*.

SPORTS PACK INCLUDES THESE FEATURES:

- Sports steering wheel
- Tachometer
- Black front spoiler
- Black front quarter bumpers
- Black window frames
- Black 'B' pillars
- Black rear bumper
- Black RH exterior mirror
- Rear decklid spoiler
- Black door handles

*Available at extra cost on Escort L sedan and Escort GL sedan.

Note: Gold finished styled steel road wheels (as shown left) are being progressively replaced by standard Argent finished styled steel road wheels. Consult your Authorised Ford Dealer for the latest information before placing your order.

FORD ESCORT L AND GL VANS

A great capacity for work

FORD ESCORT L VAN
STANDARD EQUIPMENT
HIGHLIGHTS:

- 1.6 litre crossflow 4-cylinder engine
- 4-speed manual floor shift transmission
- Power assisted front disc brakes
- Styled steel road wheels
- Y78L13 crossply tyres
- Front bucket seats with vinyl upholstery
- Outboard inertia reel front seat belts
- Prismatic day/night interior rear-view mirror
- Directional power boosted ventilation
- 2-speed heater/demister with illuminated slide controls
- 2-speed windscreen wipers and 2-jet washers
- Steering column control stalks for
 - Turn/lane change signals, high/low beam, headlight flasher, horn button
 - 'Flick-wipe' windscreen wiper/washer
 - Parking and headlights
- Styled right and left hand exterior rear-view mirrors

- Interior courtesy light operated by front doors
- Front passenger side parcel shelf
- Driver's side trinket tray
- Hazard flashers
- Rubber floor mat in passenger compartment

FORD ESCORT GL VAN
STANDARD EQUIPMENT
HIGHLIGHTS:

As for Escort L Van but with

these additional features which are not standard on Escort L Van:

- Quartz halogen headlights
- AM push-button radio
- Centre console
- Cigarette lighter (illuminated)
- Bumper rub strips
- 155SR13 radial ply tyres
- Loop pile carpeting in passenger compartment
- Rear load area rubber mat
- Rear load area headlining
- Van side glass



Illustrated above: Ford Escort L Van

Illustrated below: Ford Escort GL Van



Ford Escort L and GL Sedans and Vans, and Ghia Sedan Options and Specifications

(Options are at extra cost)

CONVENIENCE EQUIPMENT	Escort L Sedan	Escort L Van	Escort GL Sedan	Escort GL Van	Escort Sundowner Van	Escort Ghia	RS2000
Integrated air-conditioning	(a) NA	NA	OPT	OPT	OPT	OPT	NA
AM Radio/Stereo Cassette	NA	NA	OPT	NA	NA	OPT	OPT
SPORTS EQUIPMENT							
Sports Pack	(b) OPT	NA	OPT	NA	NA	NA	NA
Tinted-band, laminated windscreen	OPT	OPT	OPT	OPT	OPT	STD	OPT
Long-range driving lights	OPT	OPT	OPT	OPT	STD	OPT	NA
Sports handling suspension	(c) NA	NA	OPT	NA	NA	OPT	STD
"Volante" sports alloy road wheels	(d) OPT	OPT	OPT	OPT	OPT	NA	OPT
Black front spoiler	OPT	NA	OPT	NA	NA	NA	NA
APPEARANCE EQUIPMENT							
GL Fashion Pack	(e) NA	NA	OPT	NA	NA	NA	NA
Metallic paint	(f) OPT	OPT	OPT	OPT	OPT	NCO	NA
Van sideglass	NA	OPT	NA	STD	NA	NA	NA
Delete van sideglass	NA	NA	NA	O/R	NA	NA	NA

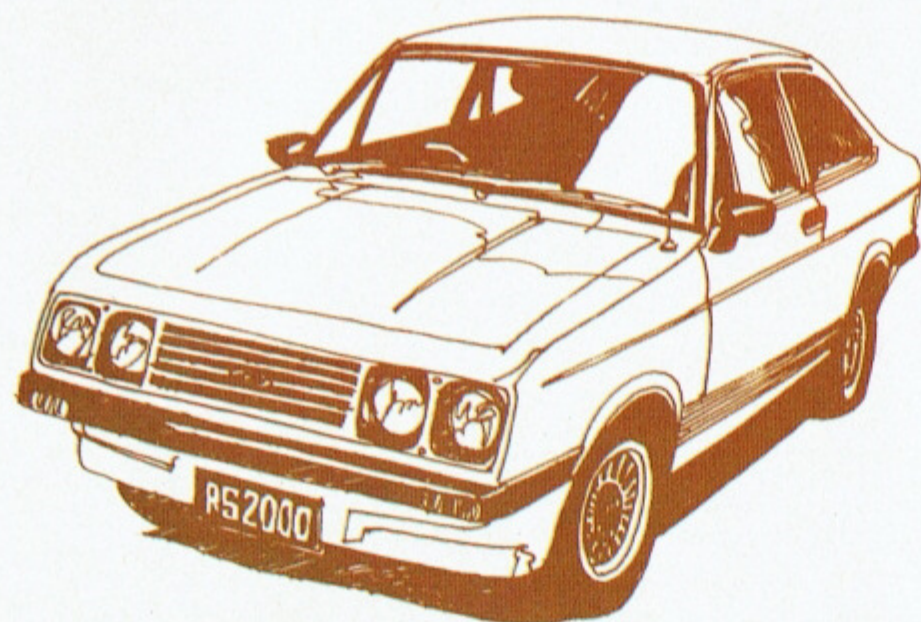
ENGINE AND TRANSMISSION COMBINATIONS	Escort L Sedan	Escort L Van	Escort GL Sedan	Escort GL Van	Escort Sundowner Van	Escort Ghia	RS2000
1.6 litre crossflow 4-cylinder with:							
4-speed manual floorshift	STD	STD	STD	STD	STD	NA	NA
3-speed T-bar automatic	(g) OPT	OPT	OPT	NA	OPT	NA	NA
2 litre crossflow 4-cylinder with:							
4-speed manual floorshift	NA	NA	OPT	OPT	OPT	STD	STD
3-speed T-bar automatic	NA	NA	OPT	OPT	OPT	OPT	NA

TYRE AVAILABILITY	Escort L Sedan	Escort L Van	Escort GL Sedan	Escort GL Van	Escort Sundowner Van	Escort Ghia	RS2000
Y78L 13 crossply tyres	NA	STD	NA	NA	NA	NA	NA
155SR 13 radial ply tyres	STD	OPT	STD	STD	NA	NA	NA
ZR78S 13 steel belt radial ply tyres	(h) OPT	NA	OPT	NA	NA	STD	NA
ZR70S 13 steel belt radial ply tyres	OPT	OPT	OPT	OPT	STD	OPT	STD

DIMENSIONS	Sedans		Vans
	Escort Ghia	Escort L & GL	Escort L & GL
Overall length	4059 mm (159.8")	3978 mm (156.6")	3978 mm (156.6")
Overall width	1596 mm (62.8")	1565 mm (61.6")	1565 mm (61.6")
Overall height	1373 mm (54.1")	1373 mm (54.1")	1545 mm (60.8")
Wheelbase	2405 mm (94.7")	2405 mm (94.7")	2405 mm (94.7")
Track - front	1270 mm (50.0")	1270 mm (50.0")	1270 mm (50.0")
Track - rear	1296 mm (51.0")	1296 mm (51.0")	1296 mm (51.0")
Fuel tank capacity	54.6 ltrs (12 gals)	54.6 ltrs (12 gals)	54.6 ltrs (12 gals)
Luggage capacity - maximum	0.34 m ³ (11.9 ft ³)	0.34 m ³ (11.9 ft ³)	2.04 m ³ (72.0 ft ³)
Turning circle - curb to curb	8.9 m (29.2 ft)	8.9 m (29.2 ft)	8.9 m (29.2 ft)

ENGINE SPECIFICATIONS	1.6 litre	2 litre
Engine displacement (cc)	1598	1998
Bore (mm)	81.0	90.8
Stroke (mm)	77.6	76.9
Compression ratio (to 1)	8.0:1	9.2:1
Max power (DIN)	46 kw (61 hp) at 5000 rpm	70 kw (94 hp) at 5200 rpm
Max torque (DIN)	110 Nm (81 lb ft) at 2500 rpm	148 Nm (109 lb ft) at 3800 rpm

Please note: All measurements, dimensions and capacities referred to above are approximate only.



Footnotes to charts on left:

- (a) Integrated air conditioning is available only with the 2 litre engine and includes tinted side and rear glass as standard. (Tinted side and rear glass not available on vans.) Tinted side and rear glass is not included as part of a Dealer-fitted air conditioning package.
- (b) Sports Pack comprises: black quarter front bumpers, black rear bumper, sports steering wheel, tachometer, black paint treatment, black-finish right hand exterior mirror, black front spoiler and black rear decklid spoiler.
- (c) Sports handling suspension is available only with 2-litre sedans and comprises: Stiffer spring and shock absorber settings, increased diameter front anti-roll bar and a rear anti-roll bar.
- (d) Steel belt radials are mandatory at extra cost when "Volante" sports alloy road wheels are specified.
- (e) GL Fashion Pack comprises: Vanity mirror in passenger side sun visor, colour-keyed bodyside tape stripe, striped cloth seat facings, styled left hand exterior rear-view mirror, electric clock, bright wheel centrepiece, chrome wheel nuts and colour theme for exterior stripe. Cadiz cloth is colour co-ordinated to exterior paint colour.
- (f) Consult the Ford Colour Selector or your Authorised Ford Dealer to determine which colours are available in metallic paint.
- (g) 3-speed T-bar automatic transmission is not available on the following models: Escort 1.6 litre 2 door L sedan Escort 1.6 litre 2 door GL sedan Escort 2.0 litre RS2000 Escort 1.6 litre GL van.
- (h) ZR78S 13 steel belt radials are fitted as standard to 2-litre models and are optional at extra cost on 1.6 litre models.

Codes to charts on left:
STD means standard equipment.
OPT means optional at extra cost.
NA means not available on this model.
NCO means no cost option.
O/R means optional at reduced cost.

Always discuss your intended purchase carefully with your Authorised Ford Dealer before placing your order.

Ford Cortina. Drive it...it makes beautiful sense.



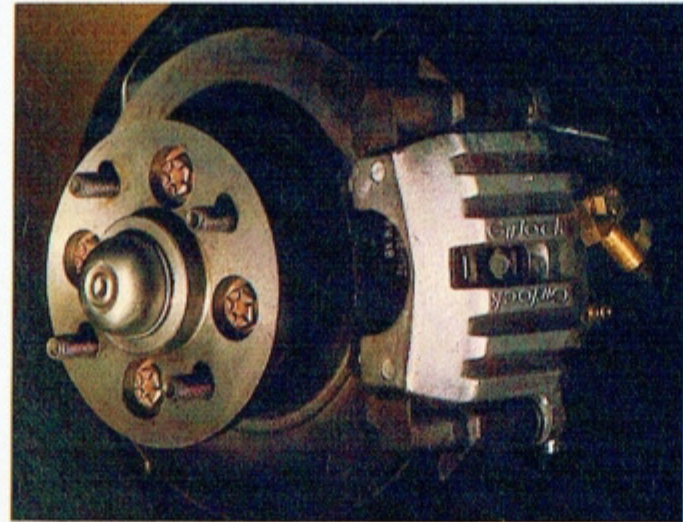
Illustrated above: Ford Cortina Ghia Sedan.



Interior shown with optional 3-speed T-bar automatic transmission (available at extra cost).



Steel belt radial ply tyres.



Power assisted front disc brakes.

FORD CORTINA L

Everyone these days has a keen sense for value. And one sure way to bring it right out into the open is to get behind the wheel of a Cortina L. Here is neatly tailored simplicity in a size for today's out-and-about living. Beautifully compact on the outside for tight responsive manoeuvring. Yet spacious and comfortably appointed inside, with a list of equipment that may be considered luxurious by some, but it simply makes beautiful sense. Particularly when you consider Cortina L's price-tag. Available in a choice of 4 or 6 cylinder engines.

FORD CORTINA L STANDARD EQUIPMENT HIGHLIGHTS:

- Steel, slotted road wheels
- Steel belt radial ply tyres
- Power assisted front disc brakes
- Reclining front bucket seats with vinyl upholstery
- Inertia reel front seat belts
- Carpeted passenger compartment floor
- Directional, power-booster ventilation
- Styled right hand exterior rear-view mirror
- Quartz halogen headlights
- Deep-section bumper bars with protective rubber end caps
- Interior courtesy lights operated by front doors
- 3-speed heater/demister
- Lockable glove box
- Cigarette lighter (illuminated)
- Prismatic day/night interior rear-view mirror
- Black, non-glare windscreen wipers
- Front fender side-marker lights
- Steering column control stalks for
 - (i) Turn/lane change signals, high/low beam, headlight flasher and horn button
 - (ii) Windscreen wash/wipe



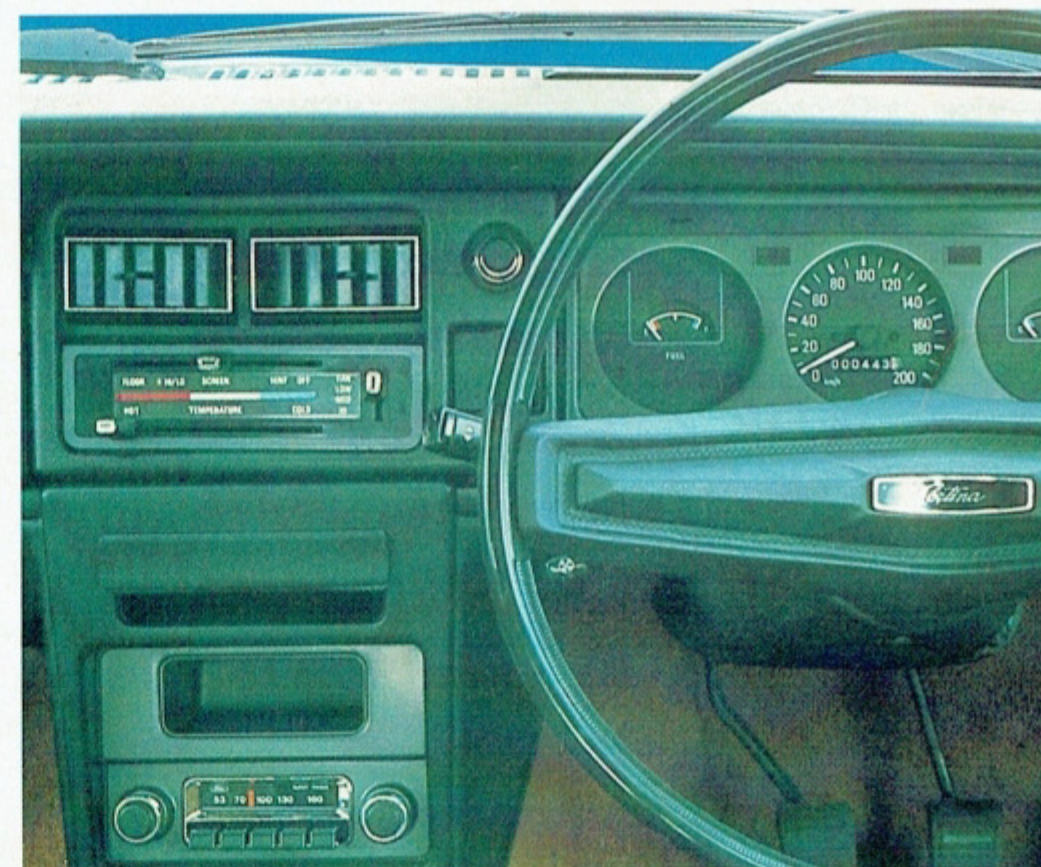
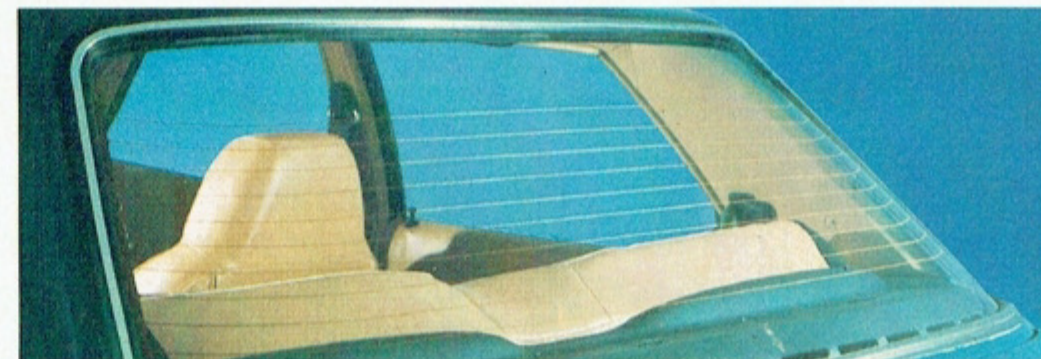
FORD CORTINA GL

A car that's beautiful to look at and to drive is all very well, but there's more to motoring than looking good and feeling good behind the wheel.

A very big consideration with the Cortina GL is its comprehensive feature level.

It packs as much room, comfort, riding-quality and performance into its clean, uncluttered lines as some cars costing considerably more. Handles and tracks beautifully. And has a long list of standard equipment.

Therefore, it lets you set your standards high - without you having to pay a high price. Available in a choice of 4 or 6 cylinder engines.



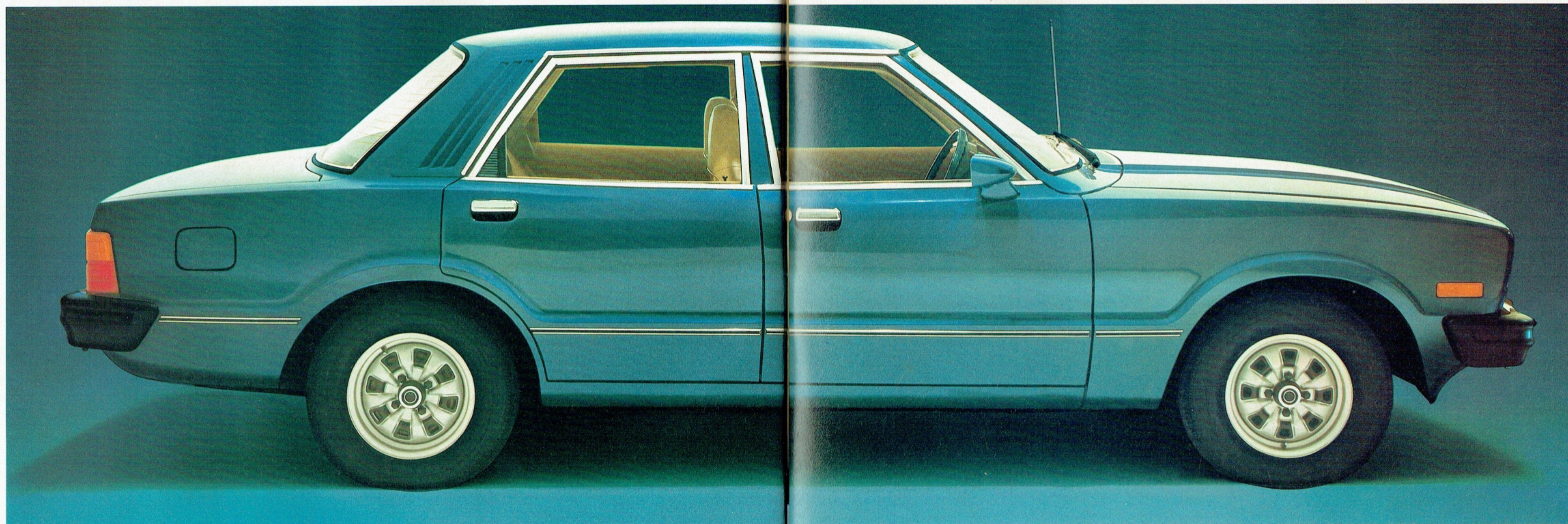
FORD CORTINA GL STANDARD EQUIPMENT HIGHLIGHTS:

As for Cortina L but with these different and/or upgraded features:

- Styled steel road wheels
- Interior courtesy light operated by front and rear doors

and with these additional features which are not standard equipment on Cortina L:

- Front centre console
- Electric rear window demister
- AM push-button radio
- Electric clock
- Outboard passenger grab handles
- Rear seat folding centre armrest
- Bodyside protection mouldings



FORD CORTINA L and GL WAGONS

Versatile, strong and spacious... that sums up the Cortina Wagons. Whichever model you choose, L or GL, use it as a freedom machine, a work-horse, a shopping basket, for delivering the kids or whatever. It offers you a lot of loadspace. A rear opening that's wide and deep, and a tailgate that swings up in one easy action.

It offers you the same manoeuvrability of the Cortina sedans, too. The same tight turning circle. The same rack-and-pinion steering, power assisted front disc brakes and wide track. Combine those attributes with its list of standard appointments and you begin to get the idea it's in a class of its own. And you're right.

FORD CORTINA L WAGON STANDARD EQUIPMENT HIGHLIGHTS:

- Steel, slotted road wheels
- Power assisted front disc brakes
- BR78S13 steel belt radial ply tyres
- Reclining front bucket seats with vinyl upholstery
- Carpeted passenger compartment floor
- Directional, power-booster ventilation
- Styled right hand exterior rear-view mirror
- Quartz halogen headlights

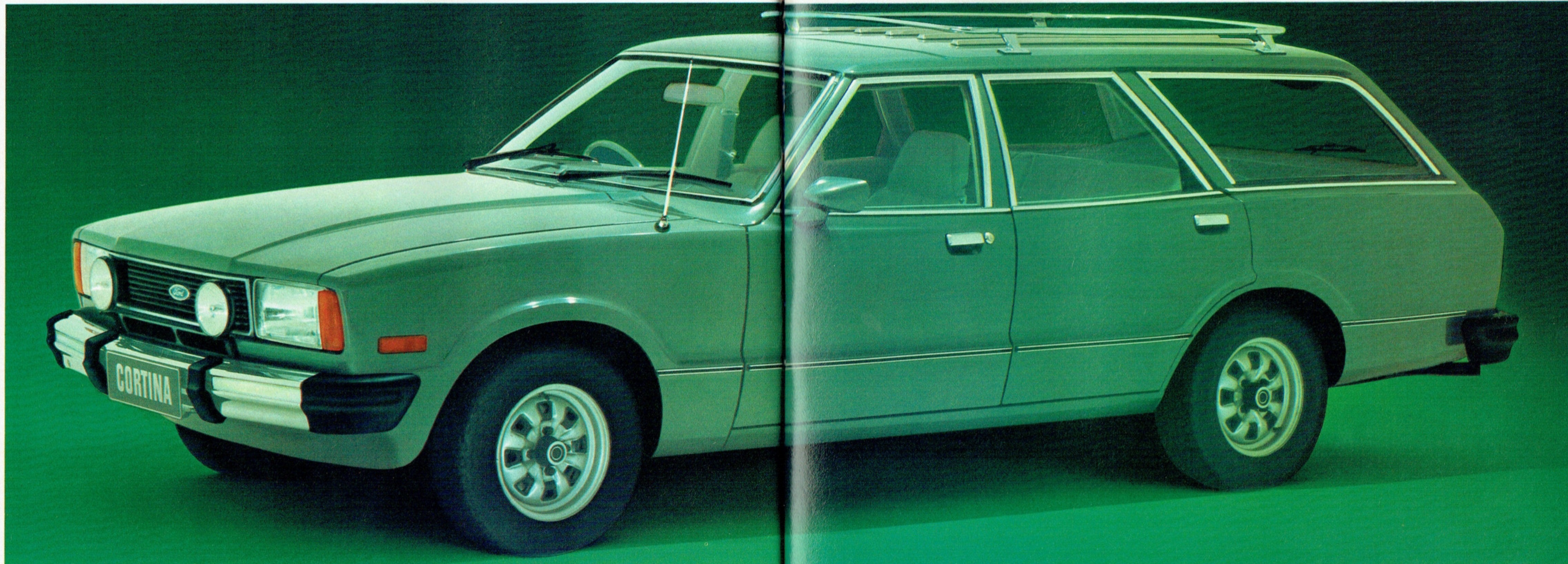
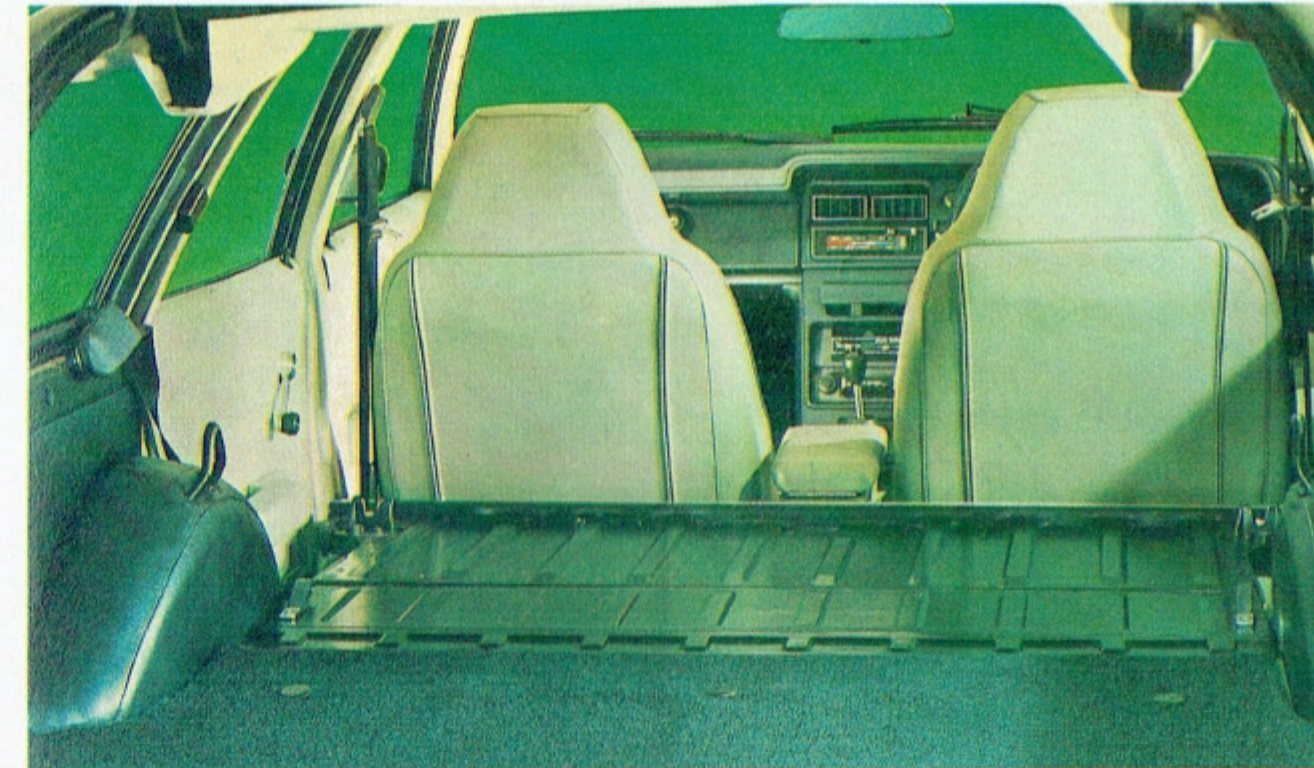
- Deep-section bumper bars with protective rubber end caps
- Interior courtesy light operated by front doors
- 3-speed heater/demister
- Lockable glove box
- Cigarette lighter (illuminated)
- Prismatic day/night interior rear-view mirror
- Black, non-glare windscreen wipers
- Front fender side-marker lights
- Steering column control stalks for
 - (i) Turn/lane change signals, high/low beam, headlight flasher and horn button
 - (ii) Windscreen wash/wipe

FORD CORTINA GL WAGON

STANDARD EQUIPMENT HIGHLIGHTS:

As for Cortina L Wagon but with these different and/or upgraded features:

- Styled steel road wheels
 - Carpet in load area
- And with these additional features which are not standard equipment on Cortina L Wagon:
- Bodyside protection mouldings
 - Rear window wash/wipe
 - Front centre console
 - AM push-button radio
 - Electric clock
 - Outboard passenger grab handles front and rear
 - Interior courtesy light operated by front and rear doors
 - Electric rear window demister



Illustrated above: Ford Cortina GL Wagon with optional GL Luxury Pack (available at extra cost).

FORD CORTINA GHIA

As good as it looks

The Cortina Ghia is the top of the line Cortina. Marked by distinctive exterior styling touches, such as vinyl roof and European style alloy road wheels, it also features a luxurious interior. Tastefully upholstered with rich fabrics, the Ghia gives you deeply-

cushioned, body-contoured seating, thick, cut pile carpet and extensive sound-insulation. The ride is smooth—and with the added grip of steel belt radial ply tyres. Order it as a 'four' or a 'six' with your choice of console-mounted 4-speed manual floor shift as standard, or optional 3-speed T-bar automatic (available at extra cost).

And Ford are now proud to introduce the new Cortina Ghia wagon. Designed and finished with the luxury, elegance and

prestige that means Ghia, yet with the spaciousness and versatility for family motoring. FORD CORTINA GHIA STANDARD EQUIPMENT HIGHLIGHTS:

As for Cortina GL but with these different and/or upgraded features:

- 4-spoke 'soft-feel' steering wheel
- Cut pile carpet on passenger compartment floor
- Carpeted kick pads on doors
- Carpeted load compartment floor

- Cloth seat facings
 - Intermittent windscreen wipers
 - Styled right hand remote control exterior rear-view mirror
 - Rear outboard inertia reel seat belts (Sedan only)
 - European style alloy road wheels
 - Deep-section bodyside protection mouldings
- And with these additional

features which are not standard on Cortina GL:

- Vinyl roof (Sedan only)
- Tinted-band, laminated windscreen
- Tinted side and rear glass
- Tachometer, oil gauge and trip meter
- Styled left hand exterior rear-view mirror
- Map pockets in rear of front seats

- Bumper rub-strips and overriders
- Carpeted floor in luggage compartment
- Vanity mirror in passenger side sun visor

CORTINA GHIA WAGON ALSO INCLUDES:

- Chrome finish roof rack



Illustrated left and right: Ford Cortina Ghia Wagon with optional stereo cassette player (available at extra cost).





Illustrated above: Ford Cortina L Wagon with optional GS Rally Pack (available at extra cost).



Illustrated above: Ford Cortina GL Sedan with optional GS Rally Pack (available at extra cost).

FORD CORTINA OPTIONS GS RALLY PACK

Available at extra cost on L and GL models

The GS Rally Pack is designed to allow you to drive your own Grand Sport touring car...to make your Cortina into a sporty-looking, sports handling machine.

All you do is pick your model...Cortina L or GL... 'six' or 'four'... sedan or wagon. Then add the GS Rally Pack and exciting things happen.

Along the side, bold bodyside tape stripes. Black paint treatment at the front and rear, and around the windscreen and rear window. Black finish bumper bars with protective rubber overrides. "Volante" sports alloy road wheels.

Up front there are twin, long-range halogen driving lights, also black finish to merge in with the grille.

Inside there's the European 4-spoke 'soft-feel' steering wheel (shown below) and comprehensive instrumentation, including tachometer, trip meter and oil gauge.

At your fingertips, there's the control stalk for intermittent windscreen wipers and washer. And, in sedans, a heavy duty sports handling suspension with increased diameter anti-roll bars and

performance-tuned shock absorber valving.

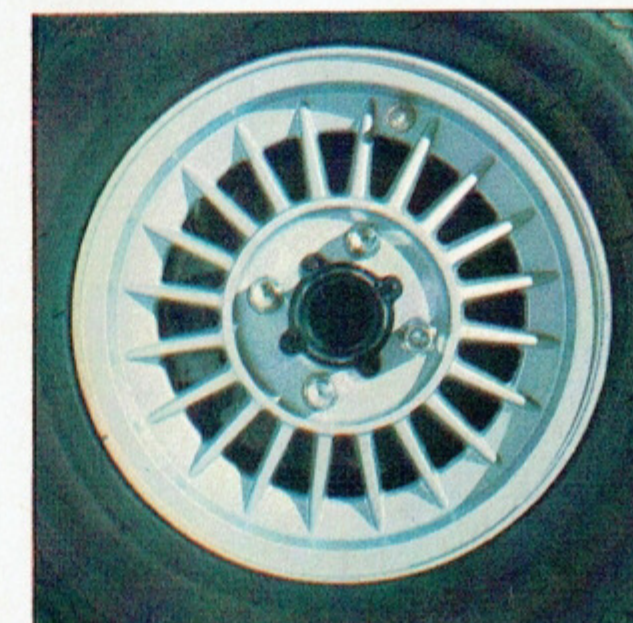
OTHER CORTINA OPTIONS INCLUDE: **Integrated air conditioning** lets you travel in climate-controlled comfort throughout the year. Dehumidifies the air, too. Available on all Cortina models.

GL Comfort/Convenience Pack available with the GL Sedan. Consists of styled right hand remote control exterior rear-view mirror, left hand exterior rear-view mirror, rear outboard inertia reel seat belts and cloth seat upholstery.

GL Luxury Pack available with GL Sedan and Wagon. For the sedan it consists of all GL 'Comfort/Convenience Pack' items above, plus: Stereo cassette tape player, long-range driving lights, front and rear bumper overrides. For the GL wagon, it consists of styled right hand remote control exterior rear-view mirror, left hand exterior rear-view mirror, stereo cassette tape player, long-range driving lights, front and rear bumper overrides and chrome roof rack.

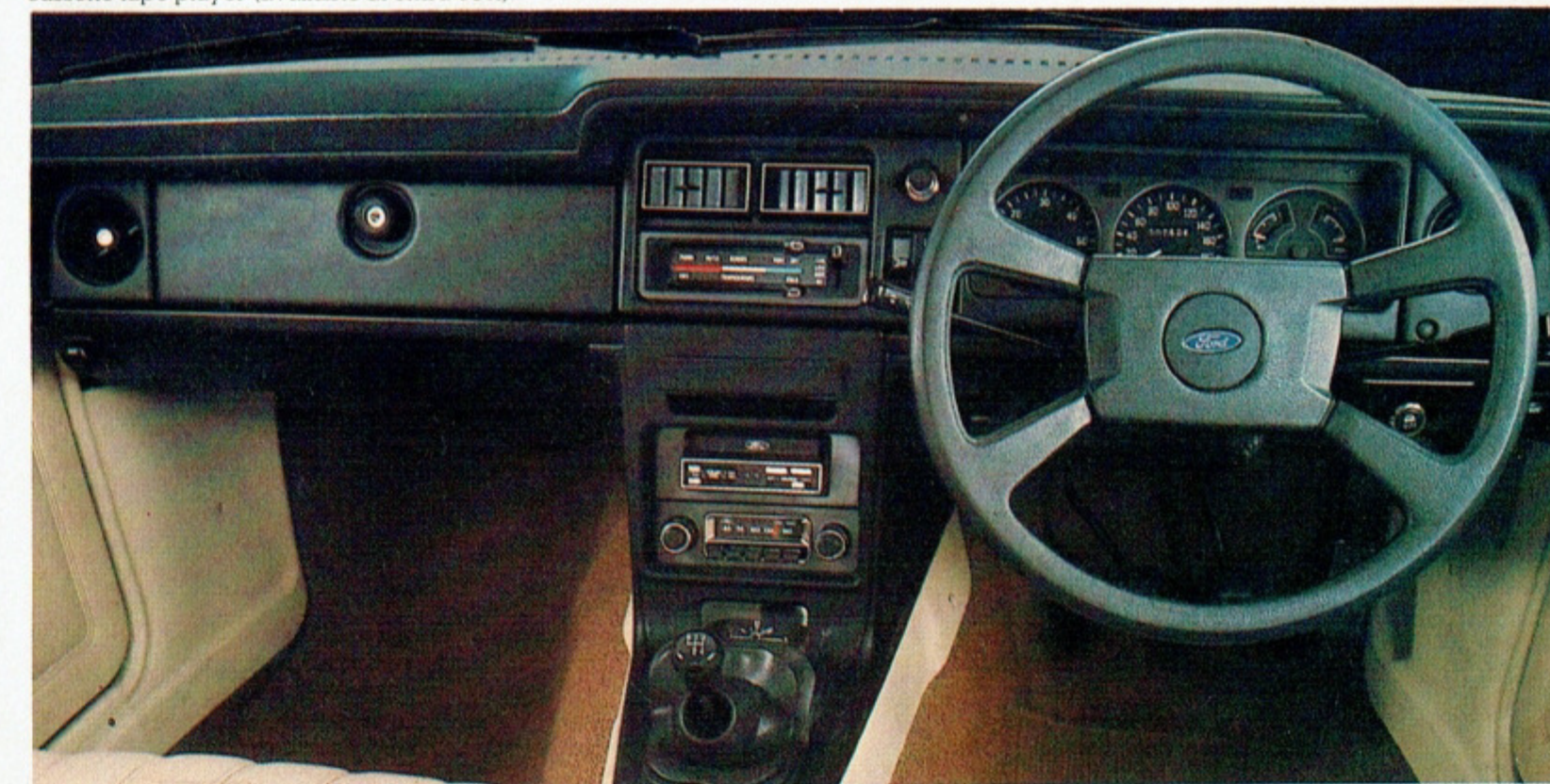
GS instrumentation and steering wheel provides comprehensive instrumentation including tachometer, trip meter and oil pressure gauge plus the 4-spoke 'soft-feel' steering wheel.

Power steering reduces steering effort, for ease-of-parking. Variable ratio steering geometry give good response and requires only 3.2 turns lock-to-lock. (Available with 6-cylinder models only.)



Illustrated left: "Volante" sports alloy road wheels.

Illustrated below: Ford Cortina GL '4' interior with optional GS Rally Pack and stereo cassette tape player (available at extra cost).



Ford Cortina L, GL and Ghia Options and Specifications

(Options are at extra cost)

CONVENIENCE EQUIPMENT	Cortina L Sedan	Cortina L Wagon	Cortina GL Sedan	Cortina GL Wagon	Cortina Ghia	Cortina Ghia Wagon
Integrated air-conditioning (a)	OPT	OPT	OPT	OPT	OPT	OPT
AM push-button radio	OPT	OPT	STD	STD	STD	STD
Stereo cassette tape player	NA	NA	OPT	OPT	OPT	OPT
Sunroof	OPT	NA	OPT	NA	OPT	NA
GL Comfort/Convenience Pack (b)	NA	NA	OPT	NA	NA	NA
GL Luxury Pack (c)	NA	NA	OPT	OPT	NA	NA
Ghia Prestige Pack (d)	NA	NA	NA	NA	OPT	OPT
Leather seat facings (e)	NA	NA	NA	NA	OPT	NA
Styled left hand exterior rear-view mirror	OPT	OPT	OPT	OPT	STD	STD
Body side protection mouldings (f)	OPT	OPT	STD	STD	NA*	NA
Bumper rub strips and overriders (g)	OPT	OPT	OPT	OPT	STD	STD
Class I Towing Pack (h)	OPT	OPT	OPT	OPT	OPT	OPT
SPORTS EQUIPMENT						
GS Rally Pack (i)	OPT	OPT	OPT	OPT	NA	NA
GS Instrumentation and steering wheel (j)	OPT	OPT	OPT	OPT	STD	STD
Tinted-band, laminated windscreen	OPT	OPT	OPT	OPT	STD	STD
Long-range driving lights (k)	OPT	OPT	OPT	OPT	OPT	OPT
POWER EQUIPMENT						
Power steering (l)	OPT	OPT	OPT	OPT	OPT	OPT
APPEARANCE EQUIPMENT						
Vinyl roof	OPT	NA	OPT	NA	STD	NA
Metallic paint (m)	OPT	OPT	OPT	OPT	NCO	NCO

ENGINE AND TRANSMISSION COMBINATIONS	Cortina L Sedan	Cortina L Wagon	Cortina GL Sedan	Cortina GL Wagon	Cortina Ghia	Cortina Ghia Wagon
FOUR-CYLINDER MODELS						
2 litre crossflow 4-cylinder with:						
4-speed manual floor shift	STD	STD	STD	STD	STD	STD
3-speed T-bar automatic	OPT	OPT	OPT	OPT	OPT	OPT
SIX-CYLINDER MODELS						
3.3 litre crossflow 6-cylinder with:						
3-speed manual floor shift	STD	STD	STD	STD	NA	NA
3-speed T-bar automatic	OPT	OPT	OPT	OPT	NA	NA
4.1 litre crossflow 6-cylinder with:						
4-speed manual floor shift	OPT	OPT	OPT	OPT	STD	STD
3-speed T-bar automatic	OPT	OPT	OPT	OPT	OPT	OPT

TYRE AVAILABILITY	Cortina L Sedan	Cortina L Wagon	Cortina GL Sedan	Cortina GL Wagon	Cortina Ghia	Cortina Ghia Wagon
AR 78S 13 steel belt radial ply tyres (n)	STD	NA	STD	NA	NA	NA
BR 78S 13 steel belt radial ply tyres	-	STD	-	STD	STD	STD
BR 70H 13 steel belt radial ply tyres	OPT	OPT	OPT	OPT	OPT	OPT

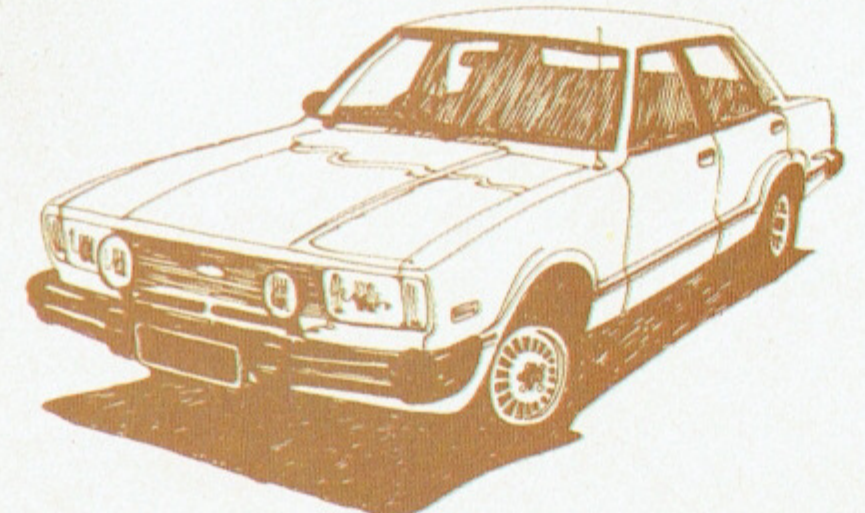
DIMENSIONS	Sedans		Wagons	
	mm	(in)	mm	(in)
Overall length - without overriders	4376	(172.3")	4493	(176.9")
- with overriders	4433	(174.5")	4544	(178.9")
Overall width	1699	(66.9")	1699	(66.9")
Overall height	1333	(52.5")	1342	(52.8")
Wheelbase	2578	(101.5")	2578	(101.5")
Track - front and rear	1426	(56.1")	1426	(56.1")
Fuel tank capacity	55 litres	(12.1 gals)	55 litres	(12.1 gals)
Turning circle - curb to curb	10.4 m	(34 ft.)	10.4 m	(34 ft.)
Luggage capacity - maximum	0.33 m ³	(11.8 cu. ft.)	-	-
Wagon load capacity - to rear seat	-	-	0.96 m ³	(34 cu. ft.)
- to front seat (with rear seat folded down)	-	-	1.81 m ³	(64 cu. ft.)
Wagon load length - to front seat (with rear seat folded down)	-	-	1880 mm	(74.0")

ENGINE SPECIFICATIONS	2 litre 4-cyl.	3.3 litre 6-cyl.	4.1 litre 6-cyl.
Engine displacement (cc)	1998	3280	4100
Bore (mm)	90.8	93.5	93.5
Stroke (mm)	76.9	79.5	99.3
Compression ratio (to 1)	9.2	8.8	9.0

Always discuss your intended purchase carefully with your Ford Dealer before placing your order.
Please note: All measurements, dimensions and capacities referred to above are approximate only.

Footnotes to chart on left:

- (a) Air conditioning includes tinted side and rear glass as standard. Tinted rear liftgate window is not available on Cortina L Wagon. Air conditioning is standard with Ghia Prestige Pack. Tinted side and rear glass is not included as part of a Dealer-fitted air conditioning package.
 - (b) GL Comfort/Convenience Pack is available on GL Sedan only. Consists of styled right hand remote control exterior rear-view mirror, styled left hand exterior rear-view mirror, rear seat inertia reel seat belts and cloth trim seat-facings.
 - (c) GL Luxury Pack is available on GL Sedan and Wagon only. For the sedan it consists of all GL Comfort/Convenience Pack items above, plus: stereo cassette tape player, long-range driving lights, front and rear bumper overriders and vinyl roof. For the GL Wagon it consists of styled right hand remote control exterior rear-view mirror, styled left hand exterior rear-view mirror, stereo cassette tape player, long-range driving lights, front and rear bumper overriders and chrome roof rack.
 - (d) The Ghia Prestige Pack consists of stereo cassette tape player, integrated air conditioning and power steering and leather seat facings on Ghia sedan only. Available only with 6-cylinder engines.
 - (e) Leather seat facings are standard with Ghia Prestige Pack (sedan only).
 - (f) Body side protection mouldings are not available with GS Rally Pack. (Deep section mouldings are standard on Cortina Ghia.)
 - (g) Bumper rub strips and overriders are not available with GS Rally Pack, GL Luxury Pack or long-range driving light options.
 - (h) Class I Towing Pack comprises tow bar, gooseneck, wiring harness with 7 pin electrical connector, uprated flasher unit, and on sedans only, heavy duty sports handling suspension. Towing capacity of up to 907 kg (2000 lbs). See also notes (o), (r) and (s) on page 41.
 - (i) GS Rally Pack comprises comprehensive instrumentation, 4-spoke 'soft feel' steering wheel, intermittent windscreen wipers, bodyside tape stripes, black finish driving lights, bumper overriders, black paint treatment, "Volante" sports alloy road wheels and sports handling suspension (sedans only). Bodyside mouldings deleted on Cortina GL.
 - (j) This option comprises comprehensive instrumentation including tachometer, trip meter and oil pressure gauge plus the 4-spoke 'soft-feel' steering wheel.
 - (k) Long-range driving lights are standard with GL Luxury Pack. Front and rear bumper overriders are standard with this option.
 - (l) Power steering available only with 6-cylinder engines.
 - (m) Consult the Ford Colour Selector or your Authorised Ford Dealer to determine which colours are available in metallic paint.
 - (n) AR 78S 13 tyres are standard on 4 cylinder Cortina L and GL sedan. BR 78S 13 tyres standard on 6 cylinder Cortina L and GL sedan, Cortina Ghia and Cortina Wagon.
- Codes to chart on left:
STD means standard equipment.
OPT means optional at extra cost.
NA means not available on that model.
NCO means no cost option.



Ford Falcon. A world class family car.

Ford Falcon is an exciting Australian family car. Aerodynamically sleek outside, efficiently designed inside with ample passenger room for up to five adults. Inside and out you'll find Falcon is designed for today's motorist. Whether you're driving across town or across Australia, Ford Falcon is designed to take you there in style and comfort.

Designed for today's driving conditions.

Looking at the Ford Falcon range, the clean cut styling and practical design influence of Europe are immediately apparent. But there's much more to Falcon than first meets the eye. Just about everywhere you look you'll find evidence of design priorities which reflect the needs and wants of today's drivers.

A trim, light vehicle means ease of handling and practical manoeuvrability. The firm, yet smooth handling and ride have been built on Falcon's tradition as a great Australian road car. The spacious interior offers a high level of comfort and quietness. The large glass area provides excellent vision for driver and passengers. And in line with world trends, the Falcon is designed to make more efficient use of fuel yet at the same time to deliver effective performance through its entire range of engines.

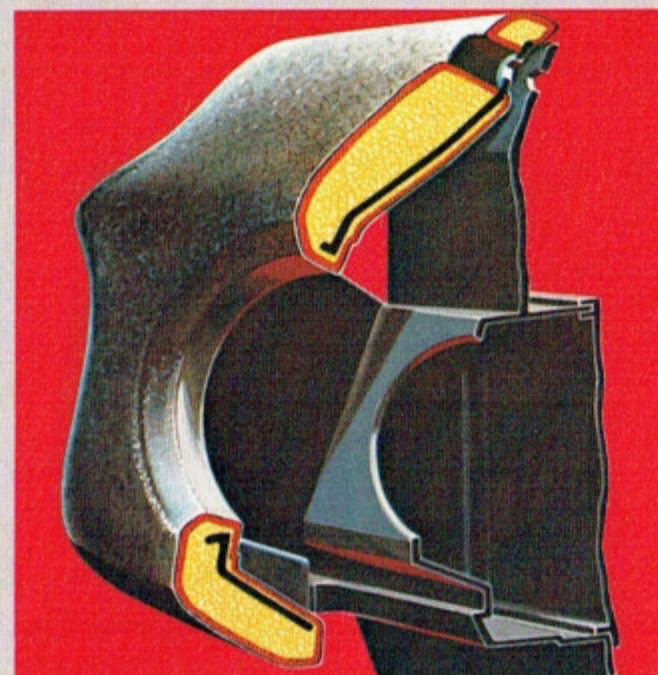
Cost of ownership is becoming increasingly important today and Falcon is specifically designed to help contain such costs through easier maintenance, while more advanced manufacturing processes, anti-corrosion treatments, improved paintwork and extensive quality control all contribute to a more reliable and durable car.



Illustrated above: Ford Falcon GL sedan



Advanced automotive technology.



1. The one-piece, full-foam crash pad and the instrument binnacle are moulded entirely from a special polyurethane foam which is soft inside yet forms its own solid, hard-wearing, easy-care surface.



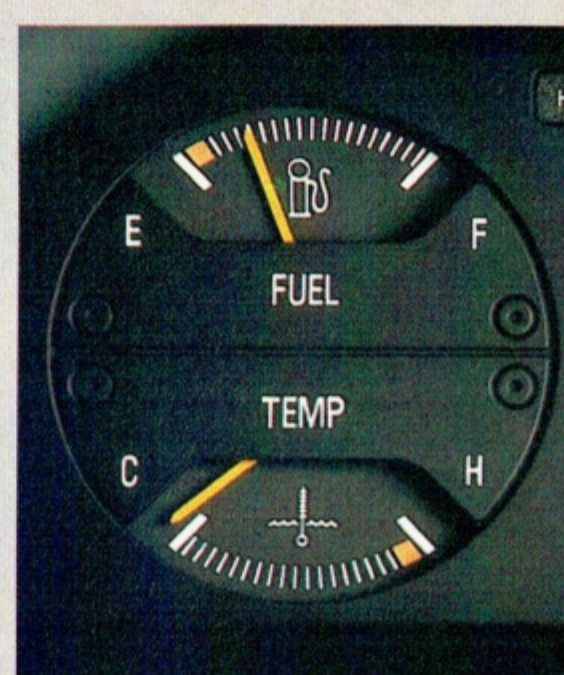
2. Lightweight, tough 'energy-absorbing' bumpers designed to help prevent minor parking and impact damage. While the valance panel under the front bumper is made of soft, deformable plastic to help reduce damage from high kerbs.

Aerodynamically designed, remote control rear-view mirror for reduced wind noise.



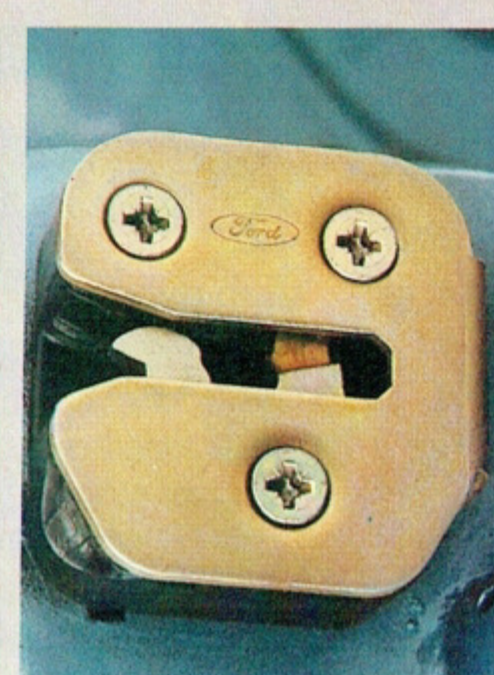
3. The conventional cable operated speedometer mechanism has been replaced with an electronic pulse system designed to provide improved standards in accuracy and reliability.

'Soft-feel' 4-spoke steering wheel.



4. An electronic fuel sender system (similar to those used in Boeing 727 jet aircraft) is designed not only to give more accurate readings of fuel levels, but to provide a more robust system than the mechanically operated device previously used.

Front and rear crumple zones provide additional protection on either side of the strong safety cage.



5. 'Taga' door locks. Smoothly operated and secure without the use of heavy springs. Rear Taga locks incorporate a 'child-proof' setting, which prevents the rear doors from being opened from inside the car.



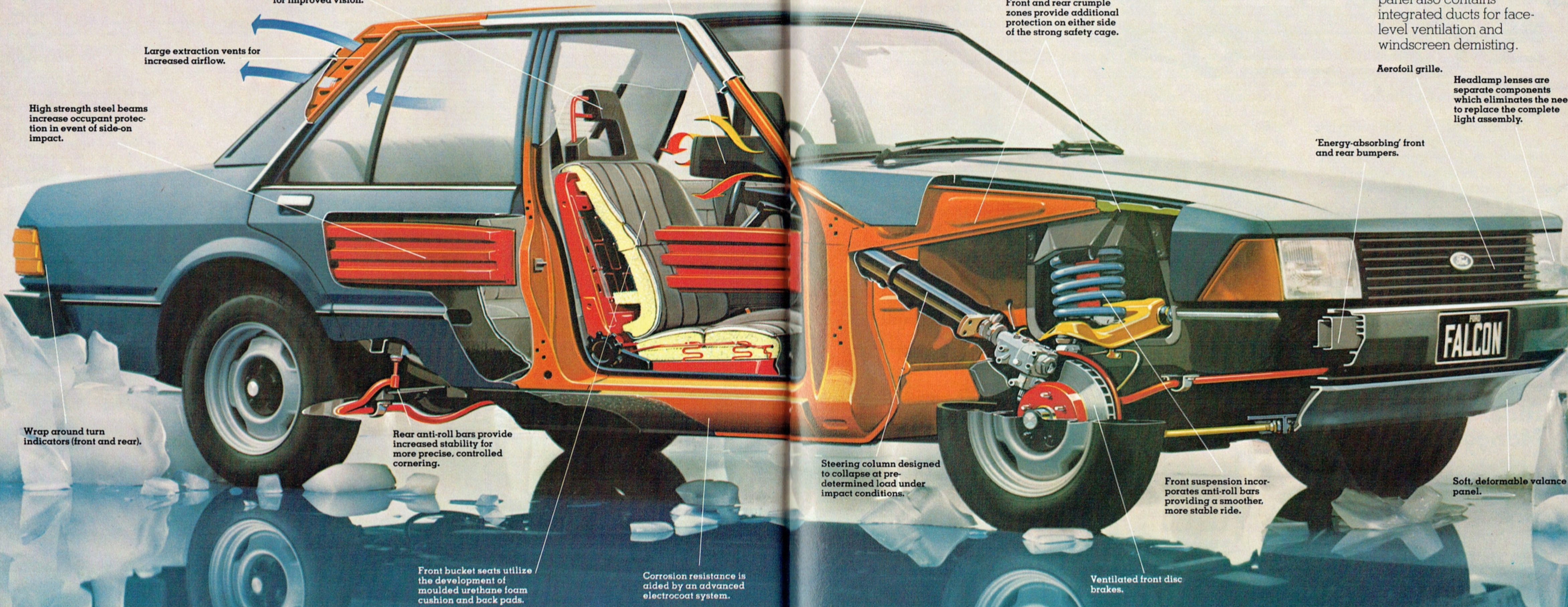
6. All instrument wiring is retained and protected by channels moulded into the instrument panel. This is designed to improve reliability by greatly reducing the potential for wiring loom pinching and abrasion and the development of squeaks and rattles. The panel also contains integrated ducts for face-level ventilation and windscreen demisting.

Aerofoil grille.

Headlamp lenses are separate components which eliminates the need to replace the complete light assembly.

'Energy-absorbing' front and rear bumpers.

Soft, deformable valance panel.



Large extraction vents for increased airflow.

High strength steel beams increase occupant protection in event of side-on impact.

Wrap around turn indicators (front and rear).

Rear anti-roll bars provide increased stability for more precise, controlled cornering.

Front bucket seats utilize the development of moulded urethane foam cushion and back pads.

Corrosion resistance is aided by an advanced electrocoat system.

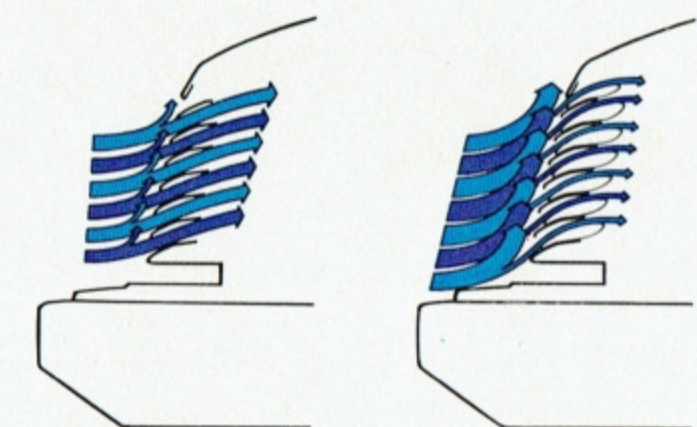
Steering column designed to collapse at pre-determined load under impact conditions.

Front suspension incorporates anti-roll bars providing a smoother, more stable ride.

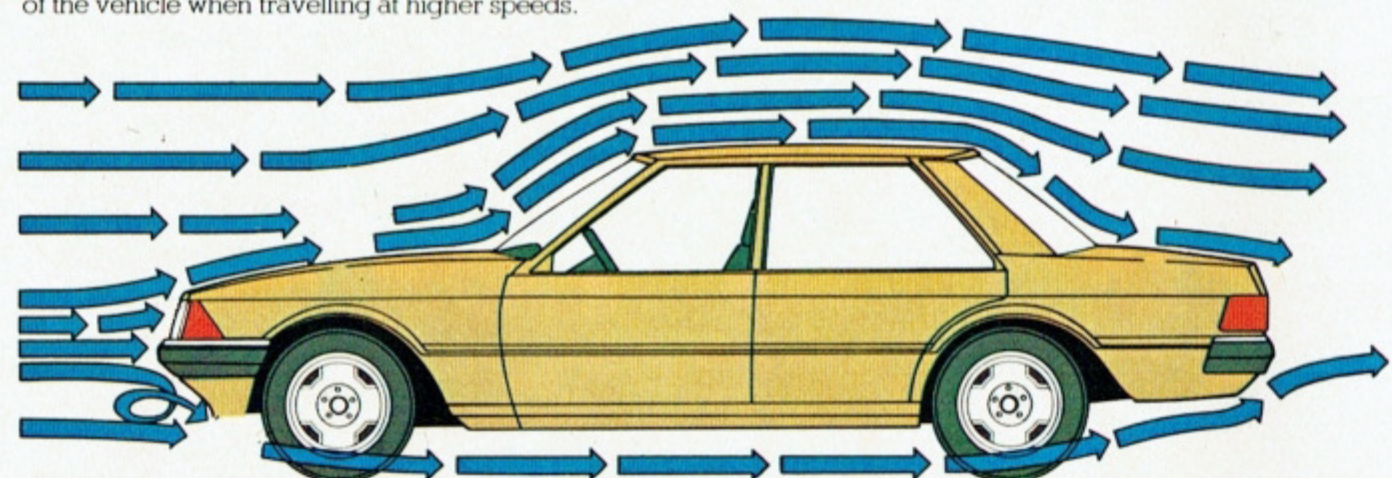
Ventilated front disc brakes.

Fuel Economy. Plus Performance.

The combination of engine design, low vehicle weight and aerodynamic styling play a vital role in achieving efficient fuel usage and performance in the XD Falcon range.



Louvred front grille allows air to pass through the radiator at low speed but diverts excess air over the nose of the vehicle when travelling at higher speeds.



Aerodynamic body design contributes to fuel efficiency and a smooth stable ride.

3.3 and 4.1 litre 6-cylinder engines:

Dynamometer trials and computer analysis during the design stage have led to an induction system and revised cylinder head resulting in an efficient use of both power and fuel in the 3.3 litre and 4.1 litre 6-cylinder engines.

4.9 and 5.8 litre V8 engines:

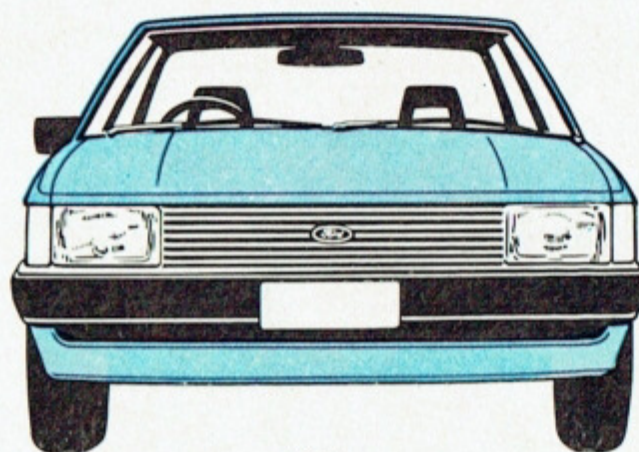
Electronic ignition in both the 4.9 litre and 5.8 litre V8 engine is designed to provide more consistent and efficient fuel combustion. The viscous-clutch engine cooling fan is designed to rotate at less than full engine speed under all but very hot conditions thereby helping to improve fuel economy and reduce engine noise and vibration.

Ride, Handling and Manoeuvrability.

Falcon's wide track, long wheelbase and finely tuned suspension are designed with one aim in mind... to provide a well balanced combination of comfort and control.

The wide track provides stability where it's needed most and the steering geometry allows for quick directional response.

The long wheelbase, spring ratings and short front and rear



Wide Track
1552 mm (61.1")

body overhang all help to maintain Falcon's traditionally high level of ride and comfort.

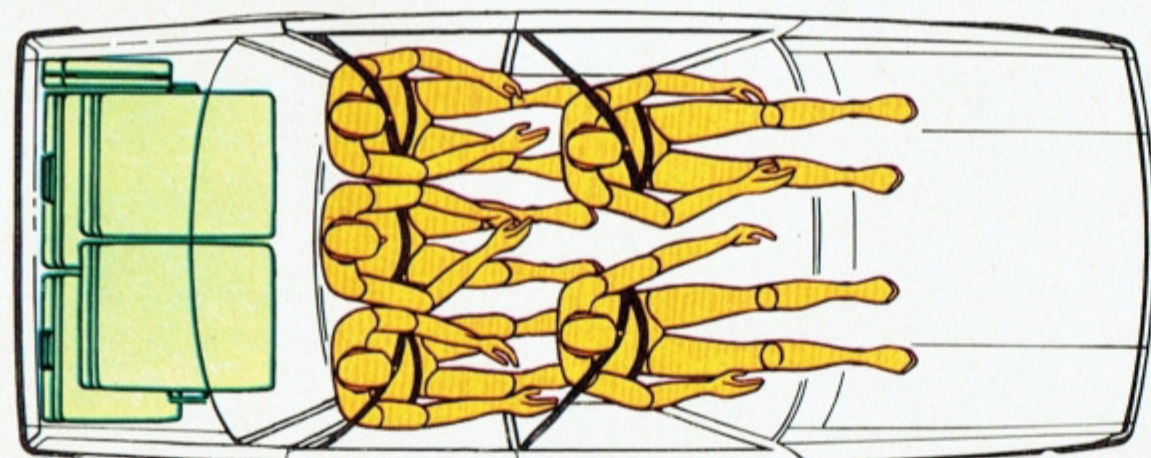
The spring and damper settings of the suspension geometry together with an effective use of anti-roll bars, provide stability and reduce body roll for precise, controlled cornering.

Naturally, the suspension is finely tuned to the high quality steel belt radial tyres which are standard on all models.

Seating, one of the traditional strengths of the Falcon range, is matched to the suspension to provide a more comfortable ride on various types of road surfaces.

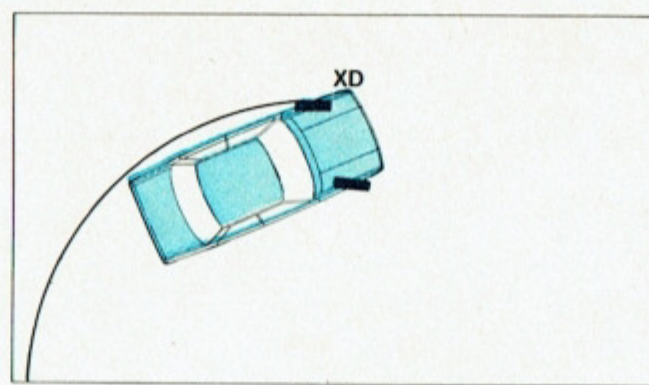
Front bucket 'wrap-around' type seats are designed to hold you firmly while cornering.

The overall result of Falcon engineering is a car which is responsive, easy to manoeuvre around town, handles predictably when cornering, cruises comfortably and provides a smooth ride and excellent stability on various types of road surfaces.



Interior dimensions Inside Falcon there is ample room to accommodate 5 adults comfortably.

Front leg room	1047 mm (41.2")	Front headroom	956 mm (37.6")
Rear leg room	982 mm (38.7")	Rear headroom	956 mm (37.6")
Front shoulder room	1519 mm (59.8")	Luggage capacity	.427 m ³ (15.1 ft ³)
Rear shoulder room	1520 mm (59.8")		



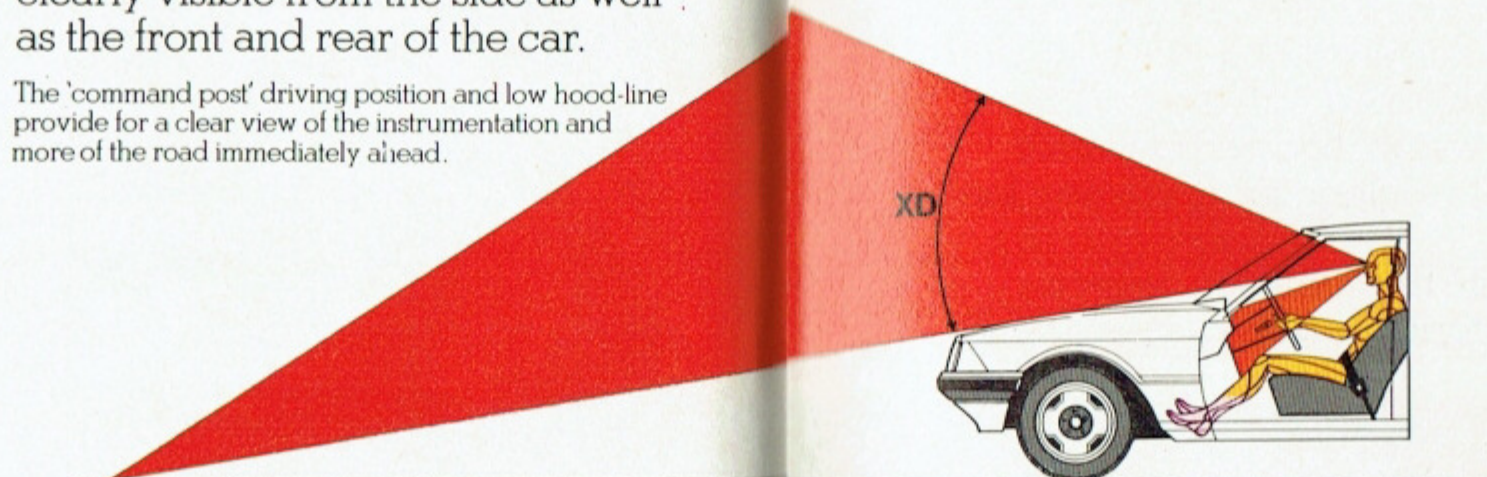
Tight 11.5 m (37.8 ft.) turning circle for improved manoeuvrability and ease of parking.

Protection for you and your passengers.

As well as the excellent handling characteristics and overall responsiveness of the Falcon, there are a number of other important features of the car which are designed to help keep you out of trouble.

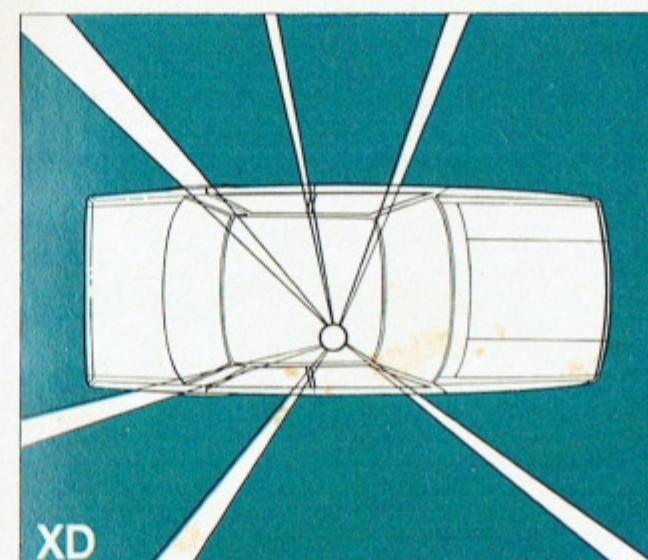
Driver visibility is aided by a large window area at front, sides and rear, quartz halogen headlights, a large area remote control exterior rear view mirror and an electric rear window demister*. Wrap around front and rear turn indicators are clearly visible from the side as well as the front and rear of the car.

The 'command post' driving position and low hood-line provide for a clear view of the instrumentation and more of the road immediately ahead.



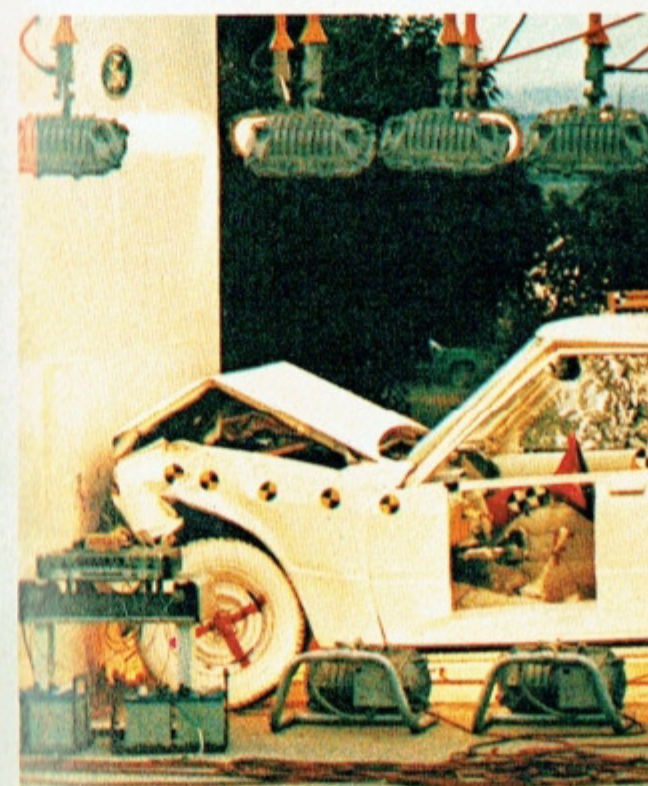
There are also a number of features designed to provide driver and passenger protection in the event of an accident. Side doors are fitted with deep section, high strength steel beams to help guard against intrusion into the passenger compartment in the event of a side-on impact. Front and rear crumple zones are designed to deform progressively on impact to help reduce

*Electric rear window demister is optional at extra cost on Falcon GL Wagon.



Driver visibility is aided by a large glass area.

damage to the passenger compartment. A one-piece full foam crash pad improves protection for front seat occupants. Rear door locks with 'child-proof' setting and hazard warning flashers are among some of the other items which are designed to help you and your passengers feel more secure in your Falcon.



Strategically designed and positioned crumple zones have been proven in an extensive pre-production crash-test program.

Reliability and Serviceability.

One good way to put some of the pleasure back into motoring is to take out some of the increasing costs. The Falcon range sets out to do just this by providing cars which are designed to be more reliable and easier and less expensive to service. Features designed to improve reliability include the one-piece instrument panel; the electronic fuel gauge sender system; the electronic speedometer and one-piece door seals for better protection against dust and water entry.

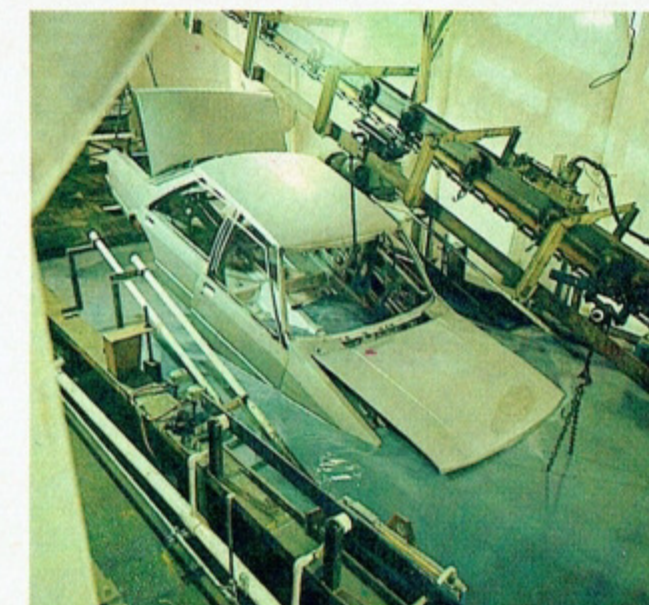
A number of components have been designed for easier, less frequent servicing in order to reduce maintenance costs. For example, more instruments and controls are serviceable from the front of the instrument panel and the battery has been designed to consume less distilled water and is therefore less prone to contamination. 'Energy absorbing' bumpers, deformable plastic front valance panel and headlamp lenses that can be replaced separately help to reduce the cost of minor impacts.



Corrosion Protection.

To help protect your new car an advanced form of electrocoat system provides increased corrosion resistance and improved paint adhesion. Aluminised wax and zinc rich primer are applied to vulnerable areas of the body while acid resistant paints give improved durability and help maintain that 'new car' look longer. Plastic splash shields inside the front wheel houses help reduce build-up of corrosion-inducing deposits.

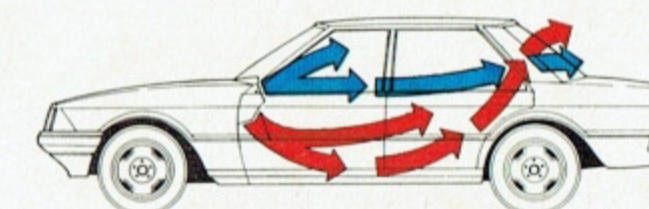
Extensive use of noise-reducing insulation materials provides a quieter and more relaxing driving environment.



Body totally immersed to coat the entire body structure and outer sheet metal.

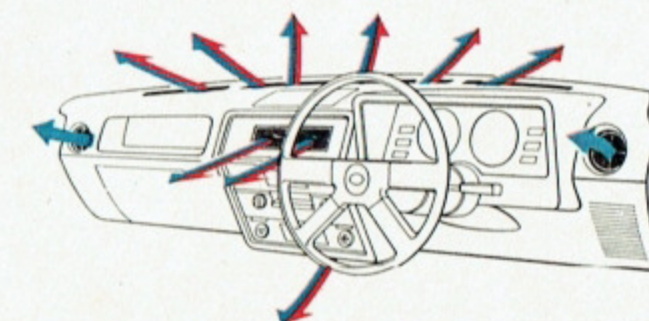
Comfort for Australian Conditions.

Inside the spacious interior of Falcon the comfort of the occupants is well catered for. An efficient 3-speed fan-boosted ventilation system and large air extraction vents in the rear pillars provide for excellent air flow. The 'hi/lo' control setting means you can have cool air on your face and warm air on your feet to help keep you warm but alert

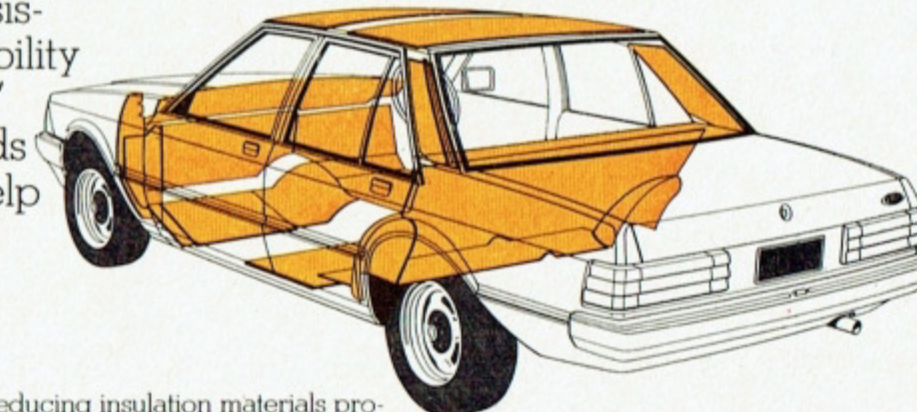


on long trips. There is an eyeball vent on each side of the instrument panel plus centre vents and floor vents for driver and front seat passenger.

For more effective windscreen demisting, there are vents across the width of the crash pad.



When air conditioning (optional at extra cost) is fitted with floor-mounted transmission selectors, ducting to the rear compartment is standard for the increased comfort of the rear seat passengers.





Falcon GL. A world class family car without a world class price.

GL

When you consider the striking design, comprehensive feature list, handling, performance, ride, comfort and spaciousness of Falcon GL and then consider that it costs around the same as some smaller cars, it represents outstanding value for money. In the tradition of the great Australian road car, Falcon GL has been designed with the driver and the open road in mind. At the same time its compact shape, excellent visibility and tight turning circle make it as enjoyable to drive around town.

The standard 3.3 litre six cylinder engine delivers 82 kw. (110 bhp) yet when combined with the low overall vehicle weight and aerodynamic design it results in more efficient fuel usage.

Despite the compact, easy-to-park exterior of Falcon, inside you'll

find plenty of comfortable space for 5 adults with reclining front bucket seats which do not detract from the ample legroom for rear seat passengers. There is also plenty of room in the boot for luggage.

The 'soft-feel' 4-spoke steering wheel is designed and positioned for a clear view of the easy-to-read instrumentation. The two steering column control stalks provide fingertip control of windscreen wipers and washers and high/low beam, turn/lane change indicators and horn. Controls are within easy reach of the driver and all switches are designed so that their method of operation is indicated by their shape. Falcon drivers can feel at a touch whether to pull, turn or slide the control.

A dash-integrated control panel contains heating, ventilation, radio, hazard flasher, cigarette lighter and choke controls.

Check out the following Falcon GL features:

Remember that they're all standard. Then consider the price and we're sure you'll agree that this is truly a world class family car.

FORD FALCON GL SEDAN STANDARD EQUIPMENT HIGHLIGHTS:

- 3.3 litre crossflow 6-cylinder engine

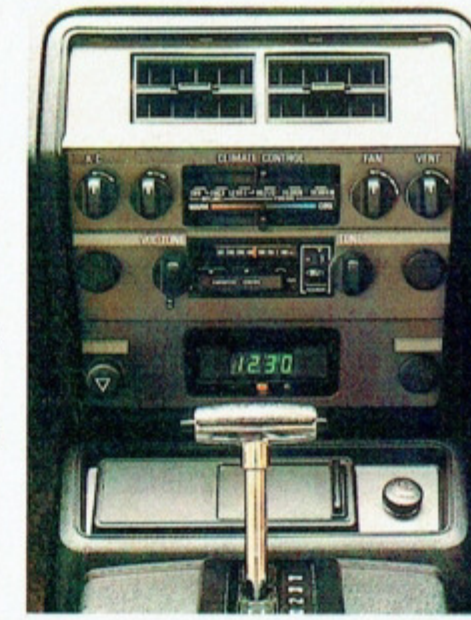
- 3-speed manual column shift transmission
- Power assisted front disc brakes
- CR78 S14 steel belt radial ply tyres
- Styled steel road wheels
- Rectangular quartz halogen headlights
- Gas strut for 'easy-lift' engine hood
- Bodyside protection mouldings
- 'Soft-feel' 4-spoke steering wheel
- Reclining front bucket seats
- Front folding centre armrest
- Carpeted passenger compartment floor
- Rubber mat on luggage compartment floor
- AM push-button radio with lock-down aerial
- Power assisted ventilation
- 3-speed heater/demister
- Interior courtesy light operated by front doors
- Electric rear window demister
- Steering column control stalks for
 - Turn/lane change signals, high/low beam, headlight flasher and horn
 - 2-speed windscreen wipers and windscreen washer
- Prismatic day/night interior rear-view mirror
- Right hand side remote control exterior rear-view mirror
- Dash-mounted hand brake with 'trigger' release
- Lockable front passenger side glove box and dash integrated parcel tray
- 'Lights on' warning lamp
- Hazard flashers
- Rear door locks with 'child-proof' setting



Ford Fairmont. Outstanding in any company.

Ford Fairmont is a highly appointed car designed to stand out on the road and at any gathering. Elegant, clean European influenced styling, extra performance from the standard 4.1 litre six cylinder engine, smooth ride and confident handling, coupled with a comprehensive feature level make this a most desirable car to own and drive. Fairmont owners enjoy the 'all-weather comfort' of cloth seat facings, the ease of T-bar automatic transmission and the convenient centre console. Further feature highlights include a digital clock including date and month display, left and right hand side remote control exterior rear-view mirrors, tinted-band, laminated windscreen, tinted side and rear glass, carpet on the passenger and luggage compartment floors and on the lower area of the doors. The discerning driver who looks for that 'something extra' need look no further than Fairmont.

4.9 litre V8 engine, AM push-button radio stereo cassette tape player, integrated air conditioning and power operated windows as shown are optional at extra cost.



FORD FAIRMONT SEDAN STANDARD EQUIPMENT HIGHLIGHTS:

As for Falcon GL sedan but with these different and/or upgraded features:

- 4.1 litre crossflow 6-cylinder engine
- 3-speed T-bar automatic transmission
- ER78S14 steel belt radial ply tyres
- 'Corduoy/crushed Beaumont' cloth seat facings
- Intermittent windscreen wipers
- Front centre console with armrest and storage bin
- Cut pile carpet on passenger compartment floor
- Rear outboard inertia reel seat belts
- Tinted-band, laminated windscreen
- Tinted side and rear glass

- Dual tone horn
 - Interior courtesy lights operated by all four doors
 - Deep-section bodyside protection mouldings
- and with these additional features which are not standard equipment on Falcon GL sedan:
- Chrome wheel trim rings
 - Bright wheel centre-piece
 - Left hand side remote control exterior rear-view mirror
 - Digital clock with date and month display
 - Vanity mirror in passenger side sun visor
 - Folding centre armrest in rear compartment
 - Outboard passenger grab handles
 - Carpeted luggage compartment floor and lower door area
 - Courtesy light in glove box and in luggage compartment



Ford Fairmont Ghia. The Name Says It All.

For over sixty years, the name Ghia has been synonymous with some of the world's most luxurious custom built motor cars.

In 1969, Ford Motor Company and Ghia began working together in a partnership which combined their unique experience in engineering and design.

Today, Ghia has become familiar as the name reserved by Ford for some of its most comprehensively equipped and elegant cars.

Against this background, we are proud to introduce you to Ford Fairmont Ghia.

A car with the elegance, luxury, performance and engineering excellence that the name immediately suggests.

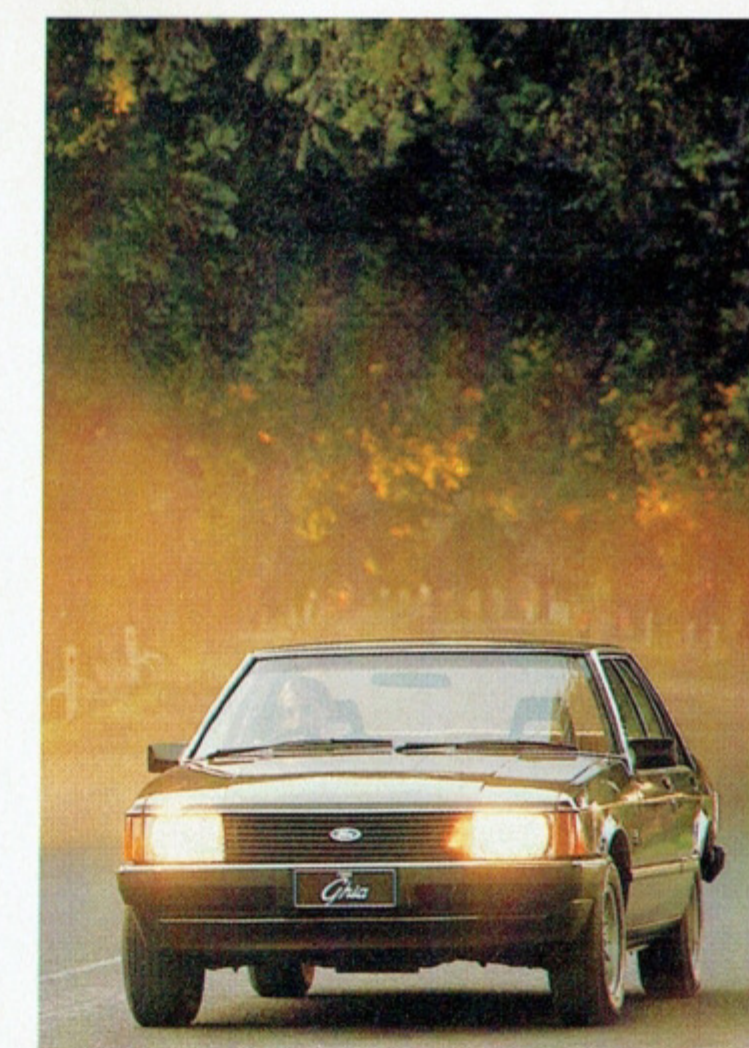




FORD FAIRMONT GHIA STANDARD EQUIPMENT HIGHLIGHTS:

As for Fairmont sedan but with these different and/or upgraded features:

- 4-wheel power disc brakes
- ER70H14 steel belt radial ply tyres
- Sports alloy road wheels
- Limited slip differential
- 'Crushed velour' cloth seat facings and door trim panels
- 'Soft-feel' twin spoke steering wheel
- AM push-button radio with power aerial



and with these additional features which are not standard equipment on Fairmont sedan:

- Comprehensive instrumentation
- Map pockets on rear of front seats
- Remote control boot release
- Bright finish wheel arch mouldings and exhaust trim
- Bodyside pinstripes
- Front foot well lamps

Always consult your Authorised Ford Dealer for the latest information on models, specifications, features, prices, options and availability before placing an order.

Ford Falcon GL and Fairmont Wagons. More of what you buy a wagon for.

The design of the Falcon and Fairmont wagons is immediately and strikingly different.

The sleek styled body makes for ease of manoeuvrability and parking, yet inside space efficiency has been utilized to such an extent that there's ample passenger room without sacrificing load space. The smooth riding long wheel base provides for both passenger and driver comfort. The wide front track provides positive stability and the turning circle is a practical 12.4 metres (40.6 ft.).

A one-piece liftgate makes loading and unloading easier by providing direct access to the wide, deep rear opening. And both the Falcon and the Fairmont wagon are fitted with an effective rear window wash/wipe system.

Inside you'll find the same standard of comfort, excellent visibility, clear instrumentation and similar list of features as in the sedans. On the road you'll notice efficient performance, predictable handling and a smooth, quiet ride.

FORD FALCON GL WAGON STANDARD EQUIPMENT HIGHLIGHTS:

- 3.3 litre crossflow 6-cylinder engine
- 3-speed manual column shift transmission
- Power assisted front disc brakes
- ER78S14 steel belt radial ply tyres
- Styled steel wheels
- Rectangular quartz halogen headlights
- Gas strut for 'easy-lift' engine hood
- Bodyside protection mouldings
- 'Soft-feel' 4-spoke steering wheel
- Reclining front bucket seats
- Front folding centre armrest
- Carpeted passenger compartment floor
- Rubber mat on load compartment floor
- AM push-button radio with lock-down aerial
- Power assisted ventilation
- 3-speed heater/demister
- Interior courtesy light operated by front doors
- One-piece liftgate with gas strut
- Rear window wash/wipe system
- Steering column control stalks for
 - Turn/lane change signals, high/low beam, headlights flasher and horn
 - 2-speed windscreen wipers and windscreen washer



Illustrated above: Ford Fairmont Wagon with optional air conditioning and multiplex radio/stereo cassette tape player (available at extra cost).

- Prismatic day/night interior rear-view mirror
- Right and left hand side remote control exterior rear-view mirrors
- Dash-mounted hand brake with 'trigger' release
- Lockable front passenger side glove box and dash integrated parcel tray
- 'Lights on' warning lamp
- Hazard flashers
- Rear passenger door locks with 'child-proof' setting

FORD FAIRMONT WAGON STANDARD EQUIPMENT HIGHLIGHTS:

As for Falcon GL Wagon but with these different and/or upgraded features:

- 4.1 litre crossflow 6-cylinder engine
- 3-speed T-bar automatic transmission
- 'Corduroy/crushed Beaumont' cloth seat facings
- Intermittent windscreen wipers
- Front centre console with armrest and storage bin
- Cut pile carpet on passenger compartment floor
- Rear outboard inertia reel seat belts
- Tinted-band, laminated windscreen
- Tinted side and rear glass
- Dual-tone horn
- Interior courtesy lights operated by all four passenger doors



Illustrated: Ford Falcon GL Wagon

and with these additional features which are not standard equipment on Falcon GL Wagon:

- Deep section bodyside protection mouldings
- Chrome wheel trim rings
- Bright wheel centre-piece and wheel nuts
- Chrome finish roof rack
- Digital clock with date and month display
- Electric rear window demister
- Vanity mirror in passenger side sun visor
- Carpeted load compartment floor
- Carpeted lower door area
- Courtesy light in glove-box





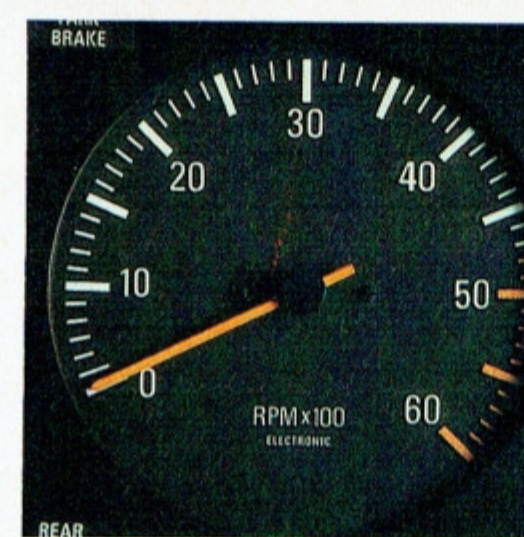
Left hand side remote control exterior rear-view mirror.



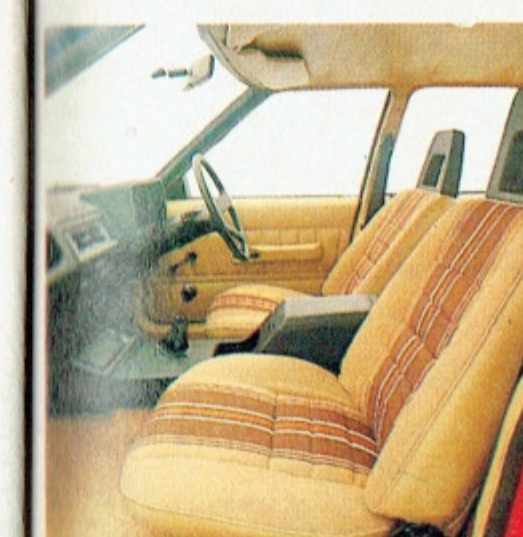
3-speed T-bar automatic transmission.



Integrated air conditioning with ducting to rear compartment (floor-mounted transmissions only).



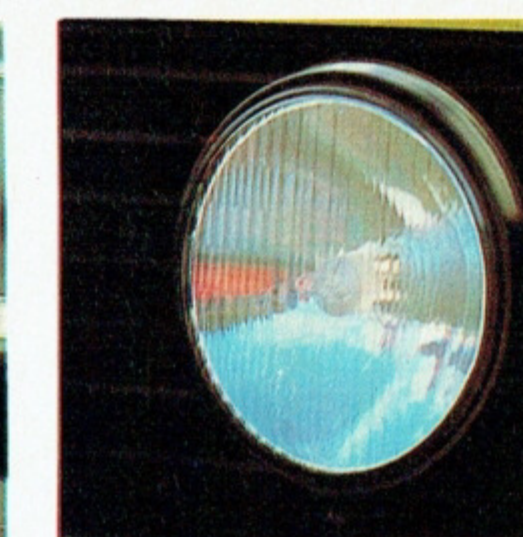
Comprehensive instrumentation including tachometer.



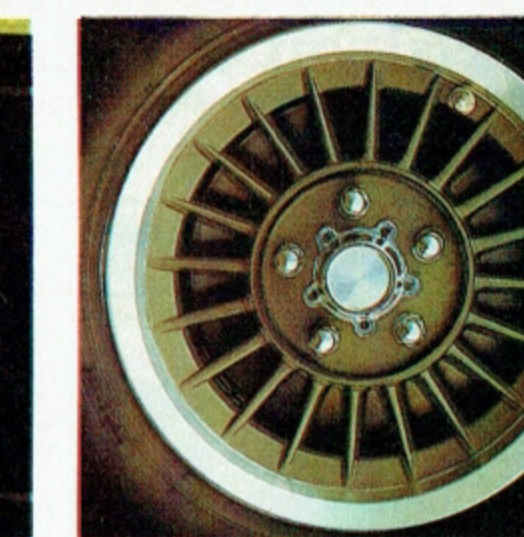
Striped wool blend seat facings.



AM push-button radio/stereo cassette tape player.



Long-range driving lights.



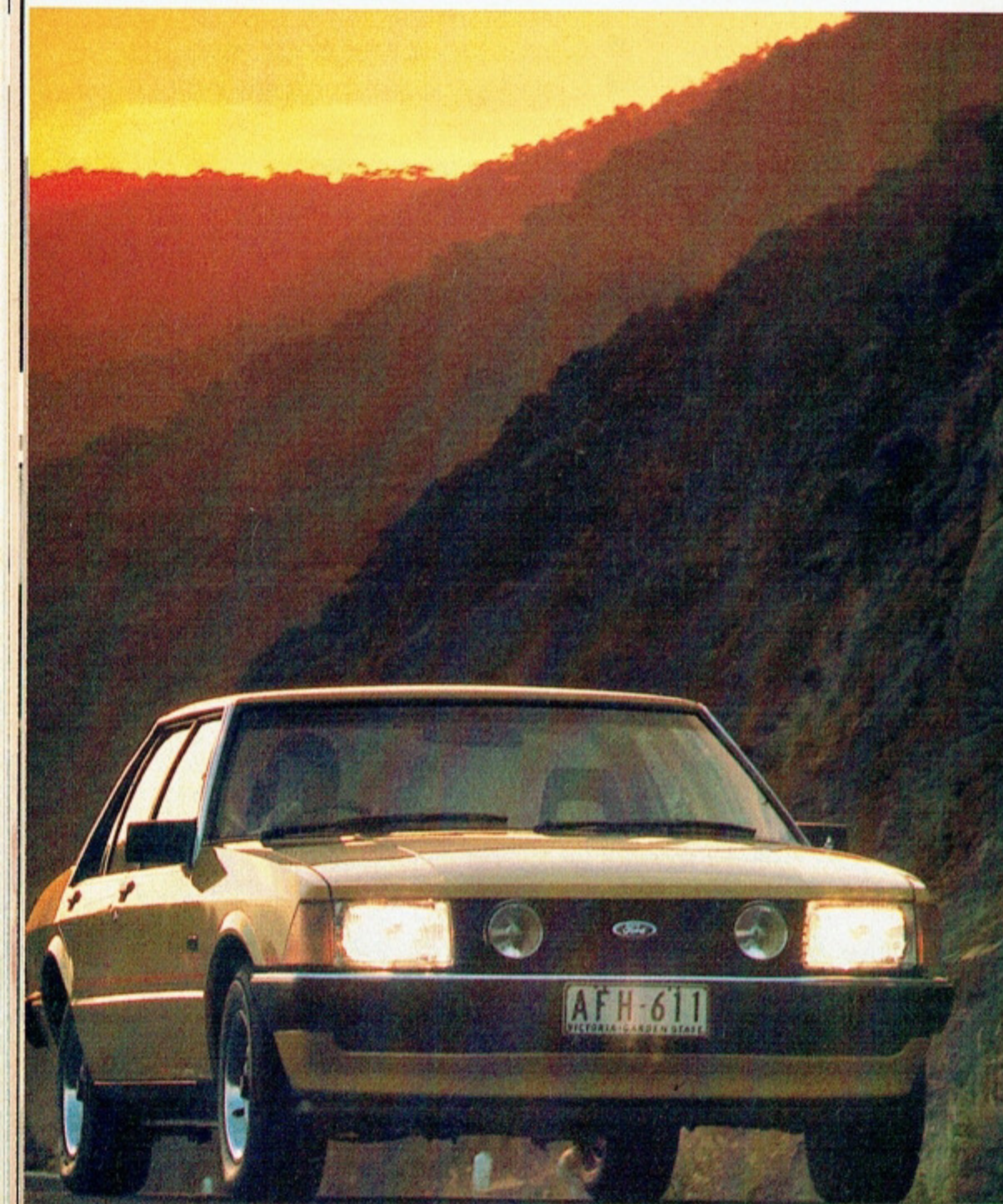
'Volante' sports road wheels.

Ford Falcon GL, Fairmont and Fairmont Ghia options (available at extra cost unless otherwise stated)

CONVENIENCE EQUIPMENT

	Falcon GL		Fairmont		Fairmont Ghia
	Sedan	Wagon	Sedan	Wagon	
Integrated air conditioning	(a) OPT	OPT	OPT	OPT	OPT
Tinted side and rear glass	(a) OPT	OPT	STD	STD	STD
AM push-button radio/stereo cassette tape player	(b) OPT	OPT	OPT	OPT	OPT
AM/FM push-button Multiplex radio/stereo cassette tape player	(c) OPT	OPT	OPT	OPT	OPT
Digital clock with date and month display	(d) OPT	OPT	STD	STD	STD
Electric rear window demister	STD	OPT	STD	STD	STD
Intermittent windscreen wipers	OPT	OPT	STD	STD	STD
Rear outboard inertia reel seat belts	OPT	OPT	STD	STD	STD
Left hand side remote control exterior rear-view mirror	OPT	STD	STD	STD	STD
Vinyl seat covering	STD	STD	NCO	NCO	NA
Cloth seat facings—'Corduroy/crushed Beaumont' cloth	NA	NA	STD	STD	NA
—Crushed velour	NA	NA	NA	NA	STD
—Striped wool blend	(u) OPT	OPT	OPT	OPT	OPT
Leather seat facings	NA	NA	NA	NA	OPT
Front bench seat (brown vinyl covering)	(d) NCO	NCO	NA	NA	NA
Rubber floor mats	(e) NCO	NCO	NA	NA	NA

Illustrated below: Ford Falcon GL Sedan with 'S Pack' (available at extra cost).



A wide range of options.

To suit the requirements of individual drivers and different driving conditions, there are a number of extra cost options and option packs available for the Falcon and Fairmont range. These include a special Outback Pack, designed for more rugged conditions, three towing packs and the 'S Pack', an exciting concept which combines several individual features to bring a more sporty appearance and luxurious feel to your Falcon GL or Fairmont, sedan or wagon.

'S Pack' includes the following different and or upgraded features:

- Distinctive paint treatment
- Slotted steel road wheels with chrome trim rings
- Comprehensive instrumentation including speedometer; tachometer; fuel, temperature and oil pressure gauges; volt meter; trip meter; 'low fuel' warning lamp and digital clock (digital clock standard equipment on Fairmont)
- Intermittent windscreen wipers (standard equipment on Fairmont)
- Striped wool blend cloth seat facings
- Left hand side remote control exterior rear-view mirror (standard equipment on wagons and Fairmont sedan)
- Front spoiler
- Long-range driving lights
- ER70H14 steel belt radial ply tyres
- Delete bodyside moulding on Falcon GL S Pack only

Some options are required to be ordered or used in combination with other options.

SPORTS-TYPE EQUIPMENT

	Falcon GL		Fairmont		Fairmont Ghia
	Sedan	Wagon	Sedan	Wagon	
'S Pack'	(f) OPT	OPT	OPT	OPT	NA
'Volante' sports alloy road wheels	(g) OPT	OPT	OPT	OPT	NA
Limited slip differential	(h) OPT	OPT	OPT	OPT	STD
Long-range driving lights	OPT	OPT	OPT	OPT	OPT
Tinted-band, laminated windscreen	OPT	OPT	STD	STD	STD
Comprehensive instrumentation	(i) OPT	OPT	OPT	OPT	STD

POWER EQUIPMENT

4-wheel power disc brakes	(j) OPT	OPT	OPT	OPT	STD
Power steering	(k) OPT	OPT	OPT	OPT	OPT
Power operated windows	(l) NA	NA	OPT	OPT	OPT

HEAVY DUTY EQUIPMENT

Heavy duty suspension	(m) OPT	OPT	OPT	OPT	OPT
Outback Pack	(n) OPT	OPT	OPT	OPT	OPT
Class I Towing Pack	(o) (r) (s) OPT	OPT	OPT	OPT	OPT
Heavy Duty Pack for Towing	(p) (r) (s) OPT	OPT	OPT	OPT	OPT
Class II Towing Pack	(q) (r) (s) OPT	OPT	OPT	OPT	OPT

APPEARANCE EQUIPMENT

Styled wheel cover	OPT	OPT	OPT	OPT	NA
Metallic paint	(t) OPT	OPT	NCO	NCO	NCO

CODES TO CHART: STD means standard equipment OPT means optional at extra cost NA means not available on that model NCO means no cost option

Footnotes to chart:

Please read these notes in conjunction with the notes on engine and transmission combinations and tyre availability.

- (a) Tinted side and rear glass is included with factory-fitted integrated air conditioning. Tinted side and rear glass is not included as part of a non factory-fitted air conditioning.
- (b) AM radio/stereo cassette tape player includes lock-down aerial and twin speakers mounted in instrument panel.
- (c) AM/FM Multiplex radio/stereo cassette tape player includes lock-down aerial and four speakers.
- (d) Digital clock not available when front bench seat is specified. Front bench seat (brown vinyl covering) includes folding centre armrest and is available only with column shift transmission.
- (e) Rubber floor mats are available only when front bench seat is specified.
- (f) The content of the 'S Pack' is described in the commentary on Page 40.
- (g) 'Volante' sports alloy road wheels are optional at extra cost on Falcon GL and Fairmont models only. Fairmont Ghia has its own special alloy road wheels as standard.
- (h) Limited slip differential is not available with the 3.3 litre engine. It is mandatory at extra cost when the 4.9 litre engine with manual transmission is specified, or when 4-wheel power disc brakes or the 5.8 litre engine is specified.
- (i) Comprehensive instrumentation includes speedometer, tachometer, fuel, temperature and oil pressure gauges, volt meter, trip meter, 'low fuel' warning lamp, digital clock. Comprehensive instrumentation is not available when front bench seat is specified.
- (j) 4-wheel power disc brakes are optional at extra cost with 4.9 litre V8 engine and mandatory at extra cost with 5.8 litre V8 engine. Limited slip differential is mandatory at extra cost with 4-wheel power disc brakes.
- (k) Power steering is not available with 3-speed manual column shift transmission but is mandatory at extra cost when the 4.9 litre or 5.8 litre V8 engine and integrated air conditioning are specified in combination. Power steering is standard on Fairmont Ghia when the 4.9 litre or 5.8 litre V8 engine is specified.
- (l) Power operated windows are not available when manual or automatic column shift transmission is specified.

- (m) Heavy duty suspension consists of larger diameter, heavy duty shock absorbers and springs, increased ride height, increased diameter rear stabilizer bar (sedan only). Heavy duty suspension is included as part of the Outback Pack, Heavy Duty Pack for Towing and Class II Towing Pack.
- (n) Outback Pack consists of heavy duty suspension, heavy duty rear axle, heavy duty air cleaner (with 6-cylinder engines), engine sump guard and rear axle shock absorber protection plate.
- (o) The Class I Towing Pack is designed to provide a towing capability for loads with a gross weight of up to 907 kg (2,000 lbs.) (see Note (s) below) when used in conjunction with a suitable caravan or trailer braking system. The Pack consists of:
 - Tow Bar • Gooseneck • Wiring harness with 7 pin electrical connector.
 Note: The Caravan or trailer braking system and any other items (such as the tow ball and safety chains) required for the attachment of a trailer, caravan or other equipment to the vehicle are not supplied as part of the Pack and must be purchased at extra cost or be supplied by the owner.
- (p) The Heavy Duty Pack for Towing is a base option offered for the convenience of a purchaser who already owns a compatible tow bar and who wishes to have that tow bar transferred to the new vehicle. Although the purchaser's own tow bar may be suitable for use with the Heavy Duty Pack for Towing it may need to be adjusted or modified. The transfer of the purchaser's tow bar to the new vehicle and any required adjustments or modifications will be at additional cost to the purchaser. This Pack is designed to up-grade the base vehicle specifications to enable the towing of loads with a gross weight of up to 1587 kg (3,500 lbs.) (see Note (s) below) when used in connection with a suitable tow bar, hitch tow ball, caravan or trailer braking system and a Ford approved Spring Bar Kit. The Pack consists of:
 - Automatic transmission oil cooler • Larger cooling capacity heavy duty radiator on 4.9 litre models
 - Heavy duty suspension which consists of heavy duty shock absorbers and springs, increased ride height and increased diameter rear stabilizer bar (station wagons, utilities and vans do not have rear stabilizer bars) • Wiring harness with 7 pin electrical connection.
 Note: The tow bar, hitch tow ball, caravan or trailer braking system and spring bar kit and other items

- (such as safety chains) required for the attachment of a trailer, caravan or other equipment to the vehicle are not supplied as part of the Pack and must be purchased at extra cost or be supplied by the owner. For the required engine transmission and tyre specifications see Note (r) below.
- (q) The Class II Towing Pack up-grades the base vehicle specifications to the same level of towing capability as the Heavy Duty Pack for Towing (see note (p) above) and provides towing capacity for loads with a gross weight of up to 1587 kg (3,500 lbs.) (see Note (s) below) when used in conjunction with a suitable tow ball, caravan or trailer braking system and a Ford approved Spring Bar Kit. The Class II Towing Pack consists of those items which are supplied in the Heavy Duty Pack for Towing and the following additional items:
 - Body siderail reinforcements • Load distributing hitch • Heavy duty towing hitch • Chrome plated hitch box cover plate.
 Note: The tow ball, caravan or trailer braking system and the Spring Bar Kit and any other items (such as safety chains) required for the attachment of a trailer, caravan or other equipment to the vehicle are not supplied as part of the Pack and must be purchased at extra cost or be supplied by the owner.
- (r) The Class I Towing Pack, the Heavy Duty Pack for Towing and the Class II Towing Pack are designed to be incorporated in the vehicle during the assembly of the vehicle. When the Heavy Duty Pack for Towing or the Class II Towing Pack is ordered a 4.9 litre or a 5.8 litre V8 engine with their required mandatory extras and automatic transmission and ER70H14 tyres must also be ordered (at extra cost) as part of the vehicle's specifications. See also note
- (s) The actual towing capability and performance of a vehicle will depend upon the condition of the vehicle, the vehicle load, the vehicle specifications, including engine capacity, transmission type, axle ratio, tyre type and size, weather conditions, road gradient and other terrain conditions.
- (t) Consult the Ford Colour Selector or your authorised Ford Dealer to determine which colours are available in metallic paint.
- (u) When striped wool blend seat facings are specified on Fairmont Ghia map pockets on rear of front seats are deleted.

Ford Falcon GL, Fairmont and Fairmont Ghia Specifications

(Options are at extra cost unless otherwise stated)

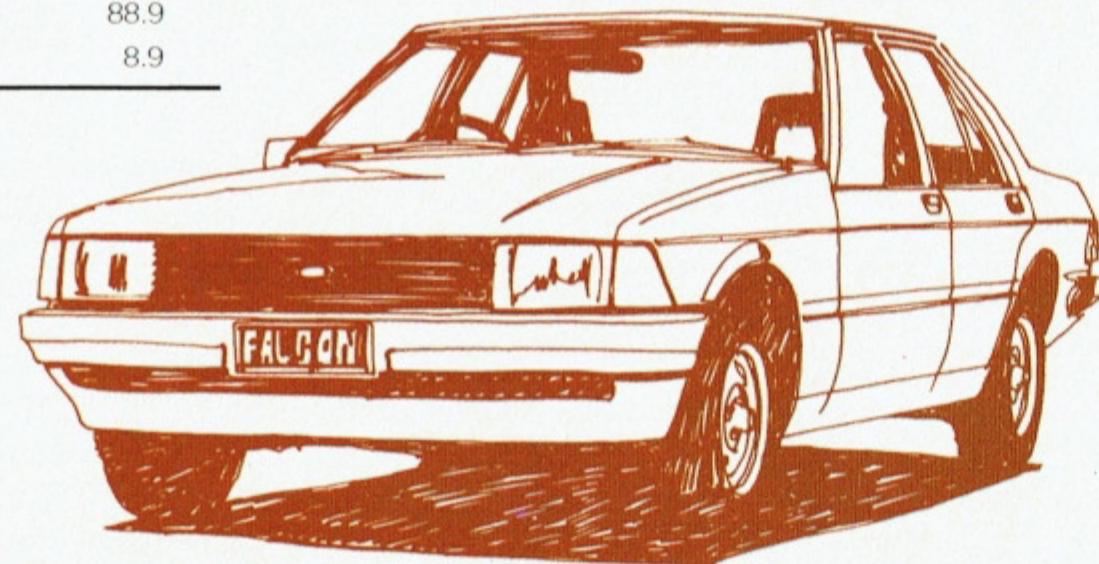
ENGINE AND TRANSMISSION COMBINATIONS	Falcon GL		Fairmont		Fairmont Ghia
	Sedan	Wagon	Sedan	Wagon	
3.3 litre crossflow 6-cylinder with:					
3-speed manual column shift	(1) STD	STD	NA	NA	NA
4-speed manual floor shift	(2) OPT	OPT	OPT	OPT	NA
3-speed automatic column shift	(7) OPT	OPT	OPT	OPT	NA
3-speed T-bar automatic	(2) OPT	OPT	OPT	OPT	NA
4.1 litre crossflow 6-cylinder with:					
3-speed manual column shift	(1) OPT	OPT	NA	NA	NA
4-speed manual floor shift	(2) OPT	OPT	OPT	OPT	OPT
3-speed automatic column shift	(7) OPT	OPT	OPT	OPT	NA
3-speed T-bar automatic	(2) OPT	OPT	STD	STD	STD
4.9 litre 4-barrel V8 with:					
	(3) (6)				
4-speed manual floor shift	(2) (4) OPT	OPT	OPT	NA	NA
3-speed automatic column shift	(7) OPT	OPT	OPT	OPT	NA
3-speed T-bar automatic	(2) OPT	OPT	OPT	OPT	OPT
5.8 litre 4-barrel V8 with:					
	(3) (5)				
4-speed manual floor shift	(2) OPT	NA	NA	NA	OPT
3-speed T-bar automatic	(2) OPT	NA	OPT	OPT	OPT

TYRE AVAILABILITY	Falcon GL		Fairmont		Fairmont Ghia
	Sedan	Wagon	Sedan	Wagon	
CR78S14 steel belt radial ply tyres-4 ply	STD	NA	NA	NA	NA
ER78S14 steel belt radial ply tyres-4 ply	OPT	STD	STD	STD	NA
ER70H14 steel belt radial ply tyres-6 ply (6)	OPT	OPT	OPT	OPT	STD

DIMENSIONS	Sedans		Wagons	
	Overall Length	4737 mm (186.5")		4982 mm (196.1")
Overall Width	1860 mm (73.2")		1860 mm (73.2")	
Overall Height	1374 mm (54.0")		1397 mm (55.0")	
Wheelbase	2818 mm (110.9")		2946 mm (116.0")	
Track - Front	1552 mm (61.1")		1552 mm (61.1")	
- Rear	1527 mm (60.1")		1527 mm (60.1")	
Wagon load capacity - to rear seat	-		1.39m ³ (49.25 ft ³)	
- to front seat (with rear seat folded down)	-		2.34 m ³ (82.53 ft ³)	
Wagon load length to front seat (with rear seat folded down)	-		2204 mm (86.7")	
Usable fuel tank capacity	77.0 litres (16.96 gal.)		72.7 litres (16.0 gal.)	
Luggage compartment capacity	0.42 m ³ (15.1 ft. ³)		-	
Turning Circle - curb to curb	11.5 m (37.8 ft.)		12.4 m (40.6 ft.)	

ENGINE SPECIFICATIONS	3.3 litre	4.1 litre	4.9 litre	5.8 litre
	6-cylinder	6-cylinder	8-cylinder	8-cylinder
Engine displacement (cc)	3280	4100	4900	5800
Bore (mm)	93.5	93.5	101.6	101.6
Stroke (mm)	79.5	99.3	76.2	88.9
Compression ratio (to 1)	8.8	9.0	9.2	8.9

Please note: All measurements, dimensions and capacities referred to above are approximate only.



Footnotes to charts:

Please read these notes in conjunction with the notes on option availability.

1. Power steering is not available with 3-speed manual column shift transmission.
2. All vehicles with floor-mounted transmissions are fitted with a centre console.
3. Power steering is mandatory at extra cost when integrated air conditioning is fitted with V8 engines.
4. Limited slip differential is mandatory at extra cost with 4.9 litre V8 engine and manual transmission.
5. Mandatory equipment, at extra cost, with the 5.8 litre engine: 4-wheel power disc brakes, limited slip differential, ER70H14 steel belt radial ply tyres.
6. ER70H14 steel belt radial ply tyres (6 ply) are mandatory at extra cost on Falcon GL and Fairmont sedans and wagons when V8 engine is specified.
7. When column shift is specified, centre console is not available.

CODES FOR CHARTS:

STD means standard equipment
OPT means optional at extra cost
NA means not available on that model

Always discuss your intended purchase carefully with your Ford Dealer before placing your order.

Ford Fairlane

A distinctive difference in prestige motoring.



Ford Fairlane

The practical design influence of Europe is immediately apparent in Fairlane's sleek, clean lines, but look a little closer and you'll find ample evidence of engineering refinements, design innovations and technological advances reflecting the needs and wants of today's prestige car driver.

With its aerodynamic styling, and weight-saving design, Fairlane's standard 4.1 litre six cylinder engine provides a good balance of performance and economy.

If you're looking for more performance and greater towing power there is the choice of a 4.9 litre or 5.8 litre four-barrel V8 engine (optional at extra cost).

Fairlane's wide track, long wheelbase and suspension geometry are all designed with one aim...to provide you with a well balanced combination of control and comfort.

The suspension is finely tuned to high quality steel belt radial tyres and the 4-wheel power disc brakes are standard. To further assist your travelling comfort, Fairlane has integrated air conditioning with ducting to the front and rear compartment; tinted-band, laminated windscreen and tinted side and rear windows.

An excellent ventilation system has been developed through the use of extraction vents in the rear pillars. There's a 'hi/lo' setting too, which allows you to have cool air on your face and warm air on your feet, helping to keep you warm but alert on long trips. Twin quartz halogen headlights pierce the darkness more effectively. Extensive use has been made of sound absorbing insulation materials, helping to provide a quieter, more relaxed driving environment. Taking these and the many other innovations into account, Fairlane is bound to be regarded as a car for the big country.



Ford Fairlane

Engineered with style.

Among Fairlane's many significant engineering features, one of the first things you'll notice is that it is shorter and sleeker than the traditional Australian 'big car'. There is less overhang both front and rear, resulting in a trim car that is light for its size, manoeuvrable and easy to handle. The low hood line and large glass area give you a commanding view of the road and

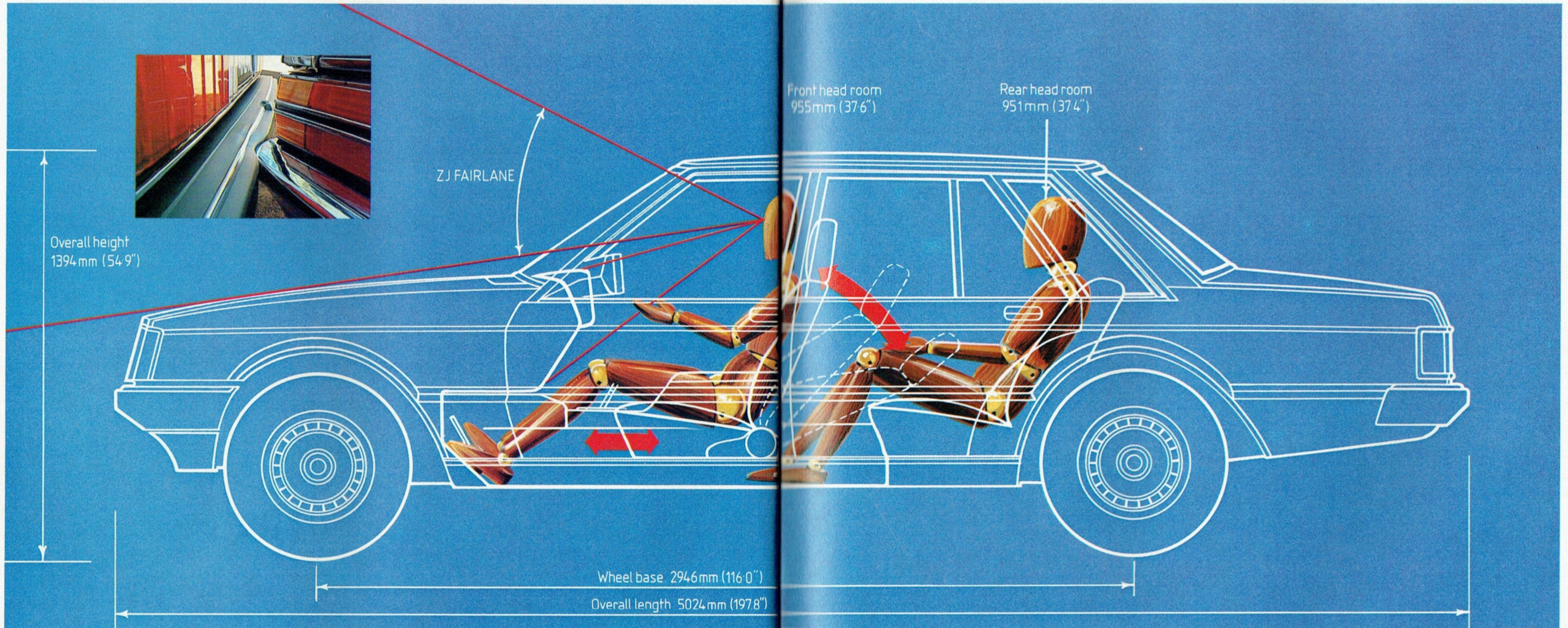
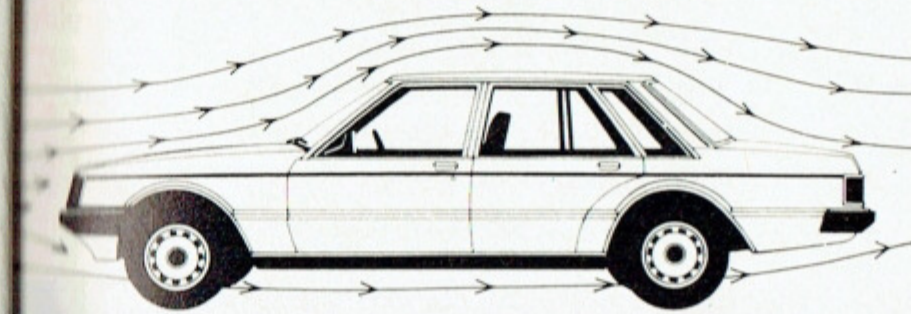
excellent general visibility. One of the most remarkable design aspects of the Fairlane is the efficient use of interior space. The amount of head, leg and shoulder room will really surprise you. The aerodynamic body styling reduces drag while providing efficient performance and a quiet ride through low wind noise. In addition to the excellent

handling characteristics and overall responsiveness, Fairlane has many important features

designed to help protect you and your passengers.

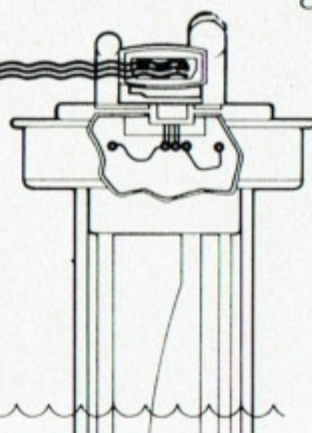
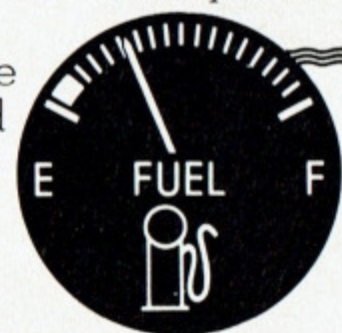
High strength, low alloy steel door beams are fitted to help reduce intrusion into the passenger compartment in the event of side-on impact. Front and rear crumple zones, designed to deform progressively on impact help to cushion

the passenger compartment from the effect of front and rear impacts and a one-piece, full foam crash pad improves protection for front seat occupants. Other items included for the protection of you and your passengers are: child-proof settings on rear door locks, hazard flashers and wrap-around front and rear turn indicators which are more clearly visible from the

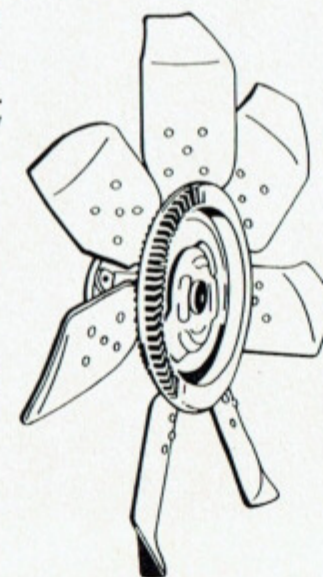


side as well as the front and rear of the car.

Incorporated into Fairlane are some real advances in automotive technology, such as: an electronic pulse speedometer system designed to provide improved accuracy and reliability; a more robust, more accurate fuel



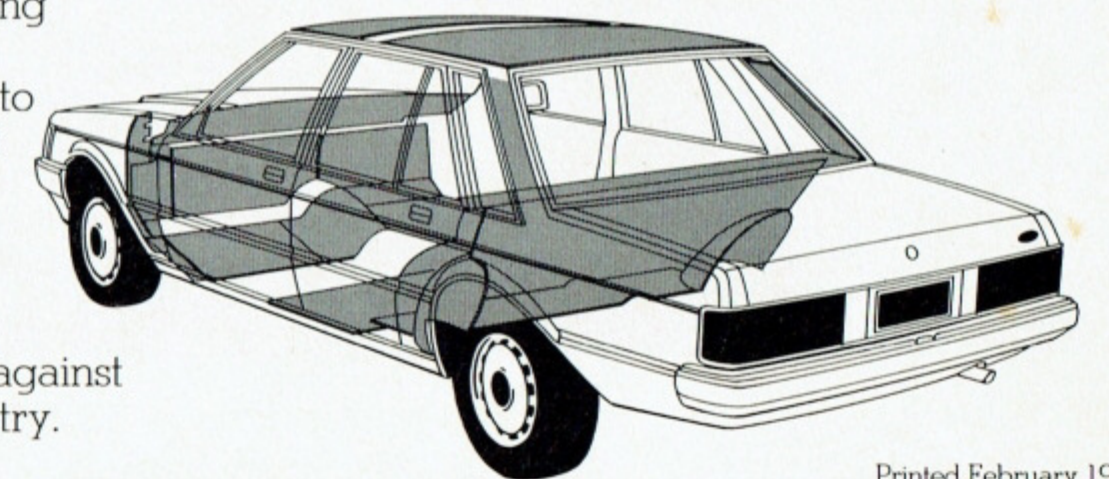
gauge system; lightweight energy-absorbing bumpers together with a soft deformable valance panel are designed to reduce the effect of minor parking and impact damage; the one-piece moulded instrument panel contains channels to retain and protect instrument wiring, helping to reduce the poten-



tial for wiring loom pinching and abrasion as well as reducing the potential for squeaks and rattles to develop. With optional V8 engines electronic ignition provides for more consistent and efficient fuel combustion and the viscous-clutch engine cooling fan is designed to rotate at less than full speed under all but very hot conditions, thus helping to improve fuel economy as well as reduce engine noise and vibration. Fairlane is engineered with three very important things in mind;

reliability, ease of maintenance and economy of maintenance. Features designed with these aims in mind include: the electronic fuel gauge sender system and the electronic speedometer. Instruments and con-

trols are more readily accessible and most are serviceable from the front of the panel. A number of components have been designed to make their servicing easier and less frequent, helping to reduce the cost of maintenance and replacement. One-piece door seals provide better protection against dust and water entry.



Ford Fairlane

A new standard of comfort.

From the moment you settle into the luxurious, cloth-covered seat and take the 'soft-feel' steering wheel, you begin to realise that this car has been built with your comfort in mind. Controls are within easy reach and switches are designed so that you can feel at a touch whether you should pull, turn or slide the control. Undoubtedly, Fairlane maintains a

grand tradition of prestige motoring as a browse through the list of just a few of its standard features will show:

- 4.1 litre crossflow 6 cylinder engine
- 3-speed T-bar automatic transmission
- ER70 H14 steel belt radial ply tyres
- 4-wheel power disc brakes
- Limited slip differential
- Twin quartz halogen

- headlights
- Power steering
- 'Soft-feel' twin spoke steering wheel
- Instrumentation includes voltmeter, oil pressure, temperature and fuel gauges
- AM push-button radio with power aerial
- Digital clock with date and month display on demand
- Left and right hand side remote control exterior rear-view mirrors
- Integrated air

- conditioning with ducting to rear compartment
- Tinted side and rear glass
- Tinted-band, laminated windscreen
- Intermittent wipers
- Outboard inertia reel seat belts, front and rear
- Hazard flashers
- Outboard passenger grab handles

Interiors show power operated windows. (Optional at extra cost.)



Ford Fairlane

Options and Specifications

(Options are at extra cost unless otherwise stated)

CONVENIENCE AND APPEARANCE EQUIPMENT:	FORD FAIRLANE	
AM push-button radio/stereo cassette tape player	(a)	OPT
AM/FM push-button Multiplex radio/stereo cassette tape player	(b)	OPT
Vinyl seat covering		NCO
Leather seat covering		OPT
Metallic paint	(c)	NCO
"Volante" sports alloy road wheels		OPT

POWER EQUIPMENT:	FORD FAIRLANE	
Power operated windows	(d)	OPT

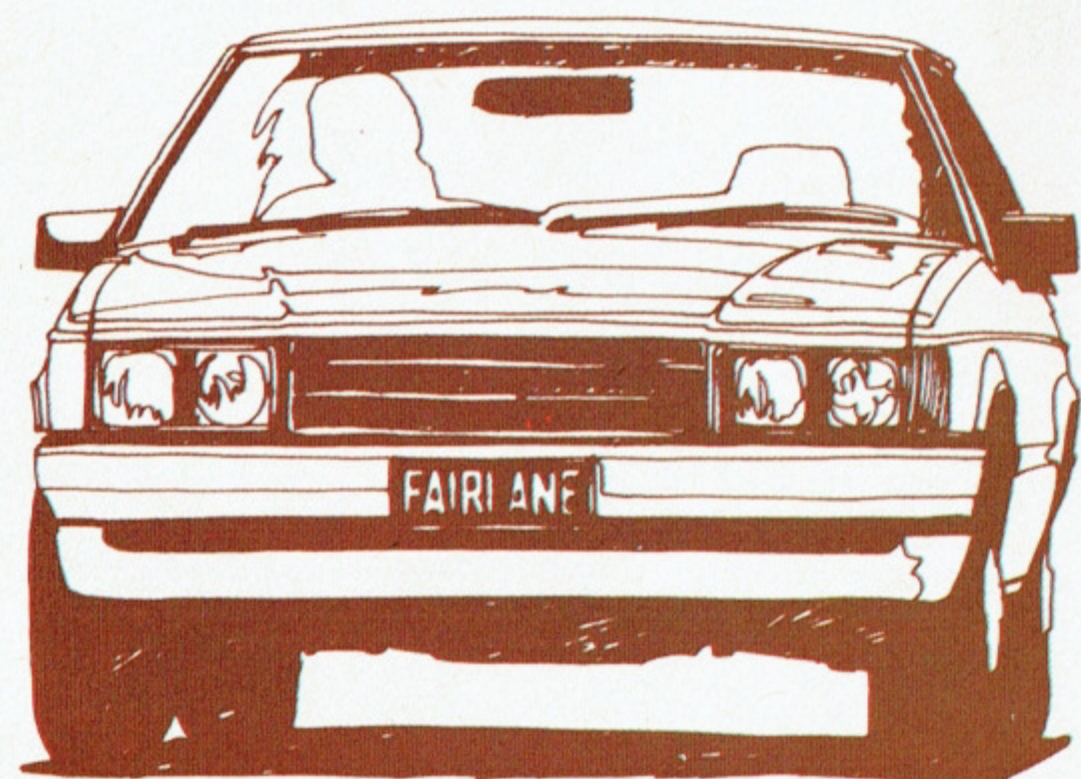
HEAVY DUTY EQUIPMENT:	FORD FAIRLANE	
Heavy duty suspension	(e)	OPT
Outback Pack	(f)	OPT
Class I Towing Pack	(g)	OPT
Heavy Duty Pack for Towing	(h)	OPT
Class II Towing Pack	(i)	OPT

ENGINE AND TRANSMISSION COMBINATIONS:	FORD FAIRLANE	
4.1 litre crossflow 6 cylinder with:		
3-speed T-bar automatic		STD
3-speed automatic column shift		OPT
4.9 litre 4-barrel V8 with:		
3-speed automatic column shift		OPT
3-speed T-bar automatic		OPT
5.8 litre 4-barrel V8 with:		
3-speed T-bar automatic		OPT

TYRE AVAILABILITY:	FORD FAIRLANE	
ER70H14 steel belt radial ply tyres - 6 ply		STD

DIMENSIONS:	
Overall length	5024 mm (197.8")
Overall width	1868 mm (73.5")
Overall height	1394 mm (54.9")
Wheelbase	2946 mm (116.0")
Track... Front	1552 mm (61.1")
Track... Rear	1527 mm (60.1")
Fuel tank capacity	80.0 litres (17.6 gals.)
Boot capacity	.46 m ³ (16.1 ft. ³)
Turning circle curb to curb	12.7 m (41.9 ft.)

ENGINE SPECIFICATIONS:	4.1 litre 6 cyl	4.9 litre 4-barrel V8	5.8 litre 4-barrel V8
Engine displacement (cc)	4100	4900	5800
Bore (mm)	93.5	101.6	101.6
Stroke (mm)	99.3	76.2	88.9
Compression ratio (to 1)	9.0	9.2	8.9



Please note: All measurements, dimensions and capacities referred to above right are approximate only.

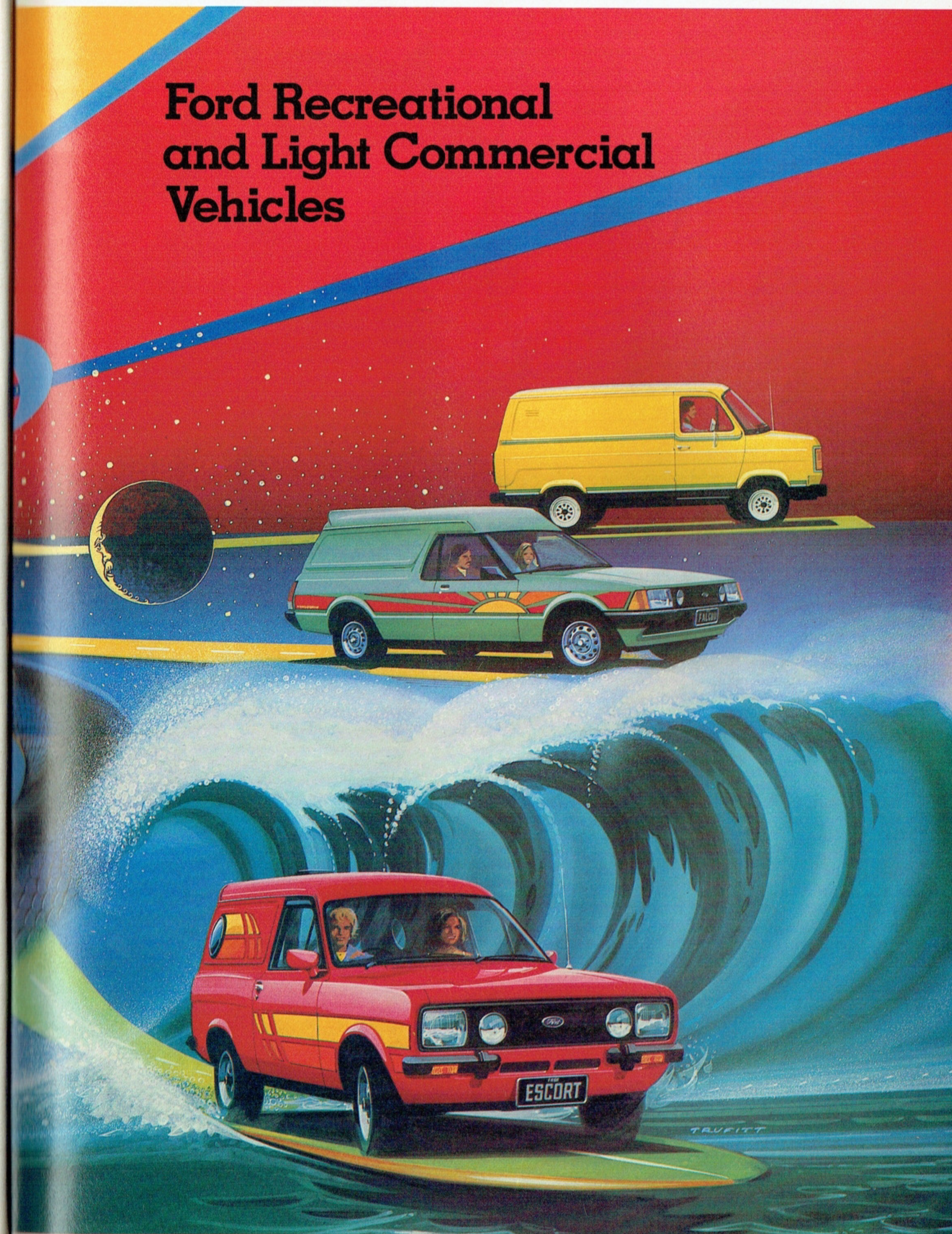
Always discuss your intended purchase carefully with your Ford Dealer before placing your order.

NOTES TO CHART:

- (a) AM push-button radio/stereo cassette tape player includes power aerial and two front speakers mounted in instrument panel.
- (b) AM/FM Multiplex radio/stereo cassette tape player includes power aerial and four speakers.
- (c) Consult the Ford Colour Selector or your authorized Ford Dealer to determine which colours are available in metallic paint.
- (d) Power operated windows are not available with column shift transmission.
- (e) Heavy duty suspension consists of larger diameter, heavy duty shock absorbers and springs, increased ride height, increased diameter rear stabilizer bar. Heavy duty suspension is included as part of the Outback Pack, Heavy Duty Pack for Towing and Class II Towing Pack.
- (f) Outback Pack consists of heavy duty suspension, heavy duty rear axle, engine sump guard and rear axle shock absorber protection plate.
- (g) Class I Towing Pack see notes on (o), (r) & (s) on page 41.
- (h) Heavy Duty Pack for Towing see notes (p), (r) & (s) on page 41.
- (i) Class II Towing Pack see notes (q), (r) & (s) on page 41.

STD means standard equipment.
 NA means not available on this model.
 NCO means no cost option.
 O/R means option at reduced cost.

Ford Recreational and Light Commercial Vehicles





You're at home on the road with the great styling and comfort of the Falcon Sundowner Van. Take a look at the engineering advances and comprehensive feature level of today's Cruisin' Van from Ford. Long range

quartz halogen driving lights, reclining bucket seats with striped wool blend seat facings, comprehensive instrumentation including tacho, oil and temperature gauges and convenient lift tail-gate. Plus advanced auto-

motive technology features such as energy absorbing bumpers and electronic speedometer—all help make Ford Falcon Sundowner Van one of the best equipped Vans around.



Illustrated above and left: Falcon Sundowner Van with optional 3-speed T-bar automatic and AM/FM Multiplex radio/stereo cassette tape player.



Ford Falcon Sundowner Van

The cruisin' van from Ford

Ford Falcon Sundowner Standard Equipment Highlights: As for Falcon GL Van but with these different and/or upgraded features:

- 4.1 litre crossflow 6-cylinder engine
- 4-speed manual floor shift transmission
- ER70H14 steel belt radial ply tyres
- Slotted steel road wheels with chrome trim rings
- Sports instrumentation including tachometer; fuel, temperature

- and oil pressure gauges; volt meter; trip meter and 'low fuel' warning lamp
- Digital clock with day and month display
- Striped wool blend cloth seat facings
- Cut pile carpet on passenger compartment floor
- Interior lamp with twin side spot lights to illuminate load area
- Load area courtesy panels with integral courtesy lights and ashtrays

- Interior handle on tail-gate
- Front spoiler
- Rear roof spoiler
- Long range driving lights
- Distinctive exterior stripes and 'Sundowner' decals
- 10 cwt suspension in lieu of 15 cwt suspension

And with these Falcon GL Van features deleted:

- Body side protection mouldings
- Van side glass

Colour combinations shown on pages 51 and 52 have been used for illustration purposes only and may not be available—consult your authorised Ford Dealer for available colour combinations.

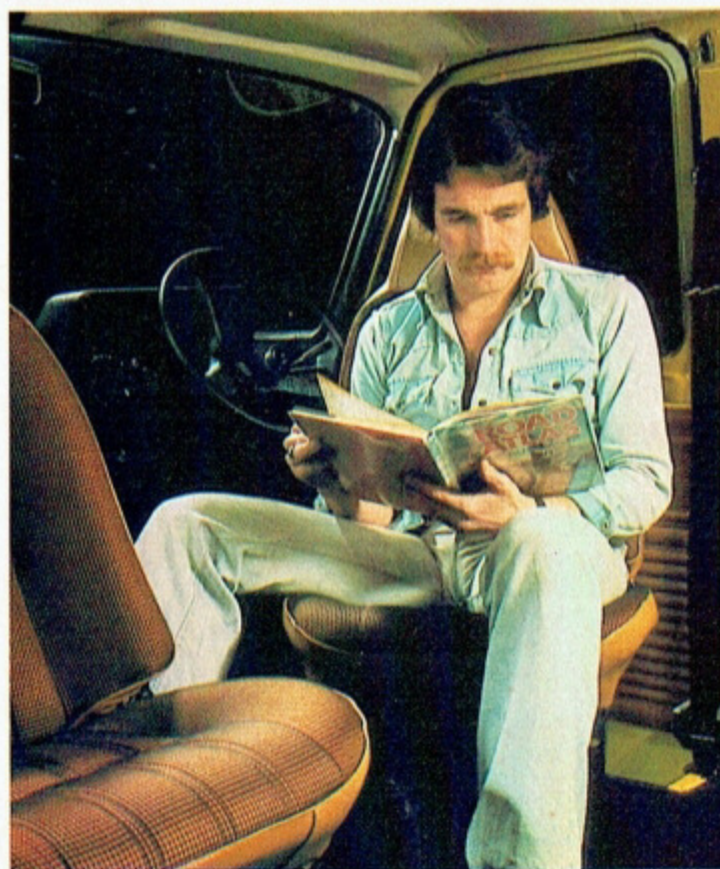
Ford Transit Sundowner Van

The Sundowner Supervan

FORD TRANSIT SUNDOWNER VAN STANDARD EQUIPMENT HIGHLIGHTS:

- 4.1 litre crossflow 6-cylinder engine
- 3-speed manual floorshift transmission
- Power assisted dual line braking system
- Front disc brakes
- FR78SR14-PR steel belt radial ply tyres

- AM push button radio
- Cigarette lighter
- Electric clock
- Speedometer/odometer with tripmeter
- 2-speed windscreen wipers with electric washers
- 2-speed heater/demister
- Face level, power assisted ventilation
- Steering column control stalks for:
 - turn/lane change signals, high/low



- beam, headlight flasher, horn
- windscreen wiper/washer
- parking and headlights
- Front passenger side glove box
- Anti-glare interior rear-view mirror
- Lowline 'Swinglok' left and right hand exterior rear-view mirrors
- Rectangular quartz halogen headlights
- Outboard inertia reel front seat belts
- Front bucket seats, adjustable for reach and rake, with swivel bases
- "Houndstooth" cloth seat upholstery
- Carpet in front and rear compartments

- Full length insulated headlining
- Interior release on side load door
- Interior courtesy light operated by front doors
- Rear compartment light with switch on instrument panel
- P.V.C. trim panels on side and rear doors
- Special Sundowner exterior treatment including:
 - steel spoked wheels
 - bodyside stripe
 - Sundowner decals
 - black, front full width bumper and rear quarter bumpers with rubber inserts
 - matt black grille and rocker panels

Ford Escort Sundowner Van

The free wheelin' van from Ford

FORD ESCORT SUNDOWNER VAN STANDARD EQUIPMENT HIGHLIGHTS:

- Including these features which are standard on Escort GL Van:
- 1.6 litre crossflow 4-cylinder engine
 - 4-speed manual floorshift transmission
 - Power assisted front disc brakes
 - Centre console

- AM push-button radio
- Cigarette lighter (illuminated)
- Outboard inertia reel seat belts
- Loop pile carpet in passenger compartment
- Prismatic day/night interior rear-view mirror
- Styled right and left hand exterior rear-view mirrors
- Ventilation system with individual directional ball vents and under-dash vents



Illustrated above: Ford Escort Sundowner Van with ski rack accessory (available at extra cost).

- 2-speed heater/demister with illuminated slide controls
- 2-speed windscreen wipers with 2-jet washers
- Steering column control stalks for
 - Turn/lane change signals, high/low beam, headlight flasher, horn button
 - 'Flick-wipe' windscreen wiper/washer
- Parking and headlights
- Driver's side trinket tray
- Front passenger side parcel shelf
- Hazard flashers
- Headlining in load area
- Quartz halogen headlights

and with these additional features which are not standard on Escort GL Van:

- ZR70S steel belt radial ply tyres
- Chrome wheel trim rings
- Long-range driving lights
- Comprehensive instrumentation including tachometer, fuel and temperature gauges, odometer, speedometer and trip-meter
- Load area fluorescent roof light
- Load area front extension located behind bucket seats
- Front bucket seats with forward folding mechanism

- Striped cloth seat facings on front bucket seats
- 254 mm (10") diameter tinted bubble windows in rear compartment
- Black vinyl cover for spare wheel located in rear load compartment
- Distinctive exterior striping and decal
- Black finish bumperettes with front bumper overrides
- 'Soft-feel' steering wheel
- Black-out paint treatment
- Interior rear door release handle
- Loop pile carpet in load area

Ford Courier XLT.

A pick-up with a 'luxury' feeling.

Ford Courier XLT pick-up is great for commercial use and fantastic when it comes to having a good time.

Courier XLT is a long wheelbase pick-up which offers a .75 tonne payload and a high degree of comfort with 5-speed manual floor shift overdrive transmission and a 3.63 rear axle ratio for highway cruising, radial tyres, AM push-button radio, cut pile carpet, day/night interior rear-view mirror, door-operated courtesy light and on the outside, bright chrome feature.

Throw the surfboards, canoes, trail bikes or camping gear in the back of a Courier XLT and you're ready to go!

FORD COURIER XLT PICK-UP STANDARD EQUIPMENT HIGHLIGHTS:

- 1.8 litre overhead cam 4-cylinder engine
- 5-speed manual floor shift overdrive transmission
- Servo assisted dual line brakes
- Die cast tie down hooks on load area
- Single hand tailgate release
- Wind-down spare wheel carrier
- Adjustable bench seat
- Hinged seat back
- Tool kit plus jack
- Under bonnet courtesy light

- 'Soft-feel' steering wheel
- Laminated windscreen
- Tinted side and rear glass
- Flow through ventilation
- Prismatic day/night interior rear-view mirror
- Heater/Demister
- AM push-button radio
- Cigarette lighter
- Passenger side glove box
- Package tray
- Steering column control stalk for turn signals, high/low beam and wiper/washer
- Door operated courtesy light
- Interior dome light
- Package tray
- Front quarter vents
- Hazard flashers

OPTIONAL EQUIPMENT (AVAILABLE AT EXTRA COST) INCLUDES FREE WHEELIN' DEALER-FITTED ACCESSORIES COMPRISING:

- Push bar
- Vinyl bodyside stripes
- Pick-up box
- Mounted rally bar
- Rear stop bumper

Consult your Ford Dealer for further details, specifications and extra cost options available with Ford Courier XLT.



Ford F100 4-Wheel Drive

Explore the big country

From highway to hillside, driveway to dockside, Ford F100 4-Wheel Drive takes Australia in its stride. For the farmer, fisherman, hunter and miner, it's the "big country" machine. Try it for size. Brute strength from a V8 engine. Four Wheel Drive toughness. It's the rakish, rugged and reliable machine with comfort up front and good load space behind.

Discover Ford F100 4-Wheel Drive—the way to explore the big country.

FORD F100 4-WHEEL DRIVE STANDARD EQUIPMENT HIGHLIGHTS:

- 5.8 litre V8 engine
- 4-speed manual floor shift transmission with synchromesh on 2nd, 3rd and 4th gears
- Transfer gear box to allow selection of three drive modes:
 - 2-wheel drive—high transfer ratio
 - 4-wheel drive—high transfer ratio
 - 4-wheel drive—low transfer ratio
- Power take-off facility
- Servo assisted brakes
- Front axle fitted with manual free wheel hubs

- Adjustable bench seat
- Lap/sash seat belts for driver and left hand passenger with centre lap seat belt
- Interior bonnet release
- Interior courtesy light operated by both doors
- Glove compartment
- Foot operated windscreen washers
- Rear wheel mudflaps

OPTIONAL EQUIPMENT (AVAILABLE AT EXTRA COST) INCLUDES 3-SPEED AUTOMATIC TRANSMISSION AND THE XLT OPTION PACK COMPRISING:

- AM push-button radio
- Loop pile carpet
- 'Houndstooth' cloth seat upholstery
- White vinyl tonneau cover
- Front bumper overriders
- Steel spoked wheels
- Rear step bumper
- Lowline "Swinglok" exterior rear-view mirrors
- XLT badges
- Bodyside protection mouldings
- Bright windscreen and rear window surrounds
- Bright drip rails, bodyside mouldings with black vinyl insert, lower bodyside mouldings and tailgate mouldings.

Consult your Ford Dealer for further details, specifications and extra cost options available with Ford F100 4-Wheel Drive.



Illustrated: Ford F100 4-Wheel Drive with XLT Option Pack (available at extra cost)

Ford Falcon and Falcon GL Utilities

Great work, Australia.

FORD FALCON UTILITY STANDARD EQUIPMENT HIGHLIGHTS:

- 3.3 litre crossflow 6-cylinder engine
- 3-speed manual column shift transmission
- Power front disc brakes
- ER78S14 steel belt radial ply tyres
- Styled steel road wheels
- Rectangular quartz halogen headlights



Today's Ford Falcon and Falcon GL utilities. Designed to economise on exterior dimensions, yet to provide adequate interior passenger and load space. The use of thick gauge steel and a practical floor profile on Falcon utility, give the load compartment floor the strength it needs for loads up to 750 kg. Cab doors are framed for rigidity. Side air extraction windows combined with 3-speed fan boosted ventilation provide an effective air flow through the passenger compartment. Falcon Utility—smooth ride, easy handling and manoeuvrability. Efficient engine performance and operating economy. Designed for reliability, durability and ease and economy of maintenance.



- Gas strut for easy lift engine hood
- Side air extraction windows
- 'Soft-feel' 4-spoke steering wheel
- Bench seat with folding centre armrest
- Rubber floor mat in passenger compartment
- Power assisted ventilation
- 3-speed heater/demister
- Steering column control stalk for turn/lane change signals, high/low beam, headlight flasher and horn

- button
- Prismatic day/night rear view mirror
- Styled left and right hand remote control rear view mirrors
- Dash mounted handbrake with trigger release
- Lockable front passenger glove box and dash integrated parcel tray
- 'Lights on' warning lamp
- Cigarette lighter

Falcon GL Utility equipment highlights as for Falcon Utility but with these different and/or upgraded features:

- Reclining bucket seats with folding centre armrest
- Carpeted passenger compartment floor
- Centre console with cigarette lighter and ashtray
- Bodyside protection mouldings
- Tonneau cover—Bungi cord type



Illustrated above and left: Falcon GL Utility with optional 4.1 litre engine, 4 speed manual transmission and AM push button radio (available at extra cost).

Ford Falcon and Falcon GL Vans

A skilful combination.

FORD FALCON VAN STANDARD EQUIPMENT HIGHLIGHTS:

- 3.3 litre crossflow 6-cylinder engine
- 3-speed manual column shift transmission
- Power front disc brakes
- ER78S14 steel belt radial ply tyres
- Styled steel wheels
- Rectangular quartz halogen headlights
- Gas strut for easy lift engine hood
- Side air extraction windows

- 'Soft-feel' 4-spoke steering wheel
- Bench seat with folding centre armrest
- Rubber floor mat in passenger compartment
- Power assisted ventilation
- 3-speed heater/demister
- Steering column control stalk for turn/lane change signals, high/low beam, headlight flasher and horn button
- Prismatic day/night rear view

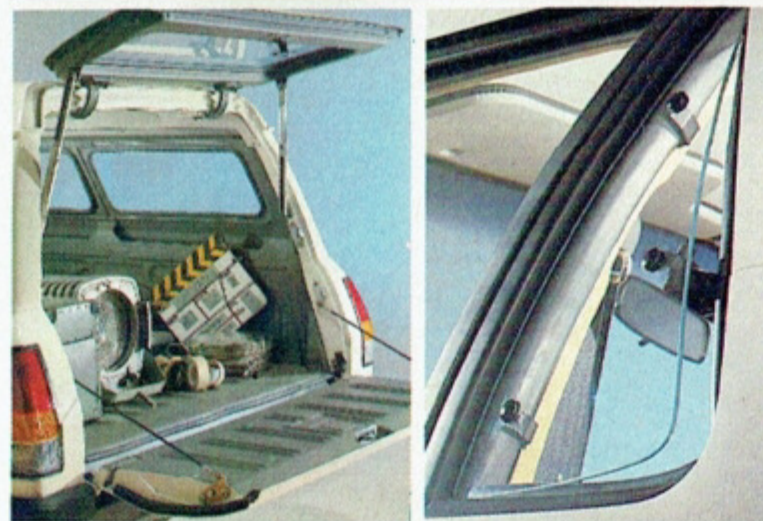
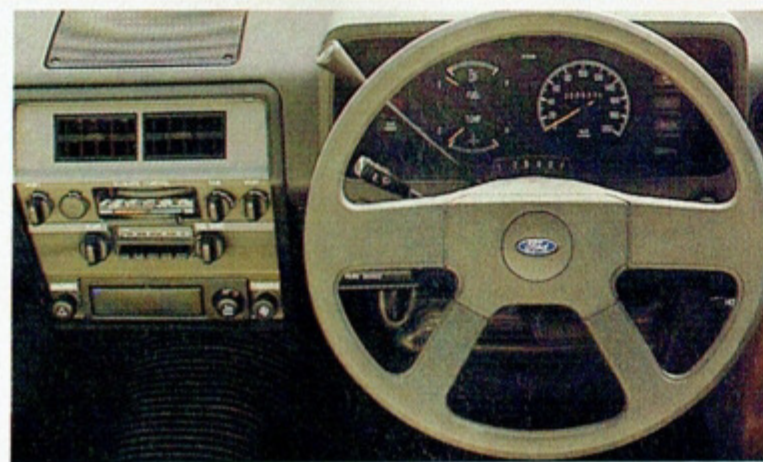
- mirror
 - Styled left and right hand remote control rear view mirrors
 - Dash mounted handbrake with trigger release
 - Lockable front passenger glove box and dash integrated parcel tray
 - 'Lights on' warning lamp
 - Cigarette lighter
 - Side hinged rear doors
- Falcon GL Van standard equipment

highlights as for Falcon Van but with these different and/or upgraded features:

- Reclining bucket seats with folding centre armrest
- Carpeted passenger compartment floor
- Rear load area headlining
- Centre console with cigarette lighter and ashtray
- Bodyside protection mouldings
- Lift tail-gate
- Side glass in load compartment



Illustrated above and right: Ford Falcon Van with optional AM push-button radio and 3-speed automatic column shift transmission (both available at extra cost).



Illustrated above left: Rear tailgate/liftgate standard on Falcon GL Van and optional at extra cost on Falcon Van.

Illustrated above right: Side opening quarter window standard on Falcon and Falcon GL Vans.

Illustrated right: Falcon Van with optional 4.1 litre engine and AM push-button radio (available at extra cost).

Today's Falcon Van skilfully combines the functional features of a commercial vehicle with the style, comfort and engineering attributes of the World Class Falcon Sedan. Steel belt radial ply tyres, quartz halogen headlights and side air extraction windows are standard. Lift tailgate is standard on Falcon GL Van while rear side-hinged doors are standard on Falcon Van. Strength and rigidity is found in the flat, steel ribbed floor and the framed passenger compartment door. From the energy absorbing bumpers to the advanced electrocoat body corrosion resistance treatment, you'll find Falcon has the technology and engineering to make it one of Australia's outstanding Vans.



Ford Falcon Sundowner, Falcon and Falcon GL Utilities and Vans

Options and Specifications (Options are at extra cost unless otherwise stated)

OPTIONAL EQUIPMENT	Falcon Van	Falcon Utility	Falcon GL Van	Falcon GL Utility	Falcon Sundowner Van
CONVENIENCE EQUIPMENT:					
Integrated air conditioning	OPT	OPT	OPT	OPT	OPT
AM push-button radio with lock-down aerial	OPT	OPT	OPT	OPT	OPT
AM push-button radio/stereo cassette tape player	(a) OPT	OPT	OPT	OPT	OPT
AM/FM push-button Multiplex radio/stereo cassette tape player	(b) OPT	OPT	OPT	OPT	OPT
Intermittent windscreen wipers	OPT	OPT	OPT	OPT	STD
Front bench seat (brown vinyl)	(c) STD	STD	NCO	NCO	NA
Tonneau cover (bungy-cord type)	NA	OPT	NA	STD	NA
Lift tailgate	OPT	NA	STD	NA	STD
Side opening rear doors	STD	NA	O/R	NA	NA
Van side glass	OPT	NA	STD	NA	OPT
Delete van side glass	STD	NA	O/R	NA	STD
Digital clock with date and month display	(d) NA	NA	OPT	OPT	STD
Rubber floor mat	(e) STD	STD	O/R	O/R	NA
Striped wool blend seat facings	NA	NA	OPT	OPT	STD
HEAVY DUTY EQUIPMENT/ TOWING EQUIPMENT:					
15 cwt load capacity	STD	STD	STD	STD	OPT
10 cwt load capacity	(f) O/R	O/R	O/R	O/R	STD
Outback Pack	(g) OPT	OPT	OPT	OPT	OPT
Class I Towing Pack	(h) OPT	OPT	OPT	OPT	OPT
Heavy Duty Pack for Towing	(i) OPT	OPT	OPT	OPT	OPT
Class II Towing Pack	(j) OPT	OPT	OPT	OPT	OPT
SPORTS TYPE EQUIPMENT:					
'S Pack'	(k) NA	NA	OPT	OPT	NA
'Volante' sports alloy road wheels	OPT	OPT	OPT	OPT	OPT
Limited slip differential	(l) OPT	OPT	OPT	OPT	OPT
Long range driving lights	OPT	OPT	OPT	OPT	STD
Tinted-band, laminated windscreen	OPT	OPT	OPT	OPT	OPT
POWER EQUIPMENT:					
4-wheel power disc brakes	(m) OPT	OPT	OPT	OPT	OPT
Power steering	(n) OPT	OPT	OPT	OPT	OPT
APPEARANCE EQUIPMENT:					
Wheel covers	OPT	OPT	OPT	OPT	NA
Metallic paint	(o) OPT	OPT	OPT	OPT	OPT
ENGINE AND TRANSMISSION COMBINATIONS:					
3.3 litre cross-flow 6-cylinder with:					
3-speed manual column shift	(1) STD	STD	STD	STD	NA
3-speed auto column shift	OPT	OPT	OPT	OPT	NA
3-speed T-bar auto	(2) NA	NA	OPT	NA	NA
4.1 litre cross-flow 6-cylinder with:					
3-speed manual column shift	(1) OPT	OPT	OPT	OPT	NA
3-speed auto column shift	OPT	OPT	OPT	OPT	NA
4-speed manual floor shift	(2) NA	NA	OPT	OPT	STD
3-speed T-bar auto	(2) NA	NA	OPT	OPT	OPT
4.9 litre 4-barrel V8 with:					
3-speed auto column shift	(3) OPT	OPT	NA	NA	NA
4-speed manual floor shift	(2)(4) NA	NA	OPT	OPT	OPT
3-speed T-bar auto	(2) NA	NA	OPT	OPT	OPT
5.8 4-barrel V8 with:					
4-speed manual floor shift	(3)(5) (2) NA	NA	OPT	NA	OPT
TYRE AVAILABILITY:					
ER78S14 steel belt radial ply tyres (4 ply rating)	Standard on 6-cylinder with 10 cwt load capacity option except Sundowner Van where ER70H14 (6 ply) tyres are fitted.				
ER78S14 steel belt radial ply tyres (6 ply rating)	Standard on 6-cylinder with 15 cwt load capacity.				
ER70H14 steel belt radial ply tyres (6 ply rating)	Mandatory at extra cost on 8-cylinder. Optional at extra cost on 6-cylinder. Standard on Sundowner or when 'S Pack' is specified.				

Footnotes to charts on left.

(a) AM radio/stereo cassette includes lock-down aerial with twin speakers.
 (b) AM/FM Multiplex radio/stereo cassette includes lock-down aerial and four speakers on Vans and Sundowner, two speakers on Utilities.
 (c) Digital clock not available when front bench seat is specified. Front bench seat includes folding centre arm rest and is available only with column shift transmission.
 (d) Digital clock is not available when front bench seat is specified.
 (e) Rubber floor mats are available only when front bench seat is specified.
 (f) 10 cwt load capacity is not available with Outback Pack, Class II Towing Pack or Heavy Duty Pack for Towing.
 (g) Outback Pack consists of heavy duty rear-axle, heavy duty air cleaner (6 cylinder only), engine sump guard and rear axle shock absorber protection plate.
 (h) Class I Towing Pack. See notes (o)(r) & (s) on page 41.
 (i) Heavy Duty Pack. See notes (p)(r) & (s) on page 41.
 (j) Class II Towing Pack. See notes (q)(r) & (s) on page 41.
 (k) 'S Pack' includes the following different or upgraded features: • Distinctive paint treatment • Slotted steel road wheels with chrome trim rings • Comprehensive instrumentation including speedometer, tachometer, fuel, temperature and oil pressure gauges; volt meter; trip meter; 'low fuel' warning lamp and digital clock • Intermittent windscreen wipers • Striped wool blend cloth seat facings • Front spoiler • Long range driving lights • ER70H14 steel belt radial ply tyres • Delete body side mouldings.
 (l) Limited slip differential is not available when: • 3.3 litre engine is specified, or • 4.9 litre engine in combination with 15 cwt load capacity is specified (unless 4-wheel disc brakes are also specified). Limited slip differential is mandatory at extra cost when: • 5.8 litre engine is specified, or • 4-wheel disc brakes are specified, or • 4.9 litre engine in combination with manual transmission and 10 cwt load capacity is specified.
 (m) 4-wheel power disc brakes are optional at extra cost with 4.9 litre V8 engine and mandatory at extra cost with 5.8 litre V8 engine. Limited slip differential is mandatory at extra cost with 4-wheel power disc brakes.
 (n) Power steering is not available with 3-speed manual column shift transmission but is mandatory at extra cost when the 4.9 litre or 5.8 litre V8 engine and integrated air conditioning are specified in combination.
 (o) Consult the Ford Colour Selector or your authorized Ford Dealer to determine which colours are available in metallic paint.

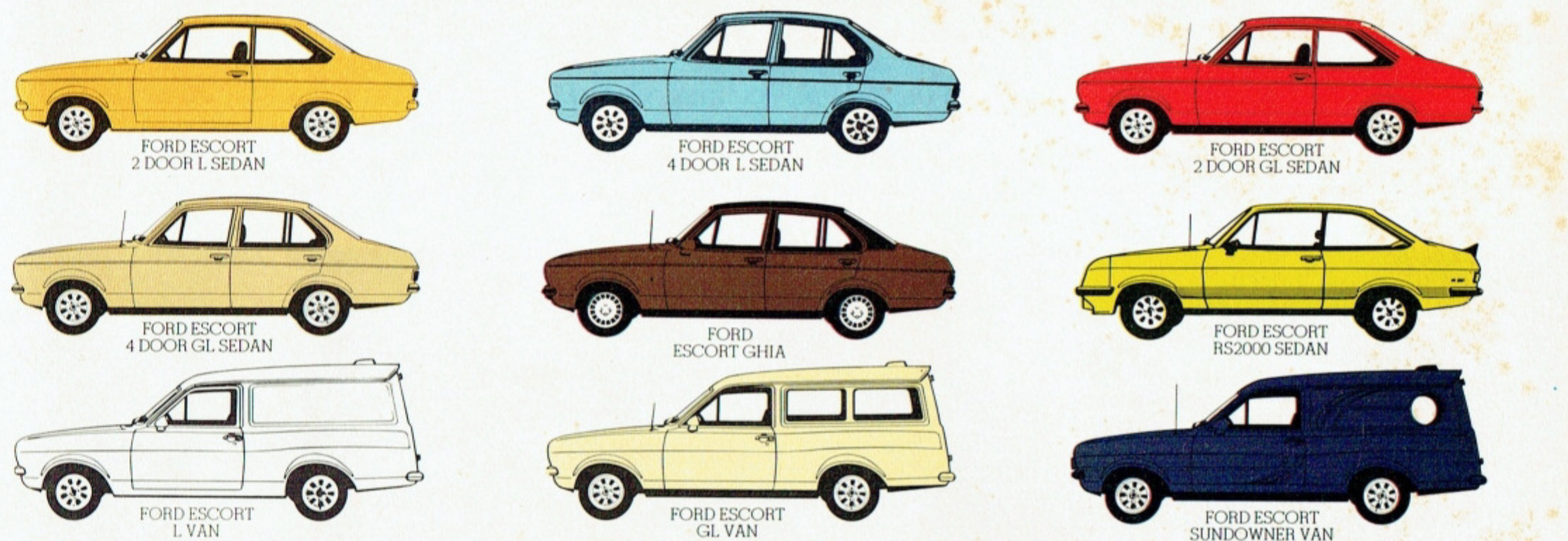
- Power steering is not available with 3-speed manual column shift transmission.
- All vehicles with floor-mounted transmissions are fitted with a centre console.
- Power steering is mandatory at extra cost when integrated air conditioning is fitted with V8 engines.
- Limited slip differential is mandatory at extra cost with 4.9 litre V8 engine and manual transmission when 10 cwt suspension is specified.
- Mandatory equipment, at extra cost, with the 5.8 litre engine: 4-wheel power disc brakes, limited slip differential, ER70H14 steel belt radial ply tyres.

Engine Specifications:	3.3 litre 6-cyl.	4.1 litre 6-cyl.	4.9 litre 8-cyl.	5.8 litre 8-cyl.
Engine displacement (cc)	3280	4100	4900	5800
Bore (mm)	93.5	93.5	101.6	101.6
Stroke (mm)	79.5	99.3	76.2	88.9
Compression ratio (to 1)	8.8	9.0	9.2	8.9

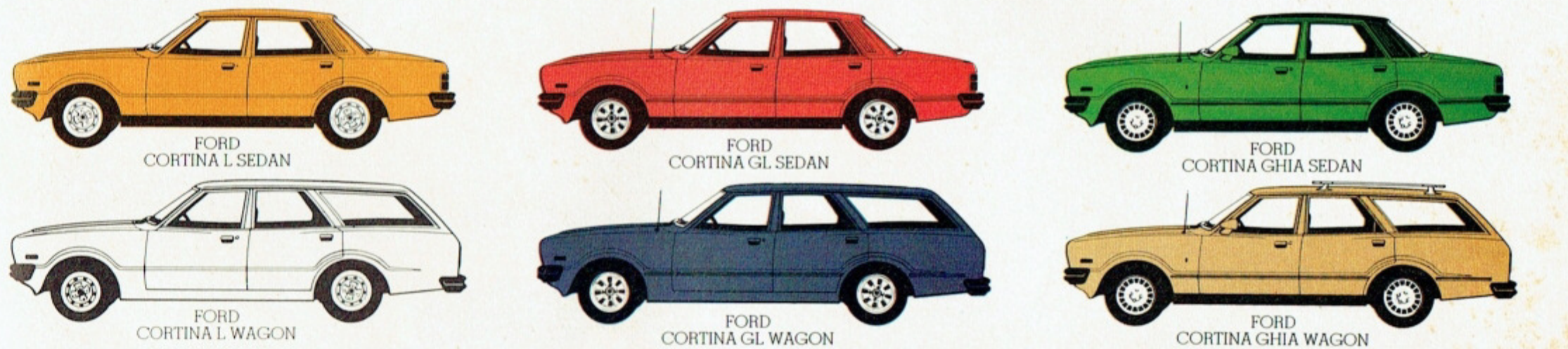
Dimensions:	
Overall length	4867 mm (191.6")
Overall width	1859 mm (73.2")
Overall height - Utility	1381 mm (54.3")
Overall height - Van	1603 mm (63.1")
Wheelbase	2946 mm (116.0")
Track - front	1552 mm (61.1")
Track - rear	1527 mm (60.1")
Ground clearance	162 mm (6.4")
Max. load length (tailgate down)	2640 mm (103.9")
Max. load length (tailgate closed)	2134 mm (84.0")
Max. load height (unladen)	593 mm (23.3")
Fuel tank capacity	68 litres (15.0 gallons)
Turning circle	12.4 m (40.6 ft.)
Cubic capacity (Vans)	2.7 m ³ (96 ft. ³)

STD means standard equipment.
 NA means not available on this model.
 NCO means no cost option.
 O/R means option at reduced cost.

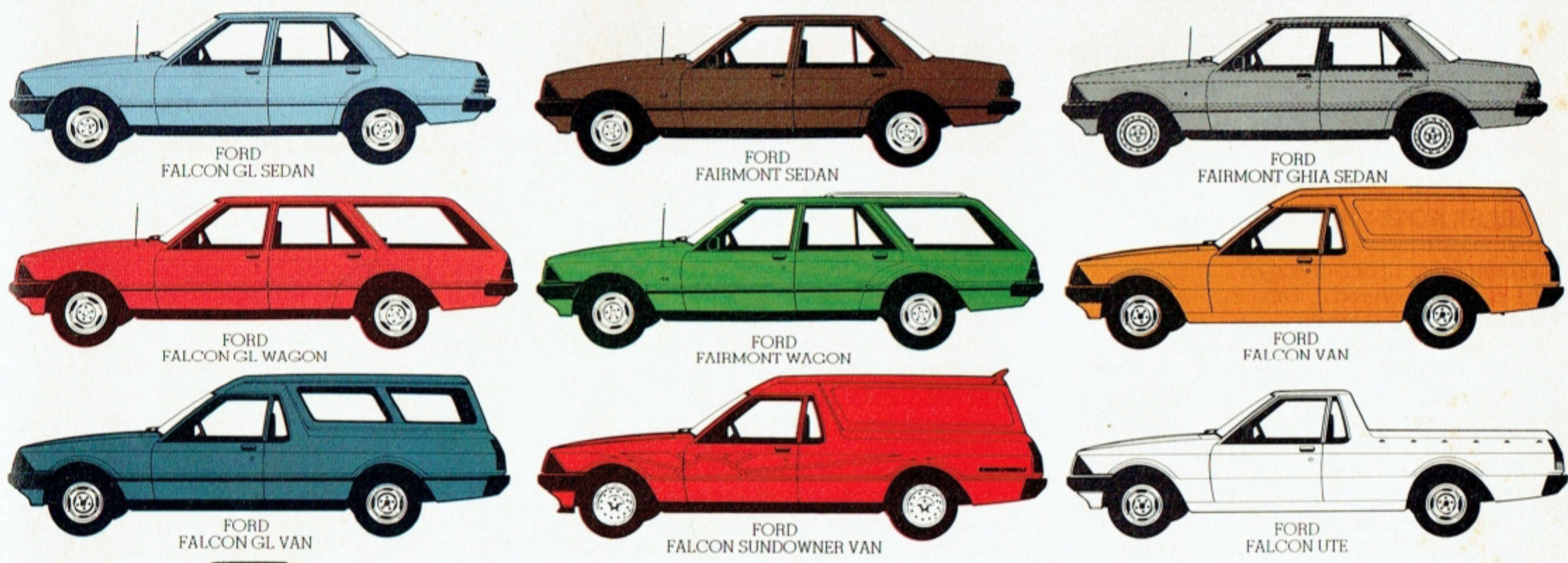
Ford Car Range



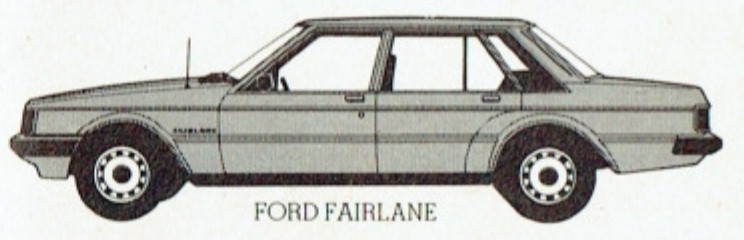
FORD ESCORT



FORD CORTINA



FORD FALCON



FORD FAIRLANE

Please note: All measurements, dimensions and capacities referred to above right are approximate only.

Always discuss your intended purchase carefully with your Ford Dealer before placing your order.

Travelling to Britain and the Continent?

If you are planning an extended stay in Europe, then consider the Visit Britain Plan. It's an economical answer

to the high cost of getting around Europe and the U.K. The scheme offers you the choice of a new Ford, Escort or Cortina for anything up to a year with a minimum charge period of six weeks. To take advantage of this special service to Ford customers, you must place a firm order with your Ford dealer in Australia for a new Ford passenger or commercial vehicle, or tractor and

take delivery of it on your return to Australia. You can also take advantage of this service if you've taken delivery of a new Ford vehicle within six months preceding the use of a Visit Britain Plan car in Europe. For full details on the Visit Britain Plan, contact your local Ford dealer, or in case of difficulty 'phone us on Melbourne 359 8061.



PLEASE NOTE: The purpose of this brochure is to provide prospective purchasers with a general description of and an introduction to the products featured in it and should be read in the light of the following:

1. Subject to the laws of Australia and/or of any applicable State or Territory thereof and/or the regulations of any competent authority which may apply from time to time, Ford Motor Company of Australia Limited and Ford Sales Company of Australia Limited each reserves the right at its discretion at any time and without prior notice to discontinue or change the models, features, specifications, designs and prices of the products referred to in this brochure and any standard, optional or available equipment therefor or any accessory for use on or in connection therewith without incurring any liability whatsoever to any purchaser or prospective purchaser of any such product, item of equipment or accessory. Because of the possibility of the discontinuance of or changes in models, features, speci-

cations, designs, standard, optional and available equipment, accessories and prices, a prospective purchaser should consult an authorised Ford Dealer for the latest information with respect to such matters and with respect to the availability of the products, optional and other equipment and accessories referred to in this brochure before deciding to place an order.

2. Some optional or other equipment items or accessories may be required to be ordered or used in combination with or without other optional or other equipment items or accessories. Unless otherwise stated optional equipment and accessories are extra cost items. Details with respect to these requirements and costs can be obtained from an Authorised Ford Dealer.

3. Because of the variations which occur in manufactured products all capacities, measurements, dimensions and weights quoted in this brochure should be taken as approximate only.

4. The availability at any particular time of any of the products, items of standard, optional or available equipment or accessories referred to in this brochure will depend upon the local and/or overseas supply situation prevailing at that time.

5. Since the delivery of any product, item of optional or other equipment or accessory can be delayed by causes beyond the reasonable control of Ford Motor Company of Australia Limited, Ford Sales Company of Australia Limited or their Dealers, a purchaser is advised, following the placing of an order, to keep in touch with the Dealer to determine the progress of the order.

6. Certain rights are conferred upon purchasers of goods by the laws of Australia and the States and Territories thereof which cannot be excluded from or be restricted, modified or limited by any contract for the sale and purchase of goods.

FORD MOTOR COMPANY OF AUSTRALIA LIMITED
FORD SALES COMPANY OF AUSTRALIA LIMITED
1735 Sydney Road, Campbellfield, Victoria, 3061.

