

# 1980 Cressida by Toyota.






Cressida 4-Door Luxury Sedan:  
Superb craftsmanship, timeless elegance.







**Cressida 5-Door Deluxe Wagon:**  
A beautiful expanse of luxury and convenience.

Cressida. One of Toyota's most luxurious, completely equipped automobiles.

Cressida combines elegance, comfort and convenience in a truly spacious automobile refined for today's more

sensible proportions.

For the discriminating buyer, Cressida adds an entirely new dimension to driving by first exciting, then satisfying, the senses.

Cressida's styling delights the eye. Its timeless

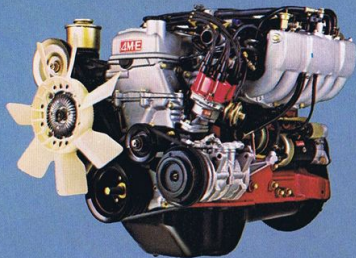
quality of design quickly establishes Cressida in a class with more expensive European luxury sedans.

Come discover the pleasant experience driving is meant to be with Cressida.



# Cressida Luxury Sedan..

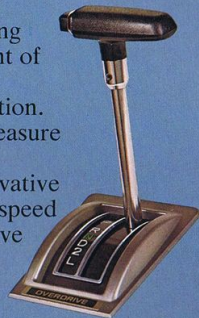
The Cressida Luxury Sedan is an automobile designed to meet and exceed the requirements of your lifestyle. Its tasteful styling and elegant appointments announce your arrival wherever you go.



The secret of Cressida's performance—a 2.6 liter, 6-cylinder electronically fuel injected engine—lies below its handsome exterior. This powerful engine delivers performance that turns driving

from mundane to magnificent. Yet Cressida's electronic fuel injection helps conserve fuel\* by accurately metering the precise amount of fuel necessary for each driving situation.

Your driving pleasure will be increased by Cressida's innovative smooth shifting 4-speed automatic overdrive transmission. At speeds above 35 mph, Cressida automatically shifts into overdrive, helping increase fuel economy\* and lessening engine



wear by reducing engine revolutions at cruising speeds. With the touch of a finger, you can disengage the overdrive at any time.

Of course, the Cressida Luxury Sedan comes equipped with power steering as a built-in feature, not added on, for nearly effortless steering. Cressida's Electro Sensor





# The Executive Toyota.

Panel keeps watch on systems you cannot normally see. This electronic display continuously monitors two important operating areas, brake lights and taillights. The warning light will alert you when either of these systems needs attention.





# Inside...a showcase of luxury

Cressida's creature comforts are a true delight. Luxuriate in Cressida's plush seats, as you inventory the array of conveniences at your fingertips.

Cressida's crushed moquette seats are pleasing to the eye and are supremely comfortable. With Cressida, the automobile adjusts to you—you are not forced to adjust to it.

The tilt steering wheel allows a choice of driving positions. The driver's seat adjusts six different ways and also contains an adjustable lower back support. The Luxury Sedan's front bucket



seats are fully reclinable for the comfort of driver and passenger. A fold-down armrest is included for the comfort of rear seat passengers.

Cressida's Cruise Control helps maximize fuel economy\* by maintaining steady throttle speeds on hilly or level roads. When you reach the desired speed, push the switch to "set" to maintain that speed.



A light touch of the brake pedal disengages the Cruise Control. To resume your original speed, just push the switch to "resume."

Cressida Luxury Sedan includes



automatic temperature control air conditioning. Simply set the desired temperature and Cressida's air conditioning system will maintain it from the heat of the day through the cool of night.

Cressida's rear seat passengers will also remain comfortable with ample cool or warm air reaching them from Cressida's strategically placed vents.

A master panel located on the driver's armrest contains controls for all the power windows and power door locks. Column-mounted controls





# comfort and craftsmanship.

for headlights/turn signals and wiper/washer are easily reached without diverting driver attention.



Your driving pleasure will be further enhanced by the vast array of convenience features Cressida provides. For example, at the push of a button, Cressida's digital quartz clock displays a readout of month and day in place of hour and minutes.

Cressida's AM/FM/MPX stereo radio surrounds you with rich, high fidelity sound as you drive. As a convenience, the power antenna can be adjusted from inside.





# Cressida 5-Door Deluxe Wagon: A beautiful

The Cressida 5-Door Deluxe Wagon.

Luxurious.

Roomy. And perfectly suited for a weekend in the country or an evening on the town. This indeed is no ordinary station wagon.

The Cressida 5-Door Deluxe Wagon catches the eye with its handsomely stylized exterior.

The interior offers an abundance of luxury, comfort and convenience features. Its spacious cargo area is fully carpeted to cushion and help protect whatever you're carrying. If additional



room is needed, simply fold down the rear seat and you will have over 65 cubic feet of space—plenty of room for vacation luggage...or a treasure from the antique shop.

The instrument panel of the

Cressida 5-Door Deluxe Wagon is a study in functional beauty. Tachometer, speedometer, fuel and temperature gauges are positioned to be read at a glance. The steering wheel tilts. Cruise Control with set/resume switch increases comfort by reducing driving effort.



The AM/FM/MPX stereo radio fills Cressida with soothing sound





# expanse of luxury and convenience.

as you drive.

Inside, the Cressida 5-Door Deluxe Wagon mirrors the luxury and craftsmanship

Toyota builds into every automobile. Striped knit fabric seats add beauty and comfort. The driver's seat has multiple adjustments, including a lower back support.

The Cressida Wagon provides similar luxurious surroundings and comfort for rear seat passengers.

Cressida's 5-Door Deluxe Wagon. Think of it as a luxury sedan with room for the good things in life.





# Cressida Features

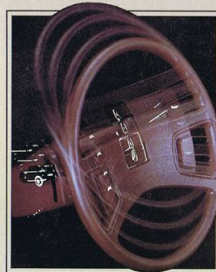
# Standard

S—Standard —Not Available O—Optional	4-Door Luxury Sedan	5-Door Deluxe Wagon
2.6 liter SOHC electronically fuel-injected 6-cylinder engine	S	S
4-speed automatic overdrive transmission	S	S
Cruise control	S	S
Power steering	S	S
Tilt steering wheel	S	S
AM/FM/MPX 3-speaker stereo radio	S	S
Automatic temperature control air conditioning	S	—
Air conditioning	—	S
Striped knit fabric upholstery	—	S
Crushed moquette fabric upholstery	S	—
Wall-to-wall carpeting	S	S
Carpeted trunk/cargo area	S	S
6-way adjustable driver's seat	S	S
Adjustable lumbar support (driver's seat)	S	S
Fold-down rear seat armrest	S	—
Power-assisted front disc, rear drum brakes	S	S
Fully transistorized ignition system	S	S
Tachometer	S	S
Tinted glass	S	S
Steel-belted white sidewall radial ply tires	S	S
Simulated woodgrain siding	—	S
Luggage rack	—	O
Resettable tripmeter	S	S
MacPherson strut front suspension	S	S
Rear window wiper/washer	—	S
Steering wheel w/simulated woodgrain insert	—	S
4-spoke steering wheel	S	—
Passenger assist grips	S	S
Multi-position door openings	S	S
Full console with storage area and armrest	S	S
Locking glove box	S	S
Child protector rear door locks	S	S
Power door locks	S	—
Power windows	S	—
8-track stereo tape deck or stereo cassette player	O	O
Dual outside mirrors	S	S
Remote control lefthand rear view mirror	S	S
Day/night inside rear view mirror	S	S
Column-mounted windshield wiper control with intermittent and washer-linked wiping cycles	S	S
Luxury wheel covers	S	—
Deluxe wheel covers	—	S
Remote control trunk release	S	—
Locking fuel filler door with inside remote release	S	S
Front seat back and door pockets	S	S
Wide body side moldings	S	S
Door edge guards	O	O
Power-assisted Flo-thru ventilation	S	S
Reclining front bucket seats	S	S
Visor vanity mirror	S	S
Electro sensor panel	S	S
Lamps-on warning system	S	S
Digital quartz clock with time and date	S	S
Low maintenance battery	S	S
Electric rear window defogger	S	S
Illuminated entry system	S	S
Adjustable front head restraints	S	S
Heater/defroster with 4-speed fan	S	S
Power antenna	S	—

Cressida's 2.6 liter SOHC 6-cylinder engine is equipped with electronic fuel injection and a fully transistorized ignition system. Electronic fuel injection maintains accurate fuel metering for optimum economy\* and performance. Transistorized ignition (shown at right) provides fast, sure starts and eliminates replacement parts such as points and condenser.



Cressida is equipped with a smooth shifting, 4-speed automatic overdrive transmission for your driving pleasure. The overdrive mode engages automatically at speeds above 35 mph to improve overall operating economy and decrease engine wear. Overdrive can be disengaged at any time with the release button on the instrument panel.



Cruise Control with set/resume switch is another Cressida convenience which

helps maximize fuel economy\* by maintaining a steady throttle speed on hilly or level roads.

Cressida's power steering provides additional driving and parking ease. The tilt steering wheel in all Cressidas allows a choice of driving positions. An AM/FM/MPX stereo radio with advanced micro-electronic circuitry surrounds you with pleasurable sound.



Cressida Luxury Sedan is equipped with automatic temperature control air conditioning to maintain your desired temperature through the heat of day and cool of night.

Adding to the remarkable handling of every Cressida Luxury Sedan and 5-Door Deluxe Wagon are MacPherson strut front suspension (shown at right) and power-assisted front disc and rear drum brakes.

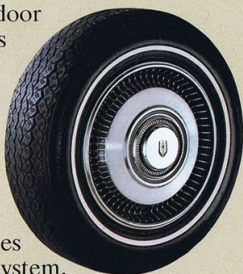




# Features

Power windows and power door locks are convenience features of the Luxury Sedan.

Steel-belted white sidewall radial ply tires and stylish wheel covers give Cressida a look of elegance. Wide body side moldings furnish exterior body protection.



Each Cressida model includes an illuminated entry system.

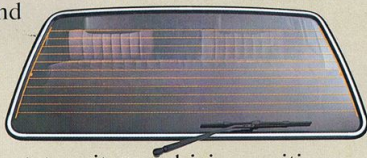
The dome lamp remains lit for a short time after the doors are closed for you to get settled and start the engine.

The driver's rear view mirror can be adjusted from inside using the remote control lever (left).

Dual outside and day/night inside rear view mirrors are standard on all Cressida

models for all-around visibility.

The driver's seat in all Cressidas adjusts six different ways, plus a lumbar support, to suit your driving position.



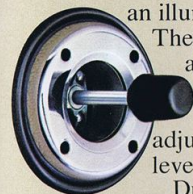
The Cressida Luxury Sedan and 5-Door Deluxe Wagon both feature tinted glass, rear window defogger and carpeted trunk or cargo area. Rear window wiper/washer (above) is standard on the Cressida Deluxe Wagon.

For those interested in instrumentation, a tachometer (shown at left), resettable tripmeter, temperature and fuel gauges are

standard on both the Cressida Luxury Sedan and Cressida 5-Door Deluxe Wagon.

For your protection the fuel filler door (shown at right) is controlled by a key or an inside

remote control lever (far left). There is also an inside hood release lever (shown at left).



# Specifications

<b>BODY/FRAME CONSTRUCTION</b>	Unitized body construction.
<b>SUSPENSION FRONT</b>	MacPherson strut, coil springs, and stabilizer.
<b>SUSPENSION REAR</b>	4-link with coil springs, double-acting shock absorbers and lateral track bar (leaf springs on wagons).
<b>STEERING TYPE</b>	Power-assisted recirculating ball, collapsible shaft.
<b>BRAKES FRONT/REAR</b>	Power-assisted front disc, rear drum.
<b>ENGINE TYPE</b>	6-cylinder single overhead cam EFI.
<b>DISPLACEMENT</b>	2.6 liters (2563 cc).
<b>HORSEPOWER (SAE NET)</b>	110 hp@4800 rpm.
<b>TORQUE (SAE NET)</b>	136 ft. lbs.@2400 rpm.

	<b>EXTERIOR DIMENSIONS (inches)</b>	
	<b>4-DR LUX. SEDAN</b>	<b>5-DR DLX. WAGON</b>
Wheelbase	104.1	104.1
Overall Length	185.0	184.4
Overall Width	66.1	66.1
Overall Height	54.3	54.7
Tread Width/Front	54.7	54.7
Tread Width/Rear	53.7	53.7
<b>CURB WEIGHT (lbs.)</b>	2,838	2,893

	<b>INTERIOR DIMENSIONS (inches)</b>	
	Front	Rear
Head Room	37.8	37.2
Leg Room	40.0	31.5
Shoulder Room	52.6	52.8
	52.2	53.3

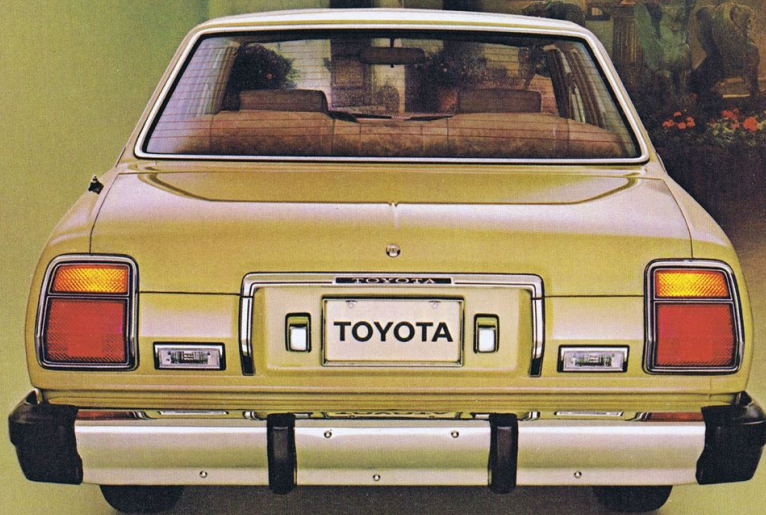
<b>CAPACITIES</b>		(rear seat down)
Trunk or Cargo Area (cu. ft.)	11.9	65.6
Fuel Tank (gallons)	17.2	16.2

<b>TIRES</b>		
Type	Steel-Belted Radial Ply	Steel-Belted Radial Ply
Size	185/70 SR14	185/70 SR14

\*EPA STATEMENT: EPA mileage figures not available at time of printing. Consult your Toyota dealer.

\*Remember: Compare this estimate to the EPA "Estimated MPG" of other cars. You may get different mileage depending on how fast you drive, weather conditions and trip length. Specifications and equipment are based on the available information at time of printing and are subject to change without notice. Some vehicles are shown with optional equipment. See Features chart for details. For information on additional options and accessories, contact your Toyota dealer.





OH  
WHAT  
A  
FEELING

**TOYOTA**

©1979 Toyota Motor Sales, U.S.A., Inc.

P/004 (10/79)  
00600-01155  
Litho in U.S.A.  
(150 M)



SELECTED BY  
THE U.S. OLYMPIC  
COMMITTEE