



FORD LTD CARTIER



Ford Australia - We're moving with you.

FORD LTD CARTIER. A VERY DISTINGUISHED MOTOR CAR.

From their beginnings in 1847 to global prominence today, Cartier designs have become legendary in the world of luxury and good taste. In all Cartier history, the name has been used only twice to distinguish a motor car. First, in the United States for the prestigious Ford Lincoln Continental Designer Series. And then, in Australia for the Ford LTD Cartier. The comfort, luxury and engineering refinement of the Ford LTD has been combined with distinctive styling in the Cartier tradition to produce Ford Australia's finest motor car.

The colour scheme of the LTD Cartier stands apart. A classic metallic champagne finish with burgundy bodyside, hood and decklid pinstriping. Alloy road wheels are accented in champagne. The Cartier motif is discreetly displayed on the rear bodyside and there are LTD and Cartier symbols on the glass of the rear quarter windows and a Cartier decal on the rear decklid.

Ford LTD Cartier is contemporary in its exterior size, yet spacious in its interior dimensions. Elegant and luxurious. Styled and appointed to impress.

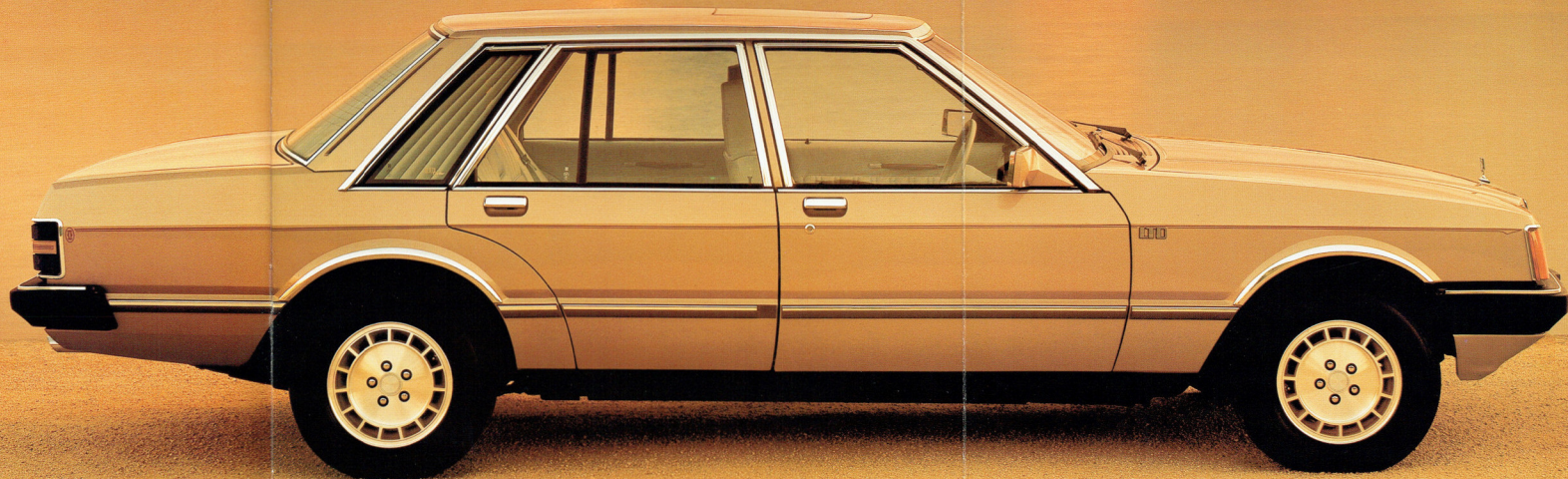
And just as importantly, a motor car with the riding comfort, quietness, performance and handling characteristics demanded by the discerning. Ford LTD Cartier is a pleasure to drive...with an ease of manoeuvrability that will pleasantly surprise.

The LTD Cartier is photographed with Lake Burley Griffin, and the National Library of Australia in the background, Canberra ACT.

Illustrated Front Cover:
The LTD Cartier is photographed in front of the High Court of Australia Building, Canberra ACT.

Always consult your authorized Ford Dealer for the latest information on models, specifications, features, prices, options and availability before deciding to place an order.

Printed April 1983





FORD LTD VERY AUTHORITATIVE BEHIND THE WHEEL.

Here is a motor car which will look distinctive in any company... a motor car which is compatible with today's driving... and above all, a motor car which, when you compare it on a feature and price basis, sets its own standard of value among all luxury cars.

Ford LTD incorporates a number of significant engineering features in the areas of performance, ride and handling.

The 4.1 litre Alloy Head 6 cylinder engine provides a desirable balance of performance and economy.

A 5.8 litre V8 engine is available as an extra cost option, should greater performance or towing power be required.

3-speed T-bar automatic transmission moves the LTD away smoothly, shifting for itself or giving the driver the choice of moving manually through the gears.

A responsive variable-ratio power steering system with positive road feel, limited slip differential, and power disc brakes at all four wheels assist driver confidence.

Tyres are premium grade Michelin XVS for comfort, durability and excellent road-holding characteristics. Road adhesion is enhanced by a wide track, long wheelbase and stabilised front and rear suspensions.

While these features add up to Ford LTD's comfort, ride and handling characteristics, you will also be impressed with the car's security.

Protection is provided for driver and passengers by deep section, high strength steel beams in the side, and computer designed front and rear crumple zones.

Visibility is also significant. The large glass area and command driving position allow the driver an excellent view of the road ahead. Powerful quartz halogen headlights are provided.

The LTD is photographed at the Australian Academy of Science Building, Canberra ACT.

Always consult your authorized Ford Dealer for the latest information on models, specifications, features, prices, options and availability before deciding to place an order.

Printed April 1981



QUIET, SPACIOUS, LUXURIOUS.

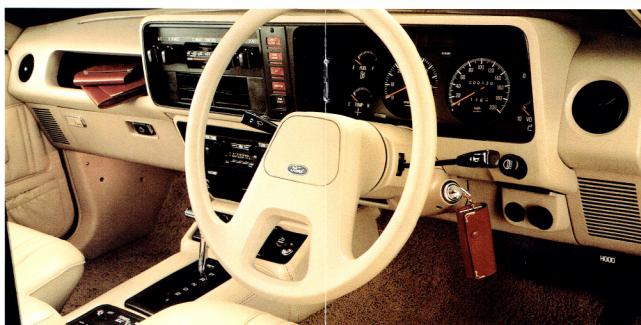
The interior colour scheme of the LTD Cartier is exclusive. Genuine Australian Leather seat facings in champagne, are complemented by burgundy accents on the seats and door pull straps.

The centre console glove box is lined with burgundy leather. Luxury carpet is in co-ordinated champagne. In the passenger and luggage compartments. The rear parcel shelf also has a carpet covering.

Every new LTD Cartier is supplied with a Cartier lady's leather purse, leather travel wallet, and leather key case.

You may also order your LTD Cartier to be trimmed with a luxurious 'crushed velour' champagne cloth fabric which is optional at no extra cost. Burgundy accents, however, are not included on the seat facings and door pull straps are in body colour finish.

Personal comfort and luxury is provided in many forms. For example, rear seat passengers are afforded the comfort of fixed louvred shades on the rear quarter-windows. Tinted



glass is standard in the side and rear windows to help reduce solar heat penetration. LTD Cartier also incorporates a number of power controlled fittings.

The Moon Roof with its power operated tinted glass panel provides a delightful way to enjoy open air or sunshine. Below the glass panel, a manually operated in-built sunshade, covered with matching headlining, closes off the roof when desired. The inclusion of the Moon Roof results in a reduction of front and rear head room of approximately 4 cm and you may choose to have this standard feature deleted at reduced cost when placing your order.

Aerodynamic styling, which significantly reduces wind noise, and extensive sound proofing help make LTD Cartier one of the quietest cars.



Always consult your authorized Ford Dealer for the latest information on models, specifications, features, prices, options and availability before deciding to place an order.

Printed April 1981

YOU ARE IN CONTROL with Ford LTD.

Ford LTD offers functional values that add to your comfort and control. Inside LTD "crushed velour" cloth fabric seating is standard. Alternatively you may order Genuine Australian Leather seat facings at no extra cost.

Seat design is contoured for relaxed driving and correct posture. The front and two rear head restraints incorporate plush pad inserts. The spacious interior means ample room in the front, and even more leg-room for the rear passengers than the commodious Mercedes 430 SEL.

A soft feel "twin spoke steering wheel is designed for correct hand placement and clear viewing of the instruments and controls. The instrument panel itself, with its ergonomic design, is highly functional and comprehensive.

An array of lights are there to signal: Hi-beam, low fuel, parking brake 'on', rear demister operation, headlights or parking lights left 'on', brake system warning and alternator warning.

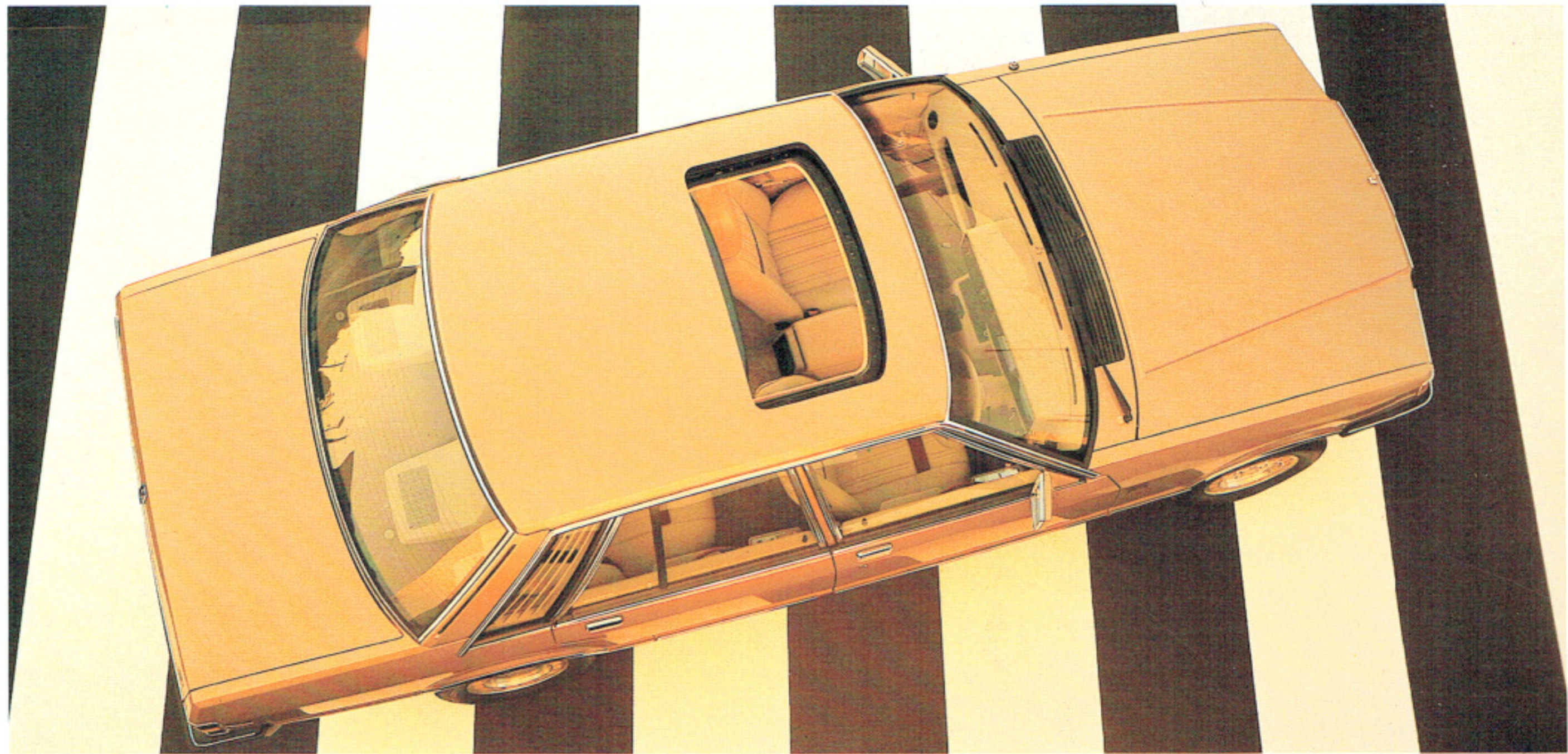


Other features which are standard on the LTD Cartier and LTD include: an AM/FM push button radio/stereo cassette player with a 4 speaker system and power aerial. *Moon Roof with power operated sliding glass panel and manually operated in-built sunshade (may be deleted at reduced cost) - Air conditioned climate control system for cooling and heating with outlets to the front and rear compartments - Six way power operated front seats for legroom adjustment and the control of height and tilt, with the controls conveniently located on the centre console - Power operated windows (with master control and central door locking system) - Digital clock - Overhead outboard passenger grab handles front and rear - Colour co-ordinated carpet on passenger and luggage compartment floors, the lower area of the doors and on the rear parcel shelf - Courtesy lights operated by all doors - Twin spot dome lamp - Reading lamps set into the rear pillars - Courtesy lights in the glove box and luggage compartment - 4 way hazard flashers - Child-proof settings on rear door locks - Nap pockets in the rear of the front seats - Windscreen wipers with intermittent setting - Cigarette lighters in rear door armrests and finally a large 0.46 cubic metres (16.1 cubic feet) luggage compartment.

*With Moon Roof installed, front and rear headroom is reduced by approximately 4 cm.

Printed April 1981





Ford LTD's standard 4.1 litre high compression Alloy Head engine reaches effective operating temperatures quickly, which together with efficient combustion chamber design contributes to favourable fuel economy and performance. Electronic ignition also gives a potent spark and helps maintain engine tune over long periods.

A 5.8 litre V8 engine is available as an extra cost option.

★ Tested by Ford Engineers

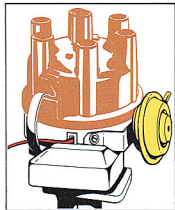
under the Australian Standard 2077-1979 test procedures, a Ford LTD with 4.1 litre Alloy Head engine used 15 litres per 100km City Cycle (18.8 mpg) and 10.5 litres per 100km Highway Cycle (26.9 mpg).

The actual fuel consumption you will get will depend however upon such factors as your driving habits, driving conditions and how your car is equipped and tuned. Ask your Ford Dealer to show you the Federal Government booklet which lists comparative fuel

consumption test figures for many popular cars. We believe that when you check LTD's figures with its competitors, you'll find LTD compares very favourably.

Other Ford LTD engineering refinements include: -Dual line brake system: The four wheel ventilated disc brake system has separate lines to front and rear brakes, as a safety feature. There is also a wheel pressure limiting valve, and a large 11 inch booster.

-Energy-absorbing bumpers: The lightweight tough energy-absorbing bumpers are designed to help reduce minor parking and impact damage. -Coolant recovery system: A separate tank traps overflow which is then returned to the radiator under normal operating conditions. -Viscous-clutch engine cooling fan: The Viscous-clutch fitted to the fan, only fully engages when increased cooling performance is required.



CITY CYCLE
15.0L/100km
18.8 mpg

HIGHWAY CYCLE
10.5L/100km
26.9 mpg

FORD LTD OPTIONS AND SPECIFICATIONS

(Options are at extra cost unless otherwise stated)

CONVENIENCE AND APPEARANCE EQUIPMENT:	LTD CARTIER	
---------------------------------------	-------------	--

Cloth seats - crushed velour	STD	NCO
Leather seat facings	NCO	STD
Metallic paint	(a)	NCO STD
Moon Roof	STD	STD

NOTE: Moon Roof can be deleted at reduced cost.

HEAVY DUTY EQUIPMENT:		
-----------------------	--	--

Outback pack	(b)	OPT OPT
Class I Towing Pack	(c)(f)(g)	OPT OPT
Heavy Duty Pack for Towing	(d)(f)(g)	OPT OPT
Class II Towing Pack	(e)(f)(g)	OPT OPT

ENGINE AND TRANSMISSION COMBINATIONS:

4.1 litre Alloy Head 6 cylinder crossflow engine coupled with 3-speed T-bar automatic transmission	STD	STD
5.8 litre V8 engine coupled with 3-speed T-bar automatic transmission	OPT	OPT

Tyre AVAILABILITY:

205 70 HR 14 Michelin XVS steel belt radial ply tyres	STD	STD
---	-----	-----

NOTE: NCO means no cost option OPT means optional at extra cost STD means standard equipment

DIMENSIONS:	FORD LTD/CARTIER	
Overall length	5010 mm (197.2')	
Overall width	1868 mm (73.5')	
Overall height	1394 mm (54.9')	
Wheelbase	2946 mm (116.0')	
Track...Front	1552 mm (61.1')	
...Rear	1527 mm (60.1')	
Usable fuel tank capacity	80.0 litres (17.6 gals)	
Boot capacity	0.46 m ³ (16.1 ft ³)	
Turning circle	12.7 m (41.9 ft)	

ENGINE SPECIFICATIONS:	4.1 litre Alloy Head 6 cylinder	
Engine displacement (cc)	4092	
Bore (mm)	93.5	
Stroke (mm)	99.3	
Compression Ratio (to 1)	9.35	

FOOTNOTES TO CHART:

- Consult the Ford Colour Selector or your authorized Ford Dealer to determine which colours are available in metallic paint.
- Outback Pack consists of heavy duty rear axle, heavy duty air cleaner with 6 cylinder engine, engine sump guard, rear axle shock absorber protection plate and heavy duty suspension. Heavy duty suspension consists of larger diameter heavy duty shock absorbers and springs, increased ride height, increased diameter rear stabilizer bar.
- The Class I Towing Pack is designed to provide towing capability for loads with a gross weight of up to 307 kg (682 lbs). See Note (a) below in conjunction with a suitable caravan or trailer braking system. The Pack consists of the following:
 - Working harness with 7 pin electrical connection. Note: The caravan or trailer braking system and any other items such as tow ball and safety chains required for the attachment of a trailer, caravan or other equipment to the vehicle are not supplied as part of the Pack and must be purchased at extra cost or be supplied by the owner.
- The Heavy Duty Pack for Towing is a base option offered for the convenience of a purchaser who already owns a complete tow bar and who wishes to have that tow bar transferred to the new vehicle. Although the purchaser's own tow bar may be suitable for use with the Heavy Duty Pack for Towing it may need to be adjusted or modified. The transfer of the purchaser's tow bar to the new vehicle and any required adjustments or modifications will be at additional cost to the purchaser. This Pack is designed to upgrade the base vehicle specifications to enable the towing of loads with a gross weight of up to 1817 kg (4000 lbs). See Note (a) below in conjunction with a suitable tow bar, hitch tow ball, caravan or trailer braking system and a Ford approved Spring Bar Kit. The Pack consists of:
 - Automatic transmission oil cooler
 - Heavy duty suspension which consists of heavy duty shock absorbers and springs, increased ride height and increased diameter rear stabilizer bar
 - Working harness with 7 pin electrical connection
 - Note: The tow bar, hitch tow ball, caravan or trailer braking system and spring bar kit and other items (such as safety chains) required for the attachment of a trailer, caravan or other equipment to the vehicle are not supplied as part of the Pack and must be purchased at extra cost or be supplied by the owner. For the required engine transmission and tyre specifications see Note (a) below.
- The Class II Towing Pack upgrades the base vehicle specifications to the same level of towing capability as the Heavy Duty Pack for Towing. Note (a) above and provides towing capacity for loads with a gross weight of up to 1817 kg (4000 lbs). See Note (a) below in conjunction with a suitable tow bar, caravan or trailer braking system and a Ford approved Spring Bar Kit. The Pack consists of those items which are supplied in the Heavy Duty Pack for Towing and the following additional items:
 - Body internal reinforcements • Load distributing hitch • Heavy duty towing hitch • Chrome plated hitch cover plate
 - Note: The tow ball, caravan or trailer braking system and the Spring Bar Kit and any other items (such as safety chains) required for the attachment of a trailer, caravan or other equipment to the vehicle are not supplied as part of the Pack and must be purchased at extra cost or be supplied by the owner.
- The Class I Towing Pack, the Heavy Duty Pack for Towing and the Class II Towing Pack are designed to be incorporated in the vehicle during the assembly of the vehicle. When the Heavy Duty Pack for Towing or the Class II Towing Pack is ordered a 5.8 litre V8 engine with the mandatory engine must also be ordered at extra cost as part of the vehicle's specifications.
- The actual towing capability and performance of a vehicle will depend upon the condition of the vehicle, the vehicle load, road gradient and other terrain conditions.

PLEASE NOTE:

Ford Motor Company of Australia Limited and/or Ford Sales Company of Australia Limited reserves the right, subject to the laws of Australia and/or any applicable State or Territory thereof and/or the regulations of any competent authority which may apply from time to time, at their or its discretion, and without notice, to discontinue or change the specifications, design and prices of the products referred to in this catalogue or to alter permanently or temporarily withdraw any such items from the market at any time without incurring any liability whatsoever to any prospective purchaser or purchaser thereof.

The availability of some of the products referred to in this catalogue may from time to time be affected by overseas or local supply conditions, often prevailing. Due to variations which can occur in manufactured products, all measurements, dimensions, capacities and weights referred to above are approximate only. Always consult your authorized Ford Dealer for the latest information on models, specifications, features, prices, options and availability before deciding to place an order. Your Ford Dealer should also be consulted on the correct use and operation of fitted options.

FORD MOTOR COMPANY OF AUSTRALIA LTD.
FORD SALES COMPANY OF AUSTRALIA LTD.
1735 Sydney Road, Campbellfield, Victoria.

Illustrated Back Cover: The LTD is photographed in front of the TAB Building, Canberra, ACT.