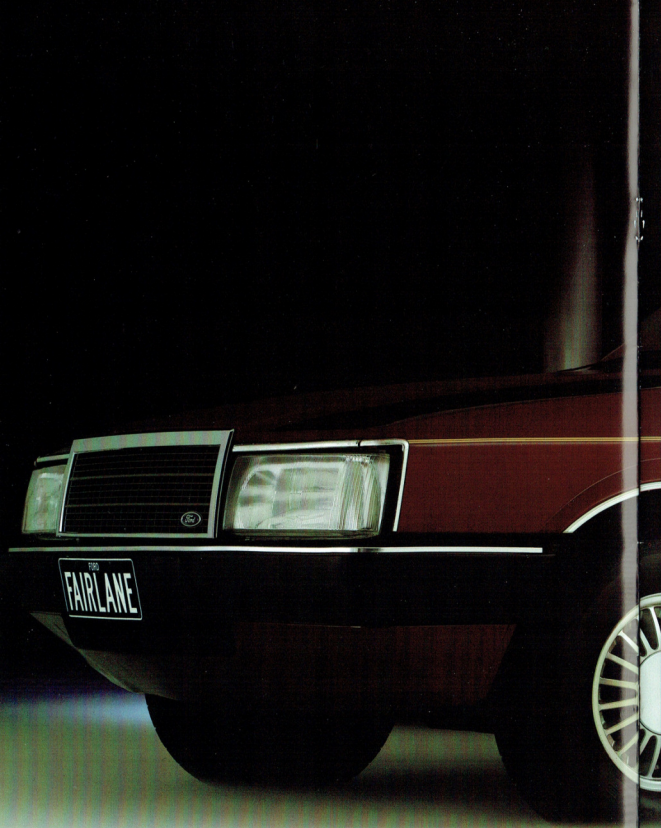


FORD FAIRLANE  
*If you don't deserve it, who does?*









The new Fairlane is truly Australia's prestige Town and Country car.

Its reputation for comfort, space and ride is already well known.

To these features even greater comfort has been added, plus new technology to make Fairlane even more rewarding to drive and to own.





The interior of the new Fairlane has been redesigned to provide you with even greater comfort, control, driving ease and driving pleasure.

The cloth covered seats are big and comfortable. Driver's seat back features a lumbar support adjustment for added comfort on Australia's country roads. The steering wheel is height adjustable and can be set to suit your preferred driving position. There's even a driver's foot rest to help you relax. And the re-designed door panels have more conveniently located electric window and door locking controls.

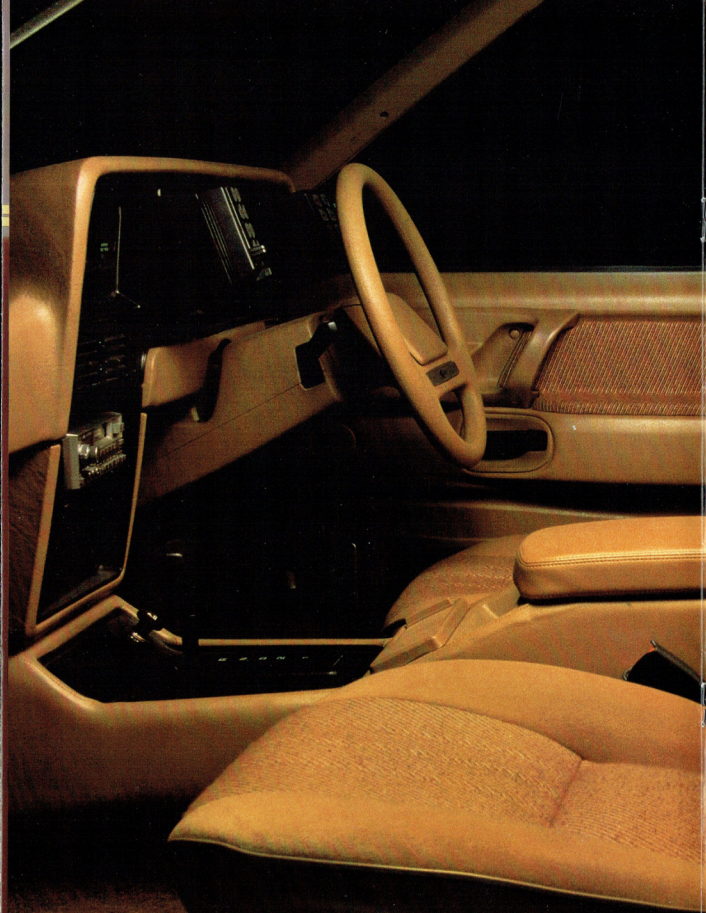
Exterior mirrors are electrically controlled as is the boot and fuel filler cover release.

The airconditioner has motorised front centre air-vents to assist air circulation. Rear seat passengers will enjoy the comfort of separate cool air ducting while appreciating the generous space which provides plenty of room for the long legged and broad shouldered.

The rear seat backrest has a 'double-fold' centre section. It folds down to form an armrest. It folds forward again to form a wide, convenient tray and at the same time provides access to the boot.

New Ford Fairlane—equipped with all you've come to expect in Australia's leading prestige car.





*D*espite its obvious luxury and comfort, the new Fairlane is very much a driver's car.

The instrumentation and controls are designed to give the driver easy visibility and access without the need to lean and stretch.

Switches for such things as the airconditioner, heater, lights and the new cruise control can all be worked without actually taking your hands away from the wheel.

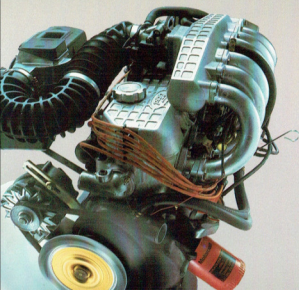
The cruise control helps to reduce the fatigue associated with long distance driving, and also avoids the natural tendency, on long trips, for gradually increasing speeds without realising it.

Digital displays keep you informed about the car's speed, revs, fuel and oil.

Additional information is provided on lights, rear demist, alternator and other vehicle functions.

If you choose the optional trip computer, you can monitor even more functions. It tells you how much fuel you've used, distance travelled, average speed and fuel consumption and kilometres to empty. Helpful information you look for on long trips.



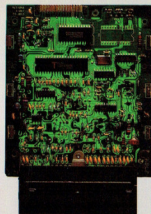


The optional EFI engine is very popular with Fairlane owners. This powerful 4.1 litre 6 cylinder engine that feels like a V8 yet is remarkably fuel efficient—because the electronic fuel injection system provides the precise fuel/air mixture to the combustion chamber.

Now, when you choose EFI, you also get EEC-4—an on-board computer which further improves the engine's performance and fuel economy because it also controls the spark timing.

It's an improvement you will really feel and appreciate.

Put your foot down and you can feel the power, feel the response.



The car does what you want it to do. Even with the right combination of fuel and air going into the combustion chamber, if the spark timing is too early or too late, the result will be less than ideal performance.

A major feature of the EEC-4 computer is that it also controls spark timing to improve engine combustion and therefore engine performance.

With more precise spark timing and fuel injection as a result of the EEC-4 computer control, more power yet improved fuel economy is achieved.

New Ford Fairlane. If you don't deserve it, who does?

The Fairlane vehicle depicted in this brochure is fitted with optional EFI Engine and alloy wheels.



FORD FAIRLANE  
*If you don't deserve it, who does?*

About this brochure. This brochure is designed to provide you with a general introduction to the Ford Products (including available optional equipment) referred to, and should be read in conjunction with the latest specification sheets. Because of changes in conditions and circumstances Ford\* reserves the right, subject to all applicable laws, at any time, at their discretion, and without notice to discontinue or change the features, designs, materials, colours and other specifications and the prices of their products, and to either permanently or temporarily withdraw any such products from the market without incurring any liability to any prospective purchaser or purchaser.

The latest specification sheet should be referred to for information on the availability, ordering and use of optional equipment. Always consult an Authorised Ford Dealer for the latest information with respect to features, specifications, prices, optional equipment and availability before deciding to place an order.

\*FORD MOTOR COMPANY OF AUSTRALIA LIMITED  
(Incorporated in Victoria)

Registered offices: 1735 Sydney Road, Campbellfield,  
Victoria, 3061.

FORD SALES COMPANY OF AUSTRALIA LIMITED  
(Incorporated in Victoria)

Registered offices: 1735 Sydney Road, Campbellfield,  
Victoria, 3061.


Printed October 1984

 **Ford Australia - We're moving with you.**

FORD FAIRLANE







About this brochure. This brochure is designed to provide you with a general introduction to the Ford Products (including available optional equipment) referred to, and should be read in conjunction with the latest specification sheets. Because of changes in conditions and circumstances Ford\* reserves the right, subject to all applicable laws, at any time, at their discretion, and without notice to discontinue or change the features, designs, materials, colours and other specifications and the prices of their products, and to either permanently or temporarily withdraw any such products from the market without incurring any liability to any prospective purchaser or purchaser.

The latest specification sheet should be referred to for information on the availability, ordering and use of optional equipment. Always consult an Authorised Ford Dealer for the latest information with respect to features, specifications, prices, optional equipment and availability before deciding to place an order.

\*FORD MOTOR COMPANY OF AUSTRALIA LIMITED  
(Incorporated in Victoria)  
Registered offices: 1735 Sydney Road, Campbellfield,  
Victoria, 3061.  
FORD SALES COMPANY OF AUSTRALIA LIMITED  
(Incorporated in Victoria)  
Registered offices: 1735 Sydney Road, Campbellfield,  
Victoria, 3061.

Printed October 1984



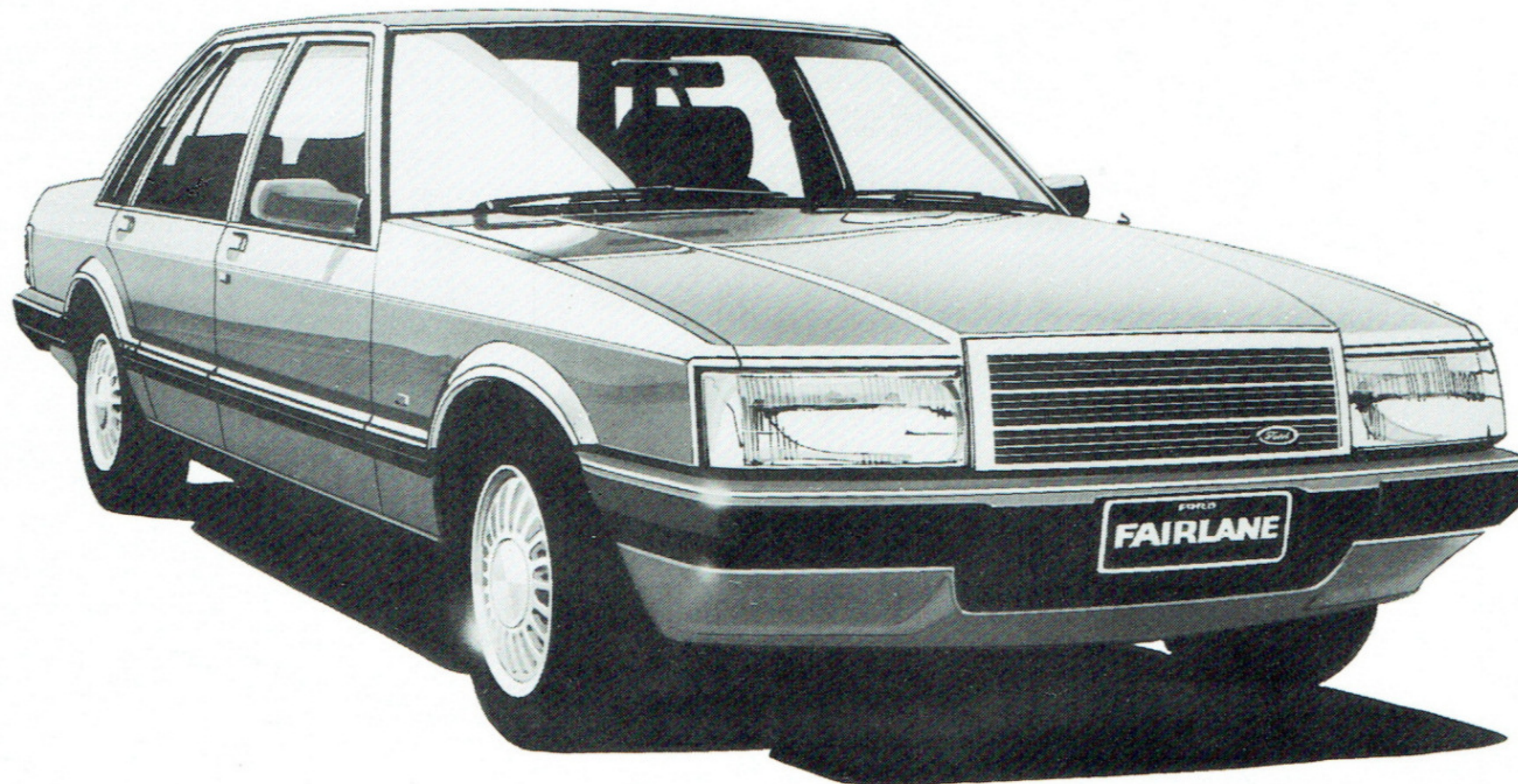
**Ford Australia - We're moving with you.**

FORD FAIRLANE





# Ford Fairlane



Fairlane illustrated with optional Alloy Wheels.

## Ford Fairlane Standard Equipment Highlights

- 4.1 litre Alloy Head II 6 cylinder engine
- Electronic ignition
- Watts Link rear suspension
- 3-speed T-bar automatic transmission
- Steel wheels: 14" x 6" JJ
- Styled full wheel covers
- Steel belt radial ply tyres: ER70 H14
- Wide section quartz halogen headlamps with integrated driving lamps and high intensity turn indicator lamps
- 4-wheel disc brakes
- Limited slip differential
- Power assisted steering
- Adjustable steering column
- Cruise control
- Pod mounted push button switches
- Comprehensive electronic instrumentation with high visibility vacuum fluorescent type displays
- Power operated door locks and windows
- Air conditioning
- Motorised oscillating ventilation outlet
- Rear passenger compartment air conditioning/ventilation outlets
- Audio system: AM/FM stereo radio/cassette player (4 speakers) with many features including electronic touch tuning, digital frequency readout, station search, tape music search and Dolby noise reduction
- Foldaway power operated left and right hand side exterior rear view mirrors
- Diagonal Tweed/"Velvet" Knit seat facings
- Reclining front bucket seats
- Adjustable lumbar support and seat tilt for the driver
- Adjustable front and rear head restraints
- Fold down centre rear seat section with armrest
- Centre console with storage bin
- Prismatic day/night adjustable interior rear view mirror
- Passenger vanity mirror with cover
- Moulded door trims with Diagonal Tweed armrest insert
- Plush carpet on passenger compartment floor
- Remote boot release with security switch
- Remote fuel lid release
- Child proof rear door lock setting
- Comprehensive interior courtesy lighting, including an illuminated entry system operating from both front door handles
- Cigar lighters, front and two rear
- Driver's footrest
- Tinted band laminated windscreen
- Tinted side and rear glass
- Heated rear window
- 4-speed fan boosted ventilation/heating
- Power operated antenna
- Warning light array
- Systems check panel
- Hazard flashers
- Wide bodyside protection mouldings
- Full wrap-around rear bumper



**Ford Australia - We're moving with you.**

FORD FAIRLANE





# Specifications

FORD FAIRLANE		
Engine	4.1 litre	4.1 litre EFI
Power DIN Kw*	103 @ 3750	120 @ 4000
Torque DIN Nm*	316 @ 2400	333 @ 3000
Cylinder head material:	Aluminium alloy with sintered iron valve seat inserts	Aluminium alloy with sintered iron valve seat inserts
Cylinders	6 in line	6 in line
Main Bearings	7	7
Fan	Temperature sensitive viscous clutch (TSVC)	Temperature sensitive viscous clutch (TSVC)
Bore	93.5mm	93.5mm
Stroke	99.3mm	99.3mm
Capacity	4089cc	4089cc
Valve Gear	Overhead valves with hydraulic tappets	Overhead valves with hydraulic tappets
Camshaft Drive	Chain Drive	Chain Drive
Compression Ratio*	9.3:1	8.9:1

\*Not necessarily applicable for vehicles manufactured for sale in NSW.

Suspension	
Front	Rear
<ul style="list-style-type: none"> <li>•Independent short/long arm</li> <li>•Progressive rate coil springing</li> <li>•Twin tube telescopic shock absorbers mounted co-axially within the coil springs</li> <li>•22mm diameter stabiliser bar</li> </ul>	<ul style="list-style-type: none"> <li>•Rigid axle</li> <li>•4 trailing arms with Watts Linkage</li> <li>•Progressive rate coil springing</li> <li>•Twin tube telescopic shock absorbers mounted co-axially within the rear springs</li> <li>•22mm rear stabiliser bar</li> </ul>

Fuel System	
4.1 litre	4.1 litre EFI
Weber model 'ADM' dual venturi, sequential (progressive) throttle, fixed jet downdraft carburettor with electrically operated choke. Mechanical fuel pump.	Digital computer control based on volumetric air flow and engine speed with additional fuel flow modifiers from throttle position sensor, engine coolant sensor and vane air meter temperature sensor.

Dimensions	Metric	Imperial
Overall Length	5014mm	197.4'
Overall Width	1868mm	73.5'
Overall Height	1395mm	54.9'
Wheelbase	2957mm	116.4'
Track — Front	1548mm	60.9'
— Rear	1533mm	60.4'
Usable fuel tank capacity	80.0 litres	17.6 gal.
Boot capacity	0.45m <sup>3</sup>	15.9 ft <sup>3</sup>
Turning Circle — curb to curb	12.8m	42.0 ft

**Selected Fuel Economy Data**  
This data is based upon AS2077 tests conducted by Ford. It is not applicable to vehicles manufactured for sale in New South Wales.

4.1 litre 3-speed automatic		These figures are provided to assist you in comparing the fuel consumption of Fairlane with other vehicles. The actual fuel consumption you achieve will depend, however, on many factors, including your driving habits, the prevailing conditions and your vehicle's equipment, condition and use.
City Cycle	Highway Cycle	
20.9 mpg	28.3 mpg	
13.5 litres/100km	10.0 litres/100km	
4.1 litre EFI		
City Cycle	Highway Cycle	
19.5 mpg	26.9 mpg	
14.5 litres/100km	10.5 litres/100km	

# Options

FORD FAIRLANE			
Engine/Transmission Combinations			
Engine	Transmission	Notes	Availability
4.1 litre EFI engine	T-bar automatic		OPT
Convenience			
Alloy Road Wheels			OPT
Philips Premium Sound System		(a)	OPT
Trip computer		(b)	OPT
Towing pack		(c)	OPT
Tyre Availability			
ER70H14 steel belt radial ply			STD
Appearance			
Diamond Lustre Paint		(d)	OPT

STD — Standard Equipment. OPT — Optional at extra cost.

**About this specification sheet.** This sheet is designed to provide you with selected specification data for the Ford Products which have been described in a general way in the relevant brochure. Because of changes in conditions and circumstances Ford\* reserves the right, subject to all applicable laws, at any time, at their discretion, and without notice to discontinue or change the features, designs, materials, colours and other specifications and the prices of their products, and to either permanently or temporarily withdraw any such products from the market without incurring any liability to any prospective purchaser or purchaser. Because of variations which occur in manufactured products, all capacities, measurements, dimensions and weights quoted in the relevant brochure and this specification sheet should be taken as approximate only. Always consult an Authorised Ford Dealer for the latest information with respect to features, specifications, prices, optional equipment and availability before deciding to place an order.

\*FORD MOTOR COMPANY OF AUSTRALIA LIMITED  
(Incorporated in Victoria)  
FORD SALES COMPANY OF AUSTRALIA LIMITED  
(Incorporated in Victoria)  
Registered offices:  
1735 SYDNEY ROAD, CAMPBELLFIELD, VICTORIA, 3061.

- Footnotes**
- (a) Philips Premium Sound System comprises:
- AM/FM Radio
    - Electronic touch tuning with a vacuum fluorescent display for station frequency
    - Memory storage: 5 AM and 5 FM stations
    - Search up and down plus a scan feature
    - Local/distance switch
    - Programmable switch-on facility
  - Cassette Deck
    - Tape Select for CrO<sub>2</sub>/Metal or Normal Tapes
    - Dolby noise reduction control
    - Attenuation switch for noise volume reduction
    - Ceramic playback head
    - Automatic reverse
  - Graphic Equalizer
    - A total adjustment of 24 dB on each of 7 adjustable frequency bands
    - Switch to restore the frequency response to a neutral level irrespective of control positions
    - Fader control and balance control
  - Power Amplifier
    - Low distortion, high output power amplifier is mounted under the console. Four channels are provided each of 22 watts maximum.
  - Speakers
    - Two 4 inch twin cone speakers located in the front door. A pair of 3-way speakers is mounted on the rear parcel shelf.
- (b) The trip computer is optional on Fairlane only with the EFI engine. It is controlled by a micro-processor and provides access to a total of twelve functions. It monitors and provides instant, accurate information on fuel, speed, distance and time, and also contains three built in alarm systems to assist in improving safety and economy.
- (c) The Towing Pack is a factory fitted option and provides a towing capacity of 1200 kgs for all 4.1 litre vehicles, when used in conjunction with a suitable caravan or trailer braking system and towing equipment. This pack comprises:
- Tow Bar
  - Gooseneck
  - Wiring harness with 7 pin electrical connector
  - Transmission oil cooler (automatic transmissions only)
- Note: The caravan or trailer braking system and any other items (such as the tow ball and safety chains) required for the attachment of a trailer, caravan or the like to the vehicle are not supplied as part of the Pack, and must be purchased at extra cost or be supplied by the purchaser of the vehicle.
- The Towing Pack is designed to be incorporated in the vehicle during the assembly of the vehicle. The actual towing capability and performance of a vehicle will depend upon many factors including the suitability of the caravan, trailer, etc., the condition of the vehicle, the vehicle load, the vehicle specifications (including engine capacity, transmission type, axle ratio, tyre type and size), weather conditions, road gradient, terrain and other prevailing conditions.
- A towing accessory is also available for fitment from your Authorised Ford Dealer. A Ford-approved transmission oil cooler must be fitted in conjunction with any towing accessory fitted to automatic vehicles and used to tow a gross weight of more than 500 kgs. Consult your Authorised Ford Dealer for the latest information with respect to the specifications and the availability of this accessory towing pack.
- (d) Not all colours are available in Diamond Lustre Paint. Consult the Ford colour selector or your Authorised Ford Dealer to determine which colours are available in Diamond Lustre Paint.