

F-100 Styleside & Chassis Cab 1986 M.Y.

F-SERIES 4x2

F-100 4 x 2 : MASS—LOAD RATINGS

Gross Vehicle Mass, Gross Combination Mass, and Ground Ratings (kg)

GVM — PLATED	2766
GCM — PLATED	4600
Front Axle	1542
Front Tyres	1800 (P235/75R-15 [EL])
Front Suspension @ Ground	1598
FRONT RATING	1542
Rear Axle	1701
Rear Tyres	1800 (P235/75R-15 [EL])
Rear Suspension @ Ground	1891
REAR RATING	1701

* ABOVE TABLE SHOWS MINIMUM EQUIPMENT REQUIRED FOR PLATED GVM/GCM

AXLE FRONT

- Twin I Beam independent front suspension with adjustable camber feature

AXLE REAR

- Traction-lok limited slip differential;
- Rating 1701 kg; 229 mm diameter ring gear;
- Ratio 3.50:1

BRAKES

- **Service:** Dual line power assisted hydraulic
- **Front:** Single piston floating caliper, ventilated disc; ● **Rear:** Duo-servo drum with automatic adjusters;
- **Size:** ● **Front:** 295 mm diameter; ● **Swept area:** 1418 cm² ● **Rear:** 280 x 57 mm; ● **Lining area:** 618 cm²
- **Power assistance unit:** Direct acting tandem diaphragm vacuum booster; 280 mm diameter
- **Park Brake:** Foot operated, variable ratio, cable actuation of rear brakes, with hand operated release

CHASSIS

- Pressed steel; Ladder type
- Section 176 x 56.6 x 3.7 mm; ● Section modulus 52.4 cm³

CLUTCH

- Single Plate dry clutch of 280 mm diameter; Diaphragm spring pressure plate; Hydraulic actuation; ● Total facing area 798 cm²

DRIVELINE

- 1330 Series

ELECTRICAL

- 12 Volt negative earth system; Battery 12 V 53 amp hour capacity; Alternator 55 amp capacity; ● Headlamps rectangular halogen with integral parking lamps; Front turn signal lamps; Side turn signal repeater lamp; Rear combination stop-tail-turn signal — backup-lamps with integral rear reflectors; ● Single horn; ● Two speed windscreen wipers with intermittent setting; Windscreen washers; ● Interior courtesy lamp actuated by doors and lighting switch
- Instruments — Speedometer-odometer, Tachometer, Fuel gauge, Water temperature gauge, Ammeter gauge, Oil pressure gauge
- Warning lights for — Alternator charge; High beam; Brake circuit fail; Direction indicator; Park brake

ENGINE

- Ford 5.0 litre EFI V/8 (unleaded petrol);
- †Nett power at specified RPM 126 KW @ 4000;

- †Nett torque at specified RPM 358 Nm @ 2500

Specification: ● Type 8-cyl, 90° Vee, Overhead Valve; ● Displacement (litres) 5.0; ● Bore and Stroke (inches) 4.00 x 3.00; ● Compression Ratio (to 1) 9.0; ● Main Bearings 5; ● Valve Lifters hydraulic; ● Fuel Injection System multi-port; ● Fuel unleaded; ● Ignition electronic; ● Exhaust single

Features: ● Eight-port synchronous single-fire strategy fuel injection system; ● New intake air system with remote engine mounted air cleaner assembly; ● Modern, lightweight cylinder block; ● EEC-IV electronic engine controls; ● Speed-density air flow measurement system; ● Reduced back-pressure exhaust system; ● Self-adjusting hydraulic valve lifters; ● Five steel-backed copper-lead main bearings; ● Positive rotators on exhaust valves; ● Uses unleaded fuel

FUEL SYSTEM (Dual Tank)

- 144 litre capacity (72 litre mid-frame and 72 litre aft axle)

FRONT SUSPENSION

- Coil springs with telescopic double-acting shock absorbers;

REAR SUSPENSION

- Semi elliptical leaf spring; ● Auxilliary rear leaf spring; ● Telescopic double acting shock absorbers;

STEERING

- Power steering (Bendix variable ratio; Ratio 11-17.5:1)

TRANSMISSION

- New Process 435; 4 speed manual floor shift; Synchronesh on 2, 3, 4;
- Ratios 6.69; 3.34; 1.79; 1.00:1
- Reverse 8.26:1; ● 6 bolt SAE pattern PTO opening RH side

WHEELS

- 15 x 6 pressed steel; 5 stud; 5 supplied

TYRES

- P235/75R—15 (EL) radial tubeless — 5 supplied
- **Spare wheel carrier:** Under rear fuel tank

CAB

- **Features:** ● All steel construction; Full panel polypropylene inner splash panels; ● Full width folding adjustable bench seat; Inertia reel seat belts RH and LH Static centre lap seat belt; ● Tinted-Band, laminated windscreen; ● Full width rubber floor mat; Full width padded sun visors; ● Fresh air ventilation and three speed heater

- demister; ● AM/FM P.B. radio;
- Ashtray and integral cigar lighter;
- Lockable glove box; ● Coat hook;
- Prismatic interior rear view mirror;
- Interior hood release; ● Headlining and moulded retainers including full length "B" pillar moulding; ● Bright door trim moulding ● Lowline swinglock R/V exterior rear view mirrors
- Passenger grab handle

Styleside Features: ● Inner and outer skin construction to resist damage; Galvanized side panels for rust protection; Polypropylene splash shields; Curved wall to floor transition to resist dirt and rust catching areas; ● Quickly detachable tailgate with single hand opening operation; ● Provision for stake body extensions; ● Cab and Styleside body finish; Electrocoat undercoating process with baked enamel finish;
- Rear wheel mudflaps

XLT STYLESIDE MODEL

- AM/FM stereo cassette radio; ● Full length deep pile carpeting; Cloth seat trim; ● Digital clock; ● Dual horn;
- Woodgrained instrument panel;
- Carpeted door stowage bin; ● Black grille and headlamps surround; ● Front bumper overriders; ● Rear step bumper
- White tonneau cover; ● Rear wheel mudflaps; ● Full width brushed aluminium tailgate applique; ● Double door seal; ● XLT Badge on front fenders; ● Turbine style wheel cover;
- Lower bodyside moulding; ● Rope cleats

OPTIONAL EQUIPMENT

Automatic Transmission: Not available on LWB Chassis Cab ● Ford C6 3-speed automatic with torque converter; Ratios 2.46; 1.46; 1.00:1; Reverse 2.18:1; Steering column change with illuminated quadrant

Appearance Equipment: ● Victoria tu-tone paint treatment (XLT model only) including Accent Tape Stripe

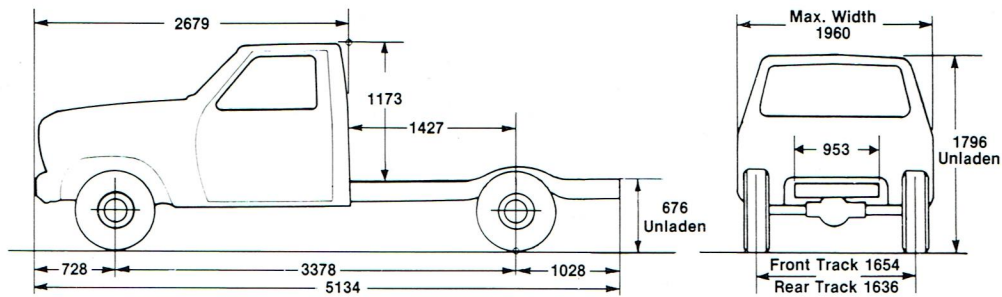
Convenience Equipment: ● Air conditioning

†Actual engine flywheel power has been derived from test procedure DIN 70020. As there can be variations in the performance ratings of individual units, the above ratings must be taken as being approximate only. (See notes on reverse side hereof.)

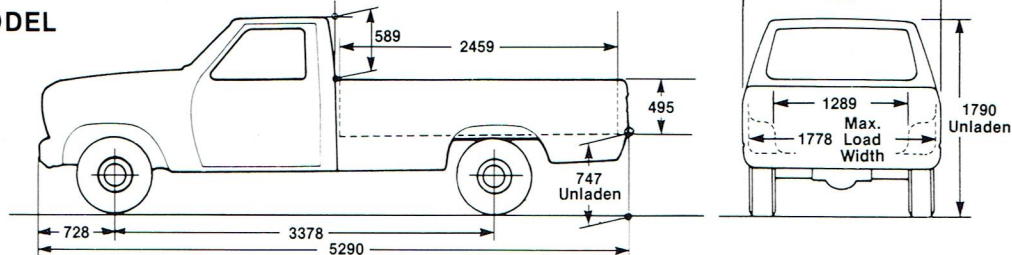
F-100 Styleside & Chassis Cab 1986 M.Y.

F-SERIES 4x2

CHASSIS-CAB MODEL (3378 WB)



STYLESIDE PICK-UP MODEL (3378 WB)



DIMENSIONAL DATA

Dimensions — Minimum Equipment — mm

Dimensions — Minimum Equipment — mm	Turning Dia* [†]
3378 WB Styleside Pick-Up	13.6 m
3378 WB Chassis-Cab	13.6 m

*Kerb to kerb

MASS DATA

Kerb Mass — Minimum Equipment — kg*

Kerb Mass — Minimum Equipment — kg*	Front	Rear	Total
3378 WB Styleside Pick-Up Manual Transmission	981	689	1670
3378 WB Chassis Cab Manual Transmission	980	518	1498

*Kerb Mass includes all fluids, full fuel, less driver and passenger. Kerb masses are calculated and subject to variation.

BODY DATA

Body, Payload and Occupant Capacity* — Minimum Equipment — kg

3378 WB Styleside Pick-Up	1624
3378 WB Chassis-Cab	1268

Recommended Body Dimensions mm (Subject to State Regulations)

3378 WB Chassis-Cab — Length O/A 2950 × Width O/A 2100

*Recommended Min. Payload 68 kg

PLEASE NOTE:

■ 1. This specification sheet contains a general description only of the Ford Product referred to on the sheet, its specifications and features and the optional equipment which is currently available for use on or in connection with such product. Generally the optional equipment referred to is available at extra or variable cost. Certain optional equipment can only be used or ordered in combination with other optional equipment. ■ 2. The illustrations, information and specifications presented and referred to in this specification sheet were correct at the time when the specification sheet was approved for printing. However, Ford* Motor Company of Australia Limited reserves the right, subject to the laws of Australia and/or any applicable State or Territory thereof and/or the regulations of any competent Authority which may apply from time to time, at its discretion at any time and without prior notice to discontinue or change the models, features, specifications, designs and prices of the product referred to in this sheet and any optional equipment therefor without incurring any liability whatsoever to any purchaser or prospective purchaser of any of such products. ■ 3. All capacities, measurements, dimensions and weights quoted in this specification sheet are approximate only. ■ 4. Because of the possibility of changes in models and the information, specifications, features, standard equipment and optional equipment of or for the product referred to in this specification sheet a prospective purchaser is strongly advised to consult an Authorised Ford Dealer for the latest information on models, specifications, features, standard equipment, optional equipment, prices and availability before placing an order. ■ 5. From time to time deliveries are delayed by causes outside the reasonable control of Ford Motor Company of Australia Limited, or its Authorised Ford Dealers. When an order has been placed, please keep in touch with your Authorised Ford Dealer.

*FORD MOTOR COMPANY OF AUSTRALIA LIMITED
(Incorporated in Victoria)
Registered Office: 1735 Sydney Road,
Campbellfield, Victoria, 3061.



F-100 Styleside & Chassis Cab 1986 M.Y.

F-SERIES 4x4

F-100 4x4 : MASS—LOAD RATINGS

Gross Vehicle Mass, Gross Combination Mass, and Ground Ratings (kg)

GVM — PLATED	2880
GCM — PLATED	4600
Front Axle	1610
Front Tyres	1800 (P235/75R-15 [EL])
Front Suspension @ Ground	1655
FRONT RATING	1610
Rear Axle	1701
Rear Tyres	1800 (P235/75R-15 [EL])
Rear Suspension @ Ground	1711
REAR RATING	1701

* ABOVE TABLE SHOWS MINIMUM EQUIPMENT REQUIRED FOR PLATED GVM/GCM

AXLE FRONT

● Twin-traction Beam independent front suspension; Make: Dana 44-IFS; Hypoid; 216 mm diameter ring gear; ● Ratio 3.50:1; ● Fitted with manual free wheel hubs; ● Capacity 1610 kg

AXLE REAR

● Ford semi-floating hypoid; ● Ratio 3.50:1; ● Traction-Lok LSD; 229 mm diameter ring gear; ● Capacity 1701 kg

BRAKES

● **Service:** Dual line power assisted hydraulic; ● **Front:** Single piston floating caliper, ventilated disc; Disc diameter 295 mm; ● **Swept area:** 1418 cm²; ● **Rear:** Duo-servo drum with automatic adjusters; ● **Size:** 280 × 57 mm; ● **Lining area:** 618 cm²; ● **Power assistance unit:** Direct action tandem diaphragm; ● **Park brake:** Foot operated, variable ratio, cable actuation of rear brakes, with hand operated release

CHASSIS

● Pressed steel; Ladder construction; Section 176 × 56.6 × 3.7 mm; ● Section modulus 52.4 cm³ ● Front tow hooks

CLUTCH

● Single Plate dry clutch of 280 mm diameter; Diaphragm spring pressure plate; Hydraulic actuation; ● Total facing area 798 cm²

DRIVELINE

● 1330 Series

ELECTRICAL

● 12 Volt negative earth system; Battery 12 V 53 amp hour capacity; Alternator 55 amp capacity; ● Headlamps rectangular halogen with integral parking lamps; Front turn signal lamps; Side turn signal repeater lamp; Rear combination stop-tail-turn signal — backup-lamps with integral rear reflectors; ● Single horn; ● Two speed windscreen wipers with intermittent setting; Windscreen washers; ● Interior courtesy lamp actuated by doors and lighting switch
● Instruments — Speedometer-odometer, Tachometer, Fuel gauge, Water temperature gauge, Ammeter gauge, Oil pressure gauge
● Warning lights for — Alternator charge; High beam; Brake circuit fail; Direction indicator; Park brake

ENGINE

● Ford 5.0 litre EFI V8 (unleaded petrol);
● †Nett power at specified RPM
126 KW @ 4000;
● †Nett torque at specified RPM
358 Nm @ 2500

● **Specification:** ● Type 8-cyl, 90° Vee, Overhead Valve; ● Displacement (litres) 5.0; ● Bore and Stroke (inches) 4.00 × 3.00; ● Compression Ratio (to 1) 9.0; ● Main Bearings 5; ● Valve Lifters hydraulic; ● Fuel Injection System multi-port; ● Fuel unleaded; ● Ignition electronic; ● Exhaust single

● **Features:** ● Eight-port synchronous single-fire strategy fuel injection system; ● New intake air system with remote engine mounted air cleaner assembly; ● Modern, lightweight cylinder block; ● EEC-IV electronic engine controls; ● Speed-density air flow measurement system; ● Reduced back-pressure exhaust system; ● Self-adjusting hydraulic valve lifters; ● Five steel-backed copper-lead main bearings; ● Positive rotators on exhaust valves; ● Uses unleaded fuel

FUEL SYSTEM

● 144 litre capacity (72 litre mid-frame and 72 litre aft axle)

FRONT SUSPENSION

● Coil springs with telescopic double-acting shock absorbers;

REAR SUSPENSION

● Semi elliptic leaf spring; Two stage with telescopic double acting shock absorbers

STEERING

● Power steering (Bendix variable ratio; Ratio 11-17.5:1)

TRANSMISSION

● New Process 435; Four forward speed with synchronmesh on 2nd, 3rd, 4th gears; ● Ratios 6.69; 3.34; 1.79; 1.00:1 Reverse 8.26:1; ● 6 bolt SAE pattern PTO mounting RH side; ● **Transfer:** New Process 208 model two speed with floor change; ● Ratios 2.61; 1.00:1

WHEELS

● 15 × 7 styled wheel (white) 5 stud; 5 supplied

TYRES

● P235/75R—15 (EL) radial ply tyres; 5 supplied

● **Spare wheel carrier:** Under rear fuel tank

CAB

● **Features:** ● All steel construction; Full panel polypropylene inner splash panels; ● Full width folding adjustable bench seat; Inertia reel seat belts RH and LH Static centre lap seat belt; ● Tinted-Band, laminated windscreen; ● Full width rubber floor mat; Full width

padding sun visors; ● Fresh air ventilation and three speed heater demister; ● AM/FM P.B. radio; ● Ashtray and integral cigar lighter; ● Lockable glove box; ● Coat hook; ● Prismatic interior rear view mirror; ● Interior hood release; ● Headlining and moulded retainers including full length "B" pillar moulding; ● Bright door trim moulding ● Lowline swinglock R/V exterior rear view mirrors with trailer arm

● **Styleside Features:** ● Inner and outer skin construction to resist damage; Galvanised side panels for rust protection; Curved wall to floor transition to resist dirt and rust catching areas; ● Quickly detachable tailgate with single hand opening operation; ● Provision for stake body extensions; ● Cab and Styleside body finish; Electrocoat undercoating process with baked enamel finish; ● Rear wheel mudflaps

XLT STYLESIDE MODEL

Interior Features: ● AM/FM stereo radio/cassette; ● Full length carpeting; ● Cloth seat trim; ● Woodgrained instrument panel; ● Digital clock; ● Dual horn; ● Exterior features: Black grille and headlamp surround; ● Front bumper overrides; ● Rear step bumper, argent paint;

● White tonneau cover; ● Rear wheel mudflaps; ● Full width brushed aluminium tailgate applique; ● Double door seal; ● XLT Badges; ● Lower bodyside moulding; ● Rope cleats

OPTIONAL EQUIPMENT

Automatic Transmission: Not Available on LWB Chassis Cab:

● Ford C6 3-speed automatic with torque converter; Ratios 2.46; 1.46; 1.00:1; Reverse 2.18:1; Steering column change with illuminated quadrant

Appearance Equipment: ● Victoria tone paint treatment (XLT model only) including Accent Tape Stripe

Convenience Equipment: ● Air conditioning

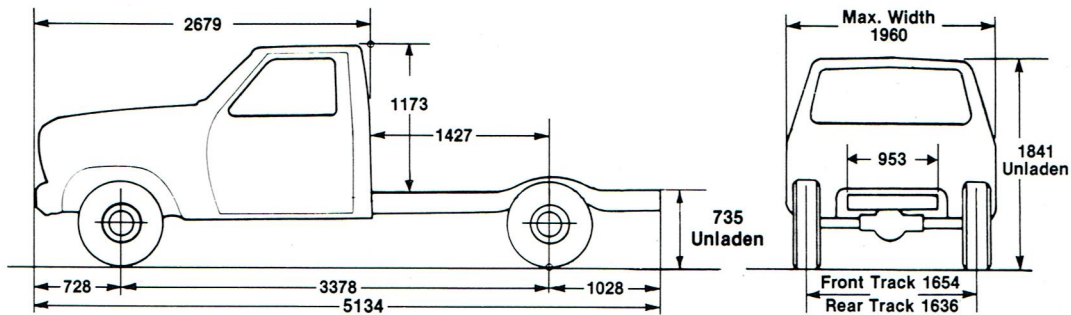
● **Functional Equipment:** 10R × 15 tyres

†Actual engine flywheel power has been derived from test procedure DIN 70020. As there can be variations in the performance ratings of individual units, the above ratings must be taken as being approximate only. (See notes on reverse side hereof.)

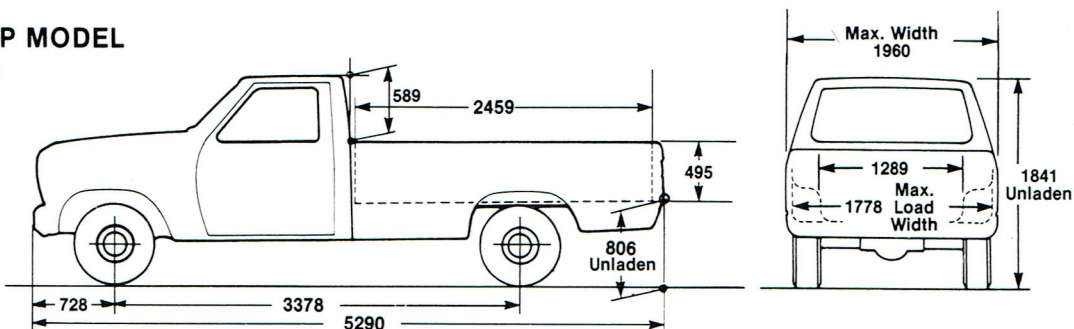
F-100 Styleside & Chassis Cab 1986 M.Y.

F-SERIES 4x4

CHASSIS-CAB MODEL (3378 WB)



STYLESIDE PICK-UP MODEL (3378 WB)



DIMENSIONAL DATA

Dimensions — Minimum Equipment — mm

	Turning Dia*
3378 WB Styleside Pick-Up	13.8 m
3378 WB Chassis-Cab	13.8 m

*Kerb to kerb

MASS DATA

Kerb Mass — Minimum Equipment — kg*

	Front	Rear	Total
3378 WB Styleside Pick-Up Manual Transmission	1136	741	1877
3378 WB Chassis-Cab Manual Transmission	1118	592	1710

*Kerb Mass includes all fluids, full fuel, less driver and passenger. Kerb masses are calculated and subject to variation.

BODY DATA

Body, Payload and Occupant Capacity* — Minimum Equipment — kg

3378 WB Styleside Pick-Up	1003
3378 WB Chassis-Cab	1170

Recommended Body Dimensions mm (Subject to State Regulations)

3378 WB Chassis-Cab — Length O.A. 2950 × Width O/A 2100

PLEASE NOTE:

■ 1. This specification sheet contains a general description only of the Ford Product referred to on the sheet, its specifications and features and the optional equipment which is currently available for use on or in connection with such product. Generally the optional equipment referred to is available at extra or variable cost. Certain optional equipment can only be used or ordered in combination with other optional equipment. ■ 2. The illustrations, information and specifications presented and referred to in this specification sheet were correct at the time when the specification sheet was approved for printing. However, Ford* Motor Company of Australia Limited reserves the right, subject to the laws of Australia and/or any applicable State or Territory thereof and/or the regulations of any competent Authority which may apply from time to time, at its discretion at any time and without prior notice to discontinue or change the models, features, specifications, designs and prices of the product referred to in this sheet and any optional equipment therefor without incurring any liability whatsoever to any purchaser or prospective purchaser of any of such products. ■ 3. All capacities, measurements, dimensions and weights quoted in this specification sheet are approximate only. ■ 4. Because of the possibility of changes in models and the information, specifications, features, standard equipment and optional equipment of or for the product referred to in this specification sheet a prospective purchaser is strongly advised to consult an Authorised Ford Dealer for the latest information on models, specifications, features, standard equipment, optional equipment, prices and availability before placing an order. ■ 5. From time to time deliveries are delayed by causes outside the reasonable control of Ford Motor Company of Australia Limited, or its Authorised Ford Dealers. When an order has been placed, please keep in touch with your Authorised Ford Dealer.

*FORD MOTOR COMPANY OF AUSTRALIA LIMITED
(Incorporated in Victoria)
Registered Office: 1735 Sydney Road,
Campbellfield, Victoria, 3061.



F-350 Chassis Cab 1986 M.Y.

F-SERIES 4x4

F-350 4x4 : MASS—LOAD RATINGS

Gross Vehicle Mass, Gross Combination Mass, and Ground Ratings (kg)

GVM — PLATED	4127
GCM — PLATED	*6800
Front Axle	2086
Front Tyres	2876 (9.50R16.5E [TT])
Front Suspension @ Ground	1746
FRONT RATING	1746
Rear Axle	2835
Rear Tyres	2876 (9.50R16.5E [TT])
Rear Suspension @ Ground	3607
REAR RATING	2835

*ABOVE TABLE SHOWS MINIMUM EQUIPMENT REQUIRED FOR PLATED GVM/GCM

AXLE FRONT

- Dana 50IFS Twin Traction Beam Independent Front Suspension;
- Ratio 4.1:1; ● Capacity 2086 kg
- Fitted with manual free wheel hubs

AXLE REAR

- Ford E6, full floating, hypoid type 4.1 ratio; 260 mm pitch diameter ring gear; Limited slip differential
- Capacity 2835kg

BRAKES

- **Service:** Dual line power assisted hydraulic; ● **Front:** Dual piston floating caliper, ventilated disc;
- **Rear:** Duo-servo drum with automatic adjusters; ● **Size:**
- **Front:** 316 mm diameter discs; **Swept area:** 1558 cm²; **Rear:** 305 × 76 mm; **Lining area:** 951 cm²;
- **Power assistance unit:** Direct acting tandem diaphragm vacuum booster; 280 mm diameter; ● **Park Brake:** Foot operated, variable ratio, cable actuation of rear brakes, with hand operated release

CHASSIS

- Pressed steel; Ladder type Section 179.1 × 56.1 × 5.1 mm;
- Section modulus 70.9 cm³

CLUTCH

- Single Plate dry clutch of 280 mm diameter; Diaphragm spring pressure plate; Hydraulic actuation;
- Total facing area 798 cm²

DRIVELINE

- 1330 Series

ELECTRICAL

- 12 Volt negative earth system; Battery 12 V 53 amp hour capacity; Alternator 55 amp capacity;
- Headlamps rectangular halogen with integral parking lamps; Front turn signal lamps; Side turn signal repeater lamps plus reflectors; Rear combination stop-tail-turn signal backup-lamps with integral rear reflectors; ● Single horn; ● Two speed windscreen wipers with intermittent setting; Windscreen washers; ● Interior courtesy lamp actuated by doors and lighting switch

- Instruments — Speedometer-odometer, Tachometer, Ammeter gauge, Oil pressure gauge; Fuel gauge; Water temperature gauge;
- Warning lights for — Alternator charge; High beam; Brake circuit fail; Direction indicator; Park brake, 4 × 4 Lock

ENGINE

- Ford 5.0 litre EFI V8 (unleaded petrol);
- †Nett power at specified RPM 126 KW @ 4000;
- †Nett torque at specified RPM 358 Nm @ 2500
- **Specification:** ● Type 8-cyl, 90° Vee, Overhead Valve;
- Displacement (litres) 5.0; ● Bore and Stroke (inches) 4.00 × 3.00;
- Compression Ratio (to 1) 9.0;
- Main Bearings 5; ● Valve Lifters hydraulic; ● Fuel Injection System multi-port; ● Fuel unleaded;
- Ignition electronic; ● Exhaust single

- **Features:** ● Eight-port synchronous single-fire strategy fuel injection system; ● New intake air system with remote engine mounted air cleaner assembly; ● Modern, lightweight cylinder block; ● EEC-IV electronic engine controls; ● Speed-density air flow measurement system; ● Reduced back-pressure exhaust system; ● Self-adjusting hydraulic valve lifters; ● Five steel-backed copper-lead main bearings;
- Positive rotators on exhaust valves; ● Uses unleaded fuel

FUEL SYSTEM

- 72 litre fuel tank mid-frame mounted and 72 litre aft of axle fuel tank; Total capacity 144 litres

FRONT SUSPENSION

- Leaf springs with heavy duty freon filled telescopic double-acting shock absorbers and stabiliser bar

REAR SUSPENSION

- Semi elliptic, with single leaf auxiliary springs and stabiliser bar;
- Heavy duty freon filled telescopic double-acting shock absorbers

STEERING

- Bendix Power Assisted Variable Ratio, Ratio 11-17.5:1

TRANSMISSION

- New Process 435; 4 speed manual with synchromesh on 2, 3, 4 gears; Floor shift; Ratios 6.69; 3.34; 1.79; 1.00:1; Reverse 8.26:1; ● 6 bolt SAE pattern power take-off opening at RH side

- **Transfer Case:** ● B.W. 1345; Two speed; ● Ratios 2.74 & 1.00:1

WHEELS

- 16.5 × 6.75 8 hole disc; 5 supplied

TYRES

- 9.5R16.5E (TT) (10PR Radials); 5 supplied
- **Spare wheel carrier:** Under frame at the rear

CAB

- **Features:** ● All steel construction; Full panel polypropylene inner splash panels;
- Full width folding adjustable bench seat; Inertia reel seat belts RH and LH; ● Static centre lap seat belt; ● Laminated windscreen;
- Full width rubber floor mat; Two sun visors; ● Fresh air ventilation and three speed heater demister;
- Ash tray with integral cigar lighter; ● Lockable glove box;
- Two lowline swinglock rear vision mirrors; ● Coat hook; Electrocoat undercoating process; Baked enamel finish; ● Internal hood release; ● Headlining and moulded retainers incl full length "B" pillar moulding, bright door trim moulding;
- AM/FM P.B. Radio ● Passenger grab handle

OPTIONAL EQUIPMENT

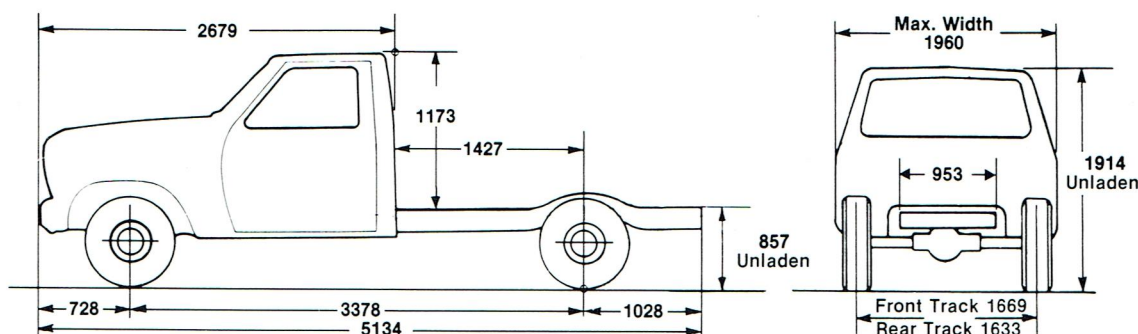
- **Convenience Equipment:** ● Air conditioning

†Actual engine flywheel power has been derived from test procedure DIN 70020. As there can be variations in the performance ratings of individual units, the above ratings must be taken as being approximate only. (See notes on reverse side hereof.)

**F-350
Chassis Cab
1986 M.Y.**

F-SERIES 4x4

**CHASSIS-CAB
MODEL**



DIMENSIONAL DATA

Dimensions — Minimum Equipment — mm

3378 WB Chassis Cab

Turning Dia*

15.7 m

*Kerb to kerb

MASS DATA

Kerb Mass — Minimum Equipment — kg*

3378 WB Chassis-Cab Manual Transmission

Front

Rear

Total

1247.5

815.5

2063

*Kerb Mass includes all fluids, full fuel, less driver and passenger. Kerb masses are calculated and subject to variation.

BODY DATA

Body, Payload and Occupant Capacity* — Minimum Equipment — kg

3378 WB Chassis-Cab

2061

Recommended Body Dimensions mm (Subject to State Regulations)

3378 WB Chassis-Cab — Length O/A 2950 × Width O/A 2100

*Recommended Min. Payload 114 kg

PLEASE NOTE:

■ 1. This specification sheet contains a general description only of the Ford Product referred to on the sheet, its specifications and features and the optional equipment which is currently available for use on or in connection with such product. Generally the optional equipment referred to is available at extra or variable cost. Certain optional equipment can only be used or ordered in combination with other optional equipment. ■ 2. The illustrations, information and specifications presented and referred to in this specification sheet were correct at the time when the specification sheet was approved for printing. However, Ford* Motor Company of Australia Limited reserves the right, subject to the laws of Australia and/or any applicable State or Territory thereof and/or the regulations of any competent Authority which may apply from time to time, at its discretion at any time and without prior notice to discontinue or change the models, features, specifications, designs and prices of the product referred to in this sheet and any optional equipment therefor without incurring any liability whatsoever to any purchaser or prospective purchaser of any of such products. ■ 3. All capacities, measurements, dimensions and weights quoted in this specification sheet are approximate only. ■ 4. Because of the possibility of changes in models and the information, specifications, features, standard equipment and optional equipment of or for the product referred to in this specification sheet a prospective purchaser is strongly advised to consult an Authorised Ford Dealer for the latest information on models, specifications, features, standard equipment, optional equipment, prices and availability before placing an order. ■ 5. From time to time deliveries are delayed by causes outside the reasonable control of Ford Motor Company of Australia Limited, or its Authorised Ford Dealers. When an order has been placed, please keep in touch with your Authorised Ford Dealer.

*FORD MOTOR COMPANY OF AUSTRALIA LIMITED
(Incorporated in Victoria)
Registered Office: 1735 Sydney Road,
Campbellfield, Victoria, 3061.



**F-SERIES
AMBULANCE
CHASSIS CAB
1986 M.Y.**

F-SERIES 4x2

F-SERIES AMBULANCE : MASS—LOAD RATINGS

Gross Vehicle Mass, Gross Combination Mass, and Ground Ratings (kg)

GVM — PLATED	3366
GCM — PLATED	N/A
Front Axle	1769
Front Tyres	2400 (225/75-R16)
Front Suspension @ Ground	1526
FRONT RATING	1526
Rear Axle	2404
Rear Tyres	2400 (225/75-R16)
Rear Suspension @ Ground	2140
REAR RATING	2140

* ABOVE TABLE SHOWS MINIMUM EQUIPMENT REQUIRED FOR PLATED GVM/GCM

AXLE FRONT

- Independent suspension by twin I beam and coil springs

AXLE REAR

- Traction-lock limited slip differential;
- Rating 2404 kg; 260 mm diameter ring gear;
- Ratio 3.55:1

BRAKES

- **Service:** Dual line power assisted hydraulic

- **Front:** Single piston floating caliper, ventilated disc; ● **Rear:** Duo-servo drum with automatic adjusters;

- **Size:** ● **Front:** 320 mm diameter discs; **Swept area:** 1564 cm²
- **Rear:** 305 × 64 mm; **Lining area:** 763 cm²

- **Power assistance unit:** Direct acting tandem diaphragm vacuum booster; 280 mm diameter

- **Park Brake:** Foot operated, variable ratio, cable actuation of rear brakes, with hand operated release

CHASSIS

- Pressed steel; Ladder type Section 177.8 × 55.9 × 4.6 mm;
- Section modulus 65.5 cm³

DRIVELINE

- 1330 Series

ELECTRICAL

- 12 Volt negative earth system; Battery 12 V 80 amp hour capacity; Alternator 80 amp capacity;

- Headlamps rectangular halogen with integral parking lamps; Front turn signal lamps; Side turn signal repeater lamp; Rear combination stop-tail-turn signal backup-lamps with integral rear reflectors;

- Single horn; ● Dual two speed windscreen wipers with intermittent setting; windscreen washers;

- Interior courtesy lamp actuated by doors and lighting switch

- Instruments — Speedometer-odometer Tachometer, Fuel gauge, Water temperature gauge, Ammeter gauge, Oil pressure gauge

- Warning lights for — Alternator charge; High beam; Brake circuit fail; Direction indicator; Park brake

ENGINE

- Ford 5.0 litre EFI V/8 (unleaded petrol);

- †Nett power at specified RPM 126 KW @ 4000;

- †Nett torque at specified RPM 358 Nm @ 2500

- **Specification:** ● Type 8-cyl, 90° Vee, Overhead Valve;

- Displacement (litres) 5.0; ● Bore and Stroke (inches) 4.00 × 3.00;

- Compression Ratio (to 1) 9.0;

- Main Bearings 5; ● Valve Lifters hydraulic; ● Fuel Injection System multi-port; ● Ignition electronic;

- Exhaust single

- **Features:** ● Eight-port synchronous single-fire strategy fuel injection system; ● New intake air system with remote engine mounted air cleaner assembly; ● Modern, lightweight cylinder block; ● EEC-IV electronic engine controls; ● Speed-density air flow measurement system; ● Reduced back-pressure exhaust system; ● Self-adjusting hydraulic valve lifters; ● Five steel-backed copper-lead main bearings;

- Positive rotators on exhaust valves

- **FUEL SYSTEM**

- 72 litre fuel tank mid-frame mounted
- 72 litre fuel tank aft-axle mounted

FRONT SUSPENSION

- Coil springs with telescopic shock absorbers; Front axle stabilizer bar

REAR SUSPENSION

- Semi elliptic leaf spring;

- Telescopic shock absorbers; Rear axle stabilizer bar

STEERING

- Power steering (Bendix variable ratio; Ratio 11-17.5:1)

TRANSMISSION

- **Automatic Transmission:** Ford C6 3 speed automatic with torque converter; Ratios 2.46; 1.46; 1.00:1; Reverse 2.18:1; Steering column change with illuminated quadrant;

WHEELS

- 16 × 6K rim; 8 hole; 5 supplied

TYRES

- P225/75R—16; 5 supplied

- **Spare wheel carrier:** Under tank at the rear

CAB

- **Features:** ● All steel construction; Full panel polypropylene inner splash panels;

- Two cloth trimmed front bucket seats with adjustable headrests;

- Inertia reel seat belts RH and LH;

- Tinted-Band, laminated windscreen; ● Full width rubber floor mat; Full width padded sun visors; ● Fresh air ventilation and three speed heater demister;

- Ashtray and integral cigar lighter;

- Lockable glove box; ● Lowline swinglock exterior rear view mirrors;

- Coat hook; Prismatic interior rear view mirror; ● Interior hood release;

- Four-bar link tilting passenger seat ● Passenger grab handle ● 3 Tonne Jack ● Black painted hood

- **OPTIONAL EQUIPMENT**

- **Convenience Equipment:** ● Air conditioning

- **OPTIONAL EQUIPMENT**

- **Convenience Equipment:** ● Air conditioning

- **OPTIONAL EQUIPMENT**

- **Convenience Equipment:** ● Air conditioning

- **OPTIONAL EQUIPMENT**

- **Convenience Equipment:** ● Air conditioning

- **OPTIONAL EQUIPMENT**

- **Convenience Equipment:** ● Air conditioning

- **OPTIONAL EQUIPMENT**

- **Convenience Equipment:** ● Air conditioning

- **OPTIONAL EQUIPMENT**

- **Convenience Equipment:** ● Air conditioning

- **OPTIONAL EQUIPMENT**

- **Convenience Equipment:** ● Air conditioning

- **OPTIONAL EQUIPMENT**

- **Convenience Equipment:** ● Air conditioning

- **OPTIONAL EQUIPMENT**

- **Convenience Equipment:** ● Air conditioning

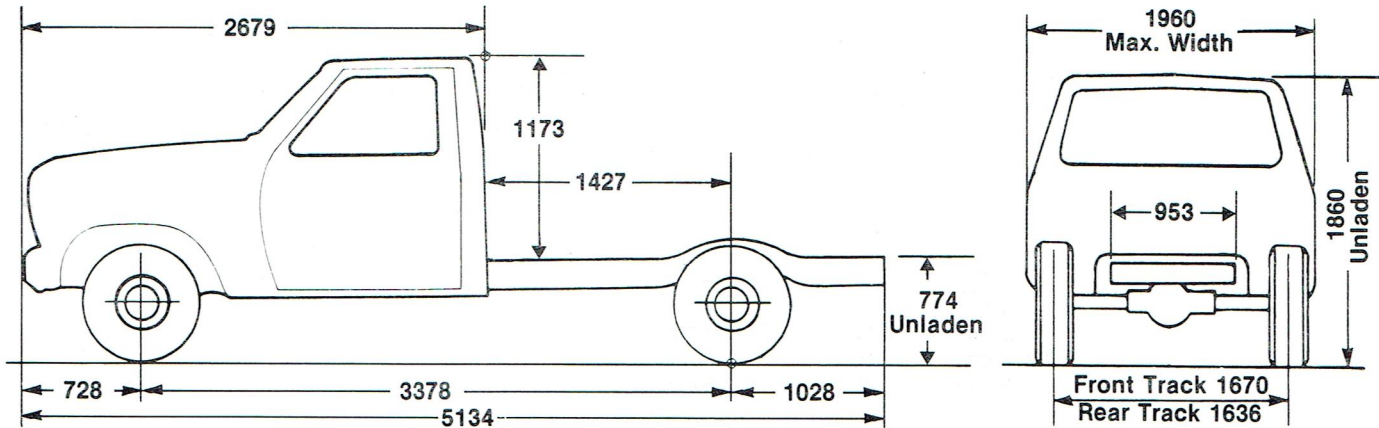
- **OPTIONAL EQUIPMENT**

- **Convenience Equipment:** ● Air conditioning

†Actual engine flywheel power has been derived from test procedure DIN 70020. As there can be variations in the performance ratings of individual units, the above ratings must be taken as being approximate only. (See notes on reverse side hereof.)

**F-SERIES
AMBULANCE
CHASSIS CAB
1986 M.Y.**

F-SERIES 4x2



DIMENSIONAL DATA (SEE ABOVE)

Turning Diameter	Turning Dia*
3378 WB Chassis Cab	14.5m

*Kerb to kerb

MASS DATA

Kerb Mass — Minimum Equipment — kg*	Front	Rear	Total
3378 WB Chassis-Cab Automatic Transmission	1070	670	1740

*Kerb Mass includes all fluids, full fuel, less driver and passenger. Kerb masses are calculated and subject to variation.

BODY DATA

Body, Payload and Occupant Capacity — Minimum Equipment — kg	
3378 WB Chassis-Cab	1626

PLEASE NOTE:

■ 1. This specification sheet contains a general description only of the Ford Product referred to on the sheet, its specifications and features and the optional equipment which is currently available for use on or in connection with such product. Generally the optional equipment referred to is available at extra or variable cost. Certain optional equipment can only be used or ordered in combination with other optional equipment. ■ 2. The illustrations, information and specifications presented and referred to in this specification sheet were correct at the time when the specification sheet was approved for printing. However, Ford Motor Company of Australia Limited reserves the right, subject to the laws of Australia and/or any applicable State or Territory thereof and/or the regulations of any competent Authority which may apply from time to time, at its discretion at any time and without prior notice to discontinue or change the models, features, specifications, designs and prices of the product referred to in this sheet and any optional equipment therefor without incurring any liability whatsoever to any purchaser or prospective purchaser of any of such products. ■ 3. All capacities, measurements, dimensions and weights quoted in this specification sheet are approximate only. ■ 4. Because of the possibility of changes in models and the information, specifications, features, standard equipment and optional equipment of or for the product referred to in this specification sheet a prospective purchaser is strongly advised to consult an Authorised Ford Dealer for the latest information on models, specifications, features, standard equipment, optional equipment, prices and availability before placing an order. ■ 5. From time to time deliveries are delayed by causes outside the reasonable control of Ford Motor Company of Australia Limited, or its Authorised Ford Dealers. When an order has been placed, please keep in touch with your Authorised Ford Dealer.

