

FORD FAIRLANE
BECAUSE YOU DESERVE IT.





Ford Fairlane is Australia's prestige Town and Country car.

It's the car that's right for you, because you deserve it.

Through its clean flowing lines with discreet pin-striping, to the new 'Snowflake' pattern alloy wheels, Fairlane is a true symbol of your success.

Fairlane's reputation for outstanding comfort, space and ride is already well established.

It is these attributes, together with its high levels of engineering and technology, that make today's Fairlane so rewarding to drive and to own.

Ford Fairlane is truly the car for you.

The interior of Fairlane has been designed to provide you with the comfort, controls and driving ease to make it a pleasure to be behind the wheel.

The cloth-covered seats are big and comfortable. The driver's seat back features a variable lumbar support adjustment, and the cushion tilt angle can also be adjusted. The steering wheel is height-adjustable and can be set to suit your preferred driving position. There's a left foot rest to help you relax.

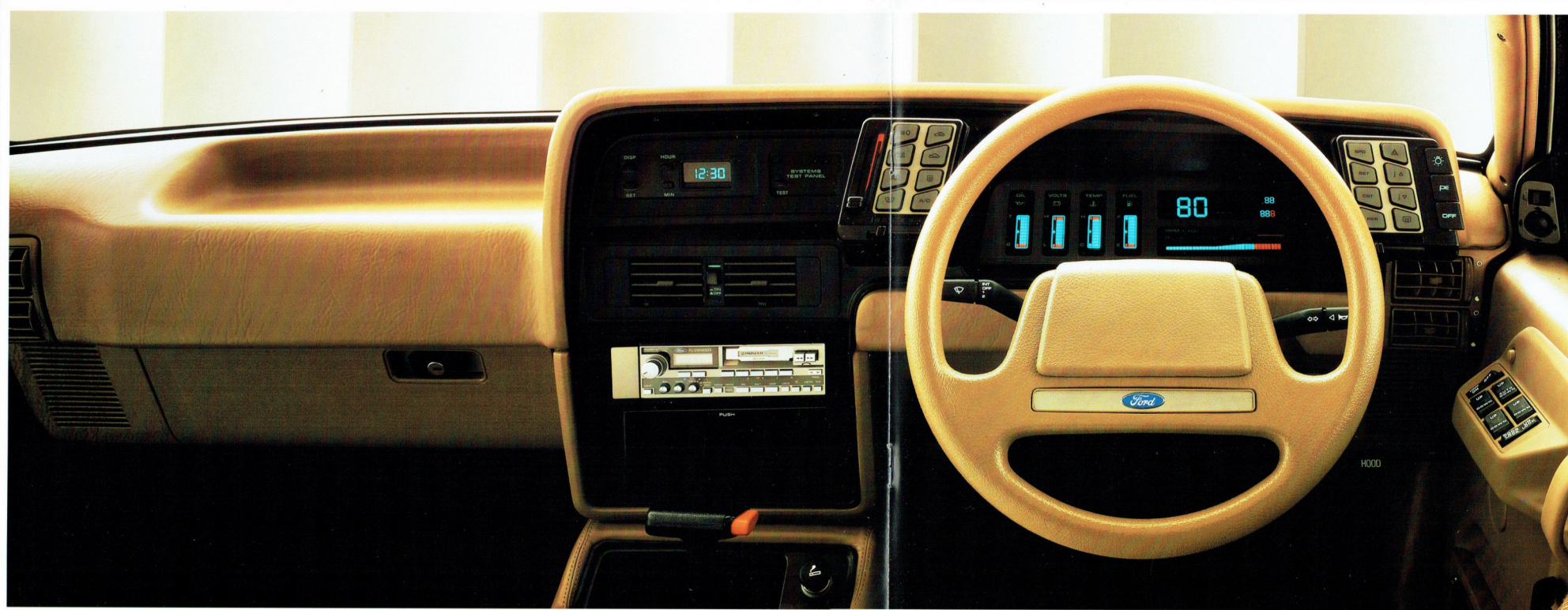
Exterior rear view mirrors are electrically controlled as are the boot and fuel-filler cover releases.

The air-conditioner has motorised front centre air vents to assist air circulation. Rear seat passengers can enjoy the comfort of cool air ducting while appreciating the generous space which provides plenty of room for the long-legged and broad shouldered.

The rear seat backrest has a 'double-fold' centre section. It folds to form an armrest. It folds again to form a wide, convenient tray, leaving an opening to the boot.

Ford Fairlane—equipped with all you've come to expect in Australia's leading prestige car.





Despite its obvious luxury and comfort, Fairlane is very much a driver's car.

The instrumentation is positioned to provide information at a glance, and the controls are designed to give the driver easy access.

Feather-touch, push-button switches for the air-conditioner, heater, lights, power antenna and cruise control are positioned for easy operation.

Moulded door panels have conveniently located electric window and door-locking controls set into the front armrests.

The cruise control helps to reduce the fatigue associated with long-distance driving and also helps avoid the natural tendency for gradually increasing speed without realising it, on long trips.

Digital displays keep you informed about the car's speed, engine revs, fuel, engine temperature and oil pressure.

Additional information provided by the comprehensive array of warning lights, includes letting you know whether the tail lamps are working, the headlamps are left on and the radiator or washer water levels are getting low.

Now, Fairlane is fitted with Ford's 4.1 litre six-cylinder electronic fuel-injected engine as standard equipment.

This engine provides flexible performance over a broad range of operating conditions and enables the Fairlane to cruise effortlessly all day. Both maximum power and maximum torque are developed at low engine speeds, making the EFI engine extremely practical for everyday use in stop/start city driving, and also very suitable for towing.

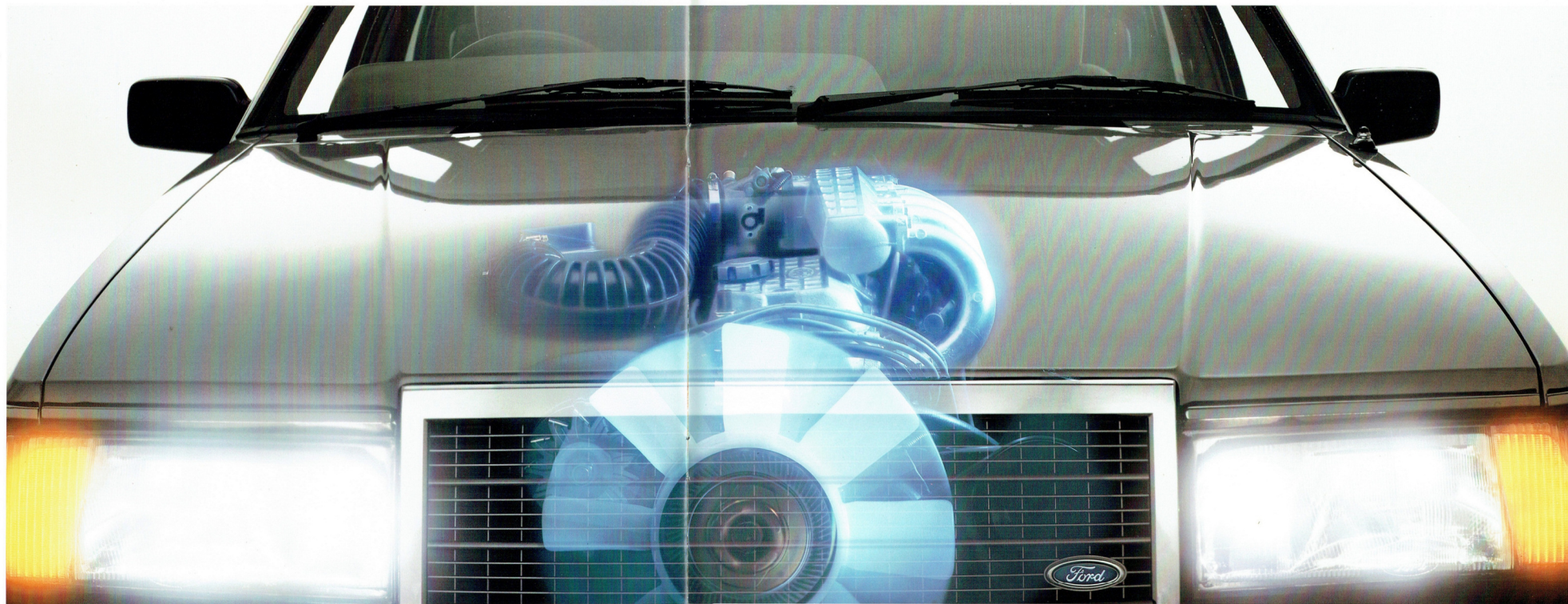
Specially modified to run on unleaded petrol, Fairlane's EFI/EEC4 engine features a revised combustion chamber shape, piston ring and valve stem seal designs and a higher lift camshaft.

The EFI engine utilises a digital computer to monitor and control engine functions more than 80 times per second. The result is rapid starting and engine warm-up, smooth idling, excellent driveability and good fuel economy.

Called EEC4, the computer is one of the world's most advanced engine management systems.

You can rely on Fairlane to offer the smooth, strong six-cylinder performance and excellent fuel economy which have helped make this vehicle the undisputed market leader in its class.

Ford Fairlane. Because you deserve it.



BECAUSE YOU DESERVE IT.



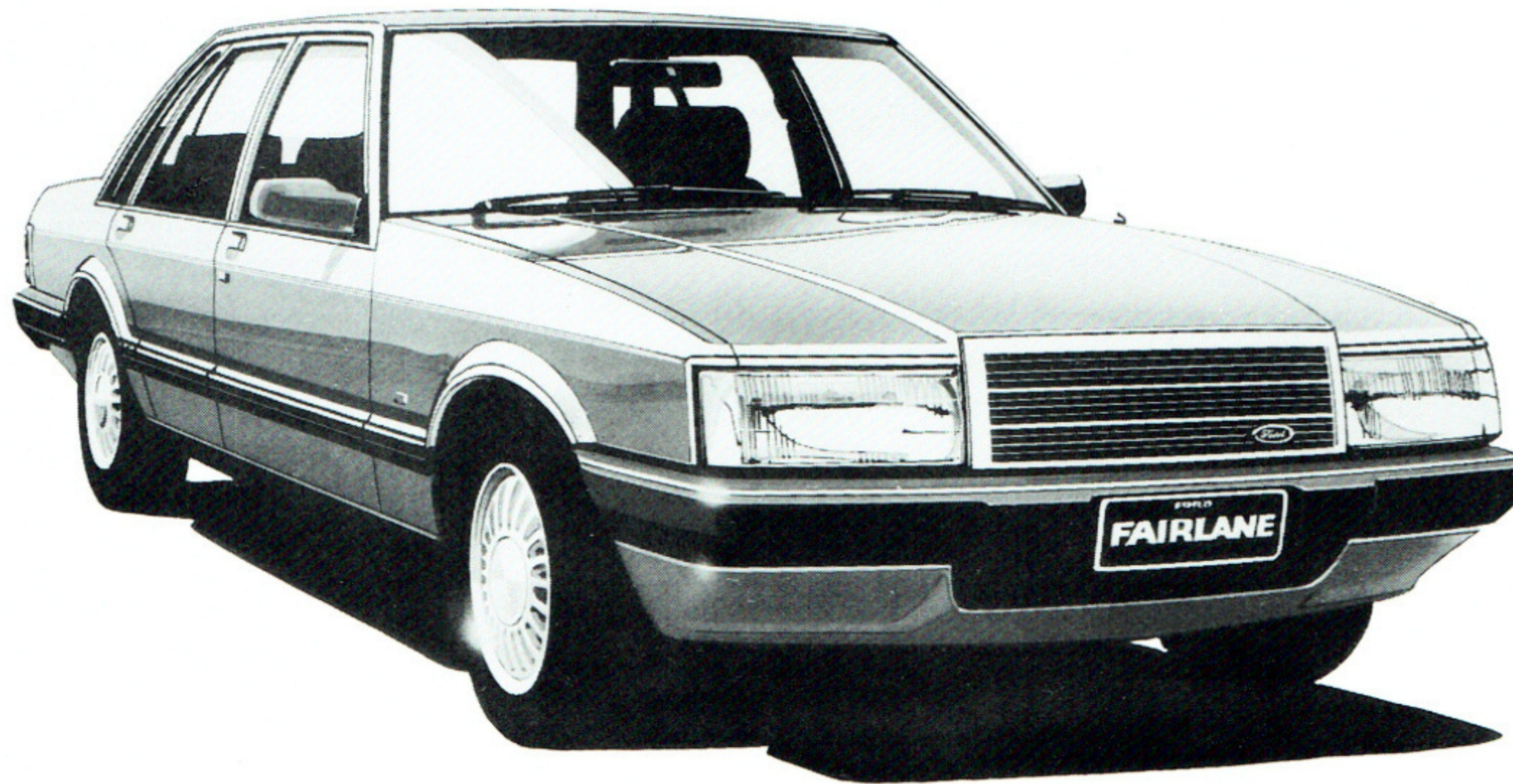
About this brochure. This brochure is designed to provide you with a general introduction to the Ford Products (including available optional equipment) referred to, and should be read in conjunction with the latest specification sheets. Because of changes in conditions and circumstances Ford* reserves the right, subject to all applicable laws, at any time, at its discretion, and without notice to discontinue or change the features, designs, materials, colours and other specifications and the prices of its products, and to either permanently or temporarily withdraw any such products from the market without incurring any liability to any purchaser or prospective purchaser.

The latest specification sheet should be referred to for information on the availability, ordering and use of optional equipment. Always consult an Authorised Ford Dealer for the latest information with respect to features, specifications, prices, optional equipment and availability before deciding to place an order.

*FORD MOTOR COMPANY OF AUSTRALIA LTD.
(Incorporated in Victoria)
Registered Office: 1735 Sydney Road,
Campbellfield, Victoria. 3061.

PRINTED OCTOBER 1986

Ford Fairlane



Fairlane illustrated with optional Alloy Wheels.

Ford Fairlane Standard Equipment Highlights

- 4.1 litre Alloy Head II 6 cylinder engine
- Electronic ignition
- Watts Link rear suspension
- 3-speed T-bar automatic transmission
- Steel wheels: 14" x 6" JJ
- Styled full wheel covers
- Steel belt radial ply tyres: ER70 H14
- Wide section quartz halogen headlamps with integrated driving lamps and high intensity turn indicator lamps
- 4-wheel disc brakes
- Limited slip differential
- Power assisted steering
- Adjustable steering column
- Cruise control
- Pod mounted push button switches
- Comprehensive electronic instrumentation with high visibility vacuum fluorescent type displays
- Power operated door locks and windows
- Air conditioning
- Motorised oscillating ventilation outlet
- Rear passenger compartment air conditioning/ventilation outlets
- Audio system: AM/FM stereo radio/cassette player (4 speakers) with many features including electronic touch tuning, digital frequency readout, station search, tape music search and Dolby noise reduction
- Foldaway power operated left and right hand side exterior rear view mirrors
- Diagonal Tweed/"Velvet" Knit seat facings
- Reclining front bucket seats
- Adjustable lumbar support and seat tilt for the driver
- Adjustable front and rear head restraints
- Fold down centre rear seat section with armrest
- Centre console with storage bin
- Prismatic day/night adjustable interior rear view mirror
- Passenger vanity mirror with cover
- Moulded door trims with Diagonal Tweed armrest insert
- Plush carpet on passenger compartment floor
- Remote boot release with security switch
- Remote fuel lid release
- Child proof rear door lock setting
- Comprehensive interior courtesy lighting, including an illuminated entry system operating from both front door handles
- Cigar lighters, front and two rear
- Driver's footrest
- Tinted band laminated windscreen
- Tinted side and rear glass
- Heated rear window
- 4-speed fan boosted ventilation/heating
- Power operated antenna
- Warning light array
- Systems check panel
- Hazard flashers
- Wide bodyside protection mouldings
- Full wrap-around rear bumper



Ford Australia - We're moving with you.

FORD FAIRLANE



Specifications

FORD FAIRLANE		
Engine	4.1 litre	4.1 litre EFI
Power DIN Kw*	103 @ 3750	120 @ 4000
Torque DIN Nm*	316 @ 2400	333 @ 3000
Cylinder head material:	Aluminium alloy with sintered iron valve seat inserts	Aluminium alloy with sintered iron valve seat inserts
Cylinders	6 in line	6 in line
Main Bearings	7	7
Fan	Temperature sensitive viscous clutch (TSVC)	Temperature sensitive viscous clutch (TSVC)
Bore	93.5mm	93.5mm
Stroke	99.3mm	99.3mm
Capacity	4089cc	4089cc
Valve Gear	Overhead valves with hydraulic tappets	Overhead valves with hydraulic tappets
Camshaft Drive	Chain Drive	Chain Drive
Compression Ratio*	9.3:1	8.9:1

*Not necessarily applicable for vehicles manufactured for sale in NSW.

Suspension	
Front	Rear
<ul style="list-style-type: none"> •Independent short/long arm •Progressive rate coil springing •Twin tube telescopic shock absorbers mounted co-axially within the coil springs •22mm diameter stabiliser bar 	<ul style="list-style-type: none"> •Rigid axle •4 trailing arms with Watts Linkage •Progressive rate coil springing •Twin tube telescopic shock absorbers mounted co-axially within the rear springs •22mm rear stabiliser bar

Fuel System	
4.1 litre	4.1 litre EFI
Weber model 'ADM' dual venturi, sequential (progressive) throttle, fixed jet downdraft carburettor with electrically operated choke. Mechanical fuel pump.	Digital computer control based on volumetric air flow and engine speed with additional fuel flow modifiers from throttle position sensor, engine coolant sensor and vane air meter temperature sensor.

Dimensions	Metric	Imperial
Overall Length	5014mm	197.4'
Overall Width	1868mm	73.5'
Overall Height	1395mm	54.9'
Wheelbase	2957mm	116.4'
Track — Front	1548mm	60.9'
— Rear	1533mm	60.4'
Usable fuel tank capacity	80.0 litres	17.6 gal.
Boot capacity	0.45m ³	15.9 ft ³
Turning Circle — curb to curb	12.8m	42.0 ft

Selected Fuel Economy Data
This data is based upon AS2077 tests conducted by Ford. It is not applicable to vehicles manufactured for sale in New South Wales.

4.1 litre 3-speed automatic		These figures are provided to assist you in comparing the fuel consumption of Fairlane with other vehicles. The actual fuel consumption you achieve will depend, however, on many factors, including your driving habits, the prevailing conditions and your vehicle's equipment, condition and use.
City Cycle	Highway Cycle	
20.9 mpg	28.3 mpg	
13.5 litres/100km	10.0 litres/100km	
4.1 litre EFI		
City Cycle	Highway Cycle	
19.5 mpg	26.9 mpg	
14.5 litres/100km	10.5 litres/100km	

Options

FORD FAIRLANE			
Engine/Transmission Combinations			
Engine	Transmission	Notes	Availability
4.1 litre EFI engine	T-bar automatic		OPT
Convenience			
Alloy Road Wheels			OPT
Philips Premium Sound System		(a)	OPT
Trip computer		(b)	OPT
Towing pack		(c)	OPT
Tyre Availability			
ER70H14 steel belt radial ply			STD
Appearance			
Diamond Lustre Paint		(d)	OPT

STD — Standard Equipment. OPT — Optional at extra cost.

About this specification sheet. This sheet is designed to provide you with selected specification data for the Ford Products which have been described in a general way in the relevant brochure. Because of changes in conditions and circumstances Ford* reserves the right, subject to all applicable laws, at any time, at their discretion, and without notice to discontinue or change the features, designs, materials, colours and other specifications and the prices of their products, and to either permanently or temporarily withdraw any such products from the market without incurring any liability to any prospective purchaser or purchaser. Because of variations which occur in manufactured products, all capacities, measurements, dimensions and weights quoted in the relevant brochure and this specification sheet should be taken as approximate only. Always consult an Authorised Ford Dealer for the latest information with respect to features, specifications, prices, optional equipment and availability before deciding to place an order.

*FORD MOTOR COMPANY OF AUSTRALIA LIMITED
(Incorporated in Victoria)
FORD SALES COMPANY OF AUSTRALIA LIMITED
(Incorporated in Victoria)
Registered offices:
1735 SYDNEY ROAD, CAMPBELLFIELD, VICTORIA, 3061.

- Footnotes**
- (a) Philips Premium Sound System comprises:
1. AM/FM Radio
 - Electronic touch tuning with a vacuum fluorescent display for station frequency
 - Memory storage: 5 AM and 5 FM stations
 - Search up and down plus a scan feature
 - Local/distance switch
 - Programmable switch-on facility
 2. Cassette Deck
 - Tape Select for CrO₂/Metal or Normal Tapes
 - Dolby noise reduction control
 - Attenuation switch for noise volume reduction
 - Ceramic playback head
 - Automatic reverse
 3. Graphic Equalizer
 - A total adjustment of 24 dB on each of 7 adjustable frequency bands
 - Switch to restore the frequency response to a neutral level irrespective of control positions
 - Fader control and balance control
 4. Power Amplifier
 - Low distortion, high output power amplifier is mounted under the console. Four channels are provided each of 22 watts maximum.
 5. Speakers
 - Two 4 inch twin cone speakers located in the front door. A pair of 3-way speakers is mounted on the rear parcel shelf.
- (b) The trip computer is optional on Fairlane only with the EFI engine. It is controlled by a micro-processor and provides access to a total of twelve functions. It monitors and provides instant, accurate information on fuel, speed, distance and time, and also contains three built in alarm systems to assist in improving safety and economy.
- (c) The Towing Pack is a factory fitted option and provides a towing capacity of 1200 kgs for all 4.1 litre vehicles, when used in conjunction with a suitable caravan or trailer braking system and towing equipment. This pack comprises:
- Tow Bar
 - Gooseneck
 - Wiring harness with 7 pin electrical connector
 - Transmission oil cooler (automatic transmissions only)
- Note: The caravan or trailer braking system and any other items (such as the tow ball and safety chains) required for the attachment of a trailer, caravan or the like to the vehicle are not supplied as part of the Pack, and must be purchased at extra cost or be supplied by the purchaser of the vehicle. The Towing Pack is designed to be incorporated in the vehicle during the assembly of the vehicle. The actual towing capability and performance of a vehicle will depend upon many factors including the suitability of the caravan, trailer, etc., the condition of the vehicle, the vehicle load, the vehicle specifications (including engine capacity, transmission type, axle ratio, tyre type and size), weather conditions, road gradient, terrain and other prevailing conditions. A towing accessory is also available for fitment from your Authorised Ford Dealer. A Ford-approved transmission oil cooler must be fitted in conjunction with any towing accessory fitted to automatic vehicles and used to tow a gross weight of more than 500 kgs. Consult your Authorised Ford Dealer for the latest information with respect to the specifications and the availability of this accessory towing pack.
- (d) Not all colours are available in Diamond Lustre Paint. Consult the Ford colour selector or your Authorised Ford Dealer to determine which colours are available in Diamond Lustre Paint.