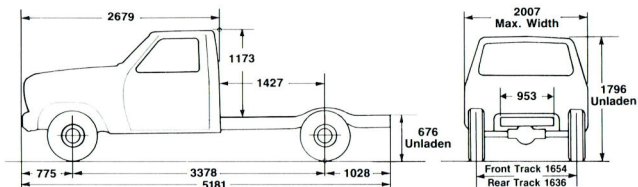
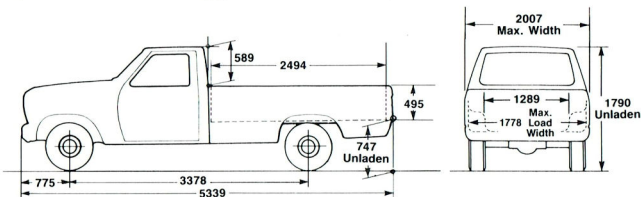


**CHASSIS CAB MODEL
(3378 WB)**



**STYLESIDE PICK-UP MODEL
(3378 WB)**



DIMENSIONAL DATA

Dimensions — Minimum Equipment — mm

Turning Dia*

3378 WB Styleside Pick-Up

13.6m

3378 WB Chassis Cab

13.6m

* Kerb to Kerb.

MASS DATA

Kerb Mass — Minimum Equipment — kg*

Front

Rear

Total

3378 WB Styleside Pick-Up Manual Transmission

1132

736

1868

3378 WB Chassis Cab Manual Transmission

1122

566

1688

* Kerb Mass includes all fluids, full fuel, less driver and passenger.

Kerb masses are calculated and subject to variation.

BODY DATA

Body, Payload and Occupant Capacity* — Minimum Equipment — kg

3378 WB Styleside Pick-Up

1012

3378 WB Chassis Cab

1192

Recommended Body Dimensions mm (Subject to State Regulations)

3378 WB Chassis Cab — Length O/A 2950 × Width O/A 2100

* Adjust for Optional Equipment

PLEASE NOTE:

■ 1. This specification sheet contains a general description only of the Ford Product referred to on the sheet, its specifications and features and the optional equipment which is currently available for use on or in connection with such product. Generally the optional equipment referred to is available at extra or variable cost. Certain optional equipment can only be used or ordered in combination with other optional equipment. ■ 2. The illustrations, information and specifications referred to in this specification sheet were correct at the time when the specification sheet was approved for printing. However, Ford Motor Company of Australia Limited reserves the right, subject to the laws of Australia and/or any applicable State or Territory thereof and/or the regulations of any competent Authority which may apply from time to time, at its discretion at any time and without prior notice to discontinue or change the models, features, specifications, designs and prices of the product referred to in this sheet and any optional equipment therefor without incurring any liability whatsoever to any purchaser or prospective purchaser of any of such products. ■ 3. All capacities, measurements, dimensions and weights quoted in this specification sheet are approximate only. ■ 4. Because of the possibility of changes in models and the information, specifications, features, standard equipment and optional equipment of or for the product referred to in this specification sheet a prospective purchaser is strongly advised to consult an Authorised Ford Dealer for the latest information on models, specifications, features, standard equipment, optional equipment, prices and availability before placing an order. ■ 5. From time to time deliveries are delayed by causes outside the reasonable control of Ford Motor Company of Australia Limited, or its Authorised Ford Dealers. When an order has been placed, please keep in touch with your Authorised Ford Dealer.

F-150 Styleside & Chassis Cab 1988 M.Y.

F-SERIES 4x2

F-150 4x2 : MASS—LOAD RATINGS

Gross Vehicle Mass, Gross Combination Mass, and Ground Ratings (kg)

GVM — PLATED	2880
GCM — PLATED	4600
Front Axle	1542
Front Tyres	1800 (P235/75R-15 [EL])
Front Suspension @ Ground	1598
FRONT RATING	1542
Rear Axle	1701
Rear Tyres	1800 (P235/75R-15 [EL])
Rear Suspension @ Ground	1891
REAR RATING	1701

* ABOVE TABLE SHOWS MINIMUM EQUIPMENT REQUIRED FOR PLATED GVM/GCM

AXLE FRONT

● Twin I beam independent front suspension with adjustable camber/caster feature

AXLE REAR

● Tractor-lock limited slip differential; ● Rating 1701kg; 224mm diameter ring gear; ● Ratio 4.10:1

BRAKES

● Light weight master cylinder with "see-through" plastic reservoir; ● Service: Dual line power assisted hydraulic; ● Front: Single piston floating caliper, ventilated disc; ● Rear Duo-servo drum with automatic adjusters and rear anti-lock braking system;

● Size: ● Front: 295mm diameter; ● Rear: 280x57mm; ● Lining Area: 618cm²; ● Power Assistance Unit: Direct acting tandem diaphragm vacuum booster; 280mm diameter;

● Park Brake: Foot operated, variable ratio, cable actuation of rear brakes, with hand operated release

CHASSIS

● Pressed steel; Ladder type Section 176x56.6x3.7mm; ● Section modulus 5.24cm³

CLUTCH

● Single plate dry clutch of 280mm diameter; Diaphragm spring pressure plate; Hydraulic actuation; ● Total facing area 616cm²

DRIVELINE

● 1330 Series

ELECTRICAL

● 12 Volt negative earth system; Battery 12V 400 c.c./95 minute reserve capacity; Alternator 70 amp capacity

● Headlamps rectangular halogen with integral parking lamps; Integral front and side turn signal lamps; Rear combination stop-tail-turn signal; backup-lamps with integral rear reflectors; ● Single horn; ● Two speed windshield wipers with intermittent setting; windshield washers; ● Interior courtesy lamp actuated by doors and lighting switch

INSTRUMENTS

● Instruments — Speedometer-odometer, Tachometer, Fuel gauge, Water temperature gauge, Ammeter gauge, Oil pressure gauge

● Warning lights for — Alternator charge; High beam; Brake circuit fail; Direction indicator; Park brake; EEC-IV malfunction; Rear anti-lock brake system malfunction

ENGINE

● Ford 5.0 litre EFI V8 (unleaded petrol);

● †Nett power at specified RPM

126 KW @ 4000;*

● †Nett torque at specified RPM

358 Nm @ 2500

● Poly-Vee Serpentine drive belt

● Specifications: ● Type 8-cyl, 90° Vee, Overhead Valve; ● Displacement (litres) 5.0; ● Bore and Stroke (inches) 4.00x3.00; ● Compression Ratio (to 1) 9.0; ● Main Bearings 5; ● Valve Lifters hydraulic; ● Fuel Injection System multi-port; ● Ignition electronic; ● Exhaust single

● Features: ● Eight-port synchronous single-fire strategy fuel injection system; ● New intake air system with remote mounted air cleaner assembly;

● Modern, lightweight cylinder block;

● EEC-IV electronic engine controls including: heated exhaust gas oxygen sensor, manifold absolute pressure

sensor, power steering pressure switch; ● Speed-density air flow measurement system; ● Reduced back-pressure exhaust system; ● Self-adjusting hydraulic valve lifters; ● Five steel-backed copper-lead main bearings;

● Positive rotators on exhaust valves

FUEL SYSTEM (Dual Tank)

● 138 litre capacity (72 litre mid-frame and 66 litre alt axle)

FRONT SUSPENSION

● Coil springs with gas pressurised telescopic double-acting shock absorbers

REAR SUSPENSION

● Semi elliptical leaf spring; ● Auxiliary rear leaf spring; ● Gas pressurised telescopic double-acting shock absorbers

STEERING

● Power steering (Bendix variable ratio; Ratio 11:17.5:1)

TRANSMISSION

● M50D; 5 speed overdrive manual floor shift; ● Ratios: 3.90, 2.25, 1.49, 1.00, 0.80:1, Reverse 3.41:1

WHEELS

● 15x6 pressed steel; 5 stud; 5 supplied

TYRES

● P235/75R—15 (EL) radial tubeless — 5 supplied

● Spare Wheel Carrier: Under rear fuel tank

CAB

● Features: ● All steel construction; Full panel polypropylene inner splash panels; ● Front bumper with integral black vinyl moulding; ● Argent/Chrome headlamp surrounds; ● Full width folding adjustable bench seat; cloth seat trim;

Inertia reel seat belts RH and LH Static centre lap seat belt; ● Tinted-Band, laminated windshield; ● Full width rubber floor mat; Full width padded sun visors; ● Fresh air ventilation and three speed heater demister; ● AM/FM radio/cassette with digital clock;

● Ashtray and integral cigar lighter;

● Lockable glove box; ● Coat hook;

● Prismatic interior rear view mirror;

● Interior hood release; ● Headlining and moulded retainers including full length "B" pillar moulding; ● Lowline swivellock exterior rear view mirrors;

● Passenger grab handle

● StyleSide Features: ● Inner and outer skin construction to resist damage;

Galvanised side panels for rust protection; Polypropylene splash shields; Curved wall to floor transition to resist dirt and rust catching areas;

● Quickly detachable tailgate with single hand opening operation; ● Provision for stake body extensions; Electrocoat undercoating process with baked enamel finish; ● Rear wheel mudflaps;

● Tethered fuel filler cap

● Tethered fuel filler cap

● Tethered fuel filler cap

● Tethered fuel filler cap

● Tethered fuel filler cap

● Tethered fuel filler cap

● Tethered fuel filler cap

● Tethered fuel filler cap

● Tethered fuel filler cap

● Tethered fuel filler cap

● Tethered fuel filler cap

● Tethered fuel filler cap

● Tethered fuel filler cap

● Tethered fuel filler cap

● Tethered fuel filler cap

● Tethered fuel filler cap

● Tethered fuel filler cap

● Tethered fuel filler cap

● Tethered fuel filler cap

● Tethered fuel filler cap

● Tethered fuel filler cap

● Tethered fuel filler cap

● Tethered fuel filler cap

● Tethered fuel filler cap

● Tethered fuel filler cap

● Tethered fuel filler cap

● Tethered fuel filler cap

● Tethered fuel filler cap

● Tethered fuel filler cap

● Tethered fuel filler cap

● Tethered fuel filler cap

● Tethered fuel filler cap

● Tethered fuel filler cap

● Tethered fuel filler cap

● Tethered fuel filler cap

● Tethered fuel filler cap

● Tethered fuel filler cap

● Tethered fuel filler cap

● Tethered fuel filler cap

● Tethered fuel filler cap

● Tethered fuel filler cap

● Tethered fuel filler cap

● Tethered fuel filler cap

● Tethered fuel filler cap

● Tethered fuel filler cap

● Tethered fuel filler cap

● Tethered fuel filler cap

● Tethered fuel filler cap

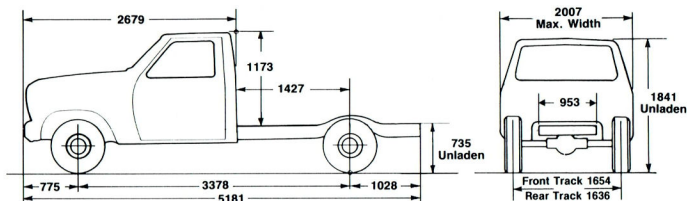
● Tethered fuel filler cap

● Tethered fuel filler cap

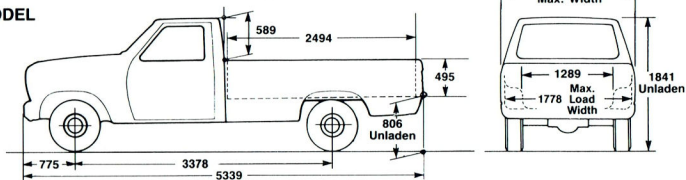
● Tethered fuel filler cap

†Actual engine flywheel power has been derived from test procedure DIN7020. As there can be variations in the performance ratings of individual units, the above ratings must be taken as being approximate only. (See notes on reverse side here.)

**CHASSIS CAB MODEL
(3378 WB)**



**STYLESIDE PICK UP MODEL
(3378 WB)**



DIMENSIONAL DATA

Dimensions — Minimum Equipment — mm

Dimensions — Minimum Equipment — mm	Turning Dia*
3378 WB Styleside Pick-Up	13.8m
3378 WB Chassis Cab	13.8m

* Kerb to Kerb.

MASS DATA

Kerb Mass — Minimum Equipment — kg*

	Front	Rear	Total
3378 WB Styleside Pick-Up Manual Transmission	1242	736	1978
3378 WB Chassis Cab Manual Transmission	1232	566	1798

* Kerb Mass includes all fluids, full fuel, less driver and passenger.

Kerb masses are calculated and subject to variation.

BODY DATA

Body, Payload and Occupant Capacity* — Minimum Equipment — kg

3378 WB Styleside Pick-Up	1022
3378 WB Chassis Cab	1202

Recommended Body Dimensions mm (Subject to State Regulations)

3378 WB Chassis Cab — Length O/A 2950 × Width O/A 2100

* Adjust for Optional Equipment

PLEASE NOTE:

■ 1. This specification sheet contains a general description only of the Ford Product referred to on the sheet, its specifications and features and the optional equipment which is currently available for use on or in connection with such product. Generally the optional equipment referred to is available at extra or variable cost. Certain optional equipment can only be used or ordered in combination with other optional equipment. ■ 2. The illustrations, information and specifications presented and referred to in this specification sheet were correct at the time when the specification sheet was approved for printing. However, Ford Motor Company of Australia Limited reserves the right, subject to the laws of Australia and/or any applicable State or Territory thereof and/or the regulations of any competent Authority which may apply from time to time, at its discretion at any time and without prior notice to discontinue or change the models, features, specifications, designs and prices of the product referred to in this sheet and any optional equipment therefor without incurring any liability whatsoever to any purchaser or prospective purchaser of any of such products. ■ 3. All capacities, measurements, dimensions and weights quoted in this specification sheet are approximate only. ■ 4. Because of the possibility of changes in models and the information, specifications, features, standard equipment and optional equipment of or for the product referred to in this specification sheet a prospective purchaser is strongly advised to consult an Authorised Ford Dealer for the latest information on models, specifications, features, standard equipment, optional equipment, prices and availability before placing an order. ■ 5. From time to time deliveries are delayed by causes outside the reasonable control of Ford Motor Company of Australia Limited, or its Authorised Ford Dealers. When an order has been placed, please keep in touch with your Authorised Ford Dealer.

F-150 Stylee & Chassis Cab 1988 M.Y.

F-SERIES 4x4

F-150 4x4 : MASS—LOAD RATINGS

Gross Vehicle Mass, Gross Combination Mass, and Ground Ratings (kg)

GVM — PLATED	3000
GCM — PLATED	4600
Front Axle	1610
Front Tyres	1800 (P235/75R-15 [EL])
Front Suspension @ Ground	1655
FRONT RATING	1610
Rear Axle	1701
Rear Tyres	1800 (P235/75R-15 [EL])
Rear Suspension @ Ground	1711
REAR RATING	1701

* ABOVE TABLE SHOWS MINIMUM EQUIPMENT REQUIRED FOR PLATED GVM/GCM

AXLE FRONT

● Twin-traction beam independent front suspension; Make: Dana 44-IFS; Hypoid; 216mm diameter ring gear; ● Ratio 4.10; ● Fitted with manual free wheel hubs; ● Capacity 1610kg

AXLE REAR

● Ford semi-floating hypoid; ● Ratio 4.10; ● Tractor-lock LSD; 224mm diameter ring gear; ● Capacity 1701kg

BRAKES

● Light weight master cylinder with "see-through" plastic reservoir; ● **Service:** Dual line power assisted hydraulic; ● **Front:** Single piston floating caliper, ventilated disc; Disc diameter 295mm; **Swept Area:** 1418cm²; ● **Rear:** Duo-servo drum with automatic adjusters and rear anti-lock braking system; ● **Size:** 280x57mm; **Lining Area:** 618cm²; ● **Power Assistance Unit:** Direct action tandem diaphragm; ● **Park Brake:** Foot operated, variable rate, cable actuation of rear brakes, with hand operated release

CHASSIS

● Pressed steel; Ladder construction; Section 176x566x3.7mm; ● Section modulus 52.4cm³; ● Front tow hooks

CLUTCH

● Single plate dry clutch of 280mm diameter; Diaphragm spring pressure plate; Hydraulic actuation; ● Total facing area 616cm²

DRIVELINE

● 1330 Series

ELECTRICAL

● 12 Volt negative earth system; Battery 12V 400 c.c.a./95 minute reserve capacity; Alternator 70 amp capacity ● Headlamps rectangular halogen with integral parking lamps; Integral front and side turn signal lamps; Rear combination stop-tail-turn signal backup-lamps with integral rear reflectors; ● Single horn; ● Two speed windshield wipers with intermittent setting; windshield washers; ● Interior courtesy lamp actuated by doors and lighting switch ● Instruments — Speedometer-odometer, Tachometer, Fuel gauge, Water temperature gauge, Ammeter gauge, Oil pressure gauge ● Warning lights for — Alternator charge; High beam; Brake circuit fail; Direction indicator; Park brake; EEC-IV malfunction; Rear anti-lock brake system malfunction

ENGINE

● Ford 5.0 litre EFI V8 (unleaded) petrol.

● **Nett power** at specified RPM 126 KW @ 4000; ● **Nett torque** at specified RPM 358 Nm @ 2500 ● **Poly-Vee Serpentine drive belt** ● **Specifications:** ● Type 8-cyl, 90° Vee, Overhead Valve; ● Displacement (litres) 5.0; ● Bore and Stroke (inches) 4.00x3.00; ● Compression Ratio (to 1) 9.0; ● Main Bearings 5; ● Valve Lifters hydraulic; ● Fuel Injection System multi-port; ● Ignition electronic; ● Exhaust single ● **Features:** ● Eight-port synchronous single-fire strategy fuel injection system; ● New intake air system with remote mounted air cleaner assembly; ● Modern, lightweight cylinder block; ● EEC-IV electronic engine controls including: heated exhaust gas oxygen sensor, manifold absolute pressure sensor, power steering pressure switch; ● Speed-density air flow measurement system; ● Reduced back-pressure exhaust system; ● Self-adjusting hydraulic valve lifters; ● Five steel-backed copper-lead main bearings; ● Positive rotators on exhaust valves

FUEL SYSTEM

● 138 litre capacity (72 litre mid-frame and 66 litre aft axle)

FRONT SUSPENSION

● Coil springs with gas pressurised telescopic double-acting shock absorbers

REAR SUSPENSION

● Semi elliptic leaf spring; ● Two stage with gas pressurised telescopic double-acting shock absorbers

STEERING

● Power steering (Bendix variable ratio; Ratio 11-17.5:1)

TRANSMISSION

● M50D; 5 speed overdrive manual floor shift; ● Ratios 3.90; 2.25; 1.49; 1.00; 0.80:1; Reverse 3.41:1

Transfer Case: Borg Warner 13-56 model two speed with floor change; ● Ratios 2.69; 1.00:1

WHEELS

● 15x7 styled wheel (Argent); 5 stud; 5 supplied

TYRES

● P235/75R-15 (EL) radial ply tyres; 5 supplied

● **Spare Wheel Carrier:** Under rear fuel tank

CAB

● **Features:** ● All steel construction; Full panel polypropylene inner splash panels; ● Front bumper with integral black vinyl moulding; ● Argent/Chrome headlam surrounds; ● Full width

folding adjustable bench seat; Cloth seat trim; Inertia reel seat belts RH and LH Static centre lap seat belt; ● Tinted-Band, laminated windshield; ● Full width rubber floor mat; Full width padded sun visors; ● Fresh air ventilation and three speed heater demister; ● AM/FM radio/cassette with digital clock; ● Ashtray and integral cigar lighter; ● Lockable glove box; ● Coat hook; ● Prismatic interior rear view mirror; ● Interior hood release; ● Headlining and moulded retainers including full length "B" pillar moulding; ● Lowline swinglock exterior rear view mirrors

Styleside Features: ● Inner and outer skin construction to resist damage; Galvanised side panels for rust protection; Curved wall to floor transition to resist dirt and rust catching areas; ● Quickly detachable tailgate with single hand opening operation; ● Provision for stake body extensions; Electrocoat undercoating process with baked enamel finish; ● Rear wheel mudflaps; ● Tethered fuel filler caps

XLT STYLESIDE MODEL

● **Interior Features:** ● Full length carpeting; ● Woodgrained instrument panel

● **Exterior Features:** ● Argent rear step bumper; ● Black tonneau cover; ● Full width brushed aluminium tailgate applique; ● Double door seal; ● XLT Badges; ● Lower bodyside moulding; ● Rope cleats; ● Front air deflector

OPTIONAL EQUIPMENT

Automatic Transmission: Not available on Chassis Cab: ● Ford C6 3-speed automatic with torque converter; Ratios 2.46; 1.46; 1.00:1; Reverse 2.18:1; Front axle ratio 3.54:1; Rear axle ratio 3.55:1; Steering column change with illuminated quadrant

Appearance Equipment: Victoria tu-tone paint treatment (XLT model only)

Convenience Equipment: Air conditioning

Functional Equipment: ● 10Rx15 tyres

1Actual engine flywheel power has been derived from test procedure DIN1020. As there can be variations in the performance ratings of individual units, the above ratings must be taken as being approximate only. (See notes on reverse side hereof.)