

FORD CAPRI
BARCETTA, XR2 AND CLUBSPRINT



HAVE YOU DRIVEN A FORD...LATELY?



CAPRI





**CAPRI AND SOME THOUGHTS
ON THE MEANING OF LIFE.**

It's too easy to leave having a good time until later.
Live for the moment. Seize the day.

Seize it in all its glorious sunshine; in its gentle
breezes.

Seize it when it turns to night; in the company of
a thousand stars and a glowing, watchful moon.

Seize it as dawn emerges and beckons you down
life's unknown byways.

Capri says that there's one very important word in
your vocabulary.

It's *now*.



BARCHETTA



IT'S BELLISSIMA.

Ah, Italy.

That land where passions run hot, but everyone looks cool.

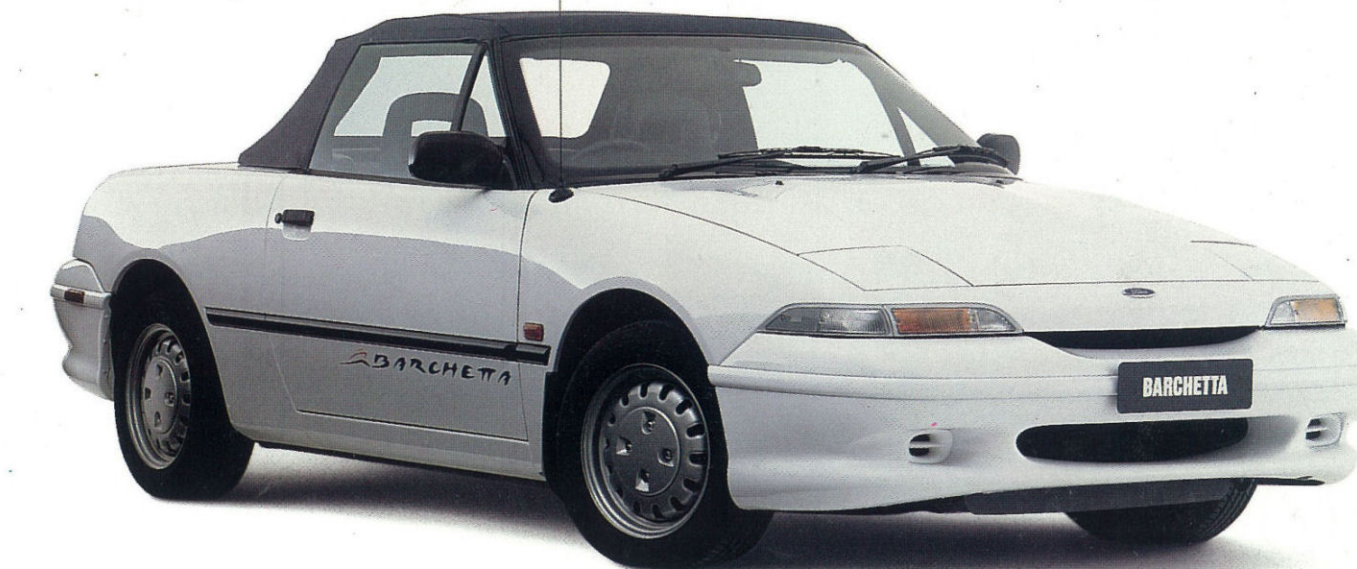
Where you can scarcely turn a corner without tripping over a Vespa. Or being run over by a Ferrari.

studios in Turin.

And Capri Barchetta celebrates this happy association with an added dash of Italian style.

First, there's a snazzy blue top, exclusive to Barchetta.

Or add an optional colour



Where the Mediterranean sun keeps everyone bright and cheerful.

When in Italy, your thoughts turn to beauty, romance...perhaps even to love.

Unless you work for Ford, of course.

Then your thoughts go something like, "Wow, what a great place for a convertible!"

AN ITALIAN INSPIRATION.

Now, not many people know this. But the attractive style of the Ford Capri originated in Italy...at the Ghia design

co-ordinated hardtop.

It's matched to the unique *Bazaar* cloth trim - another exclusive - in a wicked pattern.

And finish it with two exclusive colours, *Verde* or *Bianco*. (Well, OK, like, "Wow, what a great place for a *Reef Green* and *Stark White*... But they look Italian.)

And speaking of looks, take a good look at the curves on that shapely body.

You'll start to feel very *simpatico*.

As they say on the Continent.



Ever since Da Vinci, Italians have been attached to gizmos.

In Barchetta, we've taken this impulse for gadgets and integrated it, ergonomically, into your driving experience.

Electric window controls are handy on the centre console. Electric mirrors are controlled from the centre console, too.

And in case you were wondering where we'd put them, interior lights are cleverly concealed in the rear vision mirror.

The four-speaker AM/FM stereo/cassette-player croons everything Italian from Mantovani to Pavarotti.



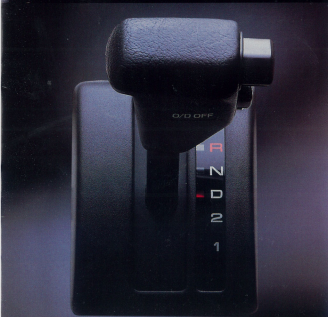
You'll want to cruise off down the autostrada in search of sunny climes, so we've added electronic cruise control.

Sadly, the flip side of being passionate is a tendency to be temperamental.

Rest assured that Barchetta has a down-to-earth Australian side.

For a convertible, it's very, very practical.





Optional 4 speed Automatic Transmission - Barchetta and XR2

Anyone with a Barchetta is bound to make friends, so we made the back seat big enough to take a couple of adults for a hop down to the local cafe.

And if one of them becomes a better friend than you imagined, there's room for a pair of *bambini*.

This very same back seat folds down to accommodate all kinds of Aussie loads - like surfboards, skis and sporting gear.

There's even a holder in the centre console for a couple of *chinottos*.

MOLTO BRAVO.

As befits an Italian, beneath our breast beats a wild and passionate heart. Barchetta is powered by an advanced 1.6 litre DOHC 16 valve EFI engine.

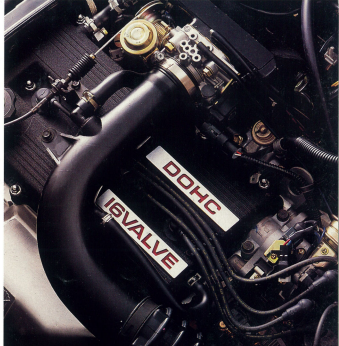
Both transmissions, the standard 5-speed manual or optional 4-speed electronic automatic, are geared for performance.

The engine is tuned for a sporty, satisfying exhaust note.

And with all-round disc brakes and fully independent suspension, Barchetta will make you feel like you're zooming around Monza.

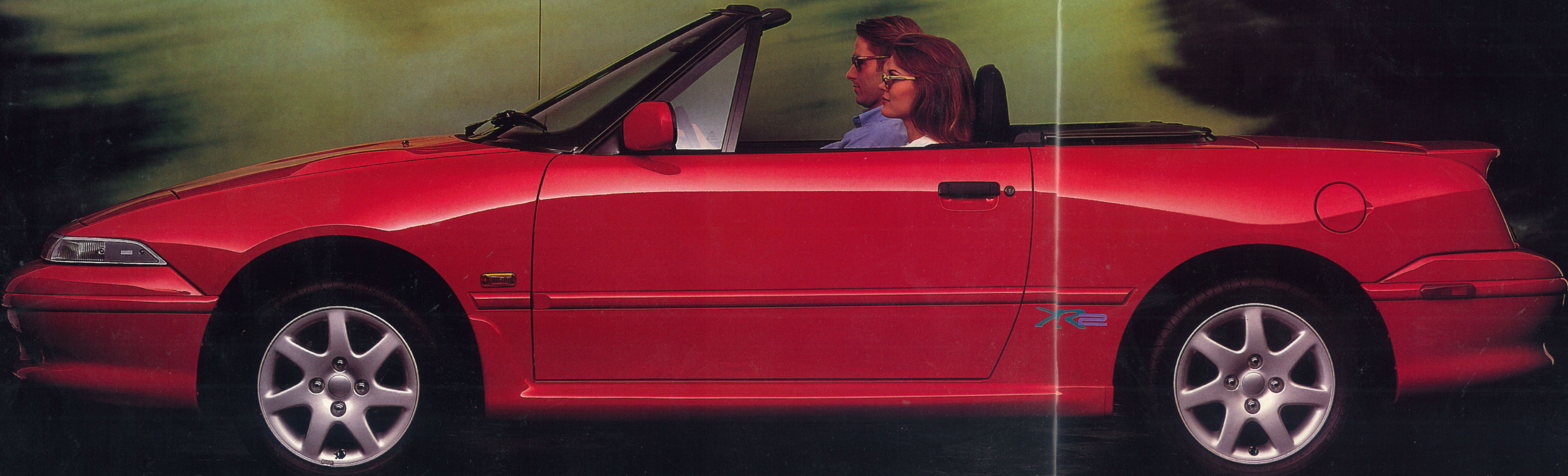
Or even better, it'll make you feel like taking off down the highway and heading into a golden Mediterranean sunset.

To which we might simply add, *arrivederci, buona sera, and have you driven a Ford...lately?*



Optional 14" Alloy Wheel on Barchetta

CAPRI XR2



NEW XR2. XPOSED.

Let's get one thing straight. Capri XR2 is about looks.

It's about the good looks of Capri's shapely body.

It's about how things start looking up when you open the top and soak in the sun.

And—very important—it's about the admiring looks you get from passers-by.

As you can see, there's plenty to look at.

It starts with an elegant black top. Or, if you prefer, a *chic* white one.

The eyes linger on the back spoiler, with its LED brake lamp.



And a final approving glance for the aerodynamic body skirts.

But XR2 is more than just a pretty face (though a mighty pretty face it is).

Those 15" alloy wheels that cut such a dashing figure also keep a firm grip on the road with Michelin XGTV tyres.

That curvy bumper houses driving lights for extra visibility.

And under the bonnet, there's a 1.6 litre DOHC EFI four.

A CAREFREE CRUISE.

Standard on all Capri models is one of the most advanced cruise control mechanisms available on any car made today.





Sophisticated electronics work directly through the engine management computer to ensure speeds are maintained to within a fraction of a kilometre per hour.

On Capris equipped with an electronically-controlled 4-speed automatic, the cruise control mechanism interfaces with the transmission to shift gears when the driver indicates that the speed set in memory is to be resumed.

It makes cruising along in a Capri about as carefree as you can get.

LOOK INSIDE.

Capri XR2 looks pretty good from the inside, too.

A smooth, raven-black interior, with cloth sport seats. Or, as an extra cost option, you can order supple black leather.

There are power door locks controllable by both driver and passenger.

A chime alerts you should you leave your lights





Optional Leather Trim on XR2

XR2 TURBO. LOOK HOW IT GOES.

But things are not always how they look. Take the XR2 Turbo.

Underneath those smooth, stylish lines you'll find a turbocharged engine capable of propelling you to 100 kph in less than 9 seconds.¹

And an intercooler helps you avoid the annoying "turbo-lag" common with many turbocharged engines.

And a lowered suspension helps it hug the ground.

Call it an XR2 with added dash. In more ways than one.

1. These figures were obtained from controlled tests conducted by Ford Motor Company of Australia Limited ("Ford"). Ford does not warrant that you will achieve these performance figures. The actual performance you achieve will depend on many factors, including your driving habits, the prevailing weather and other conditions, the road surface, and your vehicle's equipment, condition and use.





on. And there's a premium four speaker Alpine stereo, ready to plug in an optional boot-mounted CD player.

All these fine elements come together beautifully in a single, shapely package.

And while we're on the subject of coming together, a few words about how Capri is built.

In 1992, the Automotive Industry Authority rated Capri equal first in build quality amongst Australian-made cars.

And since then, it's got even better.

It's a quality you can feel, from bottom to top.

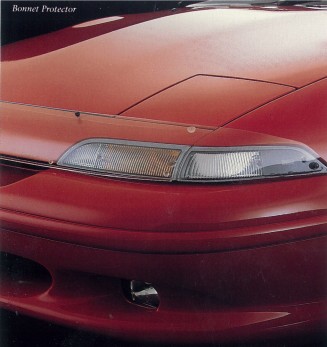


From that sure-footed stance on the road, to that snug-fitting soft top.

LOOK AT THE WORLD AROUND YOU.

A convertible is for sun lovers, but even the most devoted sunlover wants to keep a bit of ozone between him and the sun when he opens up the top.





Floor Mats



That's why the optional airconditioning is completely CFC-free. Capri's excellent fuel economy means that it's doing its bit to make sure the breeze running through your hair is a fresh, clean one.

And while we're on matters green, our brake pads are completely free of asbestos.

**FORD ACCESSORIES.
STRICTLY INDIVIDUAL.**

Your Ford dealer can offer a range of accessories to help personalise your new Ford Capri.

Everything from airconditioning for those extra hot days when you can't put the hood down, to floor mats, to a burglar alarm.

From a bonnet protector to help guard against stone chips, to a remote boot release for extra convenience.

For Barchetta, you can order some of the XR2 standard features. There's central locking, a very popular convenience item. Driving lamps, for those long night drives. XR2 alloy wheels and sporty steering wheel.

Other items for all Capri models include locking petrol cap, chrome exhaust extension and a range of car care products to help you keep your Capri looking like new.

Sports Steering Wheel (Standard on XR2)



Remote Boot Release



CLUBSPRINT



THE SPRINTER RUNS THE FASTEST RACE.

Taut. Lean. Fast. Fit. Quick on his feet. That's a sprinter.

It's also the Capri Clubsprint. Double overhead camshafts, 16 valves for rapid gas flow, electronic

Which means Clubsprint has one of the best power-to-weight ratios around.

The Clubsprint turbo, for example, will reach 100 kph in a mere 8.9 seconds.³

To put this power on the road, Clubsprint sports 16" alloy wheels shod with Michelin ZR16



engine management and, as an option, an intercooled turbo charger.

YOUR PULSE WILL RACE, TOO.

In its normally aspirated form, Clubsprint generates a maximum of 77kW of power, and Clubsprint turbo takes the power level to over 100kW.²

But then, of all athletes, the sprinter has the best power to weight ratio.

low-profile tyres. Clubsprint amplifies its naturally sprightly handling with special TVE sports suspension.

A 5-speed, close ratio gear-box with short throw gear lever helps make Clubsprint agile.

The performance will take your breath away. If its looks haven't taken your breath away first.

2. Power output for the normally aspirated Clubsprint engine peaks at 5750 rpm, and in Clubsprint Turbo peaks at 6000 rpm.
3. These figures were obtained from controlled tests conducted by Ford Motor Company of Australia Limited ("Ford"). Ford does not warrant that you will achieve these performance figures. The actual performance you achieve will depend on many factors, including your driving habits, the prevailing weather and other conditions, the road surface, and your vehicle's equipment, condition and use.



SLEEK. AND POISED.

Classic capote headrests cover a generous storage area behind the seat.

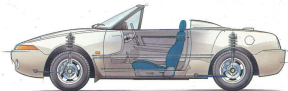
Aerodynamic skirts and fairings sculpt Clubsprint's curves into a road-hugging panther.

Green leather and cloth sports seats are designed to help keep driver and passenger alert on the most exacting drives.

The seats are complemented by the leather-bound MOMO steering wheel.

TICKFORD VEHICLE ENGINEERING.

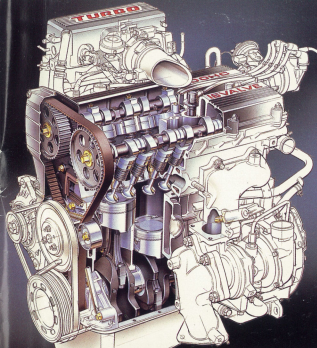
Capri Clubsprint was developed jointly by Ford and Tickford Vehicle Engineering.



Tickford is known in Europe for applying its engineering magic to some of the world's most exotic marques.

Ford is proud to be associated with these engineering maestros. We believe Clubsprint is one of our most appealing collaborations.





**CLUBSPRINT.
CAR OF
THE FUTURE.**

In Clubsprint, we have the ultimate expression of the Capri philosophy.

Enjoy life now. While you can.

And share the moment with that special someone.

For the enthusiast, Capri Clubsprint is the classic two-seater sports car.

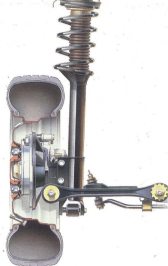
Far too often, collectors have their motoring enjoyment spoiled by the notorious unreliability of so many sporting marques.

But not so with Clubsprint.

Backed by Ford's 24-month, 50,000 Kilometre Express New Vehicle Warranty, Clubsprint offers all the benefits of a new car, with the style and *elan* of a true classic.

After all, a classic sports car is no good if you can't enjoy it.

And with Clubsprint, you'll be enjoying it for years to come.



Optional CD Player - Clubsprint and XR2



FORDCARE. OUR COMMITMENT
TO CUSTOMER SATISFACTION.



Fordcare is a whole range of programs, products and services designed to make Ford owners the most satisfied motor vehicle owners in Australia.

Fordcare starts when you enter an Authorised Ford Dealer's showroom, it's there when you take delivery of your new Ford and it continues for the life of the vehicle. That means first class service for you at all times, and nothing less than the best for your Ford from our extensive network of Authorised Ford Dealers.

As motor vehicles become more sophisticated and technically advanced, specialised care and maintenance become more vital.

Fordcare provides the technical equipment and expertise to keep your Ford operating in peak condition. The well-being of your Ford is supported by these additional warranties:

THE FORD 24 MONTH/50,000KM
EXPRESS NEW VEHICLE
WARRANTY.



Covers your Ford against defects in factory materials or

workmanship for the first 24 months or 50,000 km - whichever comes first. When fitted at time of vehicle purchase, Ford Approved Accessories are also covered by the Ford 24 month/50,000 km Express New Vehicle Warranty.

FIVE YEAR PERFORATION
CORROSION WARRANTY.

Covers the original vehicle's body against perforation corrosion for the first five years of its life.

LIFETIME SERVICE WARRANTY.



Covers the majority of part replacements, including labour, carried out by your Authorised Ford Dealer after the expiration of the initial Ford 24 month/50,000 km Express New Vehicle Warranty. It means you will only ever pay once for such repairs under normal driving conditions.

LIFELONG PANEL WARRANTY.



Covers replacement of outer body panels against

perforation corrosion for the life of the vehicle. Further information on these warranties may be obtained from your Authorised Ford Dealer.

FORD CUSTOMER
ASSISTANCE CENTRE.



You will find our Customer Assistance Representatives responsive to your needs.

They can assist with any general enquiry about your vehicle that calls for special information beyond the scope of your Authorised Ford Dealer.

Customer Assistance Centre - Phone 008 333 306 (TOLL FREE), in Melbourne phone 359 7023.

FORD LEASING.



Both finance and operating leases are available to approved applicants through Ford Credit Australia Limited. Enquire at your Authorised Ford Dealer.

All optional equipment referred to in this brochure is available at extra cost unless otherwise stated.

This brochure is designed to provide you with a general introduction to the Ford Products (including available optional equipment) referred to, and should be read in conjunction with the latest specification sheet. Because of changes in conditions and circumstances Ford* reserves the right, subject to all applicable laws, at any time, at its discretion, and without notice, to discontinue or change the features, designs, materials, colours and other specifications and the prices of their products, and to either permanently or temporarily withdraw any such products from the market without incurring any liability to any prospective purchaser or purchaser. The latest specification sheet should be referred to for information on the availability, ordering and use of optional equipment. Always consult an Authorised Ford Dealer for the latest information with respect to features, specifications, prices, optional equipment and availability before deciding to place an order.
*FORD MOTOR COMPANY OF AUSTRALIA LIMITED. (A.C.N. 004 116 223) Registered Office: 1735 Sydney Road, Campbellfield, Victoria 3061, Australia. Printed July, 1993.



HAVE YOU DRIVEN A FORD...LATELY?