

FORD FALCON XR SERIES



HAVE YOU DRIVEN A FORD...LATELY?

LONG LIVE THE SPORTS

SEDAN AND WAGON!

For some drivers the major criteria by which they judge the worth of a car is how sportingly it performs. Yet even the most spirited driver has to accept the necessity for passenger room; indeed, for some only the extra space provided by a wagon will do.

For such drivers Ford and Tickford created the Falcon XR6 sedan and wagon and the Falcon XR8 sedan.

Combining high performance characteristics with family car practicality is a task the Falcon XR6 and XR8 handle brilliantly.

Hardly surprising really, when you consider Ford's illustrious history of building sports sedans that have won countless hearts and races.

Some have achieved legendary status. And the latest models have all the credentials to join that exalted company of classic cars.

The priority is on providing exhilarating performance from advanced 6-cylinder and V8 engines, agile and predictable handling from a sports suspension system plus the security of Ford's Anti-lock Braking System (ABS).

In Falcon XR6, the power source, as the name suggests, is a 6-cylinder engine.

It is, in fact, a special version, developed by Tickford, of Ford's much acclaimed 4.0 litre 6-cylinder engine. Falcon XR8 offers smooth, efficient 5.0 litre V8 power.

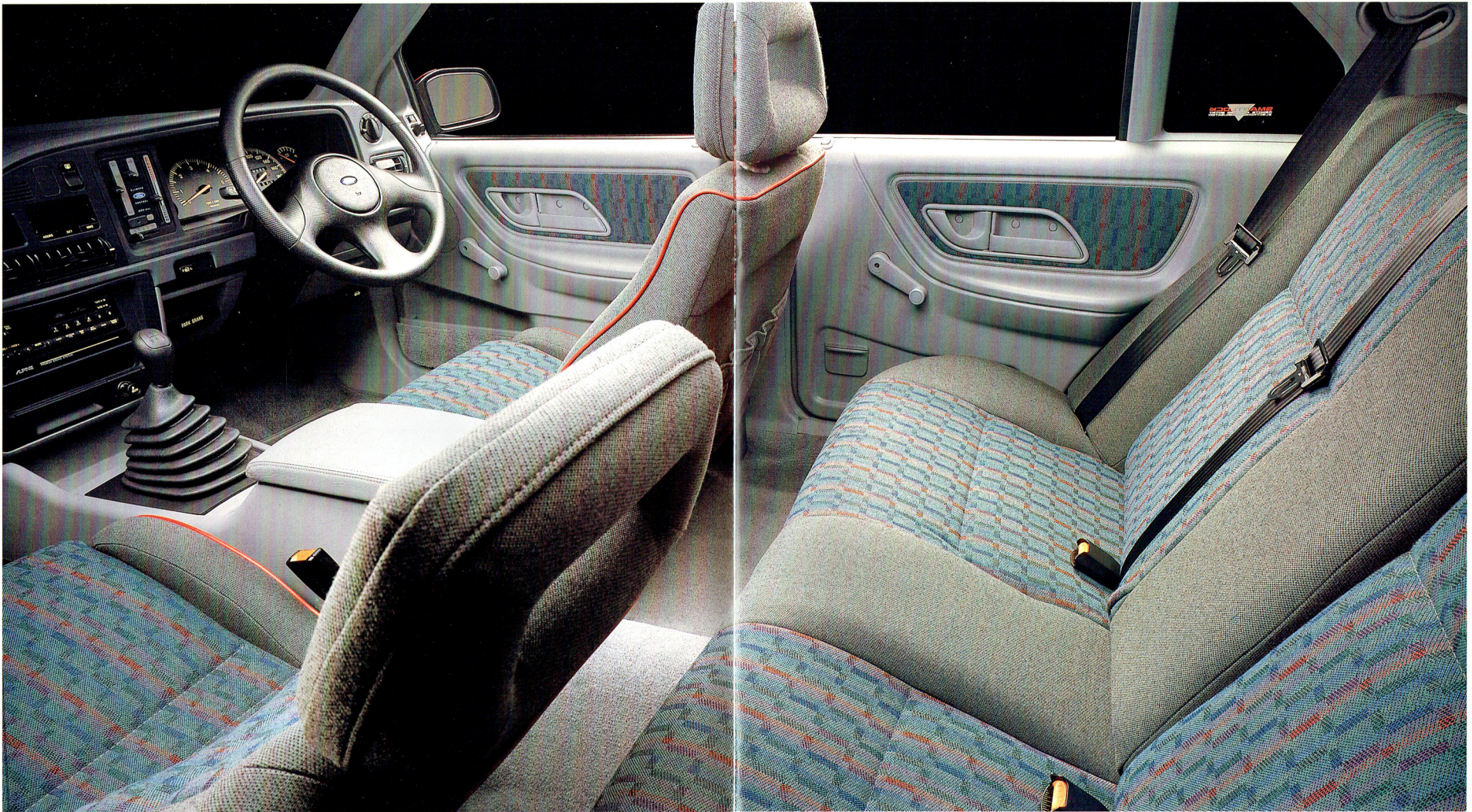
Whichever model you choose, you'll find a level of comfort and refinement beyond that of many conventional sedans and wagons.

And, of course, XR6 and XR8 are styled like no ordinary vehicles, with distinctive badging, spoiler, sports wheels, thoughtful colour co-ordination and sports seating.

The Falcon XR6 and XR8 are the family cars you can drive mild or you can drive wild.

The choice is up to you.





TAKE A SEAT.

While the Falcon XR6 and XR8 are a rare treat to drive, inside they treat you to uncommon luxury. Because they are Falcons, there's plenty of leg, shoulder and head

room for the driver and up to four adult passengers.

Driver and front seat passenger are comfortably and securely held in deeply sculptured sports seats, stylishly designed and offering

superb lateral support. They feature adjustment both fore and aft and backrest recline.

As is appropriate in such cars, the driver receives special attention with adjustable lumbar support, seat

height adjustment and a foot rest. Head restraints are also adjustable and of see-through design.

The seats are upholstered in a hard-wearing, comfortable fabric trim specially selected to reflect

the sporting nature of these vehicles. It co-ordinates with the remainder of the interior. The rear seat features a handy 60/40 split folding facility. It enables either side to be folded down to accommodate long or awkwardly

shaped items in the boot, while still providing accommodation for one or two rear seat passengers.

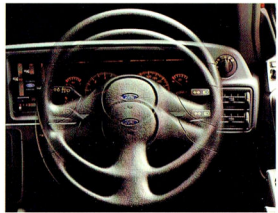
For luxury and versatility with a sporting personality, take a seat in Falcon XR6 or XR8.

CONTROL

YOUR POWER.

As you sit behind the sporty steering wheel of Falcon XR6 or XR8, all the instrumentation comes readily to the eye whilst controls are close at hand.

Twin lever combinations on the steering column control turn indicators and washer/wipers whose functions include demand wash/wipe and an intermittent setting. The steering column itself is adjustable for both height and reach.

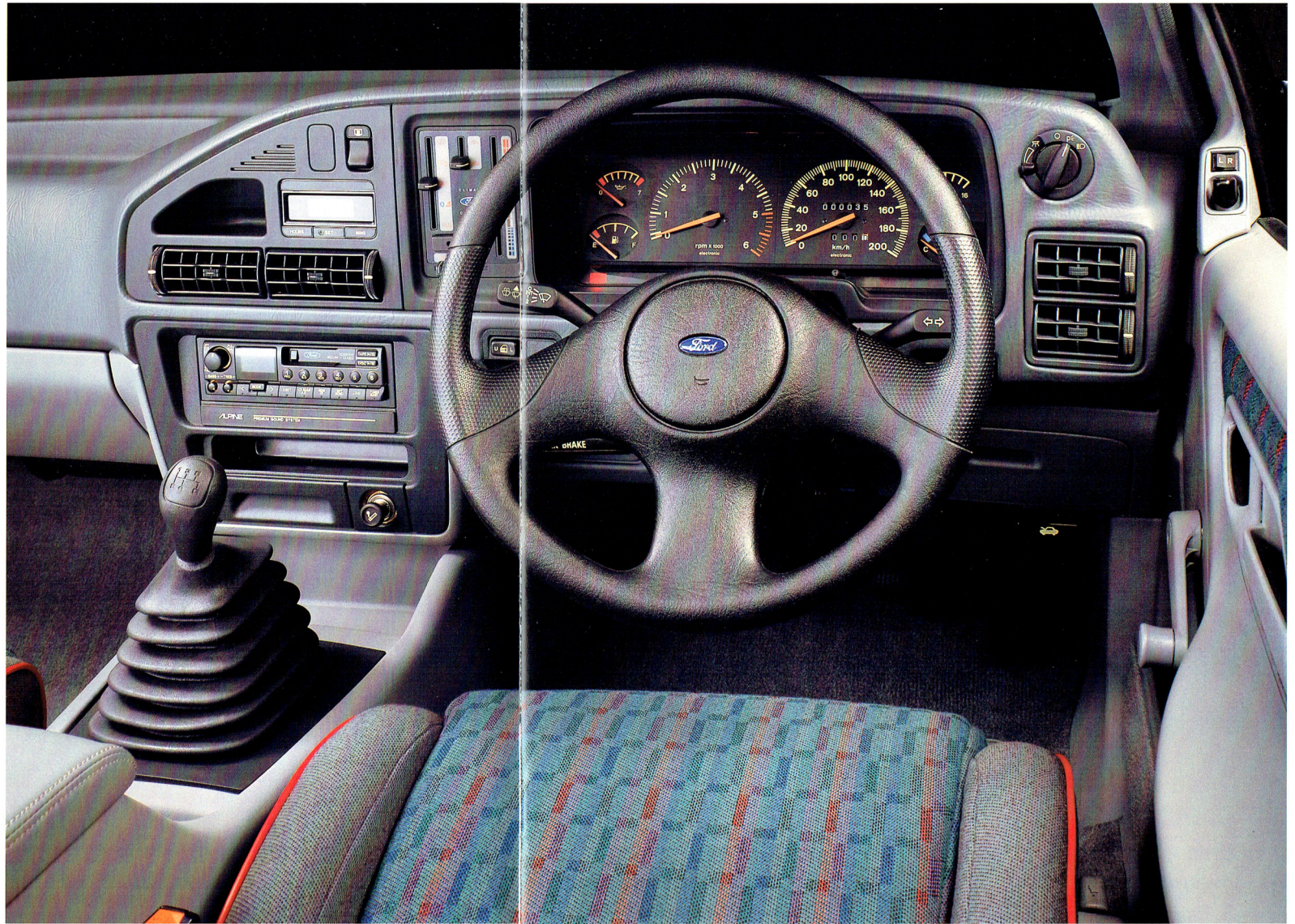


Other controls include electrically-operated exterior mirrors, power door locks and heater adjustment.

Large speed and tachometer dials are surrounded by gauges for fuel, oil pressure, engine coolant temperature and battery voltage.

In a strip below the instrument cluster are warning lights for nine separate mechanical functions.

A sophisticated Deluxe Sound System is included. The heart of



the system is an AM/FM stereo radio and cassette player featuring Dolby,TM music search, auto-scan, memory storage and eight individual

speaker elements for all-round sound.

The unit is protected by security coding that renders it useless to thieves. True music lovers though

will opt for the state of the art Alpine Premium Sound System with optional CD player. It offers studio quality sound with a 260 Watt out-

put through nine individual speaker elements including satellite tweeters and sub-woofer.

The Premium Sound System

includes control switches and circuitry to enable the Ford/Alpine boot-mounted remote changer CD player to be fitted later if desired.



FALCON XR6 WAGON.

ROOM WITH ZOOM.

Wheels magazine has described the Falcon XR6 sedan as "the quickest Aussie car you can buy" (October 1992). Which must make the XR6 wagon the fastest Aussie

wagon. For here you have a wagon that is in every respect as distinctive and as fully equipped as the XR6



sedan. But with the generous load capacity that has always been a Falcon strength.

How much space?

With the rear seat folded down there's 2622 litres of cargo capacity. When the rear seat is up you still

have a considerable 1466 litres. A beautiful set of numbers by any assessment.

And there remains the option of adjusting the flexible 60/40 split rear seat backrest to open up just the amount of space you need while



carrying one or two passengers in the rear. So you get the space you want.

And the XR6 badge means you get the sports suspension and instrumentation, the potent 4.0 litre engine and the security of the standard ABS braking system.



Ford has always had an on-going commitment to continuously improving vehicle safety. Over successive generations of vehicles, Ford has incorporated an increasing number of safety features into Falcon XR6 and XR8.

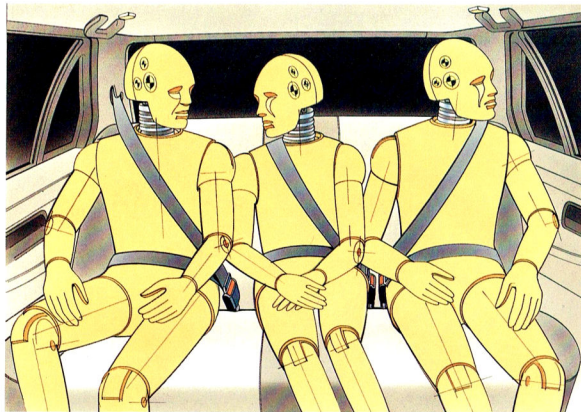
Primary safety features include

engines with sufficient power not to be found wanting when extra response is called for. Steering and suspension systems that are precise and predictable.

Powerful braking systems, that include four wheel discs and an Anti-lock Braking System (ABS).

But because, even though it may not be you or your car's fault, collisions do occur, Falcon's secondary safety features are so important.

The list includes integral vehicle crumple zones and strengthened passenger compartments, special front seat belt lockers and inertia



Falcon XR6 and XR8 provide the security of inertia reel lap/sash seat belts for all occupants, including the rear centre passenger.

reel seat belts with reinforced mountings front and rear, including the centre rear seat.

In fact, Ford takes safety so seriously that Falcon not only meets but significantly exceed many of the safety standards laid down. Of all the features to be found on your new Ford, the ones concerning safety are the ones we hope you never have to think about. But if you do, it's good to know that the engineers at Ford and Tickford have done a lot of thinking for you. And here are some of their latest thoughts.

ANTI-LOCK BRAKING SYSTEM.

IMPROVED CONTROL FOR GREATER SAFETY.

The standard four sensor, three channel Anti-lock Braking System

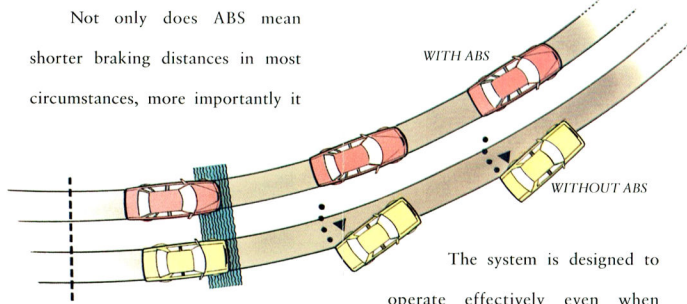
(ABS) on Falcon XR6 and XR8 is designed to give you greater control over your vehicle in extreme or emergency braking situations.

To prevent your brakes from locking, sensors at each wheel are connected to a microprocessor which

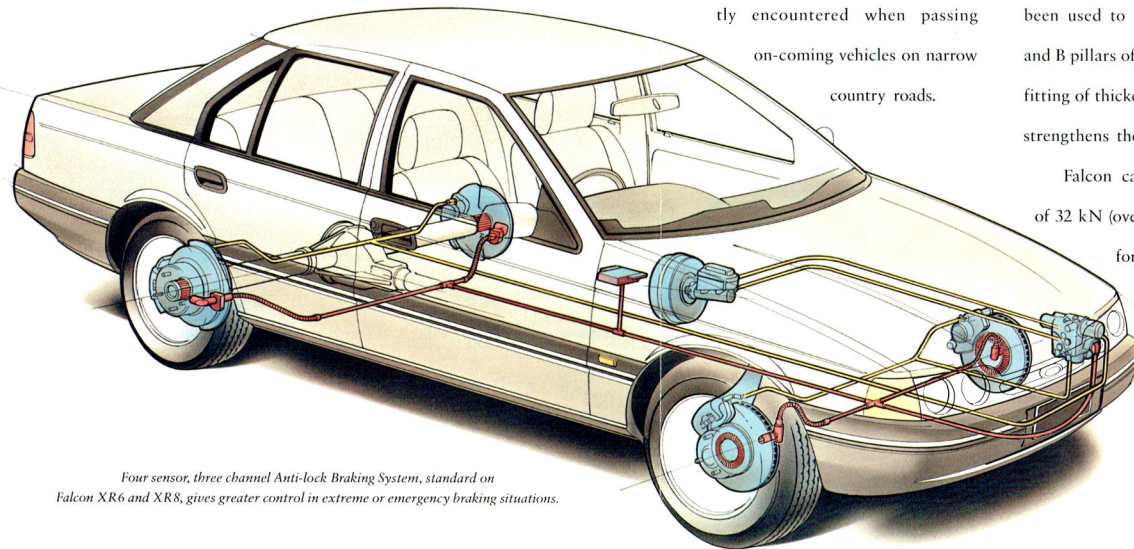
detects when a wheel is about to lock.

When triggered, a system of electronically-controlled valves between the brake booster and the wheel open and close several times per second to enable maximum braking power just short of the point at which lock-up would occur, to be applied to each wheel.

Not only does ABS mean shorter braking distances in most circumstances, more importantly it



Demonstrates reactions of vehicle equipped with and without ABS in a potential brake lock-up situation.

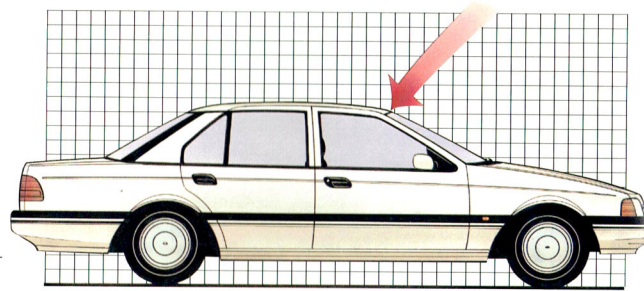


Four sensor, three channel Anti-lock Braking System, standard on Falcon XR6 and XR8, gives greater control in extreme or emergency braking situations.

means you still have full steering control so hazards can be more easily avoided by a combination of braking and steering.

The sophisticated ABS has software specially programmed for Australian road conditions, including a special 'deep pulse' program designed for gravel roads.

The system is designed to operate effectively even when different wheels are on different types of surface; a situation frequently encountered when passing on-coming vehicles on narrow country roads.



Epoxy resin reinforcement of A and B pillars plus thicker front and side glass has strengthened the passenger compartment.

IT'S TOUGH AT THE TOP.

The passenger safety cage in Falcons has been significantly strengthened by improving its roof crush strength, making the intrusion beams in the doors stronger and by making the roof a structural member of the passenger compartment.

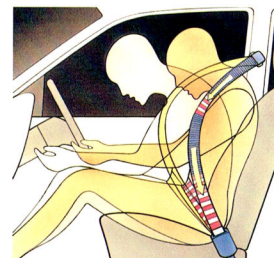
An epoxy resin composite has been used to reinforce both the A and B pillars of the vehicle, while the fitting of thicker front and side glass strengthens the area still further.

Falcon can withstand a force of 32 kN (over 3 tonnes) in testing for the US roof crush resistance standard FMVSS 216.

BELT UP FOR SAFETY.

Seat belts usually don't rate much attention until you need them in an emergency.

Falcon XR6 and XR8 help to protect all occupants, including the centre rear passenger, with lap/sash inertia reel seat belts.



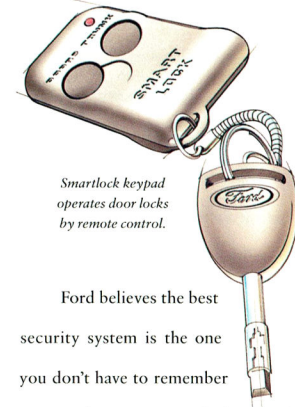
Belt locker device minimises payout of seat belt webbing under extreme conditions.

The front seat belts have a special locking device that instantly minimises any seat belt webbing payout in extreme circumstances.

Also, sections of the front seat belt have 'popable' stitches to control precisely the movement of the wearer in a collision.

MAJOR ADVANCES IN VEHICLE SECURITY.

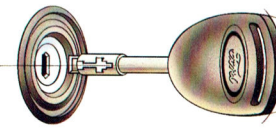
So that Falcon attracts no more than admiring looks from persons other than the owner, the latest technology has been applied in the area of vehicle security.



Smartlock keypad operates door locks by remote control.

Ford believes the best security system is the one you don't have to remember to switch on. So Ford developed Smartlock, a security system that's an integral part of your Falcon's operating systems. It works by automatically immobilising the vehicle when the ignition key is removed.

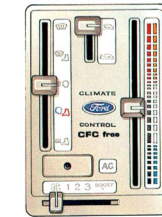
Before it will enable the engine to start, the Smartlock computer module demands a set of precise codes that are only released by the high security 'Tibbe' ignition key. So even the most determined thief would find it virtually impossible to start the car. Also, the profile and barrel of the ignition lock have been specifically



Doors, ignition and boot are all protected by high security 'Tibbe' locks.

designed to frustrate even the most sophisticated attempts at theft.

Recessed door lock buttons help to guard against unauthorised entry. For your convenience, Smartlock also provides keyless access to the vehicle via a remote control keypad which operates the standard power door locks and boot lock.



SAFER FOR THE ENVIRONMENT TOO.

As you know, Chloro Fluoro Carbons (CFCs) have been identified as a risk to upper atmospheric ozone. The optional factory fitted air conditioning system in Falcon uses CFC-free refrigerant. This Ford initiative has resulted not only in a more environmentally friendly system but also a more effective one.

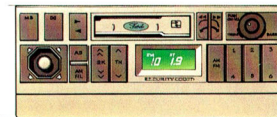
The CFC-free air conditioning system includes outlets at the back

of the centre console for the comfort of rear seat passengers.

SECURITY CODED RADIO.

The vehicle's radio and cassette player is protected by another Ford anti-theft measure.

A special security code renders the unit useless to thieves.



The radio and cassette player is protected by a programmed security code rendering the unit useless to thieves.

You'll discover that the security systems in Falcon XR6 and Falcon XR8 represent more than the latest technology. It's technology applied in a most intelligent way. See your Ford Dealer soon for a detailed presentation and demonstration.

IDENTIFICATION CODING OF VEHICLE COMPONENTS.

Every Ford is allocated a unique Vehicle Identification Number (VIN) which distinguishes the vehicle from all others on the road.

6FPAAAJGWANL46173

The Vehicle Identification Number (VIN) distinguishes your vehicle from all others on the road.

Major vehicle components are permanently marked with the VIN as another way of deterring theft.

THE MOST POTENT

FALCON SIX EVER.

For Falcon XR6, the engineers at Tickford Vehicle Engineering have developed a high output version of Ford's advanced 4.0 litre 6-cylinder engine. It delivers 161 kW of power and produces 365 Nm of torque.

That's performance of truly V8 proportions.

The performance is the result of a substantial engine redesign. This involved revisions to the alloy cylinder head to help the engine breathe better, resulting in faster, more effective gas flow.

The overhead camshaft was modified and new engine manage-

ment programming was installed to monitor and control the Sequential Multipoint Electronic Fuel Injection. The engine is also equipped with a 'low back pressure' exhaust system which reduces gas velocity losses and improves performance.

While this may be the most powerful six cylinder engine ever offered with Falcon, it's the smooth and quiet way in which the power is produced that's so impressive.

To help keep the engine operating at peak efficiency, and with

optimum fuel efficiency, Ford's EEC4 Engine Management System incorporates a single highly advanced microprocessor that controls both engine and automatic transmission. This system, known as Integrated Powertrain Control, uses a single chip to reduce electronic complexity and increase reliability. The end result is the co-ordinated monitoring and control of sixteen important engine functions, including fuel/air mixture, air intake and coolant temperature, fuel flow and ignition timing.

V8 ALL THE POWER

YOU NEED.

Today's 5.0 litre Falcon V8 engine is the inheritor of a proud tradition of Ford V8s. And it is a worthy successor to those illustrious predecessors. It's the engine that powers the Falcon XR8 sedan.

Equipped with Sequential Multipoint Electronic Fuel Injection, which is sequenced with engine valves to inject fuel at precisely the right moment for optimum efficiency, the Falcon V8 is designed to develop a

stirring 165 kW at 4500 rpm. With tremendous torque figures of 388 Nm at 3000 rpm. Yet this engine isn't about just raw power. It is a product of technical excellence that delivers its copious quantities of energy smoothly and effectively.

To keep your engine operating at peak efficiency, Ford's EEC4 Engine Management System monitors and controls sixteen important engine functions, including fuel/air mixture, air intake and coolant temperature, fuel flow and ignition timing.

And enormous engineering efforts have been poured into making this engine one of the most fuel-efficient V8s ever made.

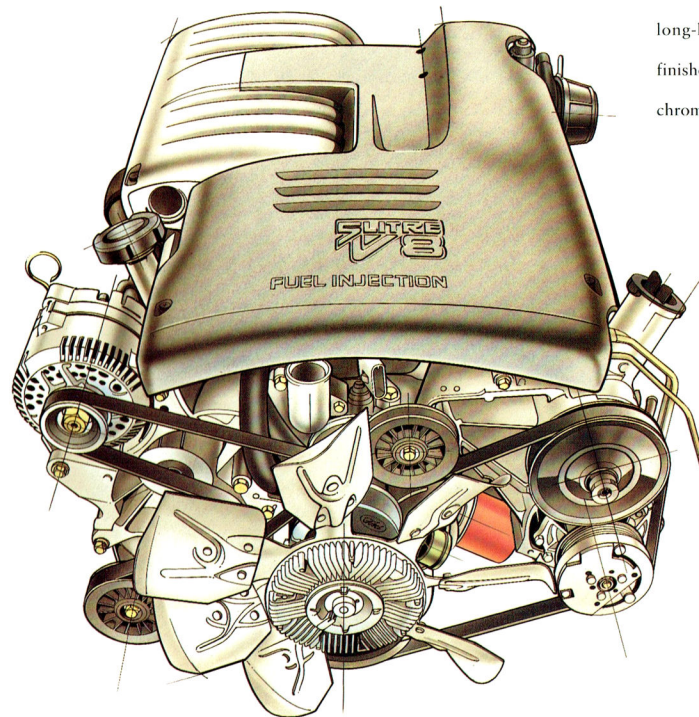
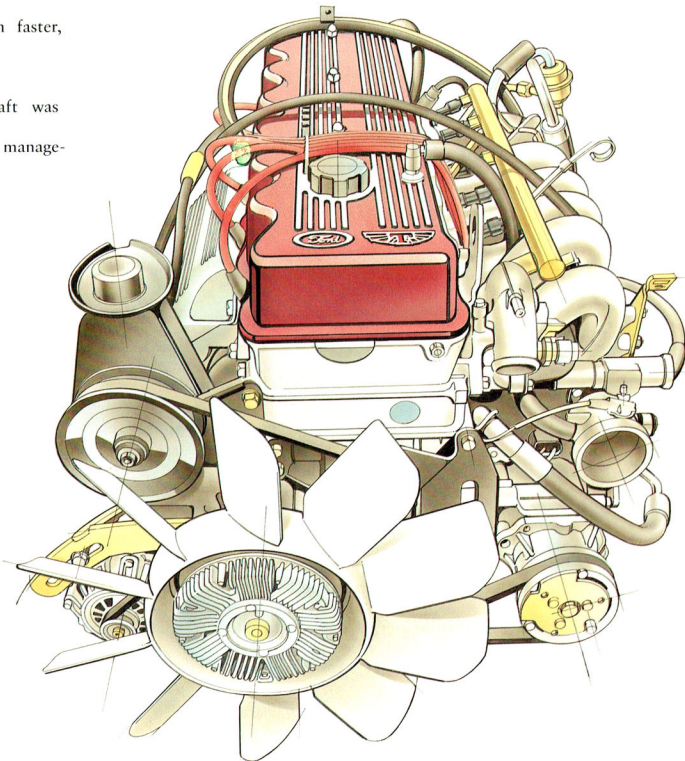
For efficient breathing, air intakes have been totally redesigned for low restriction. A mass air flow sensor is provided for greater metering accuracy by the Electronic Engine Control Unit.

Efficiency is also the watchword for the exhaust system. A semi-dual design is utilised featuring 63 mm pipes to reduce the back pressure.

The system is constructed of long-lasting stainless steel and finishes with the flourish of a chrome-plated tailpipe.

HIGH PERFORMANCE 4.0 MULTI-POINT EFI.

Bore & stroke mm	92.26 x 99.3
Cylinder head	OHC aluminium alloy
Displacement cc	3984
Compression ratio	90:1
Fuel injection	Multipoint
Fuel System	Elect. fuel inject, controlled by EEC4 Engine Management System
Fuel	Regular Unleaded
Max Power DIN kW/rpm	161/4600
Max Torque Nm/rpm	365/3650



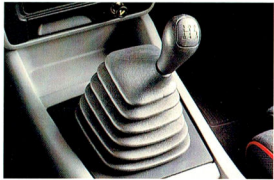
5.0 LITRE V8.

Bore & stroke mm	101.6 x 76.2
Cylinder head	OHV Cast iron
Displacement cc	4942
Compression ratio	90:1
Fuel injection	Sequential multipoint
Fuel System	Elect. fuel inject, controlled by EEC4 Engine Management System
Fuel	Regular Unleaded
Max Power DIN kW/rpm	165/4500
Max Torque Nm/rpm	388/3000

GETTING INTO GEAR.

Falcon XR6 and XR8 put their power to work through a smooth and positive five-speed manual transmission. For drivers who prefer an automatic transmission Falcon's advanced, electronically controlled four-speed unit is available as an option.

This silky smooth Australian-made electronic transmission,



produces outstanding fuel economy with quiet operation. Fuel-saving features include a power/economy switch changeable by the driver to suit driving conditions and a torque converter with 'lock-up clutch'.

ADVANCED TECHNOLOGY BOOSTS ECONOMY.

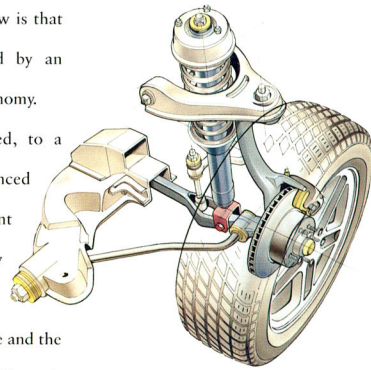
The smooth flow of power from our 40 litre multipoint EFI 6-cylinder and V8 engines is bound to impress

anyone. What's nice to know is that the power is accompanied by an impressive rate of fuel economy.

Fuel economy is aided, to a large degree, by the advanced EEC4 Engine Management System and its single, highly advanced microprocessor that controls both the engine and the automatic transmission. Through the co-ordinated monitoring and control of sixteen important engine functions, including precise fuel metering, the system achieves significant fuel savings.

SENSATIONAL SUSPENSION.

As you'd expect in cars with such high performance characteristics, great attention has been paid to the areas of suspension, steering and brakes.



At the front, you'll find the advanced SLALS (short and long arm, long spindle) suspension system. Rear suspension is via Watts Link. The ride height is lowered to improve the feel of the car. This also has the effect of making these vehicles look fast even when they're standing still!

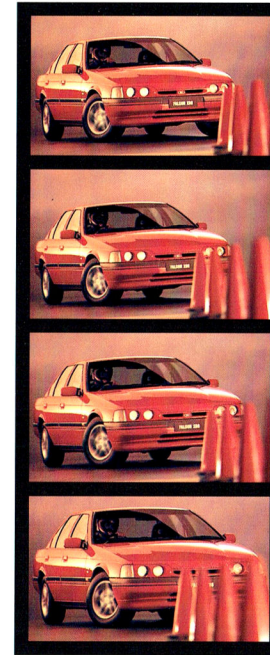
Spring rates and upper and lower rear suspension bushes are refined and shock absorbers feature nitrogen gas pressurisation.

A short jounce bump limiter is designed to give better ride and directional stability on rough surfaces.

The rear suspension geometry is set for enhanced cornering ability.

Other suspension mount features are designed to give greater durability and quietness of operation.

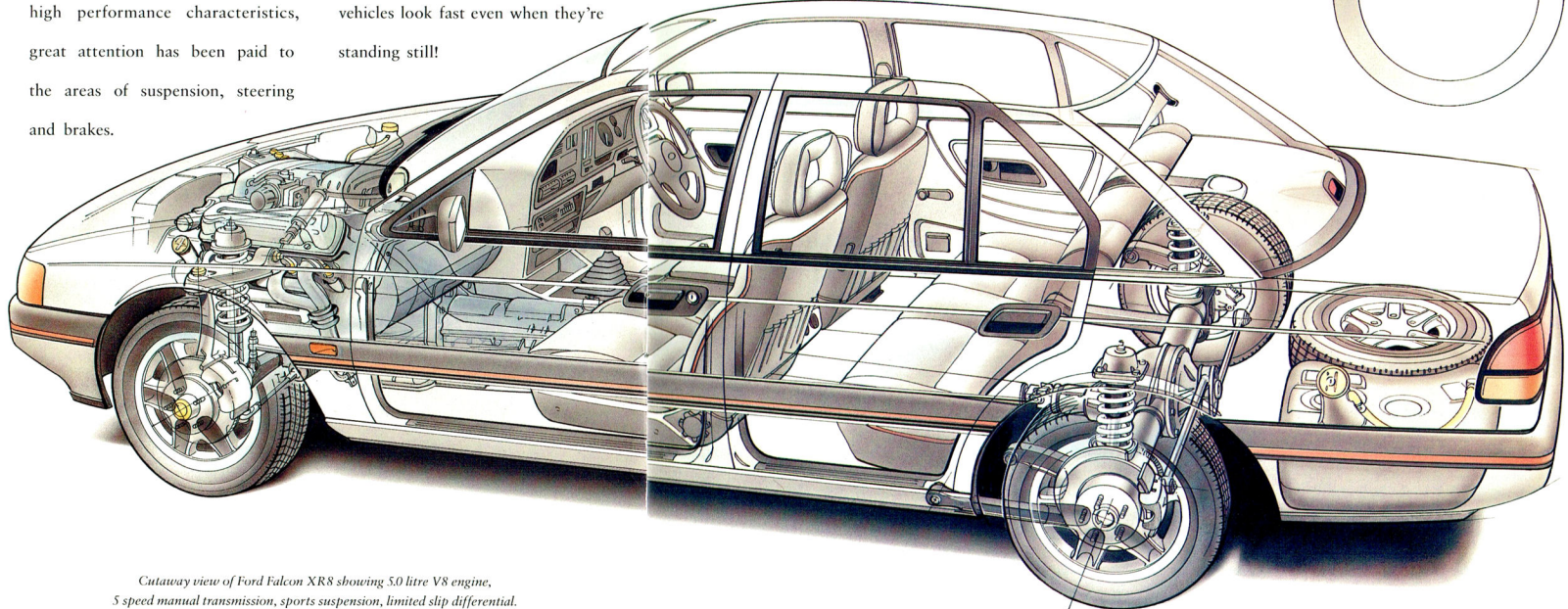
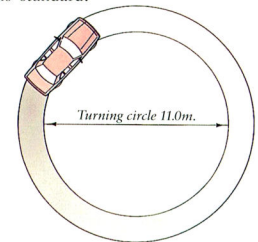
For rapid steering response, the variable steering ratio starts at a quick 18.5:1, which means a sharper, faster reacting system. And for



excellent 'feel' there are rigid steering rack mountings. Steering is via a power-assisted rack and pinion.

The list of performance features doesn't stop there. On vehicles equipped with either automatic or manual transmissions you'll also find a traction-enhancing limited slip differential fitted.

To stop the show, there are power-assisted disc brakes on all four wheels, with semi-metallic front pads. Anti-lock Braking System is standard.



Cutaway view of Ford Falcon XR8 showing 5.0 litre V8 engine, 5 speed manual transmission, sports suspension, limited slip differential.



**SPORTS SEDAN WITH
THE LOT TO GO.**

Falcon XR8 has the lot; and it goes very swiftly. Proving that when it comes to developing abundant quantities of power and torque, a V8

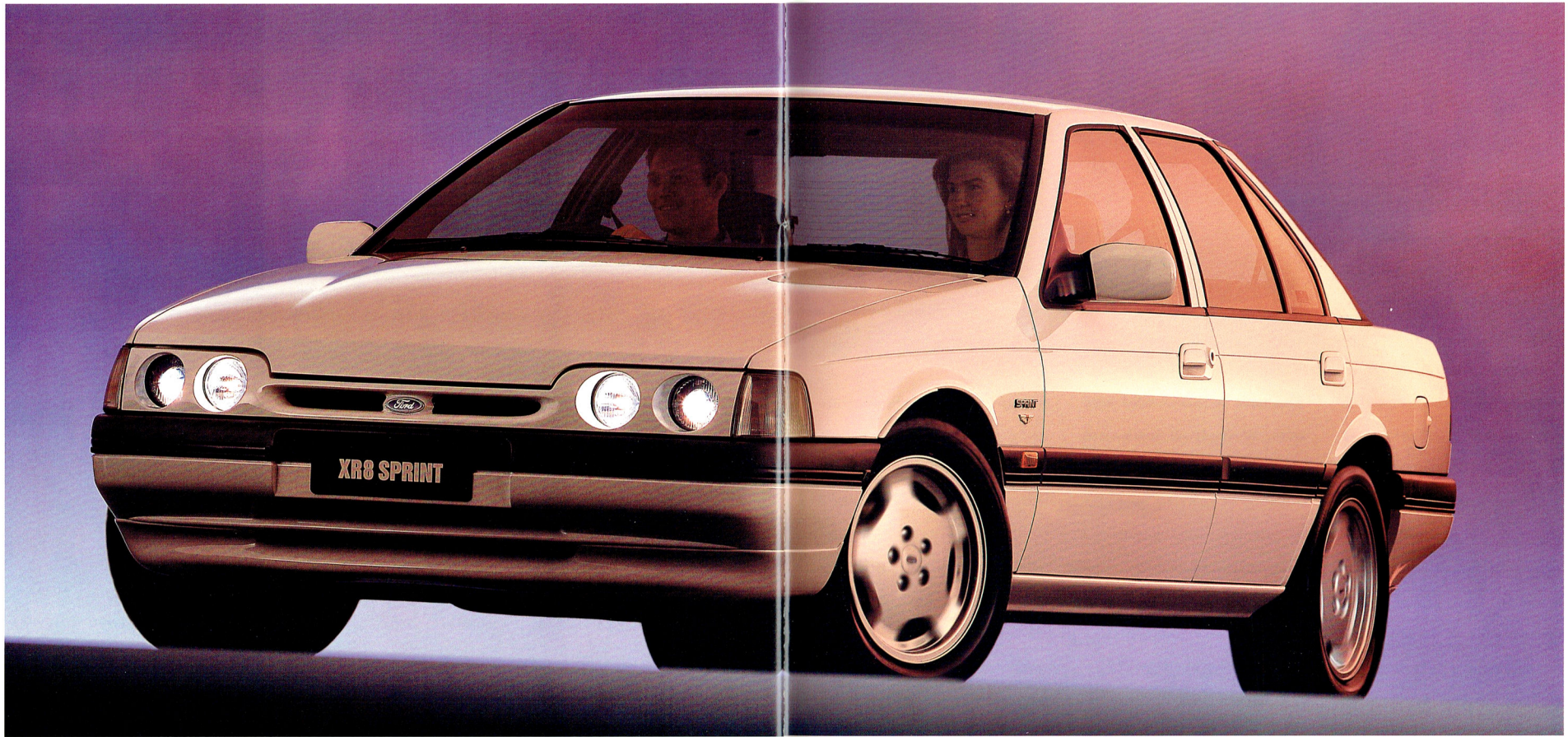
engine is on its own. There's no doubt the XR8 stands as proof that the designers and engineers at Ford share your enthusiasm for driving. And your ideas of what a sports sedan should look like and how it should perform.

XR8's stand-out styling incorporates quad headlamps which link this exciting car with Ford sporting vehicles worldwide. So, as an XR8 owner, you join a 'club' of international sporting car enthusiasts.

Today's XR8 sports a new generation of alloy road wheels and a distinctive grille which set the XR series Falcons apart from all others on the road. The XR Falcons sit lower on the road and with the even lower

aerodynamic air dam look kind of, well, mean. But you wouldn't let a little thing like that bother you, would you? The fact is, in Ford's long tradition of sporting vehicles, the XR6 and XR8 are indeed the

sports sedans of the nineties. For those of you who refuse to take their everyday driving without a generous lashing of chilli sauce, you'll find the XR Falcons have the lot, and are ready to go.



TRAVEL LUXURIOUSLY BUT
CARRY PLENTY OF STICK.

The stick, should you need it, comes in the form of the warmed over 5.0 litre Cleveland V8 engine. An engine of a similar heritage to the one that powers the latest Falcon GT.

This is not a Falcon GT. But it is the closest thing you'll find to one: the Falcon XR8 Sprint.



It takes the XR8 to another level of performance, luxury and exclusivity.

Matched to the 5.0 litre V8 engine is a quick-shifting 5-speed

manual transmission or optional electronic 4-speed auto, the same transmissions as fitted to Falcon GT.

The modified Tickford sports suspension is complemented by big, wide 16 x 7 inch alloy road wheels and 225 x 50 tyres.

The precise and predictable handling is aided by rack and pinion power steering and the ABS braking

system. Inside, the XR8 Sprint has all the XR8 equipment described earlier



in this brochure. The XR8 Sprint, however, gains the luxury of sports

seats with genuine leather bolsters, upgraded door trim plus a leather wrapped MOMO steering wheel for the ultimate in comfort and control.

In keeping with the exclusive nature of the XR8 Sprint, body colour choice is limited to a range of 5 colours. Take a look, have a drive. We think you'll make a *quick* decision.

KEEP YOUR OPTIONS OPEN.

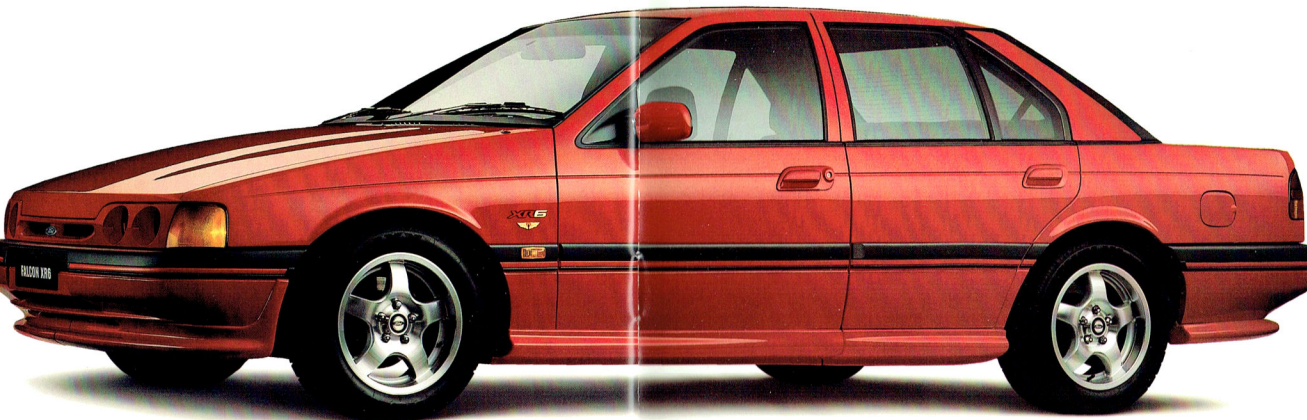
Your new Falcon XR6 or XR8 is engineered and equipped to perform to exacting standards while delivering high standards of comfort and convenience. But for the driver who wants to make his new car even more personalised, special options are available.

These Ford options are specifically made for Ford vehicles from high quality materials and because they're installed before delivery you're assured of proper fit and compatibility. And Ford options are fully covered by the Ford 24 month/50,000 km Express New Vehicle Warranty.

SUPER SPORTS

SUSPENSION.

To complement the higher road adhesion of 16" wheels and tyres, this Super Sports Suspension includes further refinements to the bushes and steering to optimise the grip and balance of these high performance series vehicles. The Super Sports



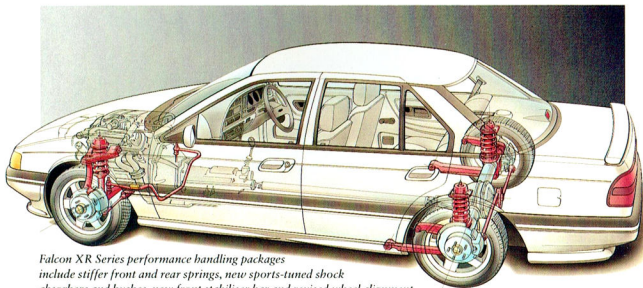
Suspension is recommended when fitting 16" wheels and tyres however they can be ordered independently.

MOMO STEERING WHEEL.

Leather covered sports steering wheel designed for enhanced comfort, control and vehicle 'feel'. (Available with or without cruise control.)

BODY STYLING KIT.

Includes side skirts, front and rear aprons for the bumper bars and a raised deck lid spoiler with integrated high mounted stop light.



Falcon XR Series performance handling packages include stiffer front and rear springs, new sports-tuned shock absorbers and bushes, new front stabiliser bar and revised wheel alignment.

Improves aerodynamic performance and gives your new car a sensational appearance.

16" WHEELS AND TYRES.

Aggressive 16" x 7" five spoke alloy wheels fitted with high performance Michelin 225/50 ZR 16" tyres. Designed to fully utilise vehicle handling and provide a bolder appearance.

1200 kg RATED TOW PACK.

Specifically designed for Falcon. 1200 kg capacity. Includes the towbar

with painted tongue, wiring harness, 7-pin connector, reinforcement brackets, and transmission oil cooler for automatic transmissions.

HEAVY DUTY TOW PACK.

For those who already have a 2100 kg or 2300 kg Load Distributing Hitch and who want a compatible towbar on their new Ford. Features Hayman Reese Heavy Duty Towbar (2300 kg rated capacity), trailer wiring kit, revised turn signal flasher, heavy duty brake pads (where not fitted as standard), transmission oil cooler for automatic transmissions, and a 1200 kg rated capacity plug-in tow ball mount.

2300 kg TOW PACK.

2300 kg rated capacity.*

Features renowned Hayman Reese

*Subject to State and Territory regulations.

CAR ALARM.

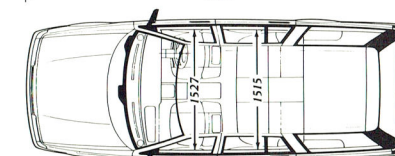
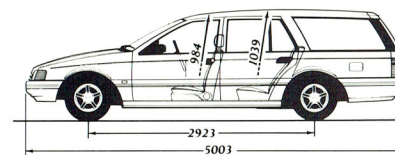
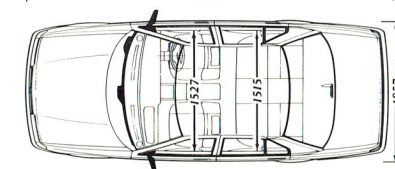
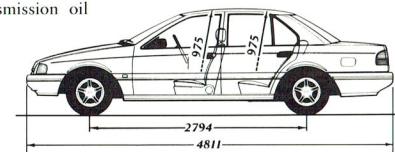
Available as a dealer fitted Ford accessory. Sophisticated and highly sensitive alarm system designed to help protect your new Ford.

Features include remote active arming, auto arming selectable, auto arming, re-arming if no entry after 60 seconds, starter cut out, shock detector, L.E.D. display.

Heavy Duty Towbar and Load Distributing Hitch, trailer wiring kit, revised turn signal flasher, heavy duty brake pads (where not fitted as standard), and transmission oil cooler for automatic transmissions.

SUNROOF.

Precision crafted electric glass sunroof fully imported from Germany. Versatile operation as a tilted vent to assist ventilation, and partially or fully open to increase your enjoyment of the great outdoors. Automatic 'pop-up' wind deflector minimises wind noise and buffeting.



All dimensions are shown in mm.



FALCON XR6 UTE.

IT'S SPELT W-I-L-D!

Ford and Tickford Vehicle Engineering have become renowned for adding more daily adrenalin to the lives of people who love cars.

Now they bring this promise of greater stimulation and more driving satisfaction to everyone who loves a ute, or, for that matter, *needs* a ute.

Enter Falcon XR6 Ute.

Sired by the ground-breaking Falcon Longreach S, inspired by the Tickford XR6 4.0 litre engine that develops over 200 horse power, equipped like no ute that's ever gone before.

On the outside, there's plenty to tell the world this ute is anything but ordinary. Distinctive quad headlamps, body colour front

bumper and Tickford and XR6 badges.

Body colour electric side mirrors, 15 x 7 inch alloy road wheels and 205 x 65 sports tyres complete the picture.

Inside, you enjoy all the spoils of ute driving *par excellence*.

Body hugging sports seats, sports instrumentation (including tach), 2-channel 4-speaker stereo



radio/cassette player, power steering, amongst others.

A free flow exhaust, 4 wheel disc brakes, lively 3.45:1 rear axle ratio and LSD, and, of course, *the* engine with standard 5-speed manual transmission, combine to provide an impressive rate of response in any situation. If you've been missing the joy of driving lately, come and make your day.

SUPERB SPORTING

CARS BY

APPOINTMENT.

When you get right down to all the finer details, you come up with a list of excellent reasons for choosing an XR series Falcon.

1. Analogue sports instrumentation feeds back the things you need to know.

2. Premium sound system takes your beat to the street (optional).

3. 60/40 split fold rear seat. Who said sports sedans aren't practical?

4. Driver's seat adjusts for height, reach and recline.

5. Ventilation system with 4 speed settings. Cool.

6. Front door map pockets provide useful storage space.

7. Digital clock, but, no, a stop watch is not included! Yet.

8. Remote control for boot lid and fuel filler lid.

9. Electrically operated remote control mirrors, in which other vehicles seem to always keep getting smaller.

10. New generation alloy road wheels.



1.



2.



3.



4.



5.



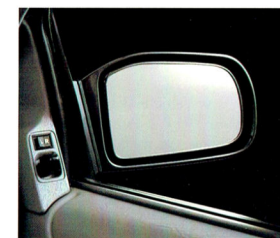
6.



7.



8.



9.



10.

FORDCARE.

OUR COMMITMENT

TO

CUSTOMER

SATISFACTION.



Fordcare is a whole range of programs, products and services designed to make Ford owners the most satisfied motor vehicle owners in Australia.

Fordcare starts when you enter an Authorised Ford Dealer's showroom, it's there when you take delivery of your new Ford and it continues for the life of the vehicle.

That means first class service for you at all times, and nothing less than the best for your Ford from our extensive network of Authorised Ford Dealers.

As motor vehicles become more sophisticated and technically advanced, specialised care and maintenance become more vital.

Fordcare provides the technical equipment and expertise to keep your Ford operating in peak condition.

The well-being of your Ford is supported by these additional warranties:

THE FORD

24 MONTH/50,000KM

EXPRESS NEW VEHICLE

WARRANTY.



Covers your Ford against defects in factory materials or workmanship for the first 24 months or 50,000 km whichever comes first.

When fitted at time of vehicle purchase, Ford Approved Accessories are also covered by the Ford 24 month/50,000 km Express New Vehicle Warranty.

FIVE YEAR PERFORATION

CORROSION WARRANTY.

Covers the original vehicle's body against perforation corrosion for the first five years of its life.

LIFETIME SERVICE

WARRANTY.



Covers the majority of part replacements, including labour, carried out by your Authorised Ford Dealer after the expiration of the initial Ford 24 month/50,000 km Express New Vehicle Warranty.

It means you will only ever pay once for such repairs under normal driving conditions.

LIFELONG PANEL

WARRANTY.



Covers replacement of outer body panels against perforation corrosion for the life of the vehicle. Further information on these warranties may be obtained from your Authorised Ford Dealer.

FORD CUSTOMER

ASSISTANCE CENTRE.



You will find our Customer Assistance Representatives responsive to your needs. They can assist with any general enquiry about your vehicle that calls for special information beyond the scope of your Authorised Ford Dealer.

Customer Assistance Centre phone 008 333 306 (TOLL FREE), in Melbourne phone 359 7023.

FORD LEASING.



Fully maintained operating leases are available to approved applicants through Ford Credit Australia Limited. Enquire at your participating Authorised Ford Dealer.

This brochure is designed to provide you with a general introduction to the Ford Products (including available optional equipment) referred to, and should be read in conjunction with the latest specification sheet. Because of changes in conditions and circumstances Ford reserves the right, subject to all applicable laws, at any time, at its discretion, and without notice, to discontinue or change the features, designs, materials, colours and other specifications and the prices of their products, and to either permanently or temporarily withdraw any such products from the market without incurring any liability to any prospective purchaser or purchaser. The latest specification sheet should be referred to for information on the availability, ordering and use of optional equipment. Always consult an Authorised Ford Dealer for the latest information with respect to features, specifications, prices, optional equipment and availability before deciding to place an order. *FORD MOTOR COMPANY OF AUSTRALIA LIMITED. (A.C.N. 004 116 223) Registered Office: 1735 Sydney Road, Campbellfield, Victoria 3061, Australia. Printed Sept. 1993.



HAVE YOU DRIVEN A FORD...LATELY?

Standard Equipment: Falcon XR6 Sedan and Wagon Falcon XR8 Sedan

FEATURES:	Falcon XR6 Sedan	Falcon XR6 Wagon	Falcon XR8 Sedan
MECHANICAL*			
5.0 litre OHV engine with multi-point electronic fuel injection			●
High performance 4.0 litre OHC engine with multipoint electronic fuel injection	●	●	
5 speed manual transmission	●	●	●
Electronic engine control (EEC 4) system	●	●	●
Short and long arm, long spindle front suspension	●	●	●
Watts link rear suspension	●	●	●
Hotchkiss rear suspension		●	
Sports suspension	●		●
Front stabiliser bar	●	●	●
Rear stabiliser bar	●	●	●
Four wheel disc brakes	●	●	●
Power assisted rack and pinion steering	●	●	●
Limited slip differential	●	●	●
Anti-lock braking system (ABS)	●	●	●
* For available optional equipment see reverse side			
EXTERIOR			
Body coloured exterior door handles	●	●	●
Body coloured front and rear bumpers with red inserts	●	●	●
Body coloured valance	●	●	●
Body coloured front spoiler	●	●	●
Unique body coloured radiator grille and air dam	●	●	●
Wide section grey bodyside protection mouldings with red inserts	●	●	●
Black rear applique	●	●	●
P205/65 HR15 Michelin steel belt radial ply tyres	●	●	●
15" x 7.0" new generation alloy road wheels	●	●	●
Quad round halogen headlamps	●	●	●
Colour keyed foldaway exterior rear view mirrors with electric remote control	●	●	●
Body coloured rear spoiler	●	●	●
Two speed front windscreen wipers with intermittent setting, demand wash/wipe and demand wipe feature	●	●	●

FEATURES:	Falcon XR6 Sedan	Falcon XR6 Wagon	Falcon XR8 Sedan
EXTERIOR (continued)			
Rear intermittent wiper with demand wash/wipe and auto wiper, activated when in reverse gear with front wipers operating		●	
Dual jet windscreen washers	●	●	●
Rear window demister with timed automatic switch off feature	●	●	●
Full tinted laminated windscreen with tinted band	●	●	●
Tinted side and rear glass	●	●	●
Rear glass ceramic sunshade	●	●	●
High mounted stop lamp	●	●	●
INTERIOR			
"Smart Lock" electronic immobilisation and keyless entry system	●	●	●
High security locking system featuring "Tibbe" locks on doors, ignition and boot/liftgate, recessed door lock buttons and strengthened steering column lock housing	●	●	●
Soft feel steering wheel	●	●	●
Adjustable rake and reach steering column	●	●	●
Prismatic day/night interior rear view mirror	●	●	●
Vinyl covered sunvisors	●	●	●
Large centre console with centre armrest	●	●	●
Seats are trimmed in Olympiad cloth trim with coordinated mottled plain bolster	●	●	●
Driver and passenger seat fore and aft adjustment	●	●	●
Driver and passenger seat infinitely adjustable recline	●	●	●
Driver's seat lumbar support and height adjustment	●	●	●
Doors are trimmed in vinyl with cloth covered armrest insert	●	●	●
Driver and passenger seat back map pockets	●	●	●
60/40 split fold down rear seat back rest	●	●	●
Sport seats with separate side bolsters	●	●	●

FEATURES:	Falcon XR6 Sedan	Falcon XR6 Wagon	Falcon XR8 Sedan
INTERIOR (continued)			
See through/adjustable front head restraints	●	●	●
Driver's left footrest	●	●	●
Moulded cloth covered headlining	●	●	●
Carpeted passenger and luggage compartment floor	●	●	●
Interior light operated by all doors	●	●	●
Luggage compartment lamp	●	●	●
Adjustable instrument panel illumination	●	●	●
Ignition lock illumination	●	●	●
Door mounted rear ashtray	●	●	●
Illuminated and lockable glovebox	●	●	●
Warning lights: high beam, rear window demister, turn signal/hazard, alternator, lights on, park brake on, low oil pressure	●	●	●
Additional warning lights: washer fluid low, radiator fluid low, fuel low and high temperature	●	●	●
Auto transmission power mode indicator light	●	●	●
Gauges: speedometer, odometer, tripmeter, fuel gauge, water temperature gauge and tachometer	●	●	●
Oil pressure and battery voltage gauges	●	●	●
Power door locks with remote keyless entry	●	●	●
Childproof rear door locks	●	●	●
Remote fuel filler release	●	●	●
Remote boot release	●	●	●
Coat hooks	●	●	●
Integrated grab handles	●	●	●
Front inertia reel seat belts with "belt lockers", rear inertia reel seat belts for all passengers	●	●	●
Deluxe electronic tuning AM/FM stereo radio/cassette with eight individual speaker elements, auto reverse, auto scan memory storage and security code feature	●	●	●
Four speed fan boosted ventilation with front footwell ducts and rear seat ducts	●	●	●

HAVE YOU DRIVEN A FORD ... LATELY?

FORD FALCON XR



Specifications

FORD FALCON XR6 SEDAN AND WAGON AND XR8 SEDAN

Engine	High Performance 4.0 litre Multipoint EFI	5.0 litre Multipoint EFI
Bore & Stroke mm	92.26 x 99.3	101.6 x 76.2
Cylinder Head	OHC aluminium alloy	OHV cast iron
Displacement cc	3984	4942
Compression Ratio 9:0.1	9:1	
Fuel System	Electronic fuel injection controlled by EEC 4 engine management system	
Fuel Required	Regular unleaded	Regular unleaded
Max Power DIN kW/rpm	161/4600	165/4500
Max Torque Nm/rpm	365/3650	388/3000

Suspension

Front	Rear
<ul style="list-style-type: none"> Short and Long Arm, Long Spindle (SLALS) design Single rate coil springs Twin tube telescopic shock absorbers mounted co-axially within the coil spring Stabiliser bar 	SEDAN: <ul style="list-style-type: none"> Rigid axle 4 trailing arms with Watts Linkage Single rate coil springs Twin tube telescopic shock absorbers mounted co-axially within the coil spring Stabiliser bar WAGON: <ul style="list-style-type: none"> Rigid axle Leaf springs Twin tube telescopic shock absorbers

Sports Handling Suspension incorporates updated coil springs with lower ride height and updated shock absorbers on XR6 and XR8.

Brakes

FRONT: Power assisted ventilated disc : 287mm
REAR: Power assisted disc : 287mm

Dimensions	Falcon XR6 Sedan	Falcon XR6 Wagon	Falcon XR8 Sedan
Exterior (mm)			
Overall length	4811	5003	4811
Overall height	1368	1483	1368
Overall width	1857	1857	1857
Wheelbase	2794	2923	2794
Front track	1554	1554	1554
Rear track	1533	1533	1533
Front overhang	878	878	878
Rear overhang	1139	1202	1139
Interior (mm)			
Front headroom	975	984	975
Front legroom	1080	1080	1080
Front shoulder room	1527	1527	1527
Front hiproom	1475	1475	1475
Rear headroom	975	1039	975
Rear legroom	988	988	988
Rear shoulder room	1515	1515	1515
Rear hiproom	1245	1245	1245
General			
Kerb weight (kg)	1528	1566	1573
Luggage capacity (litres)	453	1466 (e)	453
		2622 (f)	
Fuel tank capacity (litres)	68	72	68
Min turning circle (m) - diameter	11.0	11.4	11.0

Transmission/Ratios

	5 Speed Manual V8	5 Speed Manual HP 6 Cylinder	4 Speed Auto 6 Cylinder & V8
Gear Ratios			
1st	2.95	3.25	2.39
2nd	1.94	1.99	1.45
3rd	1.34	1.29	1.00
4th	1.00	1.00	0.69
5th	0.73	0.72	—
Reverse	2.76	3.15	2.09
Final Drive Ratio	3.27	3.45	3.27 XR8 3.45 XR6

Selected Fuel Consumption Data

Engine/Transmission/Bodystyle	City Cycle (l/100km)	Highway Cycle (l/100km)
5.0 L MP EFI manual XR6 Sedan	14.0	9.0
5.0 L MP EFI auto XR6 Sedan	14.5	9.0
4.0 L HP EFI manual XR6 Sedan	12.5	7.8
4.0 L HP EFI auto XR6 Sedan	13.0	8.0
4.0 L HP EFI manual XR6 Wagon	12.5	8.0
4.0 L HP EFI auto XR6 Wagon	13.0	8.5

These figures obtained from controlled laboratory tests conducted by Ford Motor Company of Australia Limited to Australian Standard AS2877 and are provided to assist you in comparing the fuel consumption of Falcon with other vehicles. **The actual fuel consumption you achieve will depend, however, on many factors, including your driving habits, the prevailing conditions and your vehicle's equipment, condition and use.**

Options

Optional Equipment (Options are at extra cost unless otherwise stated)

Option	Falcon XR6 Sedan	Falcon XR6 Wagon	Falcon XR8 Sedan
Car Alarm (b)	OPT	OPT	OPT
Air conditioning	OPT	OPT	OPT
Alpine Premium Sound System	OPT	N/A	OPT
CD player with boot mounted 6 disc cartridge (c)	OPT	N/A	OPT
1200 kg Rated Tow Pack (a)	OPT	OPT	OPT
Heavy Duty Tow Pack (a)	OPT	OPT	OPT
2300 kg Tow Pack (a)	OPT	OPT	OPT
Prestige paint (d)	OPT	OPT	OPT
Cruise control	OPT	OPT	OPT
Sunroof	OPT	N/A	OPT
Super sports suspension	OPT	N/A	OPT
Momo steering wheel	OPT	OPT	OPT
Body Styling Kit	OPT	N/A	OPT
16" alloy wheels with P225/50 ZR16 tyres	OPT	N/A	OPT

Engine/Transmission Combinations

Engine/Transmission	Falcon XR6 Sedan	Falcon XR6 Wagon	Falcon XR8 Sedan
4.0 litre MP EFI 5 speed manual	STD	STD	N/A
4.0 litre MP EFI 4 speed auto	OPT	OPT	N/A
5.0 litre MP EFI 5 speed manual	N/A	N/A	STD
5.0 litre MP EFI 4 speed auto	N/A	N/A	OPT

Towing Capacity (Subject to applicable legislation and tow bar capacity)

Transmission	Ford Approved 1200 kg Rated Tow Pack	Ford Approved Heavy Duty Tow Pack (with 1200 kg Rated Ball Mount)	Ford Approved 2300 kg Tow Pack (with Load Distributing Hitch)
5 Speed Manual	1200 kg *	N/A	N/A
4 Speed Auto	1200 kg *	1200 kg *	2300 kg *

* Without the Ford approved Tow Pack, the towing capacity is 500 kg.

STD Standard equipment. OPT Optional at extra cost.
N/A Not available.

About this specification sheet. This sheet is designed to provide you with selected specification data for the Ford Products which have been described in a general way in the relevant brochure. Because of changes in conditions and circumstances Ford* reserves the right, subject to all applicable laws at any time, at its discretion, and without notice to discontinue or change the features, designs, materials, colours and other specifications and the prices of its products, and to either permanently or temporarily withdraw any such products from the market without incurring any liability to any prospective purchaser or purchaser. Because of variations which occur in manufactured products, all capacities, measurements, dimensions and weights quoted in the relevant brochure and this specification sheet should be taken as approximate only. Always consult an Authorised Ford Dealer for the latest information with respect to features, specifications, prices, optional equipment and availability before deciding to place an order.

*FORD MOTOR COMPANY OF AUSTRALIA LIMITED
(A.C.N. 004 116 223)
Registered office:
1735 SYDNEY ROAD, CAMPBELLFIELD, VICTORIA, 3061.

Footnotes

(a) The Tow Packs are fitted to the vehicle by or for Ford and provide the specified towing capacities when used in accordance with the instructions in the Ford Owners Manual. Each Tow Pack consists of:

- Tow bar
- Hitch and/or ballmount
- Wiring harness with 'flat' 7-pin electrical connector
- Towing turn signal flasher
- Supplementary transmission cooler (automatic transmissions only)
- Heavy duty brake pads (where not fitted as standard)

Note: Other items such as the caravan or trailer braking system, tow ball, safety chains, etc, are required for the attachment of a caravan or trailer to the towbar or hitch, are not supplied as part of the Tow Pack and must be purchased at extra cost or be supplied by the purchaser of the vehicle.

An accessory towbar is also available from your Authorised Ford Dealer, fitting to be arranged by the purchaser. If the vehicle is to tow a gross weight of more than 500kg the appropriate Ford Approved Tow Pack must be fitted. Consult your Authorised Ford Dealer for the latest information with respect to the specifications and the availability of the accessory towbar. The actual towing capability and performance of a vehicle will depend on many factors including the suitability of the caravan, trailer, etc, the condition of the vehicle, the vehicle load, the vehicle specifications, weather conditions, road gradient, terrain and other prevailing conditions.

(b) The alarm is available as a Dealer fitted option.

(c) Available only in conjunction with Premium Sound System.

(d) Consult the Ford colour selector or your Authorised Ford Dealer to determine which colours are available in the prestige paint range.

(e) With rear seats upright.

(f) With rear seats folded down.

HAVE YOU DRIVEN A FORD... LATELY?

PRINTED OCTOBER 1993

