

# FORD FAIRMONT AND FAIRMONT GHIA



**HAVE YOU DRIVEN A FORD...LATELY?**

#### APPROACH WITH

#### CONFIDENCE.

Advancement in life is measured by the quality and importance of the decisions you make, both personal and professional.

One of the most important is your choice of car.

When you've earned the right to ask for something more, you've earned the right to drive Fairmont Ghia.

The Ghia badge is a symbol of automotive excellence long recognised and valued by discerning drivers. Because any Ford vehicle that proudly displays the Ghia crest is acknowledged as being the best of its kind.

When your decisions reflect your appreciation of value as well as quality, Fairmont Ghia will naturally play a prominent part in your thinking.

Today's Fairmont Ghia not only maintains the prestige pedigree of cars with that name, it further refines its reputation for luxury driving.

#### AN EXECUTIVE PACKAGE.

Fairmont Ghia is brilliantly balanced to satisfy both the driver in you and the seeker after luxury. Its road performance is enhanced by a four litre multipoint electronic fuel injected engine. And if even that is not enough, the ultimate power of Ford's V8 is available as an option.

To handle that power there is a suspension system so responsive, it has won praise from even some of Australia's severest critics.

And there are improved safety features including special seat belt lockers, a full lap/sash inertia reel seat belt for the rear centre passenger, strengthened body pillars and Ford's sophisticated Anti-lock Braking System (ABS) fitted as standard equipment.

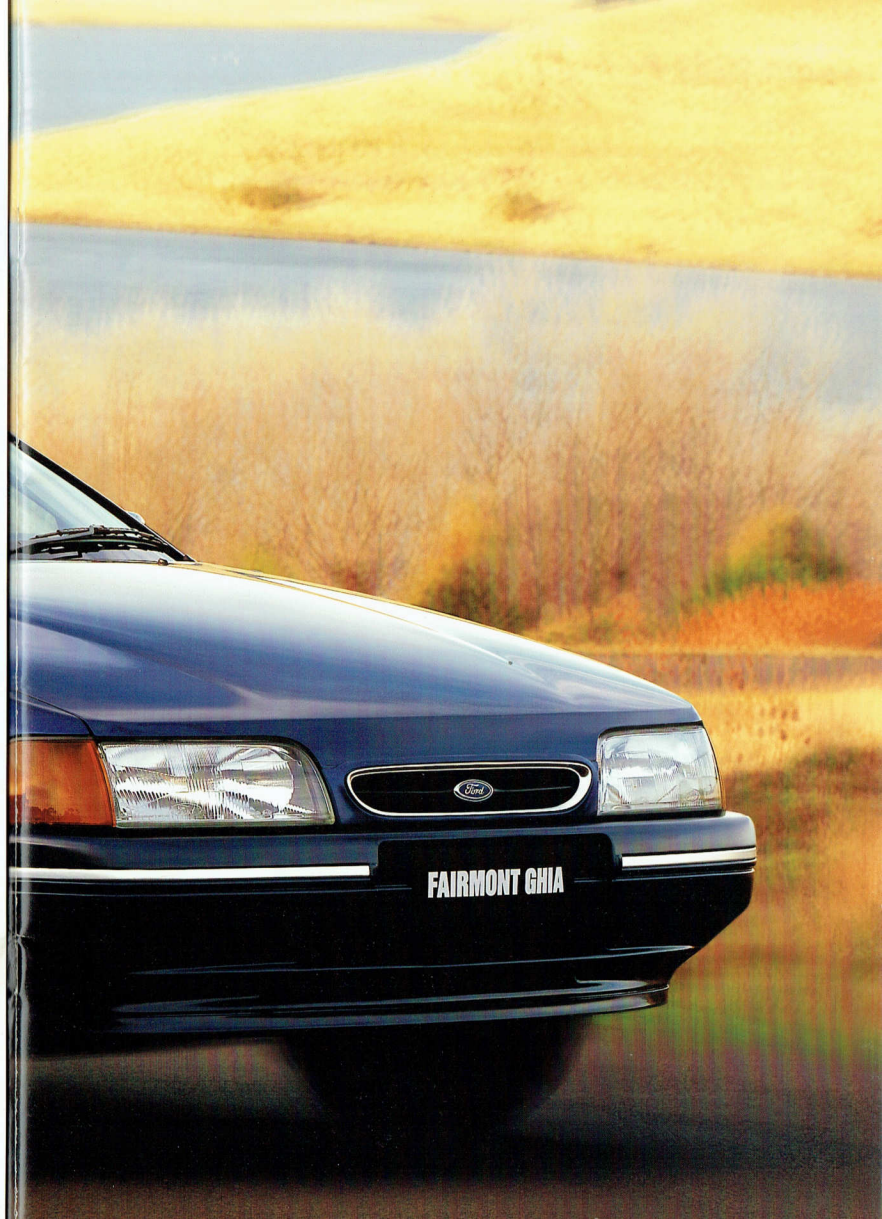
Whilst interior comforts that put Fairmont Ghia into the luxury class include such features as leather trimmed upholstery and premium sound system with optional CD player.

The demands made on today's executive are extraordinary. So it is only fair that such a person should be able to demand an extraordinary car: Fairmont Ghia.

#### THE OUTSIDE EDGE.

Presentation is just as important in a prestige motor car as it is in business. And Fairmont Ghia well and truly looks the part. The low profile bonnet, concealed drip rails and flush-mounted glass are all aids to a design that cuts briskly and efficiently through the air. And there are numerous design features to help keep intrusive noise to a minimum, such as effective body and door seals, thick front and side glass and recessed windscreen wipers.

Cast your eye over appearance-enhancing features like colour-coded mirrors and grille, pin striping, colour-keyed door handles, body side protection mouldings and bumpers, tinted side and rear glass, sports styled alloy wheels and, of course, the exclusive Ghia badge.





FAIRMONT GHIA



#### LUXURY ON THE INSIDE.

Fairmont Ghia treats both driver and passengers to a level of comfort and luxury that assures you arrive at your destination relaxed and ready for business - even if that business

is pleasure. First amongst its features is sheer room to stretch out and get comfortable. Interior trim is coordinated to complement the exterior colour and includes classic materials such as genuine wood and leather.

Seating is in a class by itself, deeply cushioned yet supportive, with the timeless feel of leather trim combined with luxurious 'Dresden' velour fabric. The front seats are of sporting design with

'see-through' head restraints.

There are generous provisions for adjustment of the driver's seat, allowing changes to fore and aft position, seat height, back rest recline and adjustable lumbar support. Rear

seats feature a pull-down centre armrest and a 60/40 split to allow accommodation of exceptionally large boot loads whilst still carrying one or two passengers. Rear passengers also enjoy the comforts

of leather trim and head restraints.

The boot itself is of capacious proportions with carpeted side and floor panels and a wide opening that extends down to bumper height for easy loading.

## IN THE

### DRIVER'S SEAT.

This is a truly commanding position, with instruments and controls all close at hand but laid out without clutter.

Immediately before you, a steering wheel encased in leather adjusts for rake and reach to give the optimum driving position.

Built into the wheel are switches for cruise control allowing you to maintain pre-selected speeds on the highway.

In the instrument panel, there's a quick and easy-to-read analogue display. It features large speed and tachometer dials surrounded by gauges for fuel, oil pressure, engine coolant temperature and battery voltage. In a strip below the instrument cluster are warning lights for nine separate mechanical functions.

Left of the central binnacle is the digital clock/trip computer display that enables you to monitor fuel consumption, average speed and distance to empty.

The computer also emits an audible warning when fuel is low. When selected, this display shows a clock with day, date and time.



### A CHANGE IS IN THE AIR.

Alongside the trip computer is the automatic climate control that maintains a specific selected temperature inside. This can also

display the ambient temperature.

Air conditioning is standard and keeps the atmosphere fresh and as well rapidly demists windows in damp or humid conditions.

As you know, Chloro Fluoro Carbons (CFCs) have been identified as a risk to upper atmospheric ozone. The air conditioning system in today's Fairmont and Fairmont Ghia

uses CFC-free refrigerant. This Ford initiative has resulted not only in a more environmentally friendly system but also a more effective one.

Other convenience features

include power mirrors, windows and door locks, remote fuel and boot opening and intermittent wipers.

For entertainment, a sophisticated Premium Sound System is included.

The heart of the system is an Alpine AM/FM stereo radio/cassette player featuring Dolby, music search, auto-scan memory storage and dynamic speakers for surround sound.

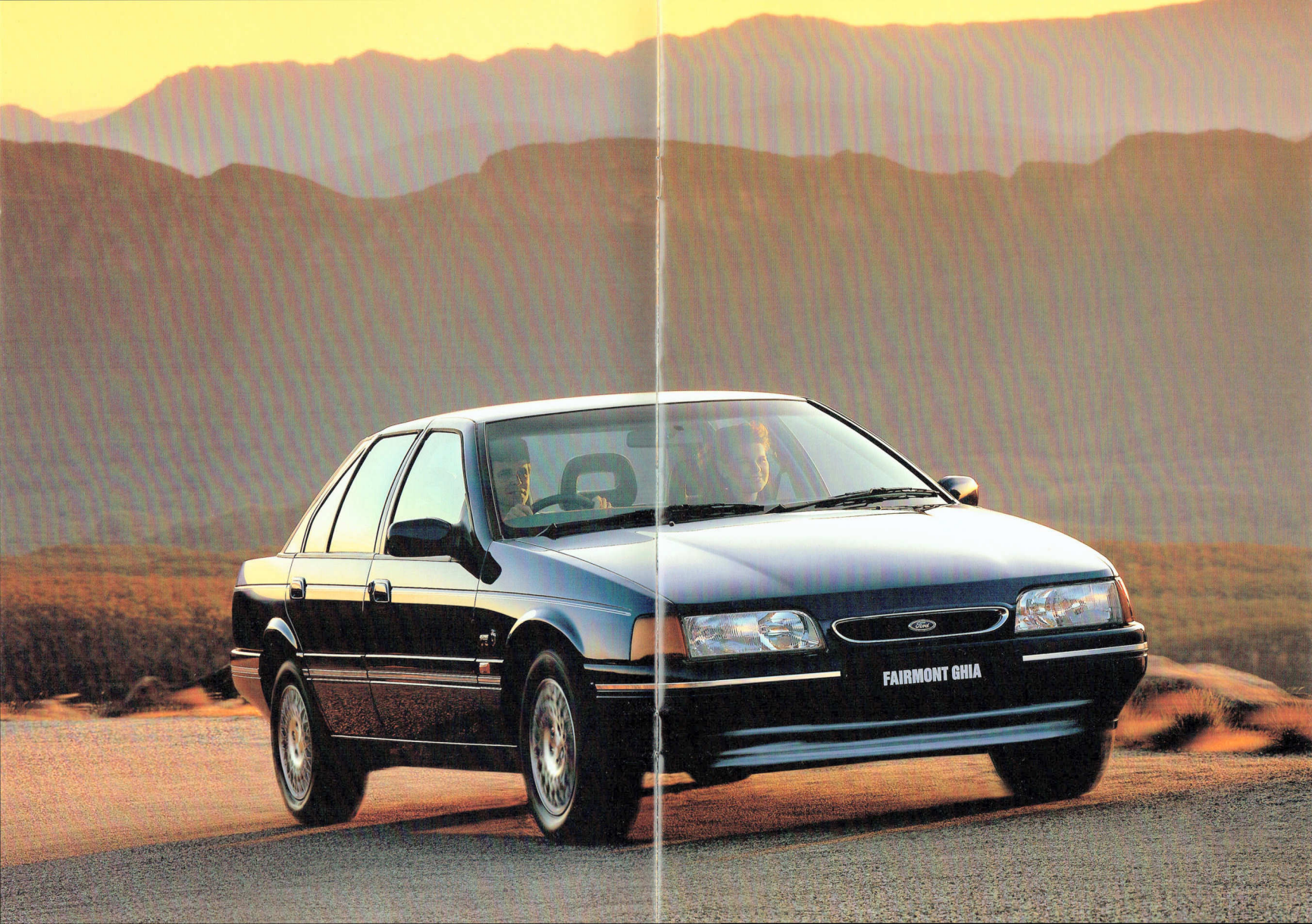
The unit is protected by security coding that renders it useless to thieves. It offers studio quality sound with a 260 Watt output through nine individual speaker elements, including satellite tweeters and sub-woofer.

The amplifier and speakers have been specially developed to suit the vehicle's acoustic profile for optimal sound performance.

Finally, the power antenna is automatically operated when the radio is in use.

True music lovers though will add the optional state-of-the-art CD player with boot-mounted remote changer.

The Premium Sound System has control switches and circuitry included to enable the CD player to be fitted later if desired.



THE FORD SAFETY EVOLUTION.

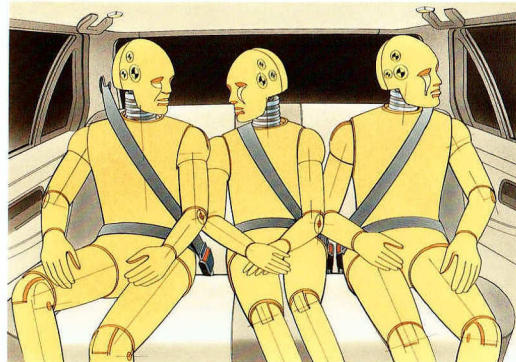


Ford has always had an ongoing commitment to continuously improving vehicle safety. Over successive generations of vehicles, Ford has incorporated an increasing number of safety features into Fairmont and Fairmont Ghia. Primary safety features include an engine

with sufficient power not to be found wanting when extra response is called for. Steering and suspension systems that are precise and predictable. Powerful braking, including four wheel discs and standard Anti-lock Braking System (ABS) on Fairmont and Fairmont Ghia.

But because, even though it may not be you or your car's fault, collisions do occur, Fairmont's secondary safety features are so important.

The list includes integral vehicle crumple zones and strengthened passenger compartments, special front seat belt lockers and inertia



Fairmont and Fairmont Ghia provide the security of inertia reel lap/shoulder seat belts for all occupants, including the rear centre passenger in sedans only.

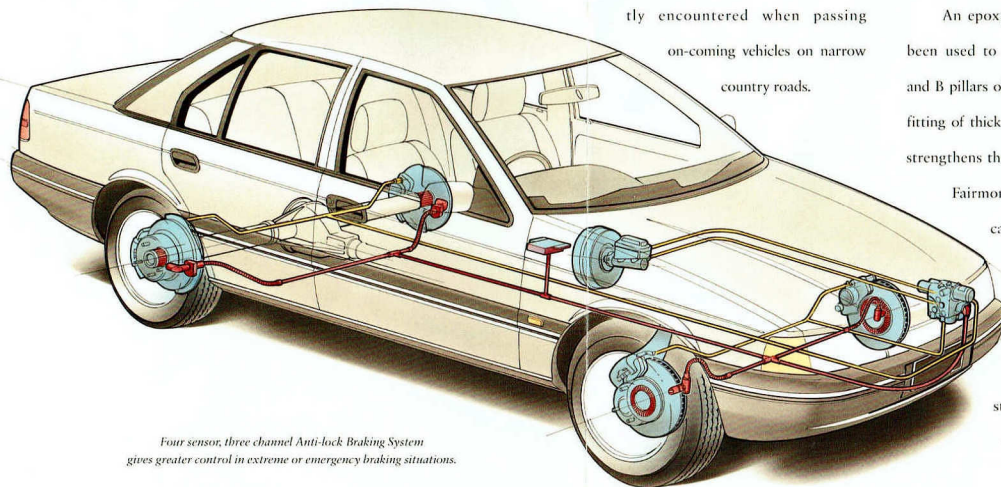
reel seat belts with reinforced channel Anti-lock Braking System (ABS) is designed to give you greater control over your vehicle in extreme or emergency braking situations.

In fact, Ford takes safety so seriously that Fairmont and Fairmont Ghia not only meets but significantly exceeds many of the safety standards laid down. Of all the features to be found on your new Ford, the ones concerning safety are the ones we hope you never have to think about.

But if you do, it's good to know that the engineers at Ford have done a lot of thinking for you. And here are some of their latest thoughts.

channel Anti-lock Braking System (ABS) is designed to give you greater control over your vehicle in extreme or emergency braking situations.

To prevent your brakes from locking, sensors at each wheel are

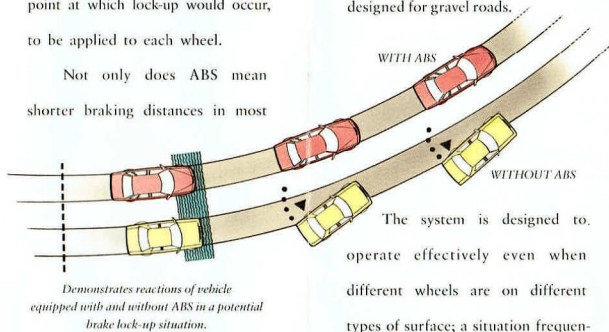


Four sensor, three channel Anti-lock Braking System gives greater control in extreme or emergency braking situations.

connected to a microprocessor which detects when a wheel is about to lock.

When triggered, a system of electronically-controlled valves between the brake booster and the wheel open and close several times per second to enable maximum braking power just short of the point at which lock-up would occur, to be applied to each wheel.

Not only does ABS mean shorter braking distances in most

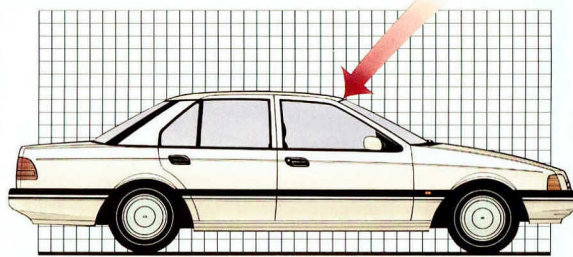


Demonstrates reactions of vehicle equipped with and without ABS in a potential brake lock-up situation.

circumstances, more importantly it means you still have full steering control so hazards can be more easily avoided by a combination of braking and steering.

The sophisticated ABS has software specially programmed for Australian road conditions, including a special 'deep pulse' program designed for gravel roads.

The system is designed to operate effectively even when different wheels are on different types of surface; a situation frequently encountered when passing on-coming vehicles on narrow country roads.



Epoxy resin reinforcement of A and B pillars plus thicker front and side glass has strengthened the passenger compartment.

**IT'S TOUGH AT THE TOP.**

The passenger safety cage in Fairmont and Fairmont Ghia has been significantly strengthened by improving its roof crush strength, making the intrusion beams in the doors stronger and by making the roof a structural member of the passenger compartment.

An epoxy resin composite has been used to reinforce both the A and B pillars of the vehicle, while the fitting of thicker front and side glass strengthens the area still further.

Fairmont and Fairmont Ghia can withstand a force of 32 kN (over 3 tonnes) in testing for the US roof crush resistance standard FMVSS 216.

**BELT UP FOR SAFETY.**

Seat belts usually don't rate much attention until you need them in an emergency. Fairmont and Fairmont Ghia help to protect all occupants, including the centre rear passenger, (sedan only) with lap/sash inertia reel seat belts.



Belt locker device minimises payout of seat belt webbing under extreme conditions.

The front seat belts have a special locking device that instantly minimises any seat belt webbing payout in extreme circumstances.

Also, sections of the front seat belt have 'popable' stitches to control precisely the movement of the wearer in a collision.

**MAJOR ADVANCES IN VEHICLE SECURITY.**

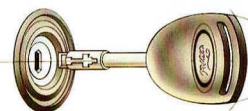
So that Fairmont and Fairmont Ghia attract no more than admiring looks from persons other than the owner, the latest technology has been applied in the area of vehicle security.



Smartlock keypad operates door locks by remote control.

Ford believes the best security system is the one you don't have to remember to switch on. So Ford developed Smartlock, a security system that's an integral part of your Fairmont's operating systems. It works by automatically immobilising the vehicle when the ignition key is removed.

Before it will enable the engine to start, the Smartlock computer module demands a set of precise codes that are only released by the high security 'Tibbe' ignition key. So even the most determined thief would find it virtually impossible to start the car. Also, the profile and barrel of the ignition lock have been specifically



Doors, ignition and boot are all protected by high security 'Tibbe' locks.

designed to frustrate even the most sophisticated attempts at theft.

Recessed door lock buttons help to guard against unauthorised entry.

For your convenience, Smartlock also provides keyless access to the vehicle via a remote control keypad which operates the standard power door locks and boot lock.



**SAFER FOR THE ENVIRONMENT TOO.**

As you know, Chloro Fluoro Carbons (CFCs) have been identified as a risk to upper atmospheric ozone. The standard factory fitted air conditioning system uses CFC-free refrigerant. This Ford initiative has resulted not only in a more environmentally friendly system but also a more effective one.

The CFC-free air conditioning system includes outlets at the back

of the centre console for the comfort of rear seat passengers.

**SECURITY CODED RADIO.**

The vehicle's radio and cassette player is protected by another Ford anti-theft measure. A special security code renders the unit useless to thieves.

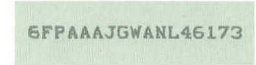


The radio and cassette player is protected by a programmed security code rendering the unit useless to thieves.

You'll discover that the security systems in Fairmont and Fairmont Ghia represent more than the latest technology. It's technology applied in a most intelligent way. See your Ford Dealer soon for a detailed presentation and demonstration.

**IDENTIFICATION CODING OF VEHICLE COMPONENTS.**

Every Ford is allocated a unique Vehicle Identification Number (VIN) which distinguishes the vehicle from all others on the road.

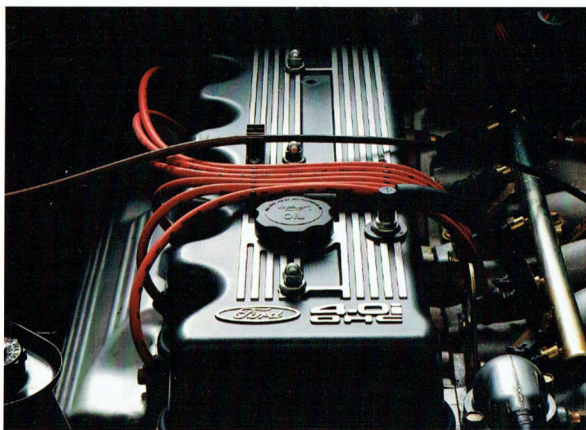


The Vehicle Identification Number (VIN) distinguishes your vehicle from all others on the road.

Major vehicle components are permanently marked with the VIN as another way of deterring theft.

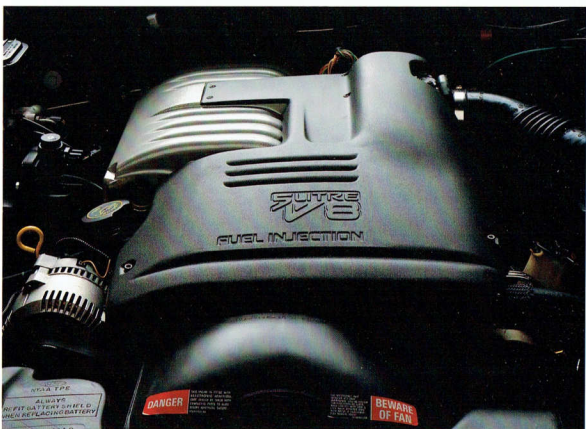
#### 4.0 MULTI-POINT EFI.

Bore & stroke mm	92.26 x 99.3
Cylinder head	OHV aluminium alloy
Displacement cc	3984
Compression ratio	8.8:1
Fuel injection	Multipoint
Fuel System	Elect. fuel inject. controlled by EEC4 Engine Management System
Fuel	Regular Unleaded
Max Power DIN & W/ rpm	148/4500
Max Torque Nm/ rpm	348/3750



#### 5.0 LITRE V8.

Bore & stroke mm	101.6 x 76.2
Cylinder head	OHV Push-rod iron
Displacement cc	4942
Compression ratio	90:1
Fuel injection	Sequential multipoint
Fuel System	Elect. fuel inject. controlled by EEC4 Engine Management System
Fuel	Regular Unleaded
Max Power DIN & W/ rpm	165/4500
Max Torque Nm/ rpm	388/3000



#### EXECUTIVE POWER.

As you'd expect, both Fairmont and Fairmont Ghia are equipped with engines that deliver performance specifications as impressive as their accommodation features.

The 4 litre six cylinder Ford

engine is equipped with an alloy head, overhead camshaft and multipoint electronic fuel injection.

It's designed to produce 148 kW of power at 4500 rpm and 348 Nm of torque at 3750 rpm. While this may be the most powerful six cylinder

engine ever offered with Fairmont, it's the smooth and quiet way in which the power is produced that's so impressive. That smoothness is the result of a revised combustion chamber plus significant advances in piston and valve technology. These

developments help the engine breathe better resulting in faster, more effective gas flow.

To help keep the engine operating at peak efficiency, and with optimum fuel efficiency, Ford's EEC4 Engine Management System incorporates a single highly advanced microprocessor that controls both engine and automatic transmission. This system, known as Integrated Powertrain Control, uses a single chip to reduce electronic complexity and increase reliability. The end result is the co-ordinated monitoring and control of sixteen important engine functions, including fuel/air mixture, air intake and coolant temperature, fuel flow and ignition timing.

#### THERE'S NO SUBSTITUTE

##### FOR V8 POWER.

For power without compromise, no engine delivers in quite the way a V8 does.

And because Fairmont and Fairmont Ghia are built for driving pleasure, V8 performance is available as an option. The 5 litre V8 engine is the inheritor of a proud tradition of Ford V8s.

And this engine is a worthy successor to those illustrious predecessors.

Equipped with Sequential Multipoint Electronic Fuel Injection, which is sequenced with engine valves to inject fuel at precisely the right moment, the V8 is able to generate a stirring 165kW at 4500 rpm. With tremendous torque figures of 388 Nm at 3000 rpm.

It is a product of technical excellence that delivers its power smoothly and effectively. It features single belt accessory drive, roller tappets and pistons. And the EEC 4 Engine Management System monitors and controls many of the engine's vital functions to help make it one of the most fuel efficient V8s ever. The results will delight even those most concerned about consumption.

Efficiency is also the key objective of the exhaust system design. A semi-dual layout is utilised featuring 63mm pipes to reduce restriction. The system is constructed of long-lasting stainless steel and finishes with the flourish of a chrome plated tailpipe.

No other engine has the ability to seemingly shorten distances, flatten hills or make light work of a tow load like a V8. And no other car combines the business-like performance of a V8 with precise handling and luxury

appointments like Fairmont and Fairmont Ghia.

#### TRANSMISSION REPORT.

Whichever engine you choose, Ford's advanced 4-speed electronic automatic transmission is standard. Designed, developed and built here in Australia, this electronically-controlled T-bar transmission offers the choice of selecting either power or economy



modes. Superbly quiet in operation, this 4-speed transmission is also economical, thanks in part to the lock-up clutch in the torque converter. Its silky smoothness is extraordinary, with changes between gears being virtually imperceptible.

#### IMPECCABLE BEHAVIOUR.

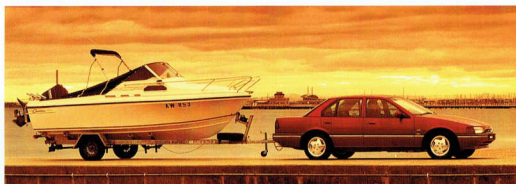
Fairmont and Fairmont Ghia both benefit from a steering and suspension system that gives a smooth and comfortable ride with handling characteristics that are precise and predictable.

Both sedans and the wagon feature suspensions with carefully chosen spring rates and nitrogen-charged gas shock absorbers.



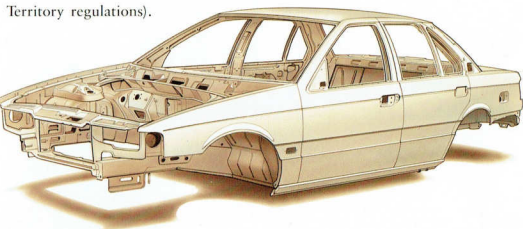
In addition, upper and lower rear suspension bushes and mountings are designed to contribute towards a smooth ride and a quiet, durable suspension.

The front suspension features the sophisticated short and long arm, long spindle (SLALS) system. It is built for strength and durability, yet also offers smooth and confident road holding.

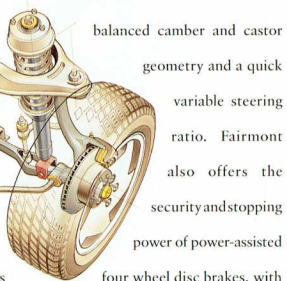


Fairmont and Fairmont Ghia sedans are fitted with a proven and reliable Watts Link rear suspension that produces precise and predictable road manners and outstanding stability whilst towing.

The Fairmont wagon retains the proven Hotchkiss rear suspension designed to cope with the extra loads to which a wagon is subjected. The power-assisted rack and pinion steering offers excellent 'feel' and sharp responses from precisely



Fairmont and Fairmont Ghia make ideal towing vehicles. Whilst you enjoy the comfortable interior, you can pull up to 2300 kg of boat, caravan, horse float or trailer when equipped with the Ford approved Tow Pack (subject to State and Territory regulations).



balanced camber and castor geometry and a quick variable steering ratio. Fairmont also offers the security and stopping power of power-assisted four wheel disc brakes, with a dual diaphragm booster and semi-metallic front disc pads on V8 specified vehicles.

**WHEN YOU'VE GOT**

**TO TOW.**

**PRETTY, TOUGH**

**PROTECTION.**

To provide the finishing touch to the bodies of Fairmont and Fairmont Ghia, four separate coating processes are applied.

The entire body of each vehicle is electro-chemically cleaned and prepared for painting.

Then it is dipped in primer. A second primer coat is applied robotically to ensure the most effective coverage.

The topcoat enamel is also applied by robot. Finally, a rust-proofing wax is applied.

But if you'd like an even finer finish, prestige body colours are available at no extra cost.

All this care in body finishing does more than give your car a finish worthy of its abilities. It also protects your investment. In fact, the body treatment does such a good job Ford offers a five year warranty against perforation corrosion.

**FEATURED ATTRACTIONS.**

As you have discovered, Fairmont and Fairmont Ghia possess an impressive array of standard equipment.

And whilst the big picture is one of luxury, comfort and style, numerous detailed features all add up to a lot of satisfaction and enjoyment.

1. *Steering wheel has reach and rake adjustment enabling the driver to find the most comfortable position.*
2. *Alpine premium sound system delivers studio quality sound through nine individual speaker elements. (Fairmont Ghia.)*
3. *The conveniently located power window controls include a rear lock-out switch to prevent operation of the rear windows by children.*
4. *The driver's seat incorporates adjustments for height and recline. It is also equipped with adjustable lumbar support.*
5. *Cruise control makes highway and country driving more relaxing.*
6. *Computer monitored automatic climate control allows you to select and maintain a constant temperature inside the cabin.*
7. *The multi-function digital trip computer and clock provides read-outs of useful data, including distance to empty, average and instant fuel consumption, average speed and, of course, the time.*
8. *60/40 split fold rear seat helps to accommodate awkward boot loads.*
9. *With your safety in mind, the front seat belts have special belt lockers which minimise pay-out of seat belt webbing in extreme circumstances.*
10. *Electric remote control LH and RH exterior mirrors.*



1.



2.



3.



4.



5.



6.



7.



8.



9.



10.



FAIRMONT AND  
FAIRMONT WAGON  
SETTING  
THE STANDARDS.

The latest model Fairmont is a vehicle so stylishly crafted, so impressively equipped and so competitively priced, it's hard to gauge which one of its many aspects is the most attractive.

Both the Fairmont sedan and wagon begin to impress the moment you lay eyes on them.

Attractive exterior lines that extend to the turbo blade alloy wheels, owe as much to the science of aerodynamics as they do to a sense of style.

Air flows over, under and around the vehicle contributing to excellent handling characteristics, low wind noise and surprising fuel economy. Inside, Fairmont offers a superb level of luxury.

Driver and passengers are accommodated in spacious surroundings and supported on deeply comfortable seats, with improved lateral support for the front buckets.

Interior trim is an attractive and long-lasting luxury velour in shades that allow true co-ordination of interior and exterior colour schemes.



Convenience features have never been so numerous, with refinements such as automatic climate control, trip computer, cruise control, power mirrors, windows and door locks finding a place in Fairmont's standard specifications.

An Alpine Premium Sound System and CD player are among the list of options that are available.

At night, Fairmont shows the way with its illuminated entry system where a light around the driver's side door keyhole and the interior lights switch on to assist entry whenever a front door handle is pulled.

With so much equipment listed as 'standard' for the Fairmont, even before you take your first drive in it you know that today's Fairmont is a car that is anything but standard.

Fairmont wagon is in every respect as luxuriously equipped as the Fairmont sedan. But with the generous load capacity that has always been a Fairmont strength.

Fairmont wagon provides up to 2622 litres of cargo capacity. And the flexible 60/40 split rear seat can be used to open up just the amount of space you need while carrying one or two passengers in the rear.

**STYLING AND  
SUSPENSION OPTIONS.**

Your new Fairmont or Fairmont Ghia is engineered to perform to exacting standards of ride and road holding.

But for the driver who wants to equip his new Ford to perform with even sharper handling and quicker responses, a sports suspension option is available to enhance your new car's touring capabilities.

Tow packs and an electric sunroof kit are also available. These options are specifically made for Fairmont and Fairmont Ghia from high quality materials, and because they are installed before delivery you are assured of proper fit and compatibility. And all Ford options are fully covered by the Ford 24 month/50,000 km Express New Vehicle Warranty.

**SPORTS SUSPENSION.**

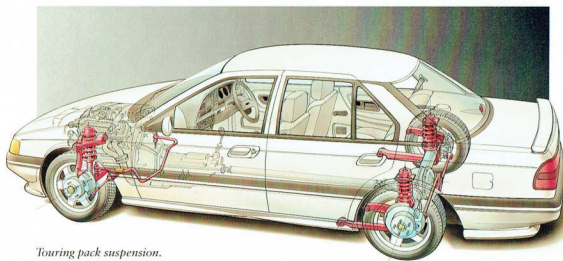
Outstanding comfort and responsive handling are combined in the Fairmont and Fairmont Ghia.



The Sports Suspension, using special springs, shock absorbers, bushes and front stabiliser bar, offers a similar combination but with more emphasis on responsive handling. It also provides a lower ride height.

**BODY STYLING KIT.**

Includes side skirts, front and rear aprons for the bumper bars and a raised deck lid spoiler with integrated high mounted stop light. Improves aerodynamic performance and gives your new car a sensational appearance.



*Touring pack suspension.*

**SUNROOF.**

Precision crafted electric glass sunroof fully imported from Germany.

Operates as a tilted vent to improve ventilation or partially or fully open to increase your enjoyment of the great outdoors. Automatic pop-up wind deflector reduces wind noise and buffeting.

**1200 kg RATED TOW PACK.**

Specifically designed for Fairmont. 1200 kg capacity. Includes the towbar with painted tongue, wiring harness, 7-pin connector, rein-

forcement brackets, and transmission oil cooler for automatic transmissions.

**HEAVY DUTY TOW PACK.**

For those who already have a 2100 kg or 2300 kg Load Distributing Hitch and who want a compatible towbar on their new Ford. Features Hayman Reese Heavy Duty Tow Bar (2300 kg rated capacity), trailer wiring kit, revised turn signal flasher, heavy duty brake pads (where not fitted as standard), transmission oil cooler for automatic transmissions, and a 1200 kg rated capacity plug-in tow ball mount.

**2300 kg RATED TOW PACK.**

2300 kg rated capacity.\* Features renowned Hayman Reese Heavy Duty Tow Bar and Load Distributing Hitch, trailer wiring kit, revised turn signal flasher, heavy duty brake pads (where not fitted as

standard), and transmission oil cooler for automatic transmissions.

**MOMO**

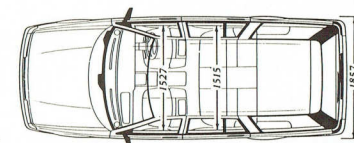
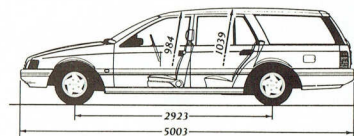
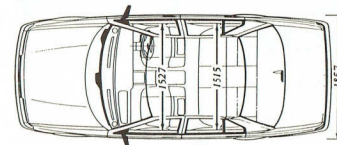
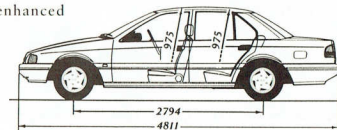
**STEERING WHEEL.**

Leather covered sports steering wheel designed for enhanced comfort, control and vehicle 'feel'.

**CAR ALARM.**

Available as a Dealer Fit Ford Accessory. Sophisticated and highly sensitive alarm system designed to protect your new Ford. It is fully integrated with the vehicle's *Smartlock* electronic immobilisation and keyless entry system. Features include

remote active arming, auto arming selectable, auto disarming, rearming if no entry after 60 seconds, starter cut-out, shock detector. *Smartlock* electronic immobilisation and keyless entry system. Features include remote active arming, auto arming selectable, auto disarming, rearming if no entry after 60 seconds, starter cut-out, shock detector.



\* Subject to State and Territory conditions.



#### FORD PRESTIGE SERVICE PLAN. EXCLUSIVELY YOURS.

One of the many rewards of owning a prestige vehicle like Fairmont Ghia is entitlement to the Ford Prestige Service Plan, which takes effect from the date you purchase your new car, and provides assistance and peace of mind for 3 years. The Ford Prestige Service Plan is part of Fordcare and is exclusive to owners of Ford prestige vehicles. Among the many benefits offered are:

- 24 hr Emergency Roadside Assistance in the event of mechanical breakdown.
- Emergency Towing and vehicle recovery service.
- One night's free emergency accommodation for up to 5 people.
- Free emergency rental car assistance in certain circumstances.

■ General assistance with medical matters.

■ Assistance with cancellation or re-booking of any pre-arranged travel and accommodation.

■ Urgent message relay anywhere in Australia.

In the event of a mechanical breakdown, these special services can be accessed from anywhere in the country, 24 hours a day, 365 days a year via a toll-free hotline.

The number is clearly shown on your personal owner identification card.

You will receive your card with your Ford Prestige Service Plan introduction pack. Keep it safe and always take it with you when you drive.

The card carries individual details about your vehicle and gives you access to all the services provided by the Ford Prestige Service Plan.

#### AN EXTRA SPECIAL SERVICE.

All Ford owners are special to us. But as the owner of a new prestige vehicle like a Fairmont Ghia you're entitled to expect considerations that reflect your valued status.

So to assist you in arranging routine servicing of your vehicle, the Ford Prestige Service Plan provides a central booking facility for any Ford dealership you choose.

And to make sure we're doing our job properly, you will receive a follow-up call after your service has been carried out to make certain you are fully satisfied with the work.

#### SERVICE LOAN VEHICLE.

If your Fairmont Ghia has to spend more than 24 hours at the servicing dealership in order for any warranty repairs to be carried out, a free loan vehicle will be available for you to use until your car is ready.

#### FORDCARE. OUR COMMITMENT TO CUSTOMER SATISFACTION.



Fordcare is a whole range of programs, products and services designed to make Ford owners the most satisfied motor vehicle owners in Australia.

Fordcare starts when you enter an Authorised Ford Dealer's showroom, it's there when you take delivery of your new Ford and it continues for the life of the vehicle.

That means first class service for you at all times, and nothing less than the best for your Ford from our extensive network of Authorised Ford Dealers.

As motor vehicles become more sophisticated and technically advanced, specialised care and maintenance become more vital.

Fordcare provides the technical equipment and expertise to keep your Ford operating in peak condition.

The well-being of your Ford is supported by these additional warranties:

#### THE FORD 24 MONTH/50,000 KM EXPRESS NEW VEHICLE WARRANTY.



Covers your Ford against defects in factory materials or workmanship for the first 24 months or 50,000 km whichever comes first.

When fitted at time of vehicle purchase, Ford Approved Accessories are also covered by the Ford 24 month/50,000 km Express New Vehicle Warranty.

#### FIVE YEAR PERFORMANCE CORROSION WARRANTY.

Covers the original vehicle's body against perforation corrosion for the first five years of its life.

#### LIFETIME SERVICE WARRANTY.



Covers the majority of part replacements, including labour, carried out by your Authorised Ford Dealer after the expiration of the initial Ford 24 month/50,000 km Express New Vehicle Warranty.

It means you will only ever pay once for such repairs under normal driving conditions.

#### LIFELONG PANEL WARRANTY.



Covers replacement of outer body panels against perforation corrosion for the life of the vehicle. Further information on these warranties may be obtained from your Authorised Ford Dealer.

#### FORD CUSTOMER ASSISTANCE CENTRE.



You will find our Customer Assistance Representatives responsive to your needs. They can assist with any general enquiry about your vehicle that calls for special information beyond the scope of your Authorised Ford Dealer.

Customer Assistance Centre phone 008 333 306 (TOLL FREE), in Melbourne phone 359 7023.

#### FORD LEASING.



Fully maintained operating leases are available to approved applicants through Ford Credit Australia Limited. Enquire at your participating Authorised Ford Dealer.

This brochure is designed to provide you with a general introduction to the Ford Products (including available optional equipment) referred to, and should be read in conjunction with the latest specification sheet. Because of changes in conditions and circumstances Ford<sup>®</sup> reserves the right, subject to all applicable laws, at any time, at its discretion, and without notice, to discontinue or change the features, designs, materials, colours and other specifications and the prices of their products, and to either permanently or temporarily withdraw any such products from the market without incurring any liability to any prospective purchaser or purchaser. The latest specification sheet should be referred to for information on the availability, ordering and use of optional equipment. Always consult an Authorised Ford Dealer for the latest information with respect to features, specifications, prices, optional equipment and availability before deciding to place an order. \*FORD MOTOR COMPANY OF AUSTRALIA LIMITED. (A.C.N. 004 116 223) Registered Office: 1735 Sydney Road, Campbellfield, Victoria 3061, Australia. Printed July 1993.



**HAVE YOU DRIVEN A FORD...LATELY?**