

THE STARS OF THE SHOW.

THE FORD RANGE OF TODAY!



HAVE YOU DRIVEN A FORD...LATELY?

Laser TX3:
1.8 litre DOHC, 16 valves, let's go!

LTD:
Ford's most prestigious vehicle, representing the pinnacle of Australian luxury motoring.

Telstar Ghia sedan:
2.0 litre 4-cyl. or 2.5 litre V6.

TX-5 Ghia:
5-door hatch with 2.0 litre 4-cyl. or 2.5 litre V6.

Courier 2WD:
Class-leading power in a Pick-up, Crew Cab, Super Cab or Chassis Cab.

Courier 4WD XL Super Cab:
There isn't a more powerful vehicle in its class. Also available as Pick-up, Crew Cab or Chassis Cab.

Econovan:
11 models offer van buyers a lot of choice, a lot of space, a lot of value.

Falcon Longreach S ute:
With 148kW (198 hp) of power @ 4,500 rpm, Longreach delivers over 50% more power than the model it replaced along with over 40 other major improvements.

Falcon Longreach GLi van:
The brother of Longreach ute and the only 6-cylinder Aussie van on the market.

Raider 4WD:
The 7-seat go-anywhere adventure machine that can outrun a V6.

Trader:
Truckers love Traders - and there are seven models to choose from, ranging from 2 to 4 tonnes, every one with power steering.



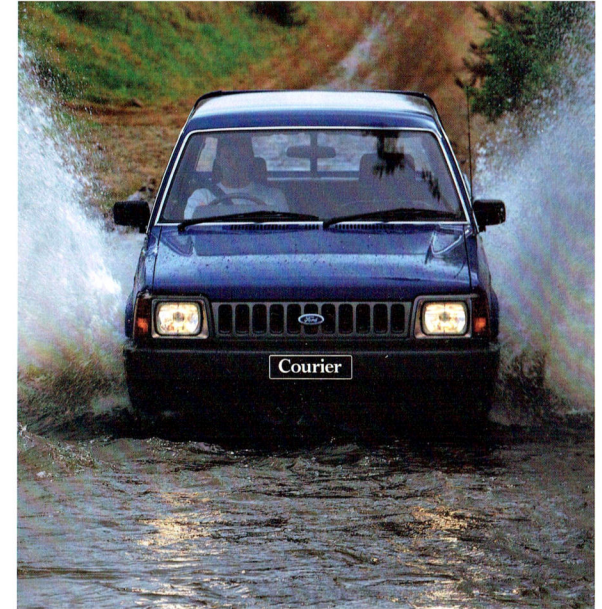
Trader



Econovan



Falcon Longreach GLi van



Courier 2WD



Falcon Longreach S ute



Courier 4WD XL Super Cab

FORDCARE.

OUR COMMITMENT

TO

CUSTOMER

SATISFACTION.



Fordcare is a whole range of programs, products and services designed to make Ford owners the most satisfied motor vehicle owners in Australia.

Fordcare starts when you enter an Authorised Ford Dealer's showroom, it's there when you take delivery of your new Ford and it continues for the life of the vehicle.

That means first class service for you at all times, and nothing less than the best for your Ford from our extensive network of Authorised Ford Dealers.

As motor vehicles become more sophisticated and technically advanced, specialised care and maintenance become more vital.

Fordcare provides the technical equipment and expertise to keep your Ford operating in peak condition.

The well-being of your Ford is supported by these additional warranties:

THE FORD

24 MONTH/50,000 KM

EXPRESS NEW VEHICLE

WARRANTY.



Covers your Ford against defects in factory materials or workmanship for the first 24 months or 50,000 km whichever comes first.

When fitted at time of vehicle purchase, Ford Approved Accessories are also covered by the Ford 24 month/50,000 km Express New Vehicle Warranty.

FIVE YEAR PERFORATION

CORROSION WARRANTY.

Covers the original vehicle's body against perforation corrosion for the first five years of its life.

LIFETIME SERVICE

WARRANTY.



Covers the majority of part replacements, including labour, carried out by your Authorised Ford Dealer after the expiration of the initial Ford 24 month/50,000 km Express New Vehicle Warranty.

It means you will only ever pay once for such repairs under normal driving conditions.

LIFELONG PANEL

WARRANTY.



Covers replacement of outer body panels against perforation corrosion for the life of the vehicle. Further information on these warranties may be obtained from your Authorised Ford Dealer.

FORD CUSTOMER

ASSISTANCE CENTRE.



You will find our Customer Assistance Representatives responsive to your needs. They can assist with any general enquiry about your vehicle that calls for special information beyond the scope of your Authorised Ford Dealer.

Customer Assistance Centre phone 008 333 306 (TOLL FREE), in Melbourne phone 359 7023.

FORD LEASING.



Fully maintained operating leases are available to approved applicants through Ford Credit Australia Limited. Enquire at your participating Authorised Ford Dealer.

This brochure is designed to provide you with a general introduction to the Ford Products (including available optional equipment) referred to, and should be read in conjunction with the latest specification sheet. Because of changes in conditions and circumstances Ford[®] reserves the right, subject to all applicable laws, at any time, at its discretion, and without notice, to discontinue or change the features, designs, materials, colours and other specifications and the prices of their products, and to either permanently or temporarily withdraw any such products from the market without incurring any liability to any prospective purchaser or purchaser. The latest specification sheet should be referred to for information on the availability, ordering and use of optional equipment. Always consult an Authorised Ford Dealer for the latest information with respect to features, specifications, prices, optional equipment and availability before deciding to place an order. *FORD MOTOR COMPANY OF AUSTRALIA LIMITED. (A.C.N.004 116 223) Registered Office: 1735 Sydney Road, Campbellfield, Victoria 3061, Australia. Printed Sept. 1993.

Laser TX3:
1.8 litre DOHC, 16 valves, let's go!

LTD:
Ford's most prestigious vehicle, representing the pinnacle of Australian luxury motoring.

Telstar Ghia sedan:
2.0 litre 4-cyl. or 2.5 litre V6.

TX-5 Ghia:
5-door hatch with 2.0 litre 4-cyl. or 2.5 litre V6.

Courier 2WD:
Class-leading power in a Pick-up, Crew Cab, Super Cab or Chassis Cab.

Courier 4WD XL Super Cab:
There isn't a more powerful vehicle in its class. Also available as Pick-up, Crew Cab or Chassis Cab.

Econovan:
11 models offer van buyers a lot of choice, a lot of space, a lot of value.

Falcon Longreach S ute:
With 148kW (198 hp) of power @ 4,500 rpm, Longreach delivers over 50% more power than the model it replaced along with over 40 other major improvements.

Falcon Longreach GLi van:
The brother of Longreach ute and the only 6-cylinder Aussie van on the market.

Raider 4WD:
The 7-seat go-anywhere adventure machine that can outrun a V6.

Trader:
Truckers love Traders - and there are seven models to choose from, ranging from 2 to 4 tonnes, every one with power steering.



Trader



Econovan



Falcon Longreach GLi van



Falcon Longreach S ute



Courier 2WD



Courier 4WD XL Super Cab

FORDCARE.
OUR COMMITMENT
TO
CUSTOMER
SATISFACTION.



Fordcare is a whole range of programs, products and services designed to make Ford owners the most satisfied motor vehicle owners in Australia.

Fordcare starts when you enter an Authorised Ford Dealer's showroom, it's there when you take delivery of your new Ford and it continues for the life of the vehicle.

That means first class service for you at all times, and nothing less than the best for your Ford from our extensive network of Authorised Ford Dealers.

As motor vehicles become more sophisticated and technically advanced, specialised care and maintenance become more vital.

Fordcare provides the technical equipment and expertise to keep your Ford operating in peak condition.

The well-being of your Ford is supported by these additional warranties:

THE FORD
24 MONTH/50,000KM
EXPRESS NEW VEHICLE
WARRANTY.



Covers your Ford against defects in factory materials or workmanship for the first 24 months or 50,000 km whichever comes first.

When fitted at time of vehicle purchase, Ford Approved Accessories are also covered by the Ford 24 month/50,000 km Express New Vehicle Warranty.

FIVE YEAR PERFORATION
CORROSION WARRANTY.

Covers the original vehicle's body against perforation corrosion for the first five years of its life.

LIFETIME SERVICE
WARRANTY.



Covers the majority of part replacements, including labour, carried out by your Authorised Ford Dealer after the expiration of the initial Ford 24 month/50,000 km Express New Vehicle Warranty.

It means you will only ever pay once for such repairs under normal driving conditions.

LIFELONG PANEL
WARRANTY.



Covers replacement of outer body panels against perforation corrosion for the life of the vehicle. Further information on these warranties may be obtained from your Authorised Ford Dealer.

FORD CUSTOMER
ASSISTANCE CENTRE.



You will find our Customer Assistance Representatives responsive to your needs. They can assist with any general enquiry about your vehicle that calls for special information beyond the scope of your Authorised Ford Dealer.

Customer Assistance Centre phone 008 333 306 (TOLL FREE), in Melbourne phone 359 7023.

FORD LEASING.



Fully maintained operating leases are available to approved applicants through Ford Credit Australia Limited. Enquire at your participating Authorised Ford Dealer.

This brochure is designed to provide you with a general introduction to the Ford Products (including available optional equipment) referred to, and should be read in conjunction with the latest specification sheet. Because of changes in conditions and circumstances Ford reserves the right, subject to all applicable laws, at any time, at its discretion, and without notice, to discontinue or change the features, designs, materials, colours and other specifications and the prices of their products, and to either permanently or temporarily withdraw any such products from the market without incurring any liability to any prospective purchaser or purchaser. The latest specification sheet should be referred to for information on the availability, ordering and use of optional equipment. Always consult an Authorised Ford Dealer for the latest information with respect to features, specifications, prices, optional equipment and availability before deciding to place an order. *FORD MOTOR COMPANY OF AUSTRALIA LIMITED. (A.C.N. 004 116 223) Registered Office: 1735 Sydney Road, Campbellfield, Victoria 3061, Australia. Printed Sept. 1993.

THE STARS OF THE SHOW.

THE FORD RANGE OF TODAY!



HAVE YOU DRIVEN A FORD...LATELY?

For a brilliant show of innovation, advanced engineering and value for money, take a trip through this brochure.

Or take a look at any highway, street or road where Ford vehicles are performing daily.

Today's Ford range brings you the lot. Sports cars, sedans, hatchbacks, wagons and light trucks.

The luxurious, the exciting, the powerful, the economical and the versatile.



Inspired by the products of Ford's Ghia plant in Turin, the Ghia emblem denotes vehicles of unsurpassed quality.

You will find the Ghia badge adorning Fairmont, Fairlane, TX5, Telstar and Laser models. It signifies that not only will these magnificent vehicles carry you over any distance in superb comfort, they will also take you there in exquisite luxury.

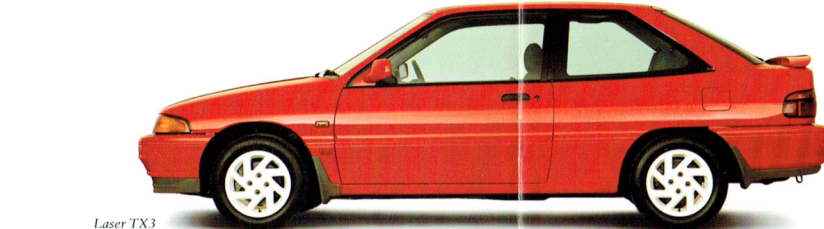
So come and take a look. Better still, come and take a drive at your nearest Authorised Ford Dealer.



Laser Ghia sedan



Laser S



Laser TX3



Festiva



Festiva Trio



Laser GLi



Capri Clubsport



Falcon GLi sedan



Falcon XR8



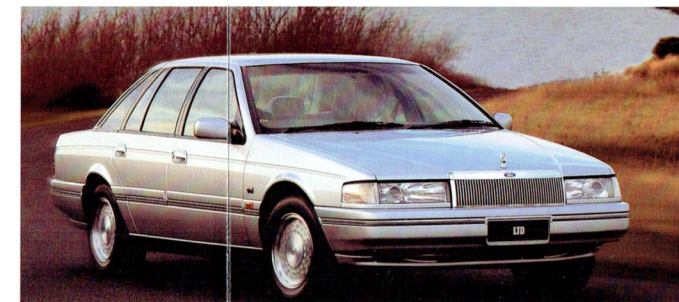
Fairlane Ghia



Capri Barchetta



Falcon XR6



LTD



Raider 4WD



TX5 Ghia



Falcon Futura sedan



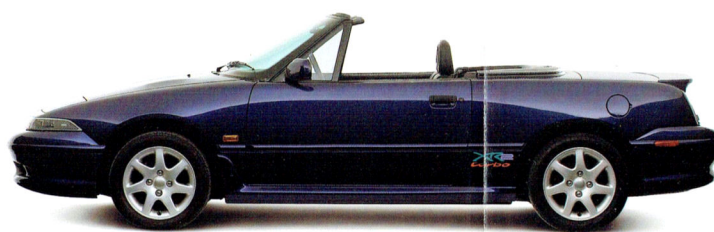
Falcon GLi wagon



Fairmont Ghia



Telstar Ghia sedan



Capri XR2



Falcon Futura wagon



Fairmont sedan and Fairmont wagon

Capri Barchetta:
Getting there is *all* the fun!

Capri Clubsport:
1.6 litre with turbo option and real leather.

Capri XR2:
1.6 litre with turbo option. Served hot.

Fairlane Ghia:
Designed to carry you over any distance in exquisite luxury.

Fairmont Ghia:
A superb combination of performance and luxury.

Fairmont Wagon:
Sedan luxury with 2622 litres of versatile, useable space.

Falcon Futura Sedan:
Distinctive styling and refinement with equally attractive value.

Falcon Futura Wagon:
Distinctive and versatile.

Falcon GLi Sedan:
4.0 litre 6-cyl. or 5.0 litre V8.

Falcon XR6:
The Aussie six that's quick. *Very* quick.

Falcon XR8:
5.0 litre V8 sports sedan.

Festiva Trio:
1.3 litre 3-door hatch. Why pay more?

Festiva:
The 1.3 litre 5-door hatch.

Laser Ghia Sedan:
The most luxurious Laser.

Laser GLi:
1.8 litre 16 valve 5-door hatch.

Laser S:
1.8 litre 16 valve 5-door hatch.