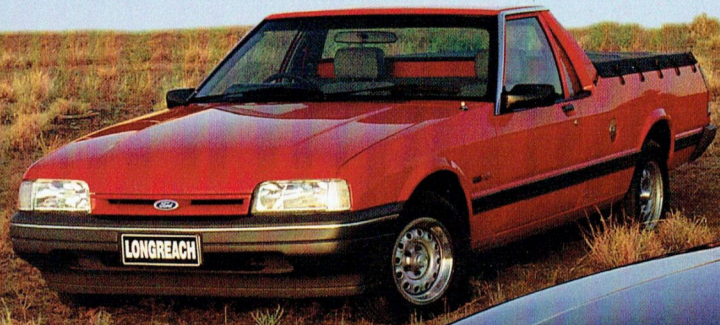


NEW FORD FALCON LONGREACH.

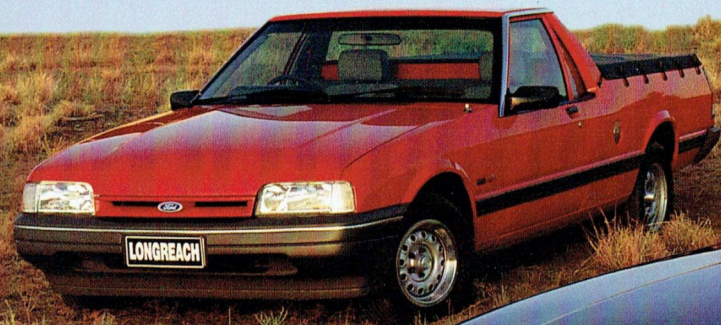
UTES AND VAN.



HAVE YOU DRIVEN A FORD...LATELY?



NEW FORD FALCON LONGREACH. UTES AND VAN.



HAVE YOU DRIVEN A FORD...LATELY?

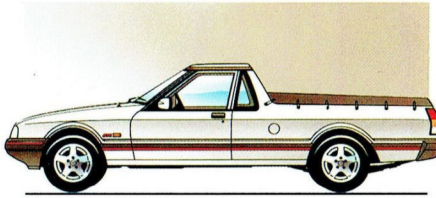


Much of what has helped to build Australia's quite unique character is embodied in a single name: *Longreach*. For this town located 1,100 kilometres north-west of Brisbane is the home of the Stockman's Hall of Fame. It is also the birthplace of a great Australian success story, Qantas.

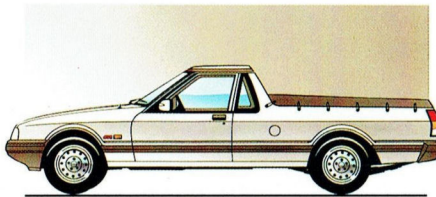
With grit and determination, Australia's legendary stockmen overcame the challenges of the outback to get the job done.

FALCON LONGREACH

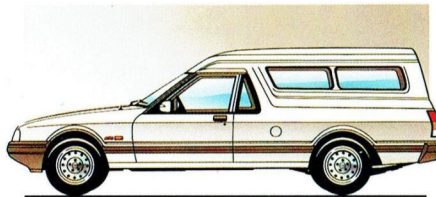
S UTE.



Falcon Longreach S Ute.



Falcon Longreach GLi Ute.



Falcon Longreach GLi Van.



HAVE YOU DRIVEN A FORD...LATELY?

- 4.0 litre overhead camshaft multipoint EFI 6 cylinder engine.
- 4-wheel power disc brakes.
- 5-speed manual transmission.
- 15 inch alloy road wheels.
- 205 x 15 high performance tyres.
- 4-speed electronic auto transmission (optional).
- Improved feel speed sensitive power steering.
- Up to 773 kg load capacity.
- Up to 2100 kg towing capacity (depending on State & Territory laws).
- Tonneau cover with twin bows.
- Footwell illumination.
- Carpeted door bins.
- Body colour electric side mirrors.
- Intermittent wiper function.
- Heated, tinted and shaded backlight.
- Distinctive cloth trim.
- Improved noise insulation.
- Internal load tie-downs.
- High security Tibbe door and ignition locks.
- Security coded two channel 4-speaker electronic tune AM/FM stereo radio/cassette player.
- Steering column rake adjustment.
- Speedometer.
- Tachometer.
- Temperature gauge.
- Oil pressure gauge.
- Voltmeter.
- Warning lights for 9 mechanical functions.
- Tinted windscreen.
- Bumpstops on tailgate.
- EB type shock absorbers with stone shields.
- EB style steering wheel.
- Driver's footrest.
- Driver's seat lumbar support.
- Improved unladen ride.

FALCON LONGREACH

GLi UTE.

- 4.0 litre overhead camshaft multipoint EFI 6 cylinder engine.
- 4-wheel power disc brakes.
- 5-speed manual transmission.
- Optional 4-speed electronic auto transmission (floor or column shift).
- Improved feel speed sensitive power steering.
- Up to 806 kg load capacity.
- Up to 2100 kg towing capacity (depending on State & Territory laws).
- 195 x H14 higher speed rated tyres.
- Tonneau cover with twin bows.
- Internal load tie-downs.
- High security Tibbe door and ignition locks.
- Security coded 2-speaker electronic tune AM/FM radio/cassette player.
- Steering column adjustable for rake (with floor transmission).
- Warning lights for 6 mechanical functions.
- Intermittent wiper function.
- Tinted and shaded backlight.
- Attractive stain-resistant cloth trim.
- Improved noise insulation.
- Tinted windscreen.
- Bumpstops on tailgate.
- EB type shock absorbers with stone shields.
- EB style steering wheel and instrument cluster.
- Door map pockets.
- Driver's footrest.
- Driver's seat lumbar support (bucket seats).
- Improved unladen ride.

This brochure is designed to provide you with a general introduction to the Ford Products (including available optional equipment) referred to, and should be read in conjunction with the latest specification sheet. Because of changes in conditions and circumstances Ford* reserves the right, subject to all applicable laws, at any time, at its discretion, and without notice, to discontinue or change the features, designs, materials, colours and other specifications and the prices of their products, and to either permanently or temporarily withdraw any such products from the market without incurring any liability to any prospective purchaser or purchaser. The latest specification sheet should be referred to for information on the availability, ordering and use of optional equipment. Always consult an Authorised Ford Dealer for the latest information with respect to features, specifications, prices, optional equipment and availability before deciding to place an order. *FORD MOTOR COMPANY OF AUSTRALIA LIMITED. (A.C.N. 004 116 223) Registered Office: 1735 Sydney Road, Campbellfield, Victoria 3061, Australia. Printed March 1993.

FALCON LONGREACH

GLi VAN.

- 4.0 litre overhead camshaft multipoint EFI 6 cylinder engine.
- 4-wheel power disc brakes.
- 5-speed manual transmission.
- Optional 4-speed electronic auto transmission (floor or column shift).
- Improved feel speed sensitive power steering.
- Up to 763 kg load capacity.
- Up to 2100 kg towing capacity (depending on State & Territory laws).
- 195 x H14 higher speed rated tyres.
- High security Tibbe door and ignition locks.
- Security coded 2-speaker electronic tune AM/FM radio/cassette player.
- Steering column adjustable for rake (with floor transmission).
- Warning lights for 6 mechanical functions.
- Intermittent wiper function.
- Attractive stain-resistant cloth trim.
- Tinted windscreen.
- EB type shock absorbers with stone shields.
- EB style steering wheel and instrument cluster.
- Door map pockets.
- Driver's footrest.
- Driver's seat lumbar support (bucket seats).
- Improved unladen ride.

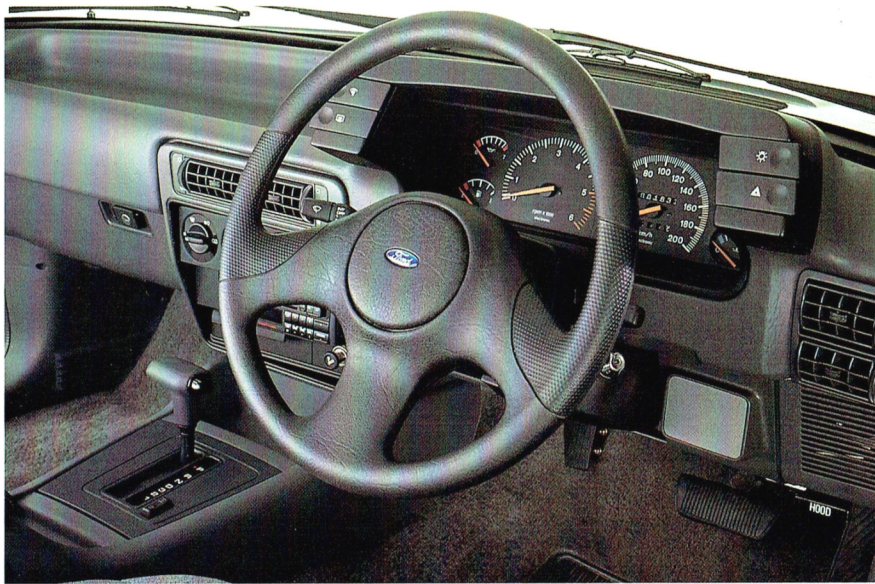
FORD APPROVED

ACCESSORIES FOR MORE FUNCTION AND STYLE.

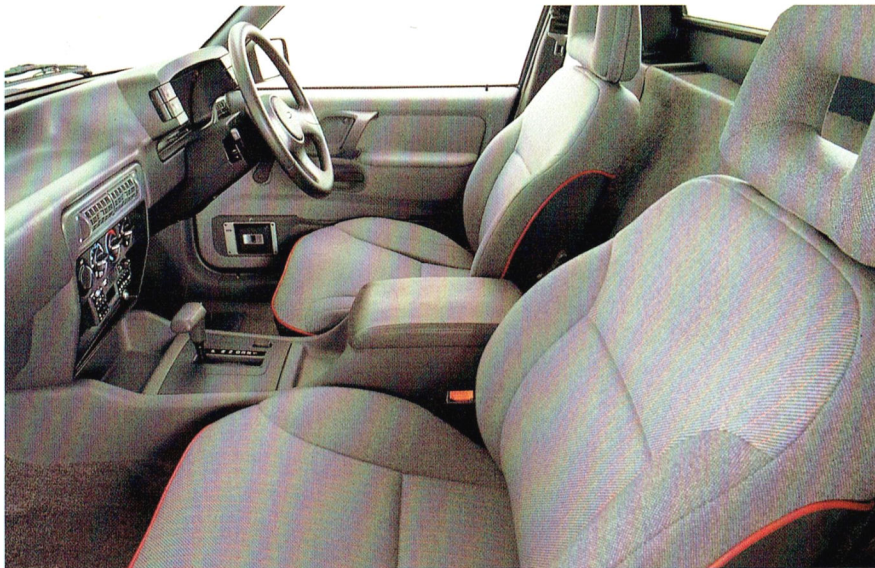
Ford Approved Accessories are designed and engineered for Falcon Longreach and if fitted before you take delivery of your new Longreach are covered by the Ford 24 month/50,000 km Express New Vehicle Warranty.



- Air Conditioning.
- Bonnet Protector.
- Headlamp Guards.
- Fog/Driving Lamps.
- Rear Louvre (ute only).
- Car Mats.
- Mudflaps.
- Rope Rail Kit (ute only).
- Sump Guard Kit.
- Insect Screen.
- Transmission Oil Cooler.
- Towbar.
- Sunvisor.
- Weathershield.
- Sports Wheels.
- Nudge Bar.
- Pioneer Radio/Cassette.
- Bed Liner Mats.



Falcon Longreach S, with centre console and comprehensive instrument display.



Falcon Longreach S interior shown with bucket seats. Driver's seat features adjustable lumbar support.

and all the GLi performance and comfort features we've already described.

FALCON LONGREACH S UTE.
IT SPORTS A LOT OF STYLE.

If you like the idea of mixing even more pleasure with your business, Falcon Longreach S is definitely the way to go.

You get all the advanced mechanical enhancements of Longreach GLi, together with a lot of head-turning style and a heap of extra features.

Falcon Longreach S rides on big 15 inch alloy road wheels fitted with 205x15 high performance tyres.

And you ride with more than a little luxury. The driver's seat has lumbar adjustment and the instrument panel has a full display of information.

There are large speedometer and tachometer dials surrounded by gauges for fuel, oil pressure, engine coolant temperature and battery voltage. In a strip below the instrument cluster are warning lights for nine separate mechanical

functions, including low coolant level and even a warning to tell you when the washer fluid is low.

For your enjoyment, Falcon Longreach S includes a quality two channel AM/FM stereo radio/cassette player.

The system drives four speakers, and incorporates a programmed anti-theft security code which renders the unit useless to thieves.

Falcon Longreach S is also equipped with electronically controlled side mirrors. These are body colour to add that extra touch of style. Footwell illumination complements the overhead interior lamp.

For your convenience, the doors are fitted with handy carpeted storage bins. The door panels are covered in hard wearing, stain-resistant cloth and have padded armrests. For rapid demisting, the tinted backlight has an inbuilt heater.

If you want a hard working ute that gives you plenty of luxury on and off the job, Falcon Longreach S is the perfect choice.

That Aussie spirit goes straight to the heart of our new Falcon Longreach ute and van.

New Falcon Longreach. It's as Aussie tough as the Falcon ute ever was. But behind that familiar face is a package bristling with 1990s' technology and refinement.

OVER 40 IMPROVEMENTS, BUT...

...you'll be relieved to know, we couldn't bring ourselves to mess with that rugged styling. Was the world ready for another cute ute? We thought not.

This decision enabled our engineers to focus on the things that really count.

The moment you depress the accelerator, you'll know they got their priorities right.

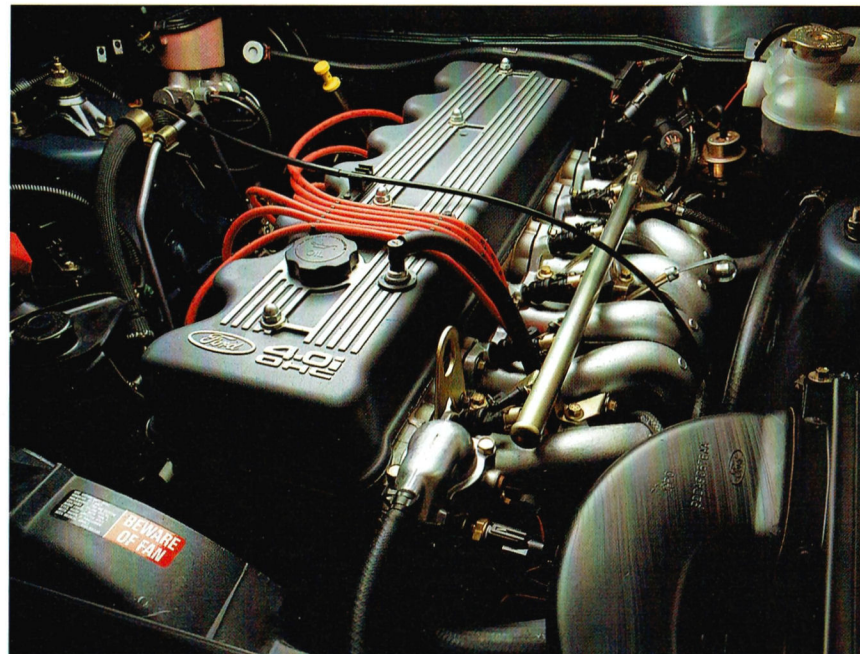
THIS WORKHORSE SUDDENLY HAS 50% MORE HORSES.

'Workhorse?' Well, yes, although 'mustang' rather than 'horse' would describe more accurately the performance and personality of the new Falcon Longreach.

The Longreach's zest for the job can be put down, basically, to the Ford 4.0 litre overhead camshaft multipoint EFI engine. It's the most powerful 6-cylinder engine ever offered in a Falcon ute or van. It's the one that powers our acclaimed EB series sedans and wagons.

This engine develops 148 kW (198 hp) @ 4,500 rpm, giving Longreach 50% more power than the model it replaces. It also produces a substantial 348 Nm of torque @ 3,750 rpm. But this 4.0 litre 6-cylinder Ford engine isn't only about power and torque. It also concerns technical refinement, smoothness, efficiency and reliability.

The engine's operating systems, including the multipoint electronic fuel injection, are maintained at peak efficiency by Ford's advanced EEC4



computerised management unit.

The alloy cylinder head, combustion chamber design, and piston and valve technology all reflect Ford's position at the forefront of automotive engineering.

All this gives Longreach a decided edge in the area that matters most: your driving satisfaction. And, if you know your utes, you've probably already figured out that Longreach offers over 20 kW more power than that other 6-cylinder ute.

The 4.0 litre engine is matched to a new 5-speed manual transmission developed for the EB series Falcons. Gear changes are smooth, positive, easy.

However, if you reckon that automatic is the only way to go, Longreach comes with a very pleasant surprise: Ford's distinguished and efficient electronic 4-speed automatic



transmission, available as an option. It's noted for its smooth driveability and excellent fuel consumption.

Consistent with the notion that a little fun is good for the soul, both transmissions deliver impressive off-the-mark performance thanks to Longreach's 3.27:1 rear axle ratio. And you have a choice of floor or column gearshift locations.

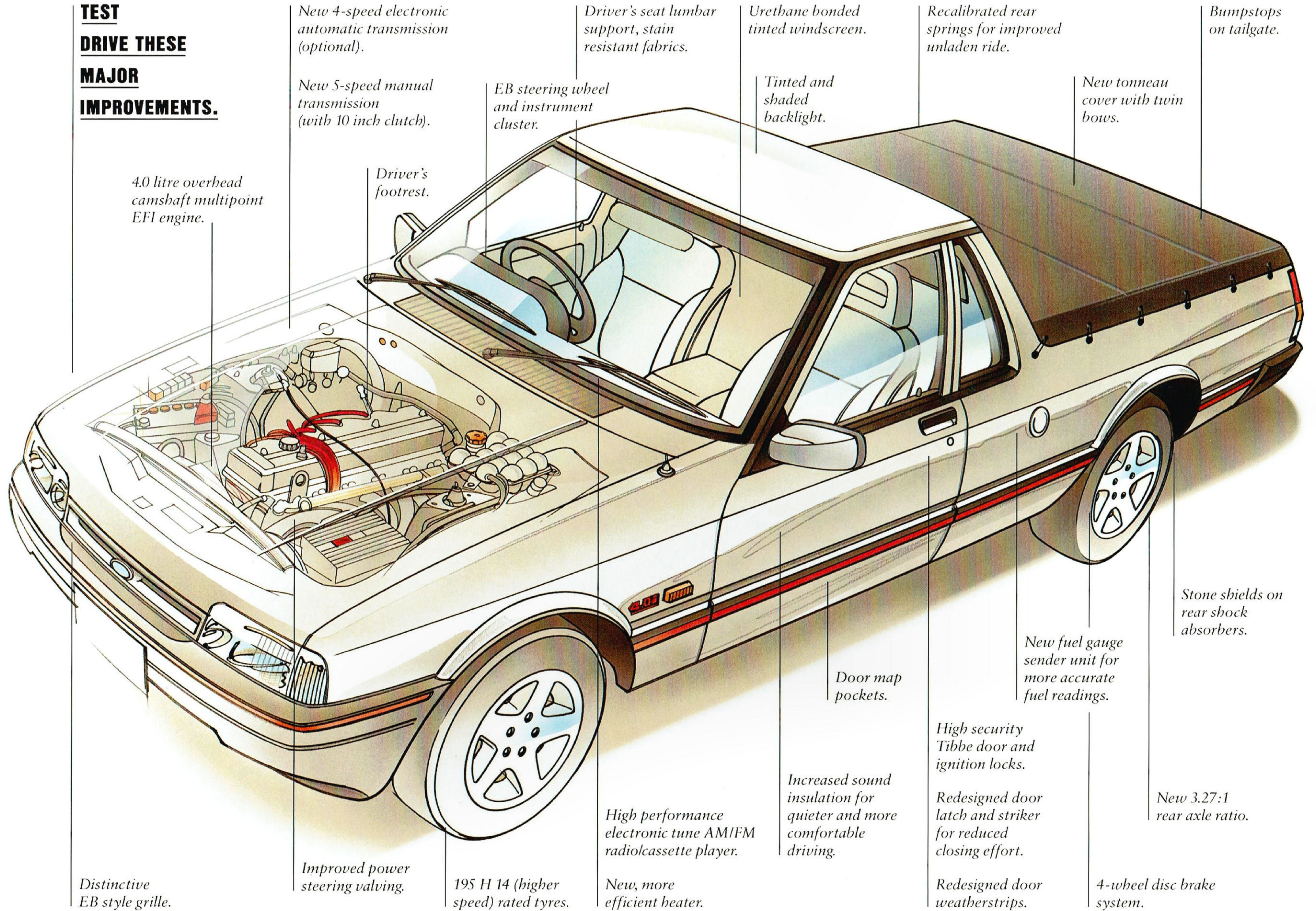
Something else you'll notice: the improved response and feel of the power steering on Longreach. The power steering is also backed by a cooling system to maintain it at peak operating efficiency.

Not only does this Falcon really go, it also stops with the absolute authority of four wheel power disc brakes.

Falcon Ute is as tough as it's always been. Even tougher. But tough doesn't mean rough. Longreach delivers excellent ride comfort thanks to the

Optional electronic 4-speed automatic transmission. (Column shift also available.)

**TEST
DRIVE THESE
MAJOR
IMPROVEMENTS.**



4.0 litre overhead camshaft multipoint EFI engine.

New 4-speed electronic automatic transmission (optional).

New 5-speed manual transmission (with 10 inch clutch).

Driver's seat lumbar support, stain resistant fabrics.

Urethane bonded tinted windscreen.

Recalibrated rear springs for improved unladen ride.

Bumpstops on tailgate.

EB steering wheel and instrument cluster.

Tinted and shaded backlight.

New tonneau cover with twin bows.

Driver's footrest.

Distinctive EB style grille.

Improved power steering valving.

195 H 14 (higher speed) rated tyres.

High performance electronic tune AM/FM radiocassette player.

New, more efficient heater.

Door map pockets.

Increased sound insulation for quieter and more comfortable driving.

High security Tibbe door and ignition locks.

Redesigned door latch and striker for reduced closing effort.

Redesigned door weatherstrips.

New fuel gauge sender unit for more accurate fuel readings.

New 3.27:1 rear axle ratio.

Stone shields on rear shock absorbers.

4-wheel disc brake system.



*Up to 2100 kg towing capacity.**

independent front/Hotchkiss rear suspension and EB Series shock absorbers all round.

The new Longreach utes and van are significant not only for what has been put into them, but also for what's been left out. Namely unwanted noise and vibration.

You'll discover that Falcon Longreach rides more smoothly and quietly which will keep you a lot more relaxed during the longest stints behind the wheel.

Longreach advantages also show up in other interesting places. Like on your balance sheet, where the ute's big payload of up to 806 kg really makes its presence felt.

Longreach van provides a carrying capacity of up to 763 kg. What? You say you want to haul

even more? Okay, with just you in mind, our engineers have given Longreach a truly generous towing capacity of up to 2100 kg.*

So, throw away that other brochure, you've found your ute!

**FOR A QUALITY WORKPLACE:
FALCON LONGREACH GLi UTE
AND VAN.**

With new Falcon Longreach GLi, Ford puts more quality into the workplace of every Australian who uses a ute or van to make a living.

Look inside, you'll see that something big has happened.

Longreach GLi reflects the high standards of today's advanced EB Series Falcon sedans and wagons.

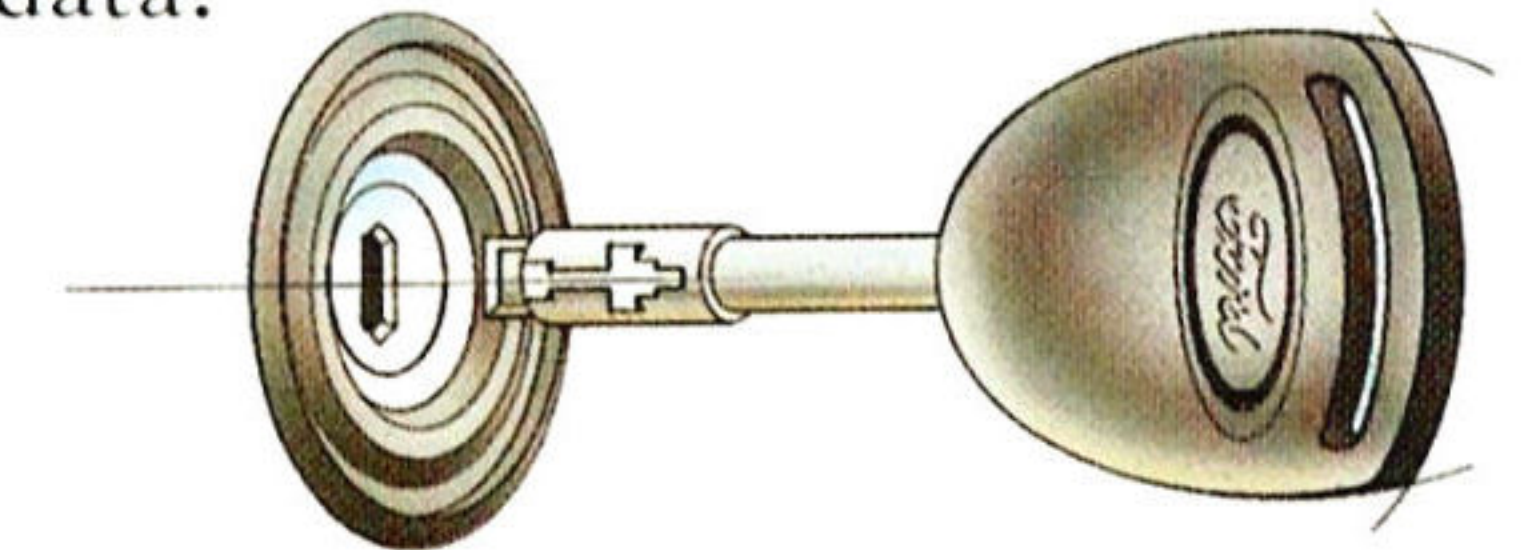
The seats are covered in good looking high grade cloth. The driver's seat has lumbar support for greater lower back comfort (bucket seat).

Instruments are bold and clean, controls are within easy reach. So is the standard electronic tune AM/FM radio/cassette player.

Falcon Longreach GLi's responsive power steering is controlled by a comfortable EB-style steering wheel. On models equipped with a floor

shift, the steering column has rake adjustment, enabling you to assume the most comfortable driving position.

Before you, clear, easy-to-read instruments monitor vital operating functions and feed back essential data.



To help prevent theft, the doors and ignition are fitted with high security "Tibbe" locks designed to frustrate even the most sophisticated attempts.

In the carrying department, Falcon Longreach GLi Ute is now equipped with a newly designed sag-resistant 2-bow tonneau cover and, to help stabilise those bulky or awkward items, load tie-down hooks.

THE VAN THAT'S ON ITS OWN.

Nowhere else will you find a 6-cylinder Aussie van with a passenger car heritage.

Falcon Longreach GLi Van gives you the traditional benefits of its sedan heritage (like handling, ride comfort, performance and safety)



Falcon Longreach GLi's spacious interior, shown with optional bench seat and column mounted gearshift.

*Subject to State and Territory regulations and vehicle specifications.



Falcon Longreach S, with centre console and comprehensive instrument display.



Falcon Longreach S interior shown with bucket seats. Driver's seat features adjustable lumbar support.

and all the GLi performance and comfort features we've already described.

FALCON LONGREACH S UTE.
IT SPORTS A LOT OF STYLE.

If you like the idea of mixing even more pleasure with your business, Falcon Longreach S is definitely the way to go.

You get all the advanced mechanical enhancements of Longreach GLi, together with a lot of head-turning style and a heap of extra features.

Falcon Longreach S rides on big 15 inch alloy road wheels fitted with 205x15 high performance tyres.

And you ride with more than a little luxury. The driver's seat has lumbar adjustment and the instrument panel has a full display of information.

There are large speedometer and tachometer dials surrounded by gauges for fuel, oil pressure, engine coolant temperature and battery voltage. In a strip below the instrument cluster are warning lights for nine separate mechanical

functions, including low coolant level and even a warning to tell you when the washer fluid is low.

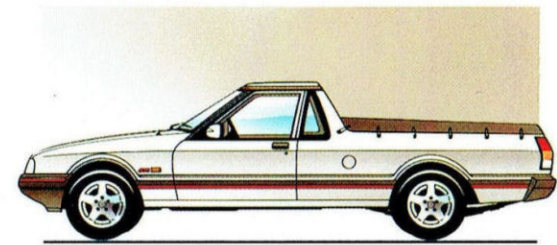
For your enjoyment, Falcon Longreach S includes a quality two channel AM/FM stereo radio/cassette player.

The system drives four speakers, and incorporates a programmed anti-theft security code which renders the unit useless to thieves.

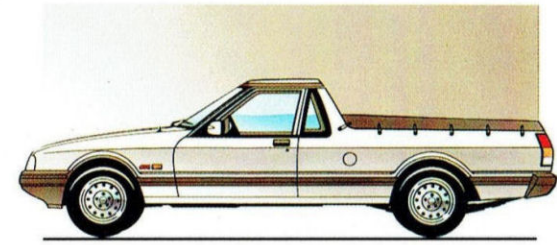
Falcon Longreach S is also equipped with electronically controlled side mirrors. These are body colour to add that extra touch of style. Footwell illumination complements the overhead interior lamp.

For your convenience, the doors are fitted with handy carpeted storage bins. The door panels are covered in hard wearing, stain-resistant cloth and have padded armrests. For rapid demisting, the tinted backlight has an inbuilt heater.

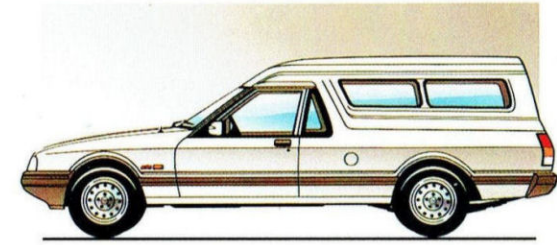
If you want a hard working ute that gives you plenty of luxury on and off the job, Falcon Longreach S is the perfect choice.



Falcon Longreach S Ute.



Falcon Longreach GLi Ute.



Falcon Longreach GLi Van.



HAVE YOU DRIVEN A FORD...LATELY?

FALCON LONGREACH S UTE.

- 4.0 litre overhead camshaft multipoint EFI 6 cylinder engine.
- 4-wheel power disc brakes.
- 5-speed manual transmission.
- 15 inch alloy road wheels.
- 205 x 15 high performance tyres.
- 4-speed electronic auto transmission (optional).
- Improved feel speed sensitive power steering.
- Up to 773 kg load capacity.
- Up to 2100 kg towing capacity (depending on State & Territory laws).
- Tonneau cover with twin bows.
- Footwell illumination.
- Carpeted door bins.
- Body colour electric side mirrors.
- Intermittent wiper function.
- Heated, tinted and shaded backlight.
- Distinctive cloth trim.
- Improved noise insulation.
- Internal load tie-downs.
- High security Tibbe door and ignition locks.
- Security coded two channel 4-speaker electronic tune AM/FM stereo radio/cassette player.
- Steering column rake adjustment.
- Speedometer.
- Tachometer.
- Temperature gauge.
- Oil pressure gauge.
- Voltmeter.
- Warning lights for 9 mechanical functions.
- Tinted windscreen.
- Bumpstops on tailgate.
- EB type shock absorbers with stone shields.
- EB style steering wheel.
- Driver's footrest.
- Driver's seat lumbar support.
- Improved unladen ride.

FALCON LONGREACH GLi UTE.

- 4.0 litre overhead camshaft multipoint EFI 6 cylinder engine.
- 4-wheel power disc brakes.
- 5-speed manual transmission.
- Optional 4-speed electronic auto transmission (floor or column shift).
- Improved feel speed sensitive power steering.
- Up to 806 kg load capacity.
- Up to 2100 kg towing capacity (depending on State & Territory laws).
- 195 x H14 higher speed rated tyres.
- Tonneau cover with twin bows.
- Internal load tie-downs.
- High security Tibbe door and ignition locks.
- Security coded 2-speaker electronic tune AM/FM radio/cassette player.
- Steering column adjustable for rake (with floor transmission).
- Warning lights for 6 mechanical functions.
- Intermittent wiper function.
- Tinted and shaded backlight.
- Attractive stain-resistant cloth trim.
- Improved noise insulation.
- Tinted windscreen.
- Bumpstops on tailgate.
- EB type shock absorbers with stone shields.
- EB style steering wheel and instrument cluster.
- Door map pockets.
- Driver's footrest.
- Driver's seat lumbar support (bucket seats).
- Improved unladen ride.

FALCON LONGREACH GLi VAN.

- 4.0 litre overhead camshaft multipoint EFI 6 cylinder engine.
- 4-wheel power disc brakes.
- 5-speed manual transmission.
- Optional 4-speed electronic auto transmission (floor or column shift).
- Improved feel speed sensitive power steering.
- Up to 763 kg load capacity.
- Up to 2100 kg towing capacity (depending on State & Territory laws).
- 195 x H14 higher speed rated tyres.
- High security Tibbe door and ignition locks.
- Security coded 2-speaker electronic tune AM/FM radio/cassette player.
- Steering column adjustable for rake (with floor transmission).
- Intermittent wiper function.
- Attractive stain-resistant cloth trim.
- EB type shock absorbers with stone shields.
- EB style steering wheel and instrument cluster.
- Door map pockets.
- Driver's footrest.
- Driver's seat lumbar support (bucket seats).
- Improved unladen ride.

This brochure is designed to provide you with a general introduction to the Ford Products (including available optional equipment) referred to, and should be read in conjunction with the latest specification sheet. Because of changes in conditions and circumstances Ford reserves the right, subject to all applicable laws, at any time, at its discretion, and without notice, to discontinue or change the features, designs, materials, colours and other specifications and the prices of their products, and to either permanently or temporarily withdraw any such products from the market without incurring any liability to any prospective purchaser or purchaser. The latest specification sheet should be referred to for information on the availability, ordering and use of optional equipment. Always consult an Authorised Ford Dealer for the latest information with respect to features, specifications, prices, optional equipment and availability before deciding to place an order. *FORD MOTOR COMPANY OF AUSTRALIA LIMITED. (A.C.N. 004 116 223) Registered Office: 1735 Sydney Road, Campbellfield, Victoria 3061, Australia. Printed March 1993.

FORD APPROVED ACCESSORIES FOR MORE FUNCTION AND STYLE.

Ford Approved Accessories are designed and engineered for Falcon Longreach and if fitted before you take delivery of your new Longreach are covered by the Ford 24 month/50,000 km Express New Vehicle Warranty.



- Air Conditioning.
- Bonnet Protector.
- Headlamp Guards.
- Fog/Driving Lamps.
- Rear Louvre (ute only).
- Car Mats.
- Mudflaps.
- Rope Rail Kit (ute only).
- Sump Guard Kit.
- Insect Screen.
- Transmission Oil Cooler.
- Towbar.
- Sunvisor.
- Weathershield.
- Sports Wheels.
- Nudge Bar.
- Pioneer Radio/Cassette.
- Bed Liner Mats.

NEW FORD FALCON LONGREACH. UTES AND VAN.



HAVE YOU DRIVEN A FORD...LATELY?



Much of what has helped to build Australia's quite unique character is embodied in a single name: *Longreach*. For this town located 1,100 kilometres north-west of Brisbane is the home of the Stockman's Hall of Fame. It is also the birthplace of a great Australian success story, Qantas. With grit and determination, Australia's legendary stockmen overcame the challenges of the outback to get the job done.

That Aussie spirit goes straight to the heart of our new Falcon Longreach utes and van.

New Falcon Longreach. It's as Aussie tough as the Falcon ute ever was. But behind that familiar face is a package bristling with 1990s' technology and refinement.

OVER 40 IMPROVEMENTS, BUT...

...you'll be relieved to know, we couldn't bring ourselves to mess with that rugged styling. Was the world ready for another cute ute? We thought not.

This decision enabled our engineers to focus on the things that really count.

The moment you depress the accelerator, you'll know they got their priorities right.

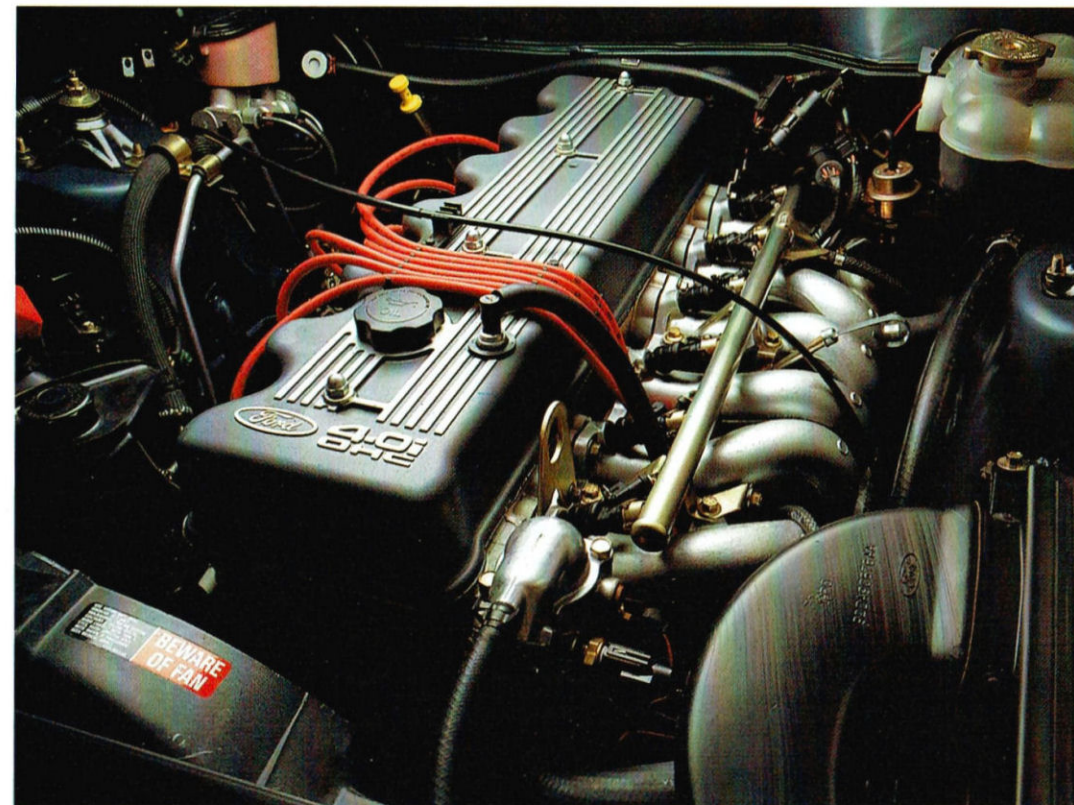
THIS WORKHORSE SUDDENLY HAS 50% MORE HORSES.

'Workhorse?' Well, yes, although 'mustang' rather than 'horse' would describe more accurately the performance and personality of the new Falcon Longreach.

The Longreach's zest for the job can be put down, basically, to the Ford 4.0 litre overhead camshaft multipoint EFI engine. It's the most powerful 6-cylinder engine ever offered in a Falcon ute or van. It's the one that powers our acclaimed EB series sedans and wagons.

This engine develops 148 kW (198 hp) @ 4,500 rpm, giving Longreach 50% more power than the model it replaces. It also produces a substantial 348 Nm of torque @ 3,750 rpm. But this 4.0 litre 6-cylinder Ford engine isn't only about power and torque. It also concerns technical refinement, smoothness, efficiency and reliability.

The engine's operating systems, including the multipoint electronic fuel injection, are maintained at peak efficiency by Ford's advanced EEC4



computerised management unit.

The alloy cylinder head, combustion chamber design, and piston and valve technology all reflect Ford's position at the forefront of automotive engineering.

All this gives Longreach a decided edge in the area that matters most: your driving satisfaction. And, if you know your utes, you've probably already figured out that Longreach offers over 20 kW more power than that other 6-cylinder ute.

The 4.0 litre engine is matched to a new 5-speed manual transmission developed for the EB series Falcons. Gear changes are smooth, positive, easy.

However, if you reckon that automatic is the only way to go, Longreach comes with a very pleasant surprise: Ford's distinguished and efficient electronic 4-speed automatic

transmission, available as an option. It's noted for its smooth driveability and excellent fuel consumption.

Consistent with the notion that a little fun is good for the soul, both transmissions deliver impressive off-the-mark performance thanks to Longreach's 3.27:1 rear axle ratio. And you have a choice of floor or column gearshift locations.

Something else you'll notice: the improved response and feel of the power steering on Longreach. The power steering is also backed by a cooling system to maintain it at peak operating efficiency.

Not only does this Falcon really go, it also stops with the absolute authority of four wheel power disc brakes.

Falcon Ute is as tough as it's always been. Even tougher. But tough doesn't mean rough. Longreach delivers excellent ride comfort thanks to the

Optional electronic 4-speed automatic transmission. (Column shift also available.)



TEST DRIVE THESE MAJOR IMPROVEMENTS.

4.0 litre overhead camshaft multipoint EFI engine.

Driver's footrest.

New 4-speed electronic automatic transmission (optional).

New 5-speed manual transmission (with 10 inch clutch).

EB steering wheel and instrument cluster.

Driver's seat lumbar support, stain resistant fabrics.

Urethane bonded tinted windscreens.

Tinted and shaded backlight.

Recalibrated rear springs for improved unladen ride.

New tonneau cover with twin bows.

Bumpstops on tailgate.

Distinctive EB style grille.

Improved power steering valving.

195 H 14 (higher speed) rated tyres.

High performance electronic tune AM/FM radiocassette player.

New, more efficient heater.

Increased sound insulation for quieter and more comfortable driving.

High security Tibbe door and ignition locks.

Redesigned door latch and striker for reduced closing effort.

Redesigned door weatherstrips.

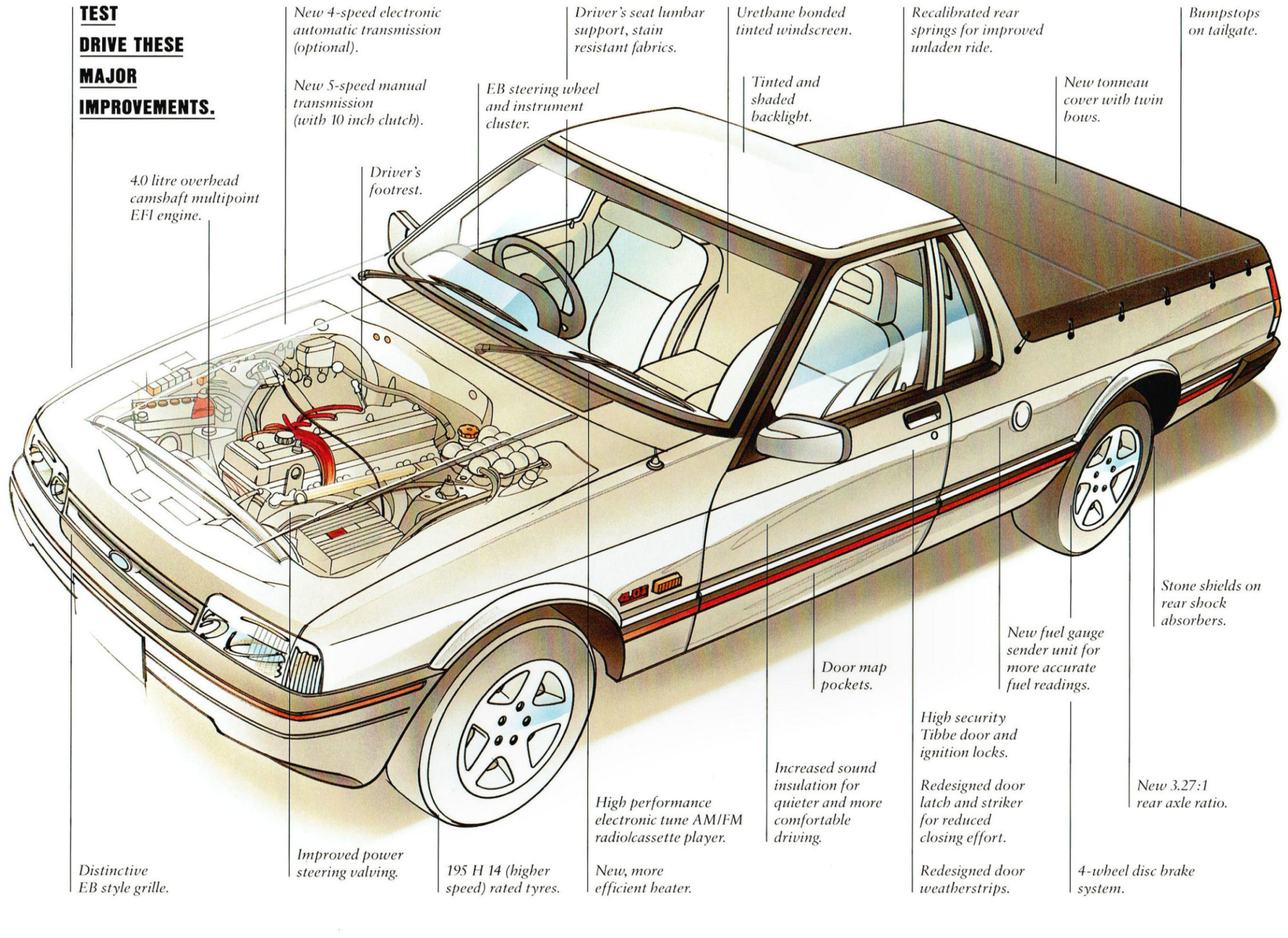
Door map pockets.

New fuel gauge sender unit for more accurate fuel readings.

Stone shields on rear shock absorbers.

New 3.27:1 rear axle ratio.

4-wheel disc brake system.



Up to 2100 kg towing capacity.*

independent front/Hotchkiss rear suspension and EB Series shock absorbers all round.

The new Longreach utes and van are significant not only for what has been put into them, but also for what's been left out. Namely unwanted noise and vibration.

You'll discover that Falcon Longreach rides more smoothly and quietly which will keep you a lot more relaxed during the longest stints behind the wheel.

Longreach advantages also show up in other interesting places. Like on your balance sheet, where the ute's big payload of up to 806 kg really makes its presence felt.

Longreach van provides a carrying capacity of up to 763 kg. What? You say you want to haul

even more? Okay, with just you in mind, our engineers have given Longreach a truly generous towing capacity of up to 2100 kg.*

So, throw away that other brochure, you've found your ute!

FOR A QUALITY WORKPLACE: FALCON LONGREACH GLI UTE AND VAN.

With new Falcon Longreach GLI, Ford puts more quality into the workplace of every Australian who uses a ute or van to make a living.

Look inside, you'll see that something big has happened.

Longreach GLI reflects the high standards of today's advanced EB Series Falcon sedans and wagons.

The seats are covered in good looking high grade cloth. The driver's seat has lumbar support for greater lower back comfort (bucket seat).

Instruments are bold and clean, controls are within easy reach. So is the standard electronic tune AM/FM radio/cassette player.

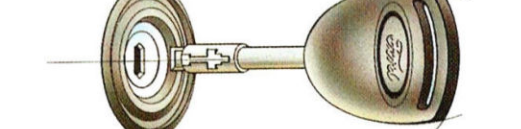
Falcon Longreach GLI's responsive power steering is controlled by a comfortable EB-style steering wheel. On models equipped with a floor



Falcon Longreach GLI's spacious interior, shown with optional bench seat and column mounted gearshift.

shift, the steering column has rake adjustment, enabling you to assume the most comfortable driving position.

Before you, clear, easy-to-read instruments monitor vital operating functions and feed back essential data.



To help prevent theft, the doors and ignition are fitted with high security "Tibbe" locks designed to frustrate even the most sophisticated attempts.

In the carrying department, Falcon Longreach GLI Ute is now equipped with a newly designed sag-resistant 2-bow tonneau cover and, to help stabilise those bulky or awkward items, load tie-down hooks.

THE VAN THAT'S ON ITS OWN.

Nowhere else will you find a 6-cylinder Aussie van with a passenger car heritage.

Falcon Longreach GLI Van gives you the traditional benefits of its sedan heritage (like handling, ride comfort, performance and safety)

*Subject to State and Territory regulations and vehicle specifications.

Standard Equipment: Ford Longreach Falcon Ute and Van

FEATURES:	Falcon GLi Ute	Falcon S Ute	Falcon GLi Van	FEATURES:	Falcon GLi Ute	Falcon S Ute	Falcon GLi Van	FEATURES:	Falcon GLi Ute	Falcon S Ute	Falcon GLi Van
MECHANICAL*				EXTERIOR (continued)				INTERIOR (continued)			
4.0 litre OHC engine with multipoint electronic fuel injection	•	•	•	Colour keyed right and left hand exterior rear view mirrors, each with electronic interior remote control		•		Driver and passenger seat fore/aft and rake adjustment	•	•	•
Electronic engine control (EEC4) system	•	•	•	Two speed front windscreen wipers with intermittent setting and demand wash/demand wipe feature	•	•	•	Driver's seat lumbar support adjustment	•	•	•
5-speed manual floor shift transmission	•	•	•	Dual jet windscreen washers	•	•	•	Driver and passenger seat infinitely adjustable recline	•	•	•
Power assisted steering	•	•	•	Tinted band laminated windscreen	•	•	•	Adjustable front headrests	•	•	•
Short and long arm front suspension	•	•	•	Heated backlight		•		Driver's left footrest	•	•	•
Hotchkiss rear suspension	•	•	•	Tinted and shaded backlight	•	•	•	Doors trimmed in vinyl with cloth covered armrest insert	•		•
Front stabiliser bar	•	•	•	Tinted side/rear glass	•	•	•	Doors trimmed in cloth		•	
Four wheel disc brakes	•	•	•	Quarter side rear windows			•	Door activated courtesy light	•	•	•
<i>* For available optional equipment see reverse side</i>				Drop down tailgate with levelling cable	•	•		Adjustable instrument panel illumination	•	•	•
EXTERIOR				Split rear barn doors			•	Illuminated and lockable glove box	•	•	•
Grey front bumper (bright insert) and rear bumperettes	•		•	Lock down radio aerial	•	•	•	Footwell illumination		•	
Grey front bumper (red inserts) and rear bumperettes		•		Internal load tiedowns	•	•		Cigar lighter and ashtray	•	•	•
Body coloured hood grille	•	•	•	Rear shock absorber stone shields	•	•	•	Four speed fan boosted ventilation with footwell ducts	•	•	•
Grey upper and lower valance	•	•	•	INTERIOR				Electronic tuning AM/FM stereo radio/cassette with two speakers, auto reverse, auto scan memory storage and security code feature	•		•
Wide section grey bodyside protection mouldings	•		•	High security locking system featuring "Tibbe" locks on doors and ignition and strengthened steering column lock housing	•	•	•	Electronic tuning AM/FM stereo radio/cassette with four speakers, auto reverse, auto scan memory storage and security code feature		•	
Wide section grey bodyside protection mouldings with red inserts		•		"Soft Feel" steering wheel	•	•	•	Carpeted passenger compartment floor		•	
Tonneau cover	•	•		Adjustable rake steering column	•	•	•	Warning Lights: high beam, low oil pressure, lights on, alternator, brake failure, park brake on, low fuel	•	•	•
P195/75 SR14 steel belt radial ply tyres	•		•	Prismatic day/night interior rear view mirror	•	•	•	Gauges: speedometer, odometer, tripmeter, fuel gauge and water temperature gauge	•	•	•
P205/65 HR15 steel belt radial ply tyres		•		Vinyl covered sunvisors	•	•	•	Additional Gauges: tachometer, battery voltage and oil pressure		•	
14x6JJ styled steel wheel (12 hole)	•		•	Open storage centre console (with floor transmissions)	•		•	Inertia reel seat belts	•	•	•
— bright wheel trim ring	•		•	Lidded bin centre console		•		Single horn	•	•	•
15" x 7.0" JJ sports alloy wheels		•		Door map pockets	•	•	•				
Rectangular halogen headlamps with integrated indicator and park lamps	•	•	•	Digital clock on radio	•	•	•				
Black foldaway right and left hand exterior rear view mirrors, each with manual interior remote control	•		•	Tivoli cloth trim with Saville cloth insert	•		•				
				Olympiad cloth trim with coordinated plain bolster		•					
				Bucket seats	•	•	•				

Have you driven a Ford...lately?

FORD LONGREACH FALCON UTE AND VAN



Specifications

FORD LONGREACH FALCON UTE AND VAN

Engine	4.0 Litre	
Power (DIN kW)	148 / 4500	
Torque (DIN Nm)	348 / 3750	
Cylinder Head Material	Aluminium alloy with sintered iron valve seat inserts	
Cylinders	6 in line	
Fan	Temperature sensitive viscous clutch	
Bore (mm)	92.26	
Stroke (mm)	99.3	
Capacity	3984	
Valve Gear	Overhead valves with hydraulic tappets	
Camshaft Drive	Chain drive	
Compression Ratio	8.77 : 1	
Cooling	High capacity radiator	

Suspension

Front	<ul style="list-style-type: none"> Independent short/long arm Single rate coil springs Twin tube telescopic shock absorbers mounted co-axially within the coil springs 22mm diameter stabiliser bar 	Rear	<ul style="list-style-type: none"> Rigid axle Hotchkiss suspension 6-leaf springs Twin tube telescopic shock absorbers
-------	---	------	--

Dimensions

Exterior (mm)	UTE	VAN
Overall length	4920	4923
Overall width	1860	1860
Overall height	1388	1604
Wheelbase	2957	2957
Track — Front	1552	1552
— Rear	1525	1525

Load area (mm)

— Max. load length (tailgate down)	2696	
— Max. load length (tailgate closed)	2134	2134
— Load height (unladen)	579	579
— Wheelarch spacing	1159	1159

General

Usable fuel tank capacity (litres)	68	68
Turning circle (m) — diameter	11.8m	11.8m
Cubic capacity	1.1m ³	2.8m ³

Options

FORD LONGREACH FALCON UTE AND VAN

Engine/Transmission Combinations

Engine	Transmission	Notes	Falcon GLi Ute	Falcon S Ute	Falcon GLi Van
4.0 Litre	5 speed manual floor shift		STD	STD	STD
	4 speed electronic column auto	(a)	OPT	N/A	OPT
	4 speed electronic T-Bar auto	(b)	OPT	OPT	OPT

Convenience

Integrated Air Conditioning		OPT	OPT	OPT
Centafold Seat	(a)	OPT	N/A	OPT
Class I Towing Pack	(c)	OPT	OPT	OPT
Vinyl Seat Trims	(d)	OPT	N/A	OPT
Prestige Paint	(e)	OPT	OPT	N/A

Performance

Limited Slip Differential		OPT	OPT	OPT
---------------------------	--	-----	-----	-----

Cargo/Towing (Subject to Applicable Legislation and Tow Bar Capacity)

Payload (kgs)	Load Capacity	G.V.M.	Rear Maximum Axle Load
Utility	— GLi (Bench Seat)	806	2232
	— GLi (Bucket Seat)	799	2232
	— S (Bucket Seat)	773	2232
Van	— GLi (Bench Seat)	763	2232
	— GLi (Bucket Seat)	756	2232

Towing (c)	Factory Fitted Class I Towing Pack	Class II Towbar †
Falcon GLi Utility/Van	1200kg	2100kg
Falcon S Utility	1200kg	2100kg

† A Ford approved 2100kg capacity Class II towbar is available from Ford dealers.

OPT - Optional at extra cost. STD - Standard equipment. N/A - Not available.

About this specification sheet. This sheet is designed to provide you with selected specification data for the Ford Products which have been described in a general way in the relevant brochure. Because of changes in conditions and circumstances Ford* reserves the right, subject to all applicable laws, at any time, at its discretion, and without notice to discontinue or change the features, designs, materials, colours and other specifications and the prices of its products, and to either permanently or temporarily withdraw any such products from the market without incurring any liability to any prospective purchaser or purchaser.

Because of variations which occur in manufactured products, all capacities, measurements, dimensions and weights quoted in the relevant brochure and this specification sheet should be taken as approximate only.

Always consult an Authorised Ford Dealer for the latest information with respect to features, specifications, prices, optional equipment and availability before deciding to place an order.

*FORD MOTOR COMPANY OF AUSTRALIA LIMITED

A.C.N. 004 116 223

Registered office:

1735 SYDNEY ROAD, CAMPBELLFIELD, VICTORIA, 3061.

Footnotes:

- Centafold front seat is standard on Falcon GLi Ute and Van when a column shift automatic is ordered. Centafold is not available with a floor shift transmission and centre console.
- Floor carpet on Falcon GLi Ute and Van is standard when T-Bar automatic transmission with centre console is specified.
- The Towing Pack is a factory-fitted option and provides a towing capacity of 1200 kgs when used in conjunction with a suitable caravan or trailer braking system and towing equipment. This pack consists of:
 - Tow bar
 - Gooseneck
 - Wiring harness with 7 pin electrical connector
 - Transmission oil cooler (automatic transmissions only).

Note: The caravan or trailer braking system and any other items (such as the tow ball, load levelling devices and safety chains) required for the attachment of a trailer, caravan or the like to the vehicle are not supplied as part of the Pack, and must be purchased at extra cost or be supplied by the purchaser of the vehicle.

The Towing Pack is designed to be incorporated in the vehicle during the assembly of the vehicle. The actual towing capability and performance of a vehicle will depend upon many factors including the suitability of the caravan, trailer etc., the condition of the vehicle, the vehicle load, the vehicle specifications (including engine capacity, transmission type, axle ratio, tyre type and size), weather conditions, road gradient, terrain and other prevailing conditions.

A towing accessory is also available for fitment from your Authorised Ford Dealer. A Ford-approved transmission oil cooler must be fitted in conjunction with any towing accessory fitted to automatic vehicles and used to tow a gross weight of more than 500 kgs. Consult your Authorised Ford Dealer for the latest information with respect to the specifications and the availability of this accessory towing pack.

- Vinyl seat trim is available in both bucket and centafold seat configurations.
- Consult the Ford colour selector or your Authorised Ford Dealer to determine which colours are available in metallic paint.

Have you driven a Ford... lately?

PRINTED MARCH 1993

