

**WHAT WE DO**  
**TO EARN**  
**THE WINGS.**



**HAVE YOU DRIVEN A FORD...LATELY?**

# EVERYONE'S A WINNER.

Here is a full list of Tickford options currently available.

Fitting any one will not only add to your enjoyment but also add to the value of your car.

And whether you choose to specify one of the suspension options, sunroof, a tow pack, body styling kit, LPG or the 16" wheels, the warranty cover of your new Ford is not affected in any way.

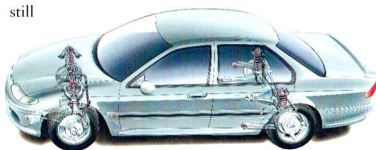
What's more you will still receive all the benefits of Fordcare and the options themselves, when fitted prior to delivery, are also all fully covered by the 24 month/50000 km Ford Express New Vehicle Warranty.

## **TOURING SUSPENSION**

The Touring Suspension has been designed for Fairlane Ghia and LTD. With special springs, shock absorbers, stabiliser bars and linkages, it places more emphasis on responsive handling, while retaining a ride quality expected by drivers of Fairlane and LTD.

## **SPORTS SUSPENSION**

Outstanding comfort and responsive handling are qualities that come standard in Falcon. With a Sports Suspension, that handling is improved even further. Stiffer front and rear springs, sports tuned shock absorbers and bushes, and revised wheel alignment combine to produce razor-sharp handling and a low stance on the road while retaining good ride quality.



## **16" WHEELS AND TYRES**

Aggressive 16" x 7" five spoke alloy wheels fitted with high performance Michelin 225/50 VR 16 tyres. Designed to fully utilise vehicle handling and provide a bolder appearance. (Available only with the Sports Suspension or Touring Suspension packs.)

## **BODY STYLING KIT**

Includes side skirts, front and rear aprons for the bumper bars designed to enhance the standard

raised deck lid spoiler with integrated high mounted stop light. Improves aerodynamic performance and gives your new car a sensational appearance.

Designed by Ford's own styling department to be fully integrated with the new Falcon.

## **1600 kg RATED TOW PACK\***

Specifically designed for Falcon. 1600 kg capacity. Includes the towbar with painted tongue, wiring harness, 7-pin connector, reinforcement brackets, and transmission oil cooler for automatic transmissions.

## **2300 kg TOW PACK\***

2300 kg rated capacity. Features Heavy Duty towbar and Load Distributing Hitch, trailer wiring kit, revised turn signal flasher, and transmission oil cooler.

## **HEAVY DUTY TOW PACK\***

For those who already have a 2100 kg or 2300 kg Load Distributing Hitch and who want a compatible towbar on their new Ford. Features Heavy Duty Towbar (2300 kg rated capacity when used with 2300 kg Load Distributing Hitch), trailer wiring

kit, revised turn signal flasher, transmission oil cooler for automatic transmissions, and a 1600 kg rated capacity plug-in tow ball mount.

### SUNROOF

Precision crafted electric glass sunroof fully imported from Germany. Versatile operation – as a tilted vent to assist ventilation, and partially or fully open to increase your enjoyment of the great outdoors. Automatic pop-up wind deflector minimises wind noise and buffeting.

### LPG

Closed loop system developed jointly by Ford and TVE and tuned specifically for Falcon. Available with fully integrated dash mounted fuel changeover switch, dual system fuel gauge, reliable 'petrol always' starting system. Completely compatible with Falcon's *Smartlock* security system. This is the only factory fitted and warranted LPG system available for your Falcon.

### FORDCARE

All Ford vehicles sold through-out Australia are backed by Fordcare after sales service.

Fordcare comprises a number of programs, products and services designed exclusively for Ford vehicles and their drivers.

These include technical support, diagnostic equipment, approved Ford/Motorcraft replacement parts and service warranties described inside this brochure.



Ford, Winner Australian Quality Award 1993

FALCON FAMILY OPTIONS	FALCON GLI		FALCON FUTURA		FALCON XRG		FALCON	FAIRMONT		FAIRMONT GHIA	FAIRLANE GHIA	LTD
	Sedan	Wagon	Sedan	Wagon	Sedan	Wagon	XR8	Sedan	Wagon			
Sports Suspension	▲		▲					▲		▲		
Touring Suspension											▲	▲
Sunroof	▲		▲		▲		▲	▲		▲	▲	
16" Wheel & Tyres	●		●		▲	▲	▲	●		●	●	
Body Styling Kit	▲		▲		▲		▲	▲		▲		
2300kg Tow Pack	▲■	▲■	▲■	▲■	▲■	▲■	▲■	▲■	▲■	▲■	▲■	▲■
Heavy Duty Tow Pack	▲■	▲■	▲■	▲■	▲■	▲■	▲■	▲■	▲■	▲■	▲■	▲■
LPG	§		§					§		§		

▲ Available ● Available only in conjunction with a suspension kit § Only available on six cylinder automatic ■ Only available on automatic

This brochure is designed to provide you with a general introduction to the Ford Products (including available optional equipment) referred to, and should be read in conjunction with the latest specification sheet. Because of changes in conditions and circumstances Ford reserves the right, subject to all applicable laws, at any time, at its discretion, and without notice, to discontinue or change the features, designs, materials, colours and other specifications and the prices of its products, and to either permanently or temporarily withdraw any such products from the market without incurring any liability to any prospective purchaser or purchaser. The latest specification sheet should be referred to for information on the availability, ordering and use of optional equipment. Always consult an Authorised Ford Dealer for the latest information with respect to features, specifications, prices, optional equipment and availability before deciding to place an order. \*FORD MOTOR COMPANY OF AUSTRALIA LIMITED, (A.C.N. 004 116 223) Registered Office: 1735 Sydney Road, Campbellfield, Victoria 3061, Australia. <sup>†</sup>Subject to State and Territory regulations.



**HAVE YOU DRIVEN A FORD...LATELY?**



FORD. PROUD SPONSOR OF THE AUSTRALIAN OLYMPIC TEAM.



# EVERYONE'S A WINNER.

Here is a full list of Tickford options currently available.

Fitting any one will not only add to your enjoyment but also add to the value of your car.

And whether you choose to specify one of the suspension options, sunroof, a tow pack, body styling kit, LPG or the 16" wheels, the warranty cover of your new Ford is not affected in any way.

What's more you will receive all the benefits of Fordcare and the options themselves, when fitted prior to delivery, are also all fully covered by the 24 month/50000 km Ford Express New Vehicle Warranty.

## TOURING SUSPENSION

The Touring Suspension has been designed for Fairlane Ghia and LTD. With special springs, shock absorbers, stabiliser bars and linkages, it places more emphasis on responsive handling, while retaining a ride quality expected by drivers of Fairlane and LTD.

## SPORTS SUSPENSION

Outstanding comfort and responsive handling are qualities that come standard in Falcon. With a Sports Suspension, that handling is improved even further. Stiffer front and rear springs, sports tuned shock absorbers and bushes, and revised wheel alignment combine to produce razor-sharp handling and a low stance on the road while retaining good ride quality.

## 16" WHEELS AND TYRES

Aggressive 16" x 7" five spoke alloy wheels fitted with high performance Michelin 225/50 VR 16 tyres. Designed to fully utilise vehicle handling and provide a bolder appearance. (Available only with the Sports Suspension or Touring Suspension packs.)

## BODY STYLING KIT

Includes side skirts, front and rear aprons for the bumper bars designed to enhance the standard

raised deck lid spoiler with integrated high mounted stop light. Improves aerodynamic performance and gives your new car a sensational appearance. Designed by Ford's own styling department to be fully integrated with the new Falcon.

## 1600 kg RATED TOW PACK\*

Specifically designed for Falcon. 1600 kg capacity. Includes the towbar with painted tongue, wiring harness, 7-pin connector, reinforcement brackets, and transmission oil cooler for automatic transmissions.

## 2300 kg TOW PACK\*

2300 kg rated capacity. Features Heavy Duty towbar and Load Distributing Hitch, trailer wiring kit, revised turn signal flasher, and transmission oil cooler.

## HEAVY DUTY TOW PACK\*

For those who already have a 2100 kg or 2300 kg Load Distributing Hitch and who want a compatible Heavy Duty Towbar (2300 kg rated capacity when used with 2300 kg Load Distributing Hitch), trailer wiring

kit, revised turn signal flasher, transmission oil cooler for automatic transmissions, and a 1600 kg rated capacity plug-in tow ball mount.

## SUNROOF

Precision crafted electric glass sunroof fully imported from Germany. Versatile operation - as a tilted vent to assist ventilation, and partially or fully open to increase your enjoyment of the great outdoors. Automatic pop-up wind deflector minimises wind noise and buffeting.

## LPG

Closed loop system developed jointly by Ford and TVE and tuned specifically for Falcon. Available with fully integrated dash mounted fuel changeover switch, dual system fuel gauge, reliable 'petrol always' starting system. Completely compatible with Falcon's Smartlock security system. This is the only factory fitted and warranted LPG system available for your Falcon.

## FORDCARE

All Ford vehicles sold through-out Australia are backed by Fordcare after sales service. Fordcare comprises a number of programs, products and services designed exclusively for Ford vehicles and their drivers. These include technical support, diagnostic equipment, approved Ford/Motorcraft replacement parts and service warranties described inside this brochure.



FALCON FAMILY OPTIONS	FALCON GLI		FALCON FUTURA		FALCON XRG		FALCON XR8	FAIRMONT		FAIRMONT GHIA	FAIRLANE GHIA	LTD
	Sedan	Wagon	Sedan	Wagon	Sedan	Wagon	XR8	Sedan	Wagon			
Sports Suspension	▲		▲					▲		▲		
Touring Suspension											▲	▲
Sunroof	▲		▲		▲		▲	▲		▲	▲	
16" Wheel & Tyres	●		●		▲	▲	▲	●		●	●	
Body Styling Kit	▲		▲		▲		▲	▲		▲		
2300kg Tow Pack	▲■	▲■	▲■	▲■	▲■	▲■	▲■	▲■	▲■	▲■	▲■	▲■
Heavy Duty Tow Pack	▲■	▲■	▲■	▲■	▲■	▲■	▲■	▲■	▲■	▲■	▲■	▲■
LPG	§		§					§		§		

▲ Available ● Available only in conjunction with a suspension kit § Only available on six cylinder automatic ■ Only available on automatic

This brochure is designed to provide you with a general introduction to the Ford Products (including available optional equipment) referred to, and should be read in conjunction with the latest specification sheet. Because of changes in conditions and circumstances Ford reserves the right, subject to all applicable laws, at any time, at its discretion, and without notice, to discontinue or change the features, designs, materials, colours and other specifications and the prices of its products, and to either permanently or temporarily withdraw any such products from the market without incurring any liability to any prospective purchaser or purchaser. The latest specification sheet should be referred to for information on the availability, ordering and use of optional equipment. Always consult an Authorised Ford Dealer for the latest information with respect to features, specifications, prices, optional equipment and availability before deciding to place an order. \*FORD MOTOR COMPANY OF AUSTRALIA LIMITED. (A.C.N. 004 116 223) Registered Office: 1735 Sydney Road, Campbellfield, Victoria 3061, Australia. <sup>†</sup>Subject to State and Territory regulations.



HAVE YOU DRIVEN A FORD...LATELY?



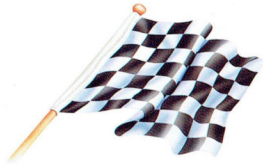
FORD. PROUD SPONSOR OF THE AUSTRALIAN OLYMPIC TEAM.

# WHAT WE DO TO EARN THE WINGS.



HAVE YOU DRIVEN A FORD...LATELY?





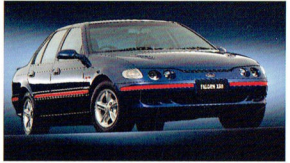
It's fitting that wings are the symbol of the Tickford Engineering Company as it is a company long associated with the building of high performance cars.

In England, where the company originated, it was heavily involved with developing such renowned high performance marques as the Aston Martin and, more lately, the Ford Escort RS200.

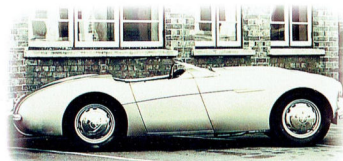


best there is in all round performance. It perfectly sums up the Tickford philosophy of 'Total Engineering' with engine, suspension, transmission and stopping power all being enhanced by the very latest in specialist knowledge.

However, Tickford developed options are also available to buyers of Falcon GLi and Futura, Fairmont, Fairmont Ghia, Fairlane Ghia and LTD models. What's more, being specially developed for your Ford, they can be included into your new car as part of the build process, assuring correct fit and compatibility.



# A COMPANY BUILT FOR PERFORMANCE.



In this country the name gained major prominence when it helped develop the Ford Sierra Cosworth touring cars in which Dick Johnson and Glenn Seton

powered round the race circuits of Australia.

It is a name also proudly carried by the Ford Capri Clubsport, reckoned by many to be, pound for pound, the best performing small car ever built in Australia.

And a company proud to be associated with the much sought after collector's car, the Falcon GT.

The Tickford name is probably best known, though, for its association with the Ford Falcon XR series.

This is a range of high performance vehicles jointly developed by Ford and Tickford to give the seeker of high performance saloon cars the very

