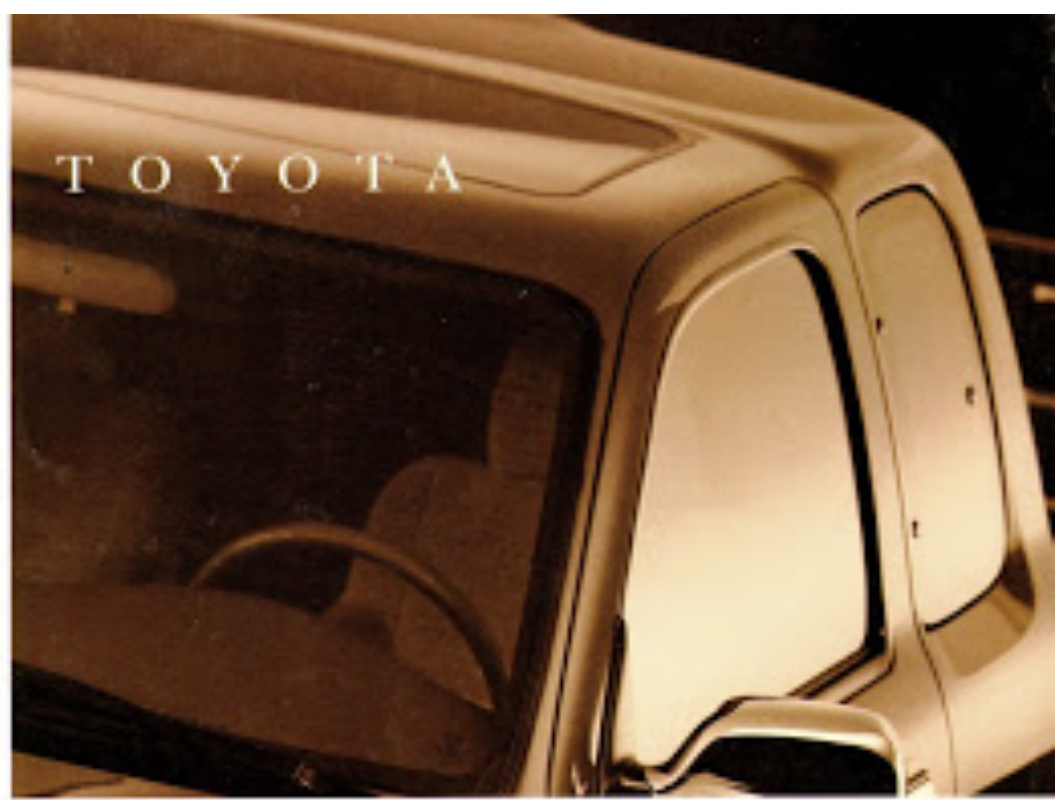


1995 1/2

TOYOTA

# Tacoma



# It's the arrival of the FITTEST.

## IT'S THE ALL-NEW TACOMA

compact pickup truck, taking Toyota's legendary reputation even further. It's increased power in an entire line of exceptional engines. Like Tacoma's muscular 190-hp V6 with a power-to-weight ratio that provides quickness and strength — up to 5,000 lbs. towing capacity.\* It's increased performance. Tacoma's independent coil-spring, double-wishbone suspension is totally redefining what it means to "drive like a truck." And it's payload. A hefty 1,640 lbs. for the 4x2 Regular Cab and a substantial 1,860 for 4x4 V6.\*\*

N O W, S T O P for a moment and admire Tacoma's confident presence. Its bold, athletic stance. Notice its rounded shape, conditioned to slice efficiently through the air. With its roomy passenger space, long wide bed and a host of technical innovations, Tacoma has established new territory for the compact truck world. Toyota has been the number-one-selling compact 4x4 in America for 14 years\* and counting. Tacoma has arrived!

\*See Towing Specifications Chart on page 7 for further details.

\*\*Including occupants, equipment and cargo with 1-speed manual transmission.  
W.L. Pab & Co., representatives 1-800-255-2525



4x4 XTRACAB SR5 V6 AND 4x2 SX | 3



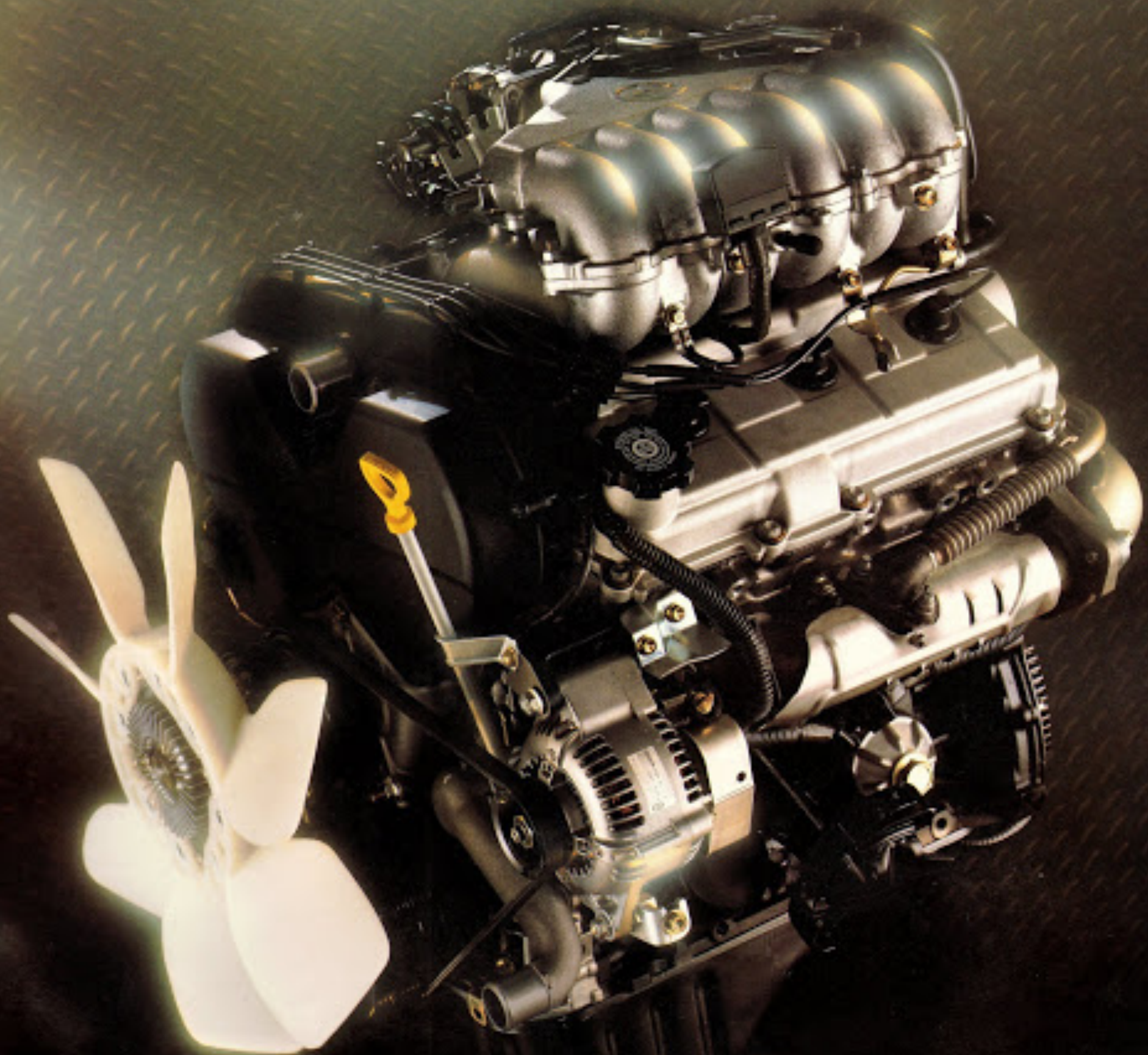
*Trucks not shown. SX V6 shown in Cobalt Blue Pearl, and Tacoma 4x2 shown in Ponder Blue Metallic with optional SV Package and rear bumper accessory. Both shown with optional equipment.*



4x4 XTRACAB SR5 V6 | 5



*Tacoma 4x4 XTRACAB SR5 V6 shown in Cobalt Blue Pearl with optional equipment.*



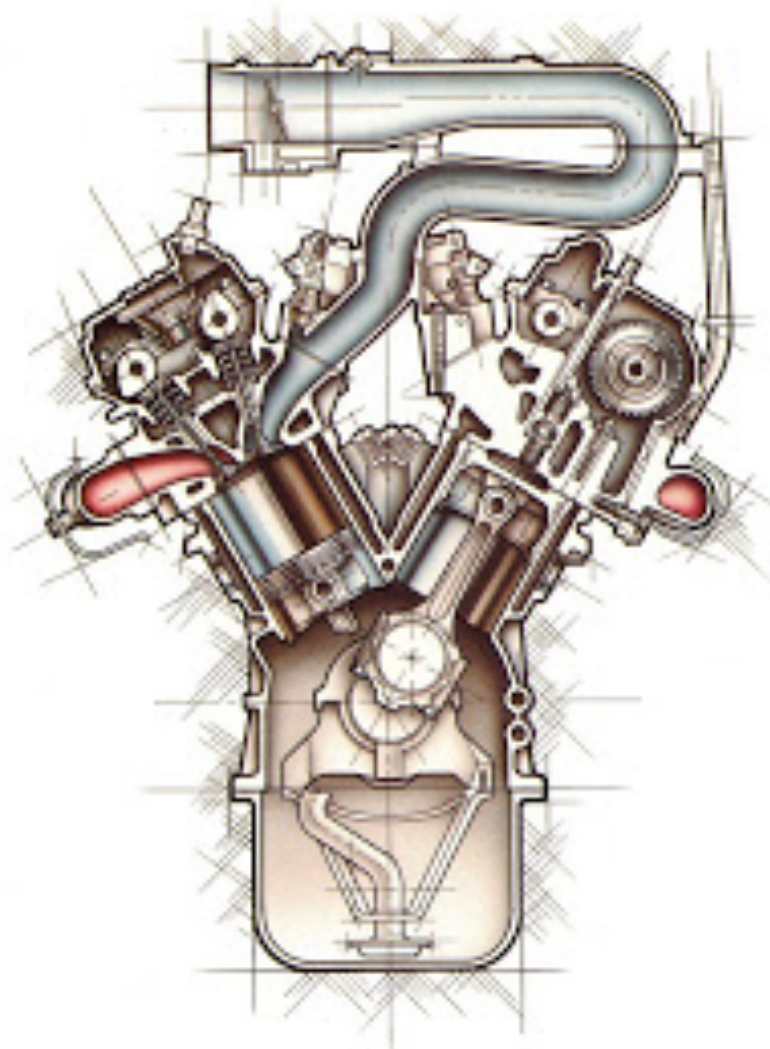
soul of a WINNER.



**The powerful Tacoma**

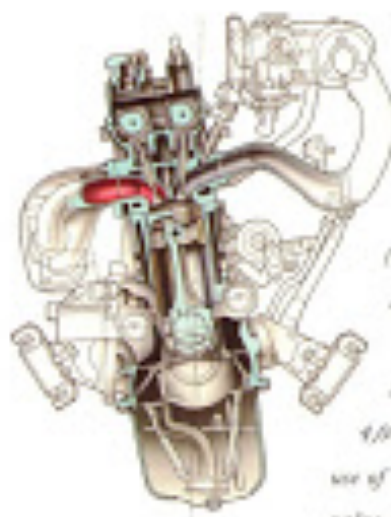
**300-hp 2.4-liter V6 engine**

features dual overhead cams, 4-valves-per-cylinder and Toyota's Distributorless Direct Ignition System. The result is high performance and lower fuel consumption\* with increased torque (220 lbs.) in the vital low- and mid-range speeds.



**Tacoma's efficient 2.4-liter**

**4-cylinder engine (4x2 models only) puts out a strong 162 hp @ 5,000 rpm and 160 lb.-ft. of torque @ 4,000 rpm with the economical mpg\* of a 4-cylinder.**



**Tacoma's rugged 2.7-liter 4-cylinder engine**

(4x4 models only) delivers 150 hp @ 4,800 rpm and 177 lb.-ft. of torque @ 4,000 rpm through the use of sophisticated multi-valve design. It has the strength, dependability and efficiency to outfit your 4x4 needs and keep you going.

**IT'S A TOYOTA TRADITION.**

A superior line of powerful engines with technology that offers substantial standard horsepower, quiet operation, fuel efficiency\* and legendary reliability. Consider, for example, the 3.4-liter four-cam 24-valve V6 electronically fuel-injected (EFI) engine that delivers 190 hp at 4,800 rpm and 220 lb.-ft. of torque at 3,600 rpm. When it comes to speed and endurance, you're tapping into exceptional power and serious torque response, both the result of multi-valve technology and a longer, tuned intake system. Tacoma's 2.7-liter 4-cylinder engine delivers a hefty 150 hp and 177 lb.-ft. of torque at 4,000 rpm. Balance shafts help reduce noise, vibration and harshness (NVH). And the 4x2 model's 2.4-liter engine is more powerful than some V6s, yet still offers the economy of a 4-cylinder.\* All Toyota engines are built to add strength to the tradition of Toyota's renowned durability.



\*See EPA mileage estimates on page 55 for details.

It's quick reflexes and extraordinary

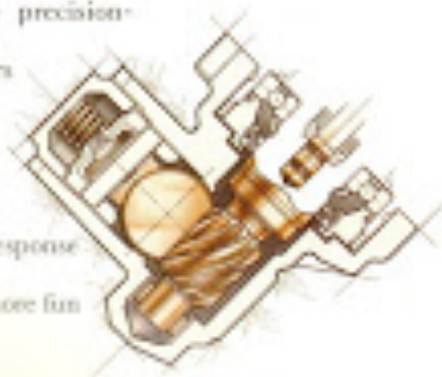
TOYOTA'S RESEARCH AND

DEVELOPMENT is paying off on the toughest proving ground of all—real life. From freeways to mountain trails, Tacoma shows impressive skills. Fully independent coil-spring, double-wishbone suspension helps keep your front wheels in constant contact with the driving surface and improves cornering on- and off-road. Heavy-duty rear leaf springs provide a more comfortable ride and greater handling stability when carrying large loads. Tacoma 4x4 reaches new levels of performance with its high ground clearance of 12.0 inches\* and impressive 17 inches of front wheel travel.

TACOMA'S TURNING RADIUS

is considerably tighter than most leading competitive 4x4's, allowing more control when maneuvering out of tight spots. Standard on all Tacomas is high-performance rack-and-pinion steering with precision-

machined gears to deliver a more positive feel, quicker response and it's a lot more fun to drive.



\*With second row folded down.





C O O R D I N A T I O N .

T O Y O T A T E C H N O L O G Y | 9



Tacoma 4x2 shown. MSRP shown in Super Red Pearl with optional equipment and rear bumper accessory.

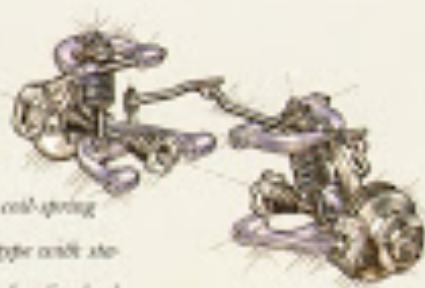
# It's the making of a CHAMPION.

**IT'S THE ENGINEERING** behind the metal. Tacoma's tough anti-corrosive steel frame resists rusting. New high-tensile-strength steel plates are used for all Tacoma outer body panels, balancing lighter weight with resistance to dents. And on the inside, Tacomas are kept more quiet with the use of a dash silencer and asphalt composite sheets that are applied to most of the floor area.

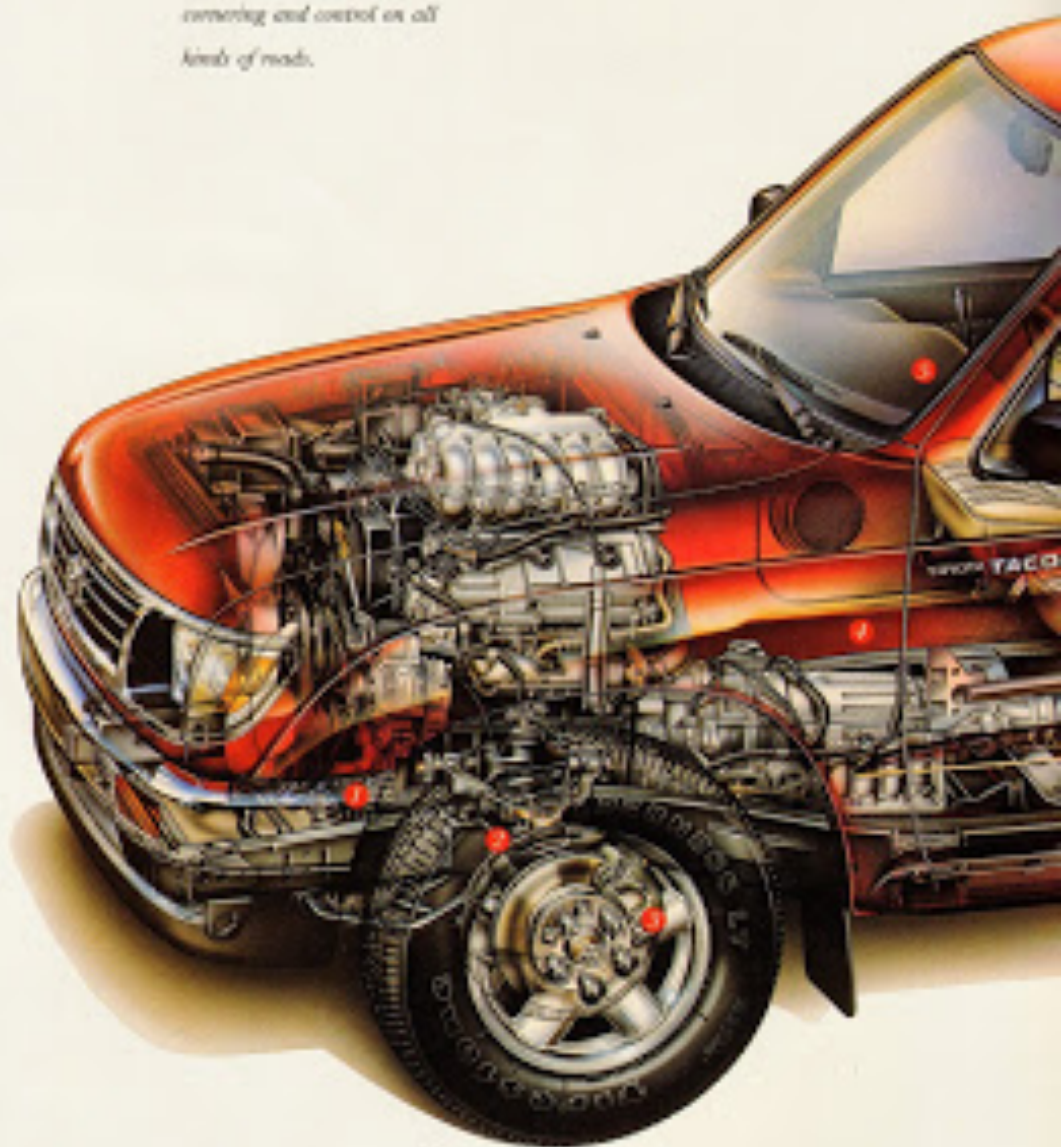
**SHIFTING IS EASY** with Tacoma's standard 3-speed manual overdrive transmission. Multi-cone synchromesh mechanisms are used to reduce shifting effort and improve durability. 4x4 Xtracab SR5 V6 models have an available One-Touch Hi-4 selector that allows you to shift up to 4WD at the touch of a button even while in motion. If you'd rather let Tacoma do the shifting for you, there is a 4-speed electronically controlled automatic overdrive transmission (ECT) available to handle the job. It's the new Toyota Tacoma: bred to be a champion.

● **Computer-mapped engine mounting locations** help reduce vibration and further improve Toyota's NVH technology.

● **Tacoma's rear suspension is a fully independent coil-spring double-wishbone type with stabilizer bar and hydraulic shock absorbers (gas-filled on 4x4 V6 models)** providing excellent cornering and control on all kinds of roads.



4x4 Suspension





**1** The efficient power-assisted ventilated front disc brakes combine great stopping power with fade resistance. The vented rotors dissipate heat, further

reducing brake fade. The brake pads feature an audible-alert indicator as a safety feature designed to let you know it's time to have them checked.



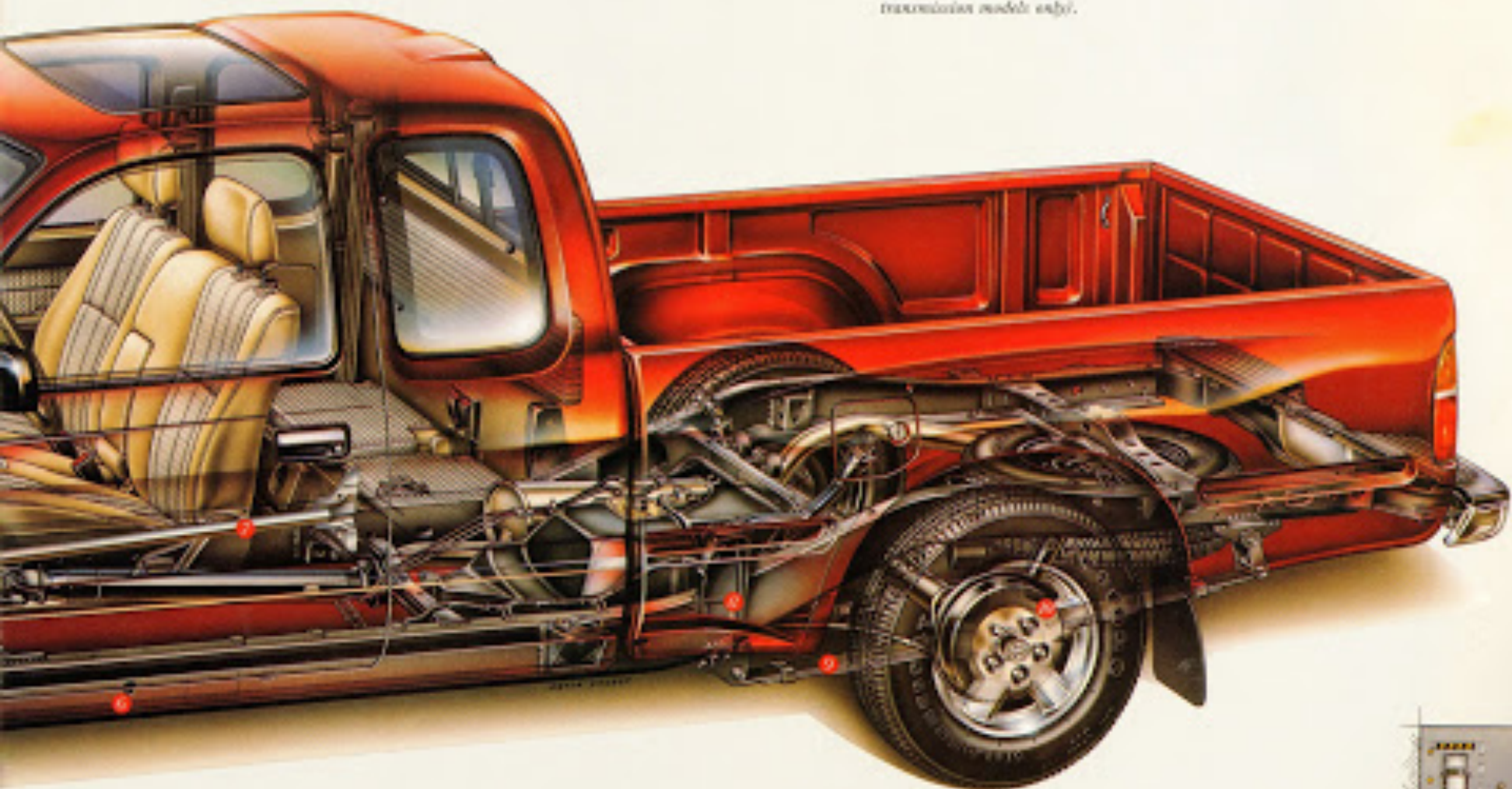
**2** "Sandwich"-style asphalt composite and steel sheets are placed between the steel body and chassis panels to help minimize noise and vibration.



**3** A push-button clutch start-cancel switch allows you to bypass the clutch and use the low gearing of the starter motor to climb out of tough situations (4x4 manual transmission models only).



**4** Tacoma's lower body panels, as well as leading edges of the hood and fenders, are undercoated with a soft-chip primer to reduce chipping and pitting.

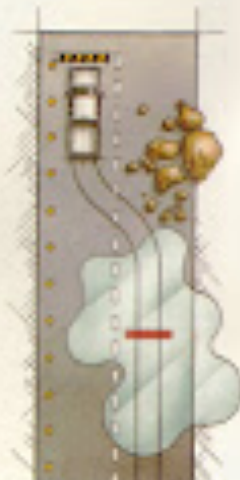


**5** Tacoma's side-door impact beams strengthen the door structure and help protect against collisions.

**6** The rugged frame has been designed to minimize vibration and weight even as its rigidity goes increased.

**7** Rear leaf spring suspension with staggered hydraulic shock absorbers (gas-filled on 4x4 V6 models) helps keep steering stable and ride comfortable. Pads between the leaf spring plates help minimize vibration.

**8** Optional 4-wheel Anti-lock Brake System (ABS) uses special wheel speed sensors and a computer to help avoid wheel lockup while providing better steering control during hard braking.



# It's having the BEST seats

IF THE MEASURE of an interior is the sum of its amenities, Tacoma Xtracab really adds up. Start with generous leg room and abundant cabin height that allow passengers to ride comfortably in front or back. 60/40 fully split fabric bench seats fit you perfectly, and folding rear seats feature 3-point seatbelts to help ensure a safe arrival. For aerodynamically efficient ventilation, Xtracabs provide tilt-out rear quarter windows. And for a sportier fit, 4x4 Xtracab SR5 V6 models offer 6-way adjustable bucket seats.

THERE'S STILL MORE to this inside story. Notice that Tacoma Xtracab features full carpeting for better soundproofing. A dual front cup holder handles your beverages, while dual door map pockets are great for stashing small items. Rear tinted privacy glass helps keep the cab cool, and the optional tilt steering wheel\* lets you slide easily into the driver's seat. Tacoma Xtracab doesn't leave much room for improvement.



*Split cable map/courtesy lights focus light on your leg, your passenger's or both. Front passenger can read maps easily without projecting distracting light on driver's side.*



*Optional Power Package includes power windows and door locks, so it's easy to keep your environment the way you want it.*



*Sliding front-passenger seat (4x4 Xtracab SR5 V6 only) makes getting in and out of the seat jump seat easy. Tilt the front seat up, and the entire seat slides forward. The front seat slides back into position when you tilt the seat back.*



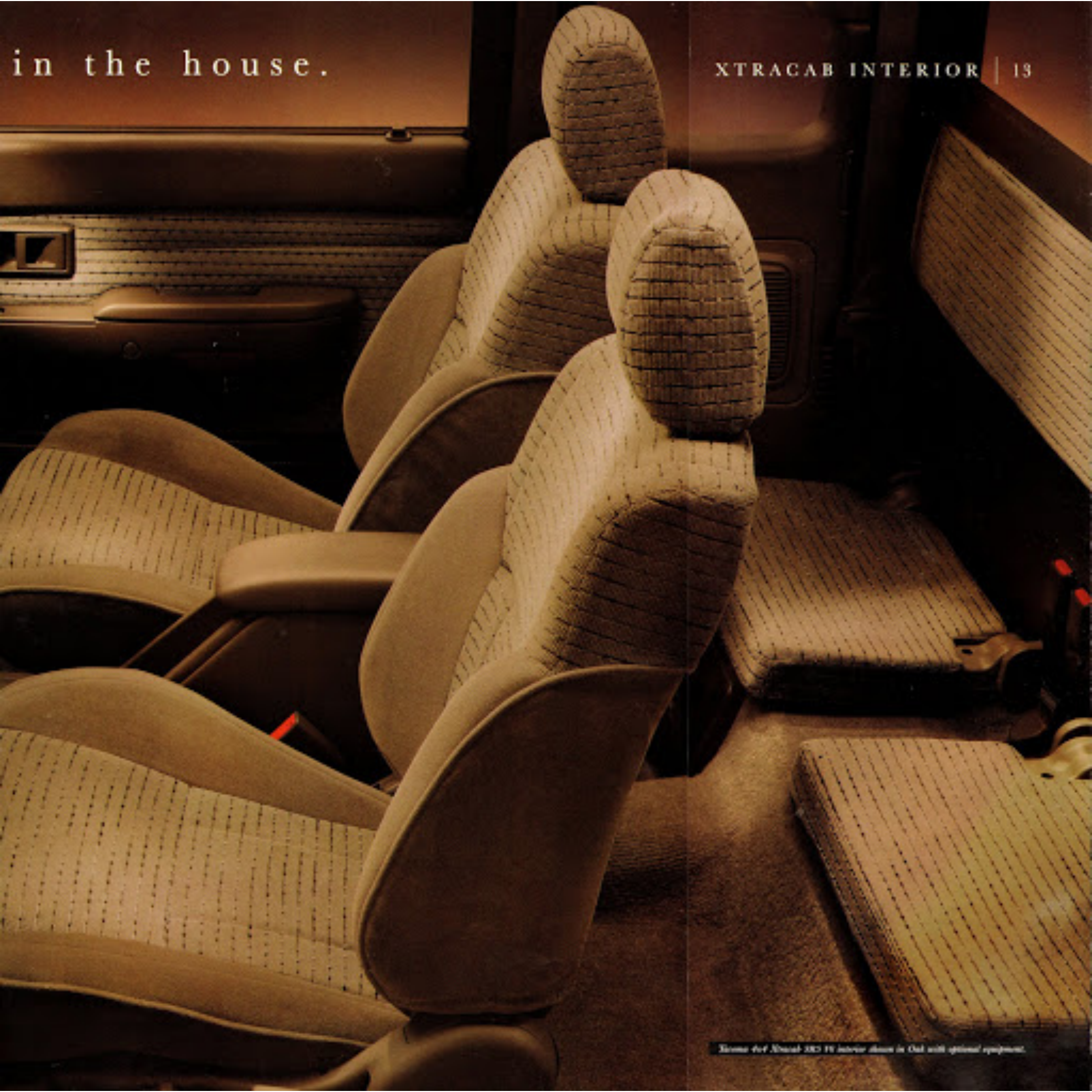
*Padded center console (4x4 Xtracab SR5 V6 models only) is a neat storage place for small stuff and a handy crutch to help fight driving fatigue.*

\*Standard on 4x4 Xtracab SR5 V6 models.



in the house.

XTRACAB INTERIOR | 13



*Image for Xtracab 283 IV interior shown in Oud with optional equipment.*



*Toyota Aed instrument panel shown in Gaps with optional equipment.*

PREPARED

for what lies ahead.

TACOMA'S ACTIVE INTERIOR is designed with a clear and concise instrument panel. Engine temperature, speed and fuel level gauges are well positioned, allowing you to gather information at a glance. Then scan the perimeter of the panel for battery, oil pressure, lights, etc. Everything is there, so you can check your engine's status and in-use systems any time. Adjustable front shoulder belt anchors provide a secure fit, and all Tacomas come equipped with a driver-side air bag Supplemental Restraint System (SRS) to help protect the driver from injury during an accident.

ENTERING OR EXITING the cab, Tacoma's convenient driver- and passenger-side assist grips make it easy. They come in handy through curving roads and rough terrain too. And if you want to move to the beat of another drummer, there's no need to lean over. Your optional Deluxe ETR (Electronically-Tuned Radiol)/Cassette is just a few effortless inches away. It's all the information and equipment you need, rolling down 6-mph trails or a 65-mph stretch of highway.



*Entire steering column tilts without interfering with column shifter and makes getting in and out of your Tacoma easier. (Standard on 4x4 Xtracab SRS V6, optional on other models.)*



*Standard Tacoma driver-side air bag is a Supplemental Restraint System (SRS) designed to inflate in a severe frontal collision. In all other accidents, seatbelts offer primary protection, and the air bag will not inflate. To minimize the risk of severe injury or death in all types of crashes, seatbelts must be worn at all times by all vehicle occupants. Do not sit or place objects close to an air bag. Please read your Owner's Manual.*



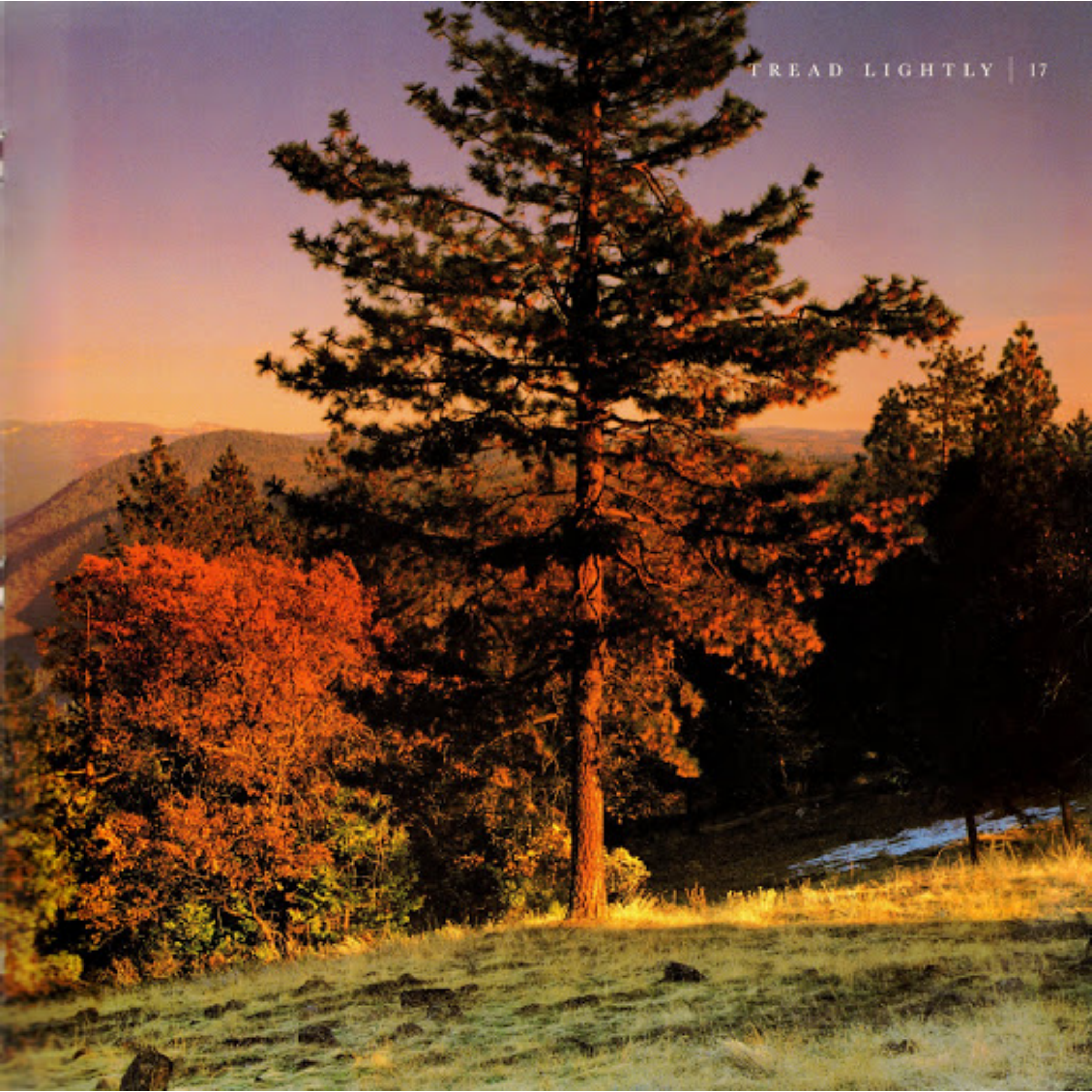
*From remote cup holder handles ten 20-ounce cups, so extra-thirsty driver and front passenger have a nearby place for their hot or cold beverages.*

# It's an INVITATION to return.

W E L C O M E . When you're off the paved road and into the wilderness, act responsibly. Toyota urges that you use your off-highway vehicle with an appreciation of the natural beauty of the land. As an official sponsor and a founding member of the "Tread Lightly!" program, Toyota reminds you, when you go off-road, go easy on the environment by using your common sense and only driving on marked roads and trails.







# It's arriving at the TOP.

## WHETHER YOU'RE EXPLORING

a remote pine forest or a mountain trail, the Tacoma 4x4 with optional SX Package gets you there in style. Aluminum alloy wheels with 31" x 10.5" or P225/75R15 tires take on the terrain, while gas-filled shocks (standard on V6 models) smooth out the road. Fabric bucket seats with adjustable headrests keep you comfortable, and a sliding rear window lets in plenty of fresh air. The sporty exterior graphics and an AM/FM ETR with 2 speakers are included on your 4x4 SX, and you can equip it with or without the Chrome Package.

## FOR THOSE WHO WANT IT ALL,

there's the Tacoma 4x4 Nitrocab SR5 V6. With most of the above features included, it adds the 190-hp 3.4-liter engine, the SR5 interior trim with 6-way adjustable driver's sport seat and the distinctive SR5 exterior striping, as shown on previous pages. Getting to the top has never been this easy.



*4-Wheel Down* allows you to change to 4WD simply by shifting the transfer selector knob, even while in motion.



4x4 SX | 19



*Tacoma 4x4 SX shown in Super Silver Metallic with optional SE Package.*

20 | 4 x 2 SX



*Tacoma 4x2 shown in Paradise Blue Metallic with optional SX and Chrome Package.*

# It's having the BEST equipment.

**IT'S OWNING TACOMA.** Especially when your 4x2 is equipped with the optional SX Package. Power-assisted steering makes turning a snap. Bucket seats with adjustable headrests let you ride in comfort, and a sliding rear window improves ventilation. An AM/FM ETR with 2 speakers keeps you entertained, while Black painted front and rear bumpers dress up your Tacoma. Aluminum alloy wheels and exterior graphics complete your sporty image.

**TACOMA'S EFFICIENT** 142-hp 2.4-liter 4-cylinder DOHC engine rivals some V6s and still boasts the economy\* of a 4-cylinder engine. Stay in charge with the standard 3-speed manual overdrive transmission, or take it easy with an optional 4-speed electronically controlled automatic overdrive transmission (ECT). With this kind of equipment, your 4x2 SX is a truck you'll hang onto.



*Optional volume mounted shifter is more convenient and opens up more front floor space.*

*This 4x2 SX interior doesn't scrim on space or amenities. Along with standard cloth-inset, full door trim, dual armrests, cut-pile carpeting and color-keyed instrument panel, you'll enjoy roomy bucket seats and a sliding rear window.*



# It's exercising your **OPTIONS!**

**IT'S ROOM FOR YOU** and all of your stuff. Or you and a friend, or two, or three, and all *their* stuff. Xtracabs are up to the task with a cab full of elbow room that features a 60/40 split front bench seat with front headrests that adjust to your height. Roomy rear seats give passengers the security of 3-point seatbelts, while a powerful 4-cylinder or V6 powerplant makes everything easy to carry.

**ADD THE OPTIONAL LX PACKAGE**, and you'll travel with Chrome front and rear bumpers, grille and trim, sliding rear window to let fresh air in and dual fabric sun visors to block the sun out. Toss in an AM/FM ETR with 2 speakers and sporty exterior stripes, and you'll see why the roomy 4x2 or 4x4 Xtracab LX has so many fans.



**CFC-free air conditioning**, included in the optional LX Package, helps keep your environment cool and comfortable.

**Roomy Xtracab LX interior** comes with rear, gray-tinted privacy glass to help keep the inquiring world outside, while optional power-assisted steering (standard on 4x4 V6 models) makes wheeling the kids around town easier.



XTRACAB LX 23



*Toyota 4x2 Dracab FX shown in Sierra Beige Metallic, and Toyota 4x4 Dracab FX shown in Abyssian Pearl, both with optional LX Package.*



*Tacoma 4x2 shown in Frontier Pearl, Toyota T100 One Ton GV shown in White and Tacoma 4x2 shown in Frontier Pearl with optional SE Package and rear bumper accessories.*



# It's TEAMWORK.

IT TAKES TOYOTA TEAMWORK to earn the loyalty of our customers. That's why we're always striving to make a quality product that works smart as well as hard. So it's not surprising Toyota has been ranked as the #1 Truck Line in Customer Satisfaction for four years running.\* In addition, Toyota T100 was ranked "Best Full-Size Pickup In Initial Quality" by J.D. Power and Associates for the last two years in a row\*\*

THE RIGHT TRUCK FOR THE RIGHT JOB. You'll find it among Toyota's impressive lineup of compact Tacoma and T100 trucks. Choose the value-packed Tacoma 4x2 with a 2.4-liter 4-cylinder engine boasting V6-like power that's the envy of other 4-cylinder trucks. Got a couple of workers you need to transport? You have plenty of room in Tacoma 4x2 Xtracab, which seats four comfortably. Whether it's a remote job site, or a muddy one, Tacoma 4x4 V6 is up for the job. And when it comes to payload and towing capacity, Tacoma has the "right stuff." Maybe you're thinking about something bigger. Then consider Toyota T100 One Ton DX with its powerful 190-hp 3.4-liter four-cam 24-valve V6 EFI engine. T100 also comes with responsive rack-and-pinion steering, heavy-duty suspension and larger front and rear brakes for optimal stopping performance. With a Toyota Truck, Toyota quality and reliability are always riding with you.



*Toyota's truck bed puts out 100%, giving you rugged, double-riveted construction that can stand up to bricks, drywall, heavy equipment and a lot more.*



*With Tacoma's handy tie-down hooks, you won't have to worry about finding good places to secure your load.*



*Toyota's removable tailgate gives you room to work in when you have lots of loading and unloading to do.*

\*J.D. Power and Associates 1999-2000 Truck Customer Satisfaction Studies™ 2004 study reflects a tie for first place and is based on 10,000 customer responses. Study includes compact and full-size pickups, vans and SUVs.

\*\*J.D. Power and Associates 2002-2004 Light Truck Initial Quality Studies™ 2004 study based on a total of 10,000 customer responses indicating fewer reported problems during the first 90 days of ownership.

See [New Arrivals](#) Check us out on page 1 for details.

# It's F O U R times around the world and

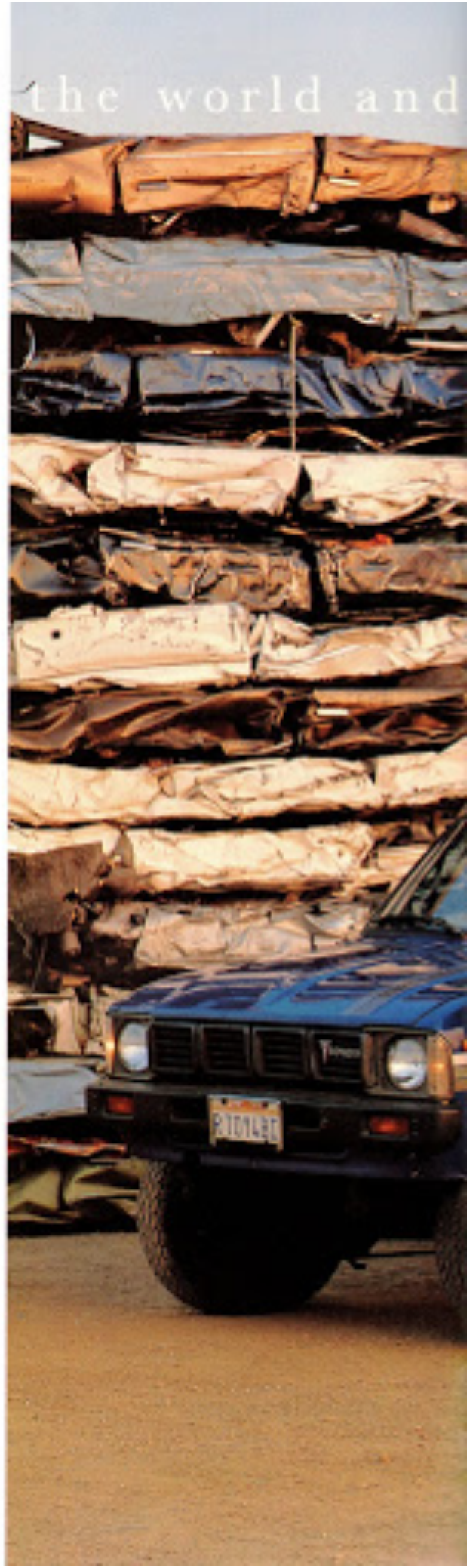
THAT'S 99,606.2 MILES. IF YOU COULD FOLLOW THE EQUATOR. Just a little short of the 100,000 miles many thousands of Toyota Truck owners have racked up. Just ask Robert Barth or Michael G. Casinelli (both pictured right). On Michael's 1979 4x2 Long Bed Deluxe, the number is 133,000 miles (over six times around the world) and climbing; while at last count, the odometer on Robert's 1990 Toyota 4x4 SR5 read an impressive 222,000 miles. (Almost nine times around the world!)

THESE OWNERS AREN'T ALONE. They add their names to the growing ranks of thousands of Toyota Truck owners all over the country who have called to tell us about their 100,000-mile (or more) success stories. And with the miles these Toyota Truck owners are logging every day, it's no wonder an owner like Jerry Calabrese from Annapolis, Maryland, has 692,305 miles on his 1986 Toyota 4x2 Standard Bed and is still counting.\* (That's a whole bunch of times around the world... almost 11!) All of which goes to show that when it comes to quality and reliability, our numbers are in your favor.

\*These mileage performances are exceptional. Do not expect to obtain the same mileage with your Toyota Truck.



Introducing the all-new Tacoma.  
Ready to join Toyota's ever-growing 100,000-mile club?



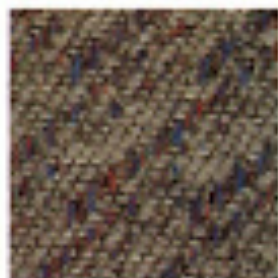
counting.

TOYOTA DEPENDABILITY | 27



# ric Options

It's



Club  
in Gray or Dull



Strawberry 501 IV Sport Club  
in Gray or Dull



*Rear sliding window option/ accessory\*\* is a must-have for additional ventilation. Moonroof option has tinted glass, removable sunshade and venting capabilities, so you won't be too hot.*



*Hood protector accessory helps guard against stones, bugs and objects that could mar your hood.*



*Optional Deluxe (FM/Cassette) with 4 sound-enhancing speakers surround you in spectacular sound every mile you drive. Optional Toyota MD CD 3-disc in-dash CD changer lets you play hours of music without touching a button.*



*Toyota Vehicle Security System (TVSS) accessory includes remote door lock/unlock, glass-breakage sensor, starter disable and other alarm features to help protect your investment.*



*Epoxy front-end mask accessory not only looks good, but has a protective purpose. Long-lasting vinyl mesh helps keep rocks and road debris from chipping and pitting the front of your truck.*



*Rear bumpers are the first thing they see. So why not add a deluxe Chrome rear bumper with blackout rubber foot pads? Or, choose a deluxe Black painted rear bumper with Black rubber chisel-resistant footing.*

\*\*No wheel area.  
\*\*Standard on 4x4 Xtracab 501/VI models.  
†Vehicles equipped with optional Power Package.

your CALL.

OPTIONS/ACCESSORIES | 29



# It's Toyota QUALITY, American-built.

## IT'S OUTSTANDING QUALITY.

Proven by how long Toyota Trucks last, Toyota has been selling trucks in the U.S. since 1964 and has more trucks on the road than any other import.\*

**TACOMA** . It's designed for Americans and built by Americans. Today, all Tacomas are being built at New United Motor Manufacturing, Inc., in Fremont, California. Tacoma truck beds and catalytic converters are being manufactured at TABC in Long Beach, California. And every Tacoma has the legendary Toyota attention to detail built in Toyota and the American worker. It's a quality partnership with a bright future.





**A S A C O M P A N Y** that's been a part of America for 38 years, Toyota's ultimate goal is your complete satisfaction. To this end, Toyota is devoted to providing you with the best products and services in the automotive industry. When you choose a Toyota vehicle, you have a **C O M M I T M E N T** that it will live up to the reputation of quality for which Toyota is known. This dedication to you also extends to the way Toyota does business here in **A M E R I C A**. That's why Toyota has a total investment of more than \$5 billion in the American market including design centers, testing facilities and manufacturing plants. In fact, many of Toyota Corollas, Camrys, and all new Avalons and Tacomas sold in the U.S. are built right here. Over 84,000 men and women are employed in the U.S. by Toyota and Toyota dealers. **P A R T N E R S H I P S** with hundreds of American suppliers also have had a significant economic impact across the United States.



From Toyota's substantial national investment in the U.S. to local efforts at the dealer level, the Toyota family is working hard to ensure complete **S A T I S F A C T I O N** throughout your ownership experience.

# Features

**SAFETY:** At Toyota, our concern for your safety is paramount. That's why every Toyota Car and Truck is equipped with a host of safety features that are designed to help protect you against the unexpected. Because, ultimately, the most important thing that will go into any new Toyota is you.

## 1993 **TACOMA** SAFETY FEATURES:

Air bag — driver-side Supplemental Restraint System (SRS)*
Steering — 4-wheel Anti-lock Brake System (ABS), optional
Headrests — front in outboard positions
Impact beams — side-outer
Lock-out — power windows
Safety seat — child, accessories
Seatbelts/front — 3-point in outboard positions; driver-side Emergency Locking Retractor (ELR), front passenger-side Automatic Locking Retractor (ALR) (SRS, ELR and center lap belt)
Seatbelts/rear — 3-point with jump seats and Automatic Locking Retractors (ALR) (Optional Locking Retractor (ELR) (Optional model)
Shiftlock system — with automatic transmission
Shoulder belt anchors — adjustable driver-side and front passenger-side
Stoopamp — rear center high-mount integrated

## MECHANICAL

	Regular Cab			Trucks				
	4x2	4x4	4x4 V6	4x2	4x2 V6	4x4	4x4 V6	4x4 SR5 V6
Anti-lock Brake System (ABS) — 4-wheel	0	0	0	0	0	0	0	0
Engine — 2.4-liter 4-cylinder dual overhead cam (DOHC) electronically fuel-injected (EFI)	5	-	-	5	-	-	-	-
Engine — 2.7-liter 4-cylinder dual overhead cam (DOHC) electronically fuel-injected (EFI)	-	5	-	-	-	5	-	-
Engine — 3.4-liter V6 dual overhead cam (DOHC) electronically fuel-injected (EFI)	-	-	5	-	5	-	5	5
Hubs — manual locking front (not available w/4WD/Demand)	-	5	5	-	-	5	5	-
Ignition system — Denso/Toyota Direct Ignition (TDI)	5	5	5	5	5	5	5	5
Switch — One-Touch 16-4	-	-	-	-	-	-	-	0
Steering — power-assisted rack-and-pinion	0	5	5	0	5	5	5	5
Transfer case — 3-speed	-	5	5	-	-	5	5	5
Transfer case — 4WD/Demand	-	0	0	-	-	0	0	5
Transmission — 4-speed electronically controlled automatic overdrive (ECT)	0	0	-	0	0	0	0	0
Transmission — 5-speed manual overdrive	5	5	5	5	5	5	5	5

## EXTERIOR

Bed — double wall and removable tailgate	5	5	5	5	5	5	5	5
Bumper — rear deluxe (Black painted)	A	5	5	5	5	5	5	-
Bumper — rear deluxe (Chrome)	A	A	A	A	A	A	A	A
Fuel-filler door — lockable with gas cap holder	5	5	5	5	5	5	5	5
Mirrors — dual back outside with passenger-side convex mirror	5	5	5	5	5	5	5	5
Moonroof — pop-up/removable with removable sunshade	-	-	-	0	0	0	0	0
Mudguards — front/rear	A	5	5	A	A	5	5	5
Fant — metallic	0	0	0	0	0	0	0	0
Wheel covers — full	5	-	-	5	5	-	-	-
Wheels — aluminum alloy and P225/70HR tires	0	-	-	0	0	-	-	-
Wheels — aluminum alloy P225/70HR tires, gas-filled shock absorbers (std. on V6 models)	-	0	0	-	-	0	0	5
Wheels — styled steel and P225/70HR radial tires	-	5	5	-	-	5	5	-
Wheels — aluminum 31" x 10.5" radial tires and chrome wheel arch moldings (with gas-filled shock absorbers on V6 models)	-	0	0	-	-	0	0	0
Windows — sliding rear (also with Gray privacy glass on Xtracab models)	0	0	0	0	0	0	0	0
Windows — 16-oz. rear quarter	-	-	-	5	5	5	5	5

## INTERIOR

Air conditioning — CFC-free	0	0	0	0	0	0	0	0
Carpeting — full	5	5	5	5	5	5	5	5
Cup holder — dual	5	5	5	5	5	5	5	5
Clock — digital quartz (part of Convenience or Cruise Control Package)	0	0	0	0	0	0	0	5
Gauges — speedometer, odometer, fuel level and coolant temperature	5	5	5	5	5	5	5	5
Gauges — tachometer, low fuel warning light and reusable tripmeter	0	0	0	0	0	0	0	5
Seat — 16-forward fabric bench with headrests, and fabric rear door trim with map pockets	5	5	5	-	-	-	-	-
Seats — reclining fabric bucket with adjustable headrests	0	0	0	-	-	-	-	-
Seats — reclining fabric bucket sport seats w/6-way driver's adjust. & passenger-side walk-in device	-	-	-	5	5	5	5	-
Seats — 80/20 fully split fabric bench with adjustable headrests	-	-	-	5	5	5	5	-
Seats — forward-facing rear jump	-	-	-	5	5	5	5	5
Steering wheel — 38 (includes variable intermittent wipers)	0	0	0	0	0	0	0	5
Storage compartment — right rear quarter	-	-	-	-	5	5	5	5

## PACKAGES

40/Weather Guard Equipment Package — heavy-duty battery 100 4-qt. 4-sp. auto / V6 models/ 4x4 V6, heavy-duty starter 14-cyl. models, ten-channel windshield molding and heavy-duty windshield wiper motor	0	0	0	0	0	0	0	0
Chrome Package — chrome front and rear bumpers, grille and trim	0	0	0	0	0	0	0	5
Convenience Package — tilt steering wheel, cruise control, tachometer, tripmeter and digital clock	0	0	0	0	0	0	0	-
Cruise Control Package — cruise control and leather-wrapped steering wheel (std. on SR5 V6)	0	0	0	0	0	0	0	0
LX Package — Chrome Package, power-assisted steering (std. on 4x2 V6 and 4x4 models), ETR with 2 speakers, rear gray privacy glass, exterior stripes, sliding rear window, CFC-free air conditioning and dual fabric sun shades	-	-	-	0	0	0	0	-
Power Package — power windows, door locks, dual outside mirrors (chrome on SR5 V6), antenna and Lighting Package	0	0	0	0	0	0	0	0
SX Package — aluminum alloy wheels, power-assisted steering, bucket seats w/adjust. headrests, exterior stripes, black painted rear bumper, sliding rear window and ETR with 2 speakers	0	-	-	-	-	-	-	-
SX Package — aluminum alloy wheels, P225/70HR or 31" x 10.5" tires, With or without Chrome Package, gas-filled shock absorbers (std. on V6 models), fabric bucket seats with adjustable headrests, exterior stripes, sliding rear window and ETR with 2 speakers	0	0	0	-	-	-	-	-

## AUDIO SYSTEMS

ETR (Electronically-Tuned Radio) — with 2 speakers	0	0	0	0	0	0	0	5
Deluxe ETR/Cassette — with 4 speakers	-	-	-	0	0	0	0	0



# Specs

## MECHANICAL/PERFORMANCE

	Regular Cab			Strucab				
	4x2	4x4	4x4 V6	4x2	4x2 V6	4x4	4x4 V6	4x4 DR5 V6
Brakes - power assisted tandem (front/rear)	Unlimited Stop Discs, with rear load-sensing proportioning valve (LSPV), 4-wheel Anti-lock Brakes (ABS) optional on all models							
Construction - cab and bed/frame	Welded steel cab and steel bed; full box frame							
Engine	4-cylinder DOHC w/EFI	4-cylinder DOHC w/EFI	V6 DOHC w/EFI	4-cylinder DOHC w/EFI	V6 DOHC w/EFI	4-cylinder DOHC w/EFI	V6 DOHC w/EFI	
Displacement	2.4 liters (0.438cu)	2.7 liters (0.694cu)	3.2 liters (0.376cu)	2.4 liters (0.438cu)	3.4 liters (0.376cu)	2.7 liters (0.694cu)	3.4 liters (0.376cu)	
Horsepower - SAE net	102 @ 5,000 rpm	150 @ 4,800 rpm	190 @ 4,800 rpm	102 @ 5,000 rpm	190 @ 4,800 rpm	190 @ 4,800 rpm	190 @ 4,800 rpm	
Torque - SAE net	180 lb.-ft. @ 4,200 rpm	177 lb.-ft. @ 4,000 rpm	220 lb.-ft. @ 3,600 rpm	180 lb.-ft. @ 4,200 rpm	220 lb.-ft. @ 3,600 rpm	177 lb.-ft. @ 4,000 rpm	220 lb.-ft. @ 3,600 rpm	
Steering	Rack-and-pinion power-assisted standard on V6 and 4x4 models, optional on 4-cylinder models							
Suspension	Independent coil-spring, double-wishbone, stabilizer bar and hydraulic shock absorbers (gas-filled on Xcab 4x4 V6 model)							
	Leaf springs with tapered hydraulic shock absorbers (gas-filled shock absorbers on 4x4 V6 model)							
Turning circle diameter - curb to curb (ft.)	35.4	34.4	34.4	41.3	41.3	40.3	40.0	40.3

## EXTERIOR DIMENSIONS (in.)

Bed length - inside	74.5	74.5	74.5	74.5	74.5	74.5	74.5	74.5
Bed height - inside	15.5	15.5	15.5	15.5	15.5	15.5	15.5	15.5
Bed width - inside	57.9	57.9	57.9	57.9	57.9	57.9	57.9	57.9
Height - overall	81.0	88.5	88.5	81.4	81.4	88.3	88.3	88.3
Length - overall	173.2	173.2	173.2	199.3	199.3	199.3	199.3	199.3
- with rear bumper	180.5	180.5	180.5	198.0	198.0	198.0	198.0	198.0
Width - overall	86.5	86.5	86.5	86.5	86.5	86.5	86.5	86.5
Width - load front/rear	64.9/64.7	67.6/67.3	67.6/67.3	66.1/66.7	66.1/66.7	67.6/67.3	67.6/67.3	67.6/67.3
Wheelbase	103.3	103.3	103.3	121.9	121.9	121.9	121.9	121.9

## INTERIOR DIMENSIONS (in.)

Head room (front/rear)	38.2/36.6	38.2/36.6	38.2/36.6	38.4/35.8	38.4/35.8	38.4/35.8	38.4/35.8	38.4/35.8
Hip room (front/rear)	54.6/51.6	54.6/51.6	54.6/51.6	54.6/51.1	54.6/51.1	54.6/51.1	54.6/51.1	54.6/51.1
Leg room (front/rear)	41.1/36.4	41.1/36.4	41.1/36.4	42.6/36.4	42.6/36.4	42.6/36.4	42.6/36.4	42.6/36.4
Shoulder room (front/rear)	54.9/51.4	54.9/51.4	54.9/51.4	54.9/51.3	54.9/51.3	54.9/51.3	54.9/51.3	54.9/51.3

## OFF-HIGHWAY

Approach/Departure - angle of (degrees)	23/25	26/24	26/24	23/25	23/25	26/24	26/24	26/24
Axis ratio								
4-cylinder (5-speed manual override)	3.42:1	3.42:1	N/A	3.42:1	N/A	3.42:1	N/A	N/A
M-speed automatic override (ECT)	3.88:1	4.30:1	N/A	3.88:1	N/A	3.42:1	N/A	N/A
V6 (5-speed manual override)	N/A	N/A	3.89:1	N/A	3.78:1	N/A	3.81:1	3.81:1
M-speed automatic override (ECT)	N/A	N/A	N/A	N/A	3.78:1	N/A	3.81:1	3.81:1
Opt. 31" Tire Package (5-speed manual override)	N/A	4.30:1	4.03:1	N/A	N/A	4.03:1	4.03:1	4.03:1
M-speed automatic override (ECT)	N/A	4.30:1	4.03:1	N/A	N/A	4.03:1	4.03:1	4.03:1
Gear ratios - 2-speed transfer case								
4-cylinder 5-speed manual override (high/low ratios)	N/A	1.00/1/2.57:1	N/A	N/A	N/A	1.80/1/2.57:1	N/A	N/A
4-speed automatic override (ECT) (high/low ratios)	N/A	1.00/1/2.57:1	N/A	N/A	N/A	1.80/1/2.57:1	N/A	N/A
V6 5-speed manual override (high/low ratios)	N/A	N/A	1.80/1/2.57:1	N/A	N/A	N/A	1.00/1/2.57:1	1.00/1/2.57:1
4-speed automatic override (ECT) (high/low ratios)	N/A	N/A	N/A	N/A	N/A	N/A	1.00/1/2.57:1	1.00/1/2.57:1
Ground clearance - minimum running (in.) with opt. 31" Tire Package (in.)	8.3	8.1	10.8	8.8	8.5	10.8	8.1	8.1
Protection (in.)	N/A	9.1	12.0	N/A	N/A	12.0	9.1	9.1
Protection (in.)	6/4 models: 34.0 inches under front suspension, transfer case and fuel tank							

## CURB WEIGHTS (lbs.)

4-cylinder (5-speed manual override)	2,580	3,385	N/A	2,760	N/A	3,380	N/A	N/A
M-speed automatic override (ECT)	2,580	3,215	N/A	2,760	N/A	3,370	N/A	N/A
V6 (5-speed manual override)	N/A	N/A	3,380	N/A	3,380	N/A	3,400	3,400
M-speed automatic override (ECT)	N/A	N/A	N/A	N/A	3,380	N/A	3,435	3,430

## CAPACITIES (in.)

Gross vehicle weight rating - GVWR								
4-cylinder (5-speed manual override)	4,300	5,080	N/A	4,400	N/A	5,000	N/A	N/A
M-speed automatic override (ECT)	4,300	5,080	N/A	4,400	N/A	5,000	N/A	N/A
V6 (5-speed manual override)	N/A	N/A	5,100	N/A	4,400	N/A	5,100	5,100
M-speed automatic override (ECT)	N/A	N/A	N/A	N/A	4,400	N/A	5,100	5,100
Payload <sup>1</sup>								
4-cylinder (5-speed manual override)	1,640	1,815	N/A	1,640	N/A	1,800	N/A	N/A
M-speed automatic override (ECT)	1,620	1,765	N/A	1,640	N/A	1,830	N/A	N/A
V6 (5-speed manual override)	1,895	N/A	1,800	N/A	1,818	N/A	1,685	1,780
M-speed automatic override (ECT)	N/A	N/A	N/A	N/A	1,490	N/A	1,685	1,675
Fuel tank <sup>2</sup> (gals.)	15.1	18.0	18.0	15.1	15.1	18.0	18.0	18.0

## TIRES

Size (all-steel steel)	P 89/75R14	P225/75R15		P2-89/75R14	P225/75R15			
Type (steel belted radial/blackwall)	All-Season	Mud-& Snow rated		All-Season	Mud-& Snow rated			

## MILEAGE ESTIMATES (EPA estimated MPG city/highway)

4-cylinder (5-speed manual override)	22/29	18/22	N/A	22/29	N/A	18/22	N/A	N/A
M-speed automatic override (ECT)	22/25	18/21	N/A	22/25	N/A	18/21	N/A	N/A
V6 (5-speed manual override)	N/A	N/A	17/19	N/A	18/23	N/A	17/19	17/19
M-speed automatic override (ECT)	N/A	N/A	N/A	N/A	18/22	N/A	17/19	17/19

**WARRANTY:** A 36-month/36,000-mile basic new-vehicle limited warranty applies to all components other than normal wear and maintenance items. Additional 60-month limited warranties cover your powertrain (for 60,000 miles) and corrosion perforation (for unlimited miles). See your Toyota dealer for details. In addition, there may be times when we will establish a special policy adjustment which will further defray repair costs.

S - Standard  
O - Factory option  
A - Dealer or  
    - Non-installed accessory  
N/A - Not applicable

\*Dolly is a registered trademark of Dolly Lites, Inc.

<sup>1</sup>Spinometer only and part of Convenience Package.

<sup>2</sup>Also available as part of Convenience Package.

Includes occupants, equipment and cargo.

<sup>3</sup>Fuel tank capacity may include up to 3.7 gallon of unusable fuel.

<sup>4</sup>2003 preliminary EPA mileage estimates determined by Toyota.

2003 EPA mileage estimates not available at time of printing. See your Toyota dealer for details.

Toyota 4x4 Tacoma Trucks are designed to meet off-road driving requirements. Abuseful use may result in costly damage. Toyota encourages responsible operation to protect you, your vehicle and the environment.

Seatbelts should be worn at all times, and please do not allow passengers to ride in the truck bed. Towing hitch receivers/hoist must. Kits are not intended to provide crash protection.

Vehicle specifications, standard features and optional equipment are based upon information available at the time of printing and are subject to change without notice. Specifications, standard features and optional equipment are for mainland U.S.A. vehicles only and may differ in the state of Hawaii and in other regions.



**TOYOTA TOUCH** is a philosophy in action. It's our effort to make all your experiences with Toyota the very best: from the time of your initial contact, during the sale and throughout the entire life of your car, our focus is your complete satisfaction. And there's no better example of this than the Toyota Touch **L E A S E**. Through the Toyota Touch Lease, you can drive a new Toyota with the lease term that's right for you, and still have the option of purchasing the vehicle at lease end. And because Toyota vehicles have a historically high resale value, monthly payments tend to be low, thereby making a Toyota Touch Lease even more attractive. The reason for this is **S I M P L E**. When you lease a vehicle, you pay for the difference between the initial cost of the vehicle and its projected value when your lease period is over (rather than the entire cost of the vehicle). In other words, you're only paying for what you use. What's more, all new Toyota vehicles are eligible under the Toyota Touch Lease and, just like a purchase, your leased vehicle carries a Toyota new-vehicle limited warranty. So, see your participating Toyota dealer for details to find out more about how easily a Toyota Touch Lease can put **Y O U** into the Toyota you've always dreamed of driving. For additional information, call our Customer Assistance Center at 1-800-331-4331 (weekdays 9 a.m. to 9 p.m. EST). Or our Telecommunications Device for the Deaf (TDD) at 1-800-443-4999. Buckle Up! Do it for those who love you.



4RUNNER



LAND-CRUISER



TACOMA



T100



YARIS



COROLLA



CAMRY



AVALON



PREVIA



PASEO



CELICA



MR2



SUPRA