

*Ford LTD*





Introduction	2
Engineering	4
Interior Design	8
Safety and Security	10
Options	11
Ford Prestige Service Plan	11
FordCare	12
Accessories	12

*The spirit of prestige motoring.*

*LTD in Heritage Green.*

**INTRODUCTION**

There's a spirit at Ford. Driving. Dynamic. Ever challenging. A spirit of continuous improvement. It fuels our constant pursuit of higher standards of vehicle quality,

safety, efficiency and owner satisfaction.

In respect of the LTD, this presents a certain dilemma. How do you improve a vehicle that is, already, the pinnacle in Australian prestige motoring? What you do, of course,

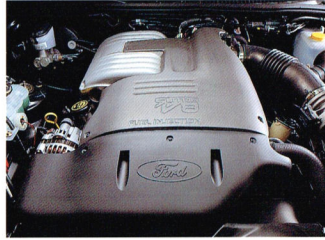
is introduce the very latest technological refinements. You make the interior even more sumptuous. And you freshen the styling to give the vehicle an unmistakably modern presence on the road.

All this we've done to make the latest LTD, unquestionably, the most refined, the most prestigious and the most rewarding to drive we've ever built. In so many ways, today's LTD embodies the spirit at Ford.



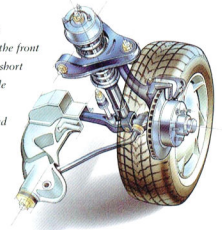
LTD is fitted with an advanced electronically controlled 4-speed automatic transmission that allows the driver to switch between "normal" and "economy" modes depending on the style of driving preferred.

Ford's advanced 5.0 litre V8 engine is computer-managed to deliver high power and torque outputs with efficiency and smoothness. Equipped with Ford's Sequential Multipoint electronic fuel injection system which is managed by the advanced EEC V computer system, it develops 165 kW @ 4500 rpm and produces 388 Nm of torque @ 3000 rpm.



Ford LTD has the power and strength to do all the things you want to do - like tow that boat!

Here's a reason why LTD really enjoys the road ... the front suspension is the reliable short and long arm, long spindle (SLALS) system tuned to keep harshness and road noise at low levels. Fade resistant 4-wheel disc brakes provide efficient stopping power.



*Superbly engineered.*

**ENGINEERING**

LTD has always delivered the outstanding ride comfort of a luxurious limousine. And it continues to do so. But, with the numerous revisions we've made to the steering

and suspension geometry, the excellent ride is accompanied by even finer handling.

You cannot help but be impressed by the way LTD feels so perfectly balanced. While soaking up the bumps,

it remains taut and responsive. In corners, body roll is minimal and stability is maintained.

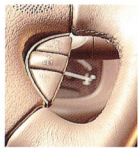
The handling matches the capability of Ford's powerful and efficient V8 engine which has been

re-engineered to run smoother and quieter than ever before.

The speed sensitive rack and pinion steering delivers an excellent feeling of control, leaving the driver in no doubt that this LTD truly enjoys the road!



LTD's luxurious interior in Cappuccino.



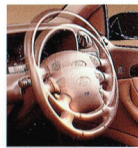
Relax - Ford LTD gives you cruise control.



Cup holder convenience. Anyone for coffee?



Quality audio system includes 6-stack CD player.



Steering column adjusts for personal comfort.



Trip computer calculates fuel and distance data.



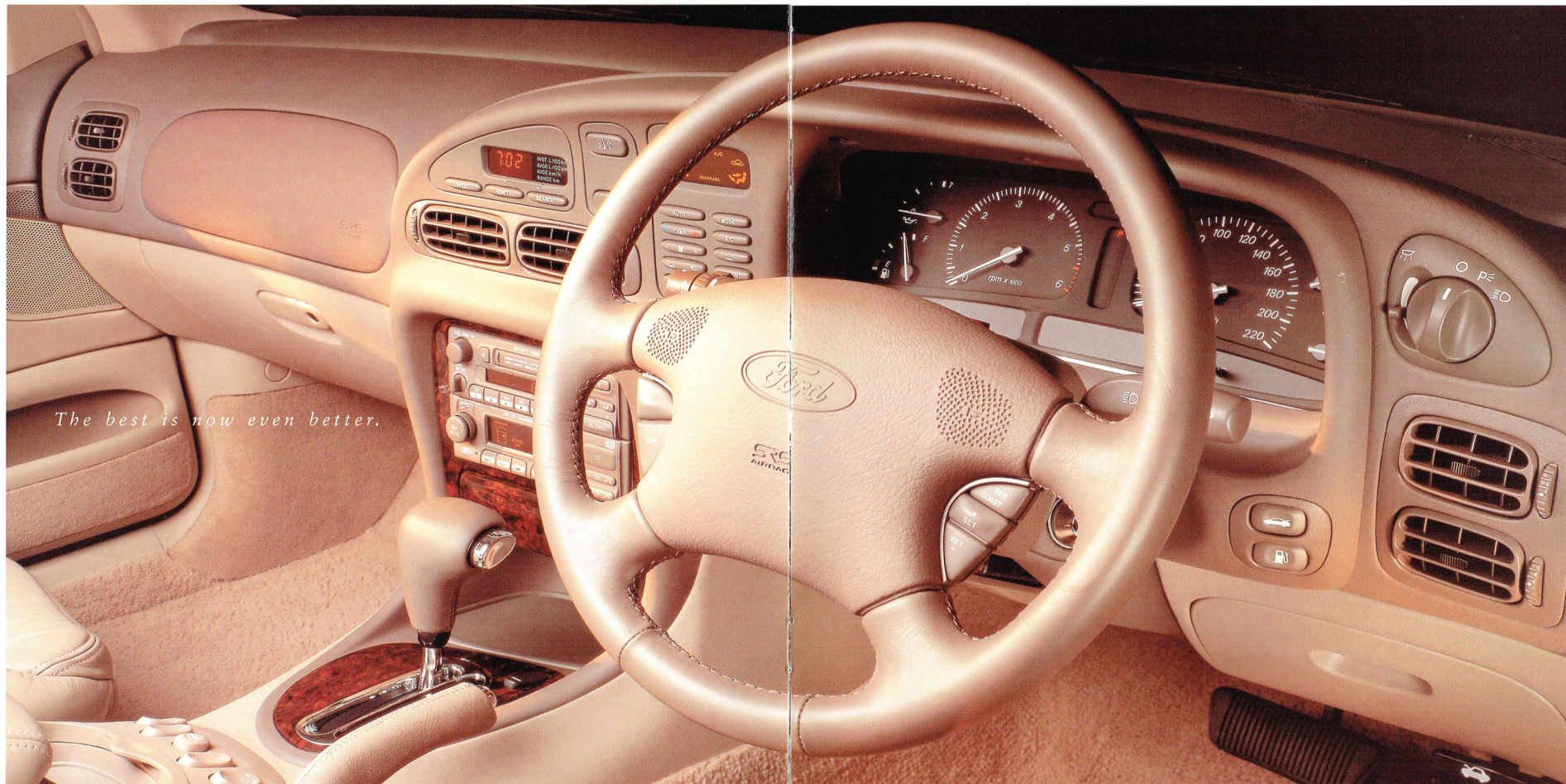
Set-and-forget. Climate control with CFC-free air conditioning.



LTD's 10-way power adjustable driver's seat.



60/40 split fold backrest handles awkward objects.



#### INTERIOR DESIGN

Ford's commitment to continuous improvement ensures that LTD will continue to lead the way in Australian prestige motoring. Witness the interior of the latest model.

It's an elegant display of space and grace, with every imaginable appointment.

The rich leather seats, including the 10-way power adjustable driver's seat, have been redesigned to provide the

ideal balance of softness and support. The switches and buttons, audio system (including 6-stack CD), seat belts and door trims are colour-keyed to create a beautifully aesthetic and co-ordinated environment.

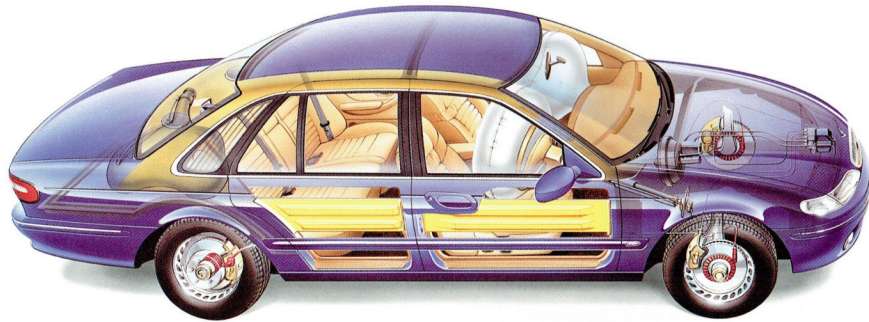
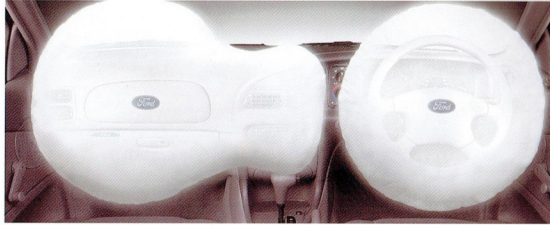
Today's magnificently appointed Ford LTD exceeds the very high standards LTD has already set. Which proves that with a spirit of continuous improvement, even the very best can be made that much better.

## SAFETY AND SECURITY

Some people feel safer in a full size car. With Ford, safety is more than a mere perception. It's a fact. Ford's uncompromising commitment has seen LTD evolve into one of the safest cars on the road.

Included in LTD's long list of standard safety equipment are airbags for the driver and front passenger and 4-wheel power disc brakes with new generation Anti-lock Braking System (ABS).

LTD is equipped with airbags for the driver and left front passenger. Sensors in the vehicle detect the severity of an impact. If the collision meets the criteria for deployment, the driver airbag and passenger airbag will inflate and be released.



The passenger compartment features side intrusion beams, and integrated front and rear crumple zones.

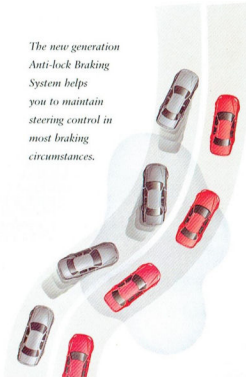


LTD has 'best in class' roof crush strength.



Height adjustable front seat belts, with belt lockers to minimise payout of seat belt webbing in extreme conditions.

The new generation Anti-lock Braking System helps you to maintain steering control in most braking circumstances.



Smartlock engine immobilisation and keyless entry.

6FPAAAJGWANL46173

Major vehicle components are permanently marked with an exclusive Vehicle Identification Number.

## LET YOUR SPIRITS SOAR WITH TICKFORD

The LTD is indeed a complete prestige vehicle in every respect. Some people, however, may make special demands of a vehicle and it is for those that these Ford options are offered. Many have been developed by Tickford Vehicle Engineering, Ford's partner in performance-enhanced vehicles.



Automatic pop-up wind deflector reduces wind noise and buffeting. (Note: sunroof fitment will reduce occupant head room.)

### MOMO STEERING WHEEL

Sculpted leather bound steering wheel for the ultimate in feel and control.

### 2300 kg RATED TOW PACK\*

Heavy Duty Towbar and Load Distributing Hitch, trailer wiring kit, revised turn signal flasher, transmission oil cooler.

### HEAVY DUTY TOW PACK\*

For those who already have a 2100 kg or 2300 kg Load Distributing Hitch. Heavy Duty Towbar (2300 kg rated when used with 2300 kg Load Distributing Hitch), trailer wiring kit, revised turn signal flasher, transmission oil cooler and a 1600 kg rated capacity plug-in tow ball mount.

\* Subject to State and Territory regulations.

### TOURING SUSPENSION

Luxurious comfort and responsive handling are combined in the Ford LTD. The Touring Suspension, with special springs, shock absorbers, stabiliser bars and linkages, offers a similar combination but with more emphasis on responsive handling. It also lowers the ride height.

### SUNROOF

Precision crafted electric glass sunroof, with integrated sun shade, fully imported from Germany. Versatile operation – tilted to assist ventilation, and partially or fully open for more enjoyment of the great outdoors.

## FORD PRESTIGE SERVICE PLAN

The Ford Prestige Service Plan is part of Fordcare and is exclusive to owners of Ford prestige vehicles like LTD.

It provides assistance and peace of mind for three years. Among the many benefits offered in the event of mechanical breakdown are:

- 24 hr Emergency Roadside Assistance.
- Emergency towing and vehicle recovery service.
- One night's free emergency accommodation for up to 5 people.
- Free emergency rental car assistance in certain circumstances.
- General assistance with medical matters.
- Assistance with cancellation or re-booking of any pre-arranged travel and accommodation.
- Urgent message relay anywhere in Australia.

If a mechanical breakdown occurs, these special services can be accessed 24 hours a day, 365 days a year via a toll-free hotline.

The number is clearly shown on your personal owner identification card which you will receive with your Ford Prestige Service introduction pack.

Also, to help you arrange routine servicing, the Ford Prestige Service Plan provides a central booking facility for any Authorised Ford Dealership you choose.

If your LTD spends more than 24 hours at the servicing Dealership for warranty repairs, a free loan vehicle will be available until your car is ready.

## FORD APPROVED ACCESSORIES

When these accessories are fitted by your Authorised Ford Dealer before you take delivery, they're covered, reassuringly, by Ford's 24 month/50,000 km Express New Vehicle Warranty – just

like your new LTD itself. Your Authorised Ford Dealer can help you select from a wide range of Ford Approved Accessories that have been designed to add greater

functionality, more protection or even a touch of personal flair to your new vehicle. Here are four selected Ford Approved Accessories you might like to consider right now:



**CARPET MATS**  
Help protect your LTD carpet from wear and soiling with colour-keyed carpet mats.



**SECURITY SYSTEM**  
The only car alarm system approved by Ford. Designed to integrate with LTD's standard Smartlock keyless entry and engine immobilisation system.



**1600 kg TOWBAR\***  
Designed to comply with Australian Design Rule (ADR 62) specification.



**1600 kg HEAVY DUTY TOWBAR\***  
Addition of a load levelling hitch (purchased separately) increases capacity to 2300 kg. Designed to comply with ADR 62.

\*Subject to State and Territory regulations.

## FORDCARE.

### OUR COMMITMENT TO YOUR SATISFACTION



Fordcare is a whole range of programs, products and services designed to make Ford owners the most satisfied motor vehicle owners in Australia.

The well-being of your Ford is supported by these warranties and services:

**The Ford 24 month/50,000 km Express New Vehicle Warranty.\***



Covers your Ford against defects in factory materials or workmanship for the first 24 months or 50,000 km – whichever occurs first. When fitted at or prior to the time of vehicle purchase, Ford Approved Accessories are also covered by the Ford 24 month/50,000 km Express New Vehicle Warranty.

\*Conditions apply.

**Five Year Perforation Corrosion Warranty.\***

Covers the original vehicle's body against perforation corrosion for the first five years of its life.

**Lifelong Panel Warranty.\***



Covers replacement of outer body panels against perforation corrosion for the life of the vehicle.

**Ford Customer Assistance Centre.**



We're always happy to hear from you and you will find us responsive to your needs. **Customer Assistance Centre – Telephone 1800 333 306 (TOLL FREE), in Melbourne telephone 9359 7023.**

**Ford Credit Financial Services.**



Ford Leasing and Red Carpet Options are available to approved applicants of Ford Credit Australia Limited. Enquire at your Authorised Ford Dealer.

**Fleet Communication Centre.**



Our Fleet Communication Centre is available to assist fleet customers with information on Ford products and services. Telephone 1800 673 207.

Further information on these warranties and services may be obtained from your Authorised Ford Dealer.



Have you driven a Ford ... Lately?

# Standard Equipment: Ford LTD

## MECHANICAL

- 5.0 litre OHV engine with multipoint electronic fuel injection
- Electronic engine control (EECV) system
- 4 speed electronically controlled floor automatic transmission with lock-up torque converter, optional economy mode and overdrive
- Short and long arm, long spindle front suspension
- Auto self levelling Watts Link rear suspension
- Front and rear stabiliser bars
- Four wheel disc brakes with asbestos free pads
- Anti-lock braking system (ABS)
- Power assisted rack and pinion steering
- Limited slip differential
- Speed sensitive power steering

## EXTERIOR

- Body coloured exterior door handles
- Full body coloured front and rear bumpers including body colour inserts with chrome highlights
- Body coloured valance
- Bright chrome hood mounted grille
- Wide section colour keyed bodyside protection mouldings
- P215/55 R16 Michelin steel belt radial ply tyres
- 16" x 7" chrome alloy wheels and centre cap with LTD logo
- Clear turn signal lamps
- Colour keyed foldaway exterior rear view mirrors with electric remote control
- Front cornering lamps
- Chrome window surrounds
- High jewel polycarbonate headlamps with twin pocket high beam
- Rear glass ceramic sunshade
- Rear high mounted stop lamp
- Twin rear chrome exhaust tip
- Chrome front bonnet LTD emblem
- Ducted air intake system
- Full width boot lid applique with rear chrome number plate surround
- Body coloured licence plate lamp
- Integral phone aerial base with aerial included
- Styled pinstriping
- Chrome deck lid spear with integral swing away lock cover
- Wide-angle left hand rear view mirror
- Battery saver feature
- Deletion of left hand front door exterior key lock for improved security

## INTERIOR

- "Smart Lock" electronic engine immobilisation and keyless entry system
- High security locking system featuring "Tibbe" locks on doors, ignition and boot, recessed door lock buttons and strengthened steering column lock housing
- Two speed front windscreen wipers with road speed sensitive variable intermittent setting, demand wash/wipe and demand wipe feature
- Rear window demister with timed automatic switch off feature
- Full tinted laminated windscreen with tinted band
- Smart tinted UPF 15+ side and rear glass
- Digital clock with trip computer display including overspeed warning
- Standardised child seat anchorage bolt fitted
- Colour keyed carpets
- Full inner deck lid trim

## Driver

- Driver and passenger air bag
- Deluxe leather wrapped steering wheel incorporating cruise control switches and horn
- Adjustable rake and reach steering column
- Prismatic day/night interior rear view mirror
- Driver's left footrest
- Variable intensity instrument lighting switch
- Cruise control
- Dual horns
- Power windows with time delay after key off
- Warning lights: High beam, Rear window demister on, Turn signal/hazard, Alternator, Suspension check, Economy mode indicator, Low oil pressure, Airbag, Seat belt, Brake failure, ABS, Security lamps on, Service indicator, Park brake on, Washer fluid low, Radiator fluid low, Fuel low, High temperature, Cruise control indicator, Car outline diagram for door, Boot, Fuel filler door open
- Audible warning chimes: Low fuel, Lights on, Low oil pressure, High engine temperature, Suspension check, Turn signals, Service interval reset acknowledgement, Brake and tail lamp out warning, Overspeed warning
- Gauges: Speedometer, Odometer, Service indicator, Tripmeter and fuel gauge, Water temperature gauge, Tachometer, Oil pressure, Battery voltage, PRNDL indicators
- Remote fuel filler release
- Remote boot release
- Power antenna with half/full height function
- Floor mounted leather wrap park brake with chrome button
- Power window override switch
- Leather wrapped T-bar handle with chromed button and stalk

## Seating

- Seats trimmed in genuine Howe leather
- 10 way electrically adjustable driver and passenger seats which include:
  - fore and aft adjustment
  - recline
  - thigh, lumbar and height adjustment
  - vertically adjustable lumbar for driver and passenger
- Front and rear adjustable headrests
- Front inertia reel seat belts with "belt lockers", rear inertia reel lap sash seat belts for all passengers
- Padded front and rear arm rests
- Adjustable B pillar seat belt anchorage
- Colour keyed seat belts

## Cabin Comfort

- Large centre console with power window controls, leather trimmed centre arm rest and drink cup holders
- 60/40 split fold down rear seat backrest with large centre arm rest
- Power door locks with remote keyless entry
- Cloth covered sunvisors with passenger vanity mirror and light
- Woodgrain door trim inserts
- Integrated grab handles and coat hooks
- Moulded cloth covered headlining
- Carpeted passenger and luggage compartment floor
- Interior light with map reading lamps
- Remote illuminated entry and exit system
- Rear reading lamps
- Front and rear door entry lamps
- Rear footwell lamp
- Luggage compartment lamp
- Illuminated front cigar lighter and ashtray
- Illuminated, lockable and flock lined glove box
- Chrome interior door handles
- Childproof rear door locks
- Automatic climate control system with integrated CFC (chloro fluoro carbons) free air conditioning with rear seat ducts and auto temperature control
- Colour keyed radio
- Colour keyed switches
- Premium digital sound processing AM/FM electric radio cassette with dolby, telephone auto mute, featuring 9 speaker elements including sub woofer (250 watts) and 6 stacker CD player with security code feature
- Burl Walnut door trims and instrument panel inserts
- Leather trimmed padded front and rear arm rests
- Burl Walnut finish on radio surround, ashtray door and rear air registers surround
- Chrome PRNDL trim and Burl Walnut panelling
- Front door carpeted map pockets/storage compartment

**HAVE YOU DRIVEN A FORD . . . LATELY?**

FORD LTD





# Ford LTD Specifications

## FORD LTD

Engine	5.0 litre V8 Multipoint EFI	4.0 litre I6 Multipoint EFI
Bore & Stroke (mm)	101.6 x 76.2	92.26 x 99.3
Cylinder Head	OHV cast iron	OHC aluminium alloy
Displacement (cc)	4942	3984
Compression Ratio	9.0:1	9.3:1
Fuel System	Electronic fuel injection controlled by EECV engine management system	
Fuel Required	Regular unleaded	Regular unleaded
Max Power DIN kW/rpm	165/4500	157/4900
Max Torque Nm/rpm	388/3000	357/3000

## Battery rating

Cold cranking amperes	400
Reserve capacity	95 minutes
Ampere hour	53

## Suspension

Front • Short and Long Arm, Long Spindle (SLALS) design	Rear • Rigid axle
• Single rate coil springs	• 4 trailing arms with Watts Linkage
• Twin tube telescopic shock absorbers mounted co-axially within the coil spring	• Single rate coil springs
• Stabiliser bar	• Twin tube telescopic shock absorbers mounted co-axially within the coil springs
	• Stabiliser bar
	• Auto self levelling rear suspension

## Brakes

FRONT: Power assisted ventilated disc : 287mm  
 REAR: Power assisted disc : 299mm

## Dimensions

Exterior (mm)	General		
Overall length	1522	Kerb weight (kg) (d)	1642
Overall height	1428	Luggage capacity (litres)	492
Overall width	1861	Fuel tank capacity (litres)	68
Wheelbase	2919	Min turning circle (m) – diameter	11.29
Front track	1566		
Rear track	1547		
Front overhang	919		
Rear overhang	1283		
<b>Interior (mm)</b>			
Front headroom	974		
Front legroom	1081		
Front shoulder room	1514		
Rear headroom	985		
Rear legroom	1084		
Rear shoulder room	1503		

## Options (Options are at extra cost unless otherwise stated)

Sunroof (e)  
 Touring Suspension  
 1600kg Rated Tow Pack (a)  
 Heavy Duty Tow Pack (a)  
 2300kg Tow Pack (a)  
 Velour seat trim (b)  
 Car alarm (c)  
 Momo steering wheel 4 spoke

## Engine/Transmission Combinations

5.0 litre Multipoint EFI 4 speed auto STANDARD  
 4.0 litre Multipoint EFI 4 speed auto OPTIONAL AT REDUCED COST

## Towing Capacity (Subject to applicable legislation and tow bar capacity)

	Ford Approved 1600kg Rated Tow Pack (Flat Tongue Bar)	Ford Approved Heavy Duty Tow Pack (with 1600kg Rated Ball Mount, Square Tube Bar)	Ford Approved 2300kg Tow Pack (with Load Distributing Hitch, Square Tube Bar)
4 speed auto	1600kg*	1600kg*	2300kg*

\* Without the Ford approved Tow Pack, the towing capacity is 500kg

**About this specification sheet.** This sheet is designed to provide you with selected specification data for the Ford products which have been described in a general way in the relevant brochure. Because of changes in conditions and circumstances Ford\* reserves the right, subject to all applicable laws, at any time, at its discretion, and without notice to discontinue or change the features, designs, materials, colours and other specifications and the prices of its products, and to either permanently or temporarily withdraw any such products from the market without incurring any liability to any prospective purchaser or purchaser.

Because of variations which occur in manufactured products, all capacities, measurements, dimensions and weights quoted in the relevant brochure and this specification sheet should be taken as approximate only.

Always consult an Authorised Ford Dealer for the latest information with respect to features, specifications, prices, optional equipment and availability before deciding to place an order.

\* FORD MOTOR COMPANY OF AUSTRALIA LIMITED

A.C.N. 004 116 223

Registered office:

1735 SYDNEY ROAD, CAMPBELLFIELD, VICTORIA 3061

## Footnotes:

- (a) The Tow Packs are fitted to the vehicle by or for Ford and provide the specified towing capacities when used in accordance with the instructions in the Ford Owners Manual.  
 Each Tow Pack consists of:
- Tow bar
  - Hitch and/or ballmount
  - Wiring harness with 'flat' 7-pin electrical connector
  - Towing turn signal flasher
  - Supplementary transmission cooler (automatic transmissions only)

Note: Other items such as the caravan or trailer braking system, tow ball, safety chains, etc, are required for the attachment of a caravan or trailer to the towbar or hitch, are not supplied as part of the Tow Pack and must be purchased at extra cost or be supplied by the purchaser of the vehicle. An accessory towbar is also available from your Authorised Ford Dealer, fitting to be arranged by the purchaser. If the vehicle is to tow a gross weight of more than 500kg the appropriate Ford Approved Tow Pack must be fitted. Consult your Authorised Ford Dealer for the latest information with respect to the specifications and the availability of the accessory towbar.

The actual towing capability and performance of a vehicle will depend on many factors including the suitability of the caravan, trailer, etc, the condition of the vehicle, the vehicle load, the vehicle specifications, weather conditions, road gradient, terrain and other prevailing conditions.

- (b) Delete option which includes the addition of velour door trims.  
 (c) The Car Alarm is available as a Dealer fitted option.  
 (d) Approximate kerb weight for LTD fitted with 4.0 litre MP EFI.  
 (e) Sunroof fitment will reduce occupant headroom.

**HAVE YOU DRIVEN A FORD . . . LATELY?**

