



EXPLORE THE NEW FACES OF FORD.



The New Explorer XLT

Let your spirit soar with Tickford.

Tickford Vehicle Engineering, Ford's partner in performance-enhanced vehicles, offer these options. They're backed by the Ford 3 year/100,000 km Express New Vehicle Warranty if fitted prior to delivery.



Express New Vehicle Warranty. Available on GLI, Futura and Fairmont automatic sedans and wagons and Fairlane Ghia.

Sports suspension. Delivers sportier handling while retaining good ride comfort. Stiffer front and rear springs, sports tuned shock absorbers and bushes and revised wheel alignment.

16" wheels and tyres. A choice of two 16" x 7" alloy wheel designs fitted with high performance Yokohama 510 series 225/50 VR 16 tyres for exceptional wet and dry road grip. (Available only with optional Sports Suspension.)

Momo steering wheel. Sculpted leather bound steering wheel for the ultimate in feel and control.

LPG. With this LPG system, Falcon delivers the same power on petrol or LPG! Developed jointly by Ford and TVE and tuned specifically for Falcon, this LPG system is the only LPG fitment covered by the Ford 3 year/100,000 km

Tow Packs*. Tow packs with 1200kg, 1600kg, and 2300kg ratings, and a heavy duty pack, available complete with tongues, wiring harness, connectors.

Body Styling Kits. (sedans only) Give your new car a sensational appearance. Includes styled side skirts, front and rear aprons for the bumper bars and a raised deck lid spoiler with integrated high, mounted stop light.

Sunroof. (sedans only) Precision crafted electric glass sunroof with sliding sun shade, fully imported from Holland. Versatile operation – as a tilted vent to assist ventilation, and partially or fully open to increase your enjoyment of the great outdoors. Automatic pop-up wind deflector reduces wind noise and buffeting. (Note: sunroof fitment will reduce occupant head room.)

*Subject to State and Territory regulations.

An ownership experience you're going to love.

FORDcare



Fordcare is a whole range of programs, products and services designed to make Ford owners the most satisfied motor vehicle owners in Australia.

The well-being of your Ford is supported by these warranties and services:



3 Year/100,000 km Warranty.*

Every new Ford car and light truck purchased from January 1, 1997 now includes a comprehensive 3 Year/100,000 km 'Bumper to Bumper' warranty.

It covers your Ford against defects in factory materials or workmanship for the first 3 years or 100,000 km – whichever occurs first.

When fitted prior to vehicle delivery, Ford Approved Accessories are also covered by the Ford 3 Year/100,000 km Express New Vehicle Warranty.

Five Year Perforation Corrosion Warranty.*

Covers the original vehicle's body against perforation corrosion for the first five years of its life.



Lifelong Panel Warranty.*

Covers replacement of outer body panels against perforation corrosion for the life of the vehicle.



Ford Customer Assistance Centre.

We're always happy to hear from you and you will find us responsive to your needs. Customer Assistance Centre – Call 1800 333 306 (TOLL FREE), in Melbourne call 9359 7023.



Ford Credit Financial Services.

Red Carpet Options is available to approved applicants of Ford Credit Australia Limited. Enquire at your Authorised Ford Dealer.



Fleet Communication Centre.

Our Fleet Communication Centre is available to assist fleet customers with information on Ford products and services. Telephone 1800 673 207.

Further information on these warranties and services may be obtained from your Authorised Ford Dealer.

*Conditions and exclusions apply.



TRANSIT

There's never been a "delivery system" quite like the Ford Transit. And now with a choice of one fuel injected petrol engine and two direct injection turbo diesel engines, there still isn't! You also select from short and long wheelbase vans with a range of roof heights, or specify a chassis cab to which you can add a body for the kind of work you have to do.



FALCON LONGREACH GLi VAN

Business is indeed a pleasure with 148 kW (200 hp) of unadulterated power under the bonnet. Plus power steering, 4-wheel disc brakes and a quality stereo.



LONGREACH S

This is the sporty, stylish, specially equipped Longreach. It has the 4.0 litre engine, plus standard driver's airbag, 15" alloy wheels, sports seats, remote keyless entry, central locking, variable intermittent windscreen wipers and stereo radio/cassette player with four speakers.



FALCON XR6 UTE

New Falcon style! New Falcon features! This is the ute that wears the Tickford "wings", which means it has the performance version of the Falcon 4.0 litre engine, Limited Slip Differential, 15" alloy wheels, power steering, sports seats, stereo radio/cassette and more. (Shown with optional 16" alloy wheels.)



If you would like to receive a brochure on a new Ford, either:

Phone **1800 503 673**, or complete this form (please use block letters):

Mr/Mrs/Miss/Ms

Surname

First Name

Address

Phone Home: ()

Work: ()

Occupation:

The vehicle I drive is: Privately owned
 A company vehicle

Make (eg Falcon):

Model (eg GLi):

Year (eg '92):

I would like to receive a brochure on a new Ford

(please tick your selection):

- Festiva
- Laser
- Mondo
- Probe
- Taurus Ghia
- Explorer
- Falcon GLi/Futura
- Falcon XR Series
- Fairmont/Fairmont Ghia
- Fairlane Ghia
- LTD
- Falcon Longreach Utes and Van/One Tonne
- Econovan
- Trader
- Transit
- Courier 2WD & 4WD
- Louisville Aeromax 120

I have plans to purchase a: new vehicle
 used vehicle sometime in the next: 3 months
 4-6 months 7-12 months 1-2 years

Please mail this form in an envelope
(no postage required) to:
Reply Paid AAA 145,

Ford Customer Response Centre,
Ford Motor Company of Australia Limited,
Locked Bag 7, NORTHCOTE VIC 3070.



LOUISVILLE AEROMAX 120

Never before has a conventional big Ford ever delivered so much. It's the most aerodynamic and fuel efficient big Ford ever – and the best handling and smoothest riding.

ECONOVAN

Our extensive product range offers van buyers a lot of choice, a lot of space, and a lot of value.



COURIER

It looks tough, it drives tough. You get a choice of petrol and diesel engines in 4x2 or 4x4 with all the power you need to get the job done. Then there's the tougher-than-ever reinforced chassis and a long list of safety and comfort features. Available as chassis cab, pick-up, standard cab, super cab or crew cab.



TRADER

Truckers love Traders – and there are six models to choose from, ranging from 2 to 4 tonnes, every one with power steering.





LASER SEDAN

The car that started it all is new again. With a choice of a powerful 1.8 litre DOHC 16 valve engine in the GLXi or the zippy 1.6 litre DOHC 16 valve engine in the LXi. What's more, this new Laser is more affordable than ever before.

LASER HATCH

A Classic in it's own right, the new Laser hatch has Laser's famous reliability, functionality and performance. With 1.6 litre or 1.8 litre DOHC 16 valve engines. Take your pick. For sheer quality and value, nothing gets close to a new Laser.



FESTIVA GLi AND GLXi

Totally reliable and a whole lot of fun, the Festiva is everybody's favourite small car. It's 5 door hatch styling is also surprisingly roomy. For added safety there's an optional driver airbag. The GLXi has a 1.5 litre SOHC 16-valve engine for greater performance.



FESTIVA TRIO AND TRIO S

Festiva Trio has always been nippy thanks to its 1.3 litre SOHC 8-valve engine. Now its downright quick thanks to the 1.3 litre SOHC 16-valve engine in the new Trio S. With its sporty styling and an optional driver airbag Festiva is outstanding value.





**MONDEO SEDAN,
HATCH AND WAGON**

One drive of the Mondeo and you'll understand why 'AutoCar' magazine rated new Mondeo "the best family car in the world". It's ride and handling are superb. The Mondeo range also boasts high levels of appointments including optional side airbags (available from May '97). A driver's airbag is standard.



TAURUS GHIA

Fully imported Taurus Ghia sets new standards in design and craftsmanship. Indeed it's an inspiration by design. Powered by a 3.0 litre 24-valve DOHC Duratec V6 engine that delivers 149kW. Taurus Ghia is engineered to be both quiet and responsive. It's aerodynamic and ultra ergonomic.



PROBE

A 2.5 litre V6 engine, with 24 valves and electronic fuel injection. Anti-lock brakes and a ground-hugging stance. Ford Probe. A beautiful body. And a passionate soul.



EXPLORER

Explorer is the world's best selling four-wheel drive and now it's here in Australia. There are three models, XL, XLT and Limited, each one with a powerful 4 litre V6 and Control Blade, the four-wheel drive system that does the thinking for you. A 5-speed automatic transmission is standard on the Limited and optional on the XL and XLT.

FALCON XR6 AND XR8

Ford and Tickford Vehicle Engineering jointly bring you true sporting cars that stand apart from all others for their performance and refinement.



FALCON GLi AND FUTURA

Whether you choose sedan or wagon, 4-litre six or 5-litre V8, every Falcon offers fantastic value for money and high levels of safety, technology and performance.



FAIRMONT GHIA

An executive package with all the fringe benefits. Fairmont Ghia admits you to a world of luxurious appointments, rich leather and abundant room.



FAIRMONT SEDAN AND WAGON

Never before has so much pleasure for the driver been combined with such luxury for the passengers.

FAIRLANE GHIA

It takes craftsmanship and engineering technology to a level that challenges world standards.



LTD

Ford's most prestigious vehicle, representing the pinnacle of Australian luxury motoring.



This brochure is designed to provide you with a general introduction to the Ford Products (including available optional equipment) referred to, and should be read in conjunction with the latest specification sheet. Because of changes in conditions and circumstances Ford reserves the right, subject to all applicable laws, at any time, at its discretion, and without notice, to discontinue or change the features, designs, materials, colours and other specifications and the prices of their products, and to either permanently or temporarily withdraw any such products from the market without incurring any liability to any prospective purchaser or purchaser. The latest specification sheet should be referred to for information on the availability, ordering and use of optional equipment. Always consult an Authorised Ford Dealer for the latest information with respect to features, specifications, prices, optional equipment and availability before deciding to place an order. *FORD MOTOR COMPANY OF AUSTRALIA LIMITED. (A.C.N. 004 116 223) Registered Office: 1733 Sydney Road, Campbellfield, Victoria 3061, Australia. Printed January 1997. PCL 6552.

If you would like to receive a brochure on a new Ford, either:
Phone **1800 503 673**, or complete this form
(please use block letters):
Mr/Mrs/Miss/Ms

Surname _____
First Name _____
Address _____
Phone Home: () _____
Work: () _____
Occupation: _____

The vehicle I drive is: Privately owned
 A company vehicle

Make (eg Falcon): _____
Model (eg GLi): _____
Year (eg '92): _____

I would like to receive a brochure on a new Ford
(please tick your selection):

- Festiva
 - Laser
 - Mondeo
 - Probe
 - Taurus Ghia
 - Explorer
 - Falcon GLi/Futura
 - Falcon XR Series
 - Fairmont/Fairmont Ghia
 - Fairlane Ghia
 - LTD
 - Falcon Longreach Utes and Van/One Tonne
 - Econovan
 - Trader
 - Transit
 - Courier 2WD & 4WD
 - Louisville Aeromax 120
- I have plans to purchase a: new vehicle
 used vehicle sometime in the next: 3 months
 4-6 months 7-12 months 1-2 years

Please mail this form in an envelope
(no postage required) to:
Reply Paid AAA 145,
Ford Customer Response Centre,
Ford Motor Company of Australia Limited,
Locked Bag 7, NORTHCOTE VIC 3070.



LOUISVILLE AEROMAX 120
Never before has a conventional big Ford ever delivered so much. It's the most aerodynamic and fuel efficient big Ford ever - and the best handling and smoothest riding.

ECONOVAN
Our extensive product range offers van buyers a lot of choice, a lot of space, and a lot of value.



COURIER
Truckers love Traders - and there are six models to choose from, ranging from 2 to 4 tonnes, every one with power steering.



TRANSIT
There's never been a "delivery system" quite like the Ford Transit. And now with a choice of one fuel injected petrol engine and two direct injection turbo diesel engines, there still isn't! You also select from short and long wheelbase vans with a range of roof heights, or specify a chassis cab to which you can add a body for the kind of work you have to do.



FALCON LONGREACH GLI VAN
Business is indeed a pleasure with 148 kW (200 hp) of unadulterated power under the bonnet. Plus power steering, 4-wheel disc brakes and a quality stereo.



LONGREACH S
This is the sporty, stylish, specially equipped Longreach. It has the 4.0 litre engine, plus standard driver's airbag, 15" alloy wheels, sports seats, remote keyless entry, central locking, variable intermittent windscreen wipers and stereo radiocassette player with four speakers.



FALCON XR6 UTE
New Falcon style! New Falcon features! This is the ute that wears the Tickford "wings", which means it has the performance version of the Falcon 4.0 litre engine, Limited Slip Differential, 15" alloy wheels, power steering, sports seats, stereo radiocassette and more. (Shown with optional 16" alloy wheels.)



Let your spirit soar with Tickford.

Tickford Vehicle Engineering, Ford's partner in performance-enhanced vehicles, offer these options. They're backed by the Ford 3 year/100,000 km Express New Vehicle Warranty if fitted prior to delivery.

Sports suspension. Delivers sportier handling while retaining good ride comfort. Stiffer front and rear springs, sports tuned shock absorbers and bushes and revised wheel alignment.

16" wheels and tyres. A choice of two 16" x 7" alloy wheel designs fitted with high performance Yokohama 510 series 225/50 VR 16 tyres for exceptional wet and dry road grip. (Available only with optional Sports Suspension.)

Momo steering wheel. Sculpted leather bound steering wheel for the ultimate in feel and control.

LPG. With this LPG system, Falcon delivers the same power on petrol or LPG! Developed jointly by Ford and TVE and tuned specifically for Falcon, this LPG system is the only LPG fitment covered by the Ford 3 year/100,000 km



Express New Vehicle Warranty. Available on GLi, Futura and Fairmont automatic sedans and wagons and Fairlane Ghia.

Tow Packs*. Tow packs with 1200kg, 1600 kg, and 2300kg ratings, and a heavy duty pack, available complete with tongues, wiring harness, connectors.

Body Styling Kits. (sedans only) Give your new car a sensational appearance. Includes styled side skirts, front and rear aprons for the bumper bars and a raised deck lid spoiler with integrated high, mounted stop light.

Sunroof. (sedans only) Precision crafted electric glass sunroof with sliding sun shade, fully imported from Holland. Versatile operation - as a tilted vent to assist ventilation, and partially or fully open to increase your enjoyment of the great outdoors. Automatic pop-up wind deflector reduces wind noise and buffeting. (Note: sunroof fitment will reduce occupant head room.)

* Subject to State and Territory regulations.

An ownership experience you're going to love.

FORDcare Fordcare is a whole range of programs, products and services designed to make Ford owners the most satisfied motor vehicle owners in Australia.

The well-being of your Ford is supported by these warranties and services:

3 Year/100,000 km Warranty.*
Every new Ford car and light truck purchased from January 1, 1997 now includes a comprehensive 3 Year/100,000 km 'Bumper to Bumper' warranty.

It covers your Ford against defects in factory materials or workmanship for the first 3 years or 100,000 km - whichever occurs first.

When fitted prior to vehicle delivery, Ford Approved Accessories are also covered by the Ford 3 Year/100,000 km Express New Vehicle Warranty.

Five Year Perforation Corrosion Warranty.*
Covers the original vehicle's body against perforation corrosion for the first five years of its life.

Lifelong Panel Warranty.*
Covers replacement of outer body panels against perforation corrosion for the life of the vehicle.

Ford Customer Assistance Centre.
We're always happy to hear from you and you will find us responsive to your needs. Customer Assistance Centre - Call 1800 333 306 (TOLL FREE), in Melbourne call 9359 7023.

Ford Credit Financial Services.
Red Carpet Options is available to approved applicants of Ford Credit Australia Limited. Enquire at your Authorised Ford Dealer.

Fleet Communication Centre.
Our Fleet Communication Centre is available to assist fleet customers with information on Ford products and services. Telephone 1800 673 207.
Further information on these warranties and services may be obtained from your Authorised Ford Dealer.

*Conditions and exclusions apply.



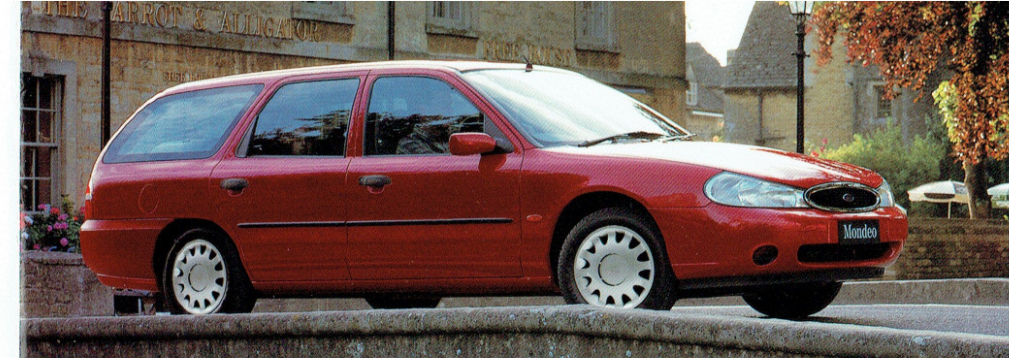
EXPLORE THE MANY FACES OF FORD.



The New Explorer XL



LASER SEDAN
The car that started it all is new again. With a choice of a powerful 1.8 litre DOHC 16 valve engine in the GLXi or the zippy 1.6 litre DOHC 16 valve engine in the LXi. What's more, this new Laser is more affordable than ever before.



LASER HATCH

A Classic in it's own right, the new Laser hatch has Laser's famous reliability, functionality and performance. With 1.6 litre or 1.8 litre DOHC 16 valve engines. Take your pick. For sheer quality and value, nothing gets close to a new Laser.



MONDEO SEDAN, HATCH AND WAGON
One drive of the Mondeo and you'll understand why 'AutoCar' magazine rated new Mondeo "the best family car in the world". It's ride and handling are superb. The Mondeo range also boasts high levels of appointments including optional side airbags (available from May '97). A driver's airbag is standard.



FALCON XR6 AND XR8
Ford and Tickford Vehicle Engineering jointly bring you true sporting cars that stand apart from all others for their performance and refinement.



TAURUS GHIA

Fully imported Taurus Ghia sets new standards in design and craftsmanship. Indeed it's an inspiration by design. Powered by a 3.0 litre 24-valve DOHC Duratec V6 engine that delivers 149kW. Taurus Ghia is engineered to be both quiet and responsive. It's aerodynamic and ultra ergonomic.



PROBE
A 2.5 litre V6 engine, with 24 valves and electronic fuel injection. Anti-lock brakes and a ground-hugging stance. Ford Probe. A beautiful body. And a passionate soul.



EXPLORER

Explorer is the world's best selling four-wheel drive and now it's here in Australia. There are three models, XL, XLT and Limited, each one with a powerful 4 litre V6 and Control Blade, the four-wheel drive system that does the thinking for you. A 5-speed automatic transmission is standard on the Limited and optional on the XL and XLT.

FAIRMONT GHIA
An executive package with all the fringe benefits. Fairmont Ghia admits you to a world of luxurious appointments, rich leather and abundant room.



FAIRMONT SEDAN AND WAGON
Never before has so much pleasure for the driver been combined with such luxury for the passengers.

FAIRLANE GHIA
It takes craftsmanship and engineering technology to a level that challenges world standards.



LTD
Ford's most prestigious vehicle, representing the pinnacle of Australian luxury motoring.



FESTIVA GLI AND GLXi

Totally reliable and a whole lot of fun, the Festiva is everybody's favourite small car. It's 5 door hatch styling is also surprisingly roomy. For added safety there's an optional driver airbag. The GLXi has a 1.5 litre SOHC 16-valve engine for greater performance.



FESTIVA TRIO AND TRIO S

Festiva Trio has always been nippy thanks to its 1.3 litre SOHC 8-valve engine. Now it's downright quick thanks to the 1.5 litre SOHC 16-valve engine in the new Trio S. With its sporty styling and an optional driver airbag Festiva is outstanding value.



This brochure is designed to provide you with a general introduction to the Ford Products (including available optional equipment) referred to, and should be read in conjunction with the latest specification sheet. Because of changes in conditions and circumstances Ford reserves the right, subject to all applicable laws, at any time, at its discretion, and without notice, to discontinue or change the features, designs, materials, colours and other specifications and the prices of their products, and to either permanently or temporarily withdraw any such products from the market without incurring any liability to any prospective purchaser or purchaser. The latest specification sheet should be referred to for information on the availability, ordering and use of optional equipment. Always consult an Authorised Ford Dealer for the latest information with respect to features, specifications, prices, optional equipment and availability before deciding to place an order. FORD MOTOR COMPANY OF AUSTRALIA LIMITED, (A.C.N. 004 116 223) Registered Office: 1735 Sydney Road, Campbellfield, Victoria 3061, Australia. Printed January 1997. FCL 6552.