



1999 *LeSabre* by Buick



Welcome to a family favorite — America's best-selling
full-size sedan.* A large, powerful and comforting
presence that has inspired confidence in generation
after generation of American families.

Welcome to a true sense of security and
peace of mind.

Welcome to LeSabre by Buick.

*Based on R.L. Polk 1992-1997 model year registrations.





LeSabre Limited in Bordeaux Red Pearl,
shown with optional equipment.

LESABRE IS HONORED

TO BE AMERICA'S

favorite

FULL-SIZE SEDAN.

For the past six years, more families have chosen LeSabre than any other full-size car.¹ In addition, LeSabre owners are very loyal — meaning that when people trade in their LeSabres, many of them choose another LeSabre. Maybe that's because it's such a great value. LeSabre owners are not the only ones who think so.

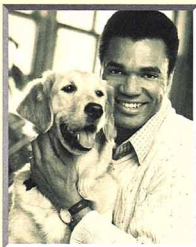
Six of the last seven years, starting in 1992, *IntelliChoice*[®] has named LeSabre "A Best Overall Value in Large Cars," (twice) or "The Best Overall Value in Large Cars," (four times).² Considering all the cars eligible over the years, that's quite an achievement.



¹ Based on R. L. Polk 1992-1997 model year registrations.

² © 1998 The Complete Car Cost Guide, IntelliChoice, Inc., Campbell, CA.

A SENSE OF *reassurance*
IS STANDARD WITH EVERY LESABRE.



Generations of American families have appreciated the sense of security that surrounds them in LeSabre, not just because it's a genuine full-size sedan, but because it's engineered with a vast array of safety features—and designed to provide true peace of mind.

FOUR-WHEEL
ANTI-LOCK BRAKES

REMOTE
KEYLESS ENTRY¹

REAR-DOOR CHILD
SECURITY LOCKS

STEEL
DOOR BEAMS

DAYTIME
RUNNING LAMPS

LAP/SHOULDER
SAFETY BELTS

HEATED OUTSIDE
REARVIEW MIRRORS¹

NEXT
GENERATION
AIR BAGS²

STEEL
SAFETY CAGE

SELF-SEALING
TIRES¹

FRONT
WHEEL DRIVE

TRACTION
CONTROL¹

Some features require optional equipment. Always use proper tie-up technique. Always use safety belts and proper child restraint, even with seat belts. See Owner's Manual for more safety information. Also see inside back cover for additional information.

[illegible]

We want you to be even more impressed with your LeSabre in a year or two, or three or four, than you are when it's brand new. That's why LeSabre is designed to serve you faithfully for a long, long time to come. From its rigid body structure to its chip-resistant paint, from its long-life components to its after-sales support system, LeSabre is built to enhance Buick's solid reputation for exacting standards and meticulous quality. You will discover more details on the following pages. And you will also discover a rewarding and lasting relationship with LeSabre.



LeSabre Limited Sedan in Bright White, shown with optional
Gran Touring Suspension Package, including 16-inch aluminum wheels.



LESABRE KNOWS *safety and security*
ARE FAMILY PRIORITIES.



Traction control ingeniously detects drive-wheel slippage and automatically reduces engine torque and modulates your brakes until full traction is restored, making you feel even more confident. It's optional on all LeSabre models. *(upper left)*

PASS-Key® II theft-deterrent system provides extra peace of mind, because only your own specially coded key can be used to start your car. *(lower left)*

Lap/shoulder safety belts in LeSabre's outboard rear seats are equipped with comfort guides, so even your smaller passengers can be securely buckled in and still ride comfortably. *(upper right)*

Steel door beams provide additional strength—and are engineered to help prevent occupant compartment intrusion in the event of a shallow-angle side-impact collision. *(lower right)*



Standard four-wheel anti-lock brakes help you maintain steering control and help prevent skidding on most slippery surfaces, especially under hard braking—another reassuring feature in a less-than-perfect world.





16



LeSabre Limited interior in Tanpe, shown with leather-trimmed seats and other optional equipment.

LESABRE'S SPACIOUS CABIN

SURROUNDS YOU WITH *comforting* FEATURES.



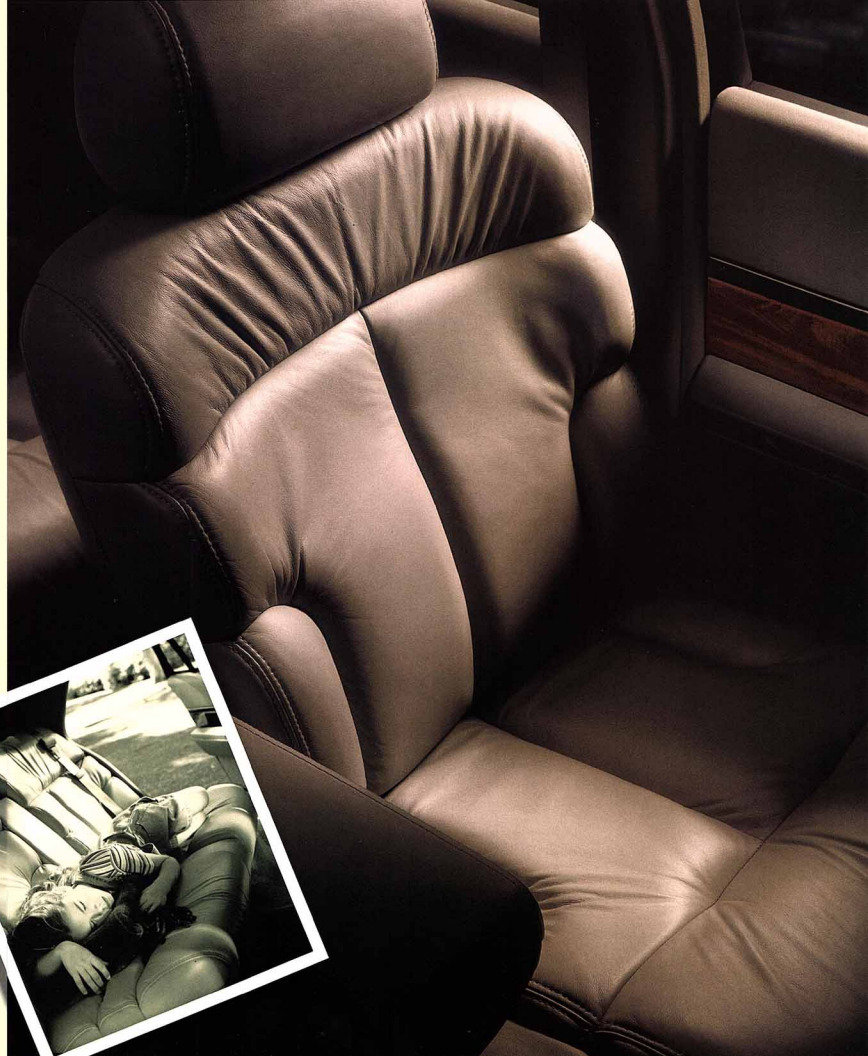
Concert Sound II (standard on Limited, optional on Custom) envelops you in rich six-speaker stereo sound, which is further enhanced by the optional CD player. (*upper left*)

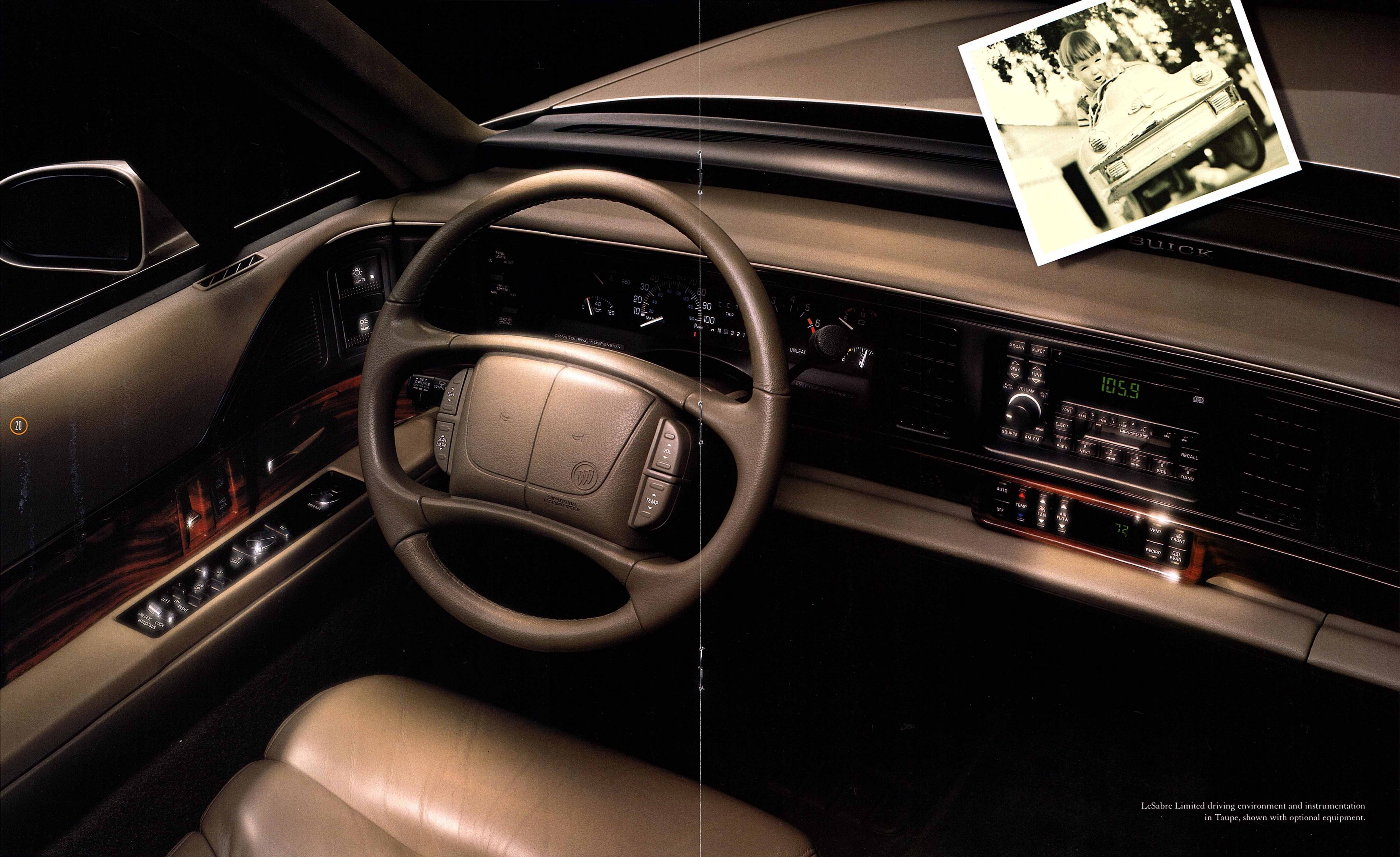
Six-way power seats for both driver and front passenger (standard on Limited, optional on Custom) feature a body-contoured design and seat back recliners. (*upper right*)

Dual Automatic ComforTemp climate control (standard on Limited) allows both driver and front passenger to individually select their own varying temperature settings. (*lower left*)

Steering wheel controls are included with the optional CD player, and allow you to adjust the sound system and the cabin temperature without taking your hands off the wheel. (*lower right*)

Leather-trimmed seating is an inviting option that makes LeSabre's road-tested seats feel even more inviting—and even more comfortable. (*facing page*)





LeSabre Limited driving environment and instrumentation in Taupe, shown with optional equipment.



LeSabre Custom Sedan in Platinum Beige Metallic,
shown with optional 15-inch aluminum wheels.



The trunk's low liftover height makes for easier loading and unloading of LeSabre's generous 17 cubic feet of trunkspace — there's plenty of room for your belongings. (center left)



Convenience Plus features include theater dimming lights, delayed locking, Battery Rundown Protection, lock-out protection and Twilight Sentinel® which automatically turns your headlamps on as night falls. (center right)

LESABRE'S *high standards*
ARE DESIGNED TO EXCEED YOURS.

75



Four-wheel independent suspension with front MacPherson struts contributes to LeSabre's legendary smooth ride and handling characteristics. You'll be comfortable with the way LeSabre reacts to the road. (lower left)

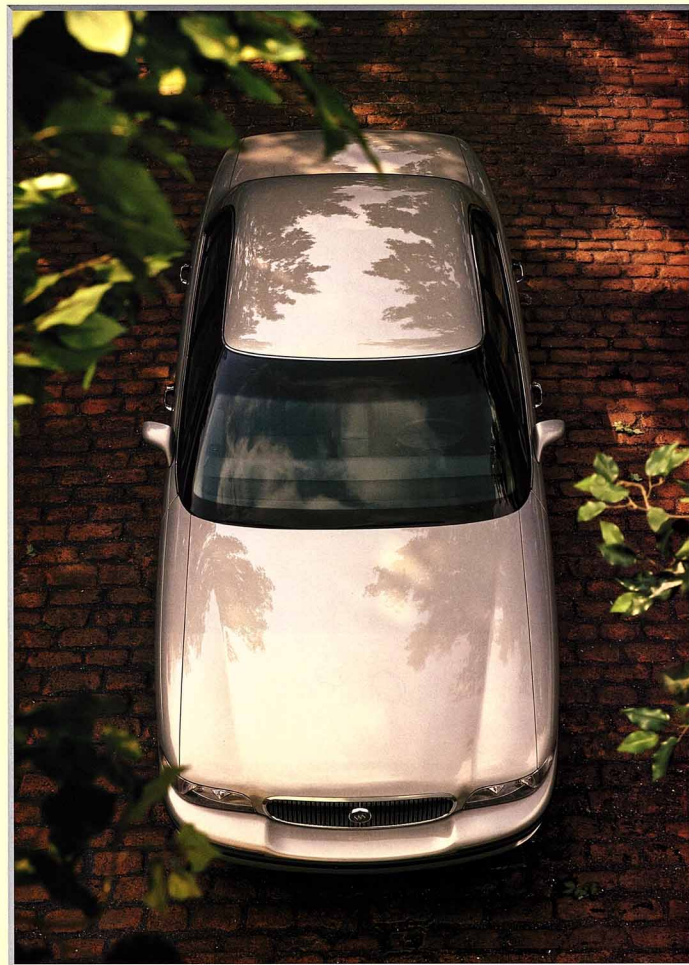
Custom Cloth graces LeSabre's standard interior, providing both tasteful comfort and generous space for up to six passengers — six adult passengers at that. (facing page)



LESABRE IS A FIRM BELIEVER IN *family values.*

Quality. Durability. Value for your money. These are traits for which LeSabre, and Buick, are justifiably renowned. LeSabre's 205-horsepower 3800 Series II V6 engine is both responsive and efficient-running. It also incorporates long-life engine fluids, platinum-tipped spark plugs and other components that allow you to drive up to 100,000 miles before your first scheduled tune-up.* Underneath its gleaming surface, LeSabre makes extensive use of double-sided galvanized steel for added strength. It's all designed to maintain and enhance LeSabre's well-deserved reputation for long-term durability—and to put your mind at ease as you and your family take to the road.

*Maintenance needs vary with different uses and driving conditions. See Owner's Manual for more information.





28

LIKE YOUR LESABRE, *OnStar*
IS ALWAYS THERE FOR YOU.

Push a button on your OnStar® cellular handset and this optional service is at your command. You reach an **OnStar Advisor** with instant access to immense resources. OnStar can call emergency service providers, give you directions, find an ATM or a restaurant and much more. If your air bag deploys, OnStar will automatically send a call for help. If you lock your keys in your car, OnStar can send a signal and unlock it by remote. If your car is stolen, OnStar can track it. If you run out of fuel, OnStar can call **roadside assistance** for you. Once functioning, it is a hands-free, voice-activated system that offers over 250 convenient service categories. You're never alone with OnStar.

OnStar uses existing emergency service providers and cellular and satellite technology. OnStar requires cellular services to be available and operating for features to function properly.



Bright White (16)*Sterling Silver Metallic (12)**Platinum Beige Metallic (83)**Dark Bronzemet Metallic (76)**Slate Green Pearl (61)**Emerald Green Pearl (38)**Twilight Blue Metallic (27)**Midnight Blue Pearl (28)**Santa Fe Red Pearl (53)**Bordeaux Red Pearl (51)**Black (41)*

color

COMPATIBILITY

Exterior Color
Interior Colors

Bright White (16)
Medium Blue, Gray, Taupe, Bordeaux Red

Sterling Silver Metallic (12)
Medium Blue, Gray, Bordeaux Red

Platinum Beige Metallic (83)
Taupe, Bordeaux Red

Dark Bronzemet Metallic (76)
Taupe

Slate Green Pearl (61)
Gray, Taupe

Emerald Green Pearl (38)
Gray, Taupe

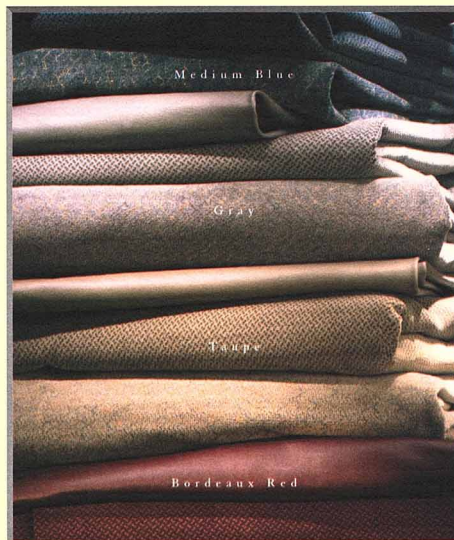
Twilight Blue Metallic (27)
Medium Blue, Gray

Midnight Blue Pearl (28)
Medium Blue, Gray, Taupe

Santa Fe Red Pearl (53)
Gray, Taupe

Bordeaux Red Pearl (51)
Gray, Taupe, Bordeaux Red

Black (41)
Gray, Taupe, Bordeaux Red



15" Deluxe Wheelcovers
(Standard on Custom)



15" Aluminum Wheels
(Standard on Limited,
optional on Custom)



*15" Custom Locking
Wire Wheelcovers*
(Optional on
Custom and Limited)



16" Aluminum Wheels
(Included with optional
Gran Touring
Suspension Package)

information

LESABRE STANDARD FEATURES

- Air Bags — Next Generation, driver and front passenger (SRS)*
- Air Conditioning
- Antenna — rear-window
- Armrest — front-seat storage with dual cup holders
- Battery — Delco® Freedom® II Plus
- Brakes — anti-lock power, front disc/rear drum
- Convenience Plus Features — include electronic reminder tones for ignition key, headlamps, turn signals, parking brake "on", delayed entry lighting, delayed exit lighting, theater dimming, Battery Random Protection, lock-out protection, delayed locking, PASS-Key® II passive theft-deterrent system, and Twilight Sentinel® with daytime running lamps
- Cruise Control — electronic
- Defogger — electric, rear-windows; front- and side-window outlets
- Door Locks — power with lock-out protection
- Drive — front-wheel
- Engine — 3800 Series II SFI V6
- Exhaust System — stainless steel
- Glass, Side and Back — Soft-Ray® tinted
- Glass, Windshield — Solar-Ray® solar-control
- Headlamps — anisoparaloud composite tungsten-halogen
- Head Restraints — adjustable front-seat
- Hood Lock — inside release
- Instrumentation — backlit analog cluster with trip odometer
- Lamp — center, high-mounted stop

- Lights — front- and rear-door operated dome, front instrument panel courtesy, glove box, trunk, engine compartment and ashtray
- Mirrors, Outside Rearview — deluxe body-color, left power remote, right manual
- Mirrors, Visor Vanity — driver and passenger
- Moldings — black, body-side
- Moldings — wheel opening, belt reveal and roof drip
- Multifunction Control Lever — turn signal, headlamp high-low beam, windshield wiper/washer controls
- Paint — waterborne basecoat-clearcoat with anti-chip lower
- Radio — ETR® AM-FM stereo with seek and scan and clock
- Recliners — manual seat back, driver and passenger
- Safety Belts, Front-Seat — outboard lap/shoulder belt system with front shoulder belt comfort adjusters, center lap belt
- Safety Belts, Rear-Seat — outboard lap/shoulder with child comfort guide, center lap belt
- Seats — cloth 55/45
- Security Locks — rear-door, child
- Speakers — dual, front and rear extended-range
- Steering — power rack-and-pinion
- Steering Column — TILT-WHEEL™ adjustable
- Steering Wheel — deluxe with SRS*
- Sunshades — extendable and supplemental, front
- Suspension — front, independent MacPherson strut
- Suspension — rear, independent
- Tires — P205/70R15 steel-belted, radial-ply all-season blackwall
- Transmission — 4-speed automatic with overdrive and electronically controlled converter clutch
- Wheelcovers — 15" deluxe
- Windows — power with driver express-down and passenger lock-out feature
- Wipers — 2-speed with variable delay features

ADDITIONAL LESABRE LIMITED STANDARD FEATURES

- Air Conditioning — dual automatic ComfortTemp climate control
- Air Conditioning — rear-seat ComfortTemp
- Carpet Savers — front and rear
- Door Locks, Memory — with lock-out protection and programmable delayed locking
- Instrumentation — analog gauge cluster includes tachometer, voltage, temperature and oil pressure gauges; low fuel indicator; and oil level and oil life monitors
- Lights — front- and rear-door-operated, front-header courtesy and reading, instrument panel courtesy, rear roof rail courtesy/reading, front- and rear-door courtesy and warning
- Mirrors, Outside Rearview — deluxe, body-color, power, left and right remote
- Mirrors, Visor Vanity — lighted, driver and passenger
- Moldings — body-color, body-side with protective strip
- Radio — ETR® AM-FM stereo with seek and scan, cassette player and clock
- Remote Keyless Entry — includes instant alarm, perimeter lighting, security feedback and individually programmable transmitters
- Seat — 6-way power, driver and passenger
- Speakers — Concert Sound II, 6-speaker system
- Stripes — accent paint
- Trunk Convenience Net
- Wheels — 15" aluminum

OPTIONS

- Engine Block Heater — electric
- License Plate Mounting Package — front (no extra cost)
- Mirror, Inside Rearview — electrochromic-automatic dimming with compass**
- OnStar — includes voice-activated cellular phone (dealer installed with OnStar readiness standard)
- Radio — power-loading CD player with automatic tone control and ETR® AM-FM stereo includes seek and scan, clock, preset of 12 FM/6 AM stations, preset scan and remote steering wheel controls
- Radio — power-loading CD and cassette players with automatic tone control and ETR® AM-FM stereo includes seek and scan, clock, preset of 12 FM/6 AM stations, preset scan, TheftLock® and remote steering wheel controls
- Seats — leather, 55/45 split bench
- Suspension — Gran Touring includes magnetic variable-effort steering, leather-wrapped steering wheel, P215/60R16 blackwall tires, specific 16" aluminum wheels, automatic level control
- Tires — self-sealing whitewall
- Traction Control — full-range
- Wheelcovers — 15" custom locking wire

*Supplemental Restraint System.
**Optional on Limited.

OPTION PACKAGES

(SD) Luxury Package; (SE) Prestige Package	Custom		Limited
	SD	SE	SE
• Carpet Savers — front and rear	■	■	
• Door Locks — memory, automatic, programmable with lock-out protection and delayed locking		■	
• Instrumentation — analog gauge cluster includes tachometer; voltage, temperature and oil pressure gauges; low-fuel indicator; oil level and oil life monitors			■
• Lamps — cornering			■
• Lighting Package, Headliner — includes map lights on inside rearview mirror, and driver and passenger lighted visor vanity mirrors		■	
• Mirrors, Outside Rearview — deluxe, body-color, electric, left and right remote		■	
• Mirror, Outside Rearview — left, electrochromic-automatic dimming with left and right heated			■
• Radio — ETR® AM-FM stereo with seek and scan, cassette player and clock	■	■	
• Radio — ETR® AM-FM stereo with preset of 12 FM/6 AM stations, seek and scan, cassette player with auto reverse and search/repeat, automatic tone control, TheftLock® and clock (includes steering wheel radio controls)			■
• Remote Keyless Entry — includes instant alarm, perimeter lighting, security feedback and individually programmable transmitters			■
• Seat — 6-way power, driver		■	
• Speakers — Concert Sound II 6-speaker system		■	
• Stripes — accent	■	■	
• Suspension — automatic level control			■
• Theft-Deterrent System — with alarm, starter interrupt and central unlocking			■
• Tires — P205/70R15 steel-belted, radial-ply, all-season whitewall	■	■	
• Trunk Convenience Net	■	■	
• Trunk Lock Release — electric, remote		■	
• Wheels — 15" aluminum	■	■	

SPECIFICATIONS

ENGINE

Type	3.8-liter 3800 SFI™ Series II V6
Horsepower	205 @ 5200 rpm
Torque	210 @ 4000 rpm

TOWING

3800 Series II V6	1,000 maximum gross trailer rate (lbs.) ⁽¹⁾
-------------------	--

CAPACITY

Trunk, cu ft	17.0
Fuel tank, gal.	18.0
Base curb weight, lb.	3,441

DIMENSIONS (inches)

Length	200.8
Width	74.4
Height	55.6
Wheelbase	110.8
Front tread	60.4
Rear tread	60.4

INTERIOR (inches)

Legroom	42.6/40.4
Headroom	38.8/37.8
Shoulder room	59.1/58.9
Hip room	54.6/54.4

(1) Sequential port fuel injection.

(2) When properly equipped. Includes weight of trailer, cargo, passengers and equipment. All towing recommendations are subject to change. Check with your Buckle dealer for the latest information. Trailer tongue load should be 10% of the maximum trailer weight but should not exceed the load rating specified for that vehicle, engine or hitch combination.

(3) Requires Class II five-manute trailer hitch.

Courtesy Transportation IS JUST ONE OF MANY LESABRE COURTESIES.



We want you to have more than a quality automobile, we want you to have a quality ownership experience as well.

That's why Buick's Quality Plus program is standard on every LeSabre. These are just some of its advantages:

- 31 • **Quality Plus Delivery.** Your LeSabre will be ready to go when you pick it up, and you'll be thoroughly familiarized with its many features.
- **New Vehicle Limited Warranty.** You're covered for 3 years/36,000 miles, whichever comes first.*
- **Courtesy Transportation.** When you come in for service, we'll give you a ride to wherever you need to go within 10 miles of the dealership.*
- **Roadside Assistance.** Available 24 hours a day throughout the warranty period.
- **Customer Assistance.** If you have questions or need assistance, just call our toll-free number: 1-800-4A-BUICK.

*See your dealer for details.



At Buick, we offer real cars through and through, like LeSabre. Cars that are solid and substantial, with more power than you may ever need. Cars that are unapologetically comfortable, with wide seats and room to stretch. Cars that are accommodating enough for the family and stylish enough for a night on the town. Buicks are designed to fulfill your desire for a thoroughly enjoyable driving experience.

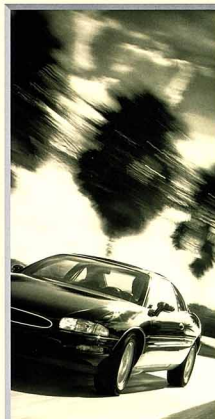
real power. real comfort. real style.



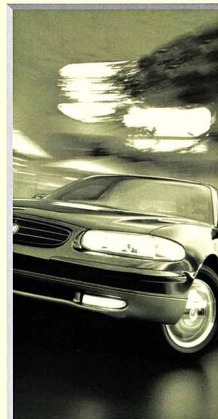
LESABRE



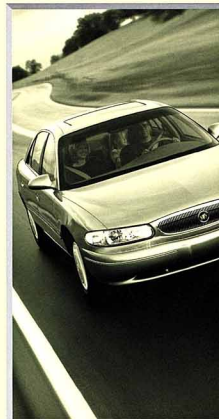
PARK AVENUE



RIVIERA



REGAL



CENTURY

Buick

isn't it time for a real car?SM





BY WEB OR BY PHONE.

WE'RE READY, WILLING AND *accessible.*

For an easy way to find peace of mind, just visit www.lesabre.buick.com on the Internet. On our frequently updated Web site, you can access more information, including competitive comparisons, current offers and financing or leasing options. You can also send us an E-mail or locate one of more than 2,800 dealers, many of whom have their own Web sites. Another way to get customer assistance and information is to call our toll-free number, 1-800-4A-BUICK. Either way, we're glad to be of assistance.



A word about this catalog. We have tried to make this catalog comprehensive and factual. We reserve the right, however, to make changes at any time, without notice, in prices, colors, materials, equipment, specifications, models and availability. Some information may have been updated since the time of printing, so please check with your Buick dealer for complete details. Buick reserves the right to lengthen or shorten the model year for any product for any reason, or to start and end model years at different times. Some models as shown may not be available in California, Oregon, Idaho and Washington.

Child safety. Children generally are safer if they are secured in a rear seat using the appropriate child safety seats and restraints, which is why General Motors® recommends that child safety seats be properly secured in a vehicle's rear seat. Never place a rear-facing infant restraint in the front seat of any vehicle equipped with an active air bag. See your vehicle Owner's Manual and child safety seat instructions for more safety information.

Engines. Buicks are equipped with engines produced by different operating units of GM, its subsidiaries or suppliers to GM worldwide.

Assembly. Buicks and their components are assembled or produced by different operating units of General Motors, its subsidiaries or suppliers to GM worldwide. We sometimes find it necessary to produce Buicks with different or differently sourced components than originally scheduled. Since some options may be unavailable when your vehicle is assembled, we suggest you verify that your vehicle includes the equipment you ordered or, if there are changes, that they are acceptable to you.

Updated service information. Buick regularly sends its dealers useful service bulletins about Buick products. Buick monitors product performance in the field. We then prepare bulletins for servicing our products better. You can receive these bulletins too. Ask your dealer or, for ordering information, call 1-800-551-4123.

Warranty. The GM 3-year/36,000-mile New Vehicle Limited Warranty covers repairs for any new Buick, including labor and parts, to correct any defects in material or workmanship occurring during the warranty period. The complete vehicle (including tires) will be covered for 3 years or 36,000 miles, whichever comes first. See your Buick dealer for terms of this limited warranty.

The GM Card.* For information or to apply for The GM MasterCard,® call 1-800-8GM-CARD.

SmartLease® by GMAC.® For information about SmartLease or any of the other quality GMAC financing options, see your Buick dealer or call 1-800-32-SMART.



Buick recognizes the importance of mobility to everyone's life and, therefore, offers financial assistance to persons with disabilities through the General Motors Mobility Program. This program can provide up to \$1,000 reimbursement toward the cost of aftermarket mobility adaptive equipment for drivers or passengers, \$200 of which may be applied toward a siren detector for drivers who are deaf or hard-of-hearing. For details and free resource information, call 1-800-323-9935 (TTY users: 1-800-833-9935).



©1998 GM Corp. All rights reserved.
Lesabre and Buick are registered trademarks
of GM Corp. Buckle up, America!



Printed on
recyclable paper from
a renewable source.

Ident. No. 99-LE-400
Printed in U.S.A.
500m



LeSabre *by* Buick

PEACE OF MIND

