



# 2000 TUNDRA

Tundra V8 Access Cab SR5 in Sunfire Red Pearl with available 5-spoke aluminum alloy wheels, and accessory tonneau cover and running boards.

Have we gone too far in building a truck? We don't think so. And when you feel the power and torque of Tundra's i-Force V8 engine, or when you compare Tundra's standard payload and towing capabilities, we think you'll agree. Maybe the others haven't gone far enough. The new Toyota Tundra. It's the full-size truck only Toyota could build.

**STANDARD FEATURES**
**REGULAR CAB (4X2 ONLY)\***

- Aerodynamic multi-reflector halogen headlamps with auto-off feature
- High Solar Energy-Absorbing (HSEA) glass
- Dual black outside mirrors
- Painted front bumper and grille
- Rear center high-mount stop lamp (CHMSL) with integrated cargo lamp
- Locking fuel-filler door with cap holder
- Removable locking tailgate
- P245/70R16 tires on steel wheels
- Fabric bench seat with vertically adjustable headrests and fold-down center armrest
- Driver and front passenger air bag Supplemental Restraint System (SRS) with passenger-side cutoff switch\*\*
- Cut-pile carpeting
- Speedometer, LCD odometer with twin tripmeters, fuel level and coolant temperature gauges
- Dual cup holders
- Driver and passenger sun visors
- Mist-cycle windshield wipers
- Dual 12-volt auxiliary power outlets
- Digital quartz clock
- Deluxe AM/FM ETR/Cassette with 4 speakers



Regular Cab available full wheel cover

**V8 REGULAR CAB SR5 (4X4 ONLY) ADDITIONAL STANDARD FEATURES**

(In addition to/in place of Regular Cab Standard Features)

- Chrome body side molding insert, grille, wheel arch moldings, and front and rear bumpers
- Color-keyed outside door handles
- P245/70R16 tires on styled steel wheels
- Front and rear mudguards
- Variable intermittent windshield wipers
- Cruise control
- Tachometer
- Driver and passenger sun visors with extensions
- Touch-Select 4-wheel drive system
- Defroster-linked CFC-free air conditioning
- Tilt steering wheel


 SR5 standard styled steel wheel  
 SR5 available 3-spoke aluminum alloy wheel  
 SR5 available 5-spoke aluminum alloy wheel

**ACCESS CAB SR5 ADDITIONAL STANDARD FEATURES\***

(In addition to/in place of Regular Cab SR5 Standard Features)

- Tilt-out rear quarter windows with privacy glass
- Front fabric 60/40 split-bench seat with vertically adjustable headrests and fold-down center console armrest with dual cup holders (automatic models)
- Front fabric captain's chairs with vertically adjustable headrests (manual models)
- Rear 60/40 split-bench with vertically adjustable headrests and fold-down center armrest with dual cup holders
- 4WDemand 4-wheel drive system (V6 4WD models)
- Touch-Select 4-wheel drive system (V8 4WD models)
- Deluxe AM/FM ETR/Cassette with 4 speakers


 Access Cab SR5 standard styled steel wheel  
 Access Cab SR5 available 3-spoke aluminum alloy wheel  
 Access Cab SR5 available 5-spoke aluminum alloy wheel

**V8 ACCESS CAB LIMITED ADDITIONAL STANDARD FEATURES**

(In addition to/in place of Access Cab SR5 Standard Features)

- Color-keyed fender flares with integrated mudguards, front bumper and body side molding
- Fog lamps
- Power color-keyed exterior mirrors
- Sliding rear window with privacy glass
- P265/70R16 tires on 5-spoke aluminum alloy wheels
- Power windows and door locks
- Lighting Package
- Illuminated driver and passenger dual sun visors with extensions
- Touch-Select 4-wheel drive system (4WD models)
- Deluxe 3-in-1 AM/FM ETR/Cassette/CD with 6 speakers



Access Cab Limited standard 5-spoke aluminum alloy wheel

\*Shown with available equipment.

\*\*The Toyota driver and front passenger air bags are a Supplemental Restraint System (SRS) designed to inflate in a severe frontal collision. In all other accidents, seatbelts offer primary protection, and the air bags will not inflate. Do not sit or place objects close to an air bag. To minimize the risk of severe injury or death in all types of crashes, seatbelts must be worn at all times by all vehicle occupants. Do not use a rearward-facing child seat in any front passenger seat. The force of a deploying air bag SRS may cause serious injury or death. For more information on air bags and instructions on child seat usage, see the Owner's Manual.

**COLORS**


Natural White with Gray, Oak or Light Charcoal Interior<sup>1</sup>



Platinum Metallic with Gray Interior<sup>2,3</sup>



Thunder Gray Metallic with Oak or Light Charcoal Interior<sup>1</sup>



Golden Sand Metallic with Oak Interior<sup>3</sup>



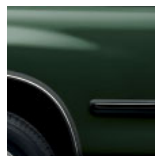
2-Tone Imperial Jade Mica/Thunder Gray Metallic with Oak Interior<sup>5</sup>



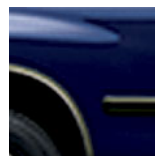
Autumn Red Mica with Oak Interior<sup>3</sup>



Sunfire Red Pearl with Oak or Light Charcoal Interior<sup>1</sup>



Imperial Jade Mica with Oak or Light Charcoal Interior<sup>1</sup>



Stellar Blue Pearl with Gray, Oak or Light Charcoal Interior<sup>3,4</sup>



Black with Gray, Oak or Light Charcoal Interior<sup>1</sup>

<sup>1</sup>Oak only on Base model and with available Limited Leather Trim Package.

<sup>2</sup>Not available on Base model.

<sup>3</sup>Not available on Limited.

<sup>4</sup>Oak only on Base model.

<sup>5</sup>Available on Tundra Limited only.

**OPTIONS AND PACKAGES**
**Regular Cab (4x2 only)**

- **All-Weather Guard Package** — includes heavy-duty battery, starter and heater
- Fog lamps
- 4-wheel Anti-lock Brake System (ABS) — includes Daytime Running Lights (DRL)
- Full wheel covers
- Mudguards

**Regular Cab SR5 (4x4 only)**

- **All-Weather Guard Package** — heavy-duty battery, starter and heater
- Fog lamps
- 4-wheel Anti-lock Brake System (ABS) — includes Daytime Running Lights (DRL)
- Styled steel wheels with P265/70R16 tires and chrome wheel arch molding
- 3-spoke aluminum alloy wheels with P245/70R16 tires
- 5-spoke aluminum alloy wheels with P265/70R16 tires and chrome wheel arch molding

**Access Cab SR5**

- **All-Weather Guard Package** — heavy-duty battery, starter and heater
- Fog lamps
- 4-wheel Anti-lock Brake System (ABS) — includes Daytime Running Lights (DRL)
- Styled steel wheels with P265/70R16 tires and chrome wheel arch molding
- Styled steel wheels with P265/70R16 tires and black fender flares with integrated mudguards
- 3-spoke aluminum alloy wheels with P245/70R16 tires
- 5-spoke aluminum alloy wheels with P265/70R16 tires and chrome wheel arch molding
- 5-spoke aluminum alloy wheels with P265/70R16 tires and black fender flares with integrated mudguards

**V8 Access Cab Limited**

- **All-Weather Guard Package** — heavy-duty battery, starter and heater
- 4-wheel Anti-lock Brake System (ABS) — includes Daytime Running Lights (DRL)
- Captain's chairs
- **Leather Trim Package** — includes leather-trimmed captain's chairs with power adjustable driver seat and wood grain-style interior trim

- Sliding rear window
- Painted rear bumper
- Tilt steering wheel — includes variable intermittent windshield wipers
- Defroster-linked CFC-free air conditioning
- Delete Package option — replaces fabric seats and cut-pile carpeting with vinyl

- 60/40 split-bench seat
- Captain's chairs
- Convenience Package — power windows and door locks, chrome power mirrors, driver and passenger dual sun visors with vanity mirror, Lighting Package and sliding rear window with privacy glass
- Deluxe 3-in-1 AM/FM ETR/Cassette/CD with 4 speakers

- **TRD Off-Road Package (4x4 models only)** — off-road tuned suspension, Bilstein® shock absorbers, BFGoodrich P265/70R16 tires on 5-spoke aluminum alloy wheels, black fender flares with integrated mudguards and fog lamps
- Captain's chairs (automatic models, standard on manual models)
- **Convenience Package** — power windows and door locks, chrome power mirrors, cruise control (standard on V8), driver and passenger dual sun visors with vanity mirror, Lighting Package and sliding rear window with privacy glass
- **Style Package (V8 4x2 model only)** — 3-spoke aluminum alloy wheels with P245/70R16 tires and captain's chairs
- Deluxe 3-in-1 AM/FM ETR/Cassette/CD with 6 speakers

- **TRD Off-Road Package (4x4 models only)** — off-road tuned suspension, Bilstein® shock absorbers, BFGoodrich P265/70R16 tires on 5-spoke aluminum alloy wheels
- Premium 3-in-1 AM/FM ETR/Cassette/6-disc CD changer with 6 speakers

For details on vehicle specifications, standard features and available equipment in your area, contact your Toyota dealer. A vehicle with particular equipment may not be available at the dealership. Ask your Toyota dealer to help locate a specifically equipped vehicle. Hawaii and in other regions. Specifications, standard features and available equipment are based upon information available at the time of printing and are subject to change without notice. Specifications, standard features and available equipment are for mainland U.S.A. vehicles only and may differ in the state of Hawaii and in other regions.

**SPECIFICATIONS**

	Regular Cab Base 4x2	V8 Regular Cab SR5 4x4	Access Cab SR5 4x2	4x4	V8 Access Cab Limited 4x2	4x4
<b>Mechanical/Performance</b>						
<b>Engine</b>						
3.4-liter DOHC 24-valve EFI V6 190 hp @ 4,800 rpm; 220 lb.-ft. @ 3,600 rpm	Standard	NA	Standard	Standard	NA	NA
4.7-liter DOHC 32-valve EFI i-Force V8 245 hp @ 4,800 rpm <sup>1</sup> ; 315 lb.-ft. @ 3,400 rpm	NA	Standard	Available	Available	Standard	Standard
<b>Ignition</b>						
Distributorless Toyota Direct Ignition system (TDI)						
<b>Transmission</b>						
5-speed manual overdrive	Standard	NA	Standard <sup>2</sup>	Standard <sup>2</sup>	NA	NA
4-speed electronically controlled transmission (ECT) with overdrive	Available	Standard	Available <sup>3</sup>	Available <sup>3</sup>	Standard	Standard
<b>Body construction</b>						
Welded steel cab and bed; one-piece rail ladder frame with eight cross members and fully boxed front sub-frame						
<b>Suspension</b>						
Coil-spring double-wishbone independent front suspension with low-pressure gas-filled shock absorbers and stabilizer bar; Leaf spring rear suspension with low-pressure gas-filled shock absorbers						
<b>Steering</b>						
Engine speed-sensing power-assisted rack-and-pinion steering						
Turning circle diameter (ft.)	44.9	44.3	44.9	44.3	44.9	44.3
<b>Brakes</b>						
Power-assisted ventilated front disc/rear drum with 4-piston front calipers, and rear load-sensing proportioning and bypass valve (LSP&BV)						
4-wheel Anti-lock Brake System (ABS)	Available on all models, includes Daytime Running Lights (DRL)					
Rear differential ratio — V6 (manual/automatic)	4.083/4.083	NA	4.083/4.083	4.100/4.300	NA	NA
— V8 (automatic)	NA	3.909	3.916	3.909	3.916	3.909
<b>Exterior Dimensions (IN.)</b>						
Overall height	70.5	71.1	70.7 (V8: 70.5)	71.5 (V8: 71.3)	70.9	71.7
Overall width	75.2	75.2	75.2	75.2	79.3	79.3
Length with rear bumper	217.5	217.5	217.5	217.5	217.5	217.5
Wheelbase	128.3	128.3	128.3	128.3	128.3	128.3
Tread width (front/rear)	66.2/64.9	65.9/64.9	66.2/64.9	65.9/64.9	66.2/64.9	65.9/64.9
Inside bed length/width	98.2/61.2	98.2/61.2	76.5/61.2	76.5/61.2	76.5/61.2	76.5/61.2
width between wheelwells/height	49.3/16.7	49.3/16.7	49.3/16.7	49.3/16.7	49.3/16.7	49.3/16.7
<b>Interior dimensions front/rear (IN.)</b>						
Head room	40.3/NA	40.3/NA	40.3/37.0	40.3/37.0	40.3/37.0	40.3/37.0
Shoulder room	62.4/NA	62.4/NA	62.4/63.2	62.4/63.2	62.4/63.2	62.4/63.2
Hip room	59.3/NA	59.3/NA	59.3/56.6	59.3/56.6	59.3/56.6	59.3/56.6
Leg room	41.5/NA	41.5/NA	41.5/29.6	41.5/29.6	41.5/29.6	41.5/29.6
<b>Off-Highway</b>						
Approach/departure angle (degrees) — V6	26/23	NA	27/23	28/23	NA	NA
— V8	NA	27/24	26/23	28/23	27/23	29/24
Minimum running ground clearance (in.)	10.4	11.2	10.6 (V8: 10.4)	11.4 (V8: 11.2)	10.8	11.6
Underbody protection: Skid plates under front suspension, transfer case and fuel tank on 4x4 models						
4x4 transfer case ratios (high/low)	NA	1.000/2.566	NA	1.000/2.566	NA	1.000/2.566
<b>Weights and Capacities</b>						
Curb weight (lbs.) — V6 (manual/automatic)	3,795/3,839	NA	4,088/4,133	4,320/4,376	NA	NA
— V8 (automatic)	NA	4,321	4,276	4,518	4,402	4,664
Gross Vehicle Weight Rating — GVWR (lbs.) — V6	5,500	NA	5,700	6,000	NA	NA
— V8	NA	6,200	6,200	6,050	6,200	6,050
Payload <sup>4</sup> (lbs.) — V6 (manual/automatic)	1,705/1,661	NA	1,612/1,567	1,680/1,624	NA	NA
— V8 (automatic)	NA	1,879	1,924 <sup>5</sup>	1,532	1,798	1,406
Towing capacity <sup>6</sup> (lbs.) — V6 (manual/automatic)	5,250/5,200	NA	4,950/4,900	5,000/4,950	NA	NA
— V8 (automatic)	NA	7,200	7,200	7,100	7,200	7,100
Gross Combined Weight Rating — GCWR (lbs.) — V6	9,200	NA	9,200	9,500	NA	NA
— V8	NA	11,800	11,800	11,800	11,800	11,800
Fuel tank (gals.) 26.4	26.4	26.4	26.4	26.4	26.4	26.4
<b>Tires</b>						
Size	P245/70R16	P245/70R16	P245/70R16	P245/70R16	P265/70R16	P265/70R16
Type	All-Season	Mud-and-Snow	All-Season	Mud-and-Snow	Mud-and-Snow	Mud-and-Snow
Spare	Full-size	Full-size	Full-size	Full-size	Full-size	Full-size
<b>Mileage Estimates (MPG City/Highway)<sup>7</sup></b>						
V6 5-speed manual	16/20	NA	16/20	15/18	NA	NA
V6 4-speed automatic	16/19	NA	16/19	15/18	NA	NA
V8 4-speed automatic	NA	14/17	15/18	14/17	15/18	14/17

<sup>1</sup>240 hp when equipped with California emissions.

<sup>2</sup>Not available with V8.

<sup>3</sup>Standard with V8.

<sup>4</sup>Including weight of occupants, equipment and cargo.

<sup>5</sup>2,011 lbs. with available Style Package.

<sup>6</sup>All figures reflect the weight of occupants, equipment and cargo. For each model, a Class III or IV hitch receiver and sway control device are either required or recommended additional equipment. For V6 models, an alternator upgrade is also recommended additional equipment. See your Toyota dealer for details.

<sup>7</sup>Preliminary EPA mileage estimates determined by Toyota. Final EPA mileage estimates not available at time of printing. See your Toyota dealer for details.