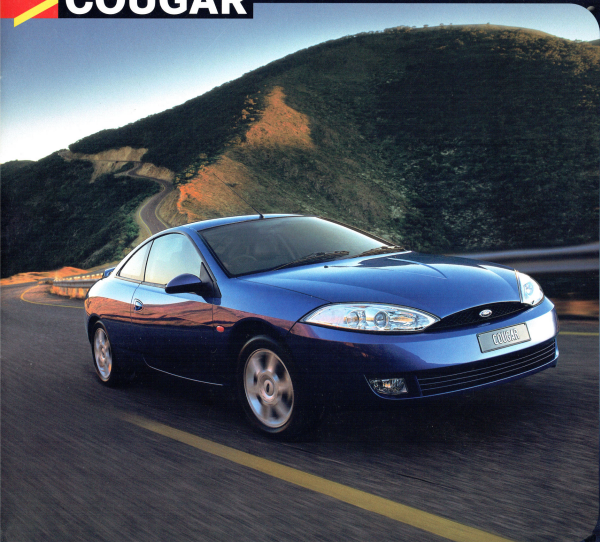
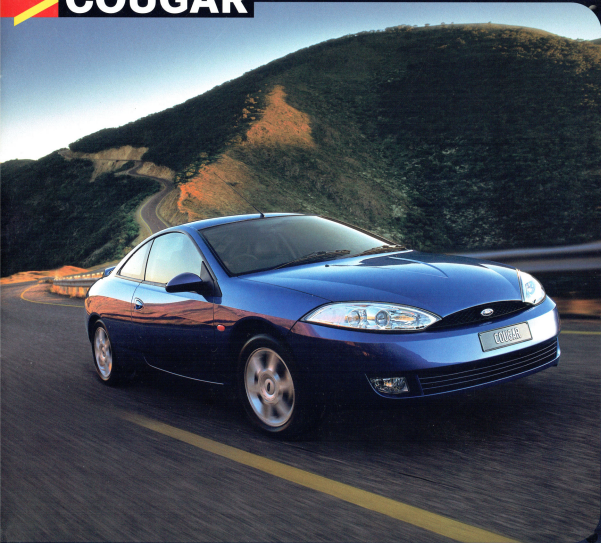
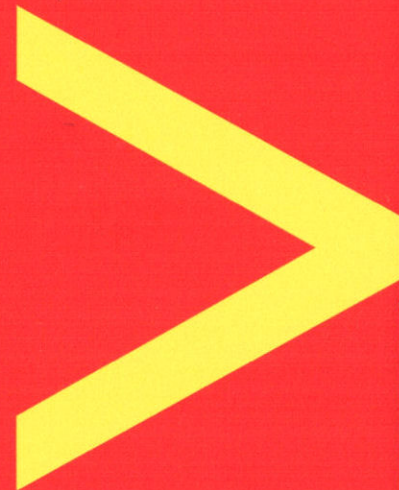


**COUGAR**



**> COUGAR**

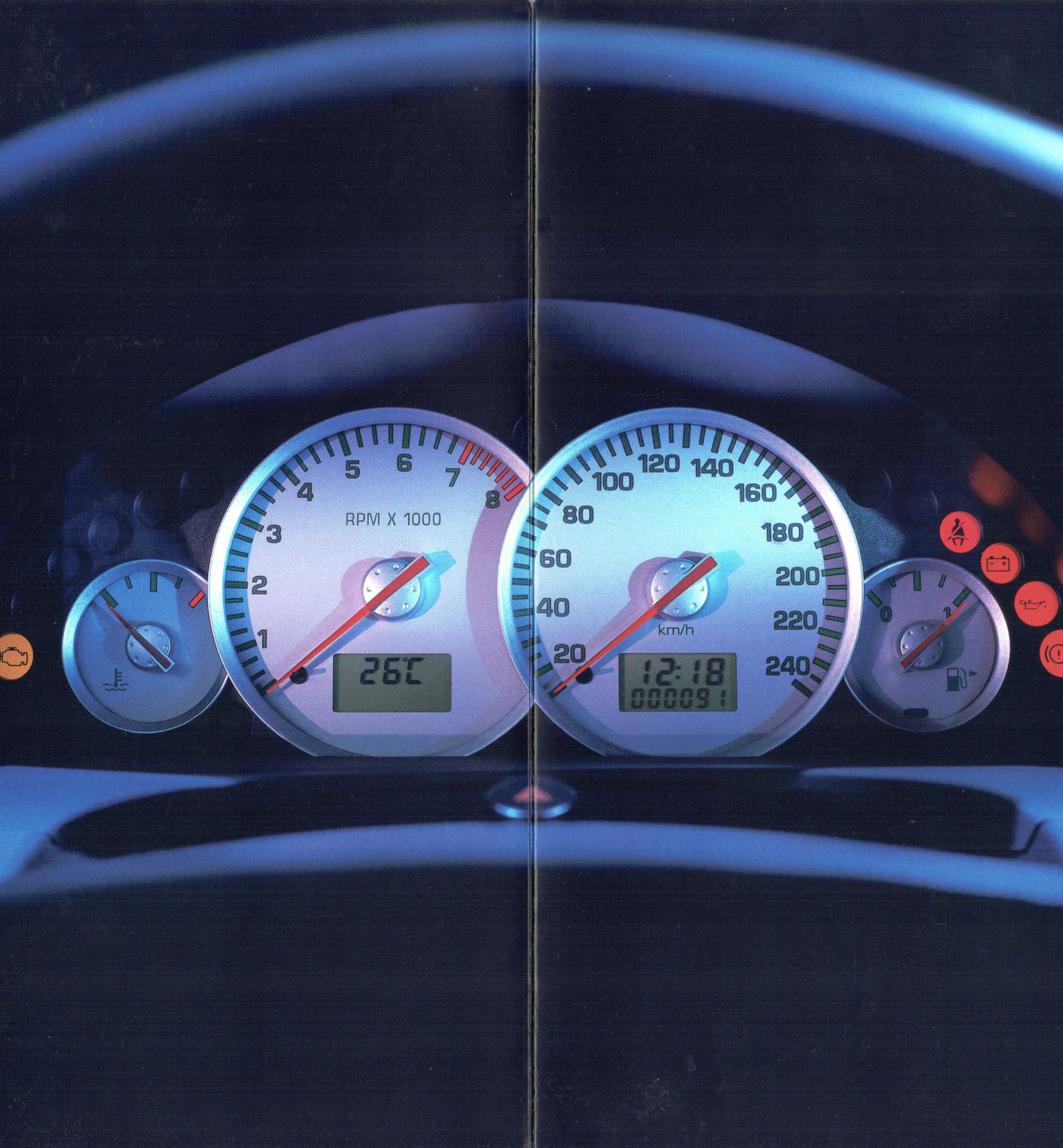




## EXCITE YOUR DEEPEST DRIVING INSTINCTS

> The fresh styling is aerodynamically efficient to slice through the air. The stance is low and taut. The projector headlights, fog lights and 6-spoke alloy wheels signal its sporting character. Responsive and versatile, it will excite your deepest driving instincts. And when it's late and you just want to get home, Cougar is supple, reassuring and comfortable. A car of many moods. While life is an open road, how you get there really counts.





## EXCITE YOUR DEEPEST DRIVING INSTINCTS

> The fresh styling is aerodynamically efficient to slice through the air. The stance is low and taut. The projector headlights, fog lights and 6-spoke alloy wheels signal its sporting character. Responsive and versatile, it will excite your deepest driving instincts. And when it's late and you just want to get home, Cougar is supple, reassuring and comfortable. A car of many moods. While life is an open road, how you get there really counts.

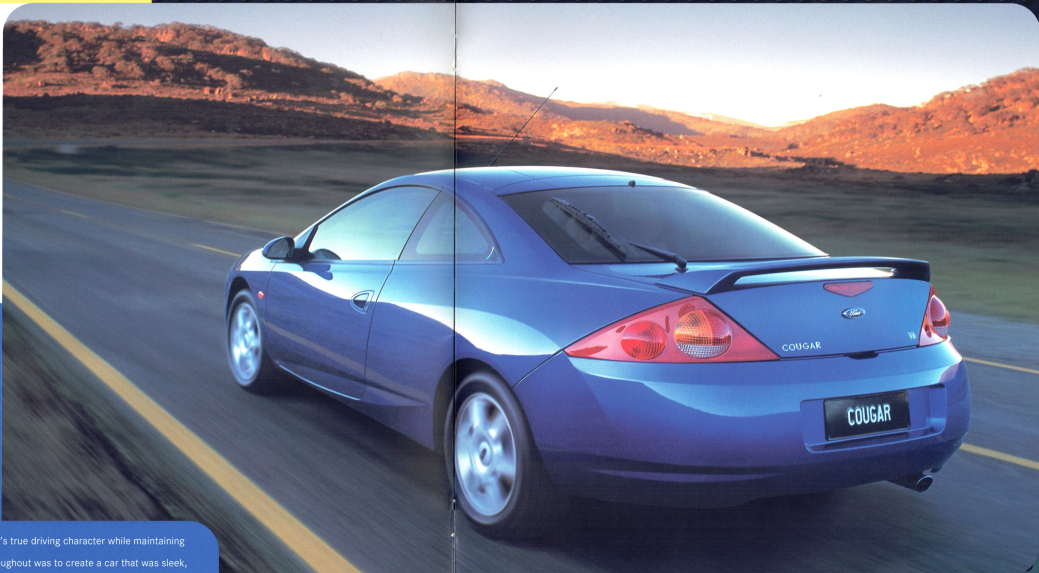




**BOLD.  
CONFIDENT.  
STRONG.  
A DRIVING  
MACHINE.**

> For Ford Cougar, functionality was a fundamental design principle. Because it is a machine, a driving machine. And one that delivers function with style. As Darrell Behmer, Cougar Chief Designer, remarked:

"We wanted it to satisfy the emotional instinct and exude a certain strength - underlining the car's true driving character while maintaining an air of sophistication. Our goal throughout was to create a car that was sleek, with classical coupe proportions."





## A SPACIOUS CABIN SYNCHRONISED AROUND YOU.

> Inside is rarefied, fluent. Everything looks, sounds, feels, even smells right. The sports seats provide the perfect fit and grip. Your hand moves easily from the leather-trimmed steering wheel to the short-throw gearshift. The instruments and trip computer feed back useful information. Front and side airbags help to protect you and the front seat passenger. Every element is synchronised to allow you to get the most from your car.



> Premium CD compatible radio/cassette, security coded.



> Enjoy the comfort of semi-automatic climate control.



> Controls for Cougar's power windows and side mirrors.





**HOW TIME  
FLIES WHEN  
YOU'RE  
HAVING FUN.**

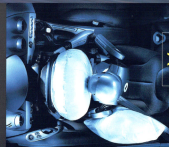
> Strong and spirited, yet smooth, refined and deceptively quiet; that's Cougar with its powerful 2.5 litre Duratec V6 engine. Throttle response is virtually instantaneous, and the engine is delightfully free revving. The slick, close-ratio manual gearshift brilliantly utilises Cougar's low-speed torque. Rack and pinion power steering, ABS disc brakes, traction control and fully independent suspension complete the performance equation.



> Cougar's 2.5 litre Duratec V6 engine develops 125 kW @ 6250 rpm and produces 220 Nm of torque @ 4250 rpm.



> MacPherson struts and low-friction variable-rate power-assisted steering delivers precise, informative and reassuring steering.



> Head and chest combination side airbags are designed to cushion the head as well as the chest during a side impact.





### New Vehicle Warranty.\*

Covers your Cougar against defects in factory materials or workmanship for the first 3 years or 100,000 km - whichever occurs first.

When fitted at or prior to the time of vehicle delivery, Ford Approved Accessories are also covered by the Ford 3 Year/100,000 km 'Bumper to Bumper' Warranty.

### 5 Year Perforation Corrosion Warranty.\*

Covers the original vehicle's body against perforation corrosion for the first five years of its life.

FTE Premium Service is the key to maintaining your Cougar in peak operating condition at all times. It is a truly personalised and interactive service experience. At your FTE servicing dealership, you will be assigned your own personal FTE Dealer Service Representative. This person will come to know your vehicle almost as well as you do. You are free at any time to call and discuss any aspect of your Cougar driving experience. When it's time for service, your FTE Dealer Service Representative will run through all the details with you. Any work is agreed upon by you before it is carried out. And all work is conducted by specially trained FTE Dealer technicians. A loan vehicle will be offered to you whenever your Cougar is at an FTE dealership for service. You are always welcome to consult with your FTE Dealer service technician. And while your Cougar is naturally covered by the Ford warranties explained in this brochure, normal service repairs are performed to an agreed up-front price. In addition to FTE Premium Service there is FTE Premium Assist\*

### Ford Credit Financial Services.

Ford Leasing and Red Carpet Options are available to approved applicants of Ford Credit Australia Limited. Enquire at your Authorised FTE Dealer.

### Fleet Communication Centre.

Our Fleet Communication Centre is available to assist fleet customers with information on FTE products and services. Call 1800 673 207.

for three years. Valuable benefits also include:

- > Free fuel to get you on your way should you inadvertently run out.
  - > Centralised service booking facility.
  - > Emergency vehicle access/replacement of lost keys.
  - > Travel advice/benefits.
- Among the many benefits offered in the event of a mechanical breakdown are:
- > Roadside Assistance.
  - > Emergency towing/transportation.
  - > Emergency accommodation.
  - > Urgent message relay.
  - > Accident co-ordination.
  - > Medical advice.
  - > Legal advice.

For further information visit

> [www.fte.ford.com.au](http://www.fte.ford.com.au) on the

Internet, or phone 1800 035 666.



\*Conditions and exclusions apply. See your Authorised Ford Dealer for details.

This brochure is designed to provide you with a general introduction to the Ford Products (including available optional equipment) referred to, and should be read in conjunction with the latest specification sheet. Because of changes in conditions and circumstances Ford reserves the right, without notice, to discontinue or change the features, designs, materials, colours and other specifications and the prices of its products, and to alter or discontinue or temporarily withdraw any such products from the market without incurring any liability to any prospective purchaser or purchaser. The latest specification sheet should be referred to for information on the availability, pricing and use of optional equipment. Always consult an Authorised Ford Dealer for the latest information with respect to features, specifications, prices, colour equipment, and availability before deciding to place an order. FORD MOTOR COMPANY OF AUSTRALIA LIMITED, (A.B.N. 30 004 10 223) Registered Office: 1735 Sydney Road, Camperdown, New South Wales, Postal: Fremont Hill 2050.

### Engine

Engine Type	Duratec 24V, 2.5 litre, quad cam, sequentially injected V6.	
Compression ratio	10:1	
Power	125 kW @ 6250 rpm	
Torque	220 Nm @ 4250 rpm	
Engine management	EEC-V	

### Transmission/Ratios

	Manual	Automatic
1st	3.417	2.89
2nd	2.136	1.57
3rd	1.483	1.00
4th	1.114	0.69
5th	0.854	-
Reverse	3.462	2.31
Final Drive Ratio	3.82	3.77

### Suspension

<b>Front</b>	Independent MacPherson struts with angled coil spring/damper units & lower A-arms mounted on optimised vertical bushes. Suspension arms, anti-roll bar and steering rack mounted on separate perimeter front subframe.
<b>Rear</b>	Independent "Quadralink" system with strut-type coil spring/damper units, two transverse and one trailing arm each side, incorporating passive rear wheel steering. Rear anti-roll bar.

### Brakes

<b>Front</b>	278 mm diam. by 24 mm ventilated discs.
<b>Rear</b>	252 mm ventilated discs.
<b>Tyre size</b>	215/50 VR16
<b>ABS</b>	3-channel fitted with electronic brake force distribution (EBD).

### Fuel Economy<sup>(1)</sup>

	Manual	Automatic
City Cycle (L/100 km)	11/100	11/100
Highway Cycle (L/100 km)	6.6/100	6.6/100
Fuel Tank Capacity (litres)	60	
Turning Circle (m)	10.9	

### Dimensions

Exterior (mm)	Interior (mm)		
	Front		Rear
Overall length	4699		
Overall width	1780 <sup>(2)</sup>	Headroom	879
Overall height	1325	Shoulder room	1368
Wheelbase	2704	Max legroom	1081
Front track	1506	Max legroom	843
Rear track	1491	Boot capacity (litres)	350

(1) These figures are obtained from controlled laboratory tests conducted on behalf of Ford Motor Company of Australia Limited to Australian Standards AS1977-1990 and are provided to assist you in comparing the fuel consumption of Cougar with other vehicles. The actual fuel consumption you achieve will depend, however, on many factors, including your driving habits, the prevailing conditions and your vehicle's equipment, condition and use. (2) Excludes exterior side mirrors.

AN OWNERSHIP  
EXPERIENCE  
YOU'RE GOING  
TO LOVE.

FTE PREMIUM  
SERVICE  
EXPERIENCE.





 **COUGAR**

