

ENGINE

<b>Type</b>	90° V8, aluminum block and heads, certified Ultra-Low Emission Vehicle (U-LEV)
<b>Displacement</b>	4.3 liters (262 cubic inches)
<b>Valvetrain</b>	Four cam, four valves per cylinder, with continuously Variable Valve Timing with intelligence (VVT-i)
<b>Compression Ratio</b>	10.5:1
<b>Horsepower at RPM</b>	290 hp @ 5,600
<b>Torque at RPM</b>	320 lb-ft @ 3,400

DRIVETRAIN

<b>Transmission</b>	Five-speed automatic Electronically Controlled Transmission with intelligence (ECT-i). Overdrive fifth gear, auto-select shift program, engine/transmission networking, flex-lockup torque converter.
<b>Drive Wheels</b>	Rear, with standard Traction Control (TRAC).
<b>Final Drive Ratio</b>	3.27:1

BODY, DIMENSIONS

<b>Type</b>	Five-passenger luxury sedan
<b>Construction</b>	Welded-steel unibody
<b>Overall Length</b>	196.7 in
<b>Width</b>	72.0 in
<b>Height</b>	58.7 in (57.9 in with available Adaptive Variable Air Suspension)
<b>Wheelbase</b>	115.2 in
<b>Ground Clearance</b>	5.7 in (5.9 in with available Adaptive Variable Air Suspension)
<b>Curb Weight</b>	3,945 lb
<b>Fuel-tank Capacity</b>	22.2 gallons
<b>Trunk Capacity</b>	20.2 cubic feet (without rear A/C) 17.5 cubic feet (with rear A/C)
<b>Headroom</b>	39.6/38.0 in (front/rear) 38.1/37.9 in (front/rear) with available moonroof
<b>Legroom</b>	44.0/37.6 in (front/rear)
<b>Shoulder Room</b>	58.3/58.2 in (front/rear)



CHASSIS

<b>Vehicle Stability Control (VSC)</b>	Integrates Anti-lock Braking System (ABS), Brake Assist and Traction Control (TRAC).
<b>Suspension</b>	<p>Front: Independent, double-wishbone with high-mount aluminum upper arm, coil springs, gas-pressurized shock absorbers with internal rebound springs, anti-lift and anti-squat geometry, stabilizer bar.</p> <p>Rear: Independent, double-wishbone with aluminum upper arm and carrier, coil springs, gas-pressurized shock absorbers, anti-lift and anti-squat geometry, stabilizer bar.</p>
<b>Steering</b>	Vehicle-speed-sensing, progressive power-assisted rack-and-pinion. 3.52 turns, lock to lock.
<b>Brakes</b>	Four-wheel vented power-assisted discs, with four-sensor, four-channel Anti-lock Braking System (ABS) with Brake Assist, integrated with Vehicle Stability Control (VSC). Four-piston front calipers. 12.4-in (front), 12.2-in (rear) discs.
<b>Wheels</b>	17 x 7.5-in alloy wheels Optional: 17 x 7.5-in Lexus Chrome Wheels
<b>Original Equipment Tires<sup>1</sup></b>	Summer Bridgestone Turanza ER33 P225/55HR17 95H (Code: 096148) or Summer Dunlop SP Sport 270 P225/55HR17 95H (Code: 0391-01). Optional: All-Season Dunlop SP Sport 5000 P225/55HR17 95H (Code: 0376-43). Euro-tuned Sport Suspension: Summer Dunlop SP Sport 270 P225/55WR17 97W (Code: 0392-01). Full-size spare with alloy wheel.

PERFORMANCE

<b>0-60 MPH Acceleration</b>	6.3 seconds <sup>2</sup>
<b>1/4-Mile Acceleration</b>	14.7 seconds <sup>2</sup>
<b>Top Track Speed</b>	131 mph (electronically limited) <sup>2</sup>
<b>Estimated Fuel Consumption</b>	19/25 mpg city/highway <sup>3</sup>
<b>Aerodynamic Drag Coefficient</b>	0.26 with standard suspension or available Euro-tuned Sport Suspension (0.25 with available Adaptive Variable Air Suspension)
<b>Turning Circle (curb-to-curb)</b>	37.4 ft

TOTAL UNITS PRODUCED

<b>Total</b>	21,461
--------------	--------

DISCLAIMERS

<sup>1</sup>17 or 18 in. tires are expected to experience greater wear than conventional tires. Tire life may be substantially less than 20,000 miles, depending on driving conditions.

<sup>2</sup>Performance capacity figures are for comparison only and were obtained with prototype vehicles by professional drivers using special safety equipment and procedures. Do not attempt.

<sup>3</sup>Actual mileage will vary with options, driving conditions, driving habits and vehicle's condition. Results reported to EPA indicate that the majority of vehicles with these estimates will achieve between 16 and 22 mpg in the city and between 21 and 29 mpg on the highway. (See [www.fueleconomy.gov](http://www.fueleconomy.gov).)

PRICING	<u>Code</u>	<u>Description</u>	<u>Manufacturer's Suggested Retail Price (MSRP)<sup>4</sup></u>
	9100	LS 430 Luxury Sedan	\$ 55,500
		<b>Options</b>	
	AT	Ashtray	No Charge
	CC	Front Climate-Control Seats	890
	CS	Intuitive Parking Assist	500
	IN	Interior Upgrade Package with Black or Bordeaux Semi Aniline Leather Trim, requires LP or UL	2,100
	IR	Interior Upgrade Package with Ecru Nappa Leather Trim, requires LP or UL	1,460
	LI	Mark Levinson® Audio System Package, includes Mark Levinson Premium Audio, Power Moonroof, and Heated Front and Rear Seats	3,220
	LP	Custom Luxury Selection, includes Mark Levinson Premium Audio, Navigation System, Power Moonroof, Dynamic Laser Cruise Control, Laminated Side Glass, Power Rear Sunshade, Intuitive Parking Assist, Heated Rear Seats, Front Climate-Control Seats, Headlamp Washers, and Power Door Closers, requires IN or IR	6,895
	ND	Navigation System Package, includes Navigation System, Power Moonroof, and Heated Front and Rear Seats	3,980
	NL	Navigation/Mark Levinson Package, includes Navigation System, Mark Levinson Premium Audio, Power Moonroof, Front Climate-Control Seats, Rear Seat Heaters, and Intuitive Parking Assist	5,730
	SP	Euro-Tuned Sport Suspension	No Charge
	SR	Power Moonroof	1,100
	TI	Chrome Wheels	1,700
	TR	Chrome Wheels with All-Season Tires	1,700
	TS	All-Season Tires	No Charge
	UL	Ultra Luxury Selection, includes Mark Levinson Premium Audio, Navigation System, Power Moonroof, Dynamic Laser Cruise Control, Adaptive Variable Air Suspension, Laminated Side Glass, Power Rear Sunshade and Manual Rear Door Sunshades, Intuitive Parking Assist, Power Heated Rear Seats with Memory and Massage Feature, Front Climate-Control Seats, Rear Air Conditioner and Air Filtration System, Headlamp Washers, and Power Door Closers, requires IN or IR	12,485

<sup>4</sup>The vehicle MSRP at launch included Delivery, Processing, and Handling fee. The Delivery, Processing, and Handling Fee was based on the value of the processing, handling and delivery services provided by Lexus and Lexus' overall pricing strategy. Federal, state, and local taxes, and advertising fees, if any, were additional. Prices included pre-delivery services. Suggested prices: These guidelines were provided by Lexus. The dealer was free to establish its own selling price, margin, or profit level.

**EXTERIOR COLORS**



**BLACK CHERRY PEARL  
3P2**  
Ecru or Black Leather  
Bordeaux or Black  
Luxury Aniline Leather  
Ecru Luxury Leather



**PARCHMENT CRYSTAL  
066**  
Ivory or Ecru Leather  
Ecru Luxury Leather



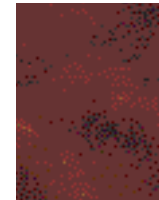
**BLUE ONYX PEARL  
8P8**  
Ecru or Light Charcoal Leather  
Black Luxury  
Aniline Leather  
Ecru Luxury Leather

**STANDARD LEATHER AND WOOD OPTIONS**



**GOLDEN BIRD'S-EYE MAPLE**

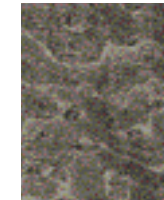
Ecru or Black Leather



**CALIFORNIA WALNUT**

Light Charcoal or  
Ivory Leather

**CUSTOM LUXURY / ULTRA LUXURY SELECTIONS**



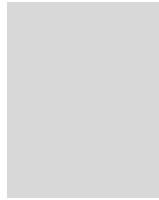
**ECRU BIRD'S-EYE MAPLE**

Ecru Luxury Leather



**BORDEAUX BIRD'S-EYE  
MAPLE**

Bordeaux or Black  
Luxury Aniline Leather



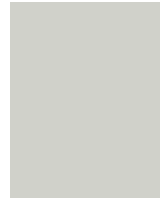
**MILLENNIUM SILVER METALLIC  
1C0**

Ecru, Light Charcoal or Black Leather  
Bordeaux or Black  
Luxury Aniline Leather  
Ecru Luxury Leather



**MIDNIGHT PINE PEARL  
6S6**

Ivory Leather  
Black Luxury  
Aniline Leather  
Ecru Luxury Leather



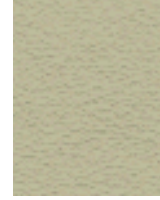
**PLATINUM BLUE PEARL  
8P7**

Ecru or Light Charcoal Leather  
Black Luxury  
Aniline Leather  
Ecru Luxury Leather



**MYSTIC GOLD METALLIC  
4P7**

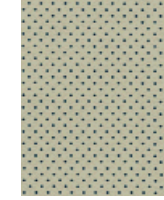
Ivory Leather  
Ecru Luxury Leather



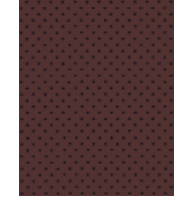
**ECRU LEATHER\***



**LIGHT CHARCOAL LEATHER\***



**ECRU LUXURY LEATHER  
with Perforated Inserts**



**BORDEAUX LUXURY  
ANILINE LEATHER  
with Perforated Inserts**



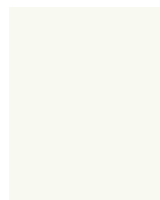
**MYSTIC SEA OPALESCENT  
6S5**

Ecru or Light Charcoal Leather  
Ecru Luxury Leather



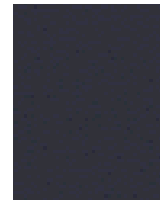
**BLACK ONYX  
202**

Ivory, Ecru or Black Leather  
Bordeaux or Black  
Luxury Aniline Leather  
Ecru Luxury Leather



**CRYSTAL WHITE  
062**

Ivory or Ecru Leather  
Bordeaux or Black  
Luxury Aniline Leather  
Ecru Luxury Leather



**BLACK LEATHER\***



**IVORY LEATHER\***



**BLACK LUXURY  
ANILINE LEATHER  
with Perforated Inserts**

\* Comes with perforated inserts when equipped with optional front climate-control seats.  
See your Lexus dealer for exact vehicle colors.