



XLE shown in Desert Sand Mica with accessory rear spoiler

You can now honestly tell your kids that life was harder when you were growing up.

- Available in four distinctive models
- Spaciousness — 148.9 cubic feet of cargo volume¹
- Versatility — with its 60/40 Split & Stow 3rd Row™ seat and available Front and Center™ second-row seat
- Functionality — with an available rear-seat DVD entertainment system



CE shown in Blue Mirage Metallic



LE shown in Natural White

05 MODEL GRADES

CE

- Available in 7- or 8-passenger models
- 60/40 Split & Stow 3rd Row™ seat
- Second-row indexing seat creates side-by-side seating from captain's chairs (7-passenger models)
- Available Front and Center™ second-row seat (8-passenger models)
- Second-row power window in each sliding door
- Tray table between front-row seats folds down to create walk-through space
- 4-wheel Anti-lock Brake System (ABS) with Electronic Brake-force Distribution (EBD) and Brake Assist²

1. Behind the first-row seat. Cargo and load capacity limited by weight and distribution.
2. See Specifications section footnote 2 for more information on Brake Assist.

- Tire Pressure Monitor System³
- 16-in. steel wheels with full wheel covers

LE

- Available in 7- or 8-passenger models
- Front passenger seat folds flat to carry long cargo
- Rear privacy glass with power rear quarter windows
- Driver's seat with manual adjustable lumbar support
- Available passenger-side power sliding door with "jam protection"
- Defroster-linked CFC-free front/rear air conditioning with separate rear control panel and air filter
- Available All-Wheel Drive (AWD)

3. See Model Grade Features section footnote 10 for more information on Toyota's Tire Pressure Monitor System.



XLE shown in Desert Sand Mica



XLE LIMITED shown in Silver Shadow Pearl

05 MODEL GRADES

XLE

- Available as a 7-passenger model only
- Available leather-trimmed seats
- Dual power sliding doors and rear door with “jam protection”
- JBL Synthesis AM/FM Cassette with single-disc in-dash CD player and ten speakers (the first minivan with surround sound)
- Three-zone automatic climate control with air and odor filter for driver, front passenger and rear-seat passengers
- Wood-grain-style interior trim
- Removable center console that may be installed between the front- or second-row seats
- Available manual second- and third-row sunshades
- 16-in. aluminum alloy wheels
- Available power/tilt slide moonroof with sunshade

XLE Limited

- Available as a 7-passenger model only
- Driver and front passenger heated leather-trimmed seats with adjustable temperature control
- Driver and front passenger seat-mounted side and three-row side curtain airbags¹
- JBL Synthesis AM/FM Cassette with 6-disc in-dash CD changer, ten speakers and two in-glass antennas with FM diversity reception
- Dynamic Laser Cruise Control²
- High Intensity Discharge (HID) headlamps
- Vehicle Stability Control (VSC)³ + Traction Control (TRAC) — includes rear disc brakes, windshield wiper de-icer grid and Daytime Running Lights (DRL) with auto on/off feature
- Front and rear Intuitive Parking Assist
- Power tilt/slide moonroof with sunshade

See Model Grade Features section for complete list of equipment.

1. The Toyota driver, front passenger, front seat-mounted side airbags and side curtain airbags are Supplemental Restraint Systems (SRS). The driver and front passenger airbags are designed to deploy in severe (usually frontal) collisions where the magnitude and duration of the forward deceleration of the vehicle exceed the design threshold level. The side airbags and side curtain airbags are designed to inflate in certain types of severe side-impact collisions. In all other accidents, the airbags will not inflate. To decrease the risk of injury from a deploying airbag, always wear seatbelts, sit upright in the middle of the seat as far back as possible from the airbag modules and do not lean against the door. Do not put objects in front of an airbag or around the seatback. Do not use rearward-facing child seats in any front passenger seat. The force of a deploying SRS airbag may cause serious injury or death. Please see your *Owner's Manual* for further instructions.

2. Dynamic Laser Cruise Control is designed to assist the driver and is not a substitute for safe and attentive driving practices. Please see your *Owner's Manual* for important cautions and instructions.

3. Toyota Vehicle Stability Control (VSC) is an electronic system designed to help the driver maintain vehicle control under adverse conditions. It is not a substitute for safe driving practices. Factors including speed, road conditions and driver steering input can all affect whether VSC will be effective in preventing a loss of control. Please see your *Owner's Manual* for further details.



XLE interior shown in Stone with available XLE Package #8

05 INTERIORS

Room for the kids and all their imaginary friends.

In addition to plenty of elbow room, Sienna's interior offers your passengers more amenities than ever, including:

- Heated leather-trimmed power driver's and front passenger seats with adjustable temperature control and driver's lumbar support (standard on XLE Limited, available on XLE)
- Removable center console that may be installed between the front- or second-row seats
- Standard power second-row windows
- Rear-seat audio system with remote control and wireless headphone capability
- Retractable manual second- and third-row side-window sunshades (standard on XLE Limited, available on XLE)
- 14 convenient cup/bottle holders
- HomeLink®¹ universal transceiver for one-touch garage door operation (standard on XLE and XLE Limited, available on LE)
- Available touch-screen DVD navigation system² helps you to your destination and has a backup camera³ for maneuvers in reverse
- Available rear-seat DVD entertainment system⁴ with two wireless headphones (includes two 115V power outlets)
- Three-zone automatic climate control keeps everyone comfortable
- JBL Synthesis AM/FM Cassette with single-disc in-dash CD player and ten speakers (standard on XLE only)
- Tray table between front-row seats contains five cup holders and folds down to create a walk-through space to the rear seats (Standard on CE and LE)
- Conversation mirror that allows parents to see children

1. HomeLink® is a registered trademark of Johnson Controls, Inc.

2. The Toyota DVD navigation system is designed to assist in locating an address or point of interest. Discrepancies may be encountered between the system and your actual location. Changes in street names, road closures, traffic flow or other road system changes may affect the accuracy of the mapping software. Rely upon your common sense to decide whether or not to follow a specified route. Detailed coverage not available in every city. Optional periodic geographical updates available at an additional cost. See your *Navigation System Owner's Manual* and your Toyota dealer for further details.

3. The backup camera, available only with the navigation system, does not provide a comprehensive view of the entire rear area of the vehicle. You should also look around outside your vehicle and use your mirrors to confirm rearward clearance.

4. Not available on CE.



XLE shown in Desert Sand Mica with Taupe interior and available XLE Package #8

7-PASSENGER CONFIGURATIONS Available on all model grades

Comes in various floor plans.

The versatility of 7-passenger Siennas helps you keep up with the many changes of family life. Features include:

- Second-row captain's chairs that move laterally to create side-by-side seating or cargo room down the side
- Split & Stow 3rd Row™ seat allows for a variety of cargo spaces or, with the second row removed, avails all of Sienna's 148.9 cu. ft. of cargo volume¹

1. Behind the first-row seat. Cargo and load capacity limited by weight and distribution.



The 8-passenger Sienna is a model of comfort with 14 cup/bottle holders, spacious seating for eight and ample cargo room behind the third row.



You'll appreciate the many options for carrying passengers and cargo in the 8-passenger Sienna, not to mention the convenience of the Front and Center™ second-row seat.



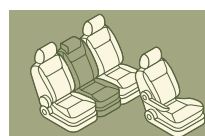
Remove the second row of seats, then stow the third row, and you'll create 148.9 cu. ft. of cargo space!¹ Fold the front passenger seat flat and gain even more.²

LE 8-passenger model shown in Natural White with Taupe interior

8-PASSENGER CONFIGURATION Available on CE and LE

The Front and Center™ second-row seat, available in 8-passenger Siennas, lets you move the center seat forward and bring the one you love closer.

1. Behind the first-row seat. Cargo and load capacity limited by weight and distribution.
2. Standard on LE only.



Second-row center seat
Position 1: Flush



Second-row center seat
Position 2: Forward

MODEL GRADE FEATURES



	CE	LE	XLE	XLE LIMITED		CE	LE	XLE	XLE LIMITED
Exterior									
Chrome accents on front grille, rear license plate garnish and body side moldings	—	—	—	\$	Power black outside mirrors	\$	—	—	—
Color-keyed bumpers, door handles and body side moldings	\$	\$	\$	\$	Power heated black outside mirrors	—	\$	—	—
Color-keyed rear license plate garnish	—	\$	\$	—	Color-keyed power heated outside mirrors	—	—	\$	\$
Aerodynamic multi-reflector headlamps with auto-off feature	\$	\$	—	—	Dual sliding doors with power windows	\$	\$	—	—
Auto on/off headlamps	—	—	\$	\$	Dual power sliding doors with power windows and power rear door	—	—	\$	\$
High Intensity Discharge (HID) headlamps with manual level control	—	—	—	\$	Passenger-side power sliding door	—	P	—	—
Fog lamps	—	—	\$	\$	High Solar Energy-Absorbing (HSEA) glass on windshield and driver and front passenger windows	—	\$	\$	\$
Power front disc/rear drum brakes	\$	\$	\$	—	Privacy glass	—	\$	\$	\$
Rear disc brakes	—	P ¹	P ¹	\$	Roof rack	P	\$	\$	\$
Foot pedal parking brake	\$	\$	\$	\$	Rear bumper protector	—	\$	\$	\$
16-in. steel wheels with full wheel cover with P215/65R16 tires	\$	\$	—	—	Remote keyless entry system with confirmation tone	\$	\$	\$	\$
16-in. 6-spoke aluminum alloy wheels with P215/65R16 tires	—	P	\$	—	Washer-linked variable intermittent front and intermittent rear wipers	\$	\$	\$	\$
17-in. 5-spoke aluminum alloy wheels with P225/60R17 tires	—	S ²	P ¹	\$	Heavy-duty rear window defogger with timer	\$	\$	\$	\$
Towing Prep Package ³ — 3500-lb. towing capability with heavy-duty radiator, heavy-duty fan, 150-amp alternator and power steering oil cooler	\$	\$	\$	\$	Power tilt/slide moonroof with sunshade	—	—	P	\$
Interior									
Wood-grain-style interior trim	—	—	\$	\$	Overhead console with conversation mirror	\$	\$	\$	\$
Chrome-trimmed door handles and driver and front passenger air vents	—	—	\$	\$	Dual illuminated visor vanity mirrors	—	\$	\$	\$
Chrome-accented transmission shift plate	\$	\$	\$	\$	Driver and front passenger sun visors with vanity mirror	\$	\$	\$	\$
Driver's seat with manual adjustable lumbar support	—	\$	\$	\$	Overhead console multi-information display with outside temperature, compass, current and average fuel consumption, fuel range and HomeLink [®] universal transceiver	—	P	\$	\$
Front passenger seatback with fold-flat function	—	\$	—	—	Door-mounted armrest storage compartment	\$	\$	\$	\$
6-way adjustable driver's and 4-way front passenger captain's chairs with armrest and height-adjustable headrests in all seating positions	\$	\$	—	—	Four map pockets	\$	\$	\$	\$
8-way power-adjustable driver's and 4-way front passenger captain's chairs with height-adjustable headrests	—	—	\$	\$	Cassette/CD compartment	\$	\$	\$	\$
8-way power-adjustable driver's and front passenger power multi-adjustable seat with height-adjustable headrests	—	—	\$	\$	Coin pocket and sunglasses holder	\$	\$	\$	—
Removable second-row modular seating with Front and Center™ middle-seat feature (8-passenger models only)	\$	S ⁴	—	—	Garage door opener storage bin	\$	\$	—	—
Removable second-row indexing seats with armrests (7-passenger models only)	\$	\$	\$	\$	Front passenger-seat under-seat storage bin	—	\$	—	—
60/40 Split & Stow 3rd Row™ seat	\$	\$	\$	\$	Folding tray table between front seats	\$	\$	—	—
Heated driver and front passenger seats with adjustable temperature control	—	—	P	\$	Removable center console with storage	—	—	\$	\$
Unique CE fabric-trimmed interior with black lacquer-style trim	\$	—	—	—	Upper glove box and lockable lower glove box	\$	\$	\$	\$
Unique LE fabric-trimmed interior with black lacquer-style trim	—	\$	—	—	Five assist grips and four coat hooks	\$	\$	\$	\$
Unique XLE fabric	—	—	\$	—	Ten cup holders ⁸	\$	\$	\$	\$
Leather-trimmed interior	—	—	P	\$	Four bottle holders	\$	\$	\$	\$
Dynamic Laser Cruise Control ⁵	—	—	—	\$	Three 12V power outlets	\$	\$	\$	\$
Cruise control	P	\$	\$	—	Automatic door locks	\$	\$	\$	\$
Leather-wrapped tilt and telescopic steering wheel with wood-grain-style trim and integrated audio controls	—	—	—	\$	Electric soft-touch rear door release	\$	\$	\$	\$
Leather-wrapped tilt and telescopic steering wheel with integrated audio controls	—	—	\$	—	Speedometer, tachometer, coolant temperature and fuel gauges with light blue illumination; LCD odometer and twin tripmeter	\$	\$	\$	\$
Tilt and telescopic steering wheel	\$	\$	—	—	Airbag, seatbelt, low-fuel level, door-ajar, battery, maintenance, check engine, oil pressure, brake and ABS warning lights	\$	\$	\$	\$
Power front and sliding door windows with retained-power feature and driver's auto up/down with "jam protection"	S ⁶	\$	\$	\$	Digital quartz clock	\$	\$	\$	\$
Rear privacy glass with power-operated rear quarter windows	—	\$	\$	\$	Three-zone automatic climate control with push-button controls, individual temperature settings with air and odor filter for driver, front passenger and rear-seat passengers	—	—	\$	\$
Day/night rearview mirror	\$	\$	\$	—	Defroster-linked CFC-free front/rear air conditioning with separate rear control panel and air filter	\$	\$	—	—
Auto-dimming electrochromic driver's power outside mirror and inside rearview mirror	—	—	—	\$	Manual second- and third-row window sunshades	—	—	P	\$

\$ = Standard — = Not Available
P = Feature available only as part of an option package.

(cont.)

1. Standard on AWD.
2. Standard on LE AWD, not available on LE 2WD.
3. Before towing, confirm your vehicle and trailer are compatible, hooked up properly and you have any necessary additional equipment. Do not exceed any Weight Ratings and follow all instructions and cautions from your trailer hitch manufacturer and Toyota vehicle Owner's Manual. The maximum amount you can tow depends on the total weight of any cargo, occupants and optional equipment.

4. 8-passenger seating is not available on LE AWD, XLE and XLE Limited.
5. Dynamic Laser Cruise Control is designed to assist the driver and is not a substitute for safe and attentive driving practices. Please see your Owner's Manual for important cautions and instructions.
6. "Jam protection" not available on CE.
7. HomeLink[®] is a registered trademark of Johnson Controls, Inc.
8. Thirteen cup holders with removable center console.

MODEL GRADE FEATURES

	CE	LE	XLE	XLE LIMITED		CE	LE	XLE	XLE LIMITED
Interior (continued)									
3-in-1 AM/FM Cassette with single-disc in-dash CD player, six speakers and mast antenna	S	S	—	—	Steering wheel-integrated audio controls	—	S	S	S
JBL Synthesis AM/FM Cassette with single-disc in-dash CD player, ten speakers and two in-glass antennas with FM diversity reception	—	P	S	—	Rear-seat audio system with remote control and wireless headphone capability	—	P	S	S
JBL Synthesis AM/FM Cassette with 6-disc in-dash CD changer, ten speakers and two in-glass antennas with FM diversity reception	—	—	P	S	Illuminated entry — includes front and rear personal lights located on all outboard seating positions, cargo area light and courtesy lights for front and sliding doors	S	S	S	S
JBL Synthesis AM/FM with CD player, touch-screen DVD navigation system ¹ with backup camera ² ; two in-glass antennas with FM diversity reception and ten speakers	—	—	P	P ³					
Safety and Convenience									
Driver and front passenger Advanced Airbag System ⁴	S	S	S	S	Vehicle Stability Control (VSC) ⁸ + Traction Control (TRAC) — includes rear disc brakes, windshield wiper de-icer grid and Daytime Running Lights (DRL) with auto on/off feature	—	P ⁹	P ⁹	S
Driver and front passenger seat-mounted side and three-row side curtain airbags ⁴	—	P	P	S	Tire Pressure Monitor System ¹⁰	S	S	S	S
3-point seatbelts in all seating positions, with adjustable seatbelt anchors on front- and second-row seats, driver's belt Emergency Locking Retractor (ELR); Automatic/Emergency Locking Retractors (ALR/ELR) on all other seats ⁵	S	S	S	S	Child-protector sliding door locks	S	S	S	S
Front seatbelt pretensioners with force limiters	S	S	S	S	"Jam protection" function with auto-reverse on power sliding doors and rear door	—	—	S	S
Driver and front passenger seatbelt warning system	S	S	S	S	"Jam protection" function with auto-reverse on available power sliding door	—	P	—	—
Collapsible steering column	S	S	S	S	Engine immobilizer	—	S	—	—
Reinforced steel unitized body with high-tensile-strength steel body panels	S	S	S	S	Anti-theft system with engine immobilizer	—	—	S	S
Front and rear crumple zones and side-impact beams for front and sliding doors	S	S	S	S	Battery-saver feature — deactivates personal lights after 30 minutes with lights on	S	S	S	S
Power-assisted ventilated front disc, rear drum brakes with 4-wheel Anti-lock Brake System (ABS) with Electronic Brake-force Distribution (EBD) and Brake Assist ⁶	S	S	S	S ⁷	Front and rear Intuitive Parking Assist	—	—	—	S

S = Standard — = Not Available
P = Feature available only as part of an option package.

- The Toyota DVD navigation system is designed to assist in locating an address or point of interest. Discrepancies may be encountered between the system and your actual location. Changes in street names, road closures, traffic flow or other road system changes may affect the accuracy of the mapping software. Rely upon your common sense to decide whether or not to follow a specified route. Detailed coverage not available in every city. Optional periodic geographic updates available at an additional cost. See your *Navigation System Owner's Manual* and your Toyota dealer for further details.
- The backup camera, available only with the navigation system, does not provide a comprehensive view of the entire rear area of the vehicle. You should also look around outside your vehicle and use your mirrors to confirm rearward clearance.
- When XLE Limited Package #2 is ordered, the standard 6-disc in-dash CD changer is replaced with a single-disc in-dash player.
- The Toyota driver, front passenger, front seat-mounted side airbags and side curtain airbags are Supplemental Restraint Systems (SRS). The driver and front passenger airbags are designed to deploy in severe (usually frontal) collisions where the magnitude and duration of the forward deceleration of the vehicle exceed the design threshold level. The side airbags and side curtain airbags are designed to inflate in certain types of severe side-impact collisions. In all other accidents, the airbags will not inflate. To decrease the risk of injury from a deploying airbag, always wear seatbelts, sit upright in the middle of the seat as far back as possible from the airbag modules and do not lean against the door. Do not put objects in front of an airbag or around the seatback. Do not use rearward-facing child seats in any front passenger seat. The force of a deploying SRS airbag may cause serious injury or death. Please see your *Owner's Manual* for further instructions.

- Adjustable seatbelt anchor on driver-side second-row seat (7-passenger models), and on second-row outboard seats (8-passenger models).
- Brake Assist is designed to help the driver take full advantage of the benefits of ABS. It is not a substitute for safe driving practices. Braking effectiveness also depends on proper brake-system maintenance and tire and road conditions.
- Rear disc brakes standard on XLE Limited.
- Toyota Vehicle Stability Control (VSC) is an electronic system designed to help the driver maintain vehicle control under adverse conditions. It is not a substitute for safe driving practices. Factors including speed, road conditions and driver steering input can all affect whether VSC will be effective in preventing a loss of control. Please see your *Owner's Manual* for further details.
- Standard on AWD.
- Toyota's Tire Pressure Monitor System alerts the driver when tire pressure is critically low. For optimal tire wear and performance, tire pressure should be checked regularly with a gauge; do not rely solely on the Monitor System. See your *Owner's Manual* for details.

SPECIFICATIONS

	CE	LE	XLE	XLE LIMITED
Mechanical/Performance				
Engine	3.3-liter DOHC 24-valve VVT-i V6 230 hp @ 5600 rpm 242 lb.-ft. @ 3600 rpm			
Ignition	Electronic, with Toyota Direct Ignition (TDI)			
Transmission	5-speed electronically controlled automatic overdrive with intelligence (ECT-i)			
Drivetrain	Front engine, front-wheel drive; All-Wheel Drive (AWD) available on LE, XLE and XLE Limited			
Body construction	Unitized body with anti-vibration sub-frame			
Suspension	MacPherson strut front suspension with gas-filled shock absorbers and torsion beam rear suspension with coil springs and gas-filled shock absorbers, and front and rear stabilizer bars			
Steering	Variable-assist power rack-and-pinion			
Turning circle diameter, curb to curb (ft.)	36.8			
Brakes	Power-assisted ventilated front disc, rear drum with Anti-lock Brake System (ABS); with 4-wheel disc brakes on XLE Limited, AWD models or with available Vehicle Stability Control (VSC) ¹ system and Brake Assist ²			
Exterior Dimensions (in.)				
Overall height, unloaded	68.9			
Overall width	77.4			
Overall length	200.0			
Wheelbase	119.3			
Tread width (front/rear) with available tires	65.6/66.9 65.9/67.3 ³			
Ground clearance	6.9			
Coefficient of drag (Cd)	0.30			
Interior Dimensions front/middle/rear (in.)				
Head room with moonroof	42.0/40.2/38.1 39.5/38.6/38.1			
Shoulder room	63.8/64.9/61.1			
Hip room	58.4/67.5/51.8			
Leg room	42.9/39.6/39.5			
Weights and Capacities				
Curb weight (lb.) (7-passenger/8-passenger/AWD)	4120/4175/NA	4120/4175/4310	4165/NA/4365	4165/NA/4365
Cargo volume (cu. ft.) ⁴ behind front/middle/rear seats	148.9/94.5/43.6			
Towing capacity ⁵ (lb.), maximum	3500			
Fuel tank (gal.)	20			
Tires				
Size AWD models	P215/65R16 NA	P215/65R16 P225/60R17	P215/65R16 P225/60R17	P225/60R17 P225/60R17
Type	All-Season steel-belted radial blackwall	All-Season steel-belted radial blackwall ⁶	All-Season steel-belted radial blackwall ⁶	All-Season steel-belted radial blackwall ⁶
Spare	Temporary	Temporary ⁷	Temporary ⁷	Temporary ⁷
Mileage Estimates (mpg city/highway) ⁸				
2WD	19/26			
AWD	18/24			

1. Toyota Vehicle Stability Control (VSC) is an electronic system designed to help the driver maintain vehicle control under adverse conditions. It is not a substitute for safe driving practices. Factors including speed, road conditions and driver steering input can all affect whether VSC will be effective in preventing a loss of control. Please see your *Owner's Manual* for further details.
2. Brake Assist is designed to help the driver take full advantage of the benefits of ABS. It is not a substitute for safe driving practices. Braking effectiveness also depends on proper brake-system maintenance and tire and road conditions.
3. Standard on AWD.
4. Cargo and load capacity limited by weight and distribution.
5. Before towing, confirm your vehicle and trailer are compatible, hooked up properly and you have any necessary additional equipment. Do not exceed any Weight Ratings and follow all instructions and cautions from your trailer hitch manufacturer and Toyota vehicle *Owner's Manual*. The maximum amount you can tow depends on the total weight of any cargo, occupants and optional equipment.

6. All-wheel drive models come equipped with run-flat tires. Run-flat tire technology is designed for limited emergency use only. If air pressure is lost, vehicle speed must remain below 55 miles per hour; cornering, braking and accelerating must be done with extreme caution; and the tire should be replaced within 100 miles. See your Toyota dealer for details.
7. Dealer-installed option on AWD models.
8. 2005 mileage estimates determined by Toyota. EPA mileage estimates not available at time of posting. Actual mileage may vary.

CE PACKAGES

CE Base Model¹ — standard base CE vehicle (no available options)**CE Package #1** — includes cruise control and roof rack

LE PACKAGES

LE Base Model¹ — standard base LE vehicle (no available options)**LE Package #1** — includes passenger-side power sliding door, HomeLink^{®2} universal transceiver, overhead multi-information display and rear-seat audio system**LE Package #2** — includes passenger-side power sliding door, HomeLink^{®2} universal transceiver, overhead multi-information display, rear-seat audio system and 8-way power-adjustable driver's seat*Excludes AWD models***LE Package #3** — includes passenger-side power sliding door, HomeLink^{®2} universal transceiver, overhead multi-information display, rear-seat audio system, and driver and front passenger seat-mounted side and three-row side curtain airbags³**LE Package #4** — includes passenger-side power sliding door, HomeLink^{®2} universal transceiver, overhead multi-information display, rear-seat audio system, 8-way power-adjustable driver's seat, and driver and front passenger seat-mounted side and three-row side curtain airbags³**LE Package #5** — includes passenger-side power sliding door, HomeLink^{®2} universal transceiver, overhead multi-information display, rear-seat audio system, driver and front passenger seat-mounted side and three-row side curtain airbags³ Vehicle Stability Control (VSC)⁴ + Traction Control (TRAC); rear disc brakes; windshield wiper de-icer grid, Daytime Running Lights (DRL) and 16-in. 6-spoke aluminum alloy wheels with P215/65R16 All-Season tires*Excludes AWD models***LE Package #6** — includes passenger-side power sliding door, HomeLink^{®2} universal transceiver, overhead multi-information display, rear-seat audio system, 8-way power-adjustable driver's seat, driver and front passenger seat-mounted side and three-row side curtain airbags³ Vehicle Stability Control (VSC)⁴ + Traction Control (TRAC); rear disc brakes; windshield wiper de-icer grid, Daytime Running Lights (DRL) and 16-in. 6-spoke aluminum alloy wheels with P215/65R16 All-Season tires*Excludes AWD models***LE Package #7** — includes passenger-side power sliding door, HomeLink^{®2} universal transceiver, overhead multi-information display, 8-way power-adjustable driver's seat, 16-in. 6-spoke aluminum alloy wheels with P215/65R16 All-Season tires, JBL Synthesis AM/FM Cassette with single-disc CD player; ten speakers and two in-glass antennas with FM diversity reception; and rear-seat DVD entertainment system with rear-seat audio, two wireless headphones and two 115V outlets*Excludes AWD models***LE Package #8** — includes passenger-side power sliding door, HomeLink^{®2} universal transceiver, overhead multi-information display, 8-way power-adjustable driver's seat, driver and front passenger seat-mounted side and three-row side curtain airbags³ Vehicle Stability Control (VSC)⁴ + Traction Control (TRAC); rear disc brakes; windshield wiper de-icer grid, Daytime Running Lights (DRL), 16-in. 6-spoke aluminum alloy wheels with P215/65R16 All-Season tires, JBL Synthesis AM/FM Cassette with single-disc CD player, ten speakers and two in-glass antennas with FM diversity reception; and rear-seat DVD entertainment system with rear-seat audio, two wireless headphones and two 115V outlets*Excludes AWD models***LE Package #9** — includes passenger-side power sliding door, HomeLink^{®2} universal transceiver, overhead multi-information display, driver and front passenger seat-mounted side and three-row side curtain airbags³ JBL Synthesis AM/FM Cassette with single-disc CD player, ten speakers and two in-glass antennas with FM diversity reception; and rear-seat DVD entertainment system with rear-seat audio, two wireless headphones and two 115V outlets*Excludes FWD models***LE Package #10** — includes passenger-side power sliding door, HomeLink^{®2} universal transceiver, overhead multi-information display, 8-way power-adjustable driver's seat, driver and front passenger seat-mounted side and three-row side curtain airbags³ JBL Synthesis AM/FM Cassette with single-disc CD player, ten speakers and two in-glass antennas with FM diversity reception; and rear-seat DVD entertainment system with rear-seat audio, two wireless headphones and two 115V outlets*Excludes FWD models*

XLE PACKAGES

XLE Base Model¹ — standard base XLE vehicle (no available options)**XLE Package #1** — includes driver and front passenger seat-mounted side and three-row side curtain airbags³*Excludes AWD models***XLE Package #2** — includes power tilt/slide moonroof with sunshade, JBL Synthesis AM/FM Cassette with 6-disc in-dash CD changer, ten speakers and two in-glass antennas with FM diversity reception*Excludes AWD models***XLE Package #3** — includes driver and front passenger seat-mounted side and three-row side curtain airbags³ Vehicle Stability Control (VSC)⁴ + Traction Control (TRAC); rear disc brakes; windshield wiper de-icer grid and Daytime Running Lights (DRL)*Excludes AWD models***XLE Package #4** — includes driver and front passenger seat-mounted side and three-row side curtain airbags³ Vehicle Stability Control (VSC)⁴ + Traction Control (TRAC); rear disc brakes; windshield wiper de-icer grid, Daytime Running Lights (DRL) and power tilt/slide moonroof with sunshade*Excludes AWD models***XLE Package #5** — includes leather-trimmed seats with manual second- and third-row window sunshades, heated driver and front passenger seats, 17-in. 5-spoke aluminum alloy wheels with P225/60R17 All-Season tires, driver and front passenger seat-mounted side and three-row side curtain airbags³ Vehicle Stability Control (VSC)⁴ + Traction Control (TRAC); rear disc brakes; windshield wiper de-icer grid and Daytime Running Lights (DRL), rear-seat DVD entertainment system, two wireless headphones, and two 115V outlets*Excludes AWD models***XLE Package #6** — includes leather-trimmed seats with manual second- and third-row window sunshades, heated driver and front passenger seats; 17-in. 5-spoke aluminum alloy wheels with P225/60R17 All-Season tires, driver and front passenger seat-mounted side and three-row side curtain airbags³ Vehicle Stability Control (VSC)⁴ + Traction Control (TRAC); rear disc brakes; windshield wiper de-icer grid, Daytime Running Lights (DRL), power tilt/slide moonroof with sunshade; and JBL Synthesis AM/FM Cassette with 6-disc in-dash CD changer, ten speakers and two in-glass antennas with FM diversity reception*Excludes AWD models***XLE Package #7** — includes leather-trimmed seats with manual second- and third-row window sunshades, heated driver and front passenger seats; 17-in. 5-spoke aluminum alloy wheels with P225/60R17 All-Season tires, driver and front passenger seat-mounted side and three-row side curtain airbags³ Vehicle Stability Control (VSC)⁴ + Traction Control (TRAC); rear disc brakes; windshield wiper de-icer grid, Daytime Running Lights (DRL), power tilt/slide moonroof with sunshade, JBL Synthesis AM/FM Cassette with 6-disc in-dash CD changer, ten speakers and two in-glass antennas with FM diversity reception; and rear-seat DVD entertainment system, two wireless headphones and two 115V outlets*Excludes AWD models*

(cont.)

1. For a full list of standard features, see Model Grade Features section.

2. HomeLink[®] is a registered trademark of Johnson Controls, Inc.

3. The Toyota driver, front passenger, front seat-mounted side airbags and side curtain airbags are Supplemental Restraint Systems (SRS). The driver and front passenger airbags are designed to deploy in severe (usually frontal) collisions where the magnitude and duration of the forward deceleration of the vehicle exceed the design threshold level. The side airbags and side curtain airbags are designed to inflate in certain types of

severe side-impact collisions. In all other accidents, the airbags will not inflate. To decrease the risk of injury from a deploying airbag, always wear seatbelts, sit upright in the middle of the seat as far back as possible from the airbag modules and do not lean against the door. Do not put objects in front of an airbag or around the seatback. Do not use rearward-facing child seats in any front passenger seat. The force of a deploying SRS airbag may cause serious injury or death. Please see your *Owner's Manual* for further instructions.

4. See Specifications section footnote 1 for more information on Toyota's Vehicle Stability Control (VSC).

XLE PACKAGES (continued)

XLE Package #8 — includes leather-trimmed seats with manual second- and third-row window sunshades, heated driver and front passenger seats; 17-in. 5-spoke aluminum alloy wheels with P225/60R17 All-Season tires, driver and front passenger seat-mounted side with three-row side curtain airbags;³ Vehicle Stability Control (VSC)⁴ + Traction Control (TRAC), rear disc brakes, windshield wiper de-icer grid, Daytime Running Lights (DRL), power tilt/slide moonroof with sunshade, JBL Synthesis AM/FM with CD player, ten speakers and two in-glass antennas with FM diversity reception; and rear-seat DVD entertainment system, two wireless headphones, two 115V outlets and touch-screen DVD navigation system⁵ with backup camera⁶

Excludes AWD models

XLE Package #9 — includes leather-trimmed seats with manual second- and third-row window sunshades, heated driver and front passenger seats, and driver and front passenger seat-mounted side and three-row side curtain airbags³

Excludes FWD models

XLE Package #10 — includes leather-trimmed seats with manual second- and third-row window sunshades, heated driver and front passenger seats; driver and front passenger seat-mounted side and three-row side curtain airbags;³ JBL Synthesis AM/FM Cassette with 6-disc in-dash CD changer, ten speakers and two in-glass antennas with FM diversity reception; and rear-seat DVD entertainment system and two wireless headphones and two 115V outlets

Excludes FWD models

XLE Package #11 — includes leather-trimmed seats with manual second- and third-row window sunshades, heated driver and front passenger seats, driver and front passenger seat-mounted side and three-row side curtain airbags;³ JBL Synthesis AM/FM 6-disc in-dash CD changer, ten speakers and two in-glass antennas with FM diversity reception; and rear-seat DVD entertainment system, two wireless headphones, two 115V outlets and power tilt/slide moonroof with sunshade

Excludes FWD models

XLE Package #12 — includes leather-trimmed seats with manual second- and third-row window sunshades, heated driver and front passenger seats, driver and front passenger seat-mounted side and three-row side curtain airbags;³ JBL Synthesis AM/FM with CD player, ten speakers and two in-glass antennas with FM diversity reception; rear-seat DVD entertainment system, two wireless headphones, two 115V outlets and power tilt/slide moonroof with sunshade and touch-screen DVD navigation system⁵ with backup camera⁶

Excludes FWD models

XLE LIMITED PACKAGES

XLE Limited Base Model¹ — standard base XLE Limited vehicle (no available options)

XLE Limited Package #1 — includes rear-seat DVD entertainment system, two wireless headphones and two 115V outlets

XLE Limited Package #2⁷ — includes JBL Synthesis AM/FM with CD player, ten speakers and two in-glass antennas with FM diversity reception; rear-seat DVD entertainment system; two wireless headphones, two 115V outlets and touch-screen DVD navigation system⁵ with backup camera⁶

Please remember, Toyota vehicles are built with popular option combinations. Not all options are available separately, and some options and accessories may not be available in all regions of the country. So please contact your Toyota dealer, who can help locate the vehicle that's right for you.

WARRANTIES

Every Toyota Car, Truck and SUV is built to exceptional standards. And that's not idle boasting. We back it up with these Limited Warranty Coverages:

Basic: 36 months/36,000 miles (all components other than normal wear and maintenance items).

Powertrain: 60 months/60,000 miles (engine, transmission/transaxle, front-wheel drive, rear-wheel drive, seatbelts and airbags).

Rust-Through: 60 months/unlimited miles (corrosion perforation of sheet metal).

Emissions: Coverages vary under Federal and California regulations. Refer to applicable *Owner's Warranty Information* booklet for details.

Accessories: Accessories installed at the time of the new vehicle purchase are covered for 36 months/36,000 miles from the vehicle's in-service date, whichever occurs first, under the New Vehicle Limited Warranty.

Accessories installed by the dealer after the new vehicle purchase are covered for 12 months, regardless of mileage, from the accessory installation date, or the remainder of the New Vehicle Limited Warranty, whichever provides greater coverage.

Accessories purchased over the counter are covered for 12 months from the date of purchase. Car covers are warranted for 12 months from the purchase date and are not covered by the New Vehicle Limited Warranty.

TOYOTA FINANCIAL SERVICES*

Now that you're thinking about a Toyota, you may also want to consider leasing or financing the purchase of your new vehicle through your participating dealer and Toyota Financial Services (TFS). TFS offers a variety of high-quality finance and lease products to complement your lifestyle. At TFS we realize that purchasing or leasing a vehicle is a major commitment and we have developed some of the finest customer-focused finance and insurance solutions to help protect your interests over time. And in most cases, you may include your cost for these products in your finance or lease contract.

Few companies can match the expertise, customer care and total value of TFS. Ask your Toyota dealer or go to www.toyotafinancial.com for details.

*Toyota Financial Services is a service mark of Toyota Motor Credit Corporation and Toyota Motor Insurance Services, Inc. Products are available to qualified customers through your participating Toyota dealer and Toyota Financial Services.

1. For a full list of standard features, see Model Grade Features section.

2. HomeLink® is a registered trademark of Johnson Controls, Inc.

3. The Toyota driver, front passenger, front seat-mounted side airbags and side curtain airbags are Supplemental Restraint Systems (SRS). The driver and front passenger airbags are designed to deploy in severe (usually frontal) collisions where the magnitude and duration of the forward deceleration of the vehicle exceed the design threshold level. The side airbags and side curtain airbags are designed to inflate in certain types of severe side-impact collisions. In all other accidents, the airbags will not inflate. To decrease the risk of injury from a deploying airbag, always wear seatbelts, sit upright in the middle of the seat as far back as possible from the airbag modules and do not lean against the door. Do not put objects in front of an airbag or around the seatback. Do not use rearward-facing child seats in any front passenger seat. The force of a deploying SRS airbag may cause serious injury or death. Please see your *Owner's Manual* for further instructions.

4. See Specifications section footnote 1 for more information on Toyota's Vehicle Stability Control (VSC).

5. The Toyota touch-screen DVD navigation system is designed to assist in locating an address or point of interest. Discrepancies may be encountered between the system and your actual location. Changes in street names, road closures, traffic flow or other road system changes may affect the accuracy of the mapping software. Rely upon your common sense to decide whether or not to follow a specified route. Detailed coverage not available in every city. Optional periodic geographical updates available at an additional cost. See your *Navigation System Owner's Manual* and your Toyota dealer for further details.

6. The backup camera, available only with the navigation system, does not provide a comprehensive view of the entire rear area of the vehicle. You should also look around outside your vehicle and use your mirrors to confirm rearward clearance.

7. When XLE Limited Package #2 is ordered, the standard 6-disc in-dash CD changer is replaced with a single-disc in-dash player.

COMBINATIONS



CE

LE

XLE

XLE LIMITED



Model Seating Configuration MSRP Starting At:¹

CE 7-Passenger \$23,425
CE 8-Passenger \$23,575

LE 7-Passenger \$24,930
LE 8-Passenger \$25,080
LE AWD 7-Passenger \$28,545

XLE 7-Passenger \$29,225
XLE AWD 7-Passenger \$32,430

XLE Limited 7-Passenger \$35,495
XLE Limited AWD 7-Passenger \$37,695



CE standard 16-in. wheel cover



LE standard 16-in. wheel cover
LE available 16-in. aluminum alloy wheel
LE All-Wheel Drive (AWD) standard 17-in. aluminum alloy wheel



XLE standard 16-in. aluminum alloy wheel
XLE available 17-in. aluminum alloy wheel [standard on XLE All-Wheel Drive (AWD)]



XLE Limited and XLE Limited All-Wheel Drive (AWD) standard 17-in. aluminum alloy wheel

1. 2005 Manufacturer's Suggested Retail Price, excludes the Delivery, Processing and Handling Fee of \$540 for Cars and \$565 for Trucks, Vans and SUVs. (Historically, vehicle manufacturers and distributors have charged a separate fee for processing, handling and delivering vehicles to dealerships. Toyota's charge for these services is called the "Delivery, Processing and Handling Fee" and is based on the value of the processing, handling and delivery services Toyota provides as well as Toyota's overall pricing structure. Toyota may make a profit on the Delivery, Processing and Handling Fee.) Excludes taxes, license, title and available or regionally required equipment. The Delivery, Processing and Handling Fee in AL, FL, GA, NC and SC is \$35 higher for Trucks, Sienna, and SUVs, and \$50 higher for all other Toyota vehicles. The Delivery, Processing and Handling Fee in AR, LA, MS, OK and TX is \$35 higher for all Toyota vehicles. Actual dealer price may vary. Pricing, specifications, standard features and available equipment are based on information available when this page was produced and are subject to change without notice.

FABRIC/LEATHER

COLOR



CE fabric in Taupe or Stone (shown)



LE fabric in Stone or Taupe (shown)

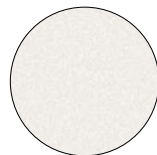


XLE fabric in Taupe or Stone (shown)

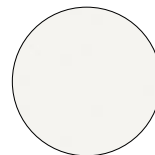


Leather Trim² in Taupe or Stone (shown)

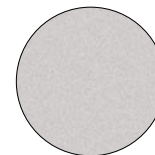
2. Available on XLE, standard on XLE Limited.
3. Extra cost color. Not available on CE and LE.
4. Not available on XLE and XLE Limited.



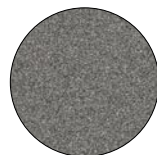
Arctic Frost Pearl³ with Stone or Taupe interior



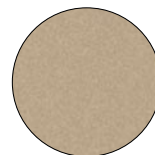
Natural White⁴ with Stone or Taupe interior



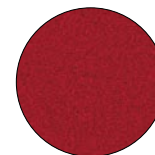
Silver Shadow Pearl with Stone interior



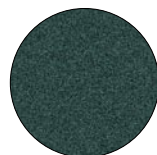
Phantom Gray Pearl with Stone or Taupe interior



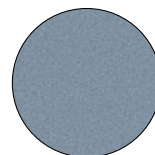
Desert Sand Mica with Taupe interior



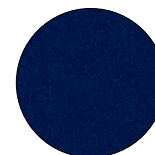
Salsa Red Pearl with Stone or Taupe interior



Aspen Green Pearl with Stone or Taupe interior



Blue Mirage Metallic with Stone or Taupe interior



Stratosphere Mica with Stone interior

Some vehicles are shown with available equipment. Seatbelts should be worn at all times. For details on vehicle specifications, standard features and available equipment in your area, contact your Toyota dealer. A vehicle with particular equipment may not be available at the dealership. Ask your Toyota dealer to help locate a specifically equipped vehicle.

All information presented herein is based on data available at the time of posting, is subject to change without notice and pertains specifically to mainland U.S.A. vehicles only (may differ in the state of Hawaii, Puerto Rico, the U.S. Virgin Islands and in other regions).



For Toyota Mobility program details, go to www.toyota.com/mobility or call the Toyota Customer Assistance Center at 1-800-331-4331.

1-800-GO-TOYOTA
toyota.com

©2004 Toyota Motor Sales, U.S.A., Inc.
KZ5-027

treadlightly![®]
LEAVING A GOOD IMPRESSION



A



B



C



D



E



F



G

05 ACCESSORIES

Here's where you make sure it has everything you need and everything kids want.

A Carpeted Floor Mats

Color-coordinated floor mats protect your original carpeting while adding some flair with an embroidered Sienna logo. The non-skid backing and positive retention clip help prevent them from sliding.

B Running Boards

Custom-fit running boards add an unbeatable combination of functionality and stylish good looks.

C Emergency Assistance Kit

Drive with confidence in knowing that you are secure with your Emergency Assistance Kit. This basic emergency assistance kit contains jumper cables, multi-tool, flashlight, emergency blanket, duct tape, bungee cord, survival whistle, hose clamp and more...

D Dual Port Hitch System™

Carry More — Squeeze Less. The all-new Dual Port Hitch System, designed specifically for your Sienna, features convenient attachments (cargo carrier, bike rack, cargo tray and swing away) that allow you to carry the cargo on the outside so you can ride in comfort on the inside.

E DPS — Cargo Tray

F DPS — Bike Attachment¹

G DPS — Cargo Carrier¹

1. Requires cargo tray.



H



I



J



K



L



M

05 ACCESSORIES

H Bright Silver 16-in. 5-Spoke Aluminum Alloy Wheels
Add some flair to your vehicle with sporty and stylish alloy wheels. Manufactured to meet Toyota's strict engineering specifications.

I Wheel Locks
Wheels can make the vehicle. Keep your wheels where you need them — on your car.

J Cargo Net
Don't you hate it when your stuff rolls around while you're driving? The Cargo Net is your answer. It's easy to install and even easier to use.

K Cargo Tote
This handy cargo tote helps keep your car organized.

L VIP Security System Upgrade
This advanced, multi-featured security system protects against theft by activating when your vehicle's glass is broken or when a door is forcibly opened. Your insurance deductible may be reimbursed if your vehicle is stolen. Specific terms and conditions apply. Please consult VIP Consumer Limited Warranty Card or call TMS Commercial Insurance at (888) 238-8125.

M First Aid Kit
This handy First Aid Kit puts supplies where they are needed, when they are needed. The kit contains sterile medical dressings, anti-bacterial ointment and an assortment of other supplies.



N



O



P



Q

05 ACCESSORIES

N Hood Protector

Help keep your vehicle's windshield and hood free from debris with this aerodynamically designed Hood Protector.

O Wireless Headphones

Wireless Headphones allow for private listening for rear-seat passengers, personal volume control to adjust sound level, adjustable head-phone band for optimal fit and comfort, auto on/off integrated circuit for extended battery life with two AAA batteries being included.

P Auto-Dimming Mirror

Improve your driving safety with an Auto-Dimming Mirror. Its built-in sensors detect headlight glare and automatically dim the mirror to reduce eyestrain.

Q Doorsill Protector

Protect your vehicle's interior against everyday scuffs and scrapes while providing a slip-resistant surface.

Accessories not shown:

- All-Weather Floor Mats
- Ashtray Kit
- Front-End Mask
- Mudguards
- Towing Accessories
- Sunroof Wind Deflector
- Glass Breakage Sensor (GBS)

See your dealer for complete warranty details. Toyota reserves the right to make modifications to actual products.