

2007 LEXUS **RX Hybrid**



 LEXUS

## 2007 LEXUS **RX Hybrid** The World's First Luxury Hybrid



The groundbreaking RX 400h has captured the attention and curiosity of drivers all over the world. This revolutionary new hybrid system combines gas and electricity, making the RX 400h a phenomenal blend of performance and fuel efficiency. Drivers will have the benefits of a hybrid without sacrificing luxury, versatility or safety. With its sleek styling and rugged stance, this hybrid looks everything like a Lexus. Perhaps now the true definition of luxury also includes fewer stops at the gas station.

## 2007 LEXUS **RX Hybrid** Hybrid Technology

The innovative technology behind the Lexus hybrid system utilizes a combination of gas and electricity. At slow speeds it's powered by electricity.\* When accelerating, the gas engine engages, allowing both power sources to work together. At higher speeds, the gas engine is primarily used with the electric motor(s) providing assistance when needed. But don't worry, this seamless integration isn't something you have to pay attention to. It's all managed by intelligent electronic control systems. The complementary nature of the hybrid system also leads to significantly reduced emissions. Not surprisingly, the RX 400h has been given a Super Ultra-Low Emission Vehicle (SULEV) rating. And lastly, you will never have to plug in the RX 400h. Every time you apply the brakes, and during coasting, kinetic energy is captured and the battery is recharged. This eliminates the need for any external charging. With this cutting-edge technology, we are indeed one step closer to perfection.



\* Engine may activate to provide additional power depending on factors such as battery charge level and ambient temperature.

## 2007 LEXUS **RX Hybrid** Performance



You might not expect a hybrid to have the power of a performance sedan, but through innovative technology, the 268-horsepower<sup>1</sup> hybrid system pumps out the acceleration of a V8. The ingenious RX 400h is also one of the first Lexus vehicles to offer intuitive Vehicle Dynamics Integrated Management (VDIM).<sup>2</sup> While cornering in the onset of a skid situation, this feature helps the driver keep the vehicle in control by adjusting the speed, throttle, braking and steering of the vehicle. With the adaptive front headlamps, you'll meet every curve in full light as the low-beam headlamps pivot in accordance with your vehicle's speed and the direction you are turning. This innovative thinking makes the RX 400h the discerning driver's hybrid.

<sup>1,2</sup>See page 14 for more information.



## 2007 LEXUS **RX Hybrid** Interior Luxury

The RX 400h is first and foremost a Lexus, providing the ultimate in luxury amenities. The impressive list begins with such features as the electroluminescent meter instrumentation, available rich leather interior trim, rear seat 40/20/40 split, available moonroof, sliding center console and power rear door. Decadence is exemplified in the 10-way adjustable driver's and front passenger's seats (including lumbar) for your additional comfort.



## 2007 LEXUS **RX Hybrid** Rear Backup Camera & DVD Navigation System



Another ingenious feature on the 2007 RX 400h is the available backup camera.<sup>3</sup> The tiny camera lens sits virtually unnoticed just above the rear license plate and allows the driver to actually “see backward.” When the RX 400h is put into Reverse, the video camera conveniently displays its full-color image on the available in-dash, LCD NAV<sup>4</sup> screen. The driver is then better prepared to maneuver: a terrific resource while parallel parking or backing up near objects such as valet stands, luggage or those obligatory hotel courtyard fountains.

Whether you’re in the city or beyond, a little guidance can be enormously helpful. And that’s precisely why the RX 400h comes available with the brilliant Lexus voice-activated DVD Navigation System<sup>4</sup> with Bluetooth® technology.<sup>5</sup> It maps information for most of the contiguous U.S. and major Canadian cities, so not only does it spare you from asking for directions, it can also suggest restaurants by cuisine and easily guide you to points of interest.

<sup>3,4,5</sup> See page 14 for more information.

## 2007 LEXUS **RX Hybrid** Audio & Rear-Seat Entertainment System



The spacious cabin of the 2007 RX 400h offers amenities that could rival a concert or film premiere. Movie lovers of all ages will enjoy the available Lexus DVD Rear-Seat Entertainment System (RSES). As for music aficionados and high-end audiophiles, they'll love the bold sound of the available Mark Levinson® Premium Audio System<sup>6</sup>—and the 11 speakers that accompany it. All highly persuasive reasons to spend as much time in the RX 400h as possible.

<sup>6</sup>See page 14 for more information.



## 2007 LEXUS **RX Hybrid** Airbag System



The RX 400h's sophisticated network of sensors and airbags<sup>7</sup> is designed to help enhance passenger protection should a collision occur. Depending on factors such as crash severity and driver's seat-track position, the advanced driver's dual-stage airbag<sup>7</sup> deploys at a higher or lower speed to help provide an appropriate level of occupant restraint. Similarly, the advanced front passenger's dual-stage airbag<sup>7</sup> uses occupant sensors to determine if a deployment is appropriate, and crash severity sensors to determine whether to deploy the airbag at higher or lower speeds. The 2007 RX 400h also features front seat-mounted side airbags<sup>7</sup> that are larger than conventional side airbags<sup>7</sup> and designed to help protect the torso, abdomen and pelvis. And rounding out this comprehensive system are front and rear side curtain airbags<sup>7</sup> with rollover sensors and a driver's knee airbag.<sup>7</sup> Of course, as impressive as it is, the RX 400h's airbag system<sup>7</sup> is one feature we hope is never needed.

<sup>7</sup>See page 14 for more information.



## 2007 LEXUS **RX Hybrid** Ownership Experience



And now your journey is ready to begin. The Lexus ownership experience is a magnificent journey within itself. Measured not in mileage, but in moments. Flashes in time that delight you, inspire you. That in whatever small way, enrich your life. You'll feel it in the peace of mind you get from our well-earned reputation for unparalleled vehicle quality and dependability. You'll feel it in the pride of knowing that Lexus puts a high priority on the wise use of natural resources as shown in the certification of every vehicle we build. And you'll feel it in our award-winning customer service, where every dealership goes to great lengths to accommodate you. This journey of Lexus ownership is the reason our owners are some of the most satisfied drivers on the road today. And why so many of them continue to return again and again. Because we understand that whether your travels take you to vineyards for a weekend or simply around the block for errands, the miles of road left behind you will be a distant memory. But the moments along the way will last a lifetime.

### CUSTOMER SATISFACTION

Your total and complete satisfaction is our highest priority. Which is why you may find our dealerships provide such amenities as offices you can use for business, free pickup and delivery, service loaner vehicles, complimentary car washes, concierge service and even 24-hour emergency Roadside Assistance\* for your first four years of ownership.

### RESPONSIBLE THINKING

As part of an effort to reduce emissions whenever possible, every Lexus vehicle built since 2004 has been certified as either a Low-Emission Vehicle (LEV), Ultra-Low Emission Vehicle (ULEV) or (ULEV II), or Super Ultra-Low Emission Vehicle (SULEV).

### VALUE/DEPENDABILITY/QUALITY

Our commitment to build the finest vehicles in the world has not wavered since our inception. Seen in such ways as projected low repair costs and high retained value, our pursuit of perfection has never been stronger.

\*Coverage only available in the continental U.S. and Canada. Please see your Lexus dealer for details.



## 2007 LEXUS **RX Hybrid** Options & Accessories

### Premium Package

Leather-trimmed interior ■ Power tilt-and-telescopic steering column ■ Lexus Memory System to control power driver's seat (except lumbar), outside mirrors and steering wheel ■ Illuminated entry system ■ Power tilt-and-slide moonroof with one-touch open/close and sliding sunshade ■ Roof rack with rails<sup>8</sup>

### Premium Plus Package

Leather-trimmed interior ■ Power tilt-and-telescopic steering column ■ Lexus Memory System to control power driver's seat (except lumbar), outside mirrors and steering wheel ■ Illuminated entry system ■ Power tilt-and-slide moonroof with one-touch open/close and sliding sunshade ■ Roof rack with rails<sup>8</sup> ■ High-Intensity Discharge (HID) headlamps with dynamic auto leveling ■ Adaptive Front Lighting System (AFS)



### Navigation System/Mark Levinson® Package

Lexus voice-activated DVD Navigation System<sup>4</sup> with backup camera<sup>3</sup> and Bluetooth® technology<sup>5</sup> ■ Mark Levinson 11-speaker 210-watt @ 0.1% THD<sup>9</sup> Premium Audio System<sup>6</sup> with in-dash, single-feed, six-disc DVD/CD auto-changer featuring DVD-audio and DVD-video playback

### Individual Factory Options

Lexus DVD Rear-Seat Entertainment System (RSES) ■ Lexus voice-activated DVD Navigation System<sup>4</sup> with backup camera<sup>3</sup> and Bluetooth® technology<sup>5</sup> ■ Mark Levinson 11-speaker 210-watt @ 0.1% THD<sup>9</sup> Premium Audio System<sup>6</sup> with in-dash, single-feed, six-disc DVD/CD auto-changer ■ Dynamic Laser Cruise Control<sup>10</sup> ■ Wood interior trim ■ Heated front seats, rain-sensing intermittent windshield wipers with mist cycle and headlamp washers ■ High-Intensity Discharge (HID) headlamps with Adaptive Front Lighting System (AFS) ■ 18 x 7.0-in alloy wheels with 235/55VR18 all-season tires ■ Towing Prep Package<sup>11</sup>

### Accessories

All-weather floor mats ■ Ashtray kit ■ Car cover ■ Cargo mat ■ Cargo net ■ Cargo tray ■ Front-end mask ■ Leather care kit ■ Mudguards ■ Roof rack systems<sup>8</sup> ■ Touch-up paint ■ Tow-hitch receiver<sup>11</sup> ■ Towing equipment ■ Wheel locks ■ Window sticker - Lexus Hybrid Drive ■ Wireless headphones<sup>12</sup>

## 2007 LEXUS **RX Hybrid** Specifications

### ENGINE

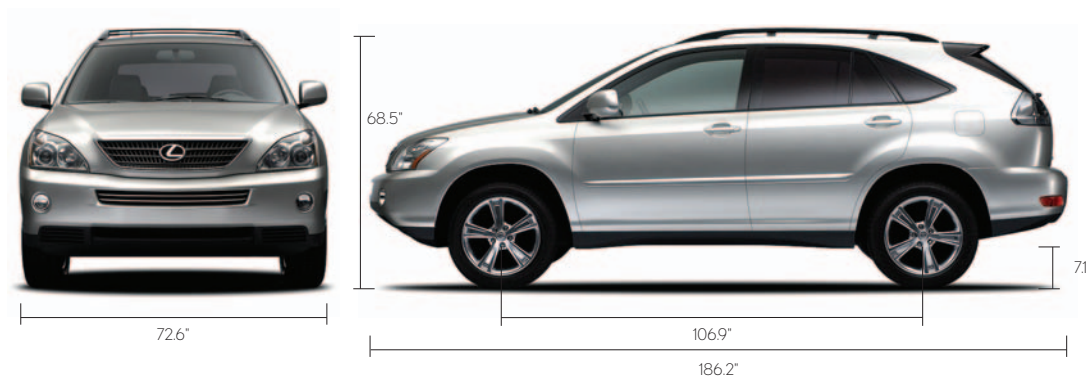
Type	60° V6, aluminum block and heads, certified Super Ultra-Low Emission Vehicle (SULEV)
Displacement	3.3 liters (202 cubic inches)
Valvetrain	Four cam, four valves per cylinder, with continuously Variable Valve Timing with intelligence (VVT-i)
Electric-Drive Motors	Front (FWD) or front and rear (AWD) high output, permanent magnet electric motors
Total System Horsepower	268 hp <sup>1</sup>

### DRIVETRAIN

Type	Front-wheel drive (FWD) or part-time all-wheel drive (AWD) <sup>13</sup>
Transmission	Electronically controlled Continuously Variable Transmission (ECVT)

### BODY, DIMENSIONS

Type	Five-passenger luxury utility vehicle
Construction	Welded-steel unibody
Overall Length	187.2 in (4,755 mm)
Width	72.6 in (1,845 mm)
Height	66.1 in (1,735 mm) (unloaded) (FWD)/ 66.4 in (1,740 mm) (unloaded) (AWD)
Wheelbase	106.9 in (2,715 mm)
Ground Clearance	6.90 in (175 mm) (FWD)/ 7.1 in (180 mm) (AWD)
Approach Angle	28.5° (FWD)/28.3° (AWD)
Departure Angle	23.5° (FWD)/24.3° (AWD)
Cargo Capacity (max)	38.3 cubic feet* (rear seats forward) 84.7 cubic feet* (rear seats folded)
Curb Weight	4,190 lb (1,901 kg) (FWD)/ 4,365 lb (1,981 kg) (AWD)
Tow Capacity (max)	3,500 lb <sup>11</sup> (1,588 kg)
Fuel-Tank Capacity	17.2 gallons (65 L)
Headroom	39.4/37.5 in (front/rear)
Legroom	42.5/36.4 in (front/rear)
Shoulder Room	57.9/57.1 in (front/rear)



\*Cargo and load capacity limited by weight and distribution.  
<sup>1, 11, 13</sup> See page 14 for more information.





## 2007 LEXUS **RX Hybrid** Specifications (Continued)

### CHASSIS

Vehicle Dynamics Integrated Management (VDIM) <sup>2</sup>	Traction management system designed to proactively but seamlessly integrate vehicle dynamic functions to help enhance driver control and vehicle performance under a variety of adverse conditions. VDIM manages the integration of Electronic Controlled Braking (ECB), Electronic Power Steering (EPS), Vehicle Stability Control (VSC), <sup>2</sup> Traction Control (TRAC), Anti-lock Braking System (ABS), Electronic Brakeforce Distribution (EBD) and Brake Assist. <sup>14</sup>
Suspension	Front: Independent, MacPherson struts with coil springs, gas-pressurized shock absorbers and stabilizer bar Rear: Independent struts with coil springs, gas-pressurized shock absorbers and stabilizer bar
Steering	Electronic engine-speed-sensing, progressive power-assisted rack-and-pinion. Electrictronic Power Steering (EPS)
Brakes	Four-wheel electronic power-assisted discs, with four-sensor, four-channel Anti-lock Braking System (ABS), Brake Assist <sup>14</sup> Electronic Brakeforce Distribution (EBD) and integrated regenerative brake system.
Wheels and Tires	17 x 6.5-in alloy wheels with 225/65R17 mud- and snow -rated tires. (Full-size spare with alloy wheel.) Available 18 x 7.0-in alloy wheels with 235/55VR18 all-season tires.

### PERFORMANCE

0-60 MPH Acceleration	7.5 seconds (FWD) <sup>1,16</sup> 6.9 seconds (AWD) <sup>1,17</sup>
Top Track Speed (electronically limited)	112 mph <sup>1,17</sup>
Fuel Consumption (EPA estimated city/highway)	32/27 mpg (FWD) <sup>18</sup> 31/27 mpg (AWD) <sup>18</sup>
Aerodynamic Drag Coefficient	0.35
Turning Circle	37.4 ft

### LUXURY

Brushed-aluminum interior trim • Leather-trimmed interior\* • Leather-trimmed steering wheel and shift knob<sup>19</sup> • Steering-wheel-mounted audio and display controls • Cruise control • Power tilt-and-telescopic steering column with automatic tilt away\* • Available Lexus voice-activated DVD Navigation System<sup>4</sup> with backup camera<sup>3</sup> and Bluetooth<sup>®</sup> technology<sup>5</sup> • Lexus eight-speaker Premium Sound System with in-dash, single-feed, six-disc CD auto-changer • Mark Levinson<sup>®</sup> 11-speaker 210-watt @ 0.1% THD<sup>9</sup> Premium Audio System\*<sup>6</sup> with in-dash, single-feed, six-disc DVD/CD auto-changer • Lexus DVD Rear-Seat Entertainment System (RSES)\* • Roof-mounted antenna with in-glass FM-diversity system • 10-way driver's and front passenger's (including lumbar) power seats • Heated front seats\* • Height-adjustable headrests for all seats • Lexus Memory System for power driver's seat (except lumbar), outside mirrors and steering wheel\* • Reclining, sliding rear seat (40/20/40 split) • Dual-zone automatic climate control with interior air filter and automatic recirculation mode • Power tilt-and-slide moonroof with one-touch open/close and sliding sunshade • Power windows with one-touch auto open/close feature • Remote-linked moonroof and window opening • Retained accessory power for moonroof and windows • Electrochromic (auto-dimming) inside mirror with compass and outside mirrors • Power door locks with driver's two-turn unlock feature • Power rear door • Multifunction, in-key remote entry system with rolling-code technology • Sliding center console with cupholders and storage bin • HomeLink<sup>®</sup> universal transceiver to operate compatible garage, gate, home lighting and home security systems • Accessory power outlet in cargo area • Towing Prep Package\*<sup>11</sup> • Illuminated entry system\* • Electroluminescent instrumentation • Interior electronic fuel-filler door release • Lexus Personalized Settings (LPS)<sup>20</sup> to personalize electronic functions • Roof rack with rails\*<sup>8</sup> • Automatic on/off headlamps with 30-second auto-off delay • Dual illuminated visor vanity mirrors • Outside temperature gauge • Sun visor extensions

### SAFETY AND SECURITY

Driver's and front passenger's advanced airbag system (SRS)<sup>7</sup> • Front seat-mounted side airbags (SRS)<sup>7</sup> • Front and rear Roll-Sensing Curtain Airbags (RSCA) (SRS)<sup>7</sup> • Driver's knee airbag (SRS)<sup>7</sup> • Three-point seatbelts for all seating positions, pre-tensioners with force limiters for front seats • Automatic Locking Retractor/Emergency Locking Retractor (ALR/ELR) seatbelts for all passenger seating positions • Emergency Locking Retractor (ELR) seatbelt for driver's seat • Height-adjustable front shoulder belt anchors • Child Restraint Seat (CRS) tether anchor brackets for rear outboard seating positions • Four-wheel power-assisted disc brakes • Four-sensor, four channel Anti-lock Braking System (ABS) • Vehicle Dynamics Integrated Management (VDIM)<sup>2</sup> • Traction Control (TRAC) • Brake Assist<sup>14</sup> • Electronic Brakeforce Distribution (EBD) • Lexus four-sensor Tire Pressure Monitor System<sup>15</sup> • Highly rigid body structure with front and rear crumple zones • Side-impact door beams • Impact-dissipating upper interior trim • Collapsible steering column • Collapsible brake and driver's footrest pedals • High-Intensity Discharge (HID) headlamps with dynamic auto leveling\* • Adaptive Front Lighting System (AFS)\* • Headlamp washers\* • Daytime running lights • Integrated foglamps • LED taillamps • Water-repellent front-door glass • Rain-sensing intermittent windshield wipers with mist cycle\* • Rear intermittent wiper • Rear-window defogger with auto-off timer • Power-adjustable outside mirrors with defoggers • Vehicle theft deterrent and engine immobilizer system, with in-key transponder • Auto-retracting tonneau cover • First aid kit • Tool kit

\*Optional

1, 2, 3, 4, 5, 6, 7, 8, 11, 14, 15, 16, 17, 18, 19, 20 See page 14 for more information.



# 2007 LEXUS **RX Hybrid** Colors

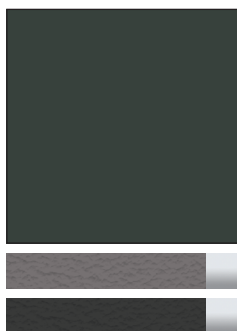
## EXTERIOR COLORS

BLACK ONYX



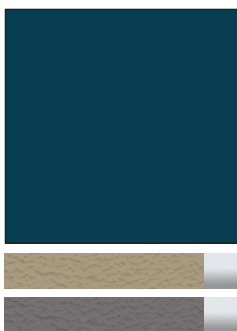
Ivory, Light Gray  
or Black Leather

FLINT MICA



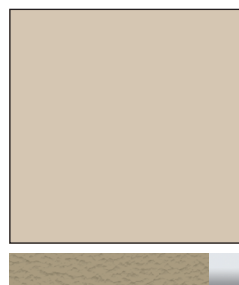
Light Gray or Black Leather

NEPTUNE BLUE MICA



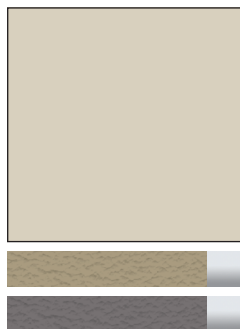
Ivory or Light Gray Leather

SAVANNAH METALLIC



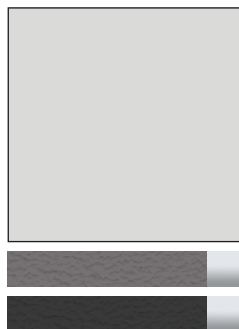
Ivory Leather

BAMBOO PEARL



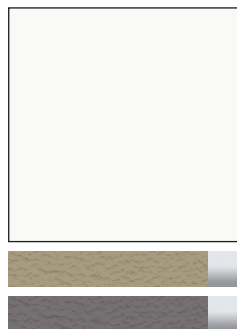
Ivory or Light Gray Leather

MILLENNIUM SILVER METALLIC



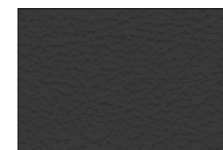
Light Gray or Black Leather

CRYSTAL WHITE

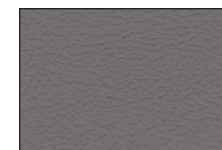


Ivory or Light Gray Leather

## INTERIOR COLORS



Black Leather

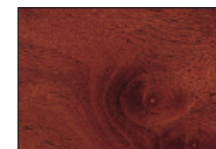


Light Gray Leather

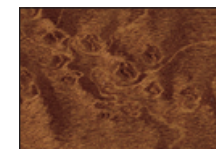


Ivory Leather

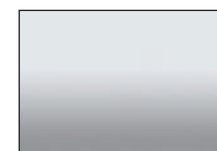
## TRIM



Walnut



Golden Bird's-Eye Maple



Brushed Aluminum

See your Lexus dealer for exact vehicle colors.



# 2007 LEXUS **RX Hybrid** Warranty

## WARRANTY

Eight-year/100,000-mile Powertrain Warranty on Hybrid control module, battery control module, Hybrid vehicle battery pack and inverter with converter. Eight-year/100,000 mile Hybrid Vehicle System Warranty. All warranties with zero deductible. See the RX 400h *Warranty and Services Guide* at your Lexus dealer for details.

## FOOTNOTES & DISCLAIMERS

**1.** Ratings achieved using the required premium unleaded gasoline with an octane rating of 91 or higher. If premium fuel is not used, performance will decrease. **2.** Vehicle Dynamics Integrated Management (VDIM) is an electronic system which integrates braking, steering, Vehicle Stability control (VSC) and Traction Control (TRAC) systems, and is designed to help the driver maintain control when there is a loss of traction in a turn. It is not a substitute for safe driving practices. Factors including speed, road conditions and driver steering input can all affect whether VDIM will be effective in preventing a loss of control. Please see your *Owner's Manual* for further details. **3.** The backup camera does not provide a comprehensive view of the rear area of the vehicle. You should also look around outside your vehicle and use your mirrors to confirm rearward clearance. Cold weather will limit effectiveness and view may become cloudy. **4.** The Navigation System is designed to assist in locating an address or point of interest. Discrepancies may be encountered between the system and your actual location. Road system changes may affect the accuracy of the information provided. Rely on your common sense to decide whether to follow a specified route. Detailed coverage not available in every city or roadway. Periodic updates available at an additional cost. See your *Navigation System Owner's Manual* for further details. **5.** The Bluetooth® technology phones listed on [lexus.com](http://lexus.com) have been tested for compatibility with Lexus vehicles. Performance will vary based on phone software version, coverage and your wireless carrier. Phones are warranted by their manufacturer, not Lexus. **6.** Mark Levinson is a registered trademark of Harman International Industries, Inc. **7.** All the vehicle's airbag systems are Supplemental Restraint Systems (SRS). The driver and front passenger airbags and driver's knee airbag are designed to inflate in severe (usually frontal) collisions where the magnitude and duration of the forward deceleration of the vehicle exceed the design threshold level. The side and side curtain airbags are designed to inflate in certain types of severe side-impact collisions. The side curtain airbags are Roll-Sensing Curtain Airbags (RSCA) and are designed to inflate at a severe tilt degree, roll or lateral G-force. In all other accidents, the airbags will not inflate. To decrease the risk of injury from an inflating airbag, always wear seatbelts, sit upright in the middle of the seat as far back as possible from the airbag modules, and do not lean against the door. Do not put objects in front of an airbag or around the seatback. Do not use a rearward-facing child seat in any front passenger seat. The force of a deploying airbag SRS may cause serious injury or death. Please see your *Owner's Manual* for further instructions. Vehicle complies with "advanced airbag" requirements of FMVSS 208. **8.** Accessory roof rack with rails not recommended for luggage. **9.** Continuous average power, all channels driven, at 0.1% THD; 20-20,000 Hz. **10.** Dynamic Radar Cruise Control was designed to assist the driver and is not a substitute for safe and attentive driving practices. Please see your *Owner's Manual* for important cautions and instructions. **11.** Before towing, confirm your vehicle and trailer are compatible, hooked up and loaded properly and you have any necessary additional equipment. Do not exceed any weight ratings and follow all instructions in your *Owner's Manual*. The maximum amount you can tow depends on the total weight of any cargo, occupants and available equipment. **12.** Headphones are for passenger use only. Do not use while operating vehicle. **13.** The RX 400h is not designed to be driven off-road. **14.** Brake Assist is designed to help the driver take full advantage of the benefits of ABS. It is not a substitute for safe driving practices. Braking effectiveness also depends on proper brake-system maintenance and tire and road conditions. **15.** The Lexus Tire Pressure Monitor System alerts the driver when tire pressure is critically low. For optimal tire wear and performance, tire pressure should be checked regularly with a gauge; do not rely solely on the monitor system. See your *Owner's Manual* for further details. **16.** Performance figures are for comparison only and were obtained with prototype vehicles by professional drivers using special safety equipment and procedures. Do not attempt. **17.** AMCI-Certified testing. **18.** 2007 EPA-estimated mpg. Actual mileage may vary. **19.** Interior available with walnut or golden bird's-eye maple wood trim. **20.** The Lexus Personalized Settings (LPS) Program is a one-time, complimentary offer for new 2005 model year vehicles and newer purchased or leased from 10/1/04 and beyond, up to 12 months from the date the vehicle is sold to the first retail purchaser or the date it is first used as a demonstrator, lease or company car, whichever occurs first. Please see your Lexus dealer for more information.

Specifications, features, equipment, technical data, performance figures, options, and color and trim are based upon information available at time of posting, are subject to change without notice, are for mainland U.S.A. vehicles and may differ in the state of Hawaii, Puerto Rico, the U.S. Virgin Islands and in other regions.

Some vehicles shown with optional equipment. Optional equipment listed may not be available separately or in all regions. See your Lexus dealer for details. Lexus reminds you to wear seatbelts, secure children in rear seat, obey all traffic laws and drive responsibly.

**For more information, call 800-USA-LEXUS (872-5398). To learn more about your financing options, contact your Lexus dealer or call Lexus Financial Services at 800-874-7050.**

All photographs appearing in this e-brochure are the copyrighted property of the photographers contracted by or on behalf of Lexus and may not be reproduced in any way whatsoever without prior written permission from both Lexus and the applicable photographer(s) or their authorized agent(s).

© 2006 Lexus, a Division of Toyota Motor Sales, U.S.A., Inc. All information contained herein applies to U.S. vehicles only.

