

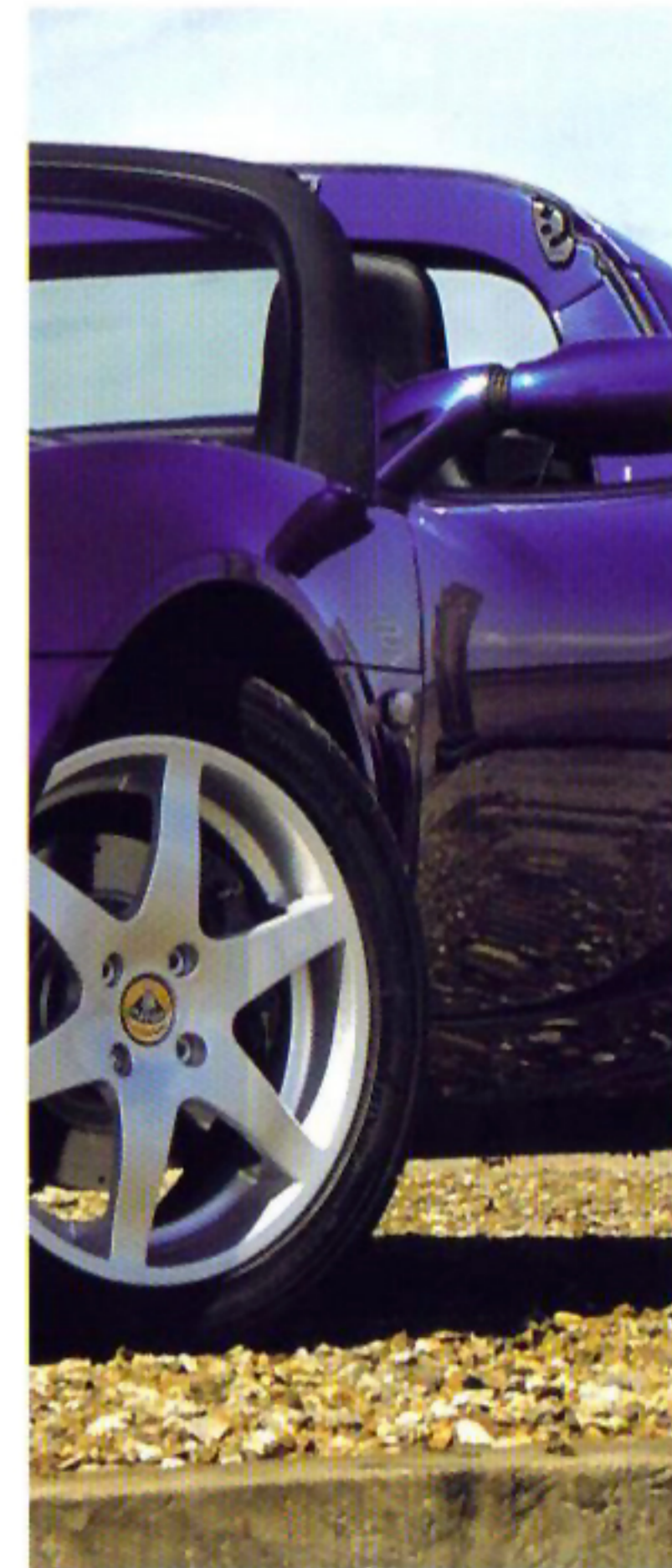
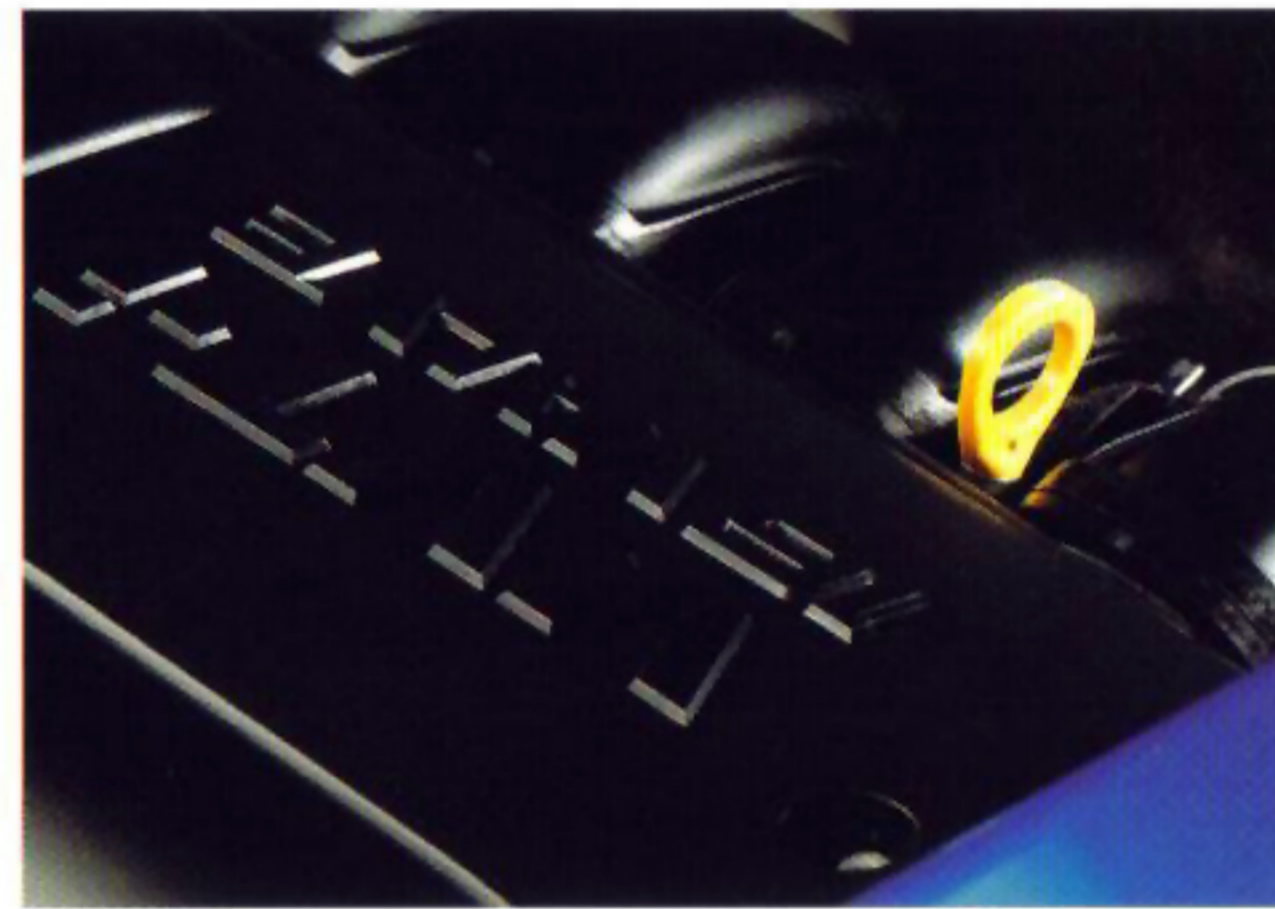


Elise S

Driving any Elise is an experience like no other – and the Elise S is no different.

Few cars can match the delicacy and accuracy of the steering, throttle and brakes. Only a Lotus has the relatively soft springs and firm damping to give superb body control and a truly exhilarating ride.

And only a Lotus can turn in such performance with such minimal environmental impact in terms of emissions and fuel consumption.



Powertrain Specification		Fit
Mid-mounted, transverse, 1794 cm ³ , 1ZZ-FE engine, aluminium lightweight and compact construction, 4 cylinders in line, water cooled, naturally aspirated with double overhead camshafts, rocker arms with low friction followers, 4 valves per cylinder, multi-point sequential fuel injection and electronic ignition.	S	
C56 5-speed gearbox	S	
Lotus Traction Control System (TCS)	O	

Performance	
0-60 mph	5.8 seconds
0-100 km/h	6.1 seconds
0-100 mph (0-160 km/h)	17.4 seconds
Max Speed	127 mph (205 km/h)
Max Power	134 hp (100 KW) (136 PS) at 6200 rpm
Max Torque	127 lbft (164 Nm) at 4200 rpm
Combined Fuel consumption	34.0 mpg (8.3 l/100 km)
CO ₂ emissions	196 g/km
Unladen vehicle mass	860 kg

Vehicle Specification	
Dual passenger and driver airbags	S
Cross-drilled brake discs	S
ABS with servo assisted brakes	S
6-spoke cast alloy wheels in Hi-power silver	S
Yokohama AD07 LTS tyres	S

Exterior Specification	
Solid Paint	S
Metallic Paint	O
Lifestyle Paint	O
Premium Paint	O
Custom Paint	POA
3-piece rear diffuser with anodised finish (Silver)	S
Clear sill stone chip protection film	S

Interior Specification		Fit
Senosoft 'soft touch' charcoal black paint finish dashboard		S
Engine starter button		S
Lightweight aluminium passenger foot-rest		S
Cloth ProBax seats (Black)		S
Cloth door inserts (Black)		S
Central door locking		S
Polished aluminium window winders		S
Plain leather sun-visors (Black)		S
Lightweight aluminium foot-well divider		S
Plain/perforated leather steering wheel (Black)		S
Perforated leather gear-lever gaiter (Black)		S
Polished aluminium gear-knob and handbrake sleeve		S
Radio and Single CD player with 4 speakers		S
Immobiliser and remote activated alarm		S

Other cost options		
Hard Top		O
Air Conditioning		O
Lotus Traction Control System (TCS)		O

Upgrade Packs - please see brochure inserts for full details		
Touring Pack*		O
Sport Pack*		O

Key: S = STANDARD - O = OPTION - POA = PRICE ON APPLICATION	
NOTES	
Lotus reserves the right to change vehicle specification and price at any time.	
* = Some options may be standard in certain markets.	
Please check with your local Lotus dealer for details.	

S
E
S
I
E
E

