



Mercedes-Benz

**Genuine Accessories** for the E-Class Coupe & Convertible

APPEARANCE

04

- *Light-Alloy Wheels*
- *Exterior Appearance*
- *Interior Appearance*

ENTERTAINMENT  
& COMMUNICATION

10

- *Navigation Map Update*
- *Media Integration*

UTILITY & CARE

14

- *Carrier Systems*
- *Cargo Management*
- *Child Safety Seats*
- *Car Care*
- *Car Utility*



Front Apron Spoiler Trim | p. 06

Side Sill Panels | p. 06

18" 2-Tone Wheel | p. 05



■ Ski & Snowboard Rack, Standard | p. 15

■ Roof Rack Basic Carrier | p. 14

■ Roof Spoiler | p. 07

Rear Spoiler | p. 07 ■

■ Chrome Door Handle Inserts | p. 08

■ Diffuser-look Rear Apron Trim | p. 07

Genuine  
Mercedes-Benz  
Accessories

# E-CLASS COUPE & CONVERTIBLE



### 17" 5-Twin-Spoke Wheel

Finish: titanium silver, high sheen

Wheel Size: 7.5 J x 17 ET 45 | Tire Size: 235/45 R17

Option for rear axle:

Wheel Size: 8.5 J x 17 ET 49 | Tire Size: 255/40 R17

Accessory wheels are only for specified tire sizes and may require use of wheel bolts other than those originally supplied with your vehicle. Failure to use proper equipment could result in an accident or vehicle damage.

See your authorized Mercedes-Benz dealer for details and installation.

Not compatible with snow chains. Serious wheel and tire damage may occur if the vehicle is operated on rough or damaged road surfaces or upon encountering road debris or obstacles.



### 18" 5-Twin-Spoke Wheel

Finish: titanium silver, high sheen

Wheel Size: 8 J x 18 ET 45

Tire Size: 235/40 R18

Option for rear axle:

Wheel Size: 8.5 J x 18 ET 49

Tire Size: 255/35 R18

### 18" 2-Tone 5-Spoke Wheel

Finish: black, high-sheen

Wheel Size: 8 J x 18 ET 45

Tire Size: 235/40 R18

Option for rear axle:

Wheel Size: 8.5 J x 18 ET 49

Tire Size: 255/35 R18 XL



*Light-Alloy Wheels*

### Wheel Hub Inserts

Add an attractive finishing touch to your wheels with these inserts. Various styles available:

- A** | Sterling silver with chrome Three-Pointed Star
  - B** | Classic Star & Laurel design in blue
  - C** | Classic Star & Laurel design in black
  - D** | Black with chrome Three Pointed Star
- Titanium silver with chrome Three-Pointed Star | not shown |



### Tire Valve Stem Caps

A perfect finishing touch, these chrome plated valve-stem caps dress-up any wheel. Each a set of four. Available in black, silver or AMG designs.

### Wheel Locks

Wheel locks can provide a subtle yet effective security touch to your E-Class, helping to protect your light-alloy wheels and tires from theft. One set secures four wheels. Includes coded key.



APPEARANCE



**A | Side Sill Panels\***

The distinctive design of the side sill panels nicely compliments the finish of your E-Class | 6-piece set |

**B | Chrome Trim for Front Apron\***

Brilliant detail high-shine surrounds for your E-Class vehicle's daytime running lights. | 2-piece set |

**C | Front Apron Spoiler Trim\***

This front apron spoiler trim will lower the body line of your E-Class Luxury for a more aggressive and sporty look. It drastically emphasizes the characteristic sweep of the front end of the E-Class. Highly durable and precision-fitted, primed for painting.

*\*For E350 vehicles, it is only available without AMG Styling Package*

**D | Roof Spoiler**

Extends the roofline of your E-Class enhancing its sporty appearance by giving the rear window a more compact, coupe-style look. Tailor-made of high-quality material for quick installation and a perfect fit. Comes primed, ready for painting. | Only available for E-Class Coupe |

**E | Rear Spoiler**

Add this rear spoiler for a more athletic look for your E-Class, and watch as it subtly accentuates the trunk lines of your vehicle. Tailor-made of high-quality material for quick installation and a perfect fit. Comes primed, ready for painting.

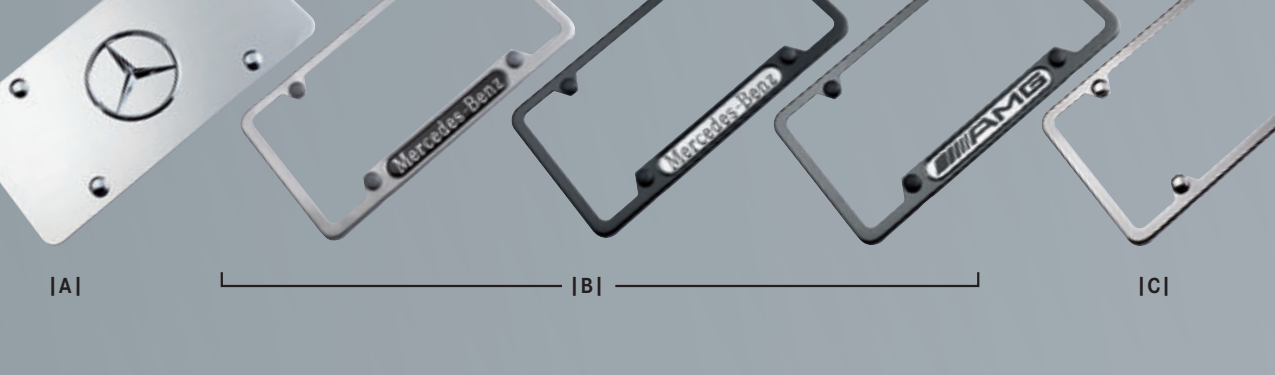
**F | Diffuser-look Rear Apron Trim\***

The distinctive design of the front apron spoiler lips is echoed here at the rear, creating a deeper, broader look for the rear of the vehicle.

*Exterior Appearance*



APPEARANCE



### License Plate Frames

Choose from several quality stainless steel designs in an assortment of durable finishes to enhance the appearance of your license plates without blocking registration tags. Design styles include: Mercedes-Benz frame, Slimline frame, AMG Logo frame, and Star Marque solid plate. Please see INDEX for finish options for each design.

From the left to the right:

- A | Marque Plate** with star logo
- B | Nameplate Frames** Mercedes-Benz (Polished, Black Powder Coat) and AMG (Carbon Fiber)
- C | Slimline Frame** (Black Pearl)

### Chrome Door Handle Inserts

Help protect your finish from scratches and add a touch of style with a set of two chrome door handle inserts.

### Trunk Handle

Made of stainless steel in polished or satin finish, this handle attaches to the license plate and trunk lid to help prevent fingerprints and reduce the possibility of scratching the finish on your E-Class. It perfectly complements our wide assortment of genuine License Plate Frames. Also available with elegantly laser-etched Mercedes-Benz name.



### Illuminated Door Sills

Light-up your E-Class in eye-catching style each time you open the front door with luminous white-colored “Mercedes-Benz” stainless steel door sills.



*Exterior Appearance*  
*Interior Appearance*

Mercedes-Benz

APPEARANCE

# MERCEDES-BENZ NAVIGATION MAP UPDATE

*More than a Map.™*

## Navigation Map Update

The Mercedes-Benz COMAND Navigation System<sup>1</sup> is a fully integrated system that combines Global Positioning System (GPS) technology with electronic mapping software to help you to plan trips, navigate detours and avoid getting lost. Global Positioning System (GPS) satellites continuously track your vehicle's location and the system relies on mapping information in order to give you the most accurate and efficient routes.

Notice however, how quickly the surroundings change: roads are added or diverted, restaurants open and close, hotels and hospitals are built, ATMs move. In fact, as much as 20 percent of the navigation data the system relies on changes every year. That is why Mercedes-Benz offers reliable, and updated navigation data to help get you where you need to go effortlessly. The Navigation Map Updates are available for purchase from your authorized Mercedes-Benz dealer.

The system can route you through more than 6.1 million miles of navigable roads in the United States and Canada. Just enter the address on the intelligent destination input screen, and the system takes over, guiding you audibly and with a clear and detailed 7" LCD map display. Do you need an idea where to go? The Navigation System also offers 1.7 million Points of Interest in 40 categories including ATMs, restaurants, hotels, airports, museums and more.

<sup>1</sup> Navigation system data includes the United States, Canada, Puerto Rico, Hawaii and Virgin Islands. Directional assistance provided only when GPS coverage is available. Maps do not cover all areas nor all routes within an area. While the navigation system provides directional assistance, the driver must remain focused on safe driving behavior, including paying attention to traffic and street signs. The driver should utilize the system's audio cues while driving and should only consult the map or verbal displays once the vehicle has been stopped in a safe place. See your authorized Mercedes-Benz dealer for availability and details.





# ENTERTAINMENT & COMMUNICATION



## MEDIA INTEGRATION

*Your music. Your Mercedes-Benz.*

Taking your personal music collection with you wherever you go has never been easier. Mercedes-Benz now offers seamless integration of your iPod®/iPhone®<sup>2</sup> into the audio system of your E-Class. With an interface that is compatible with any dock-connector-equipped iPod/iPhone device, your iPod/iPhone charges while connected<sup>2</sup>. Steering wheel controls and a visual display of the track information make your iPod/iPhone a perfect fit with your Mercedes-Benz.

### Mercedes-Benz iPod Integration Kit<sup>6</sup>

The Mercedes-Benz iPod Integration Kit puts the control at your finger-tips while playing your favorite music directly from your iPod or iPhone<sup>2</sup>. As with the Media Interface, the iPod integration connector is located in the glove compartment, and is compatible with most iPod models.<sup>6</sup>

*Comfortably control your iPod by using your steering wheel buttons:*

- A | *Navigate within the iPod music menu*
- B | *Access the Main Menu and control the volume*
- C | *View the artist and title information displayed in the vehicle's instrument cluster*



### Media Interface

The Media Interface<sup>3</sup> allows you to connect your audio devices to the interface located in the vehicle's glovebox. The Media Interface comes standard with two cables, an iPod connector [ 1 ] and a universal AUX input connector<sup>4</sup>. A non iPod USB cable [ 2 ] is available at your Mercedes Benz dealer, which will connect select<sup>5</sup> USB sticks or media players with a USB port.

The audio output can be selected and controlled through the existing audio system in your vehicle. The current status of your audio device will also be displayed in the vehicle instrument cluster allowing you to keep your attention on the road.



[ 1 ]

Media Integration



[ 2 ]

[ 1 ]

[ 2 ]

### PCMCIA Multi-Card Reader<sup>7</sup>

Listen comfortably to your music with the PCMCIA-Adapter of your COMAND system. The Plug & Play system in the COMAND immediately recognizes your PCMCIA Multi-Card Reader. A Memory Card (sold separately) is required to utilize the PCMCIA Multi-Card Reader. MP3-, WMA-, and ACC-Files are supported.

### SD Memory Card<sup>8</sup>

The COMAND APS in your E-Class features a slot for SD memory cards. Use the SD memory card as a convenient way to play music. Available with COMAND only.



<sup>2</sup> iPod and iPhone are registered products of Apple Computer. All iPod and iPhone devices are sold separately. iPod Integration Kit also charges iPod/iPhone devices which support USB charging only (e.g. iPhone 3G).

<sup>3</sup> Factory option.

<sup>4</sup> Control of devices connected via AUX is limited to volume control.

<sup>5</sup> For a list of compatible devices, please visit <http://www.mbusa-mobile.com>

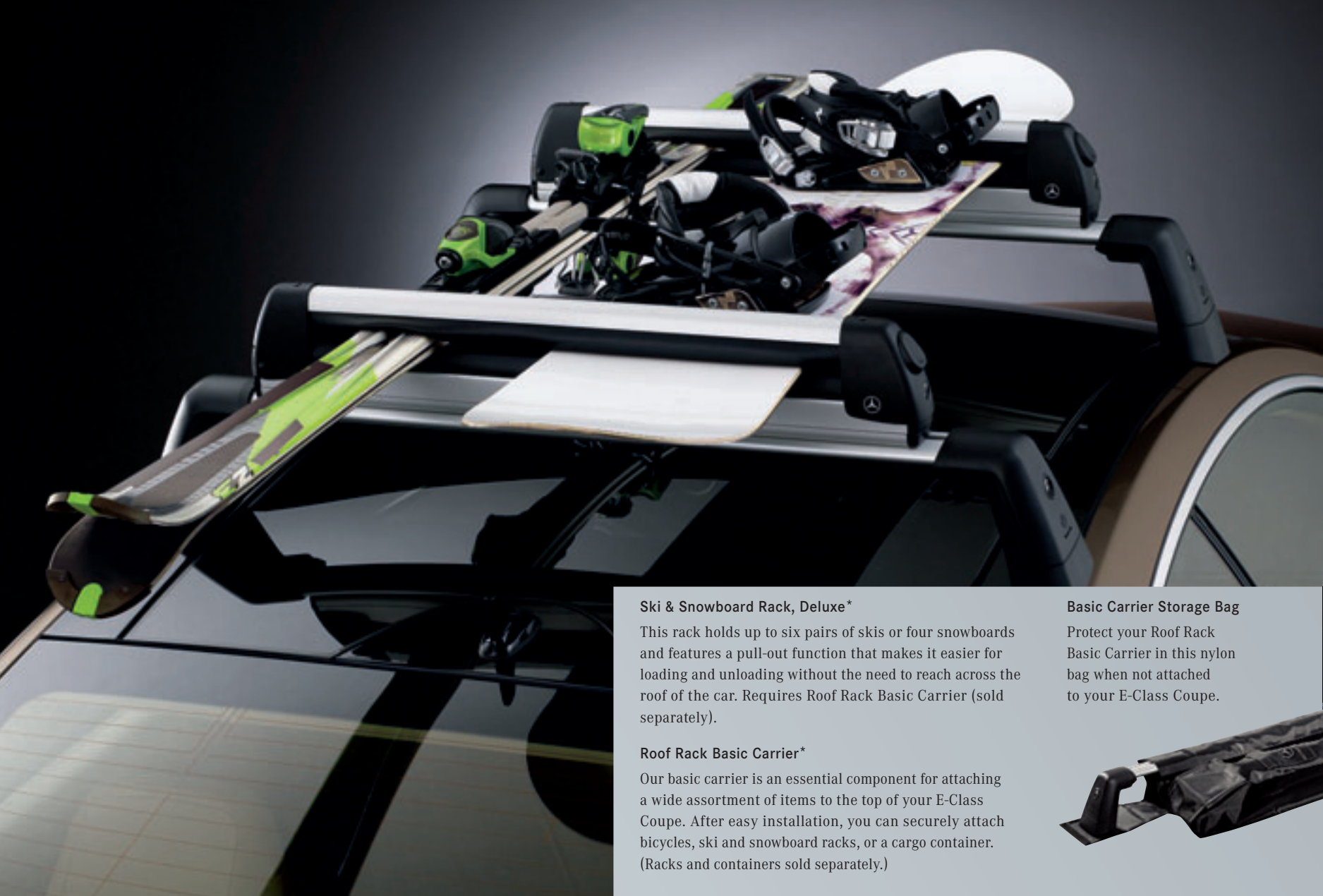
<sup>6</sup> The iPod Integration Kit is compatible with the following iPod/iPhone devices (sold separately): iPod Generation 4 (40GB), 5 and 6, iPod photo, iPod U2 Generation 5, iPod nano Generation 3 and 4, iPod touch Generation 1 and 2, iPhone Generation 1 and 3G. The iPod Integration Kit does not support telephone functionality of the iPhone.

<sup>7</sup> Available with COMAND only. Supported Memory Cards: SD, MMC, HS-MMC, DV-RS-MMC, C-Flash\*, T-Flash\*, Mini-SD\*, RS-MMC\*, MS, MS-Pro, HS-MS-MG-Pro, HS-MS-Pro, MS-Select, MS-Duo, MS-MG\*, MS-MG Pro\*, MS-Duo-MG\*, MS-Pro Duo, MS-ROM\*, X-card. \*Requires adapter (not included).

<sup>8</sup> Capacity: 2 GB | Read speed: 12.5 MB/s | Write speed: 5.5 MB/s

# ENTERTAINMENT & COMMUNICATION





#### **Ski & Snowboard Rack, Deluxe\***

This rack holds up to six pairs of skis or four snowboards and features a pull-out function that makes it easier for loading and unloading without the need to reach across the roof of the car. Requires Roof Rack Basic Carrier (sold separately).

#### **Roof Rack Basic Carrier\***

Our basic carrier is an essential component for attaching a wide assortment of items to the top of your E-Class Coupe. After easy installation, you can securely attach bicycles, ski and snowboard racks, or a cargo container. (Racks and containers sold separately.)

#### **Basic Carrier Storage Bag**

Protect your Roof Rack Basic Carrier in this nylon bag when not attached to your E-Class Coupe.



| LARGE |



| SMALL |

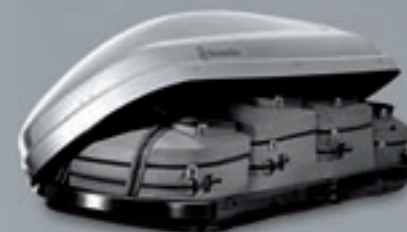
| MEDIUM |

#### Roof Cargo Containers\*

Create additional space for sports equipment and luggage with one of our aerodynamic, high-quality roof containers designed to nicely complement your E-Class Coupe.

Constructed of lightweight, yet exceptionally durable, impact-tested thermoplastic material. Features pressurized struts for easy lid operation and a security lock. Comes in silver finish.

Small model holds 11.5 cubic feet. Medium model holds 14 cubic feet. Large model holds 16 cubic feet. All models have a maximum load capacity of 110 lbs. Requires Roof Rack Basic Carrier (sold separately).



#### Luggage Set for Roof Cargo Container

This set of four sporty and functional bags is designed to fit inside our Small Roof Cargo Containers. The Luggage Set for the Large Roof Cargo Container additionally includes two bags for two pairs of skis each. Made from durable, weather-resistant materials. Shoulder straps included (sold separately).



#### Ski & Snowboard Rack, Standard\*

This rack is made to tote up to four pairs of skis or two snowboards atop your E-Class Coupe.

Requires Roof Rack Basic Carrier (sold separately).

#### Bicycle Rack\*

| For Roof Rack Basic Carrier |

This rack securely holds up to 3 bicycles and attaches to the Roof Rack Basic Carrier (sold separately). Spiral Lock set available to help secure your bicycle (sold separately).



*\*Products only available for E-Class Coupe*

# UTILITY & CARE

### A | Collapsible Shopping Crate

Make your next trip to the market more convenient with this collapsible shopping crate. To save space, it folds flat when not in use. Dimensions folded: 2" x 13" x 18".



### Cargo Nets, Floor, Loading Sill/Rear

Versatile and convenient, strong and durable nylon nets help you to secure objects in the back of your E-Class Vehicle. Rear net may be attached to the loading sill. Each net is sold separately.



### B | Flexible Cargo Stabilizer

This durable nylon and velcro-clad piece of foam offers firm lateral hold and helps protect objects from sliding around under normal driving conditions. Measures 36" x 2" x 2".



### Cargo Area Tray

Protect the cargo area of your E-Class with this large tray with 2" sides (see below). Formed from durable, easy-to-clean plastic to fit your vehicle.

### Cargo Box

Use cargo box (see right) to support and keep in place tall objects, such as grocery bags. | Fits Coupe only |



### Reversible Cargo Mat

This mat performs two functions: to protect the interior carpet of your E-Class Vehicle with a smooth soft fabric side and to prevent cargo from sliding with the rubberized side.



*Cargo Management*



# UTILITY & CARE



**BabySafe Plus Infant Seat (up to 29 lbs.)**

Deep, molded rear-facing seat design provides extra protection and padding designed to help protect very young children up to 29 lbs. or 31 in. long. Features integrated head support, adjustable sun/wind canopy, comfortable 3-position carry handle, and variable recline angle adjustment. Light grey fabric cover is removable for washing. Can be used in the vehicle with or without the base. Approved for use in commercial aircraft. Weighs less than 8 lbs. This seat is BabySmart<sup>®</sup> compatible and LATCH<sup>®</sup> compatible with provided LATCH belt<sup>®</sup>.

### DUO Plus Toddler Seat (20–40 lbs.)

Designed to afford excellent protection for children approximately 1 to 4 years of age. Features include single-handed adjustment to change from the upright position to the reclined and sleeping positions, height-adjustable shoulder belt, back area ventilation channels, and an additional tether for securing the top section. Fabric cover is removable for washing. This seat is LATCH<sup>9</sup> and BabySmart<sup>9</sup> compatible.



### KID Booster Seat (40–79 lbs.)

Any child who has out-grown the Toddler seat should be properly secured in a booster seat until he or she is at least 57" tall. KID Booster seat features a height and angle-adjustable backrest and head-rests that can be positioned for comfort. Integrated belt guides on the sides help to keep the lap belt from sliding over the child's abdomen where it could cause injury in an accident. Fabric cover is removable for washing. This seat is BabySmart<sup>9</sup> compatible.

<sup>9</sup> Please consult your owner's manual or dealer for proper installation of your child seat.

*BabySmart/OCS Safety Information: Most Mercedes-Benz vehicles from MY 1998 through 2003, select models from 2004 through 2006, and current G-Class vehicles are equipped with BabySmart™. Mercedes-Benz vehicles equipped with BabySmart™ have a device that recognizes the presence of BabySmart™-equipped child seat when properly installed in the front passenger seat and deactivates the passenger front air bag (check your vehicle's Operator's Manual or labels located on the sides of your dashboard to verify).*

*All current Mercedes-Benz models are equipped with the Occupant Classification System (OCS) (with exception of the G-Class) which is designed to turn off the front passenger's front airbag when the system senses the weight of a typical child 12 months old or less plus the weight of a standard child restraint. See vehicle's operators manual for important additional information on this system and further information regarding the transportation of children heavier than a typical 12 month old.*

*All Mercedes-Benz child safety seats meet or exceed U.S. Department of Transportation standards. They are also suitable for use in older vehicles that do not have integrated LATCH (Lower Anchors and Tethers for Children) attachment points. Visit the National Highway Traffic Safety Administration's website at <http://www.NHTSA.gov> for additional information about child safety seat laws and proper use.*

UTILITY & CARE

Child Safety Seats



#### **Car Cover**

This UV-resistant 3-layer cover helps protect the finish of your E-Class from the elements. Made from breathable Noah® fabric, it combines an excellent fit with durable construction. (Lock and cable available separately.)



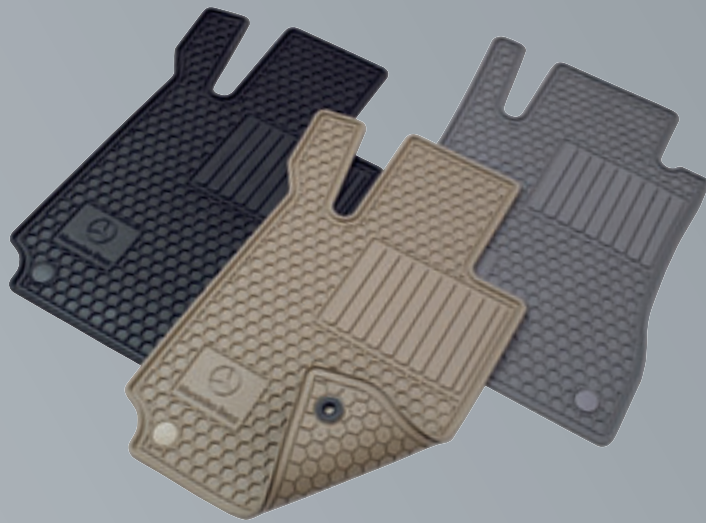
#### **Exterior Car Care Kit**

Clean and protect your Mercedes-Benz with the superior, specially formulated products in our exclusive Exterior Car Care Kit. Includes Car Shampoo, Light-Alloy Wheel Cleaner with brush, Car Sponge and a Car Care Cloth, all neatly packed into a Mercedes-Benz Leisure Bag.



#### **Interior Car Care Kit**

Keep the interior of your Mercedes-Benz looking its best with the superior, specially formulated products in our exclusive Interior Car Care Kit. Includes Cabin Care Spray, Glass Cleaner, Auto Glass Sponge and a Car Care Cloth, all neatly packed into a Mercedes-Benz Leisure Bag.



#### All-Season Floor Mats

These custom designed rubber floor mats are a great way to keep the carpet in your E-Class in top condition. The honeycomb design helps trap water, mud, snow and salt. Easy to clean. Four mats per set. Available in black, grey or beige.

#### UVS-100™ Sunshade

Keeps the inside of your E-Class Coupe cool, while protecting the interior all year long from harmful UV rays. Practical and durable. Made of reflective fabric laminated to a foam core.



#### Battery Trickle Charger

For those extended periods when your E-Class will not be used, this charging device will help ensure that your battery is fully energized when you need it.



#### Mud Flaps

Designed to match the contours of the E-Class, these durable formed black plastic mud flaps will help protect your vehicle and followers from some loose road debris, stones and the corrosive effects of salty road spray. | Available in pairs for the front and the rear. Cannot be fitted on vehicles equipped with AMG or Mercedes Sport body cladding. |

*Car Care  
Car Utility*

UTILITY & CARE

## APPEARANCE

Item	P.	Part no.
Chrome Door Handle Inserts (Set of 2)	08	A207 720 0040
Chrome Trim for Front Apron (Set of 2)	06	A207 820 0090
Diffuser-look Rear Apron Trim	07	A207 880 0008
Front Apron Spoiler Trim	06	A207 880 0108
Illuminated Door Sills (Convertible)	08	A207 680 0935
Illuminated Door Sills (Coupe)	08	A207 680 0335
<b>Licence Plate Frames</b>		
AMG Frame (Black pearl coat stainless steel)	08	BQ 688 0091
AMG Frame (Carbon fiber faux stainless steel)	08	BQ 688 0099
AMG Frame (Polished stainless steel)	08	BQ 688 0087
Marque Plate with Star logo (Black powder coat stainless steel)	08	BQ 688 0059
Marque Plate with Star logo (Polished stainless steel)	08	BQ 688 0058
Mercedes-Benz Frame (Black pearl stainless steel)	08	BQ 688 0090
Mercedes-Benz Frame (Black powder coat stainless steel)	08	BQ 688 0088
Mercedes-Benz Frame (Polished stainless steel)	08	BQ 688 0086
Mercedes-Benz Frame (Satin stainless steel)	08	BQ 688 0100
Slimline Frame (Black pearl stainless steel)	08	BQ 688 0092
Slimline Frame (Black powder coat)	08	BQ 688 0104
Slimline Frame (Black powder coat stainless steel)	08	BQ 688 0007
Slimline Frame (Polished stainless steel)	08	BQ 688 0005
Slimline Frame (Satin stainless steel)	08	BQ 688 0101
Slimline Frame (Stainless steel)	08	BQ 688 0103
<b>Light-Alloy Wheels</b>		
17" 5-Twin-Spoke Wheel (titanium silver, high sheen) Wheel Size: 7.5 J x 17 ET 45, Tire Size: 235/45 R17 Wheel Size RA: 8.5 J x 17 ET 49, Tire Size: 255/40 R17	04	A207 401 0902 A207 401 1002
18" 2-Tone 5-Spoke Wheel (black, high-sheen) Wheel Size: 8 J x 18 ET 45, Tire Size: 235/40 R18 Wheel Size RA: 8.5 J x 18 ET 49, Tire Size: 255/35 R18 XL	05	A207 401 1602 7X23 A207 401 1702 7X23
18" 5-Twin-Spoke Wheel (titanium silver, high sheen) Wheel Size: 8 J x 18 ET 45, Tire Size: 235/40 R18 Wheel Size RA: 8.5 J x 18 ET 49, Tire Size: 255/35 R18	05	A207 401 1102 A207 401 1202

Item	P.	Part no.
Rear Spoiler	07	A207 793 0088
Roof Spoiler (Coupe only)	07	A207 793 0188
Side Sill Panels (6-piece set)	06	A207 690 0079
Tire Valve Stem Caps (AMG)	05	BQ 640 8127
Tire Valve Stem Caps (Black)	05	BQ 640 8126
Tire Valve Stem Caps (Silver)	05	BQ 640 8128
Trunk Handle (Polished Stainless Steel)	08	BQ 657 0004
Trunk Handle (Satin Stainless Steel)	08	BQ 657 0034
Trunk Handle – with Mercedes-Benz laser-etching (Polished Stainless Steel)	08	BQ 675 0035
Trunk Handle – with Mercedes-Benz laser-etching (Stainless Steel)	08	BQ 675 0036
Wheel Hub Inserts (Classic Star & Laurel design in black)	05	B6 647 0201
Wheel Hub Inserts (Classic Star & Laurel design in blue)	05	B6 647 0210
Wheel Hub Inserts (Sterling silver with chrome Three-Pointed Star)	05	B6 647 0206
Wheel Hub Inserts (Black with chrome Three Pointed Star)	05	B6 647 0200
Wheel Hub Inserts (Titanium silver with chrome Three-Pointed Star)	05	B6 647 0203
Wheel Locks	05	B6 647 0155

## ENTERTAINMENT & COMMUNICATION

Item	P.	Part no.
iPod® Integration Kit	12	A204 870 4896
Media Interface	13	A204 827 0304
Navigation Map Update	10	see dealer
PCMCIA Multi-Card Reader	13	B6 782 3974
SD Memory Card	13	B6 782 3973

## UTILITY & CARE

Item	P.	Part no.
All-Season Floor Mats (Beige)	21	BQ 668 0712
All-Season Floor Mats (Black)	21	BQ 668 0710
All-Season Floor Mats (Grey)	21	BQ 668 0711
Basic Carrier Storage Bag	14	A000 890 0111
Battery Trickle Charger	21	B6 754 2028
Bicycle Lock (one bicycle lock, diameter 3 mm)	-	A000 583 1595
Bicycle Rack (for Roof Rack Basic Carrier)	15	A000 890 0293
Car Cover	20	BQ 660 0090
Cargo Area Tray	16	A207 814 0141
Cargo Box	16	A000 814 0041
Cargo Net, Floor	16	A207 868 0474
Cargo Net, Loading Sill/Rear	16	A212 868 0174
Child Safety Seat BabySafe Plus Infant (up to 29 lbs.)	18	B6 686 8214
Child Safety Seat DUO Plus Toddler (20-40 lbs.)	19	B6 686 8219
Child Safety Seat KID Booster (40-79 lbs.)	19	B6 686 8310
Collapsible Shopping Crate	16	B6 647 0995
Exterior Car Care Kit	20	A211 986 0100

### UTILITY & CARE

	P.	Part no.
Flexible Cargo Stabilizer	16	A001 987 1414
Interior Car Care Kit	20	A211 986 0000
Leather Chamois	-	BQ 600 0010
Luggage Set for Roof Cargo Container (Small)	15	A000 890 0411
Luggage Set for Roof Cargo Container (Large)	15	A000 890 0511
Mud Flaps (Set front)	21	A212 890 0078
Mud Flaps (Set rear)	21	A212 890 0178
Reversible Cargo Mat	16	A207 684 0005
Roof Cargo Container (Small)	15	A000 840 1562
Roof Cargo Container (Medium)	15	A000 840 1662
Roof Cargo Container (Large)	15	A000 840 1862
Roof Rack Basic Carrier	14	A207 890 0093
Sheepskin Wash Mitt	-	BQ 600 0005
Ski Bag (for inside)	-	A000 890 0711
Ski & Snowboard Rack, Deluxe	14	B6 685 1703
Ski & Snowboard Rack, Standard	15	B6 685 1702
UVS-100™ Sunshade	21	BQ 667 0034

Mercedes-Benz USA, LLC  
One Mercedes Drive  
Montvale, NJ 07645  
1-800-FOR-MERCEDES  
MBUSA.com

© 2010 Mercedes-Benz USA, LLC  
A Daimler Company

All illustrations and specifications contained in this brochure are based on the latest product information available at the time of publication. Actual product offerings may vary from those shown or may be subject to availability delays or discontinuance. Mercedes-Benz reserves the right to make changes at any time, without notice, in colors, materials, equipment, specifications and models. Any variations in colors shown are due to reproduction variations of the printing process. Illustrations may include test situations. Some vehicles may be shown with non-U.S. equipment. Vehicles are shown with optional equipment.

Unsecured cargo can become hazardous in a collision. Always secure cargo using the floor-mounted tie-down hooks. Cargo nets and organizers are not intended to prevent objects of excessive weight and bulk from sliding or rolling in the event of a collision or sudden stop. Always drive with caution when driving with cargo.

Certain accessories may require professional installation and/or additional components to complete the installation in your vehicle. Please consult your authorized Mercedes-Benz dealer for specific information about automotive accessories. Speak with a representative at your local authorized Mercedes-Benz dealership for current pricing on Genuine Mercedes-Benz Accessories. Visit [accessories.mbusa.com](http://accessories.mbusa.com) to shop online or call 1-800-FOR-MERCEDES (367-6372) to obtain the Lifestyle Collection catalog.

Printed in in the Federal Republic of Germany  
ACC-10-A2071-10000 (02/10)