



Mercedes-Benz

Genuine Accessories for the E-Class Sedan and Wagon

APPEARANCE

04

- Light-Alloy Wheels
- Exterior Appearance
- Interior Appearance

ENTERTAINMENT
& COMMUNICATION

10

- Rear-Seat Entertainment System
- Navigation Map Update
- Media Integration

UTILITY & CARE

14

- Carrier Systems
- Cargo Management
- Child Safety Seats
- Car Care
- Car Utility



18" 2-Tone Wheel | p.05

Chrome Door Handle Inserts | p.06

Side Skirts | p.07



■ Roof Spoiler | p.06

Licence Plate Frame | p.06 ■

■ Rear Apron Trim | p.07

Genuine
Mercedes-Benz
Accessories

E-CLASS

18" 5-Spoke Wheel

Finish: sterling silver

Wheel Size: 8.5 J x 18 ET 48 | Tire Size: 245/40 R18

Option for rear axle¹:

Wheel Size: 9 J x 18 ET 54 | Tire Size: 265/35 R18 XL

| Also shown on title |



| A |



| B |



A | Tire Valve Stem Caps

A perfect finishing touch, these chrome plated valve stem caps dress-up any wheel. Each a set of four. Available in black, silver or AMG designs.

B | Wheel Locks

Wheel locks can provide a subtle yet effective security touch to your E-Class, helping to protect your light-alloy wheels and tires from theft. One set secures four wheels. Includes coded key.

Wheel Hub Inserts

Add an attractive finishing touch to your wheels with these inserts. Various styles available:

- 1 | Classic Star & Laurel design in blue
 - 2 | Classic Star & Laurel design in black
 - 3 | Titanium silver with chrome Three-Pointed Star
 - 4 | Black with chrome Three Pointed Star
- | Titanium silver with chrome Three-Pointed Star (not shown)

Accessory wheels are only for specified tire sizes and may require use of wheel bolts other than those originally supplied with your vehicle. Failure to use proper equipment could result in an accident or vehicle damage.

See your authorized Mercedes-Benz dealer for details and installation.

Not compatible with snow chains. Serious wheel and tire damage may occur if the vehicle is operated on rough or damaged road surfaces or upon encountering road debris or obstacles.

17" 5-Spoke Wheel

Finish: sterling silver

Wheel Size: 8.5 J x 17 ET 48 | Tire Size: 245/45 R17 XL

¹ Staggered wheel sizes not compatible with 4MATIC all wheel drive vehicles. Must use front axle size on both front and rear axle.



Light-Alloy Wheels**18" 2-Tone 5-Spoke Wheel**

Finish: black and polished

Wheel Size: 8.5 J x 18 ET 48

Tire Size: 245/40 R18

Option for rear axle¹:

Wheel Size: 9 J x 18 ET 54

Tire Size: 265/35 R18 XL

| Also shown on page 02_03 |

APPEARANCE



1 | Roof Spoiler

This roof spoiler extends the roofline of your E-Class enhancing its sporty appearance by giving the rear window a more compact, coupe-style look. Tailor-made of high-quality material for quick installation and a perfect fit. Comes primed, ready for painting. Roof Spoiler for Sedan and Wagon are different designs. Please see pictures as a reference.

2 | Rear Spoiler

Add this rear spoiler for a more athletic look for your E-Class, and watch as it subtly accentuates the trunk lines of your vehicle. Tailor-made of high-quality material for quick installation and a perfect fit. Comes primed, ready for painting. | Available for Sedan only | Also available in Carbon Fiber |



3 | License Plate Frames

Choose from several quality stainless steel designs in an assortment of durable finishes to enhance the appearance of your license plates without blocking registration tags. Design styles include: Mercedes-Benz frame, Slimline frame, AMG Logo frame, and Star Marque solid plate. Please see INDEX for finish options for each design. From Top to Bottom: **A | Marque Plate** with star logo **B | Nameplate Frames** Mercedes-Benz (Polished, Black Powder Coat) and AMG (Carbon Fiber) **C | Slimline Frame** (Black Pearl)

5 | Trunk Handle

Made of stainless steel in polished or satin finish, this handle attaches to the license plate and trunk lid to help prevent fingerprints and reduce the possibility of scratching the finish on your E-Class. It perfectly complements our wide assortment of genuine License Plate Frames. Also available with elegantly laser-etched Mercedes-Benz name.

4 | Chrome Door Handle Inserts

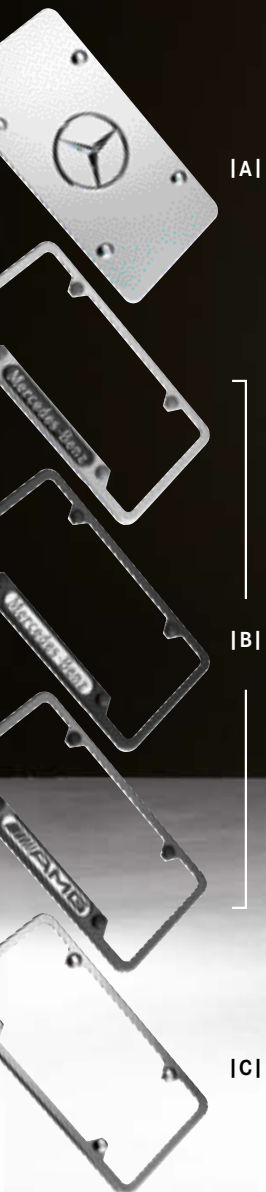
Help protect your finish from scratches and add a touch of style with a set of four chrome door handle inserts.



6 | Front Apron Spoiler Lips

These aerodynamic components expand on the E-Class's expressive features to create a distinctive design, accentuating the elegance and dynamism of your Mercedes-Benz. | Fits Luxury Models Only |

Exterior Appearance
Interior Appearance



| A |

| B |

| C |



| 11 |

| 8 |

| 7 |

7 | Rear Apron Trim

The distinctive design of the front apron spoiler lips is echoed here at the rear, creating a deeper, broader look for the rear of the vehicle.
| Fits Luxury Models Only |

8 | Side Skirts

The distinctive design of the Side Skirts harmonises with other available exterior accessories (6-piece set).
| Also shown on page 02_03 | Fits Luxury Models Only |
| Availability may be delayed |

APPEARANCE



Wood & Leather Steering Wheel

Add a touch of distinctive elegance to your E-Class with this steering wheel, made from durable richly-grained leather and hand-burnished ash wood (shown in image). Also available in burl walnut with black, beige or grey leather. | Not available for Sport or Convertible or Luxury Models with Wheel Package or Distronic Plus Package |



Pedal Covers in Stainless Steel

Pedal covers in ground stainless steel with non-slip stud panel. Available for automatic and manual models. | Availability may be delayed |



Illuminated Door Sills

Light-up your E-Class in eye-catching style each time you open the front door with luminous blue-colored "Mercedes-Benz" stainless steel door sills.

AMG Door Pin

In high-quality stainless steel.



APPEARANCE

REAR-SEAT ENTERTAINMENT SYSTEM

Being a passenger has never been so entertaining.



Rear-Seat Entertainment System²

This high-performance entertainment system allows the rear passengers to watch DVDs, look at their favorite pictures and even play video games. Two superb 7" LCD color screens are mounted to the back of the seat just behind the headrest to eliminate the driver distraction, function independently with integrated DVD players and are able to play 2 different movies or music choices simultaneously, allowing each rear passenger to select their own individual entertainment. Wireless noise-reducing headphones allow for tangle-free operation, easy storage and fewer noise distraction for the driver. A wide range of popular media formats are supported for image, music and video files. The USB and SD card interfaces allow further storage media to be connected with the Rear-Seat Entertainment System.

A range of multimedia connections, 2 sets of infrared headphones and a remote control - the Rear-Seat Entertainment System offers everything you need for in-car entertainment



²Not in conjunction with Multi-contour Driver Seat, no factory-fitted pre-installation required.



MERCEDES-BENZ NAVIGATION MAP UPDATE

More than a Map.™

Navigation Map Update

The Mercedes-Benz COMAND Navigation System³ is a fully integrated system that combines Global Positioning System (GPS) technology with electronic mapping software to help you to plan trips, navigate detours and avoid getting lost. Global Positioning System (GPS) satellites continuously track your vehicle's location and the system relies on mapping information in order to give you the most accurate and efficient routes.

Notice however, how quickly the surroundings change: roads are added or diverted, restaurants open and close, hotels and hospitals are built, ATMs move. In fact, as much as 20 percent of the navigation data the system relies on changes every year. That is why Mercedes-Benz offers reliable, and updated navigation data to help get you where you need to go effortlessly. The Navigation Map Updates are available for purchase from your authorized Mercedes-Benz dealer.

The system can route you through more than 6.1 million miles of navigable roads in the United States and Canada. Just enter the address on the intelligent destination input screen, and the system takes over, guiding you audibly and with a clear and detailed 7" LCD map display. Do you need an idea where to go? The Navigation

System also offers 1.7 million Points of Interest in 40 categories including ATMs, restaurants, hotels, airports, museums and more.

³Navigation system data includes the United States, Canada, Puerto Rico, Hawaii and Virgin Islands. Directional assistance provided only when GPS coverage is available. Maps do not cover all areas nor all routes within an area. While the navigation system provides directional assistance, the driver must remain focused on safe driving behavior, including paying attention to traffic and street signs. The driver should utilize the system's audio cues while driving and should only consult the map or verbal displays once the vehicle has been stopped in a safe place. See your authorized Mercedes-Benz dealer for availability and details.

Rear-Seat Entertainment System

Navigation Map Update

ENTERTAINMENT
& COMMUNICATION

MEDIA INTEGRATION

Your music. Your Mercedes-Benz.

Taking your personal music collection with you wherever you go has never been easier. Mercedes-Benz now offers seamless integration of your iPod®/iPhone®⁴ into the audio system of your E-Class. With an interface that is compatible with any dock connector—equipped iPod/iPhone device, your iPod/iPhone charges while connected⁴. Steering wheel controls and a visual display of the track information make your iPod/iPhone a perfect fit with your Mercedes-Benz.

Mercedes-Benz iPod Integration Kit⁵

The Mercedes-Benz iPod Integration Kit puts the control at your finger-tips while playing your favorite music directly from your iPod or iPhone⁴. As with the Media Interface, the iPod integration connector is located in the glove compartment, and is compatible with most iPod models.⁵

Comfortably control your iPod by using your steering wheel buttons:

- A | *Navigate within the iPod music menu*
- B | *Access the Main Menu and control the volume*
- C | *View the artist and title information displayed in the vehicle's instrument cluster*



Media Interface

The Media Interface⁶ allows you to connect your audio devices to the interface located in the vehicle's glovebox. The Media Interface comes standard with two cables, an iPod connector [1] and a universal AUX input connector⁷.

A non-ipod USB cable [2] is available at your Mercedes-Benz dealer, which will connect select⁸ USB sticks or media players with a USB port.

The audio output can be selected and controlled through the existing audio system in your vehicle. The current status of your audio device will also be displayed in the vehicle instrument cluster allowing you to keep your attention on the road.

⁴ iPod and iPhone are registered products of Apple Computer. All iPod and iPhone devices are sold separately. iPod Integration Kit also charges iPod/iPhone devices which support USB charging only (e.g. iPhone 3G).

⁵ The iPod Integration Kit is compatible with the following iPod/iPhone devices (sold separately): iPod Generation 4 (40GB), 5 and 6, iPod photo, iPod U2 Generation 5, iPod nano Generation 3 and 4, iPod touch Generation 1 and 2, iPhone Generation 1 and 3G. The iPod Integration Kit does not support telephone functionality of the iPhone.





PCMCIA Multi-Card Reader⁹

Listen comfortably to your music with the PCMCIA Adapter of your COMAND system. The Plug & Play system in the COMAND immediately recognizes your PCMCIA Multi-Card Reader. A Memory Card (sold separately) is required to utilize the PCMCIA Multi-Card Reader. MP3-, WMA-, and ACC-Files are supported.

SD Memory Card¹⁰

The COMAND APS in your E-Class features a slot for SD memory cards. Use the SD memory card as a convenient way to play music.

⁶ Factory option.

⁷ Control of devices connected via AUX is limited to volume control.

⁸ For a list of compatible devices, please visit <http://www.mbusa-mobile.com>

⁹ Available with COMAND only. Supported Memory Cards: SD, MMC, HS-MMC, DV-RS-MMC, C-Flash*, T-Flash*, Mini-SD*, RS-MMC*, MS, MS-Pro, HS-MS-MG-Pro, HS-MS-Pro, MS-Select, MS-Duo, MS-MG*, MS-MG Pro*, MS-Duo-MG*, MS-Pro Duo, MS-ROM*, X-card. *Requires adapter (not included).

¹⁰ Capacity: 2 GB | Read speed: 12.5 MB/s | Write speed: 5.5 MB/s

| LARGE |



| SMALL |

| MEDIUM |



Roof Cargo Containers

Create additional space for sports equipment and luggage with one of our aerodynamic, high-quality roof containers designed to nicely complement your E-Class. Constructed of lightweight, yet exceptionally durable, impact-tested thermoplastic material. Features pressurized struts for easy lid operation and a security lock. Comes in silver finish.

Small model holds 11.5 cubic feet. Medium model holds 14 cubic feet. Large model holds 16 cubic feet. All models have a maximum load capacity of 110 lbs. Requires Roof Rack Basic Carrier (sold separately).



Luggage Set for Roof Cargo Container

This set of four sporty and functional bags is designed to fit inside our Small Roof Cargo Containers. The Luggage Set for the Large Roof Cargo Container additionally includes two bags for two pairs of skis each. Made from durable, weather-resistant materials. Shoulder straps included (sold separately).

1 | Ski & Snowboard Rack, Deluxe

This rack holds up to six pairs of skis or four snowboards and features a pull-out function that makes it easier for loading and unloading without the need to reach across the roof of the car. Requires Roof Rack Basic Carrier (sold separately).

2 | Ski & Snowboard Rack, Standard

This rack is made to tote up to four pairs of skis or two snowboards atop your E-Class. Requires Roof Rack Basic Carrier (sold separately).



Basic Carrier Storage Bag

Protect your Roof Rack Basic Carrier in this nylon bag when not attached to your E-Class.





Roof Rack Basic Carrier | for Sedan |
Roof Rack Basic Carrier, “easy-fix” | for Wagon |

Our basic carrier is an essential component for attaching a wide assortment of items to the top of your E-Class. After easy installation, you can securely attach bicycles, ski and snowboard racks, or a cargo container. (Racks and containers sold separately.)

Bicycle Rack
| For Roof Rack Basic Carrier |

This rack securely holds up to 3 bicycles and attaches to the Roof Rack Basic Carrier (sold separately). Spiral Lock set available to help secure your bicycle (sold separately).

UTILITY & CARE



Reversible Cargo Mat

This mat performs two functions: to protect the interior carpet of your E-Class with a smooth soft fabric side or to prevent cargo from sliding with the rubberized side.



Cargo Nets, Floor, Loading Sill/Rear

Versatile and convenient, strong and durable nylon nets help you to secure objects in the back of your E-Class. Rear net may be attached to the loading sill. Each net is sold separately.

Flexible Cargo Stabilizer

This durable nylon and velcro-clad piece of foam offers firm lateral hold and helps protect objects from sliding around under normal driving conditions. Measures 36" x 2" x 2".





Cargo Area Tray (Deep)

The hygienic way to transport items in the load compartment. Suitable for transporting foodstuffs. | Available for Wagon only |



Cargo Area Tray/Cargo Box

Protect the cargo area of your E-Class with this large tray with 2" sides. Formed from durable, easy-to-clean plastic to fit your vehicle. Use optional cargo box to support and keep in place tall objects, such as grocery bags. (Cargo box sold separately.)



Comfort Box

Our new Comfort Box provides a practical and isolated storage area for your personal items while in trunk. While not in use, the Comfort Box easily folds up to give you maximum space of the trunk. | Available for Sedan only |

Collapsible Shopping Crate

Make your next trip to the market more convenient with this collapsible shopping crate. To save space, it folds flat when not in use. Dimensions folded: 2" x 13" x 18".





BabySafe Plus Infant Seat (up to 29 lbs.)

Deep, molded rear-facing seat design provides extra protection and padding designed to help protect very young children up to 29 lbs. or 31 in. long. Features integrated head support, adjustable sun/wind canopy, comfortable 3-position carry handle, and variable recline angle adjustment. Light grey fabric cover is removable for washing. Can be used in the vehicle with or without the base. Approved for use in commercial aircraft. Weighs less than 8 lbs. This seat is BabySmart⁹ compatible and LATCH¹¹ compatible with provided LATCH belt¹¹.





DUO Plus Toddler Seat (20–40 lbs.)

Designed to afford excellent protection for children approximately 1 to 4 years of age. Features include single-handed adjustment to change from the upright position to the reclined and sleeping positions, height-adjustable shoulder belt, back area ventilation channels, and an additional tether for securing the top section. Fabric cover is removable for washing. This seat is LATCH¹¹ and BabySmart¹¹ compatible.



¹¹ Please consult your owner's manual or dealer for proper installation of your child seat.

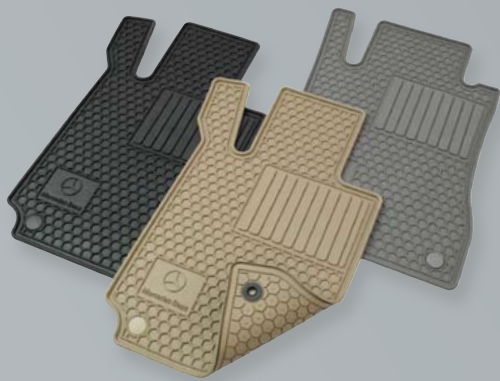
BabySmart/OCS Safety Information: Most Mercedes-Benz vehicles from MY 1998 through 2003, select models from 2004 through 2006, and current G-Class vehicles are equipped with BabySmart™. Mercedes-Benz vehicles equipped with BabySmart™ have a device that recognizes the presence of BabySmart™-equipped child seat when properly installed in the front passenger seat and deactivates the passenger front air bag (check your vehicle's Operator's Manual or labels located on the sides of your dashboard to verify).

All current Mercedes-Benz models are equipped with the Occupant Classification System (OCS) (with exception of the G-Class) which is designed to turn off the front passenger's front airbag when the system senses the weight of a typical child 12 months old or less plus the weight of a standard child restraint. See vehicle's operators manual for important additional information on this system and further information regarding the transportation of children heavier than a typical 12 month old.

All Mercedes-Benz child safety seats meet or exceed U.S. Department of Transportation standards. They are also suitable for use in older vehicles that do not have integrated LATCH (Lower Anchors and Tethers for Children) attachment points. Visit the National Highway Traffic Safety Administration's website at <http://www.NHTSA.gov> for additional information about child safety seat laws and proper use.

UTILITY & CARE

Child Safety Seats



UVS-100™ Sunshade

Keeps the inside of your E-Class cool, while protecting the interior all year long from harmful UV rays. Practical and durable. Made of reflective fabric laminated to a foam core.

All-Season Floor Mats

These custom designed rubber floor mats are a great way to keep the carpet in your E-Class in top condition. The honeycomb design helps trap water, mud, snow and salt. Easy to clean. Four mats per set. Available in black, grey or beige.

Car Cover

This UV-resistant 3-layer cover helps protect the finish of your E-Class from the elements. Made from breathable Noah® fabric, it combines an excellent fit with durable construction. (Lock and cable available separately.) | Available for Sedan only |



Coat Hanger

Robust coat hangers made from chromed metal. Easy to attach to front head rests. The ideal way to transport clothing without creasing them. (For safety, please remove with passenger in rear seat.)



*Car Care
Car Utility*



1 | Mud Flaps

Designed to match the contours of the E-Class, these durable formed black plastic mud flaps will help protect your vehicle and followers from some loose road debris, stones and the corrosive effects of salty road spray.

| Available in pairs for the front and the rear. Front Mud Flaps cannot be fitted with Sport or AMG package. |

2 | Car Care Kit Interior

Keep the interior of your Mercedes-Benz looking its best with the superior, specially formulated products in our exclusive Interior Car Care Kit. Includes Cabin Care Spray, Glass Cleaner, Auto Glass Sponge and a Car Care Cloth, all neatly packed into a Mercedes-Benz Leisure Bag.

3 | Car Care Kit Exterior

Clean and protect your Mercedes-Benz with the superior, specially formulated products in our exclusive Exterior Car Care Kit. Includes Car Shampoo, Light-Alloy Wheel Cleaner with brush, Car Sponge and a Car Care Cloth, all neatly packed into a Mercedes-Benz Leisure Bag.

4 | Battery Trickle Charger

For those extended periods when your E-Class will not be used, this charging device will help ensure that your battery is fully energized when you need it.

UTILITY & CARE

APPEARANCE

| Item | P. | Part no. |
|---|----|--|
| AMG Door Pin (for Front Doors) | 09 | A000 766 0228 |
| AMG Door Pin (for Rear Doors) | 09 | A000 766 0328 |
| Chrome Door Handle Inserts (Set of 4) | 06 | A212 720 0040 |
| Illuminated Door Sills (Beige) | 09 | A212 680 0235 8N84 |
| Illuminated Door Sills (Black) | 09 | A212 680 0235 9051 |
| Illuminated Door Sills (Grey) | 09 | A212 680 0235 7E94 |
| Front Apron Spoiler Lips | 06 | A212 880 0508 |
| Licence Plate Frames | | |
| AMG Frame (Black pearl coat stainless steel) | 06 | BQ 688 0091 |
| AMG Frame (Carbon fiber faux stainless steel) | 06 | BQ 688 0099 |
| AMG Frame (Polished stainless steel) | 06 | BQ 688 0087 |
| Marque Plate with Star logo (Black powder coat stainless steel) | 06 | BQ 688 0059 |
| Marque Plate with Star logo (Polished stainless steel) | 06 | BQ 688 0058 |
| Mercedes-Benz Frame (Black pearl stainless steel) | 06 | BQ 688 0090 |
| Mercedes-Benz Frame (Black powder coat stainless steel) | 06 | BQ 688 0088 |
| Mercedes-Benz Frame (Polished stainless steel) | 06 | BQ 688 0086 |
| Mercedes-Benz Frame (Satin stainless steel) | 06 | BQ 688 0100 |
| Slimline Frame (Black pearl stainless steel) | 06 | BQ 688 0092 |
| Slimline Frame (Black powder coat) | 06 | BQ 688 0104 |
| Slimline Frame (Black powder coat stainless steel) | 06 | BQ 688 0007 |
| Slimline Frame (Polished stainless steel) | 06 | BQ 688 0005 |
| Slimline Frame (Satin stainless steel) | 06 | BQ 688 0101 |
| Slimline Frame (Stainless steel) | 06 | BQ 688 0103 |
| Light-Alloy Wheels | | |
| 18" 5-Spoke Wheel (sterling silver) Wheel Size: 8.5 J x 18 ET 48, Tire Size: 245/40 R18 Wheel Size RA: 9 J x 18 ET 54, Tire Size: 265/35 R18 XL | 04 | A212 401 2102 A212 401 2202 |
| 17" 5-Spoke Wheel (sterling silver) Wheel Size: 8.5 J x 17 ET 48, Tire Size: 245/45 R17 XL | 04 | A212 401 1902 |
| 18" 2-Tone 5-Spoke Wheel (black and polished) Wheel Size: 8.5 J x 18 ET 48, Tire Size: 245/40 R18 Wheel Size RA: 9 J x 18 ET 54, Tire Size: 265/35 R18 XL | 05 | A212 401 3402 7X23 A212 401 3502 7X23 |
| Pedal Covers in Stainless Steel | 09 | A000 290 0501 |
| Rear Apron Trim | 07 | A212 884 0308 |

ENTERTAINMENT & COMMUNICATION

| Item | P. | Part no. |
|--------------------------------|----|---------------|
| iPod® Integration Kit | 12 | A204 870 4496 |
| iPod® Integration Kit, Video | 12 | A204 870 4896 |
| Media Interface USB Cable | 12 | A204 827 0304 |
| Navigation Map Update | 11 | see dealer |
| PCMCIA Multi-Card Reader | 13 | B6 782 3974 |
| Rear-Seat Entertainment System | 10 | B6 782 7056 |
| SD Memory Card | 13 | B6 782 3973 |

APPEARANCE

| Item | P. | Part no. |
|--|----|--------------------|
| Rear Spoiler | 06 | A212 793 0288 |
| Roof Spoiler (for Sedan) | 06 | A212 793 0388 |
| Roof Spoiler (for Wagon) | 06 | A212 793 0488 |
| Side Skirts (for Sedan) | 07 | A212 690 0079 |
| Side Skirts (for Wagon) | 07 | A212 690 0179 |
| Tire Valve Stem Caps (AMG) | 04 | BQ 640 8127 |
| Tire Valve Stem Caps (Black) | 04 | BQ 640 8126 |
| Tire Valve Stem Caps (Silver) | 04 | BQ 640 8128 |
| Trunk Handle (Polished Stainless Steel) | 06 | BQ 675 0004 |
| Trunk Handle (Satin Stainless Steel) | 06 | BQ 675 0034 |
| Trunk Handle - with Mercedes-Benz laser-etching (Polished Stainless Steel) | 06 | BQ 675 0035 |
| Trunk Handle - with Mercedes-Benz laser-etching (Stainless Steel) | 06 | BQ 675 0036 |
| Wheel Hub Inserts (Black with chrome Three-Pointed Star) | 04 | B6 647 0200 |
| Wheel Hub Inserts (Classic Star & Laurel design in black) | 04 | B6 647 0201 |
| Wheel Hub Inserts (Classic Star & Laurel design in blue) | 04 | B6 647 0120 |
| Wheel Hub Inserts (Sterling silver with chrome Three-Pointed Star) | 04 | B6 647 0206 |
| Wheel Hub Inserts (Titanium silver with chrome Three-Pointed Star) | 04 | B6 647 0203 |
| Wheel Locks | 04 | B6 647 0155 |
| Wood & Leather Steering Wheel (Ash Wood with Black Leather) | 09 | A212 4601 1039 E38 |
| Wood & Leather Steering Wheel (Burl Walnut with Black Leather) | 09 | A212 4600 7039 E38 |
| Wood & Leather Steering Wheel (Burl Walnut with Beige Leather) | 09 | A212 4600 7038 P18 |
| Wood & Leather Steering Wheel (Burl Walnut with Grey Leather) | 09 | A212 4600 7037 K53 |

UTILITY & CARE

| Item | P. | Part no. |
|--|----|--------------------|
| All-Season Floor Mats (Beige, set of 4) | 20 | BQ 668 0712 |
| All-Season Floor Mats (Black, set of 4) | 20 | BQ 668 0710 |
| All-Season Floor Mats (Grey, set of 4) | 20 | BQ 668 0711 |
| Basic Carrier Storage Bag | 14 | A000 890 0111 |
| Battery Trickle Charger | 21 | B6 754 2029 |
| Bicycle Lock (3 mm, Single) | - | A000 583 1595 |
| Bicycle Lock (6 mm, Single) | - | A000 583 1895 |
| Bicycle Rack (for Roof Rack Basic Carrier) | 15 | A000 890 0293 |
| Car Care Kit Exterior | 21 | A211 986 0100 |
| Car Care Kit Interior | 21 | A211 986 0000 |
| Car Cover (for Sedan) | 20 | BQ 660 0089 |
| Cargo Area Tray (for Sedan) | 17 | A212 814 0041 |
| Cargo Area Tray, Deep (for Wagon) | 17 | A212 814 0441 |
| Cargo Area Tray, Shallow (for Wagon) | - | A212 814 0341 |
| Cargo Box | 17 | A000 814 0041 |
| Cargo Net, Floor (for Sedan) | 16 | A212 868 0074 |
| Cargo Net, Floor (for Wagon) | 16 | A212 868 0374 |
| Cargo Net, Loading Sill/Rear (for Sedan) | 16 | A212 868 0174 |
| Cargo Net, Second Row Seat Back (for Wagon) | 16 | A212 868 0474 |
| Child Safety Seat BabySafe Plus Infant (up to 29 lbs.) | 18 | B6 686 8214 |
| Child Safety Seat DUO Plus Toddler (20-40 lbs.) | 19 | B6 686 8219 |
| Coat Hanger | 21 | A000 814 0132 |
| Collapsible Shopping Crate | 17 | A000 814 0041 |
| Comfort Box | 17 | A212 680 0010 9051 |
| Concertina Load Sill Protector, Black | - | A212 680 0246 |
| Flexible Cargo Stabilizer | 16 | A001 987 1414 |
| Luggage Set for Roof Cargo Container (Small) | 14 | A000 890 0411 |
| Luggage Set for Roof Cargo Container (Large) | 14 | A000 890 0511 |
| Mud Flaps (Set front) | 21 | A212 890 0078 |
| Mud Flaps (Set rear) | 21 | A212 890 0178 |
| Reversible Cargo Mat (for Sedan) | 16 | A212 680 0146 |
| Reversible Cargo Mat (Short) (for Wagon) | - | A212 680 0046 |

UTILITY & CARE

| Item | P. | Part no. |
|---|----|---------------|
| Roof Cargo Container (Small) | 14 | A000 840 1562 |
| Roof Cargo Container (Medium) | 14 | A000 840 1662 |
| Roof Cargo Container (Large) | 14 | A000 840 1862 |
| Roof Rack Basic Carrier (for Sedan) | 15 | A212 890 0393 |
| Roof Rack Basic Carrier, "easy-fix" (for Wagon) | 15 | A212 890 0493 |
| Ski Bag (for Roof Cargo Container) | - | A000 846 0806 |
| Ski Bag (for inside) | - | A000 890 0711 |
| Ski Rack Insert (for Roof Cargo Container, Large) | - | A000 840 4818 |
| Ski & Snowboard Rack, Deluxe | 14 | B6 685 1703 |
| Ski & Snowboard Rack, Standard | 14 | B6 685 1702 |
| UVS-100™ Sunshade | 20 | BQ 667 0035 |

Mercedes-Benz USA, LLC
One Mercedes Drive
Montvale, NJ 07645
1-800-FOR-MERCEDES
MBUSA.com

© 2010 Mercedes-Benz USA, LLC
A Daimler Company

All illustrations and specifications contained in this brochure are based on the latest product information available at the time of publication. Actual product offerings may vary from those shown or may be subject to availability delays or discontinuance. Mercedes-Benz reserves the right to make changes at any time, without notice, in colors, materials, equipment, specifications and models. Any variations in colors shown are due to reproduction variations of the printing process. Illustrations may include test situations. Some vehicles may be shown with non-U.S. equipment. Vehicles are shown with optional equipment.

Unsecured cargo can become hazardous in a collision. Always secure cargo using the floor-mounted tie-down hooks. Cargo nets and organizers are not intended to prevent objects of excessive weight and bulk from sliding or rolling in the event of a collision or sudden stop. Always drive with caution when driving with cargo.

Certain accessories may require professional installation and/or additional components to complete the installation in your vehicle. Please consult your authorized Mercedes-Benz dealer for specific information about automotive accessories. Speak with a representative at your local authorized Mercedes-Benz dealership for current pricing on Genuine Mercedes-Benz Accessories. Visit accessories.mbusa.com to shop online or call 1-800-FOR-MERCEDES (367-6372) to obtain the Lifestyle Collection catalog.