



Mercedes-Benz

Genuine Accessories for the S-Class

APPEARANCE

04

- *Light-Alloy Wheels*
- *Exterior Appearance*
- *Interior Appearance*

ENTERTAINMENT & COMMUNICATION

08

- *Navigation Map Update*
- *Media Integration*

UTILITY & CARE

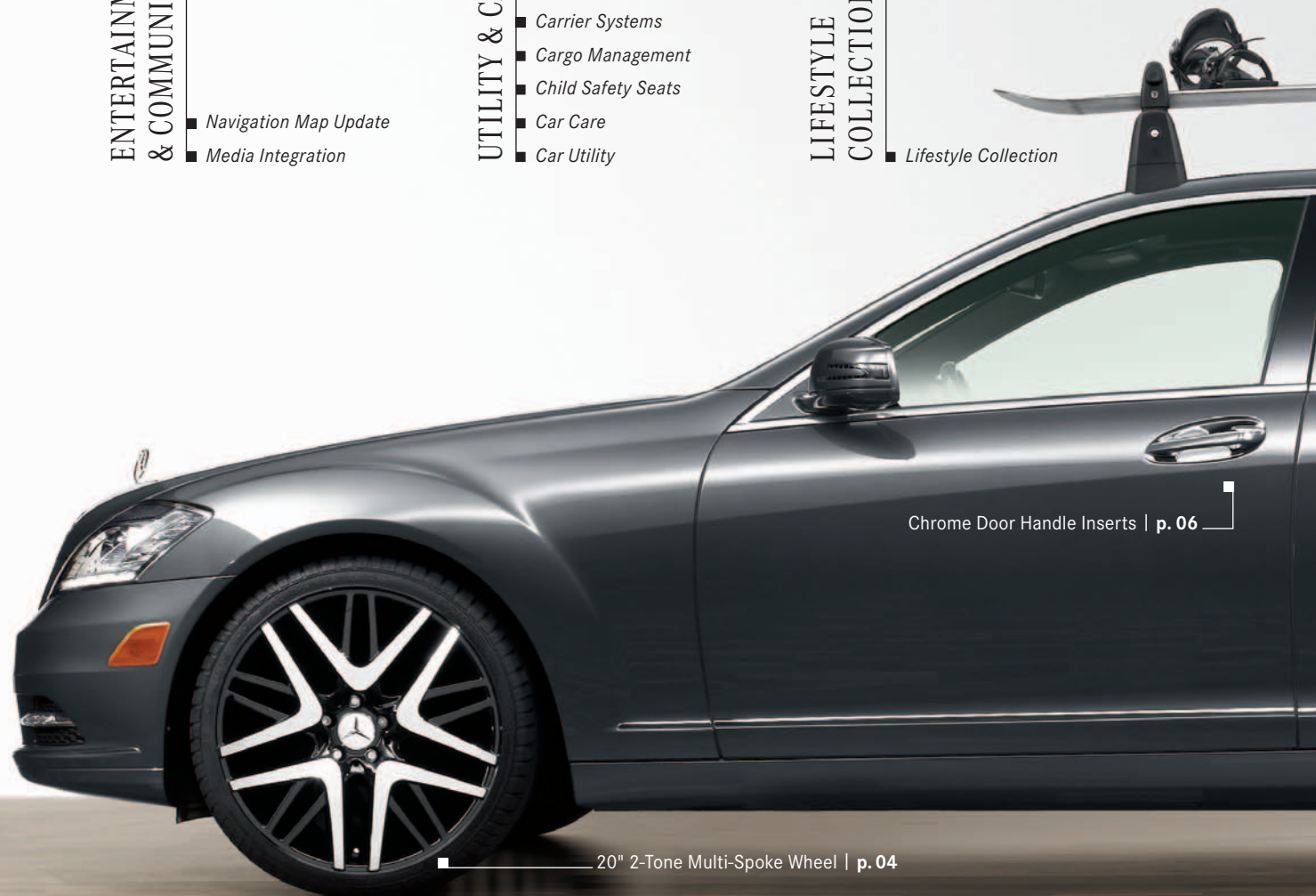
10

- *Carrier Systems*
- *Cargo Management*
- *Child Safety Seats*
- *Car Care*
- *Car Utility*

LIFESTYLE COLLECTION

16

- *Lifestyle Collection*



Chrome Door Handle Inserts | p. 06

20" 2-Tone Multi-Spoke Wheel | p. 04



Ski & Snowboard Rack, Deluxe | p. 10

Roof Rack Basic Carrier | p. 10

Genuine
Mercedes-Benz
Accessories

S-CLASS



20" 2-Tone Multi-Spoke Wheel

Finish: black, high-sheen

Wheel Size: 8.5 J x 20 ET 43 | Tire Size: 255/35 R20

Option for rear axle:

Wheel Size: 9.5 J x 20 ET 43 | Tire Size: 275/35 R20

Accessory wheels are only for specified tire sizes and may require use of wheel bolts other than those originally supplied with your vehicle. Failure to use proper equipment could result in an accident or vehicle damage.

See your authorized Mercedes-Benz dealer for details and installation.

Not compatible with snow chains. Serious wheel and tire damage may occur if the vehicle is operated on rough or damaged road surfaces or upon encountering road debris or obstacles.

Light-Alloy Wheels**20" 5-Spoke Wheel**

Finish: titanium silver, high-sheen

Wheel Size: 8.5 J x 20 ET 43 | Tire Size: 255/35 R20

Option for rear axle:

Wheel Size: 9.5 J x 20 ET 43 | Tire Size: 275/35 R20

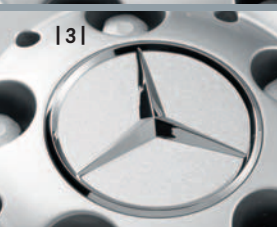
**19" 5-Double-Spoke Wheel**

Finish: titanium silver, high-sheen

Wheel Size: 8.5 J x 19 ET 43 | Tire Size: 255/40 R19 XL

Option for rear axle:

Wheel Size: 9.5 J x 19 ET 43 | Tire Size: 275/40 R19

**Wheel Hub Inserts**

Add an attractive finishing touch to your wheels with these inserts. Various styles available:

- 1** | Classic Star & Laurel design in blue
- 2** | Classic Star & Laurel design in black
- 3** | Sterling silver with chrome Three-Pointed Star
- 4** | Titanium silver with chrome Three-Pointed Star

Tire Valve Stem Caps

A perfect finishing touch, these chrome plated valve-stem caps dress-up any wheel. Each a set of four. Available in black, silver or AMG designs.

**Wheel Locks**

Wheel locks can provide a subtle yet effective security touch to your S-Class, helping to protect your light-alloy wheels and tires from theft. One set secures four wheels. Includes coded key.



APPEARANCE



Chrome Door Handle Inserts

Help protect your finish from scratches and add a touch of style with a set of four chrome door handle inserts.



Illuminated Door Sills

Light-up your S-Class in eye-catching style each time you open the door with these luminous blue-colored "Mercedes-Benz" stainless steel door sills.

Trunk Handle

Made of stainless steel in polished or satin finish, this handle attaches to the license plate and trunk lid to help prevent fingerprints and reduce the possibility of scratching the finish on your S-Class. It perfectly complements our wide assortment of genuine License Plate Frames. Also available with elegantly laser-etched Mercedes-Benz name.

License Plate Frames

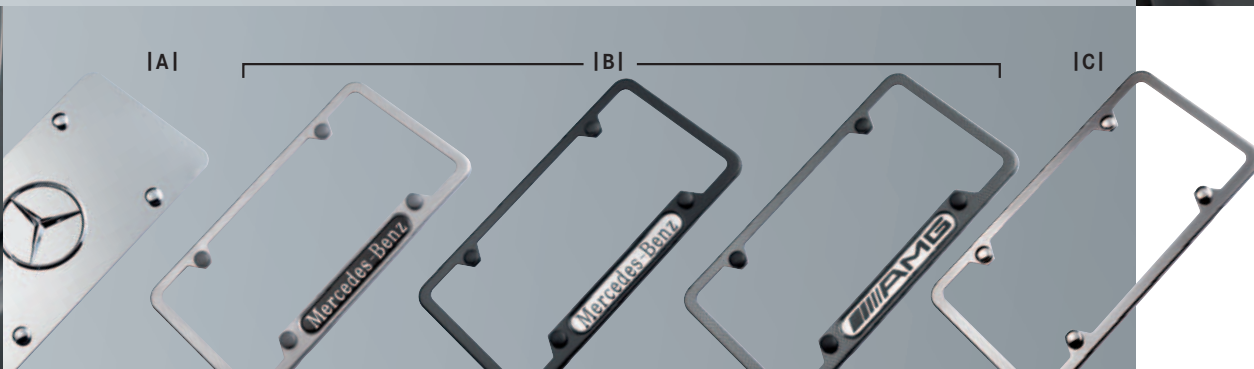
Choose from several quality stainless steel designs in an assortment of durable finishes to enhance the appearance of your license plates without blocking registration tags.

Design styles include: Mercedes-Benz frame, Slimline frame, AMG Logo frame, and Star Marque solid plate.

Please see INDEX for finish options for each design.

From the left to the right:

- A | Marque Plate** with star logo
- B | Nameplate Frames** Mercedes-Benz (Polished, Black Powder Coat) and AMG (Carbon Fiber)
- C | Slimline Frame** (Black Pearl)



Exterior Appearance
Interior Appearance



Wood/Leather Steering Wheel
burl walnut | black

The wood/leather steering wheels are also available in other colors to match the interior.

APPEARANCE

MERCEDES-BENZ NAVIGATION MAP UPDATE

More than a Map.™

Navigation Map Update

The Mercedes-Benz COMAND Navigation System¹ is a fully integrated system that combines Global Positioning System (GPS) technology with electronic mapping software to help you to plan trips, navigate detours and avoid getting lost. Global Positioning System (GPS) satellites continuously track your vehicle's location and the system relies on mapping information in order to give you the most accurate and efficient routes.

Notice however, how quickly the surroundings change: roads are added or diverted, restaurants open and close, hotels and hospitals are built, ATMs move. In fact, as much as 20 percent of the navigation data the system relies on changes every year. That is why Mercedes-Benz offers reliable, and updated navigation data to help get you where you need to go effortlessly. The Navigation Map Updates are available for purchase from your authorized Mercedes-Benz dealer.

The system can route you through more than 6.1 million miles of navigable roads in the United States and Canada. Just enter the address on the intelligent destination input screen, and the system takes over, guiding you audibly and with a clear and detailed 8" LCD map display. Do you need an idea where to go? The Navigation System also offers 1.7 million Points of Interest in 40 categories including ATMs, restaurants, hotels, airports, museums and more.

¹ Navigation system data includes the United States, Canada, Puerto Rico, Hawaii and Virgin Islands. Directional assistance provided only when GPS coverage is available. Maps do not cover all areas nor all routes within an area. While the navigation system provides directional assistance, the driver must remain focused on safe driving behavior, including paying attention to traffic and street signs. The driver should utilize the system's audio cues while driving and should only consult the map or verbal displays once the vehicle has been stopped in a safe place. See your authorized Mercedes-Benz dealer for availability and details.





[1]



[2]

Media Interface

The Media Interface² allows you to connect your audio devices to the interface located in the vehicle's glovebox. The Media Interface comes standard with two cables, an iPod connector [1] and a universal AUX input connector³. A non iPod USB cable [2] is available at your Mercedes Benz dealer, which will connect select⁴ USB sticks or media players with a USB port.

The audio output can be selected and controlled through the existing audio system in your vehicle. The current status of your audio device will also be displayed in the vehicle instrument cluster allowing you to keep your attention on the road.



[11]

*Navigation Map Update
Media Integration*



[12]

² Factory option.

³ Control of devices connected via AUX is limited to volume control.

⁴ For a list of compatible devices, please visit <http://www.mbusa-mobile.com>



SD Memory Card⁵

Listen comfortably to your music utilizing the SD-Card slot of your COMAND system. The Plug & Play system in the COMAND immediately recognizes your SD-Card and supports MP3-, WMA-, and ACC-Files.

⁵ Capacity: 2 GB
Read speed: 12.5 MB/s
Write speed: 5.5 MB/s



ENTERTAINMENT
& COMMUNICATION



Ski & Snowboard Rack, Deluxe

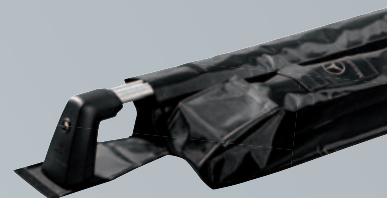
This rack holds up to six pairs of skis or four snowboards and features a pull-out function that makes it easier for loading and unloading without the need to reach across the roof of the car. Requires Roof Rack Basic Carrier (sold separately).

Roof Rack Basic Carrier

Our basic carrier is an essential component for attaching a wide assortment of items to the top of your S-Class. After easy installation, you can securely attach bicycles, ski and snowboard racks, or a cargo container. (Racks and containers sold separately.)

Basic Carrier Storage Bag

Protect your Roof Rack Basic Carrier in this nylon bag when not attached to your S-Class.



| LARGE |

| SMALL |

| MEDIUM |

Roof Cargo Containers

Create additional space for sports equipment and luggage with one of our aerodynamic, high-quality roof containers designed to nicely complement your S-Class.

Constructed of lightweight, yet exceptionally durable, impact-tested thermoplastic material. Features pressurized struts for easy lid operation and a security lock. Comes in silver finish.

Small model holds 11.5 cubic feet. Medium model holds 14 cubic feet. Large model holds 16 cubic feet. All models have a maximum load capacity of 110 lbs. Requires Roof Rack Basic Carrier (sold separately).



Carrier Systems

Bicycle Rack

| For Roof Rack Basic Carrier |

This rack securely holds up to 3 bicycles and attaches to the Roof Rack Basic Carrier (sold separately).

Spiral Lock set available to help secure your bicycle (sold separately, not shown).

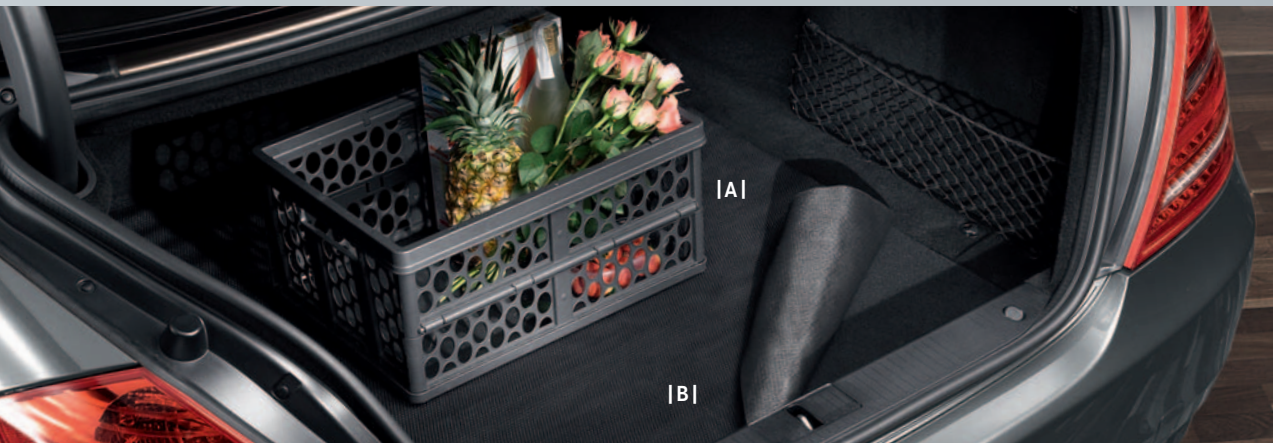


Luggage Set for Roof Cargo Container

This set of four sporty and functional bags is designed to fit inside our Small Roof Cargo Containers. The Luggage Set for the Large Roof Cargo Container additionally includes two bags for two pairs of skis each. Made from durable, weather-resistant materials. Shoulder straps included.



UTILITY & CARE



A | Collapsible Shopping Crate

Make your next trip to the market more convenient with this collapsible shopping crate. To save space, it folds flat when not in use. Dimensions folded: 2" x 13" x 18".

Cargo Net, Floor

Versatile and convenient, strong and durable nylon net help you to secure objects in the back of your S-Class.

B | Anti-Slip Mat

Reduces slipping of the items placed in the trunk. Tailored to perfectly fit dimensions of the cargo area. Made of oil resistant polyester.

Cargo Area Tray

Protect the floor of your trunk with this durable, easy-to-clean plastic insert with 2" sides. Formed to perfectly fit the trunk cargo area of your S-Class.

UVS-100™ Sunshade

Keeps the inside of your S-Class cool, while protecting the interior all year long from harmful UV rays. Practical and durable. Made of reflective fabric laminated to a foam core.



Mud Flaps

Designed to match the contours of the S-Class, these durable formed black plastic mud flaps will help protect your vehicle and followers from some loose road debris, stones and the corrosive effects of salty road spray. Comes primed, ready for painting. | Available in pairs for the front and the rear. Front Mud Flaps cannot be fitted with Sport or AMG package. |



Dust Cover

Protects your vehicle from dust, dirt and scratches in enclosed spaces such as a garage. The outside of the cover is made from breathable, hard-wearing synthetic material and the inside from a soft flannel-style fabric. The Mercedes-Benz star on the hood and the pale silver color ensure your Mercedes-Benz has a refined look, even when covered.

Car Cover

This UV-resistant 3-layer cover helps protect the finish of your S-Class from the elements. Made from breathable Noah® fabric, it combines an excellent fit with durable construction. (Lock and cable available separately.) | Not shown |

Cargo Management

UTILITY & CARE





BabySafe Plus Infant Seat (up to 29 lbs.)

Deep, molded rear-facing seat design provides extra protection and padding designed to help protect very young children up to 29 lbs. or 31 in. long. Features integrated head support, adjustable sun/wind canopy, comfortable 3-position carry handle, and variable recline angle adjustment. Light grey fabric cover is removable for washing. Can be used in the vehicle with or without the base. Approved for use in commercial aircraft. Weighs less than 8 lbs. This seat is LATCH⁶ and BabySmart⁶ compatible with provided LATCH belt⁶.



DUO Plus Toddler Seat (20-40 lbs.)

Designed to afford excellent protection for children approximately 1 to 4 years of age. Features include single-handed adjustment to change from the upright position to the reclined and sleeping positions, height-adjustable shoulder belt, back area ventilation channels, and an additional tether for securing the head section. Fabric cover is removable for washing. This seat is LATCH⁶ and BabySmart⁶ compatible.



KID Booster Seat (40-79 lbs.)

Any child who has outgrown the Toddler seat should be properly secured in a booster seat until he or she is at least 57" tall. KID Booster seat features a height and angle-adjustable backrest and headrests that can be positioned for comfort. Integrated belt guides on the sides help to keep the lap belt from sliding over the child's abdomen where it could cause injury in an accident. Fabric cover is removable for washing. This seat is BabySmart⁶ compatible.



⁶ Please consult your owner's manual or dealer for proper installation of your child seat.

BabySmart/OCS Safety Information: Most Mercedes-Benz vehicles from MY 1998 through 2003, select models from 2004 through 2006, and current S-Class vehicles are equipped with BabySmart™. Mercedes-Benz vehicles equipped with BabySmart™ have a device that recognizes the presence of BabySmart™-equipped child seat when properly installed in the front passenger seat and deactivates the passenger front air bag (check your vehicle's Operator's Manual or labels located on the sides of your dashboard to verify).

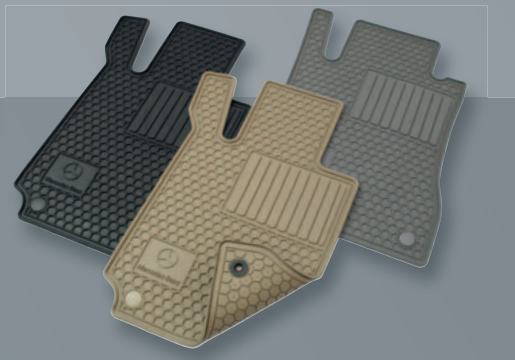
All current Mercedes-Benz models are equipped with the Occupant Classification System (OCS) (with exception of the S-Class) which is designed to turn off the front passenger's front airbag when the system senses the weight of a typical child 12 months old or less plus the weight of a standard child restraint. See vehicle's operators manual for important additional information on this system and further information regarding the transportation of children heavier than a typical 12 month old.

All Mercedes-Benz child safety seats meet or exceed U.S. Department of Transportation standards. They are also suitable for use in older vehicles that do not have integrated LATCH (Lower Anchors and Tethers for Children) attachment points. Visit the National Highway Traffic Safety Administration's website at <http://www.NHTSA.gov> for additional information about child safety seat laws and proper use.



Coat Hanger⁷

Robust coat hanger made from chromed metal and plastic. Easy to attach to front head rests. The ideal way to transport clothing without creasing them. (For safety, please remove when not in use.)



All-Season Floor Mats

These custom designed rubber floor mats are a great way to keep the carpet in your S-Class in top condition. The honeycomb design helps trap water, mud, snow and salt. Easy to clean. Four mats per set. Available in black, grey or beige.



Exterior Car Care Kit

Clean and protect your Mercedes-Benz with the superior, specially formulated products in our exclusive Exterior Car Care Kit. Includes Car Shampoo, Light-Alloy Wheel Cleaner with brush, Car Sponge and a Car Care Cloth, all neatly packed into a Mercedes-Benz Leisure Bag.



Battery Trickle Charger

For those extended periods when your S-Class will not be used, this charging device will help ensure that your battery is fully energized when you need it.



Interior Car Care Kit

Keep the interior of your Mercedes-Benz looking its best with the superior, specially formulated products in our exclusive Interior Car Care Kit. Includes Cabin Care Spray, Glass Cleaner, Auto Glass Sponge and a Car Care Cloth, all neatly packed into a Mercedes-Benz Leisure Bag.



A | Leather Chamois

Soft, pliable and absorbent leather to gently wipe away water without leaving streaks or water marks on your S-Class.

B | Sheepskin Wash Mitt

Thick, 100% Merino wool pile helps apply car shampoo, capture dirt and grime, and reduce paint surface scratches. Large shape and elasticized wrist comfortably accommodate all hand sizes.

*Child Safety Seats
Car Care
Car Utility*

UTILITY & CARE

⁷ Not in conjunction with factory option Rear-Seat Entertainment System (code 864).

Men's Sport Steel Bracelet

Stainless steel case and bracelet.
Black, rotating bezel and luminescent hands.
Swiss quartz movement with date display,
Available with white dial. Water resistant up
to 300 ft.

Men's and Women's Brushed Twill Cap

Brushed black cotton twill with relaxed fit.
Adjustable strap. Embroidered logo.

Vehicle Badge Key Ring

Chrome-covered brass replica
of vehicle badging.



Baguette Seatbelt Bag

Woven seatbelt bag with zip-top closure.
Logo medallion in lower corner.
Approx. 5.5" H x 12" L x 4" W.

**Stainless Steel Thermo Tumbler**

Patented vacuum technology maintains beverage temperature for hours. Stainless steel with rubber bottom and splash-resistant lid. Fits most Mercedes-Benz cup holders. Not intended for microwave or dishwasher.

LIFESTYLE COLLECTION

APPEARANCE

Item	P.	Part no.
Chrome Door Handle Inserts (Set of 4)	06	B6 688 1266
Illuminated Door Sills (Set of 4, beige)	06	B6 689 0177
Illuminated Door Sills (Set of 4, black)	06	B6 689 0176
Illuminated Door Sills (Set of 4, grey)	06	B6 689 0183
Licence Plate Frames		
AMG Frame (Black pearl coat stainless steel)	06	BQ 688 0091
AMG Frame (Carbon fiber faux stainless steel)	06	BQ 688 0099
AMG Frame (Polished stainless steel)	06	BQ 688 0087
Marque Plate with Star logo (Black powder coat stainless steel)	06	BQ 688 0059
Marque Plate with Star logo (Polished stainless steel)	06	BQ 688 0058
Mercedes-Benz Frame (Black pearl stainless steel)	06	BQ 688 0090
Mercedes-Benz Frame (Black powder coat stainless steel)	06	BQ 688 0088
Mercedes-Benz Frame (Polished stainless steel)	06	BQ 688 0086
Mercedes-Benz Frame (Satin stainless steel)	06	BQ 688 0100
Slimline Frame (Black pearl stainless steel)	06	BQ 688 0092
Slimline Frame (Black powder coat stainless steel)	06	BQ 688 0007
Slimline Frame (Polished stainless steel)	06	BQ 688 0005
Slimline Frame (Satin stainless steel)	06	BQ 688 0101
Light-Alloy Wheels		
19" 5-Double-Spoke Wheel (titanium silver, high-sheen) Wheel Size: 8.5 J x 19 ET 43, Tire Size: 255/40 R19 XL Wheel Size RA: 9.5 J x 19 ET 43, Tire Size: 275/40 R19	05	B6 647 4556 B6 647 4557
20" 5-Spoke Wheel (titanium silver, high-sheen) Wheel Size: 8.5 J x 20 ET 43, Tire Size: 255/35 R20 Wheel Size RA: 9.5 J x 20 ET 43, Tire Size: 275/35 R20	05	B6 647 4554 B6 647 4555
20" 2-Tone Multi-Spoke Wheel (black, high-sheen) Wheel Size: 8.5 J x 20 ET 43, Tire Size: 255/35 R20 Wheel Size RA: 9.5 J x 20 ET 43, Tire Size: 275/35 R20	04	B6 647 4529 B6 647 4530
Tire Valve Stem Caps (AMG)	05	BQ 640 8127
Tire Valve Stem Caps (Black)	05	BQ 640 8126
Tire Valve Stem Caps (Silver)	05	BQ 640 8128
Trunk Handle (Polished Stainless Steel)	06	BQ 657 0004
Trunk Handle (Satin Stainless Steel)	06	BQ 657 0034

ENTERTAINMENT & COMMUNICATION

Item	P.	Part no.
Media Interface USB Cable	09	B6 782 4528
Navigation Map Update	08	see dealer
SD Memory Card (2 GB, COMAND APS)	09	B6 782 3973

APPEARANCE	P.	Part no.
Trunk Handle – with Mercedes-Benz laser-etching (Polished Stainless Steel)	06	BQ 675 0035
Trunk Handle – with Mercedes-Benz laser-etching (Stainless Steel)	06	BQ 675 0036
Wheel Hub Inserts (Classic Star & Laurel design in black)	05	B6 647 0201
Wheel Hub Inserts (Classic Star & Laurel design in blue)	05	B6 647 0210
Wheel Hub Inserts (Sterling silver with chrome Three-Pointed Star)	05	B6 647 0206
Wheel Hub Inserts (Titanium silver with chrome Three-Pointed Star)	05	B6 647 0203
Wheel Locks	05	B6 647 0156
Wood/Leather Steering Wheel (burl walnut, beige)	07	see dealer
Wood/Leather Steering Wheel (burl walnut, black)	07	see dealer
Wood/Leather Steering Wheel (burl walnut, grey)	07	see dealer

UTILITY & CARE

Item	P.	Part no.
All-Season Floor Mats (Beige)	15	BQ 668 0675
All-Season Floor Mats (Black)	15	BQ 668 0674
All-Season Floor Mats (Grey)	15	BQ 668 0676
Anti-Slip Mat	12	B6 768 0061
Basic Carrier Storage Bag	10	A000 890 0111
Battery Trickle Charger	15	B6 754 2029
Bicycle Rack (for Roof Rack Basic Carrier)	11	A000 890 0293
Car Cover	13	BQ 660 0080
Cargo Area Tray	12	B6 668 0029
Cargo Net, Floor	12	B6 766 0108
Child Safety Seat BabySafe Plus Infant (up to 29 lbs.)	14	B6 686 8214
Child Safety Seat DUO Plus Toddler (20-40 lbs.)	14	B6 686 8219
Child Safety Seat KID Booster (40-79 lbs.)	14	B6 686 8310
Coat Hanger	15	A000 814 0132
Collapsible Shopping Crate	12	B6 647 0995
Dust Cover	13	B6 688 5007
Exterior Car Care Kit	15	A211 986 0100
Interior Car Care Kit	15	A211 986 0000
Leather Chamois	15	BQ 600 0010
Luggage Set for Roof Cargo Container (Small)	11	A000 890 0411
Luggage Set for Roof Cargo Container (Large)	11	A000 890 0511
Mud Flaps (Set front)	12	B6 652 8232
Mud Flaps (Set rear)	12	B6 652 8255
Roof Cargo Container (Small)	11	A000 840 1562
Roof Cargo Container (Medium)	11	A000 840 1662
Roof Cargo Container (Large)	11	A000 840 1862
Roof Rack Basic Carrier	10	B6 781 2111
Sheepskin Wash Mitt	15	BQ 600 0005
Ski Bag (for inside)	-	A000 846 0806
Ski & Snowboard Rack, Deluxe	10	B6 685 1703
Ski & Snowboard Rack, Standard	-	B6 685 1702
Ski Rack Insert for Roof Cargo Container (Small)	-	A000 840 4718
Ski Rack Insert for Roof Cargo Container (Large)	-	A000 840 4818

LIFESTYLE COLLECTION

Item	P.	Part no.
Baguette Seatbelt Bag	17	A961 999 5480
Men's Brushed Twill Cap	16	A962 999 0092
Men's Sport Steel Bracelet	16	A961 999 0043
Stainless Steel Thermo Tumbler	17	A950 999 0504
Vehicle Badge Key Ring	16	B6 695 7506
Women's Brushed Twill Cap	16	A962 999 0091

UTILITY & CARE

	P.	Part no.
Spiral Lock for Bicycle Rack	11	B6 685 1705
Spiral Lock for Bicycle Rack (Set of 2)	11	B6 685 1706
Spiral Lock for Bicycle Rack (Set of 4)	11	B6 685 1707
UVS-100™ Sunshade	12	BQ 667 0023

Mercedes-Benz USA, LLC
One Mercedes Drive
Montvale, NJ 07645
1-800-FOR-MERCEDES
MBUSA.com

© 2009 Mercedes-Benz USA, LLC
A Daimler Company

All illustrations and specifications contained in this brochure are based on the latest product information available at the time of publication. Actual product offerings may vary from those shown or may be subject to availability delays or discontinuance. Mercedes-Benz reserves the right to make changes at any time, without notice, in colors, materials, equipment, specifications and models. Any variations in colors shown are due to reproduction variations of the printing process. Illustrations may include test situations. Some vehicles may be shown with non-U.S. equipment. Vehicles are shown with optional equipment.

Unsecured cargo can become hazardous in a collision. Always secure cargo using the floor-mounted tie-down hooks. Cargo nets and organizers are not intended to prevent objects of excessive weight and bulk from sliding or rolling in the event of a collision or sudden stop. Always drive with caution when driving with cargo.

Certain accessories may require professional installation and/or additional components to complete the installation in your vehicle. Please consult your authorized Mercedes-Benz dealer for specific information about automotive accessories. Speak with a representative at your local authorized Mercedes-Benz dealership for current pricing on Genuine Mercedes-Benz Accessories. Visit accessories.mbusa.com to shop online or call 1-800-FOR-MERCEDES (367-6372) to obtain the Lifestyle Collection catalog.

Printed in the Federal Republic of Germany
ACC-09-V2211-20000 (08/09)