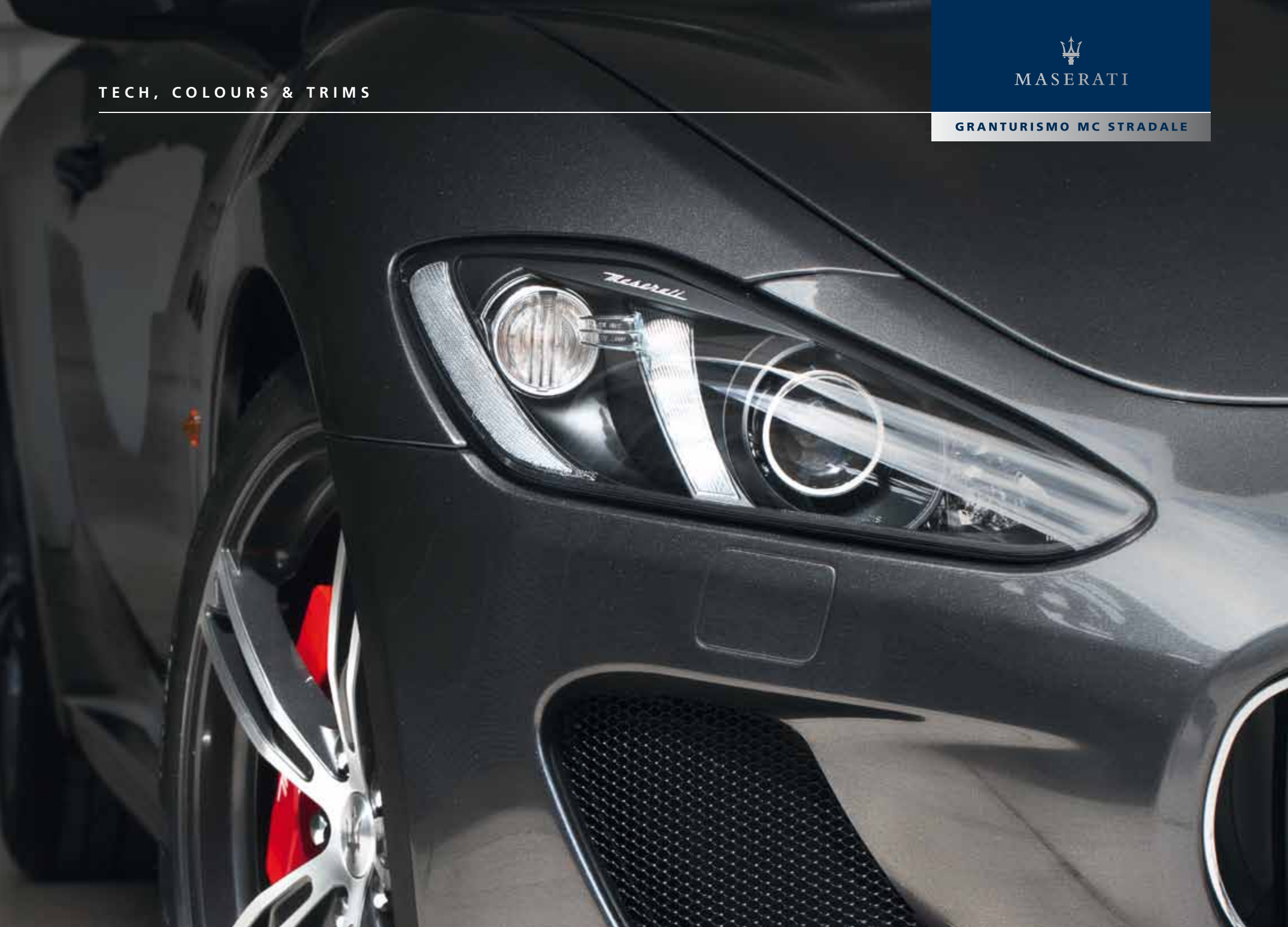


TECH, COLOURS & TRIMS



MASERATI

GRANTURISMO MC STRADALE





Maserati

GT 460 MC



INTRODUCTION .....	2
TECHNICAL DATA .....	4
CHASSIS .....	6
INTERIOR .....	8
RIMS .....	10
BRAKE CALLIPERS .....	12
STANDARD EQUIPMENT .....	14
OPTIONAL .....	16

## THE PERFECT BLEND OF TRACK AND ROAD

Designed to bring the valuable track know-how of Maserati Corse to the road, the GranTurismo MC Stradale now reaches new heights in the marque's ceaseless search for the ideal blend of luxury and uncompromising performance.

While retaining all the characteristics of a fast, powerful, lightweight road-going racing car in its genes, the new GranTurismo MC Stradale delivers the same levels of comfort and spaciousness as the other models in the GranTurismo range. For the first time, a restyled four-seater interior is combined with the racing-derived exquisite aerodynamic lines and high-tech solutions.



# TECHNICAL SPECIFICATIONS

## DIMENSIONS AND WEIGHTS

Length	4933 mm
Width	1903 mm
Height	1343 mm
Wheelbase	2938 mm
Front track	1588 mm
Rear track	1571 mm
Front overhang	926.5 mm
Rear overhang	1067 mm
Turning circle	10.5 m
Boot capacity	260 l
Fuel tank capacity	90 l
Dry weight	1700 kg
Kerb weight	1800 kg

## TYRES

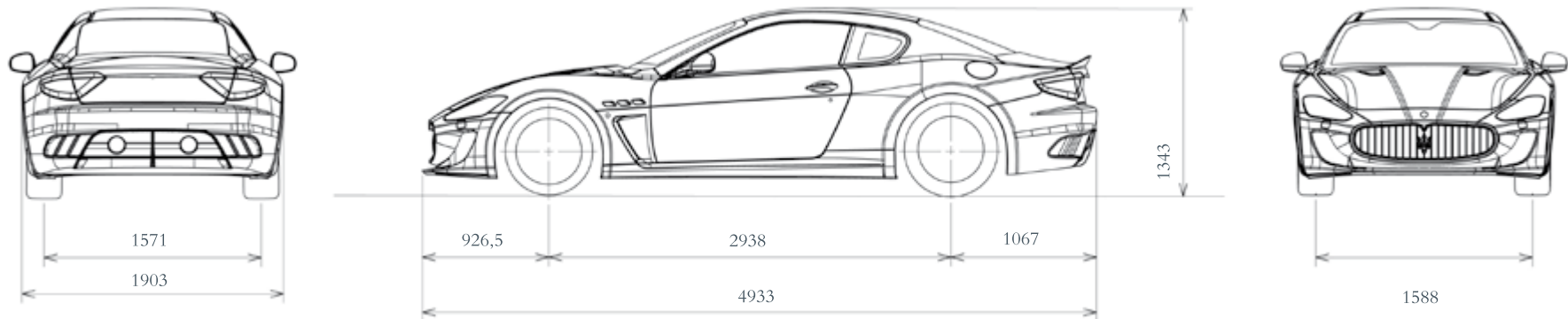
Front	255/35 ZR 20
Rear	295/35 ZR 20

## ENGINE

Number of cylinders and layout	V8
Displacement	4,691 cc
Bore	94 mm
Stroke	84.5 mm
Compression ratio	11:1
Max. power output	460 CV (338 kW)
Engine speed at max. power output	7,000 rpm
Peak torque	520 Nm (53 kgm)
Engine speed at peak torque	4,750 rpm

## PERFORMANCE

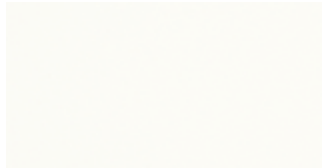
Maximum speed (km/h)	303 (285 mph)
Acceleration 0 to 100 km/h	4.5 s
Fuel consumption - combined cycle (l/100km)	14.4 (19.6 mpg)
Fuel consumption - urban cycle (l/100km)	22.7 (12.4 mpg)
Fuel consumption - extra urban cycle (l/100km)	9.7 (29.1 mpg)
CO <sub>2</sub> emissions - combined cycle (g/km)	337



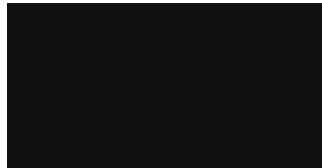


# CHASSIS

## SOLID PAINTS / METALLIC PAINTS



Bianco Eldorado



Nero



Grigio Touring



Blu Sofisticato



Grigio Granito



Rosso Trionfale



Nero Carbonio



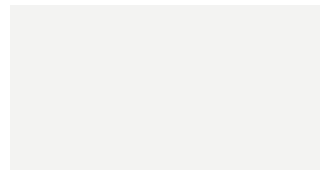
SPECIAL PAINTS



Giallo Granturismo



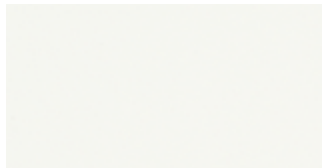
Blu Mediterraneo



Bianco Birdcage



Rosso Mondiale



Bianco Fuji



Grigio Lava

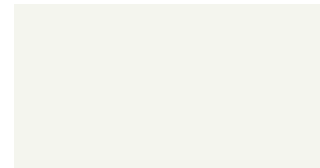
MATT PAINTS



Blu Mediterraneo



Grigio Granito



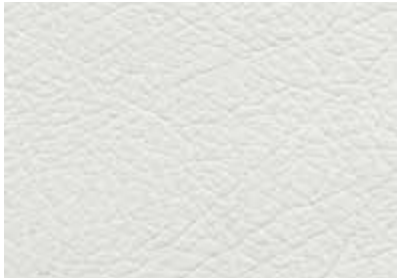
Bianco Fuji

# INTERIOR

## LEATHER COLORS



Pearl Beige



Bianco Pregiato



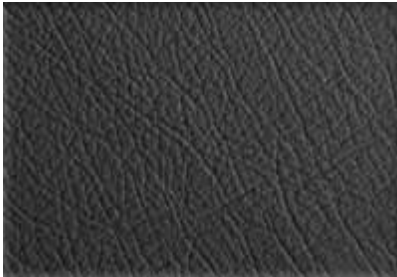
Sabbia



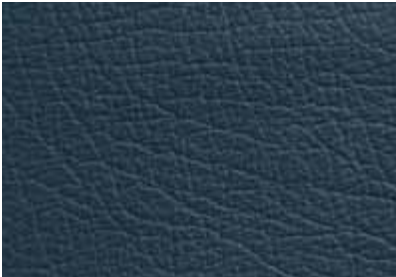
Cuoio



Marrone Corniola



Grigio Chrono



Blu Profondità



Rosso Corallo

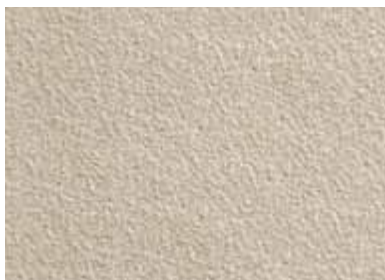


Bordeaux



Nero

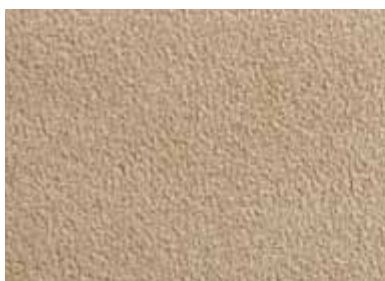
ALCANTARA®



Pearl Beige



Nero



Beige

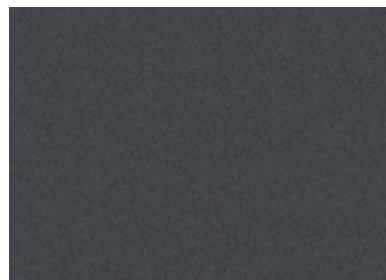


Blu Trofeo



Grigio

INTERIOR FINISHES



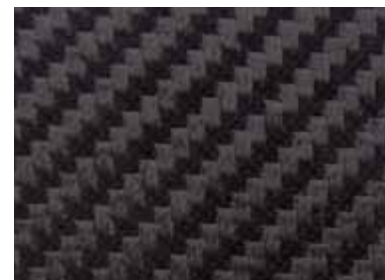
Nero Soft



Black Piano



Blu Lacque



Fibra di Carbonio



TitanTex



# RIMS



TROFEO SILVER  
Forged

Dimensions: 20"  
Front tire: 8,5J x 20"  
Rear tire: 10,5J x 20" post



TROFEO DIAMANTATO  
Forged

Dimensions: 20"  
Front tire: 8,5J x 20"  
Rear tire: 10,5J x 20" post



MC-DESIGN GRAFITE  
Matt

Dimensions: 20"  
Front tire: 8,5J x 20"  
Rear tire: 10,5J x 20" post



MC-DESIGN TITANIO  
Polished

Dimensions: 20"  
Front tire: 8,5J x 20"  
Rear tire: 10,5J x 20" post



NEPTUNE  
Polished

Dimensions: 20"  
Front tire: 8,5J x 20"  
Rear tire: 10,5J x 20" post



## BRAKE CALLIPERS



RED



BLACK



TITANIUM



YELLOW





# STANDARD EQUIPMENT

4.71V8 engine; maximum power 460 CV; maximum torque 520 Nm

---

20-inch Silver Trofeo design forged alloy wheels

---

Specific high performance tyres

---

Brake callipers painted Titanium

---

Carbon fiber hood in body color; interior side in matt carbon fiber

---

CCM (Ceramic Composite Material) front 380 mm perforated brake discs with 6-piston calipers; rear 360 mm drilled brake discs, 4-piston calipers

---

Double wishbone single damping suspension with stiffer set-up and high lowered ride

---

Shadowline exterior trim

---

Dual powered/heated exterior mirrors

---

Sport exhaust with dual, centrally positioned exhaust pipes in chrome plated stainless steel with electronically controlled bypass valves controlled via "SPORT/RACE" buttons

---

Front grille with black vertical grille bars, trident with red accents and black mesh side port hole grilles

---

Front spoiler integrated with aerodynamic undertray

---

Lightweight boot lid construction, with remote key unlocking

---

Additional lip spoiler in deck lid

---

Headlights - Black background, white side marker reflector

---

Bi-xenon headlights with headlights washing system and integrated DRL led lights

---

Taillamps with LED technology and fumè look lens

---

Folding front armrest with illuminated storage compartment

---

Sports seats with integrated headrests, front and rear

---

Poltrona Frau® leather and perforated Alcantara® upholstery

---

Interior trim in Nero Soft

---

Trofeo design "Active Shifting" gear shift shift paddles

---

Aluminium sport pedals

---

Dashboard mounted, Maserati-design clock

---

Fabric headliner

---

Smoker's package

---

Three-spoke, multifunction, sports steering wheel in black leather & coloured Alcantara®

---

Trident logo stitched on head restraints

Two individual front full size cup-holders

---

Alarm system (perimeter and volumetric sensing, anti-lift device, electronic immobilizer)

---

Automatic headlamp activation

---

Cruise control

---

Dual zone automatic climate control

---

Electric opening assist for boot lid and doors

---

Electronic Parking Brake (EPB)

---

Rear parking sensors

---

Maserati Hi-Fi sound system

---

Maserati Multi Media System with 7" in dashboard screen (navigation system, RDS tuner, single CD player, 30 GB hard disc drive, voice control, bluetooth, USB and AUX-IN)

---

Power-assisted steering, with speed sensitive feature

---

Rain sensor

---

Remote key (on/off alarm system, lock/unlock doors, unlock boot lid)

---

MC-design sport instrument cluster

---

Digital RPM indicator

---

SPORT and RACE mode settings via dashboard buttons (affecting gear change, accelerator response, MSP system, exhaust bypass valves and instrument display) MC-R gearshift available in RACE mode

---

Tyre sealing compound and electric air compressor

---

Air-bag system (front, side and window airbags)

---

Front seat belts with pre-tensioners and load limiters; rear seat belts with load limiters

---

Maserati Stability Program

---

Adaptative light control system

---

Steering wheel with manual height and reach adjustments

---

Automatically dimming rearview interior mirror

# OPTIONAL

## WHEELS & CHASSIS

20-inch MC-design wheels - shiny Titanium finishing (8.5J x 20" front/10.5J x 20" rear)  
20-inch MC-design wheels - matt Graphite finishing (8.5J x 20" front/10.5J x 20" rear)  
20-inch Trofeo-design wheels - Machine Polished finishing (8.5J x 20" front/10.5J x 20" rear)  
Brake callipers painted Black  
Brake callipers painted Yellow  
Brake callipers painted Red  
Space saver spare wheel

## EXTERIOR

Metallic paint  
Special paint  
Matt finish paint  
Pearlescent paint: Bianco Fuji  
Pearlescent paint: Bianco Birdcage  
Pearlescent paint: Grigio Lava  
Car cover

## INTERIOR

Full leather interior (steering wheel and gear moulding in black leather)  
Alcantara headlining  
"TitanTex" trim for selected interior details  
High gloss colour for selected interior details  
Three sport spoke steering wheel in black leather  
Steering wheel and gear pod in coloured leather (available only in combination with full leather interior)  
Steering wheel in Alcantara® and coloured leather  
Stitching colour upon request (steering wheel excluded)  
Stitching colour upon request for Alcantara® areas  
Upper/lower dashboard and rear shelf colour upon request  
Carpet piping colour upon request

Interior carpet colour upon request  
Door entry guards in composite fibre (TitanTex)  
Perforated leather (squab and backrest centres)  
Dual-colour interior  
Seat backrest cover same colour as the seats

## COMFORT & FUNCTIONALITY

Automatically dimming exterior mirrors  
HomeLink - Garage door opener  
Bose Surround Sound System  
Comfort pack front seats (heating, driver's seat memory, power steering column with easy entry/exit function)  
Tyre Pressure Monitoring System (TPMS)

## MC SPORT LINE

Aerodynamic package in carbon fibre (rear lip spoiler in carbon fibre, side mirrors in carbon fibre, doors handles in carbon finish)  
Interior carbon package (carbon finish on dash and door panels trim strips, upper door trim strip in carbon fibre)  
Interior carbon package - evolution I (door entry guards in carbon fibre with "MC Sport Line" logo, centre console in carbon fibre)  
Interior carbon package - evolution II (paddles shift in carbon fibre, instrument surround in carbon fibre)  
Electro-actuated switch controls in carbon fibre  
Steering wheel in carbon finish and black leather  
Steering wheel in carbon finish/coloured leather  
Seat backrest cover in carbon fibre  
Carbon fibre hood (carbon look)  
MC design aluminum sports pedals (incl. foot rest)  
20-inch Gloss Black Neptune-design alloy wheels (8,5J x 20" front/10,5J x 20" rear)





[WWW.MASERATI.COM](http://WWW.MASERATI.COM)

[WWW.MASERATIGRANTURISMOMCSTRALE.COM](http://WWW.MASERATIGRANTURISMOMCSTRALE.COM)

MASERATI SPA · VIALE CIRO MENOTTI, 322 · 41121 MODENA · ITALIA