

Visit us online to create your ideal INFINITI.

[www.infiniti.ca](http://www.infiniti.ca)

Join our community, and get the latest info.



Always wear your seat belt, and please don't drink and drive. Printed in September 2016.  
Catalogue number 99999-17INQ60E. © 2016 INFINITI A Division of Nissan Canada Inc. INFINITI Model  
Names are Nissan trademarks. ♻️ This brochure is printed on recyclable paper.  
INFINITI encourages you to recycle it or perhaps pass it on to a friend.

2017  
**Q60**



  
**INFINITI.**  
EMPOWER THE DRIVE™



INFINITI

# EMPOWER THE DRIVE

We are like you. We push ourselves beyond our comfort zone. While others might be content with making better machines, we are driven to go beyond—to design cars that push human potential. We build technology to enhance your senses, striking design that demands a response, and performance that makes you feel more alive. Prepare to experience the road as it was intended.



## INFINITI Q60

**Empower the drive with performance.** We gave it daring curves and a powerful stance. The exhilarating performance of a twin-turbocharged 400-horsepower V6 engine.<sup>1</sup> And the unmatched responsiveness of the world's first digitally adaptive handling system.<sup>1</sup> Q60. Redefine the drive.





## EXTERIOR DESIGN

# EVERY LINE SHAPES AN EMOTION

Our philosophy—and the future of INFINITI design—takes stunning shape on the all-new Q60. Emotion is boundless. So is daring design.



**ATHLETIC STANCE** Large 19-inch alloy wheels<sup>1</sup> make your intentions known. Add all-season performance run-flat tires<sup>1</sup> and the visual message is clear: The Q60 is meant to perform.

**IMPRESSION AMPLIFIED** INFINITI signature cues express a unique design language. The top span of the double-arch grille represents the profile of a bridge and the lower span portrays its reflection in the water. Eye-inspired LED headlights give a provocative stare, while the crescent-shaped C-pillar curves forward, punctuating the exterior with dynamic detail.

**LOW PROFILE** The dynamic proportions make a purpose-built statement: Low enough to hug the ground. Wide enough to deliver impressive stability.

**AERODYNAMIC ADVANTAGE** A .28 coefficient of drag says as much time has been spent making this sports coupe invisible to the wind as it is striking to the eye. This is evident with zero-lift aerodynamics in the front and rear, plus an Active Grille Shutter<sup>1</sup> that stays closed to lower drag at speed but opens if additional cooling is needed.

**DEEP DRAMATIC CREASES** Using a revolutionary 3D stamping process that allows for aggressive creases and deep curves, the high character lines capture your imagination. Engineers even redesigned the door hinges so the leading edge tucks into the fender to provide dramatic sculpting.





## INTERIOR DESIGN

# A BODY OF ART CRAFTED EXPRESSLY FOR YOU

Tailored to accentuate the human form, the cabin celebrates the driver with bold thinking and fine modern materials.



**VISUAL REWARD** With Fine Vision electroluminescent gauges, see how quickly the needle moves under any lighting conditions. The contrast delivers information clearly, helping to improve visibility at a glance.

**FLEXIBLE DOORSTOP** Every time you get in, you'll appreciate the thoughtfulness of the segment-exclusive flexible doorstop. Designed to stay open between set positions on level surfaces, you can easily enter and exit without worrying about the door springing back on you.

**SPORT SEAT DESIGN** Crafted to blend comfort with science, the all-new driver's seat performs on a higher design level. Feel the sport-inspired difference. Deep bolsters help hold you in place. Zero gravity research led to a form and cushioning seat design that can help reduce fatigue on long drives.<sup>1</sup>

**TAILORED AND ACCENTED** Craftsmanship is obvious in the laser-cut holes, which permit tighter stitching and more dynamic free-flowing shapes. Around the centre console and throughout the interior, an available Silver Optic Fibre trim offers an upscale modern look.

**NATURAL GRIP** Your hands move in unique ways, and a steering wheel should reflect that. This one does. Sport-inspired thumb grips and paddle shifters are just the right shape for performance driving.<sup>1</sup>





# ACCELERATE YOUR POTENTIAL AND PERFORMANCE

This is power through innovation, where the forces of advanced technology blow past limits. Three turbo engines, including a first-ever INFINITI twin-turbo, culminate in jaw-dropping performance.<sup>1</sup>



**SIGN OF PERFORMANCE** At INFINITI, performance is more than delivering a heightened driving experience. We believe it should unleash a more dynamic driver in you. And now, a shared passion can be boldly displayed by the letter S. Whether it is more intense power, tuning or design, the INFINITI Sport model represents something special.



**RED SPORT 400** The Red "S" badge represents the highest level of performance and power in its lineup. In the Q60 Red Sport 400, that means a 3.0L V6 twin-turbo 400-HP engine.<sup>1</sup>



400  
HP

9.2  
L/100 KM<sup>2</sup>

**ALL-NEW 3.0-LITRE V6 TWIN-TURBO 400-HP ENGINE** With the new V6 twin-turbo, torque builds quickly and power pours out like an endless flood. Acceleration is instant and feels limitless. Direct Injection Gasoline (DIG), water-cooled air charging, a turbo speed sensor, and advanced turbine blade design make for quicker response and a higher peak.<sup>1</sup>

300  
HP

8.8  
L/100 KM<sup>2</sup>

**ALL-NEW 3.0-LITRE V6 TWIN-TURBO 300-HP ENGINE** Tap into 300-HP and 295 lb-ft of torque, faster than you ever imagined. A variant of the new V6 propels you beyond measure, courtesy of a lightweight aluminum engine, friction-reducing technologies, and new cooling and valve timing systems.<sup>1</sup>

208  
HP

8.5  
L/100 KM<sup>2</sup>

**2.0-LITRE I4 TURBOCHARGED ENGINE** Feel the rush of a turbo. Experience the fuel economy of a four-cylinder. With optimal power and efficiency, you glide forward confidently. The turbo spools quickly to produce 208 HP at 5,500 rpm and outputs a stirring 258 lb-ft of torque.

**CLOSER THRILLS** All paddle shifters are not positioned equally. In the all-new Q60, paddle shifters are steering wheel-mounted instead of column-mounted for easy reach during aggressive cornering.<sup>1</sup>





## HANDLING

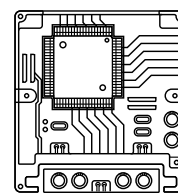
# AMPLIFY EVERY MOVE DIGITALLY

Unleash the full-performance potential—of the all-new Q60 and yourself—with the world's first pairing of digital steering and suspension.<sup>1</sup>

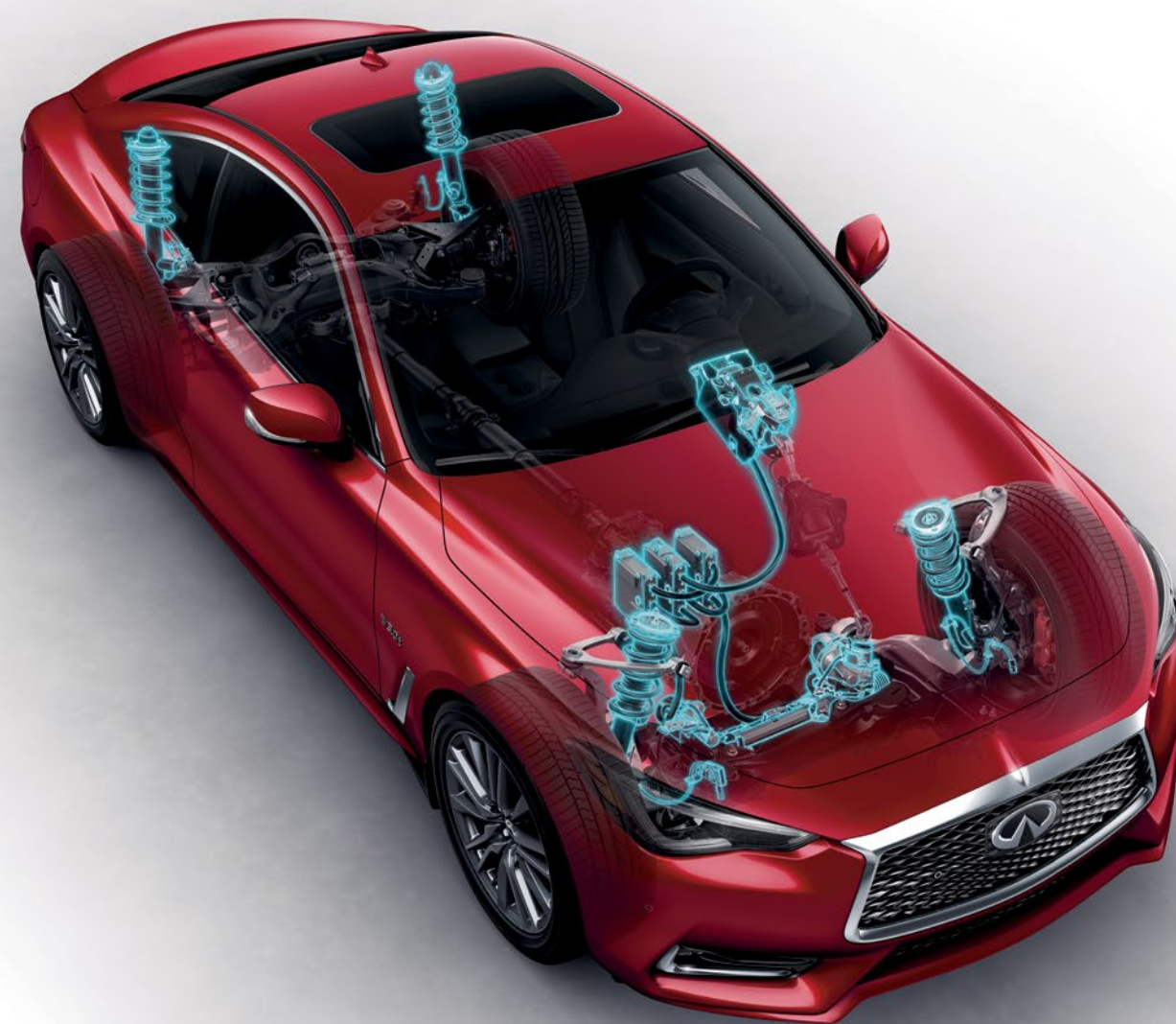


**STEER WITH ENHANCED PRECISION** When you turn the wheel, Direct Adaptive Steering® not only translates your input, it converts your intention into an electronic impulse. Since your steering is digitally processed, you get the response you want. Smooth. Quick. Precise. Every movement is a reaction to your command, tuned for a more natural connection.<sup>1</sup>

## FIRST DIGITALLY ADAPTIVE HANDLING SYSTEM



A performance car is engaging. An INFINITI is empowering. In the all-new Q60, you amplify your capabilities with a true 21st-century handling system.



**HANDLE WITH INSTANT ADAPTABILITY** The all-new Q60 recalibrates the balance between comfort and performance into something revolutionary. Change from comfort-biased to a dynamic ride with the push of a button, and release a highly personal and responsive experience. Without you doing a thing, Dynamic Digital Suspension continually adjusts to corners and road imperfections for lasting confidence.<sup>1</sup>

**CHOOSE YOUR DRIVE** With up to 336 customizable driver settings, the INFINITI Drive Mode Selector takes performance and control to a more refined level. Select between Standard, Snow, Eco, Sport, Sport+ and Personal modes. Then, further tailor your drive by tuning steering, engine and suspension inputs. The result is one that suits the moment and, more importantly, can be personalized exactly to your liking. Expand your experience beyond road conditions and preset factory settings.<sup>1</sup>



# MORE WAYS TO CARVE A TURN

Personalize your performance with a range of choices for steering and suspension. Grasp your freedom. Drive unconstrained, fully immersed in every moment.<sup>1</sup>



## 3 STEERING SYSTEMS

- (1) **DIRECT ADAPTIVE STEERING®** Today, the future is in your hands, and it's moving fast. At 1,000 adjustments a second, Direct Adaptive Steering® constantly fine-tunes your steering performance. Easy manoeuvrability at low speeds. Spirited driving on winding mountain roads. The system operates by digitally transmitting your steering input to the wheels for a smoother and quicker response. Unwanted vibrations are filtered out. Fewer steering corrections are required, giving you a strong feeling of confidence and ease.<sup>1</sup>
- (2) **RACK ELECTRONIC POWER STEERING (RACK EPS)** All-new for Q60, RACK EPS delivers a linear and secure experience. To help make steering easier, the system increases the steering effort as the yaw rate changes. Two modes, Standard and Sport, allow you to tailor the response to your preference.<sup>1</sup>
- (3) **HYDRAULIC ELECTRONIC POWER STEERING** The everyday ease of vehicle speed-sensitive steering comes standard with the Q60 2.0t AWD model. Steering effort decreases when squeezing into a parking spot or negotiating tight quarters at lower speeds.

## 2 SUSPENSION SYSTEMS

- (1) **DYNAMIC DIGITAL SUSPENSION (DDS)** You are the driver. Let the all-new Dynamic Digital Suspension (DDS) adapt to you. Enjoy a smooth ride when you want it or a more agile response when you demand it. New adaptive dampers change the focus based on your Drive Mode Selector choice. Switching between modes is instantaneous. So is the ability of DDS to constantly monitor chassis vitals like body roll, pitch and bounce rate. This is driver-centric performance for the digital age.<sup>1</sup>
- (2) **STANDARD SUSPENSION** With a double wishbone front and an independent multi-link rear suspension, you'll enjoy a smooth level ride. Handle every twist and turn with aplomb, thanks to shock absorbers that deliver a direct, linear feel with less road noise and vibrations. From now on, you are part of a dynamic team, where every S-curve belongs to you—and the all-new Q60.
- INTELLIGENT AWD** To enthusiasts, nothing matches the flat-out joy of mind-blowing acceleration and exceptional handling. But consider this: Intelligent All-Wheel Drive can send anywhere from zero to 50% of the power to the front wheels when you need it, and 100% to the rear wheels for sporty response when you don't. So you get all-wheel drive traction with sports car performance.





CONNECTIVITY

# IN TOUCH WITH YOUR CONNECTED WORLD

INFINITI InTouch™ makes your world flow. Your life is always moving, and INFINITI InTouch™ with Navigation and INFINITI InTouch™ Services seamlessly bring your world into your car. Stay ahead and in contact with voice, text, calendar, navigation and music.<sup>1,3</sup>



**THE LATEST FROM BOSE®** For those who demand a performance-focused sound system, the new Bose® Performance Series with Advanced Staging Technology delivers. Thirteen high-performance speakers, including multiple new 10" and 6 x 9" woofers and a lightweight silk dome tweeter achieve "live performance" precision. Revel in a wider and more precise soundstage, where the acoustics are always ideal.<sup>1</sup>



**PROPRIETARY DIGITAL SIGNAL PROCESSING** A recent Bose® innovation, Advanced Staging Technology utilizes advanced algorithms to dynamically direct music to their ideal locations within the cabin. Instruments and vocals have exceptional clarity. So from the driver's seat, you feel as if you're sitting in the front row at a concert.<sup>1</sup>

**IMPROVED AUDIO PERFORMANCE** Immerse yourself in an exhilarating sound experience. AudioPilot® 2.0 Noise Compensation Technology constantly monitors outside sounds and adjusts the music accordingly, while Centerpoint® 2.0 Surround Technology allows you to enjoy surround sound from CDs, MP3s and satellite radio.<sup>1</sup>



**A PREMIUM CONNECTION** Every time you get into the all-new Q60, experience a seamless connection with technology that responds like the technology you hold in your hand. Connecting your smartphone to INFINITI InTouch™ with Navigation and INFINITI InTouch™ Services<sup>1,3</sup> brings your world into your car. Hear text messages read to you. Listen to your playlists. Navigate unfamiliar streets or call your friends. Even when you're away from your vehicle, you're still connected through the InTouch Services companion app with features like Remote Engine Start/Stop<sup>4,5</sup> and Remote Door Lock/Unlock.

**EMPOWER YOUR TOUCH** The INFINITI Controller puts simple, intuitive control of your technology systems at your fingertips. It allows you to interact via the inputs most intuitive to you—turning ring, touch-screen, input buttons, and even steering wheel controls—responding to you rather than you adjusting to it.

**ADJUSTS TO YOU** INFINITI InTouch™<sup>1,3</sup> delivers an intuitive experience right from your driver's seat in the manner that best suits you. You can interact with the state-of-the-art system however you find easiest. The top screen can be operated by touch, steering wheel switches or the INFINITI Controller; it is primarily used for driving information and navigation. The bottom screen can be operated by touch and lets you manage the infotainment systems, such as audio and climate control.

**BLUETOOTH® STREAMING AUDIO** Turn your Bluetooth®-enabled smartphone into a source of music, and listen to your top playlists over the all-new Q60's audio system.<sup>6</sup>

**HANDS-FREE VERSATILITY** With the INFINITI Bluetooth® Hands-free Phone System<sup>6</sup> you can make and receive wireless calls using voice recognition. No fumbling. No need for a headset. Just press a button on the steering wheel.



## DRIVER AIDS

# EFFORTLESSLY EXTEND YOUR ABILITIES

Cruise smarter. See farther. Steer easier. View clearer. Respond faster. With available driver-enhancing technologies, you can now move with a new level of ease.

### CRUISE SMARTER

Set your desired speed and distance, and Intelligent Cruise Control (Full-Speed Range)<sup>1,7</sup> can automatically adjust your speed in slowing traffic. When traffic speeds resume, Intelligent Cruise Control can bring you back up to your preset speed and distance.

### RESPOND FASTER

High Beam Assist automatically dims your high beams as oncoming vehicles approach, then turns them back on when traffic clears.<sup>1</sup>

### SEE FARTHER

The Adaptive Front lighting System (AFS) improves visibility at intersections and around curves by sensing your steering and turning the headlights. Together with LED auto-leveling headlights, AFS helps you see not just ahead but around as well.<sup>1</sup>

### STEER EASIER

Working with Direct Adaptive Steering,<sup>®</sup> Active Lane Control<sup>1,8</sup> evaluates the road ahead and can automatically make small steering angle corrections due to uneven road surfaces or crosswinds.

### VIEW CLEARER

Gain a new perspective on what's around you. With the Around View<sup>®</sup> Monitor with Moving Object Detection,<sup>1,9</sup> four cameras and one virtual 360° view from above makes it easy to see and manoeuvre in even the tightest spaces. Peek around corners with confidence, thanks to a new front camera that looks out to the side with a sweeping near-180° view.

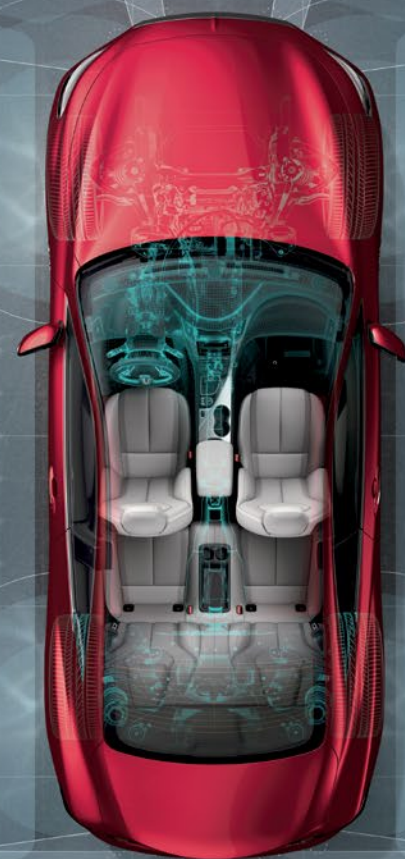




## SAFETY

# EFFORTLESSLY EXTEND YOUR AWARENESS

A unique combination of active and passive safety innovations enhance your ability to respond instinctively.<sup>1</sup>



**A SHIELD OF PROTECTION** The INFINITI Safety Shield<sup>®</sup> concept—our comprehensive approach to safety—layers technologies to help monitor conditions, help you avoid a collision and help protect you and your passengers if one occurs.<sup>1</sup>

**MORE CONFIDENT IN REVERSE** Backup Collision Intervention<sup>1,10</sup> helps increase your awareness. As you back up, the system warns you if approaching vehicles or large stationary objects are detected behind your all-new Q60, and it can help you avoid a collision by applying the brakes.

**RESPOND TO YOUR SURROUNDINGS** Forward Emergency Braking with Pedestrian Detection<sup>1,11</sup> can detect vehicles in the lane ahead of you. If deceleration is needed to help minimize a collision or even help prevent one, the accelerator pedal can be pushed up and the brakes can be applied. The system adds another dimension of security by also looking out for pedestrians that enter your vehicle's path.

**BRAKE CONFIDENTLY** The all-new Q60 braking system responds automatically to changing conditions with 4-wheel Anti-lock Braking System (ABS) and Electronic Brake force Distribution (EBD).

**SENSES WHERE YOU CAN'T SEE** The Blind Spot Warning and Blind Spot Intervention<sup>®</sup> Systems<sup>1,12</sup> use sensors to detect vehicles entering the blind spot area. First, a warning light will illuminate—then, if necessary, a brief steering input can be provided to help guide your all-new Q60 back to your current driving lane.

**RECOGNIZING DANGER** Predictive Forward Collision Warning<sup>1,13</sup> uses radar to enable your all-new Q60 to continuously monitor not only the vehicle directly ahead of you but also the vehicle in front of that one. If your all-new Q60 detects a potential risk, it provides an audible and visual alert.

**MAINTAIN YOUR LANE** The Lane Departure Warning and Lane Departure Prevention Systems<sup>1,14</sup> monitor lane markings and can help warn you if you start to drift. If the drift continues, the Lane Departure Prevention System can provide brief steering input to ease your all-new Q60 back towards the centre of your lane.

**STRONGER AND LIGHTER** Ultra high-strength steel is twice as strong as conventional steel and is built around you to enhance your safety in case of a collision.

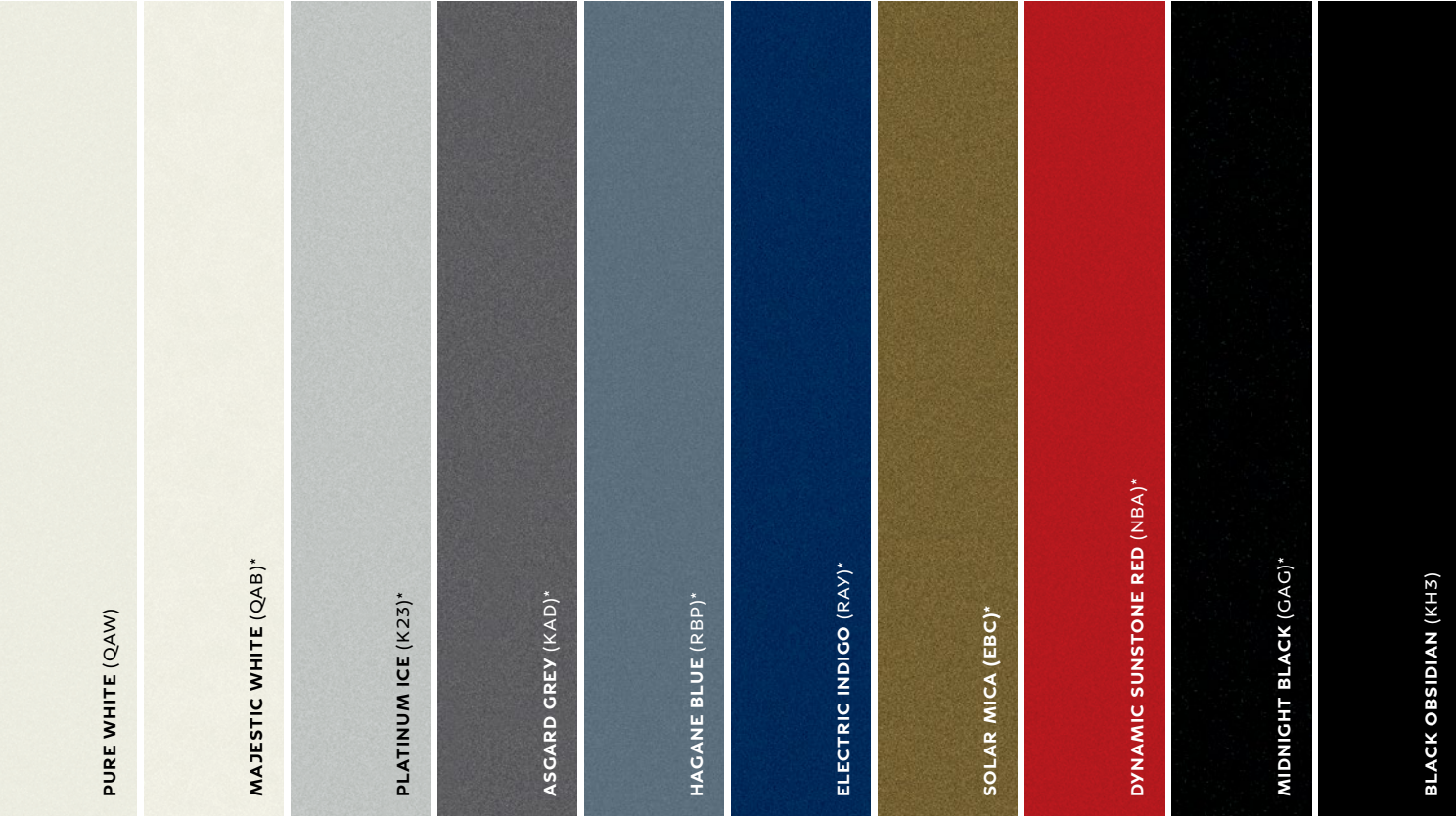
**ENHANCED PROTECTION** Based on the severity of the crash and seat belt usage, the INFINITI Advanced Airbag System adjusts inflation in the dual-stage front supplemental airbags. Also featured are front seat-mounted side-impact supplemental airbags and roof-mounted curtain side-impact supplemental airbags with rollover sensor.<sup>15</sup>





# MAKE IT UNIQUELY YOURS

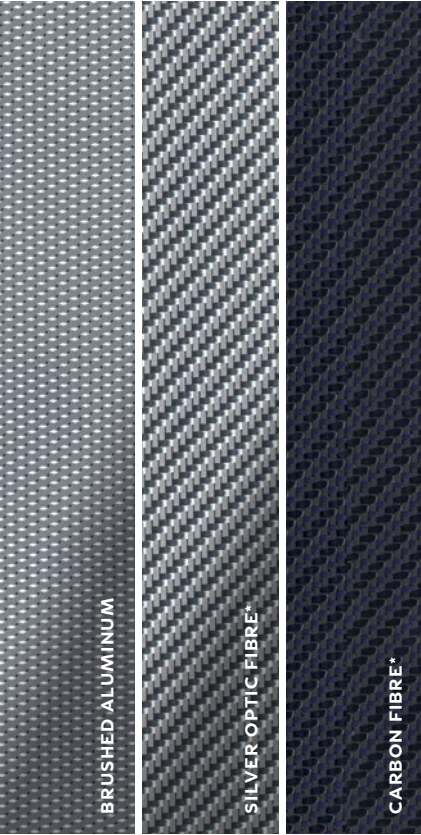
EXTERIOR COLOURS



INTERIOR COLOURS



INTERIOR TRIM



WHEELS



19 X 9.0-INCH ALUMINUM-ALLOY WHEELS



19 X 9.0-INCH UNIQUE ALUMINUM-ALLOY WHEELS

INFINITI has taken care to ensure that the colour swatches presented here are the closest possible representations of actual vehicle colours. Swatches may vary slightly due to the printing process and whether viewed in daylight, fluorescent or incandescent light. Please see the actual colours at your local INFINITI Retailer.

\* Additional cost applies for this option.



# SPECIFICATIONS

		Q60 2.0t AWD	Q60 3.0t AWD	Q60 Red Sport 400 AWD
POWER				
Engine				
2.0-litre I4 (1991cc), Turbocharged 16-valve inline 4-cylinder engine, aluminum-alloy block and heads with Idle Stop Start		•		
3.0-litre V6 twin turbo 300 (2997cc), Turbocharged 24-valve engine, aluminum-alloy block and heads with water-cooled air charging system			•	
3.0-litre V6 twin turbo 400 (2997cc), Turbocharged 24-valve engine, aluminum-alloy block and heads with water-cooled air charging system, turbo speed sensor and dual intercooler water pumps				•
Valvetrain				
Double overhead camshaft (DOHC), 4 valves per cylinder with hydraulic Variable Valve Timing Control System		•		
Double overhead camshaft (DOHC), 4 valves per cylinder with Continuously Variable Valve Timing Control System (CVTCS), which optimizes opening of intake valves			•	•
Fuel Economy				
Estimated L/100km (mpg) <sup>2</sup> - city		11.2 (25)	12.4 (23)	12.5 (23)
Estimated L/100km (mpg) <sup>2</sup> - highway		8.5 (33)	8.8 (32)	9.2 (31)
Horsepower				
208 HP @ 5,500 rpm		•		
300 HP @ 6,400 rpm			•	
400 HP @ 6,400 rpm				•
Torque				
258 lb-ft @ 1,500-3,500 rpm		•		
295 lb-ft @ 1,600-5,200 rpm			•	
350 lb-ft @ 1,600-5,200 rpm				•
Transmission				
Electronically controlled 7-speed automatic with Adaptive Shift Control (ASC)		•		
Electronically controlled 7-speed automatic with Adaptive Shift Control (ASC) and dual automatic transmission fluid coolers			•	•
INFINITI Drive Mode Selector settings allow driver to choose between Standard, Sport, Sport+, Snow, Eco or Personal mode		•	•	•
Navi Synchronized Adaptive Shift Control		◦	•	•
Hill start assist		•	•	•
Drive Type				
Intelligent All-Wheel Drive (AWD)		•	•	•
HANDLING				
Steering				
Type	Hydraulic Electronic Power Steering with vehicle-speed-sensitive adjustability	•		
	Rack Electronic Power Steering		•	•
	Direct Adaptive Steering®		◦	◦
Turning diameter	11.6 metres/38.1 feet	•	•	•
Active Trace Control <sup>16</sup>	Active Trace Control (adjusts vehicle braking and engine torque to help enhance cornering feel)	•	•	•

## HANDLING (continued)

Suspension				
Standard Front	Independent, double-wishbone with coil springs over Dual Flow Path® shock absorbers, stabilizer bar	•	•	
Standard Rear	Independent, multi-link with coil springs over Dual Flow Path® shock absorbers, stabilizer bar	•	•	
Dynamic Digital Suspension Front	Independent, double-wishbone with coil springs over shock absorbers, stabilizer bar. Continuously variable electronically controlled shock absorbers provide high damping force at low-frequency vibrations (flat ride) and low damping force at high-frequency vibrations (smooth ride)			•
Dynamic Digital Suspension Rear	Independent, multi-link with coil springs over shock absorbers, stabilizer bar. Continuously variable electronically controlled shock absorbers provide high damping force at low-frequency vibrations (flat ride) and low damping force at high-frequency vibrations (smooth ride)			•
Brakes				
Standard (Front/Rear)	12.6 x 1.1-inch ventilated discs/12.1 x 0.6-inch ventilated discs; 4-wheel, 4-channel ABS	•	•	
Red Sport 400 AWD	Red finish 4-piston opposed front calipers with 14.0 x 1.3-inch ventilated discs/2-piston opposed rear calipers with 13.8 x 0.8-inch ventilated discs; 4-wheel, 4-channel ABS			•
Wheels and Tires				
Standard	19 x 9.0-inch, split 5-spoke aluminum-alloy wheels with 255/40R19 all-season run-flat tires	•	•	
Red Sport 400 AWD	19 x 9.0-inch, unique aluminum-alloy wheels with 245/40R19 all-season run-flat tires			•
EXTERIOR				
Features				
Automatic on/off LED headlights with Daytime Running Lights		•	•	•
Front LED fog lights		•	•	•
High beam assist headlights (high/low automatic change)			◦	◦
Auto-leveling Adaptive Front lighting System			◦	◦
LED rear brake lights and centre high-mounted stoplight (CHMSL)		•	•	•
UV-reducing solar glass		•	•	•
Power sliding tinted glass moonroof with one-touch auto-open/close, tilt feature and sliding sunshade		•	•	•
Remote keyless entry system with door handle touch selective unlocking of driver's door or all doors		•	•	•
Remote power-opening of windows using INFINITI Intelligent Key®		•	•	•
Power heated outside mirrors with integrated LED turn signal lamp		•	•	•
Auto-dimming outside mirrors with reverse tilt-down feature		◦	•	•
Comprehensive airflow management for low coefficient of drag (Cd) and zero-lift front and rear aerodynamics		•	•	•
Speed-sensing flat-blade variable intermittent front windshield wipers		•	•	•
Rain-sensing front windshield wipers		◦	◦	•
Front door handle courtesy lights		•	•	•
Rear window defroster with indicator light and timer		•	•	•
Dual chrome exhaust finishers		•	•	•
Unique dual exhaust tips with brushed satin finish				•



	Q60 2.0t AWD	Q60 3.0t AWD	Q60 Red Sport 400 AWD
INTERIOR			
Features			
INFINITI Intelligent Key® with Push Button Ignition	•	•	•
Remote Engine Start <sup>4,5</sup>		•	•
Dual Zone Automatic Temperature Control (ATC) system with microfilter	•	•	•
Advanced Climate Control System (ACCS) with auto-recirculation, Plasmacluster® air purifier and Grape Polyphenol Filter <sup>17</sup>		◦	◦
Power windows with illuminated switches and one-touch auto-up/down with auto-reverse feature	•	•	•
Power door locks with automatic locking feature	•	•	•
Valet key and trunk lockout feature	•	•	•
Retained accessory power for windows and moonroof (if equipped)	•	•	•
Sequential welcome lighting illuminated entry system with delayed fade-out	•	•	•
Front sun visors with illuminated vanity mirrors	•	•	•
Dual overhead front map lights with overhead sunglasses storage	•	•	•
Front seatback map pockets; front door pockets	•	•	•
Dual front and rear cup holders	•	•	•
Front armrest with storage compartment, one 12-volt power outlet, auxiliary input jacks and two USB connection ports <sup>18</sup>	•	•	•
Battery saver helps prevent accidental discharging if electrical accessories are left on	•	•	•
Front and rear carpeted floor mats	•	•	•
Seating and Trim			
Leatherette-appointed seating	•		
Semi-aniline leather-appointed seating	◦	•	•
Brushed aluminum interior trim	•	•	
Carbon fibre trim			•
Silver optic fibre trim			◦
8-way power driver's seat with adjustable manual lumbar support: 8-way power front-passenger's seat	•		
8-way power driver's seat with adjustable power lumbar support: 8-way power front-passenger's seat	◦	•	
8-way power sport type front seats. Driver's seat power lumbar and power torso support adjustments			•
Dual occupant memory system for driver's seat, mirrors and steering wheel settings, linked to individual Intelligent Keys	◦	•	•
Entry/exit assist for driver's seat and steering wheel	◦	•	•
Heated front seats	◦	•	•
Heated steering wheel	◦	•	•
Leather-wrapped 3-spoke steering wheel and shift knob with aluminum accent	•	•	•
Aluminum front doorsill kick plates with INFINITI logo	•	•	•
Aluminum-accented pedals and footrest			•
Audio and Entertainment System			
6-speaker audio system with AM/FM radio, CD player with MP3 playback capability, Radio Data System (RDS) and speed-sensitive volume control	•		
Bose® Performance Series Audio System with Advanced Staging Technology, Centerpoint® 2.0 Surround, AudioPilot® 2.0 Noise Compensation, 13 speakers (featuring door-mounted metal/aluminum speaker grilles), multiple 10" and 6 x 9" woofers and a lightweight silk dome tweeter, AM/FM radio, CD player with MP3 playback capability, Radio Data System (RDS) and speed-sensitive volume control	◦	•	•
Driver's Audio Stage	•	•	•
Multimedia playback of digital files from a USB flash drive on WVGA colour display <sup>18</sup>	•	•	•
Two USB connection ports for iPod® interface, flash drive or other compatible devices <sup>18</sup>	•	•	•
SiriusXM Satellite Radio <sup>19</sup>	•	•	•
Streaming audio via Bluetooth® wireless technology <sup>6</sup>	•	•	•
Steering wheel-mounted audio controls	•	•	•
In-glass diversity antenna	•	•	•

• Standard   ◦ Available

INTERIOR (continued)

Instrumentation and Driver Controls

INFINITI InTouch™ dual display system screens, LCD/VGA 8-inch upper and 7-inch lower colour vehicle-information displays <sup>3</sup>	•	•	•
INFINITI InTouch™ fully customizable digital environment for audio, climate control, feature displays, IT functions and navigation settings stored in each INFINITI Intelligent Key <sup>8,3</sup>	◦	•	•
INFINITI InTouch™ with Navigation with Lane Guidance	◦	•	•
INFINITI Voice Recognition for audio and vehicle-information systems	•	•	•
Bluetooth® Hands-free Phone System <sup>6</sup>	•	•	•
RearView Monitor <sup>20</sup>	•	•	
Around View® Monitor with Moving Object Detection and Front and Rear Sonar System <sup>9,21</sup>	◦	◦	•
Multi-function trip computer with fuel range and outside temperature display	•	•	•
Fine Vision electroluminescent gauges	•	•	•
Tilt and telescopic steering column	•		
Power tilt and telescopic steering column	◦	•	•
Steering wheel-mounted paddle shifters			•
Auto-dimming inside mirror with HomeLink® Universal Transceiver	◦	•	•
Cruise control with steering wheel-mounted switches	•	•	•

SAFETY FEATURES

Safety

INFINITI Advanced Airbag System (AABS) includes dual-stage front supplemental airbags with an occupant-classification sensor. Airbag inflation rate is adjusted depending on crash severity. If the front-passenger's seat is empty, a sensor will deactivate the airbag <sup>15</sup>	•	•	•
Driver and front-passenger side-impact supplemental airbags <sup>15</sup>	•	•	•
Roof-mounted curtain side-impact supplemental airbags for front and rear-seat outboard occupant head protection with rollover sensor <sup>15</sup>	•	•	•
Front seat belts with pre-tensioners and load limiters, driver's seat Emergency Locking Retractor (ELR) and passenger's seat ELR and Automatic Locking Retractor (ALR)	•	•	•
Second-row 3-point seat belts with ELR and ALR	•	•	•
Zone Body construction with reinforced passenger compartment and front and rear crumple zones	•	•	•
LATCH System (Lower Anchors and Tethers for CHildren) helps simplify proper installation of compatible child restraint seats	•	•	•
Brake Assist (BA) <sup>22</sup>	•	•	•
4-wheel Anti-lock Braking System (ABS) with Electronic Brake force Distribution (EBD)	•	•	•
Advanced Vehicle Dynamic Control (VDC) <sup>23</sup> with Traction Control System (TCS)	•	•	•
Tire Pressure Monitoring System (TPMS) provides specific information for each tire and low pressure warning <sup>24</sup>	•	•	•
Emergency inside trunk release	•	•	•
Front-seat Pre-Crash Seat Belts		◦	◦
Backup Collision Intervention (BCI) <sup>10</sup>	◦	◦	•
Blind Spot Warning (BSW) <sup>12</sup>	◦	◦	•
Blind Spot Intervention® (BSI®) <sup>12</sup>		◦	◦
Predictive Forward Collision Warning (PFCW) <sup>13</sup>	◦	◦	•
Forward Emergency Braking with Pedestrian Detection <sup>11</sup>	◦	◦	•
Lane Departure Warning (LDW) and Lane Departure Prevention (LDP) Systems <sup>14</sup> with Active Lane Control <sup>8</sup>		◦	◦
Security			
Remote keyless entry system with door handle touch selective unlocking of driver's door or all doors	•	•	•
Vehicle Security System with INFINITI Vehicle Immobilizer System	•	•	•

• Standard   ◦ Available



	Q60 2.0t AWD	Q60 3.0t AWD	Q60 Red Sport 400 AWD
<b>OPTION PACKAGES</b>			
<b>Premium Package</b>	◦	•	•
Bose® Performance Series Audio +7 speakers (13 total) • Bose® Centerpoint® simulated surround • HomeLink® Universal Transceiver • Memory auto-dimming outside mirrors with reverse link • Power tilt and telescopic steering wheel with memory and easy entry • INFINITI InTouch™ with Navigation with voice guidance, Lane Guidance and 3D building graphics <sup>3</sup> • INFINITI InTouch™ Services with 1 year of safety, security and convenience services <sup>3</sup> • Navigation Synchronized Adaptive Shift Control • SiriusXM Traffic <sup>19</sup> • Voice Recognition for navigation functions • Memory front driver seat • Power lumbar adjustment for front driver seat • Heated steering wheel • Heated front seats • Semi-aniline leather-appointed seating			
<b>Driver Assistance Package – Requires Premium Package on the Q60 2.0t AWD.</b>	◦	◦	•
Forward Emergency Braking with Pedestrian Detection <sup>11</sup> • Predictive Forward Collision Warning (PFCW) <sup>13</sup> • Rain-sensing wipers • Around View® Monitor with Moving Object Detection and Front and Rear Sonar System <sup>9,21</sup> • Blind Spot Warning <sup>12</sup> • Backup Collision Intervention with Rear Cross Traffic Alert <sup>10</sup>			
<b>Technology Package – Requires Driver Assistance Package.</b>		◦	◦
Auto-leveling Adaptive Front lighting System with auto-leveling headlights • High beam assist headlights (high/low automatic change) • Distance Control Assist (DCA) <sup>25</sup> • Blind Spot Intervention® (BSI®) System <sup>12</sup> • Front-seat Pre-Crash Seat Belts • Intelligent Cruise Control (Full-Speed Range) <sup>7</sup> • Lane Departure Warning <sup>14</sup> • Lane Departure Prevention <sup>14</sup> with Active Lane Control <sup>8</sup> • Advanced Climate Control System with auto-recirculation, Plasmacluster® air purifier and Grape Polyphenol Filter <sup>17</sup> • Eco Pedal • Direct Adaptive Steering			
<b>Silver Optic Fibre Interior Trim – Requires Q60 Red Sport 400 AWD with Technology Package.</b>			◦
Silver Optic Fibre Interior trim			
<b>ACCESSORIES<sup>26</sup></b>			
Sport Grille	◦	◦	◦
Rear Bumper Protector	◦	◦	◦
Radiant Stainless Steel Illuminated Kick Plates	◦	◦	◦
Radiant INFINITI Welcome Lighting	◦	◦	◦
Radiant Interior Ambient Accent Lighting	◦	◦	◦
All-season Floor Mats	◦	◦	◦
Trunk Organizer	◦	◦	◦
Trunk Protector	◦	◦	◦
Console Net	◦	◦	◦
Cargo Net <sup>27</sup>	◦	◦	◦

• Standard   ◦ Available

## DIMENSIONS

### Exterior

Coefficient of drag (Cd)	0.29	0.28	0.29
Overall length (mm/inches)	4,685/184.4	4,685/184.4	4,685/184.4
Overall width (mm/inches)	1,850/72.8	1,850/72.8	1,850/72.8
Overall height (mm/inches)	1,395/54.9	1,395/54.9	1,395/54.9
Wheelbase (mm/inches)	2,850/112.2	2,850/112.2	2,850/112.2
Track width (mm/inches)–Front	1,555/61.2	1,555/61.2	1,555/61.2
Track width (mm/inches)–Rear	1,582/62.2	1,582/62.2	1,582/62.2

### Interior

Headroom with moonroof (mm/inches)–Front	950/37.4	950/37.4	950/37.4
Headroom with moonroof (mm/inches)–Rear	876.3/34.5	876.3/34.5	876.3/34.5
Legroom (mm/inches)–Front	1,095/43.1	1,095/43.1	1,095/43.1
Legroom (mm/inches)–Rear	823/32.4	823/32.4	823/32.4
Shoulder room (mm/inches)–Front	1,387/54.6	1,387/54.6	1,387/54.6
Shoulder room (mm/inches)–Rear	1,321/52	1,321/52	1,321/52
Hip room (mm/inches)–Front	1,369/53.9	1,369/53.9	1,369/53.9
Hip room (mm/inches)–Rear	1,217/47.9	1,217/47.9	1,217/47.9

### Weight and Capacity

Passenger volume with moonroof (litres/cubic feet)	2,395.6/84.6	2,395.6/84.6	2,395.6/84.6
Cargo volume (litres/cubic feet)	246.4/8.7	246.4/8.7	246.4/8.7
Curb weight (kg/lbs)	1,793/3,952	1,793/3,952	1,835/4,046
Weight distribution (percent) (Front/Rear)	56/42	58/42	58/42
Fuel capacity (litres/gallons)	75.7/20	75.7/20	75.7/20

This brochure is intended for general descriptive and informational purposes only. It is subject to change and does not constitute an offer, representation or warranty (express or implied) by INFINITI a Division of Nissan Canada, Inc. Interested parties should confirm the accuracy of any information in this brochure as it relates to a vehicle directly with INFINITI a Division of Nissan Canada, Inc., before relying on it to make a purchase decision. INFINITI a Division of Nissan Canada, Inc., reserves the right to make changes, at any time, without prior notice, in prices, colours, materials, equipment, specifications, and models and to discontinue models or equipment. Due to continuous product development and other pre- and post-production factors, actual vehicle, materials and specifications may vary from this brochure. Some vehicles shown with optional equipment. See the actual vehicle for complete accuracy. Availability and delivery times for particular models or equipment may vary. For additional information on availability, options or accessories, see your INFINITI Retailer or contact INFINITI a Division of Nissan Canada, Inc.

**1** Available on select models.   **2** 2017 Fuel Economy Estimates. Actual mileage may vary with driving conditions – use for comparison only.   **3** Driving is serious business. Only use services when safe to do so. Services, including automatic crash notification and SOS, require an active subscription, and are dependent upon the telematics device being in an operative condition, its ability to connect to a wireless network, compatible wireless network availability, navigation map data, and GPS satellite signal receptions, the absence of which can limit or prevent the ability to reach Customer Care or receive support. Services require compatible cellular network provided by independent cellular companies. Cellular network not available in all areas and/or available at all times. Cellular technology is evolving, and changes to cellular networks provided by independent companies are not within INFINITI's or Sirius XM Connected Vehicle Services Canada's ("Sirius XM CVS Canada") control. Like other devices that rely on network coverage, once the network service is discontinued, INFINITI InTouch services will not function unless equipment replacements, upgrades, or alternative network coverage are available at that time, which neither INFINITI nor Sirius XM CVS Canada can guarantee. INFINITI and Sirius XM CVS Canada are not responsible for associated costs that may be required for continued operation due to cellular network shutdown or discontinuation (including equipment upgrades, if available, or roaming charges on alternative networks). Certain vehicle services and features, including Google® compatible services, provided by independent companies are not within INFINITI's or Sirius XM CVS Canada's control and are subject to change without notice or liability to INFINITI or Sirius XM CVS Canada and either of their affiliates and agents. Standard text rates and/or data usage may apply. Certain services require a PIN for activation. Complimentary 12 month subscription begins on your date of purchase. Subsequently, your credit card (if on file) will be charged at the then current subscription rate and your service will continue for 1 year periods under the terms of your Subscription Agreement, unless cancelled. Terms and conditions of subscription agreement apply. See [infiniti.ca/infinitintouch](http://infiniti.ca/infinitintouch) for more information.   **4** Provincial laws may apply; review local laws before using.   **5** Q60 3.0t AWD and Q60 Red Sport 400 models only.   **6** Availability of specific features is dependent upon the phone's Bluetooth® support. Please refer to your phone Owner's Manual for details. Bluetooth word mark and logos are owned by Bluetooth SIG, Inc., and any use of such marks by INFINITI is under licence.   **7** Intelligent Cruise Control is not a collision avoidance or warning device. Designed to use limited braking. Failure to apply the brakes could result in an accident.   **8** Active Lane Control cannot prevent accidents or loss of control. It is the driver's responsibility to be in control of the vehicle at all times. Active Lane Control may not detect the lane markers in certain road, weather or driving conditions.   **9** Around View Monitor with Moving Object Detection cannot completely eliminate blind spots and may not detect every object. Moving Object Detection operates at vehicle speeds below 8 km/h. Always check surroundings and turn to look behind you before moving vehicle.   **10** Backup Collision Intervention will not detect every object, and speed limitations apply. Always check surroundings and turn to look behind you before moving vehicle. See Owner's Manual for details.   **11** Forward Emergency Braking with Pedestrian Detection is not a replacement for responsible driving. May not provide braking or pedestrian detection in certain conditions. Limitations apply. See Owner's Manual for details.   **12** Blind Spot Warning/ Blind Spot Intervention Systems are not a substitute for proper lane change procedures. The systems will not prevent contact with other vehicles or accidents. They may not detect every vehicle or object around you.   **13** Predictive Forward Collision Warning is intended to warn you before a collision occurs; it cannot prevent a collision. Speed and other limitations apply. See Owner's Manual for details.   **14** The Lane Departure Warning/Lane Departure Prevention Systems operate only when the lane markings are clearly visible on the road. Speed limitations apply. See your Owner's Manual for more details.   **15** Airbags are only a supplemental restraint system; always wear your seat belt. Even with the occupant-classification sensor, rear-facing child restraints should not be placed in the front-passenger's seat. Also, in addition to any other requirement of applicable law, all children 12 and under should ride in the rear seat properly secured in child restraints, booster seats, or seat belts according to their size. Airbags will only inflate in certain accidents; see your Owner's Manual for more details.   **16** Active Trace Control cannot prevent accidents or loss of control. It is the driver's responsibility to be in control of the vehicle at all times.   **17** The Advanced Climate Control System with Plasmacluster air purifier helps scrub the air in the vehicle's interior. The system senses exterior odours, suppresses unpleasant interior odours, stops the inflow of external odours and helps keep the cabin smelling fresh, but does not always eliminate odours.   **18** Driving is serious business and requires your full attention. If you have to use the connected device while driving, exercise extreme caution at all times so full attention may be given to vehicle operation. iPod is a registered trademark of Apple Inc. All rights reserved. iPod® not included.   **19** XM® and SiriusXM® Satellite Radio is available in the 10 Canadian provinces and the 48 contiguous United States. Basic monthly subscription required and sold separately after trial period. NavTraffic®/SiriusXM® Traffic is available in select North American markets. In Canada, at time of printing, incident and flow data is available for 12 metropolitan areas of Canada (Vancouver, Calgary, Edmonton, Toronto, Ottawa, Montreal, Quebec City, Hamilton, St. Catharines, Kitchener, Guelph, and London). Subscription sold separately after trial period. All subscriptions subject to customer agreement at [siriusxm.ca/terms](http://siriusxm.ca/terms). All fees and programming subject to change. © 2016 Sirius XM Canada Inc. The Sirius, XM, and SiriusXM names and all related marks and logos are trademarks of Sirius XM Radio Inc. All other trademarks are the property of their respective owners.   **20** Parking aid/convenience feature. Cannot completely eliminate blind spots. May not detect every object and does not warn of moving objects. Always check surroundings and turn to look behind you before moving vehicle.   **21** The Sonar System is a convenience, not a substitute for proper parking and/or backing procedures. Always check that it is safe to do so before moving vehicle. May not detect every object.   **22** Brake Assist is only an aid to assist the driver and is not a collision warning or avoidance device. It is the driver's responsibility to be in control of the vehicle at all times.   **23** Vehicle Dynamic Control, which should remain on when driving except when freeing the vehicle from mud or snow, cannot prevent accidents due to abrupt steering, carelessness, or dangerous driving techniques.   **24** Tire Pressure Monitoring System is not a substitute for regular tire pressure checks.   **25** Distance Control Assist helps maintain a distance to the vehicle in front under certain conditions. Not a collision avoidance system. Failure to apply the brakes could result in an accident.   **26** May require additional options or option packages.   **27** Cargo and load capacity limited by weight and distribution. Always secure all cargo. Heavy loading of the vehicle with cargo, especially on the roof, will affect handling and stability of the vehicle.

AudioPilot, Bose and Centerpoint are registered trademarks of Bose Corporation. HomeLink is a registered trademark of Gentex Corporation. Plasmacluster is a registered trademark of Sharp Corporation.