

Ford V-8
FOR 1936



F O R D V - 8 F O R 1 9 3 6

F E A T U R E S

THE MODERN CAR. New, fashionable appearance, with distinctive radiator grille, and large streamlined mudguards. Horns are concealed within small grilles below headlamps. Clear vision ventilation.

SAFETY GLASS ALL ROUND. Ford V-8 for 1936 has safety glass in windscreen and all windows. This important refinement is provided at no extra cost.

ALL-STEEL CLOSED BODIES. Ford V-8 closed bodies are of genuine all-steel construction. Body panels are welded into a one-piece shell, which is then welded to a steel framework. This unique construction gives enormous strength with maximum safety and durability.

SUPER SAFETY BRAKES. Large braking area with positive, effective action combining unusual reliability under all conditions. The same type of mechanical brakes that are used on the world's finest cars.

EASIER STEERING. Ratio increased to 17-to-1. Steering gear sector shaft mounted on roller bearings. Longer steering arm gives greater leverage.

EASIER GEAR CHANGING. Synchronised second and high speed gears provide quiet changing with easier, smoother and quicker action. Quiet running in all speeds, including reverse, because of silent helical gears.

NEW DESIGN STEEL WHEELS. Combining modern style and unusual strength. Large hub caps with rustless steel centres.

GREATER COOLING AREA. New, large radiator has increased cooling surface. New bonnet louvres permit rapid flow of air through engine compartment.

V-8 PERFORMANCE AND ECONOMY. Smooth, quiet, V-type, 8-cylinder engine, proved the most dependable and the most economical Ford engine ever built. This V-8 car unit gives a quality of performance that no other engine can equal.

S P E C I F I C A T I O N S

ENGINE.

V-8 90° with Aluminium Heads. Piston displacement 221 cubic inches. Bore $3\frac{1}{8}$ in. Stroke $3\frac{1}{2}$ in. Compression Ratio 6.3 to 1. H.P. Rating R.A.C. 30.00. B.H.P. 93 at 3,800 R.P.M. Lubrication—forced feed to all Main Connecting Rod and Camshaft bearing. Capacity 4 quarts.

CRANKSHAFT.—Special Ford cast alloy steel. Weight, 56½ lbs.; 3 main bearings; total main bearing surface, 36½ sq. inches. Statically and dynamically balanced.

CARBURETTOR.—Dual down draft carburettor with oil bath type air cleaner.

FUEL SYSTEM.—Engine driven fuel pump. Terne plate steel fuel tank mounted at rear; capacity 11 gallons.

COOLING.—Tube and fin type radiator. 444 sq. ins. cooling surface. Capacity 4½ gallons. 4 Blade, 15½ in. fan. Centrifugal water pumps. 1 in each cylinder head.

IGNITION.—Battery coil and distributor. Distributor driven directly off end of camshaft. Full automatic-vacuum control.

PASSENGER CAR CHASSIS.

CLUTCH AND TRANSMISSION. Dry Single Plate Clutch with plate pressure increased by centrifugal force. Diameter 9 in. Surface 75 sq. in. 3 Speed selective gear transmission. All gears silent helical type. Synchronised second and high gears.

BRAKES.—Four wheel mechanically operated internal expanding. 2 shoe type. Adjustment by outside stud on each brake plate. Drums of malleable iron alloy. Total braking area, 186 sq. in.

SPRINGS.—Ford transverse cantilever front and rear of chrome alloy steel. Controlled by adjustable double acting hydraulic shock absorbers.

FRAME.—Special Ford design. Pressed carbon steel. Double drop, with X members. Channels extending to ends of frame. Main side members, depth 5½ in., width 2 in.

STEERING GEAR.—Worm and sector. Ratio 17 to 1. Worm mounting—Two tapered roller bearings. Sector Shaft mounting. Two needle Roller bearings—Wheel diameter 17 in.

FRONT AXLE.—Special Ford carbon manganese steel. "I" beam reverse Elliott. Adjustable tapered roller wheel bearings.

REAR AXLE.—¾ floating type. Spiral bevel gear with straddle mounted pinion. Material of Ford carbon manganese steel. Roller bearings throughout. De Luxe Series, ratio 4.11 to 1. Business Series, 3.54 to 1. Shafts 1½ in. diameter.

ROAD CLEARANCE.—8.5 in.

TYRES 6.00 x 16. Pressure 30 lbs.

TURNING CIRCLE 40 ft. right or left.

WHEELBASE 112 in. Springbase 123.13 in.

Ford Motor Company of Australia Pty. Ltd., whose policy is one of continuous improvement, reserves the right to change specifications and prices at any time without notice or incurring liability to purchasers.

F O R D V-8 F O R 1 9 3 6

F E A T U R E S

THE MODERN CAR. New, fashionable appearance, with distinctive radiator grille, and large streamlined mudguards. Horns are concealed within small grilles below headlamps. Clear vision ventilation.

SAFETY GLASS ALL ROUND. Ford V-8 for 1936 has safety glass in windscreen and all windows. This important refinement is provided at no extra cost.

ALL-STEEL CLOSED BODIES. Ford V-8 closed bodies are of genuine all-steel construction. Body panels are welded into a one-piece shell, which is then welded to a steel framework. This unique construction gives enormous strength with maximum safety and durability.

SUPER SAFETY BRAKES. Large braking area with positive, effective action combining unusual reliability under all conditions. The same type of mechanical brakes that are used on the world's finest cars.

S P E C I F I C A T I O N S

ENGINE.

V-8 90° with Aluminium Heads. Piston displacement 221 cubic inches. Bore $3\frac{1}{8}$ in. Stroke $3\frac{1}{2}$ in. Compression Ratio 6.3 to 1. H.P. Rating R.A.C. 30.00. B.H.P. 33 at 3,800 R.P.M. Lubrication—forced feed to all Main Connecting Rod and Camshaft bearing. Capacity 4 quarts.

CRANKSHAFT.—Special Ford cast alloy steel. Weight, 56½ lbs.; 3 main bearings; total main bearing surface, 36½ sq. inches. Statically and dynamically balanced.

CARBURETTOR.—Dual down draft carburettor with oil bath type air cleaner.

FUEL SYSTEM.—Engine driven fuel pump. Tonne plate steel fuel tank mounted at rear; capacity 11 gallons.

COOLING.—Tube and fin type radiator. 444 sq. ins. cooling surface. Capacity $4\frac{1}{2}$ gallons. 4 Blade, 15½ in. fan. Centrifugal water pumps. 1 in each cylinder head.

IGNITION.—Battery coil and distributor. Distributor driven directly off end of camshaft. Full automatic-vacuum control.

PASSENGER CAR CHASSIS.

CLUTCH AND TRANSMISSION. Dry Single Plate Clutch with plate pressure increased by centrifugal force. Diameter 9 in. Surface 75 sq. in. 3 Speed selective gear transmission. All gears silent helical type. Synchronised second and high gears.

Ford Motor Company of Australia Pty. Ltd., whose policy is one of continuous improvement, reserves the right to change specifications and prices at any time without notice or incurring liability to purchasers.

FORD MOTOR COMPANY OF AUSTRALIA PTY. LTD. (INCORPORATED IN VICTORIA) DMS593/50M/V

EASIER STEERING. Ratio increased to 17-to-1. Steering gear sector shaft mounted on roller bearings. Longer steering arm gives greater leverage.

EASIER GEAR CHANGING. Synchronised second and high speed gears provide quiet changing with easier, smoother and quicker action. Quiet running in all speeds, including reverse, because of silent helical gears.

NEW DESIGN STEEL WHEELS. Combining modern style and unusual strength. Large hub caps with rustless steel centres.

GREATER COOLING AREA. New, large radiator has increased cooling surface. New bonnet louvres permit rapid flow of air through engine compartment.

V-8 PERFORMANCE AND ECONOMY. Smooth, quiet, V-type, 8-cylinder engine, proved the most dependable and the most economical Ford engine ever built. This V-8 car unit gives a quality of performance that no other engine can equal.

BRAKES.—Four wheel mechanically operated internal expanding. 2 shoe type. Adjustment by outside stud on each brake plate. Drums of malleable iron alloy. Total braking area, 186 sq. in.

SPRINGS.—Ford transverse cantilever front and rear of chrome alloy steel. Controlled by adjustable double acting hydraulic shock absorbers.

FRAME.—Special Ford design. Pressed carbon steel. Double drop, with X members. Channels extending to ends of frame. Main side members, depth $5\frac{1}{2}$ in., width 2 in.

STEERING GEAR.—Worm and sector. Ratio 17 to 1. Worm mounting—Two tapered roller bearings. Sector Shaft mounting. Two needle Roller bearings—Wheel diameter 17 in.

FRONT AXLE.—Special Ford carbon manganese steel. "X" beam reverse Elliott. Adjustable tapered roller wheel bearings.

REAR AXLE.—3 floating type. Spiral bevel gear with straddle mounted pinion. Material of Ford carbon manganese steel. Roller bearings throughout. De Luxe Series, ratio 4.11 to 1. Business Series, 3.54 to 1. Shafts $1\frac{1}{2}$ in. diameter.

ROAD CLEARANCE.—8.5 in.

TYRES 6.00 x 16. Pressure 30 lbs.

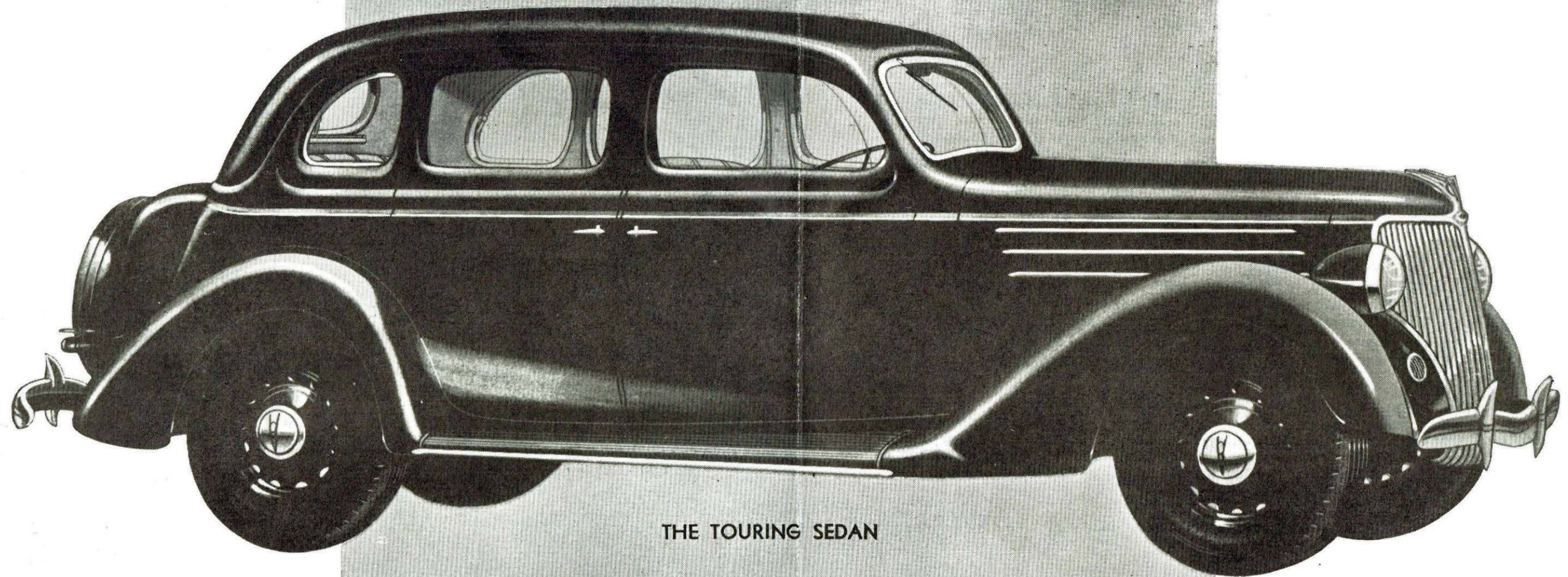
TURNING CIRCLE 40 ft. right or left.

WHEELBASE 112 in. Springbase 123.13 in.

Ford V-8

FOR 1936

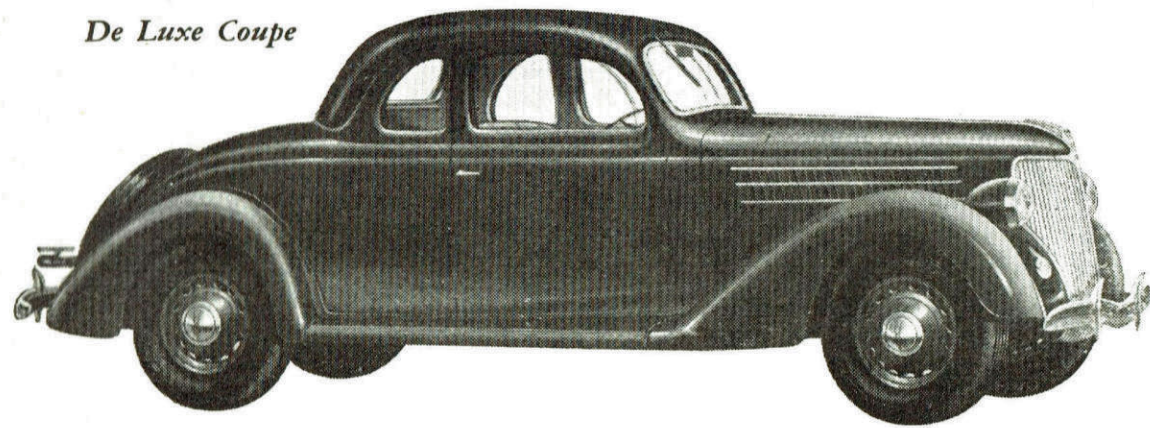




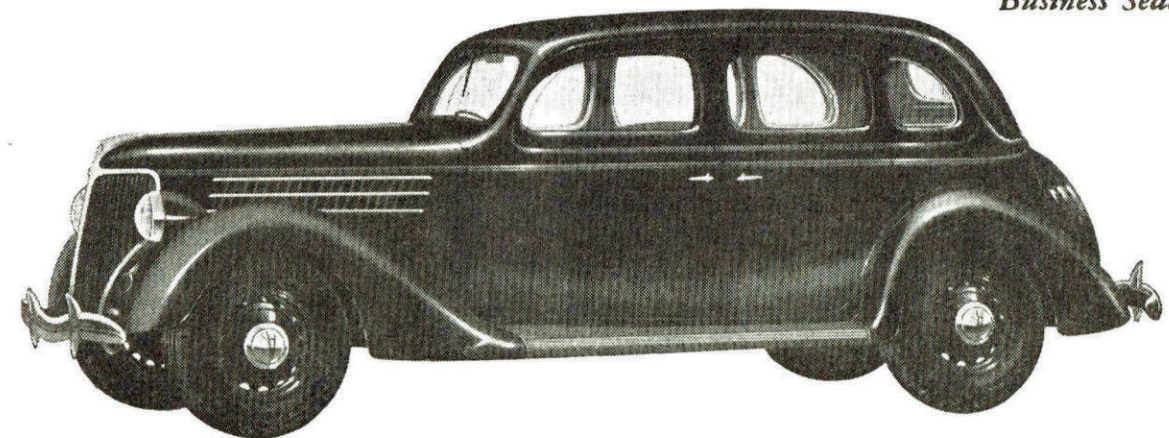
THE TOURING SEDAN

SAFETY GLASS ALL ROUND. ALL STEEL CLOSED BODIES. SUPER SAFETY BRAKES.

De Luxe Coupe

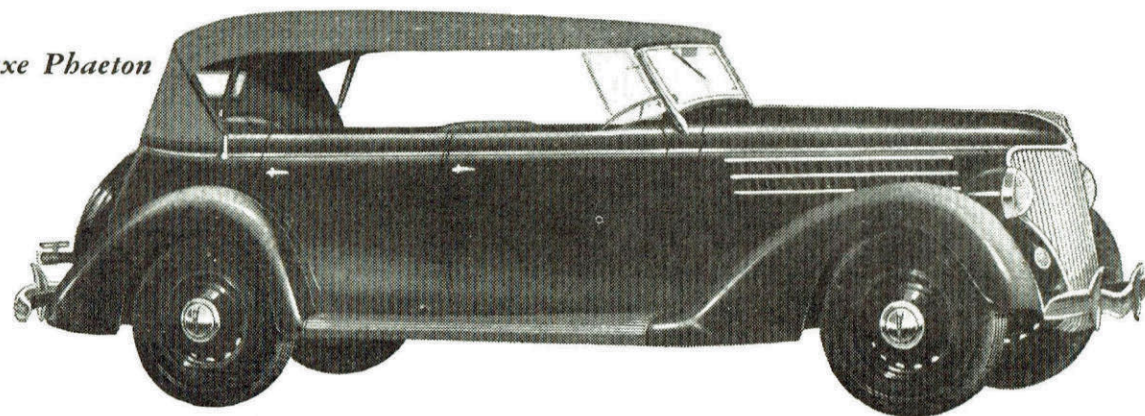


Business Sedan

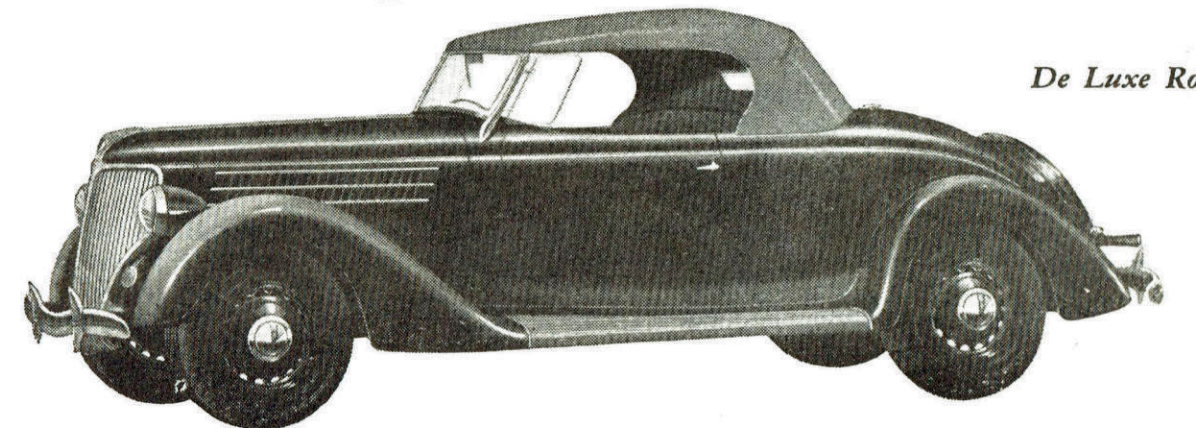


Styled in the modern manner. Safety glass in windscreen and all windows. Beautiful closed bodies of genuine all-steel construction. The instant control of Super-safety brakes. Luxurious Centre-poise riding for all passengers. Incomparable V-8 power and performance.

De Luxe Phaeton



De Luxe Roadster



Ford V-8
FOR 1936