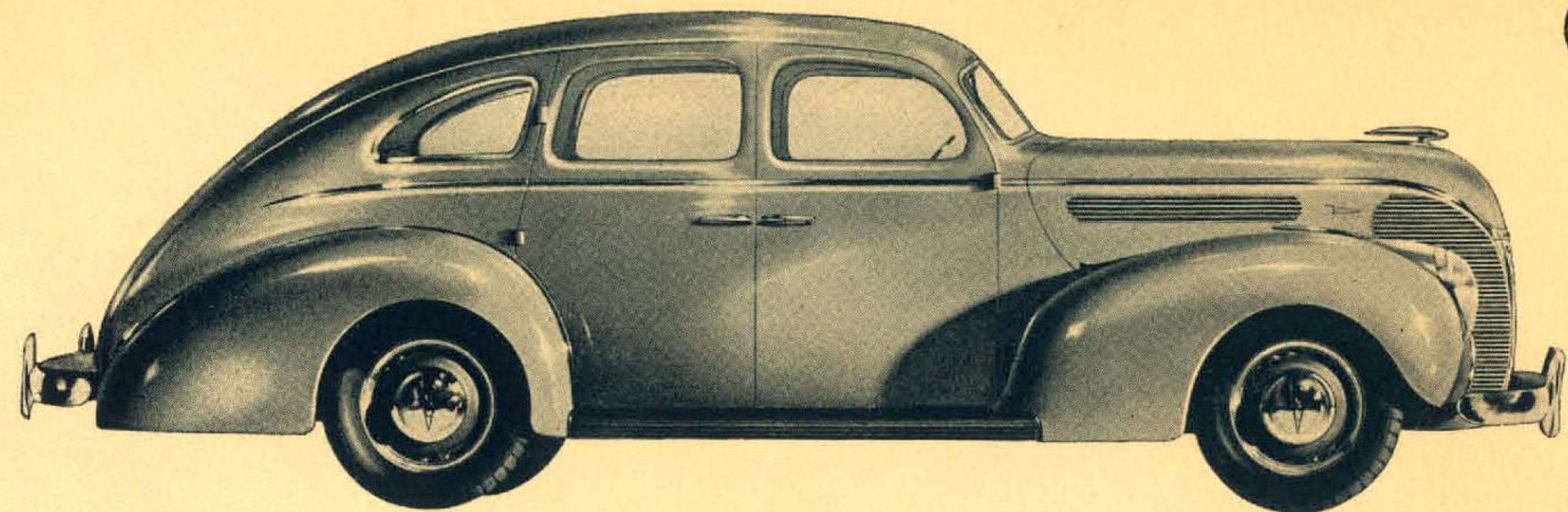


FOR 1938 FORD

*introduces*

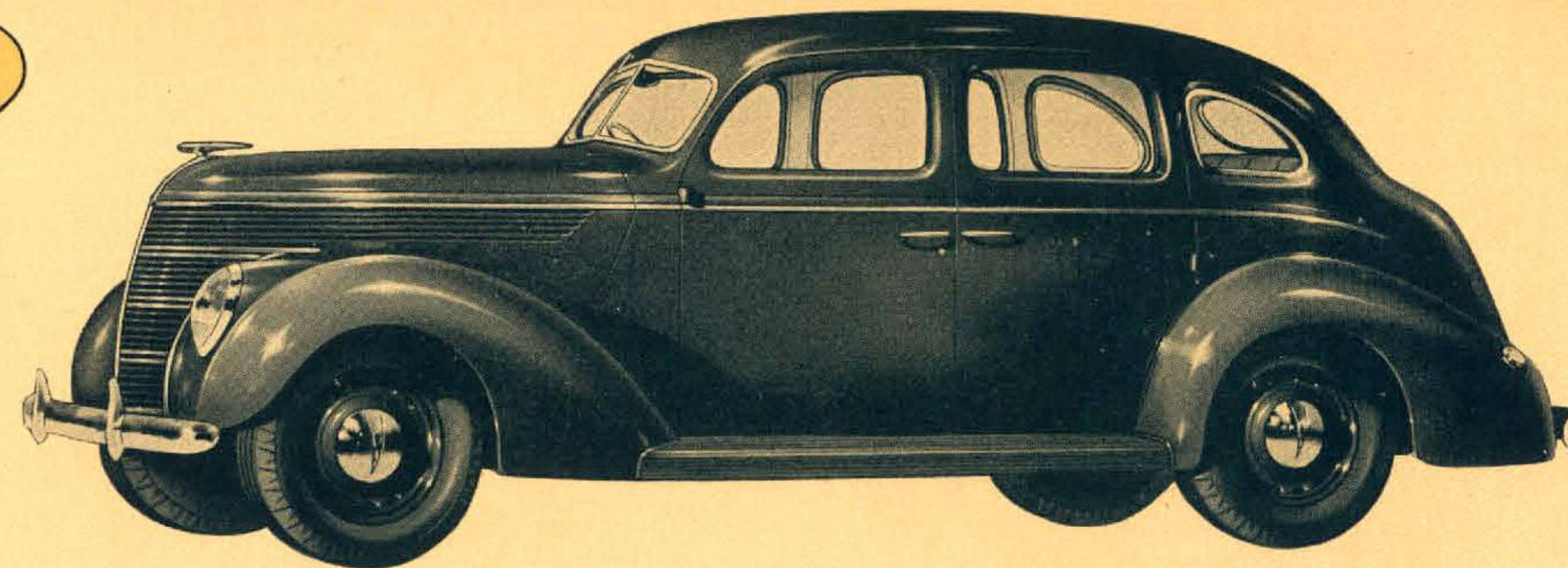
TWO NEW V-8 CARS





**FOR 1938**

**V-8 VALUE REACHES  
A WIDER FIELD**



**DE LUXE SEDAN**

The biggest Ford V-8 ever built. A large, roomy, impressive sedan of striking beauty with spacious passenger accommodation and appointments of sheer luxury. Available in a wide range of body colours and specially designed interior ensembles. V-8 engine giving the economy of an ordinary "six." Ford all-steel body, with one-piece steel roof, steel sides and floor. Safety glass all round. Huge luggage compartment under smoothly streamlined rear end.

**BUSINESS SEDAN**

The low-priced, economical-to-operate car for the business user. Larger interior space. V-8 engine, proved for economy. Ford all-steel body. Safety glass all round. Big, built-in luggage trunk. An ideal sedan for business users and all who require economical operation with day-in, day-out dependability and low depreciation.



# SPECIFICATIONS

ENGINE.—V-8 90° L Head. Piston displacement 221 cubic inches. Bore 3 1/16 in. Stroke 3 1/4 ins. H.P. Rating R.A.C. 30.00. Maximum B.H.P.: Business Series, 85 at 3,800 R.P.M.; De Luxe Series, 95 at 3,800 R.P.M. Lubrication—forced feed to all Main Connecting Rod and Camshaft bearings. Capacity 4 quarts. Cylinder head material—De Luxe Series, Aluminium. Business Series, Cast Iron.

CRANKSHAFT.—Special Ford cast alloy steel. Weight 63.8 lbs.; 3 main bearings; total main bearing surface. 40.5 sq. inches. Statically and dynamically balanced.

CARBURETTOR.—Dual down-draught carburettor with oil bath type air cleaner.

FUEL SYSTEM.—Engine driven fuel pump. Terne plate steel fuel tank mounted at rear; capacity 12 gallons.

COOLING.—Tube and fin type radiator. 362 sq. ins. cooling surface. Capacity 4 1/2 gallons. 4 Blade, 15 1/4 in. fan. Centrifugal water pumps, at front of each cylinder block.

IGNITION.—Battery coil and distributor. Distributor driven directly off end of camshaft. Full automatic-vacuum control.

PASSENGER CAR CHASSIS.

CLUTCH AND TRANSMISSION.—Dry Single Plate Clutch with plate pressure increased by centrifugal force. Diameter 9 in. Surface 75 sq. in. 3 Speed selective gear transmission. All gears silent helical type. Synchronised second and high gears.

BRAKES.—Four wheel cable and conduit operated internal expanding 2 shoe type with controlled self-energising brake shoes. Adjustment by outside stud on each brake plate. Total braking area, 186 sq. in. Hand lever location—right side of steering wheel under instrument panel. Hand brake operates on all four wheels.

SPRINGS.—Ford transverse cantilever front and rear of chrome alloy steel. Controlled by adjustable double acting hydraulic shock absorbers. Spring leaves grooved to take pressure gun lubrication through lubrication nipple on tie bolt.

FRAME.—Special Ford design. Pressed carbon steel. Double drop, with X members. Channels extending to ends of frame. Main side members, depth 5 1/2 ins., width 2 in.

STEERING GEAR.—Worm and Roller. Ratio 18.2 to 1. Worm mounting—Two tapered roller bearings. Wheel diameter 17 in.

FRONT AXLE.—Special Ford carbon manganese steel. "I" beam reverse Elliott. Adjustable tapered roller wheel bearings.

REAR AXLE.—1/2 floating type. Spiral bevel gear with straddle mounted pinion. Material of Ford carbon manganese steel. Roller bearings throughout. Gear Ratio 3.78 to 1. Shafts 1 1/8 in. diameter.

ROAD CLEARANCE.—8.5 in. TYRES 6.00 x 16. Pressure 30 lbs.

TURNING CIRCLE.—38 ft. 2 in. right or left.

WHEELBASE 112 in. Springbase 123.13 in.

*Ford Motor Company of Australia Pty. Ltd., whose policy is one of continuous improvement, reserves the right to change specifications and prices at any time without notice or incurring liability to purchasers.*

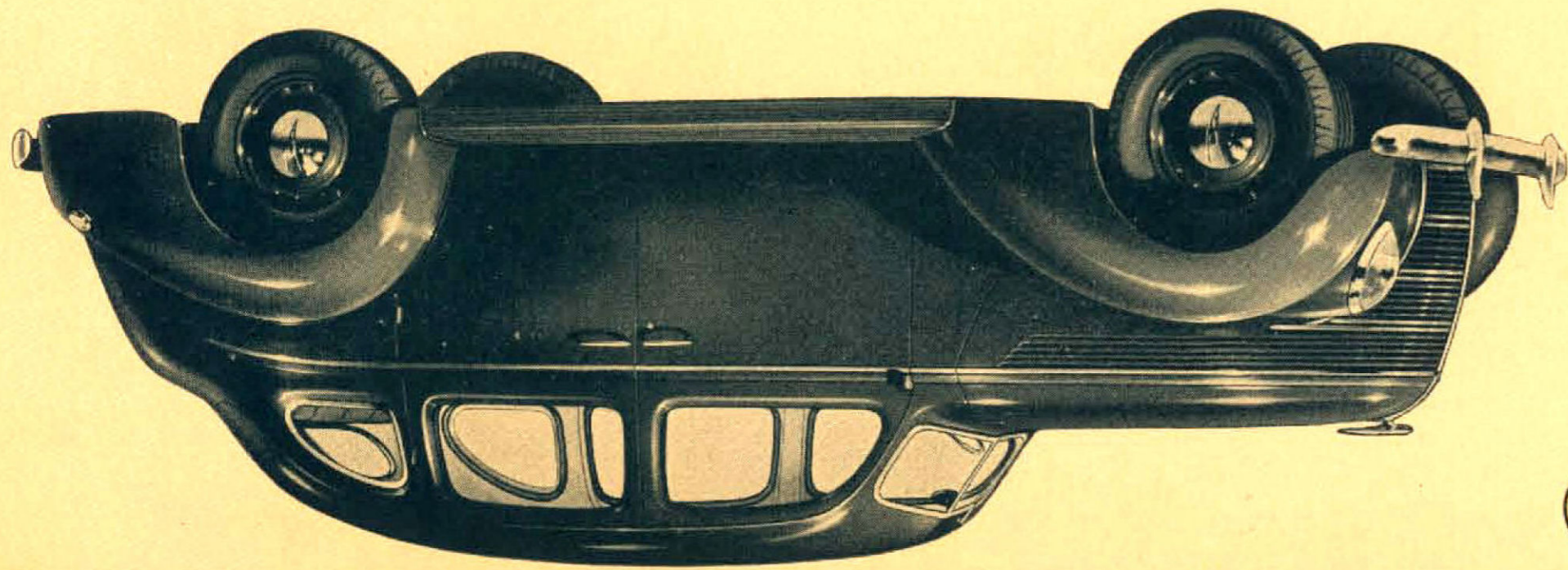
FORD MOTOR COMPANY OF AUSTRALIA PTY. LTD. (INCORPORATED IN VICTORIA)

M630/CM/V



## BUSINESS SEDAN

The low-priced, economical-to-operate car for the business user. Larger interior space. V-8 engine, proved for economy. Ford all-steel body. Safety glass all round. Big, built-in luggage trunk. An ideal sedan for business users and all who require economical operation with day-in, day-out dependability and low depreciation.

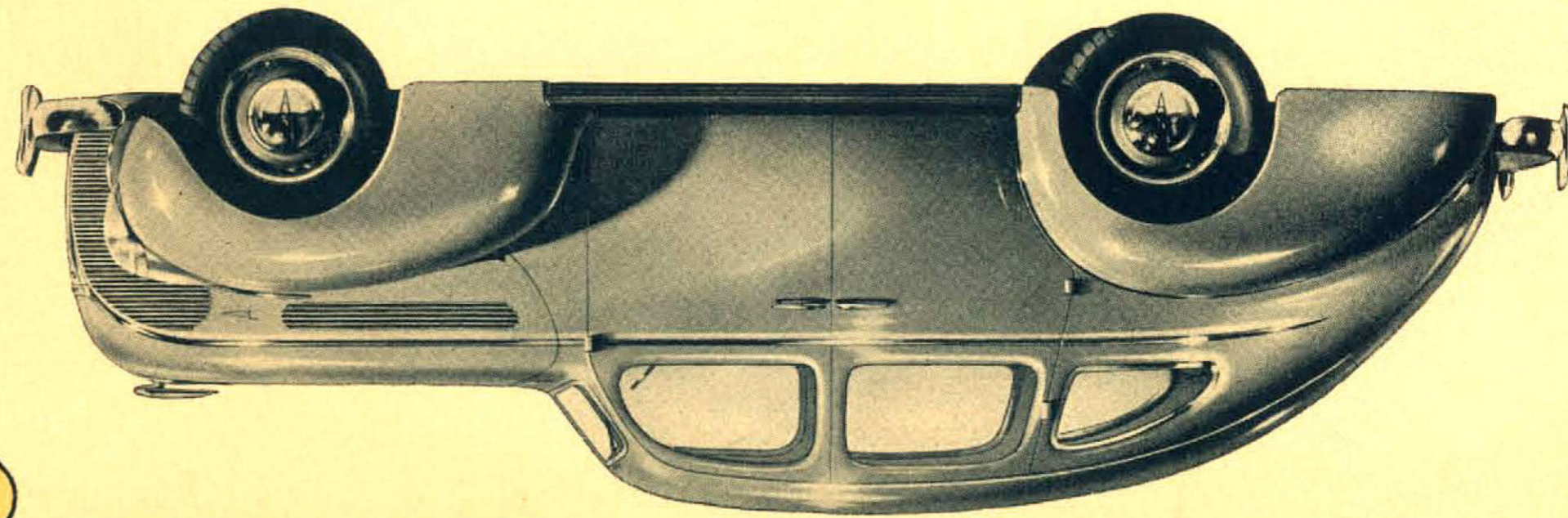


V-8 VALUE REACHES  
A WIDER FIELD

FOR 1938

## DE LUXE SEDAN

The biggest Ford V-8 ever built. A large, roomy, impressive sedan of striking beauty with spacious passenger accommodation and appointments of sheer luxury. Available in a wide range of body colours and specially designed interior ensembles. V-8 engine giving the economy of an ordinary "six," Ford all-steel body, with one-piece steel roof, steel sides and floor. Safety glass all round. Huge luggage compartment under smoothly streamlined rear end.



## SPECIFICATIONS

**ENGINE.**—V-8 90° I. Head. Piston displacement 221 cubic inches. Bore 3 1/16 in. Stroke 3 1/4 ins. H.P. Rating R.A.C. 50.00. Maximum B.H.P.: Business Series, 85 at 3,800 R.P.M.; De Luxe Series, 95 at 3,800 R.P.M. Lubrication—forced feed to all Main Connecting Rod and Camshaft bearings. Capacity 4 quarts. Cylinder head material—De Luxe Series, Aluminium. Business Series, Cast Iron.

**CRANKSHAFT.**—Special Ford cast alloy steel. Weight 63.8 lbs.; 3 main bearings; total main bearing surface, 40.5 sq. inches. Statically and dynamically balanced.

**CARBURETTOR.**—Dual down-draught carburettor with oil bath type air cleaner.

**FUEL SYSTEM.**—Engine driven fuel pump. Terne plate steel fuel tank mounted at rear; capacity 12 gallons.

**COOLING.**—Tube and fin type radiator. 362 sq. ins. cooling surface. Capacity 4 1/2 gallons. 4 Blade, 15 1/4 in. fan. Centrifugal water pumps, at front of each cylinder block.

**IGNITION.**—Battery coil and distributor. Distributor driven directly off end of camshaft. Full automatic-vacuum control.

**PASSENGER CAR CHASSIS.**

**CLUTCH AND TRANSMISSION.**—Dry Single Plate Clutch with plate pressure increased by centrifugal force. Diameter 9 in. Surface 75 sq. in. 3 Speed selective gear transmission. All gears silent helical type. Synchronised second and high gears.

**BRAKES.**—Four wheel cable and conduit operated internal expanding shoe type with controlled self-energising brake shoes. Adjustment by outside stud on each brake plate. Total braking area, 186 sq. in. Hand lever location—right side of steering wheel under instrument panel. Hand brake operates on all four wheels.

**SPRINGS.**—Ford transverse cantilever front and rear of chrome alloy steel. Controlled by adjustable double acting hydraulic shock absorbers. Spring leaves grooved to take pressure gun lubrication through lubrication nipple on tie bolt.

**FRAME.**—Special Ford design. Pressed carbon steel. Double drop, with X members. Channels extending to ends of frame. Main side members, depth 5 1/2 ins., width 2 in.

**STEERING GEAR.**—Worm and Roller. Ratio 18.2 to 1. Worm mounting—Two tapered roller bearings. Wheel diameter 17 in.

**FRONT AXLE.**—Special Ford carbon manganese steel. "I" beam reverse Elliott. Adjustable tapered roller wheel bearings.

**REAR AXLE.**—1/2 floating type. Spiral bevel gear with straddle mounted pinion. Material of Ford carbon manganese steel. Roller bearings throughout. Gear Ratio 3.78 to 1. Shafts 1 1/4 in. diameter.

**ROAD CLEARANCE.**—8.5 in. TYRES 6.00 x 16. Pressure 30 lbs.

**TURNING CIRCLE.**—38 ft. 2 in. right or left.

**WHEELBASE** 112 in. Springbase 123.13 in.



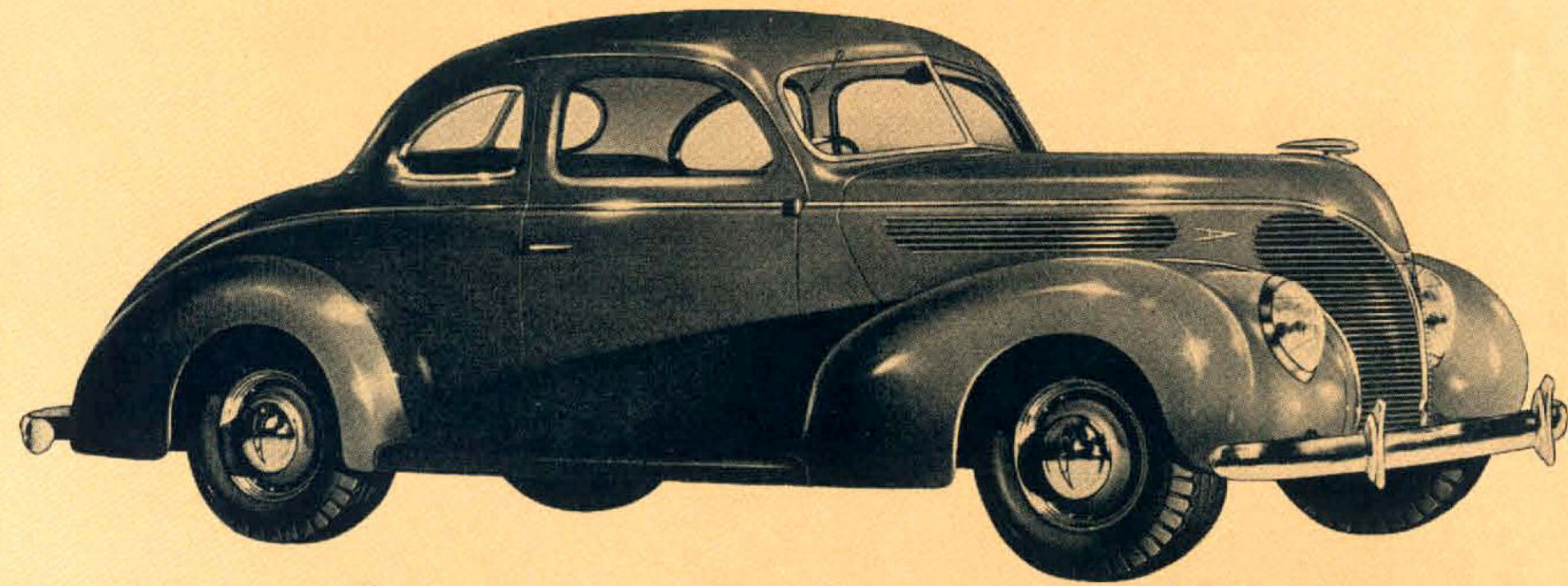
FOR 1938 FORD

*introduces*

TWO NEW V-8 CARS

*Ford Motor Company of Australia Pty. Ltd., whose policy is one of continuous improvement, reserves the right to change specifications and prices at any time without notice or incurring liability to purchasers.*

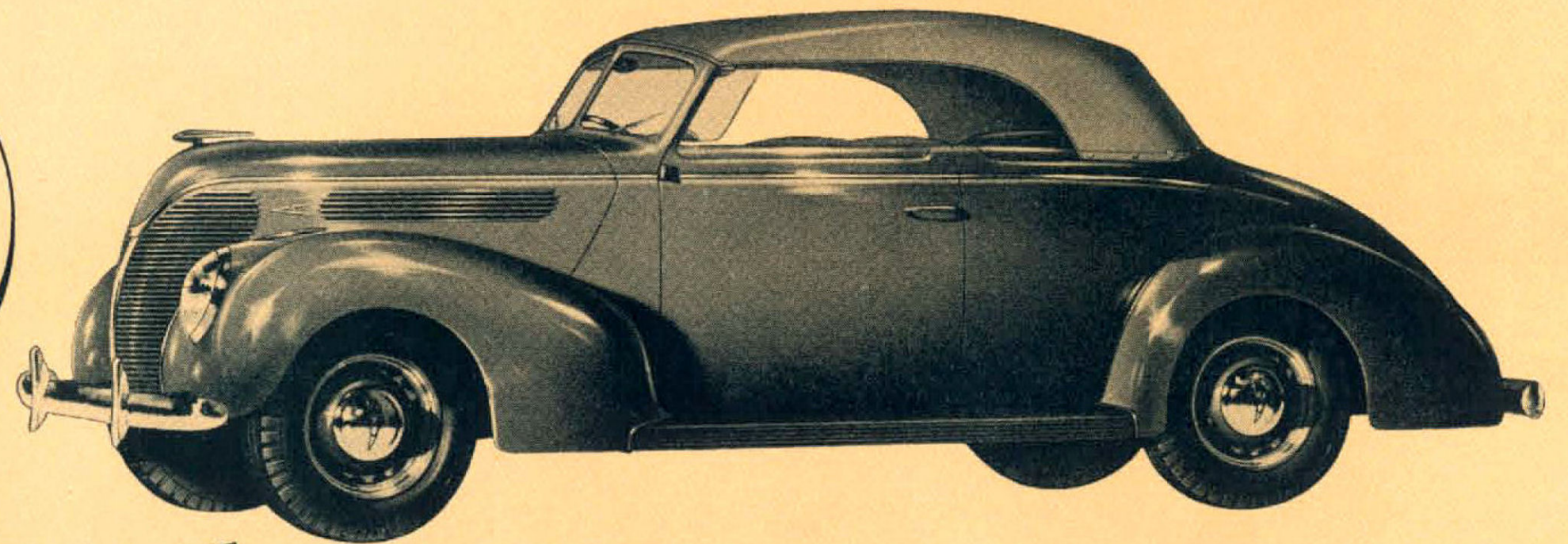




**DE LUXE CLUB COUPE**

The *convenient* car. Broad front seat carries three comfortably. Divided front seat-back gives access to rear seat. All passengers ride inside. All-steel body. Safety glass all round. The big luggage compartment is accessible from outside car and rear seat removes to give *extra* luggage carrying space.

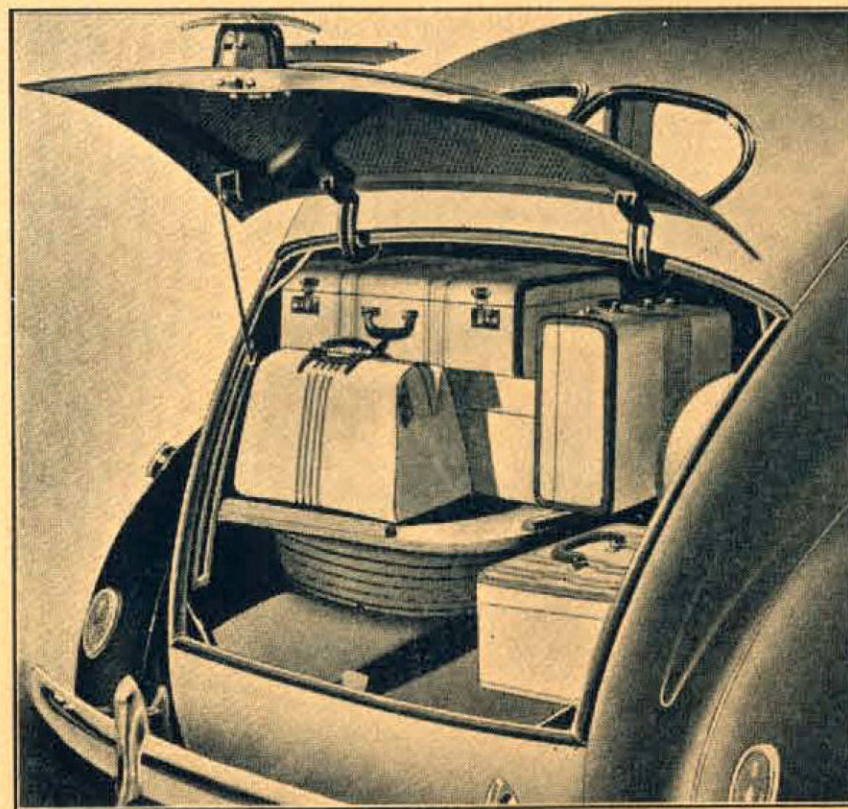
**V-8 VALUE  
REACHES A  
WIDER FIELD**



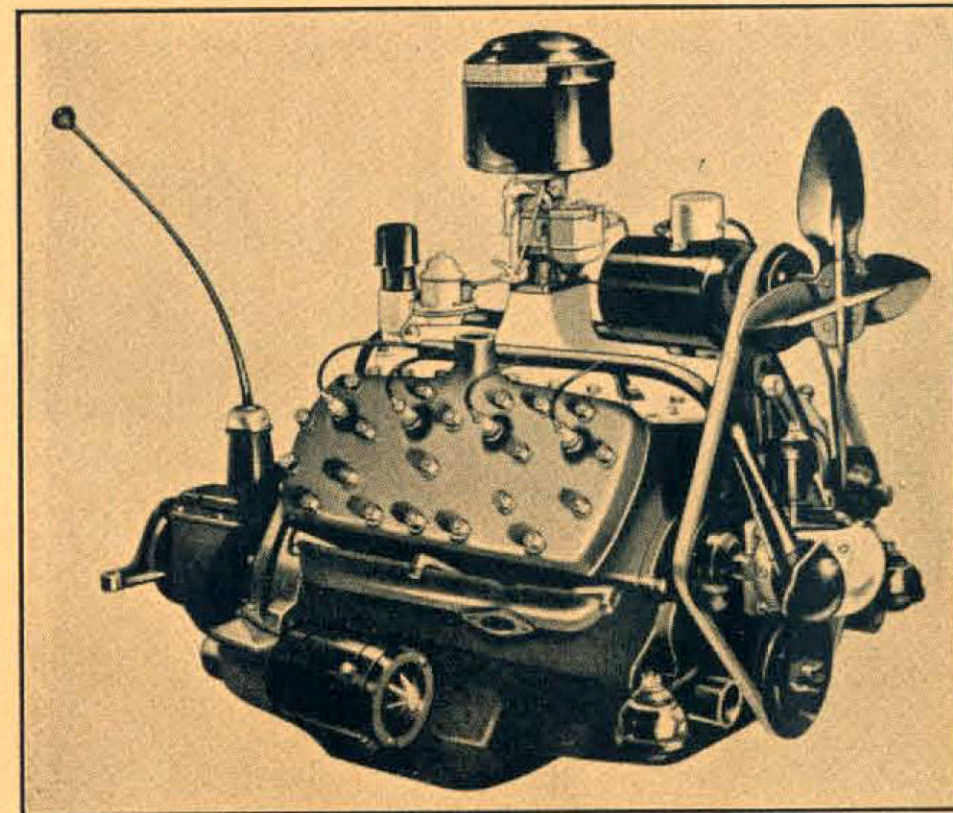
**DE LUXE CLUB ROADSTER**

Styled for the sporting owner. A spirited roadster that seats five or six under its handsome hood. V-8 engine with aluminium cylinder heads gives high performance with 6-cylinder economy. Capacious luggage compartment at rear. Safety glass windscreen. New range of body colours and trims.

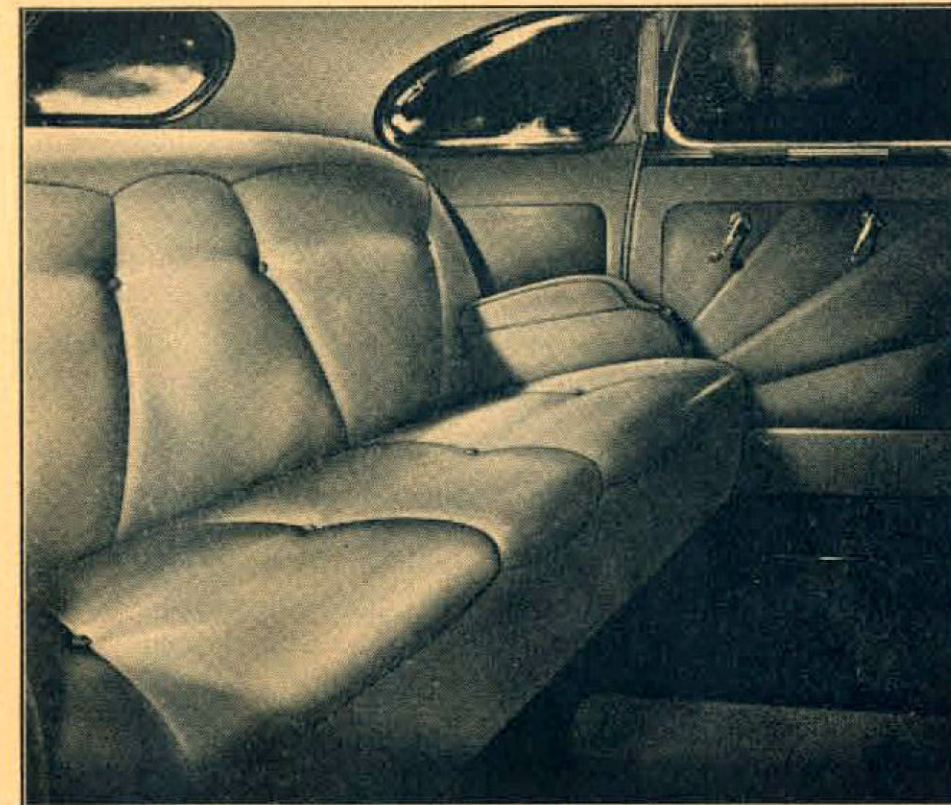
**A COUPE AND A ROADSTER ARE ALSO AVAILABLE IN THE BUSINESS SERIES—Built for economy, in first cost and operation.**



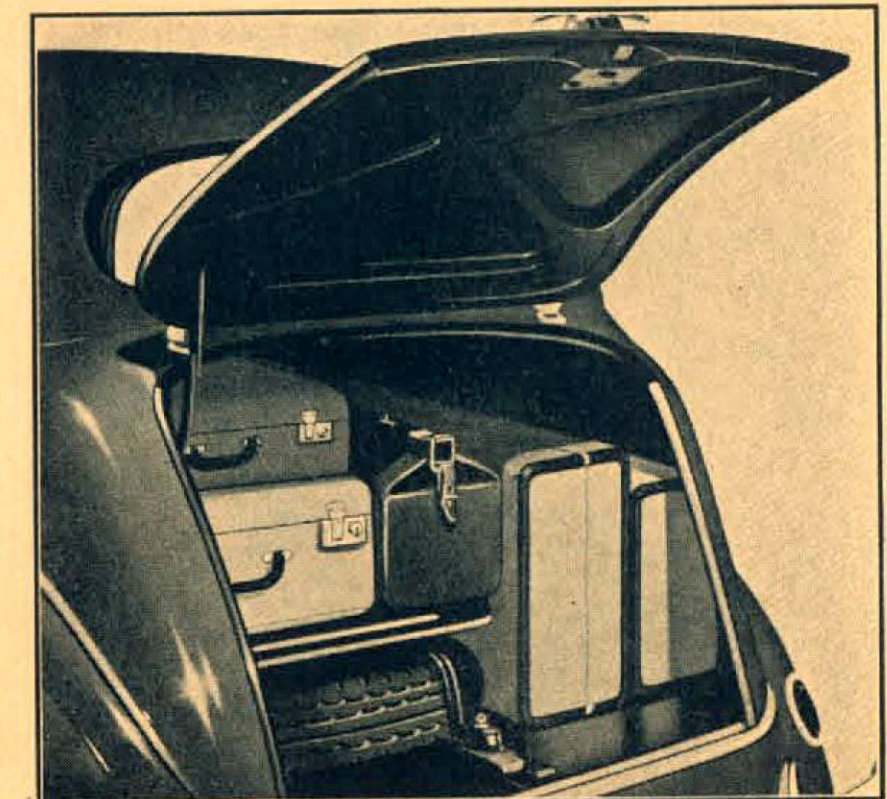
The new, smooth-sloping rear end of the De Luxe Sedan accommodates a considerably larger dustproof luggage compartment. It is reached by a wide door which opens from the bottom and closes flush with the rear panels. Door fastens with the new modern-design combination door handle, lock and number-plate holder and rear light.



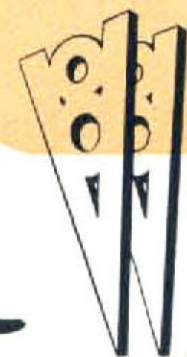
Ford's famous V-8 engine gives two unique advantages—8-cylinder performance; the operating economy of an ordinary "six". Service records and owner-driver tests have proved over 23 m.p.g. at average speeds. Many owners report up to 27 m.p.g. No other car within hundreds of pounds of Ford V-8 price has a V-8 engine and nearly 4,000,000 Ford owners know that *there is no substitute for V-8 performance.*



De Luxe closed-car interiors are the most luxurious Ford has ever created. Designed specifically for this new model, they set a standard in sheer restfulness, in their colour ensembles and convenient appointments, unequalled by any car at or near Ford V-8 price. A wide range of colours is available and the distinguished beauty of these new interiors matches their broad spaciousness.



On the Business Sedan the big, built-in, lock-up luggage trunk carries spare wheel and tools as well as several good-sized pieces of luggage. The door locks with the new combination handle, number-plate holder and light. On the Business Coupe and Business Roadster, rear seats are removable to give *extra* loading space for travellers and commercial users.



**TWO NEW FORD V-8 CARS • TWO DISTINCTIVE DESIGNS • EACH IN THREE BODY TYPES**