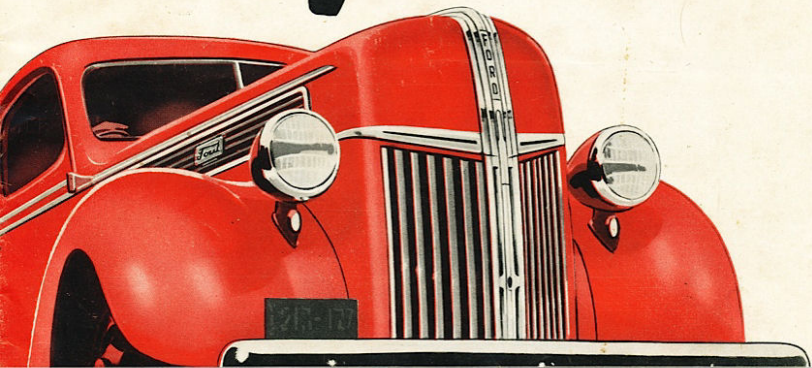


**WHAT DO
YOU HAUL?**

YOUR SPECIFIC REQUIREMENTS
FOR COMMERCIAL TRANSPORT
UNDER WAR CONDITIONS
CAN BE SUPPLIED AT
LOWER FIRST COST AND
LOWER OPERATING COST
BY

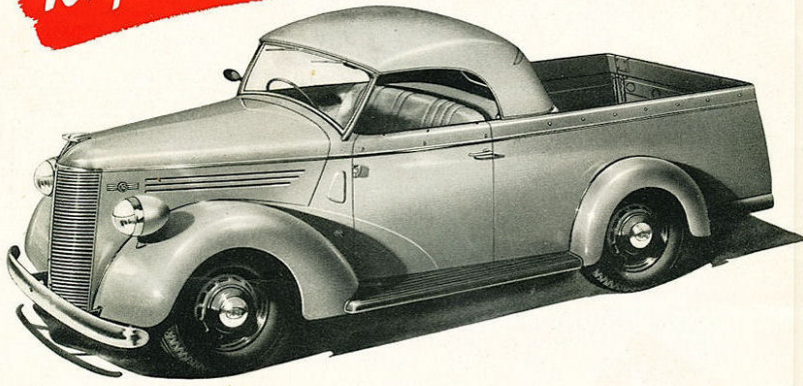
Ford V-8 Trucks



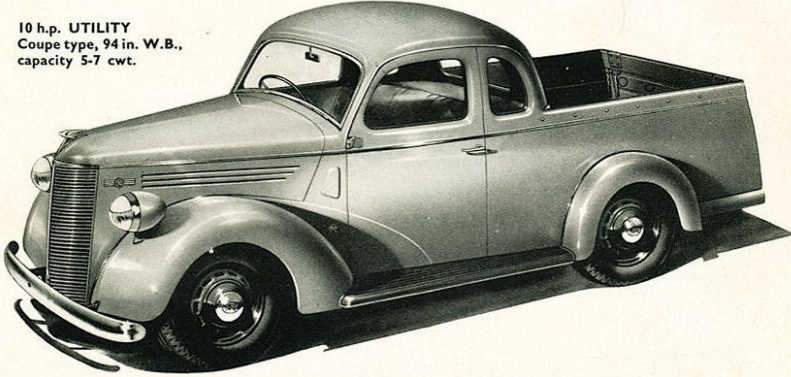
**FORD OFFERS FOR 1941 ★ ★ 26 TRUCK
MODELS • • 8 WHEELBASES (5 REGULAR, 3 C.O.E.)
• • WIDE BODY RANGE • • 2 V-8 ENGINES —
A FORD UNIT FOR 95% OF ALL AUSTRALIAN
TRUCK OPERATIONS!**

10 h.p. UTILITIES

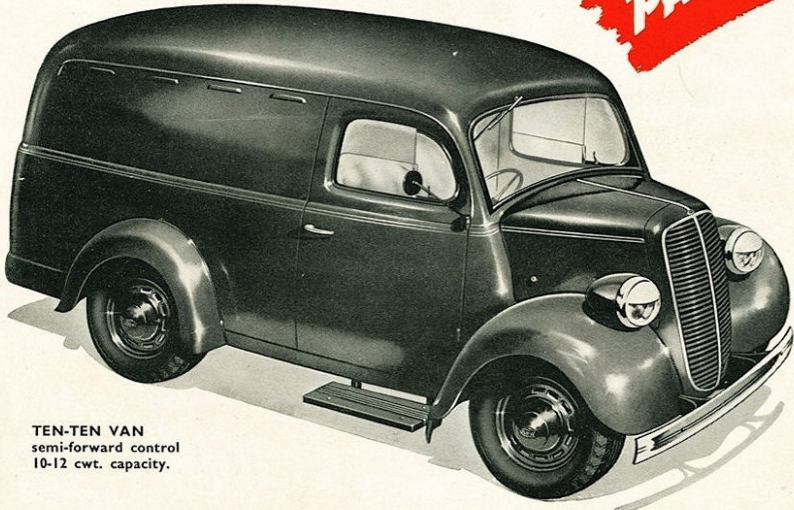
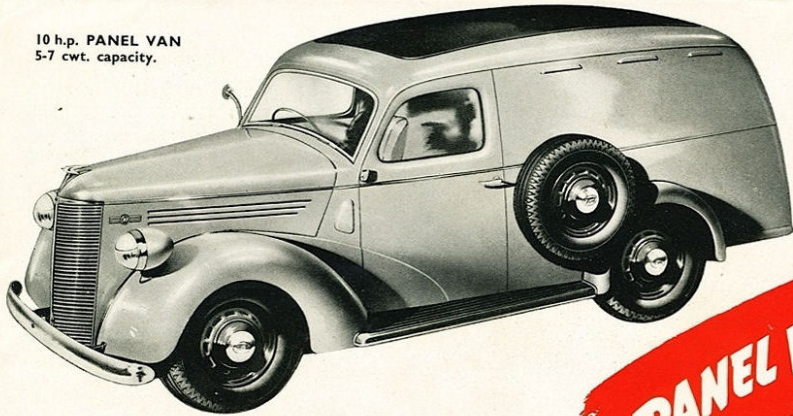
10 h.p. UTILITY
Roadster type, 94 in. W.B.,
capacity 5-7 cwt.



10 h.p. UTILITY
Coupe type, 94 in. W.B.,
capacity 5-7 cwt.



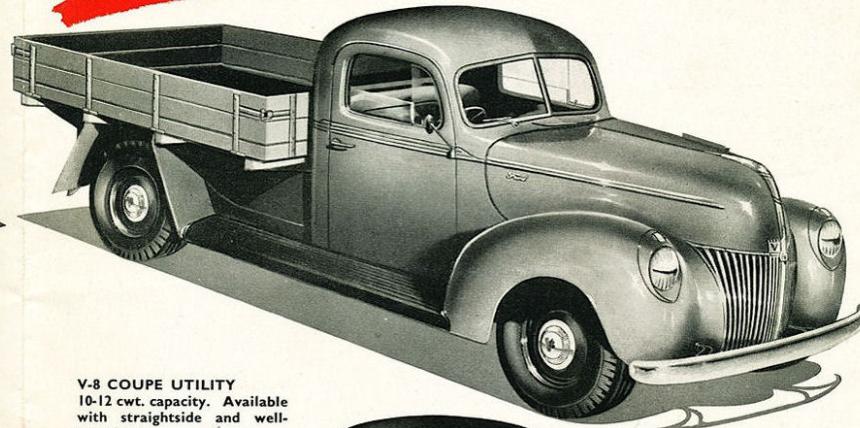
10 h.p. PANEL VAN
5-7 cwt. capacity.



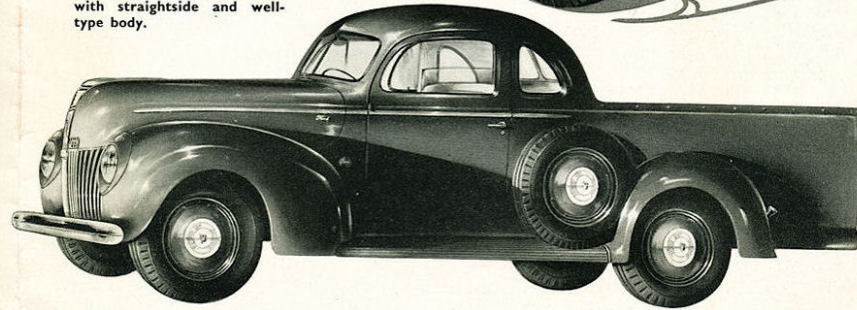
TEN-TEN VAN
semi-forward control
10-12 cwt. capacity.

V-8 UTILITIES

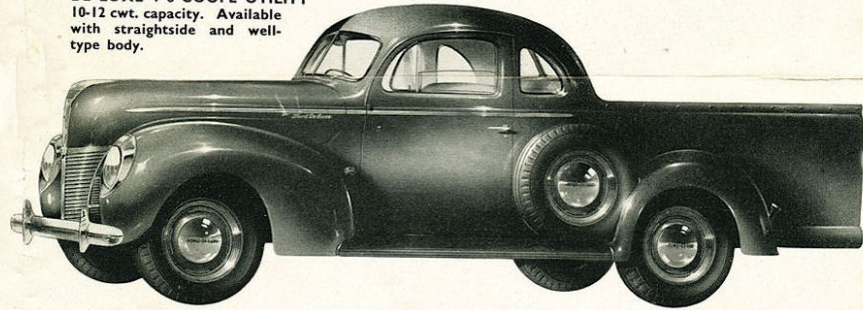
V-8 GENERAL UTILITIES
12 and 15 cwt. capacities.
Available as chassis, cab-
chassis and with straight-
side, platform, drop-
side and stakeside bodies.



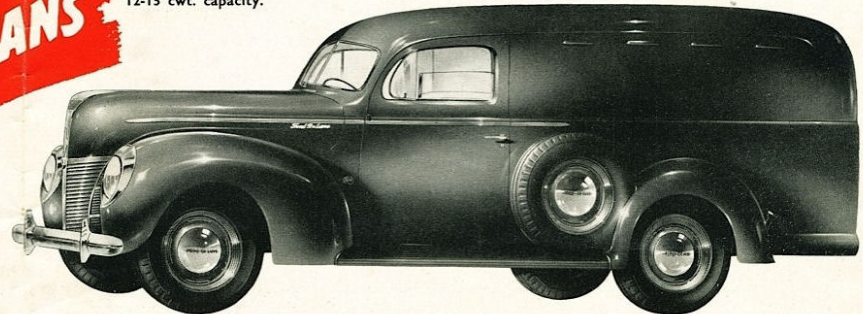
V-8 COUPE UTILITY
10-12 cwt. capacity. Available
with straight-side and well-
type body.



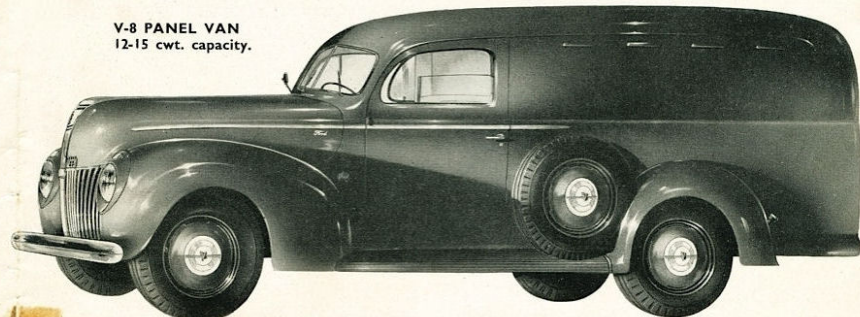
DE LUXE V-8 COUPE UTILITY
10-12 cwt. capacity. Available
with straight-side and well-
type body.



DE LUXE V-8 PANEL VAN
12-15 cwt. capacity.



V-8 PANEL VAN
12-15 cwt. capacity.



PANEL VANS

AND LOOK AT THE GREAT FORD LIGHT COMMERCIAL RANGE

THERE'S A FORD SPECIALISED UNIT FOR EVERY TRANSPORT NEED

Trucks	Torque (lbs. ft.)	Engine B.H.P.	Gearbox	Rear Axle	Tyres F.	Tyres R.	Gross Weight	Frame
122" W.B. 18 cwt.	170	95	3-speed	4.11	6.50 Truck Type	6.50 Truck Type	5500	Standard
122" W.B. 1-ton	170	95	3-speed	4.86	17 x 7.00 6-ply	17 x 7.00 8-ply	6500	Standard
122" W.B. 25-30 cwt.	170	95	4-speed	4.86	17 x 7.00 8-ply	17 x 7.50 8-ply	7350	Standard
134" W.B. 30-cwt.	170	95	4-speed	5.83	2-30 x 5 8-ply	2-32 x 6 8-ply	9000	Standard
134" W.B. 2-ton	170	95	4-speed	6.66	2-30 x 5 8-ply	4-30 x 5 8-ply	11800	Standard
134" W.B. 3-ton	170	95	4-speed	6.66	2-32 x 6 10-ply	4-32 x 6 10-ply	14500	Standard
134" W.B. 4-ton	170	95	4-speed	6.66	2-7.00 x 20	4-34 x 7 10-ply	16000	Dual
134" W.B. 5-ton	184	100	4-speed	HD2-speed	2-34 x 7 10-ply	4-34 x 7 10-ply	18000	Dual
158" W.B. 30-40 cwt.	170	95	4-speed	6.66	2-32 x 6 8-ply	2-32 x 6 10-ply	9500	Standard
158" W.B. 2-ton	170	95	4-speed	6.66	2-30 x 5 8-ply	4-30 x 5 8-ply	11800	Standard
158" W.B. 3-ton	170	95	4-speed	6.66	2-32 x 6 10-ply	4-32 x 6 10-ply	14500	Standard
158" W.B. 4-ton	170	95	4-speed	6.66	2-7.00 x 20	34 x 7 10-ply	16000	Dual
158" W.B. 5-ton	184	100	4-speed	HD2-speed	2-34 x 7 10-ply	4-34 x 7 10-ply	18000	Dual
176" W.B. Bus	170	95	4-speed	6.66	2-7.50 x 18	4-7.50 x 18	14500	Dual
176" W.B. 3-ton	170	95	4-speed	6.66	2-32 x 6 10-ply	4-32 x 6 10-ply	14500	Dual
176" W.B. 4-ton	170	95	4-speed	6.66	2-7.00 x 20	4-34 x 7 10-ply	16000	Dual
176" W.B. 5-ton	184	100	4-speed	HD2-speed	2-34 x 7	4-34 x 7 10-ply	18000	Dual
194" 5-ton	184	100	4-speed	HD2-speed	2-34 x 7	4-34 x 7 10-ply	18000	9" Special
134" W.B. COE 3-ton	170	95	4-speed	6.66	2-32 x 6 10-ply	4-32 x 6 10-ply	14500	Standard
134" W.B. COE 4-ton	170	95	4-speed	6.66	2-7.00 x 20	4-34 x 7 10-ply	16000	Dual
134" W.B. COE 5-ton	184	100	4-speed	HD2-speed	2-34 x 7	4-34 x 7 10-ply	18000	Dual
158" W.B. COE 3-ton	170	95	4-speed	6.66	2-32 x 6 10-ply	4-32 x 6 10-ply	14500	Standard
158" W.B. COE 4-ton	170	95	4-speed	6.66	2-7.00 x 20	4-34 x 7 10-ply	16000	Dual
158" W.B. COE 5-ton	184	100	4-speed	HD2-speed	2-34 x 7	4-34 x 7 10-ply	18000	Dual
101" 3-ton	170	95	4-speed	6.66	2-32 x 6 10-ply	4-32 x 6 10-ply	14500	Standard
194" W.B. Bus	170	95	4-speed	6.66	2-7.50 x 18	4-7.50 x 18 8-ply	14500	Standard

Utilities	Motor	Axle Ratio	Tyres	Trim	Wheel Colour	Seat
Standard Coupe 112" W.B.	V8 30 h.p.	4.11 to 1	5-6.00 x 16 4-ply	Split hide	Black	
De Luxe Coupe 112" W.B.	V8 30 h.p.	4.11 to 1	5-6.00 x 16 4-ply	Chrome leather	Body colour	
10 h.p. 94" W.B.	10 h.p. 4 cyl.	5.55 to 1	5-16 x 5.00 4-ply	Fabricoid (Roadster)	Black	
E83W 90" W.B.	10 h.p. 4 cyl.	6.83 to 1	5-18 x 5.00 4-ply	Split Hide (Coupe)	Black	
PANEL VANS:						
Standard Van 112" W.B.	30 h.p.	4.11 to 1	5-16 x 6.00 6-ply	Pontine	Black	Full width
De Luxe Van 112" W.B.	30 h.p.	4.11 to 1	5-16 x 6.00 6-ply	Chrome leather	Body colour	Full width
Standard Van 122" W.B.	30 h.p.	4.11 to 1	4-16 x 6.50 6-ply Truck type	Pontine	Black	Full width
10 h.p. Van 94" W.B.	10 h.p.	5.55 to 1	5-16 x 5.00 4-ply	Pontine	Black	Bucket
Ten-Ten Van 90" W.B.	10 h.p.	6.83 to 1	5-18 x 5.00 4-ply	Pontine	Black	Half seat

FRONT BUMPER BAR—standard all models. OIL BATH AIR CLEANER—standard all models. FOUR HYDRAULIC SHOCK ABSORBERS—standard all models except 15-18 cwt. Utility, which

has two front shock absorbers only. SAFETY GLASS ALL ROUND—standard in all models except rear door windows of panel vans.

Ford Motor Company of Australia Pty. Ltd., whose policy is one of continuous improvement, reserves the right to change specifications and prices at any time without notice or incurring liability to purchasers.