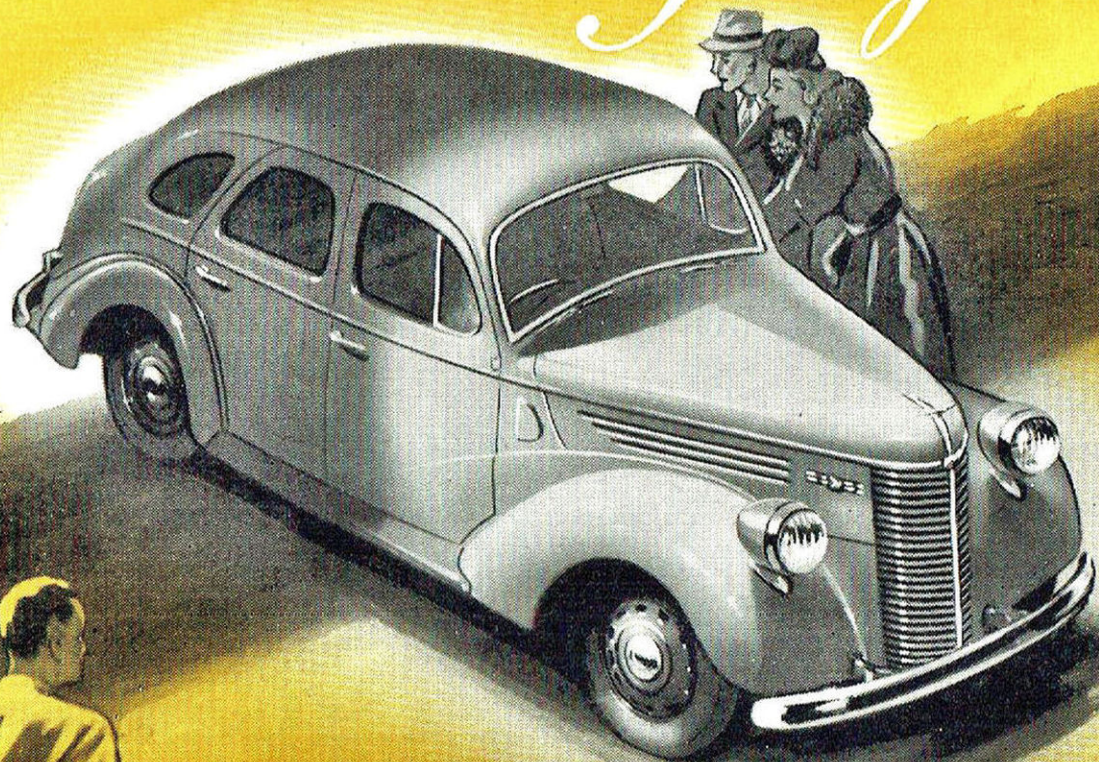


ONCE AGAIN — TOP VALUE
IN THE "TENS" . . .

THE NEW *Perfect*



CHECK THESE EXTRA-VALUE FEATURES OF PREFECT 10 H.P.

SMARTEST INTERIORS AND FULL FOUR-PASSENGER COMFORT. Upholstery is tailored to keep its shape, and to stay smart. Doors and seats in distinctive pleated motif, pleats individually padded. Trim design gives that much needed support behind the knees. Front seat backs divided, either section can tip forward. Front seats on tubular steel frames, generous floor space for car passengers, no foot wells.

NEW ALL-STEEL BODY with steel roof top completely manufactured by Ford-Australia.

GENEROUS APPOINTMENTS. Armrests in rear compartment, parcel shelves front and rear. Individual ash trays for all four passengers, new, easy front seat adjustment.

CONTROLLED AND COMPLETE VENTILATION with opening windscreen and controlled ventilating front quarter windows, plus cowl side ventilators.

BIGGER LUGGAGE BOOT that blends with the body lines. It is completely waterproof and beam of tail-light serves to light up the interior at night.

CENTER-POISE RIDING COMFORT. Passengers ride cradled between the axles. This, coupled with full torque tube drive, radius rods and new shock absorbers gives a really smooth ride.

SELF-ENERGISING BRAKES, fully compensated. Trigger-type handbrake mounted below instrument panel.

THRIFTY 10 H.P. ENGINE. During the war, PREFECT engine was widely chosen for use when dependability was essential, in radar sets, marine units, fire pumps. Prefect's engine now returns from active service with detail improvements that further increase economy and reliability.

Ford Motor Company of Australia Pty. Ltd. (Inc. in Victoria), whose policy is one of continuous improvement, reserves the right to change specifications and prices at any time without notice or incurring liability to purchasers.

FORD MOTOR COMPANY OF AUSTRALIA PTY. LTD. (INC. IN VIC.) REG. OFFICE: GEELONG, VICTORIA.
HASTINGS DEERING SERVICE LTD. *Sole Metropolitan Distributors. MO 412 (25 lines)*

FORD MOTOR COMPANY OF AUSTRALIA PTY. LTD. (INC. IN VIC.) REG. OFFICE: GEELONG, VICTORIA.

Ford Motor Company of Australia Pty. Ltd. (Inc. in Victoria), whose policy is one of continuous improvement, reserves the right to change specifications and prices at any time without notice or incurring liability to purchasers.

CHECK THESE EXTRA-VALUE FEATURES OF PERFECT 10 H.P.

BIGGER LUGGAGE BOOT that blends with the body lines. It is completely waterproof and beam of tail-light serves to light up the interior at night.

CENTER-POISE RIDING COMFORT. Passengers ride cradled between the axles. This, coupled with full torque tube drive, radius rods and new shock absorbers gives a really smooth ride.

SELF-ENERGISING BRAKES, fully compensated. Trigger-type handbrake mounted below instrument panel.

THIRTY 10 H.P. ENGINE. During the war, PERFECT engine was widely chosen for use when dependability was essential, in radar sets, marine units, fire pumps. Perfect's engine now returns from active service with detail improvements that further increase economy and reliability.

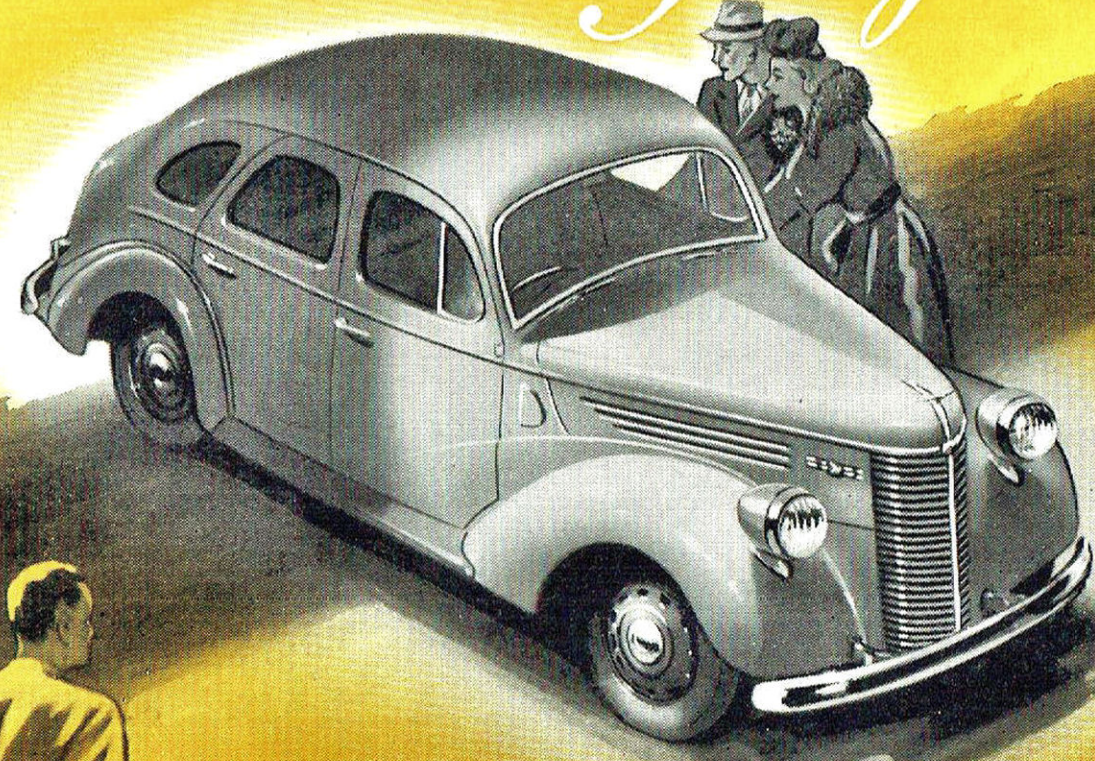
SMARTEST INTERIORS AND FULL FOUR-PASSENGER COMFORT. Upholstery is tailored to keep its shape, and to stay smart. Doors and seats in distinctive pleated motif, pleats individually padded. Trim design gives that much needed support behind the knees. Front seat backs divided, either section can tip forward. Front seats on tubular steel frames, generous floor space for car passengers, no foot wells.

NEW ALL-STEEL BODY with steel roof top completely manufactured by Ford-Australia. Armrests in rear compartment, parcel shelves front and rear. Individual ash trays for all four passengers, new, easy front seat adjustment.

CONTROLLED AND COMPLETE VENTILATION with opening windscreen and controlled ventilating front quarter windows, plus cow side ventilators.

ONCE AGAIN — TOP VALUE IN THE "TENS" . . .

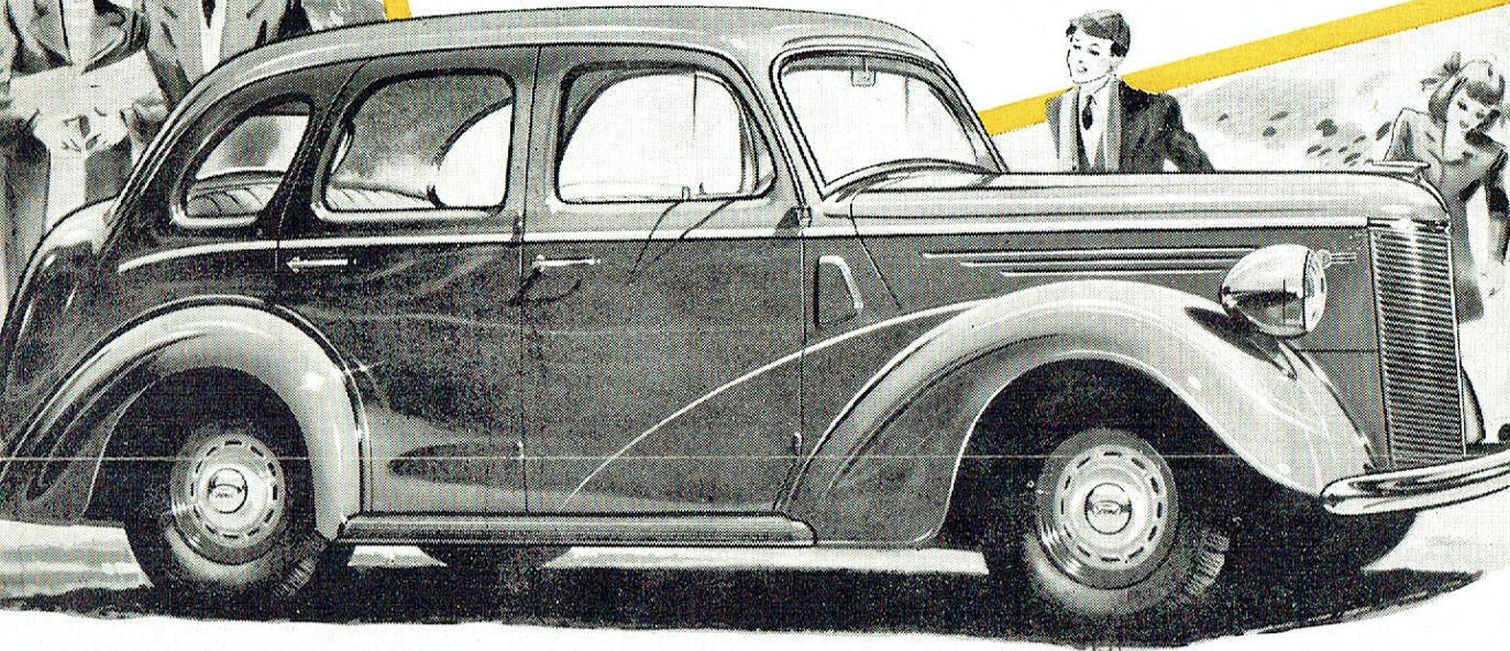
THE NEW Perfect



THE NEW

Prefect

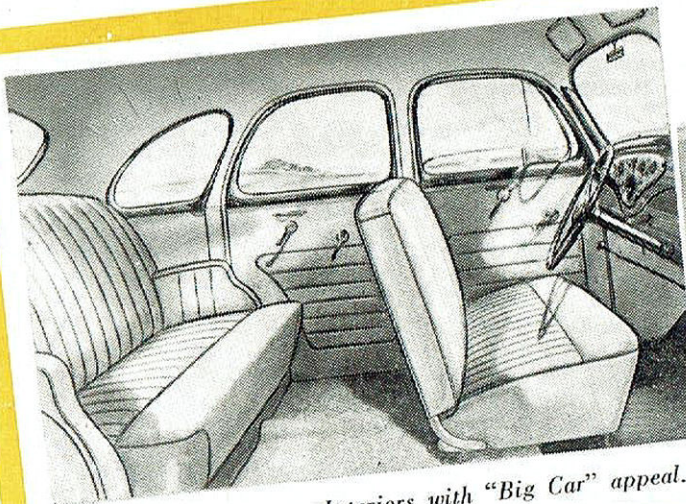
THE ECONOMY TEN
WITH BIG CAR
APPEAL!



A New Sparkling Eye-ful of Style . . .

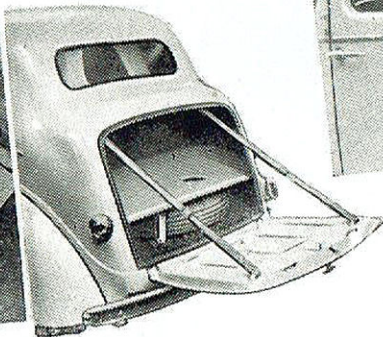
A New All-providing Idea of 10 h.p. Quality, Roominess and Economy.

Top value among English "Tens," PREFECT now brings new standards of style, convenience and big car appeal to 10 H.P. motoring. The new all-steel sedan body is roomy and comfortable. It has hinged windscreen and controlled draught-free ventilating windows. Upholstery, in a choice of attractive shades, is tailored to keep its smart shape. Powering the PREFECT is the engine widely chosen for war-time reliability — in transport, fire pumps, generating sets, marine units — an engine with unique economy and dependability.



Interiors with "Big Car" appeal.

The new roomy boot
blends with the body
lines.



Controlled and complete
ventilation.