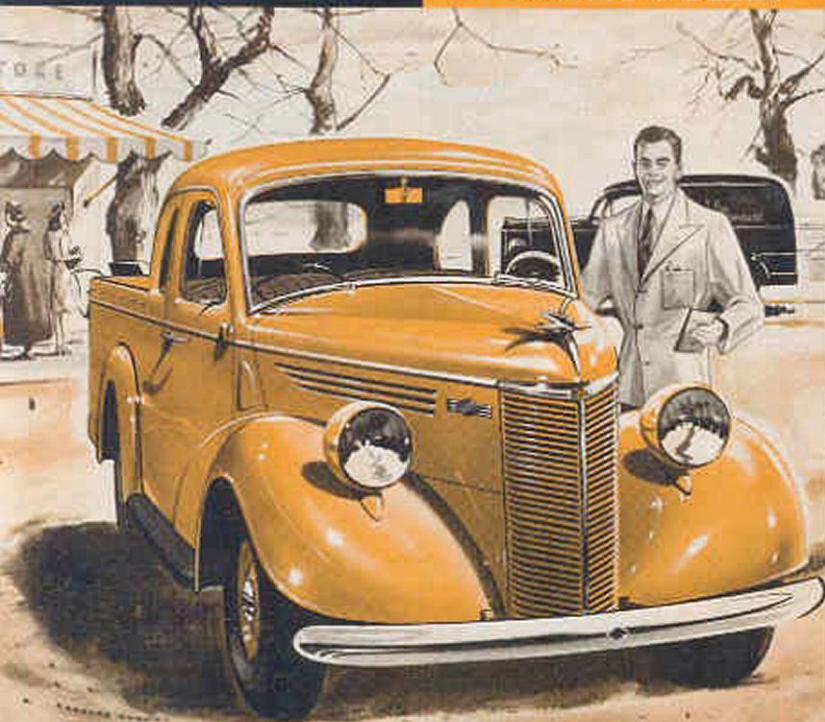


*Money-Savers
and
Pride-Builders*

Perfect

• 10 HP •
UTILITIES



For the go-ahead business man who needs a nimble delivery unit, the Perfect 10 h.p. combines nippy performance, low-cost operation and — this is quite important — good looks.

Perfect

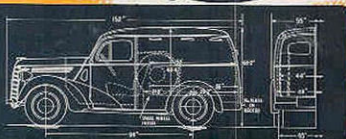
• 10 HP •
UTILITIES



*Styled for Success
Engineered for Endurance*

THE COUPE

A Coupe Utility, with its private car styling creates an excellent business impression. Carrying 5 to 6 cwt., its 10 h.p. running costs keep delivery expenses down, while Ford dependability and local service mean modest maintenance bills.



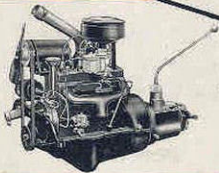
*Unusually Smart
and always Economical*

THE PANEL VAN

When bulky parcels of perishable or fragile goods must be speedily delivered, the Perfect Panel Van is grand for such light-weight (7 cwt.) work, providing protection and security together with a smart advertising display.

Powered by a Long Life
FORD 10 HP Engine

Six years of war proved that no duty for which it was chosen, was too arduous for the Ford 10 h.p. engine. An endless diversity of power-providing jobs proved the design-value and strength of the Perfect engine features, such as the 3-bearing crankshaft, statically and dynamically balanced for vibrationless running; aluminum alloy pistons; permanently-adjusted precision-set valves; pressure-feed lubrication, and replaceable cartridge type oil filter.



SPECIFICATIONS 10 H.P.

Perfect

ENGINE — Four cylinders cast integral with top half of crankcase. Cylinder block material grey iron with high steel content. Bore, 2.5 in. Stroke, 3.64 in. Capacity, 71.50 cu. in. R.A.C. rating, 10 H.P. Three-bearing counter-balanced crankshaft of special Ford cast alloy steel. Aluminium alloy pistons.

ENGINE LIGHTS SYSTEM — Full pressure feed by submerged gear pump to crankshaft main bearings, camshaft and connecting rod bearings. Gudgeon pins and cylinder walls splash lubricated. Cartridge type oil filter keeps oil clean and prolongs engine life.

IGNITION — Battery and coil. Automatic advance and retard. Distributor, mounted in cylinder-head. Firing order, 1, 2, 4, 3.

FUEL SUPPLY — 7 gallon tank in rear. Diaphragm type fuel pump driven from camshaft. Down-draught carburettor with easy starting device.

COOLING SYSTEM — Thermo siphon. Two-bladed fan driven by "V" belt. Tube and fin-type radiator.

CLUTCH — Dry single plate, spring encased. Heavy duty ball thrust release bearing.

Gears — Selective, sliding, helically-cut constant mesh. Synchronised top and intermediate.

BEARINGS — Ratio, 3.55 to 1. $\frac{3}{4}$ " floating type with radius rod and torque tube drive. Spiral bevel drive pinion and gear. Roller bearings throughout.

CHASSIS FRAME — Double drop type giving low centre of gravity. Depth, 4 in. Flange width, 14 $\frac{1}{2}$ in. Three heavy cross members. Rear cross member strengthened. Side members reinforced from centre to rear cross member forming box sections. Radius rods front and rear.

SHOCK ABSORBERS — Double acting hydraulic on all four wheels.

STEERING — Worm and nut type, 10 to 1 ratio.

TIRES — Five 5.00 x 16 tyres.

BRAKES — Foot pedal, internal expanding, two shoe, automatically compensated type, 10 in. diam. drums. Foot brake operates on all wheels, hand brake on rear wheels. Hand brake lever mounted under instrument panel.

ELECTRIC EQUIPMENT — Two brush generator. Compensated voltage control.

WORKSPACE — 91 in. **SPRINGBASE** — 107 $\frac{1}{2}$ in. **TRUCK** — 45 in.

MAXIMUM CARRYING CAPACITY (GROSS VEHICLE WEIGHT) — 2,200 lbs. for Coupe Utility, 2,700 lbs. for Panel Van.

Ford Motor Company of Australia Pty. Ltd., whose policy is one of continuous improvement, reserves the right subject to such regulations as may from time to time apply to change specifications and prices at any time without notice to intending holders or purchasers.



From the heart of Ford manufacturing in Australia.

FORD MOTOR COMPANY OF AUSTRALIA PTY. LTD.

(Incl. in V.T.C.)

REG. OFFICE: GEELONG, VICTORIA

Money-Saver and Pride-Build

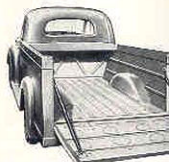
**FULL COUPE COMFORT
KEY TO NEW VENTURE**



Embodying all the essential factors for comfortable travel and tension-free driving, the Perfect Coupe provides relaxation protected against the elements of weather.

An important factor contributing to agreeable conditions for passengers is the Perfect controllable ventilation system which tempers the extremes of sunny days and rainy nights. Ample leg-room, a type handbrake under the dash, compact instrument cluster . . . leather-trimmed upholstery at an extra cost . . . are just a few of the valuable features built into every Perfect Utility.

STURDY STEEL-LINED



In character with the sturdy set-up of the Perfect Utility, the body construction includes welded all-steel panels inside and outside; steel skid-plates for loading and prevent chafing; covered suspension chains for strength and quietness, while the ample width of the tail-gate opening and low-level lifting and shifting.

