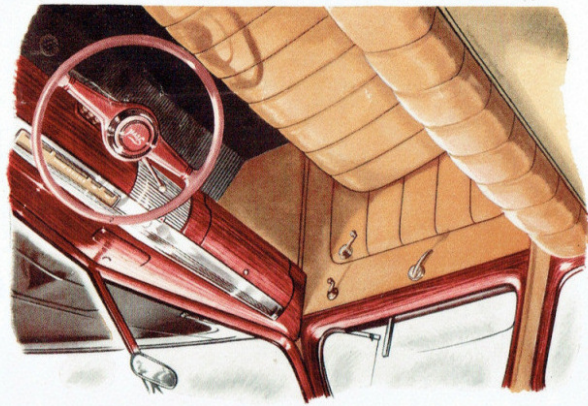


**THE NEW FORD V8**

*Coupe Utility*



are broad and rear window is of one-piece curved glass. Pivoted front-quarter windows provide draughtless ventilation in any weather. Evidence of complete passenger car appointments is everywhere—in smartly grained instrument panel and window reveals, wide parcels shelf beneath rear window, glove box and ash tray in instrument panel, sun visors and adjustable seat.

Step inside this new Coupe, see how extra inches have been added to give ample head room, leg room and elbow room for 3 big people. And, by the way, the relaxing comfort of that wide, deep seat will last for years. Every pleat is individually padded, tailoring is done with cleverly concealed but extra strong stitching. For panoramic vision the windscreen is wide and deep, side windows

... OF A SPACIOUS 3-PASSENGER COUPE ...

ALL THE *Style and Comfort*

DETAILS OF

# FORD V8

## *Streamline* COUPE UTILITY AND PANEL VAN

### IMPORTANT ADVANCEMENTS IN THE V8 ENGINE

- Fixed connecting rod bearings of the individual locked-in type for greater durability and oil economy.
- New aluminium alloy pistons for improved performance. Four piston rings for greater oil economy.
- New positive rear main bearing oil seal to conserve oil.
- Cartridge type filter, keeps oil clean and reduces engine wear.
- New crankshaft with built-in traps to catch any injurious sediment. Crankshaft has two oil holes in each crank pin.
- Engine front supports of oil-resistant rubber.
- High pressure, larger capacity oiling system for long engine life.
- Ignition wiring neoprene covered—oil and heat resistant.
- New balanced carburetion, stabilizes air-fuel ratio under all conditions. Increased economy and performance.
- Valve springs shot-blasted and rust-proofed for longer life.
- Hard alloy steel valve inserts for intake and exhaust valves.
- Pressure valve radiator cap prevents loss of water when operating in extreme heat.
- New long-life voltage regulator automatically controls generator output.

**TRANSMISSION**—Single plate clutch with plate pressure increased by centrifugal force. Three speed transmission, all gears silent helical type. Gearshift lever on steering column.

**REAR AXLE AND DRIVE**—Three-quarter floating rear axle, spiral bevel gears with straddle mounted pinion.

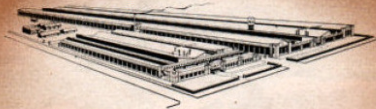
**BRAKES**—Oversize hydraulics with self-centering action. Total lining area 162 square inches. Handbrake lever located under instrument panel operates mechanically on rear wheels.

**FRAME**—Special Ford design. Double drop with X-members which form full box sections where they join side members.

**WHEELBASE**—114 inches. **TYRES**—5-6.00 x 16 6-ply. **WHEELS**—5-16 x 1.0. **CAPACITY**—10 cwt. Maker's declared Gross Vehicle Weight, 4,500 lbs. **SHOCK ABSORBERS**—4 double-acting, aero-type. **LIGHTING**—Sealed beam headlamps.

### BODY INTERIOR APPOINTMENTS

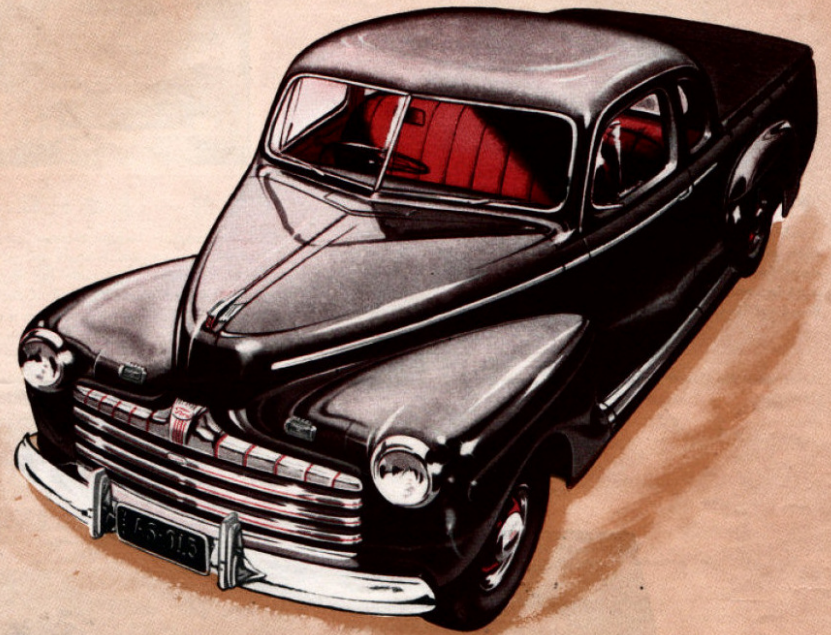
Controlled ventilating front quarter windows. Safety glass all round. Full width adjustable seat in both Coupe and Panel Van. Instrument panel grained wood design with bright metal. Grained window reveals. Interior light. Locking glove compartment. Engine bonnet lock under instrument panel. Cigar lighter, ash tray. Combination steering and ignition lock, illuminated at night for convenience of driver. Arm rest on driving side door. Dual sun visors.



From the home of Ford Manufacturing in Australia

**FORD MOTOR COMPANY**  
OF AUSTRALIA PTY. LTD.

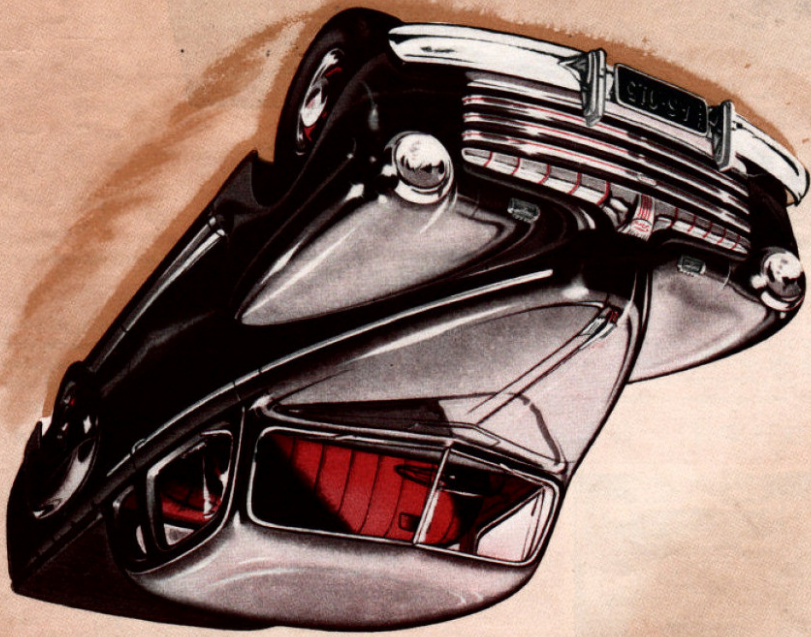
(Incorporated in Victoria)  
REGISTERED OFFICE: GEELONG, VICTORIA



THE NEW FORD V8  
*Coupe Utility*

Ford Motor Company of Australia Pty. Ltd., whose policy is one of continuous improvement, reserves the right, subject to such regulations as may from time to time apply to change specifications and prices at any time without notice or incurring liability to purchasers.

# THE NEW FORD V8 *Coupe Utility*



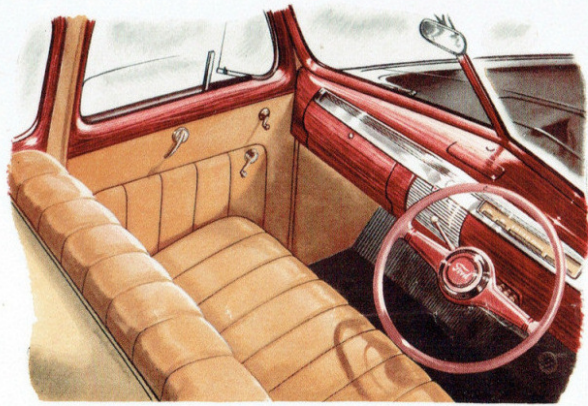
ALL THE

*Style and Comfort*

OF A SPACIOUS 3-PASSENGER COUPE . . .

Step inside this new Coupe, see how extra inches have been added to give ample head room, leg room and elbow room for 3 big people. And, by the way, the relaxing comfort of that wide, deep seat will last for years. Every pleat is individually padded, tailoring is done with cleverly concealed but extra strong stitching. For panoramic vision the windscreen is wide and deep, side windows

are broad and rear window is of one-piece curved glass. Pivoted front-quarter windows provide draughtless ventilation in any weather. Evidence of complete passenger car appointments is everywhere—in smartly grained instrument panel and window reveals, wide parcels shelf beneath rear window, glove box and ash tray in instrument panel, sun visors and adjustable seat.



# FORD V8

DETAILS OF

*Streamline*  
COUPE UTILITY  
AND PANEL VAN

## IMPORTANT ADVANCEMENTS IN THE V8 ENGINE

- Fixed connecting rod bearings of the individual locked-in type for greater oil economy.
- Xec aluminum alloy pistons for improved performance. Four piston rings for greater oil economy.
- Xec positive rear main bearing oil seal to conserve oil.
- Cartridge type filter, keeps oil clean and reduces engine wear.
- Xec crankshaft with built-in traps to catch any injurious sediment. Crankshaft has two oil holes in each crank pin.
- Engine front supports of oil-resistant rubber.
- High pressure, larger capacity oiling system for long engine life.

## TRANSMISSION

—Single plate clutch with plate pressure increased by centrifugal force. Three speed transmission, all gears silent behind type. Gearshift lever on steering column.

## REAR AXLE AND DRIVE

—Three-quarter floating rear axle, spiral bevel gears with staddle mounted pinion.

## SHAKES

—Oversize hydraulics with self-centering action. Total lining area 162 square inches. Handbrake lever located under instrument panel operates mechanically on rear wheels.

## FRAME

—Special Ford design. Double drop with X-members which form full box sections where they join side members.

## WHEELBASE—TIRES

—5.60 x 16 6-ply. WHEELS—5.16 x 16. CAPACITY—10 cwt. Maker's declared Gross Vehicle Weight, 4,300 lbs. SHOCK ABSORBERS—1 double-acting, air-type.

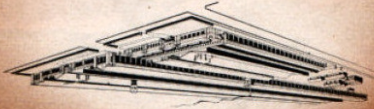
## LIGHTING

—Sealed beam headlights.

Ford Motor Company of Australia Pty. Ltd., whose policy is one of continuous improvement, reserves the right, subject to such regulations as may from time to time apply to change specifications and prices at any time without notice or incurring liability to purchasers.

FORD MOTOR COMPANY  
OF AUSTRALIA PTY. LTD.  
(INCORPORATED)  
REGISTERED OFFICE: GEELONG, VICTORIA

*From the home of Ford Manufacturing in Australia*

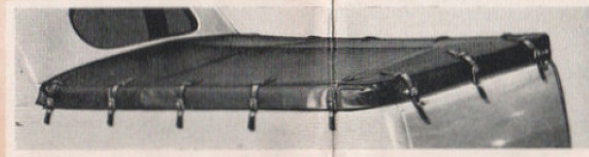


**BODY INTERIOR APPOINTMENTS**  
Controlled ventilating front quarter windows. Safety glass all round. Full width adjustable seat in both coupe and Panel Van. Instrument panel grained wood design with bright metal. Grained window reveals. Interior light. Locking glove compartment. Engine bonnet lock under instrument panel. Cigar lighter, ash tray. Combination steering and ignition lock. Illuminated at night for convenience of driver. Arm rest on driving side door. Dual sun visors.

- Ignition wiring neoprene covered—oil and heat resistant.
- Xec balanced carburetion, stabilizes air-fuel ratio under all conditions. Increased economy and performance.
- Xec positive rear main bearing oil seal to conserve oil.
- Late springs shot-blasted and rust-proofed for longer life.
- Hard alloy steel valve inserts for intake and exhaust valves.
- Pressure valve radiator cap prevents loss of water when operating in extreme heat.
- Xec long-life colling regulator automatically controls generator output.

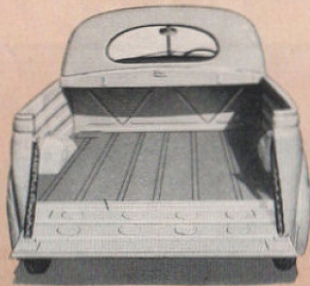
*A* SMART COMPANION FOR YOUR LEISURE.  
 AN ABLE PARTNER FOR YOUR BUSINESS

Built over a longer wheelbase, this new Ford V8 Coupe Utility is a dual purpose vehicle newly styled so that its inbuilt strength and working capacity do not lessen its gracefulness as a passenger car. In any company you will be proud to use it as a luxurious 3-passenger Coupe. Yet—under that sleek tonneau cover at the rear—it has space and reinforced strength for constant carrying of 10 cwt. loads.



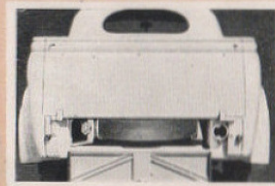
**Tonneau Cover is Standard Equipment**

This framed Tonneau Cover is curved to throw off rain and is snugly body-strapped for weather-proof fit. When not in use cover stows away behind seat of Coupe and frame folds for carrying in neat clip on bulkhead between utility space and Coupe.



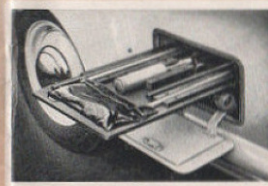
**Look at the Loadspace**

Ample for 10 cwt., Streamline bodies are built with steel inner and outer panels and rugged steel framework for long life. Steel skid strips facilitate handling of loads. Length along floor to tailgate is 84 inches. Tailgate opening provides 48-inch width for quick, floor-level loading. Sturdy suspension chains are fabricoid-covered.



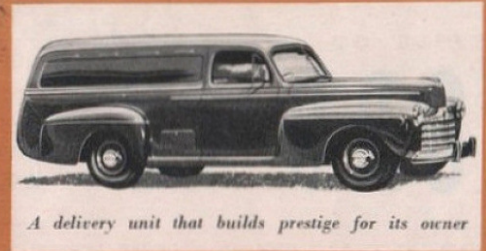
**Spare Tyre and Tool Compartments**

These separate locking recesses are waterproof and flush-with-body. In the spare wheel compartment beneath tailgate a new clamp holds tyre off floor to prevent rubbing and is adjustable for any tyre size or pressure—even "flats." In the compartment placed forward of the front of driving side rear fender, tools are mounted on sliding tray. Design is enhanced by recessing tail-light and numberplate.



# FORD V8

*Streamline*  
**COUPE UTILITY**  
 and  
**PANEL VAN**



*A delivery unit that builds prestige for its owner*

This Van Body, measuring 7 feet long at the floor, is adequate for bulky loads. It is well ventilated and inside walls are lined. Like the Coupe Utility, it has separate, flush-with-body recesses for spare wheel and tools. The full front seat is adjustable. Van side panels are recessed to accentuate display of your name.

