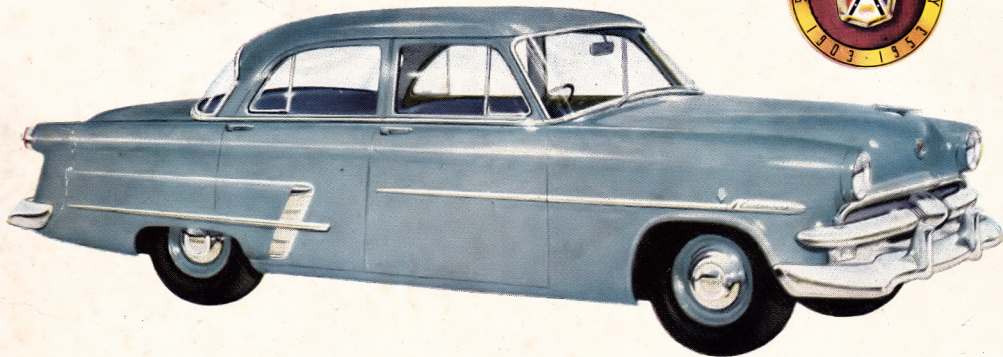


FORD V8 CUSTOMLINE



A 50th ANNIVERSARY MEMBER OF THE FORD FAMILY

CONDENSED SPECIFICATIONS • CUSTOMLINE SEDAN

V8 ENGINE: No. of cylinders—8; bore and stroke— $3\frac{3}{16}$ in. x $3\frac{1}{4}$ in.; piston displacement—cubic capacity—239.4 cu. in.; comp. ratio—6.55 to 1; taxable h.p.—32.5 R.A.C. rating; max. b.h.p.—108 at 3,500 r.p.m.

GEARBOX (Transmission): Type—3 speeds forward, 1 speed reverse.

Gearbox Ratios: First—2.779 to 1; second—1.614 to 1; third (top gear direct drive)—1 to 1; reverse—3.635 to 1. Type of gears—all helical. How engaged—gear change lever on steering column; first and reverse—sliding gear; second and third—constant mesh with blocker type synchroniser.

CHASSIS: Structure: Five cross member, box section chassis frame of double drop design with third cross member incorporated with K-bar; frame side rails of 4 in. x $3\frac{3}{4}$ in. and now with continuous weld box section for full length.

Front Suspension: Type—independently swinging links with coil springs; coil spring diameter outside—5.4 in.; shock absorbers—hydraulic double acting tubular type; castor and camber—independent adjustment for each at each wheel; stabilizer bar—one piece, linkless type.

Rear Suspension: Type—longitudinal semi-elliptic leaf springs; number of leaves—(4 door sedan): 7; type of drive—Hotchkiss.

Rear Axle: Type—semi-floating; final drive gears (crown wheel and pinion)—hypoid; rear axle ratio—3.90 to 1.

FOOT BRAKE (Service Brake): Type—Duo-Servo (self-energising) 4 wheel hydraulic.

HAND BRAKE: Type—mechanical application of rear brakes.

STEERING SYSTEM: Type—symmetrical linkage with cross link and idler arm; steering gear—worm and tripie tooth roller, steering gear ratio—26.3 to 1.

TYRES: 5 No. 6.70 x 15 x 4-ply tyres and tubes, on 5 in. rims.

GENERAL: Wheelbase—115 in., track (front)—58 in.; (rear)—56 in.; maximum overall height 4 door sedan with normal load—62.5 in.; maximum overall length over standard bumper guards—198 in.; maximum width—74 in.; crankcase capacity refill—pints—7 (plus 2 pints for dry filter); cooling system capacity—quarts— $17\frac{1}{2}$.

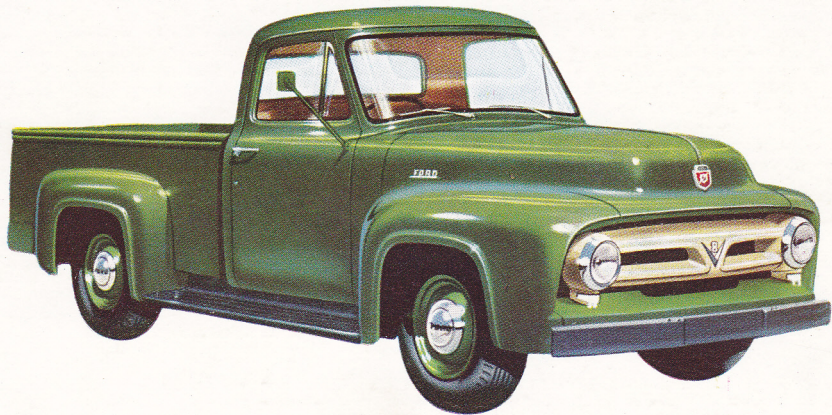
FUEL TANK CAPACITY: 12 gallons.

Ford Motor Company of Australia Pty. Ltd. whose policy is one of continuous improvement, reserves the right, subject to such regulations as may from time to time apply, to change specifications and prices at any time without notice or incurring liability to purchasers.

FORD MOTOR COMPANY OF AUSTRALIA PTY. LTD.



FORD TRUCK-TYPE UTILITY



CONDENSED SPECIFICATIONS • FORD TRUCK-TYPE UTILITY

ENGINE: No. of cylinders—8; bore and stroke— $3\frac{3}{8} \times 3\frac{3}{4}$ in.; displacement—239 cu. in.; compression ratio—6.8 to 1.
LUBRICATION: Engine—full pressure feed to all main, crankpin and camshaft bearings; crankcase capacity—8 pts. plus 2 pts. for dry filter. **FUEL SYSTEM:** Carburettor—down-draught, air cleaner—heavy duty oil bath, $1\frac{1}{2}$ pt. capacity; fuel tank—chassis with or without cab—17 gals.; Outside left frame rail. **ELECTRICAL SYSTEM:** Battery—heavy duty 6 volt; generator—34 amp.; ignition—full vacuum controlled system, fully automatic distributor, metal-clad, open wiring in rubber grommets. **TRANSMISSION:** Type—3 speed, heavy duty, helical synchronizers, second and high with steering column gear shift lever; gear position—ratio (to 1), first—3.71; second—1.87; high—1.000; reverse—4.59. **FRAME:** Type—parallel channel side rails with 4 cross members. **SPRINGS:** Semi-elliptic, alloy steel; length x width—in.; front— $42 \times 1\frac{3}{4}$; rear— 48×2 . **SHOCK ABSORBERS:** Front and rear—direct, double acting permanently sealed, telescopic. **COOLING SYSTEM:** Capacity— $18\frac{1}{2}$ qt.; radiator—flat tube and fin, pressure cap; thermostats—in engine water outlets; fan, diameter—18 in.; 6 blade. **DRIVE LINE:**

Type—Hotchkiss, straight line drive. **AXLE, REAR:** Type—hypoid, semi-floating, axle ratio—3.92 to 1. **BRAKES, SERVICE:** Type—hydraulic, two-shoe, single anchor, self-energising. **BRAKE, HAND:** Cable with equalizer applying rear wheel brakes. **STEERING:** Type—worm and single row needle bearing roller; ratio—18.2 to 1; wheel—18 in. dia., 3-spoke; turning radius, ft.—20 right and left; tie-rod—ball stud and socket, spring loaded for automatic take-up of wear, equipped with rubber dust shields. **WHEELS AND TYRES:** Wheels, 5—16 in. steel disc, 5.5 in. diameter bolt circle; rims, size and type— $16 \times 4\frac{1}{2}$ K, drop centre; Tyres, standard size—front, rear and spare— 6.50×16 6 ply truck type. **CHASSIS EQUIPMENT:** Included as standard, in addition to items specified above: Hood, cowl and dash assembly; front fenders; centre cowl ventilator; steel toe boards; instrument panel; speedometer; water temperature gauge; oil pressure gauge; fuel gauge; charge indicator; ash receptacle; glove box; choke button; light switch; bright hub caps; windshield wipers; electric horn; spare tyre carrier; air wing ventilating windows in doors; running boards; fenders, front and rear; mirror, rear view—outside on cab.

Ford Motor Company of Australia Pty. Ltd. whose policy is one of continuous improvement, reserves the right, subject to such regulations as may from time to time apply, to change specifications and prices at any time without notice or incurring liability to purchasers.

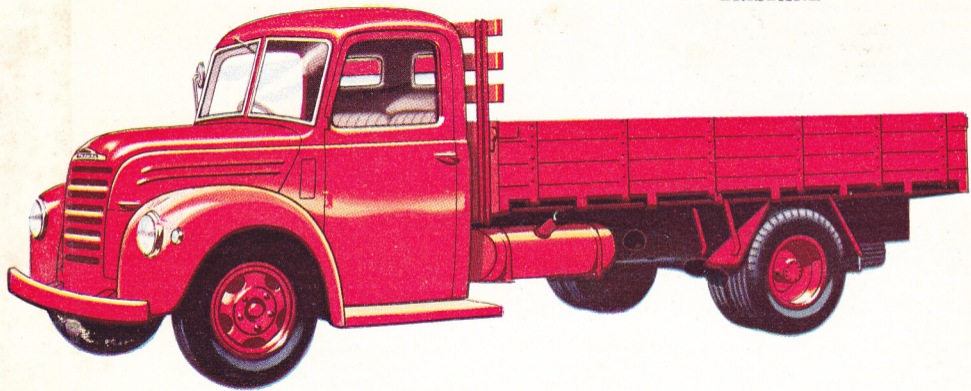
FORD MOTOR COMPANY OF AUSTRALIA PTY. LTD.
(Inc. in Vic.)
Registered Office: Geelong, Victoria



THAMES V8 TRUCK

GET YOUR FORD AT
METROPOLITAN MOTORS PTY. LTD.

302 ADELAIDE STREET
BRISBANE



A 50th ANNIVERSARY MEMBER OF THE FORD FAMILY

CONDENSED SPECIFICATIONS • THAMES V8 TRUCK

ENGINE: V-type 8 cylinder side valve; bore-3.06 in.; stroke-3.75 in.; capacity-221 cu. in.; R.A.C. rating 30 h.p.; compression ratio-6.15 to 1.

LUBRICATION: Gear type oil pump delivering under pressure to camshaft main and connecting rod bearings; piston pins and cylinder walls splash lubricated; detachable "by-pass", oil filter fitted; capacity of engine sump-6½ pints.

COOLING SYSTEM: Thermo-syphon assisted by two water impellers; capacity of cooling system approximately 4.81 gallons.

FUEL SYSTEM: Dual down-draft carburettor incorporating diaphragm type accelerator pump; oil bath air cleaner fitted; 14 gallon tank on chassis side member.

IGNITION: Coil and distributor type ignition; ignition advance controlled by vacuum brake; firing order-1, 5, 4, 8, 6, 3, 7, 2.

ELECTRICAL SYSTEM: Two brush generator with constant voltage control.

CLUTCH: Centrifugally assisted dry single plate clutch-11 in. diameter.

TRANSMISSION: Gearbox-four speed with all shafts operating on ball and roller bearings; gearbox capacity-4 pints.

REAR AXLE: Fully floating spiral bevel final drive with

straddle mounted pinion carried on roller bearings; rear axle ratio-6.67 to 1; oil capacity-4.5 pints.

OVERALL GEAR RATIOS (for all models except 30 cwt.): First-42.65 to 1; second-20.61 to 1; third-11.24 to 1; fourth-6.67 to 1; reverse-52.13 to 1. For 30 cwt. model: First-37.32 to 1; second-18.03 to 1; third-9.84 to 1; fourth-5.83 to 1; reverse-45.61 to 1.

STEERING: Worm and roller type; ratio-18.7 to 1.

BRAKES: Hydraulically operated fully self energising, vacuum assisted; drum diameter-16 in.

SUSPENSION: Longitudinal semi-elliptic springs forward and rear; double acting hydraulic shock absorbers standard on front axle.

TYRES: 4½ ton-6 tyres-7.50 x 20 x 10 ply (duals); 3 ton-6 tyres-7.00 x 20 x 8 ply (duals); 2 ton-6 tyres-6.50 x 20 x 6 ply (duals); 30 cwt.-4 tyres-7.00 x 20 x 10 ply.

ELECTRICAL EQUIPMENT: 6 volt battery; headlamps with twin filament bulbs, side lamps, stop and tail lights, instrument panel indirectly lit, constant voltage control.

GENERAL EQUIPMENT: Ammeter, speedometer, fuel, water temperature, oil pressure and vacuum gauges; electric windscreen wiper; front bumper; all steel cab; lock on right-hand door.

MAXIMUM G.V.W.'s: 4½ ton-16,500 lbs.; 3 ton-12,000 lbs.; 2 ton-9,800 lbs.; 30 cwt.-8,624 lbs.

Ford Motor Company of Australia Pty. Ltd. whose policy is one of continuous improvement, reserves the right, subject to such regulations as may from time to time apply, to change specifications and prices at any time without notice or incurring liability to purchasers.

FORD MOTOR COMPANY OF AUSTRALIA PTY. LTD.

