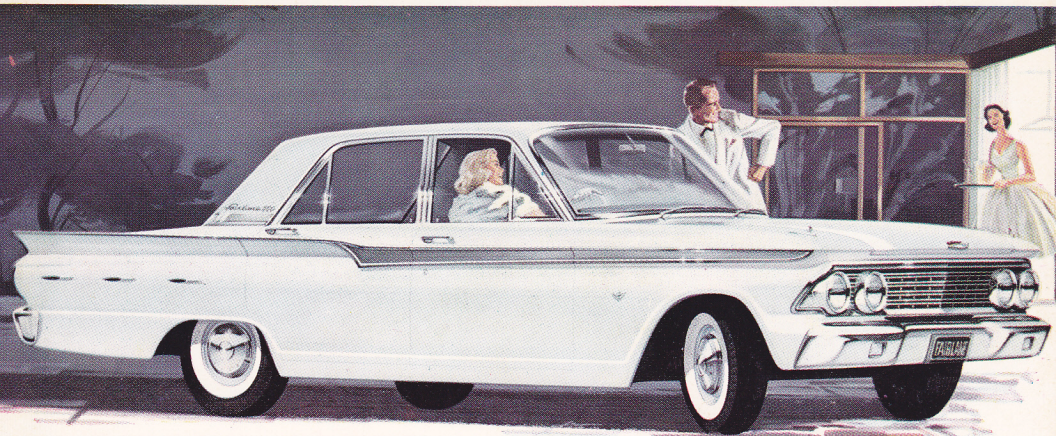


FORD'S NEW BLEND OF FORM AND FUNCTION



FORD

AIRPLANE 500

BRIEF SPECIFICATIONS — FORD FAIRLANE 500

ENGINE. 145 h.p. Challenger V8 — 221 cubic inch displacement. 3.50" bore. 2.87" stroke, 8.7:1 compression ratio premium fuel, two barrel carburettor, automatic choke, oil capacity with filter change 4.0 quarts. Fuel tank capacity 13-2/3 gallons.

CLUTCH AND MANUAL TRANSMISSION. Semi-centrifugal clutch. Face diameter 9½"; total frictional area 85.2 square inches, 3-speed manual transmission. Standard "H" shifting pattern with lever on steering column. Gear ratios (to 1) first 2.78, second 1.61, direct 1:1 and reverse 3.38.

FORDOMATIC DRIVE (OPTIONAL). Two forward speeds, one reverse. Gear ratios (to 1) low 1.82, direct 1.00, reverse 1.72.

REAR AXLE. Semi-floating type with offset hypoid gears. Straddle-mounted drive pinion. Axle ratio (to 1) 3.50.

FRONT SUSPENSION. Angle-poised ball-joint design with coil springs mounted on upper arms. Strut-stabilized lower arms. Internally mounted double-acting hydraulic

shock absorbers with rebound cutoff. Link-type, rubber-bushed ride stabilizer.

REAR SUSPENSION. Longitudinal, semi-elliptic leaf springs. Diagonally mounted double-acting shock absorbers.

STEERING. Recirculating ball-type. Steering-linkage system lubricated for 30,000 miles. Overall steering ratio 27.6 to 1. Turning diameter 39.5 ft.

BRAKES. Single anchor, self-adjusting, internal expanding, self energizing hydraulic brakes of double-sealed design. Total lining area 165 sq. in.

TYRES. 7.00 x 14 — 4 ply.

DIMENSIONS. Wheelbase 115.5". Tread — front 57", rear 56". Kerb weight (estimated) 2,844 lb. Overall length 197", Height 55.5". Overall width 71.3".

Ford Motor Company of Australia Pty. Ltd., whose policy is one of continuous improvement, reserves the right, subject to such regulations as may from time to time apply, to change specifications and prices at any time without notice or incurring liability to purchasers.

FORD MOTOR COMPANY OF AUSTRALIA PTY. LTD.

Shell Corner, 155 William Street, Melbourne, C.1.

METROPOLITAN MOTORS (SALES) PTY. LTD.