



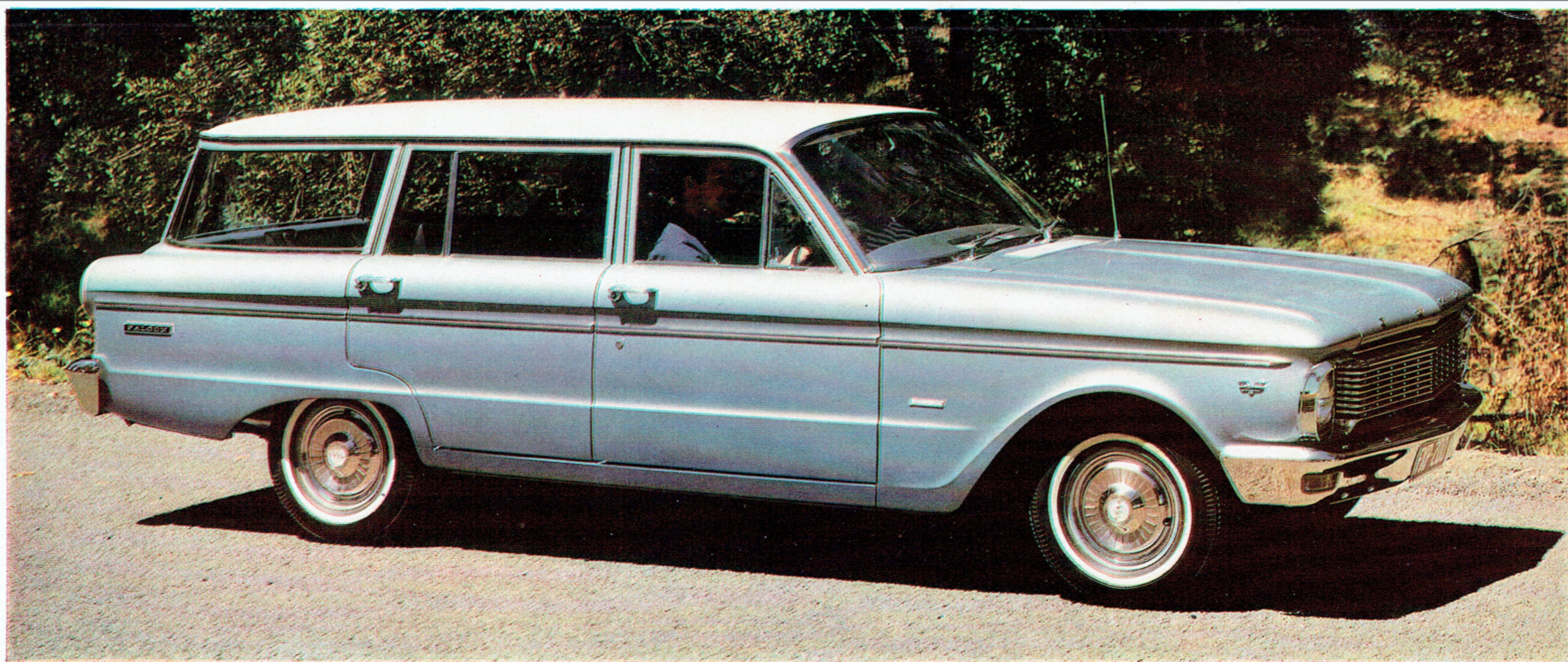
*Best year yet
to go FORD!*

With Compliments from



302 Adelaide St., Brisbane
Phone 2 0581

NEW FALCON STATION WAGONS



3 models, more style, more performance, more durability . . . a great new world of wagon worth!

The new Falcon Station Wagon brings you new value — in beauty, in performance, in solidness, in driving pleasure, in savings.

Its great new styling is bold, sleek, and beautifully proportioned.

Its performance is even livelier, because each of Falcon's three engines features a modified camshaft which makes low-speed driving more responsive.

Its body construction is more rugged. Beneath the new styling are "Torque-boxes" — massive chassis-type frames — welded into the body structure and running the entire length of the body under the passenger compartment.

Its comfort, convenience and spaciousness come in even greater measure in the handsome new interiors. Upholsteries and patterns are new and smarter. The front seat is

2-inches wider for more driver and passenger comfort.

The sleeping or load length is six feet five inches with the tailgate closed (and the driver's seat in a *driveable* position) . . . eight feet three inches long with the tailgate open. The passenger compartment is completely surrounded by insulating and sound-deadening materials. Falcon's famous "£1,000,000 Ride" has been even further improved — with revised valving to front and rear shock absorbers, and new spring rates. This provides an even smoother ride and better handling — particularly on rough "bad road" surfaces.

Routine servicing, oil changes and lubrications are required only twice a year or each 6000 miles. And with both manual transmission and new "Fordomatic 3S" automatic transmission, you get more miles per gallon.

Furthermore, the new Falcon is designed, engineered and manufactured *completely* in Australia — it's tested, toughened, and tested again to the ultimate limits of effort, and offers substantially more wagon for your money than anything else near its price.

Standard Equipment Features (Deluxe Wagon):

- Self-adjusting brakes that never need adjusting for the life of the brake linings
- Undercoating of all vital underbody parts
- 6000-mile routine servicing and lubrications
- Safety-type wheel rims
- White, safety-type steering wheel
- 2-speed electric windshield wipers
- Zone-toughened windshield
- Dome light in centre of roof
- Courtesy lights on front doors
- Protective rubber mat in the rear of cargo area
- Big 6.50-inch tyres
- Choice of 14 exterior colours, including 7 lustrous metallics, in gleaming "Diamond Lustre" baked enamel
- 96-horsepower engine.







Falcon has the quickest, easiest-converting second seat in any station wagon. Release a single catch conveniently placed on the driver's side... seven seconds to swing over the seat-back... and you have a full-length floor, perfectly level, ready to take about any load up to 6' 5" long.



Falcon's counterbalanced tailgate works so easily it's a child's play. Concealed springs provide the muscle. Release the single centre lock, lower the tailgate, and it comes to rest—perfectly level with the floor at a convenient, easy loading height. Flip the tailgate up and it locks securely.



Falcon's roll-down rear window does away with tricky catches, and is wonderfully convenient. For loading or unloading parcels you don't need to lower the tailgate. Just 2 or 3 turns of the centre handle give you access to the load area through the rear window opening.



Convenience, safety and security rolled up in one! Falcon's optional *power-operated* rear window lets you raise or lower the rear window from the driver's seat (even while on the move) by simply flipping a switch on the dashboard... or by turning a key in the tailgate.

Never before have you had so much luxury and comfort . . .

Just see how perfectly the new Falcon combines luxury with hard-working durability!

Inside, all tailoring, and new "Glove Grain" vinyls, are equal to those offered in far more expensive cars. The front seat is now 2" wider — provides spacious comfort for "3 abreast" — and travels 1" further back for greater legroom. When the front seat is moved forward for a shorter person, it automatically moves higher to give a better view.

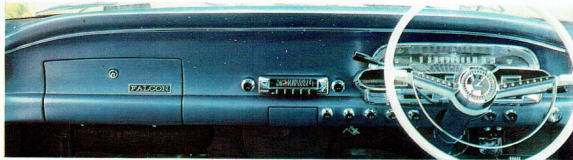
Thick layers of foam and wool cushioning provide deep-down comfort. New springing in the seat construction prevents seat "sag", and has a longer life.

An almost endless range of colours and patterns is available to suit your taste and match your exterior colour choice. You may also choose Falcon's luxurious "Fashion-Pak", consisting of "Majestic Cord" woven fabric seat inserts, thick wall-to-wall carpets and rear-door armrests, for slight extra cost; or choose the "Majestic Cord" seat inserts, or carpets, individually.



Insulating and sound-proofing materials completely surround the passenger compartment to absorb noise *before* it enters the interior. The engine hood, interior floor, and roof are lined. Undercoating, too, deadens road noise as well as protects Falcon's underbody against rust and corrosion.





A new, smart instrument panel sweeps handsomely across the front. The steering wheel is of the deep-centre, safety-type design, and is positioned to allow more laproom, and to let you slip easily into, and out of, the seat. All instruments are fully illuminated and

individually marked for easy reading at night... there are separate "right" and "left" turn-signal lights... the speedometer now reads to 120 mph... and the glove-box is lockable. (Fully padded instrument panel, shown above, is optional extra cost.)



Falcon's big brakes are self-adjusting. Every time you apply them while moving in reverse they automatically adjust themselves to peak efficiency.



All Falcon's seats provide the deep-down comfort of foam and wool cushioning. New springing provides firm support, prevents seat "sag", and lasts longer. New "Glove Grain" vinyls, too, are more durable, wipe clean with a damp cloth.

You're ahead from the word GO with Falcon's proven engines...

Falcon's power comes from the most thoroughly proven 6-cylinder engines in Australia. You have a choice of 3... the 96-horsepower engine with its great petrol economy... the lively "Pursuit 170" engine which also gives excellent petrol economy... and the hottest of them all — the rocketing "Super Pursuit 200".

Each engine is electronically balanced for smooth and quiet operation... and, in the factory, is quality-tested by rigorous test-running *before* it goes into your new Falcon.

Falcon's 96-horsepower engine is the most economical "six" there is... provides adequate power for normal driving. Specifications: 144 cu. in. displacement, 96 brakehorsepower, 138 lbs./ft. torque, 8.7 : 1 compression ratio.

Falcon's "Pursuit 170" engine provides extra-lively performance with both manual and automatic transmission—*plus*, exceptional petrol economy. Specifications: 170 cu. in. displacement, 111 brakehorsepower, 156 lbs./ft. torque, 8.7 : 1 compression ratio.

Falcon's "Super Pursuit 200" engine provides you with rocketing power. Its split-second response in any speed range, ability to loaf at extremely high cruising speeds, and fantastic hauling power, make it truly exhilarating to command. Specifications: 200 cu. in. displacement, 121 brakehorsepower, 185 lbs./ft. torque, 8.7 : 1 compression ratio.



New "Fordomatic 3S" Automatic Transmission

Fordomatic's driving-ease, flexibility and economy has been taken even further. New "Fordomatic 3S" 3-speed automatic transmission adds an *even greater* responsiveness to its smooth performance — and returns more miles to the gallon. It is optional equipment, and specially designed to team perfectly

with Falcon's "Pursuit 170" and "Super Pursuit 200" engines... gives you a triggered "kick-down" gear for split-second response and passing... may be "locked" into second gear for heavy hauling... and never needs servicing. The selector dial is illuminated for easy reading at night.



Falcon Squire — The Aristocrat of the Station Wagon World . . .

Step up to the Aristocrat of the entire station wagon world — the new Falcon Squire. It brings you Australia's most distinctive station wagon styling, the utmost in wagon luxury inside, and sparkling performance.

The roomy interiors feature a host of new refinements and attractive fabrics. Seats are wider, give deep foam-cushioned comfort. New, deep twisted-pile carpeting stretches from the front, right through to the tailgate. The instrument panel and sun visors are foam-padded. And, as standard equipment, Squire offers you an electric tailgate window — you can raise or lower the window by pressing a switch from the driver's seat, or by turning a key in the tailgate.



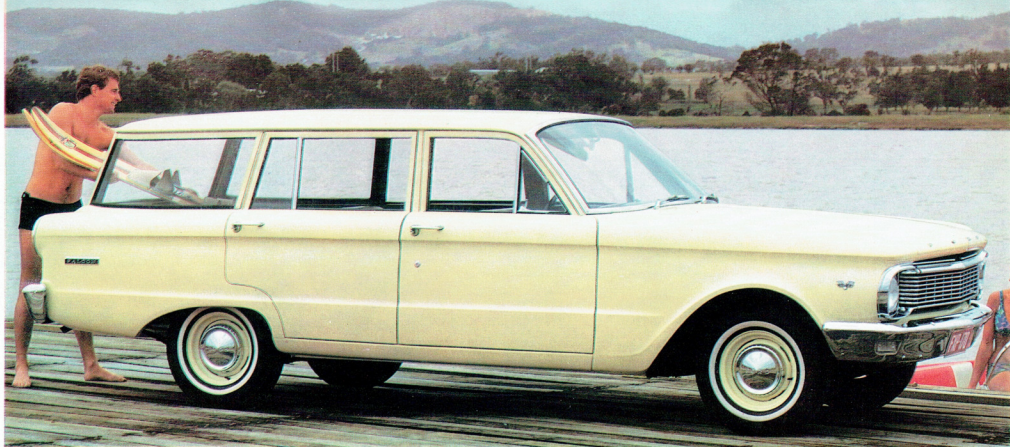
As with all Falcons, there's undercoating of all vital underbody parts to protect against rust and corrosion, and strategic sound-proofing to give you a beautifully hushed ride.

Inside dimensions are long and wide for real wagon convenience. Select from 2 engines — the "Pursuit 170" (standard equipment), and the "Super Pursuit 200" . . . and from 2 transmissions — manual, and new "Fordomatic 3S" 3-speed automatic transmission.

Standard Equipment Highlights:

"Pursuit 170" engine Manual transmission Power-operated tailgate window Carpets Fully-padded instrument panel and sun visors Door-operated courtesy lights Dome light in centre of roof Big 6.50" x 13" white wall tyres High-fashion trim rings Self-adjusting brakes White, safety-type steering wheel Safety-type wheel rims 2-speed electric windshield wipers Fully-insulated and sound-proofed interior Choice of 3 exterior colours in "Diamond Lustre" baked enamel Wood-like exterior panelling.





Falcon Station Wagon—Lowest price, biggest value in its class . . .

The Falcon Standard Station Wagon offers all of Falcon's new style, ride and engineering features . . . at the lowest price in its class.

You'll find lots of wonderful things to increase your motoring enjoyment, and please your sense of value.

As in every Falcon, strategic insulation and sound-proofing helps make the ride quiet and free from vibration. You'll like the more responsive performance from the standard 96-horsepower engine . . . the 6000-mile, or twice-a-year routine servicing and lubrication periods . . . the deep, foam-cushioned seats . . . long-lasting, easy-to-take-care-of "Ripple Weave" vinyls . . . and the roll-down rear window.

Depending on whether you like to drive yourself, or let your Falcon do almost all of it for you, you can couple either manual or Fordomatic 2-speed automatic transmission to the engine of your choice.

Big 6.50-inch tyres . . . wrap-around deep-section front bumper . . . "Torque-box" chassis frame . . . your choice of 7 "Diamond Lustre" single-tone colours, plus 3 interior colour combinations . . . these, and many other items, add to your motoring investment. But, for the complete Falcon story, take a test-drive at your Ford Dealer's. It's the only real way for you to know first-hand how much more you stand to gain.

Standard Equipment Features:

Self-adjusting brakes that never need adjusting for the life of the brake linings "Diamond Lustre" baked enamel for longer life, and less care in keeping its showroom shine Undercoating of all vital underbody parts, to protect against rust and corrosion Insulation and sound-proofing under the engine hood, and lining the interior, for exceptional quietness Dome light in centre of roof Safety-type wheel rims Safety-type steering wheel Safety glass Zone-toughened windshield 2-speed electric windshield wipers Improved performance 96-horsepower engine New, longer-lasting seat construction Roll-down rear window Protective rubber mat in cargo area Choice of 7 exterior colours Choice of single-tone and two-tone interior trims.

Service-saving Features:

Falcon requires routine maintenance and servicing by your Ford Dealer only twice a year or once every 6000 miles, whichever occurs first. It is, in fact, as care-free as a car can be:

1. It lubricates itself — will normally go 36,000 miles between chassis lubrications.
2. It adjusts its own brakes, automatically, by simply applying the brakes as the car is moving in reverse.
3. It cleans its own oil — allows you to travel 6000 miles between oil changes.
4. It protects its own body — all vital underbody parts are specially undercoated to resist rust and corrosion.
5. It takes care of its own finish — "Diamond Lustre" baked enamel finish retains its showroom shine.

Specifications:

FALCON DESIGN: All new welded, integral body and frame for quietness and high strength-weight ratio. Roof cross brace at centre gives extra rigidity. Completely sealed and insulated. Rear-hinged counter-balanced hood with outside safety-latch. Chromed one-piece front and rear bumpers. Corrosion-resistant heavily chromed steel grille. Bright-metal windshield and rear window mouldings. Cowl-type ventilation system. Clear-view safety glass throughout. Wide Angle windshield with forward-flaring pillars. Large, wide-opening doors, with assist-type door checks and bronze-bushed hinges. Double-grip safety door locks. Posture Control front seat, adjustable to 11 positions, total of 5 1/2 inches. Rear-mounted 11.7 gallon fuel tank.

ENGINE: Standard 96 hp. Overhead Valve Falcon Six — 144 cu. in. displacement; 3.50" bore x 2.50" stroke; 8.7:1 compression ratio; brake horsepower 96 at 4,200 r.p.m.; maximum torque 138 lbs. ft. at 2,000 r.p.m. **Optional "Pursuit 170" Six** (standard fitment on Squire) — 170 cu. in. displacement; 3.50" bore x 2.94" stroke; 8.7:1 compression ratio; brake horsepower 111 at 4,400 r.p.m.; maximum torque 150 lbs. ft. at 2,400 r.p.m. Low-silhouette unit-design carburettor, manual choke; full-vacuum spark control; integral cylinder head and 6-port intake manifold; precision-moulded crankshaft with four precision main bearings; rotor-type oil pump; oil capacity 3 quarts, with filter change, 4 quarts.

Optional "Super Pursuit" Engine — 200 cu. in. displacement; 3.68" bore x 3.126" stroke; 8.7:1 compression ratio; brake horsepower 121 at 4,400 r.p.m.; maximum torque 185 lbs. ft. at 2,400 r.p.m. Hydraulic valve lifters; automatic choke.

Special low-compression "144" engine — available special orders only — compression ratio 7.5:1; brake horsepower 80 at 4,200 r.p.m.; max. torque 127 lbs. ft. at 2,000 r.p.m.

FEATURES: For economy and long life, the Falcon Six has Short Stroke, low-friction design; Wedge-type combustion chambers; Free-Turning overhead intake and exhaust valves; 3-ring aluminium-alloy pistons with full-chromed top ring; Super-Filler air cleaner with re-usable dry-type element; fuel pump with integral 36,000 miles filter; full-pressure lubrication system with Full-Flow disposable-type oil filter; pressurized cooling system with Positive-Action thermostat; 12-volt electrical system; weather-proof ignition; 18-mm. Turbo-Action spark plugs; 54-plate, 40 amp.-hr. battery; positive engagement starter; 3-point rubber-insulated engine mounting; corrosion-protected muffler. Engine is electronically mass-balanced while operating under its own power for optimum smoothness, before installation in vehicle.

CLUTCH AND MANUAL TRANSMISSION: Single cushion disc, dry-plate clutch for smooth engagement; aluminium housing; adjustable fingers; permanently lubricated ball-bearing type throw-out bearing; reinforced suspended clutch pedal for easy action and no draught hole in firewall. Face diameter 8 1/2". In. Total frictional area 68.1 sq. ins. Conventional Drive has 3 forward speeds and 1 reverse. Short-pitched fine-pitch helical gears for high strength and quietness with forged bronze synchronizers for smooth operation. Anti-friction bearings throughout. Standard "H" shift pattern with lever on steering column. Ratios (to 1): 1st 3.29, 2nd 1.83, direct 1.00, reverse 4.46.

FORMOMATIC DRIVE (optional): Features simplified design, lightweight cast aluminium housing construction. Torque converter in combination with compound planetary gear set. **Formomatic 2-speed** — Two forward gear ratios, one reverse (to 1): low 1.75, direct 1.00, reverse 1.50. "D" (Drive) range gives brake, smooth starts in low. Effective engine braking in "L" (Low) position. Selector lever and quadrant on steering column, sequence L, D, N, R, P. **Formomatic 3S 3-speed** — Three forward gear ratios, one reverse (to 1): low 2.39, intermediate 1.45, direct 1.00, reverse 2.09. "D" (Drive) gives fast, smooth starts in low. Effective engine braking in "L" (Low) position. Transmission may be "locked" in intermediate gear for extreme driving conditions and heavy towing. Selector lever and illuminated quadrant on steering column, sequence L, D, N, R, P.

REAR AXLE: Semi-floating type with offset hypoid gears. Overhung drive pinion. Induction-hardened forged shafts with permanently lubricated, double-sealed ball-type bearings. Needle roller bearing universal joints. Axle ratios: 3.50:1 standard on "144" and "Pursuit 170" engines; 3.20:1 optional on "Pursuit 170" only, standard on "Super Pursuit 200".

FRONT SUSPENSION: Angle-Poised Ball-joint type with new rate coil springs pivot-mounted and rubber-insulated lower arms. Built-in anti-dive control. Internally mounted hydraulic double-acting shock absorbers with rebound cutoff. Front end has link-type, rubber-bushed ride stabilizer to control roll on turns. Tapered roller wheel bearings.

REAR SUSPENSION: Longitudinal, semi-elliptic leaf springs of a symmetrical design for rear axle located forward from centre of springs for anti-squat control on take-off. Provides soft-action, variable-rate with rubber bushed supports and compression-type shackles for soft, levelized ride. Axle nose bumper. Diagonally mounted hydraulic double-acting shock absorbers with improved valving.

STEERING: Magic-Circle low-friction recirculating-ball-type steering provides easy handling. Anti-friction bearings throughout. Symmetrical linkage. Overall steering ratio 27:1. Safety type 16", 2-spoke deep centre steering wheel, white with horn ring — Falcon Deluxe, Futura and Squire. Black with centre horn button — Falcon. Turning diameter 38 ft.

BRAKES: Self-adjusting, double-sealed, self-energising hydraulic brakes have suspended pedal and dash-mounted master-cylinder. Composite drums, 9-in. diameter. Riveted linings, for long life, cool operation and fade resistance. Lining area is 133 sq. in. Offset "T" handle parking brake at right of steering column applies rear brakes.

TYRES: Black, tubeless, on safety rims, 6.50 x 13, 4 ply. Pressed steel ventilated disc wheels. Spare wheel and tyre in well under floor.

STANDARD EQUIPMENT (Sedans and Wagons): Two sun visors. Arm rests on front doors. Rear compartment coat hooks. Two parallel-action, electrically operated windshield wipers of the 2-speed type. Inside rear-view

TWICE-A-YEAR MAINTENANCE: Falcons are designed to go 6,000 miles (or 6 months) between oil changes and minor chassis lubrications; 36,000 miles between major chassis lubrications. Other Falcon service-savings include: 36,000 mile fuel filter, self-adjusting brakes, rust and corrosion-resistant fully galvanneal muffler; undercoating on all vital underbody parts, lubed-for-life steering linkage. Falcon needs so little service it's good sense to see that it gets the best — at your Ford Dealer's.

FORD 12/12 WARRANTY: For 12,000 miles or 12 months, whichever comes first, every Falcon is warranted against defects in materials or workmanship. This warranty covers both parts and labour. As a Falcon owner you remain responsible only for normal maintenance, and replacement of maintenance items.

mirror. Instrument panel with 120 m.p.h. speedometer, odometer, fuel gauge, temperature gauge, oil and generator warning lights, high-beam and separate "Right" and "Left" turn signal indicators in cluster, lighted control identification, ash tray (second ash tray in back of front seat), glove box, dome light operated by headlight switch, also courtesy operated on Falcon Deluxe. Cigarette lighter (Falcon Deluxe). Sealed-beam, pre-focused headlights, wrap-around parking lights, tail-lights with stoplights and amber turn indicator lights, number plate illumination light, color-keyed rubber floor covering. Rubber floor mat for load compartment.

STANDARD EQUIPMENT (Squire): As for Falcon Station Wagon, with these additions: "Pursuit 170" engine, power-operated rear window, fully carpeted floor (including load area), padded instrument panel, padded sun visors, rear door armrests, wheel trim discs, simulated wooden exterior panelling, dual horn, 6.50 x 13, 4 ply, white wall tyres.

WEIGHT: Kerb weight, approximate — 2,827 lbs. Add the following for extra equipment: Radio 7 lbs., heater 17 lbs., Formomatic 3S Drive 15 lbs., approx.

FALCON'S 4-WAY BETTER SERVICE: Your satisfaction as a Falcon owner is increased by the after-sale service of Ford Falcon Dealers. It has four big advantages to you . . . Falcon Dealers send their mechanics to specialised Ford Falcon factory service schools . . . have time-saving equipment just right for Falcons . . . follow Ford Falcon factory-approved servicing methods . . . use genuine Falcon parts. Wherever you go, it keeps your car in top condition at minimum cost.

The specifications contained herein were in effect at the time this catalogue was approved for printing. Ford Sales Company of Australia Limited, whose policy is one of continuous improvement, reserves the right, subject to such regulations as may from time to time apply to change specifications and prices at any time without notice or incurring liability to purchasers. Some of the items illustrated or referred to are optional at extra cost.

Best year yet to go FORD!



FORD OF AUSTRALIA