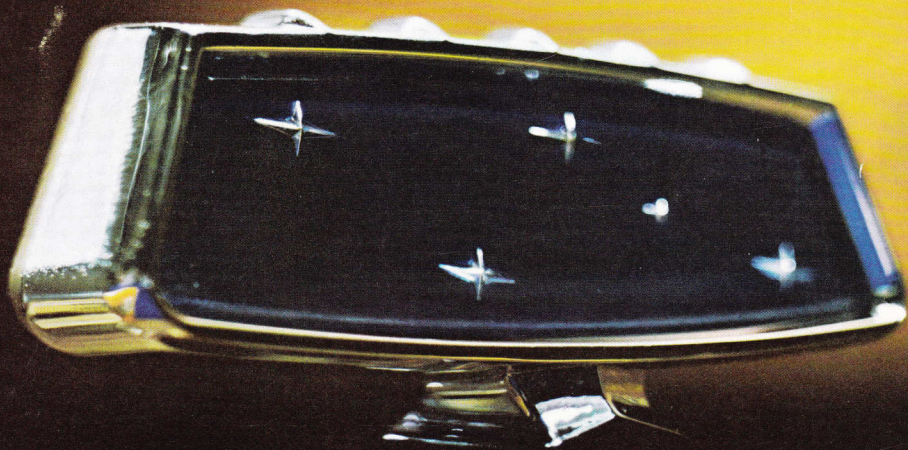


With Compliments from

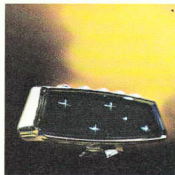
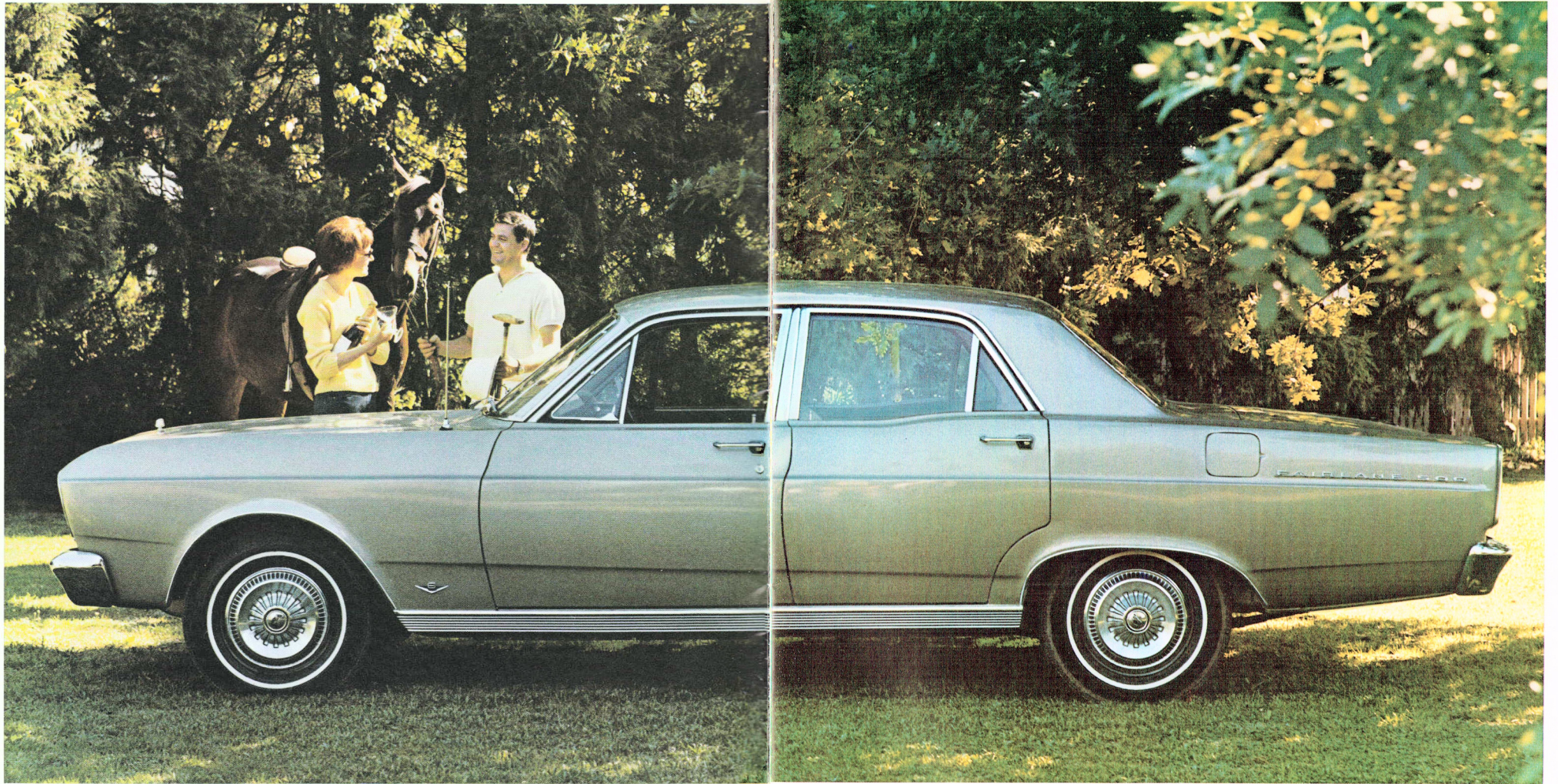


302 Adelaide St., Brisbane
Phone 2 0581



Symbol of Distinction...Fairlane by Ford

Fairlane 500



Here is the new Fairlane 500 — a car built specifically for those who seek the finer things in life but also insist on value.

It is a car that is designed, engineered and built in Australia for Australian conditions.

It is impressive in appearance. In size, it is ideally suited for today's driving. It gives spacious

comfort for six people.

Behind the wheel you'll find it one of the highest performing cars in Australia, with outstanding riding and handling qualities.

Almost every luxury and convenience item you can think of is included as standard equipment.

We believe this is the kind of car *you* have been seeking. In the following pages, we describe the reasons why.

It stands apart among luxury cars

Fairlane 500



Fairlane 500's individually adjustable front seats give you deep, foam-cushioned comfort. They are scientifically contoured to hold you in position over rough roads and when cornering. Each seat reclines to your exact personal travelling position. For additional comfort the seat cushion and seat-back upholsteries are perforated to permit them to breathe.

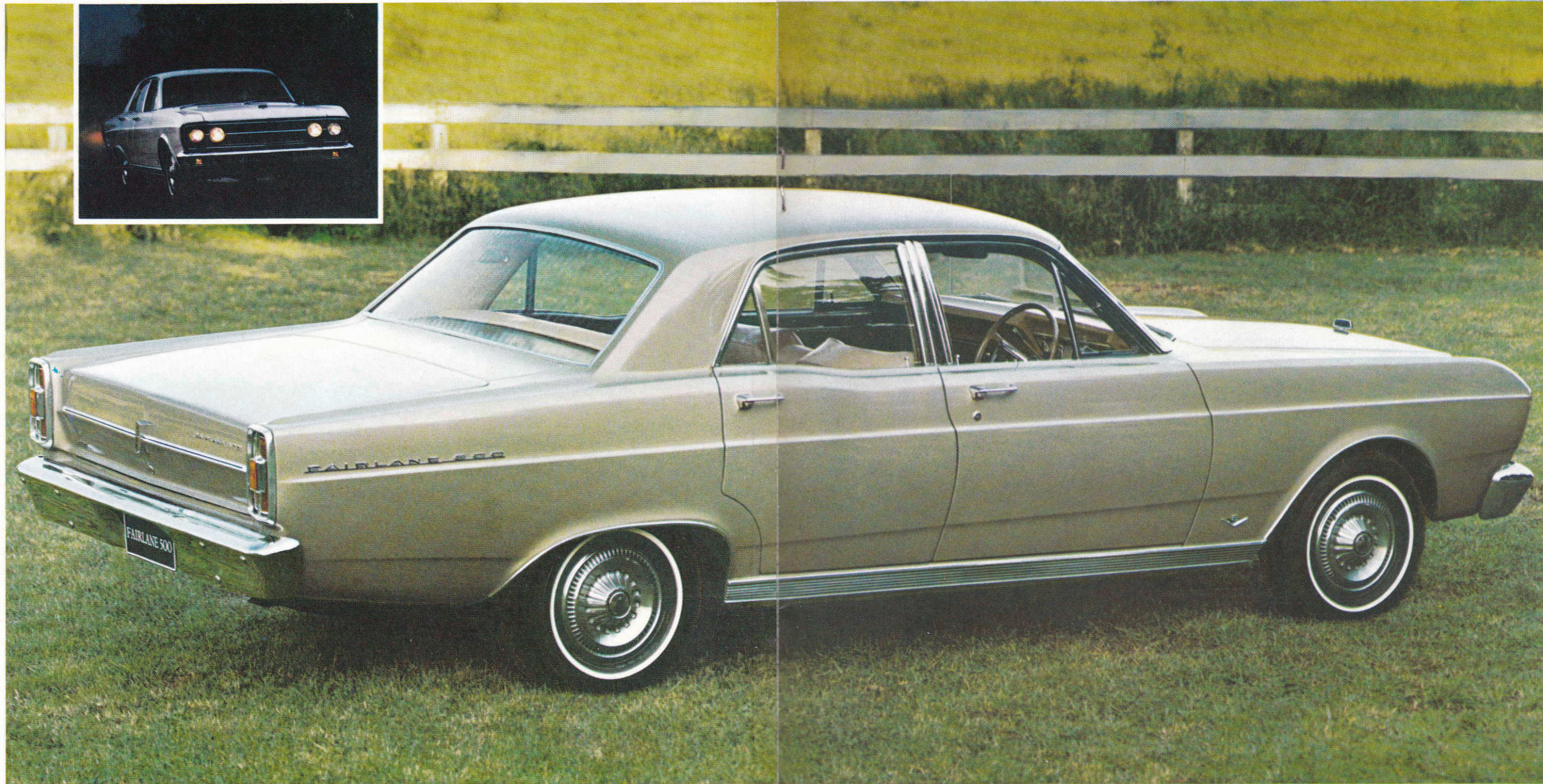
A padded section between the front seats allows a third person to be accommodated, if desired. There is a fold-away centre armrest, both

front and rear. Insulation against sound is used lavishly throughout the interior to ensure the utmost in travelling quietness. Underfoot is deep-pile, wall-to-wall carpeting. Other standard luxuries: special reading lamps and indirect floor lighting; a two-speed "Silentflo" heater and demister; a completely cushioned instrument panel which features a tastefully designed, full-width, walnut-finish applique.

Items for your safety include foot-operated windscreen washers, double-grip door-locks, deep-centre steering wheel and padded sun-visors.

Everything for your comfort, convenience, safety

Fairlane 500



The Fairlane 500 is one of the finest performing cars in Australia.

The standard 200 horsepower "Mustang 289" V8 gives you instant acceleration and effortless high-speed cruising. Your transmission is world-famous "Cruise-O-Matic" Drive.

You are therefore provided with undisputed power linked to the smoothest of all automatic transmissions.

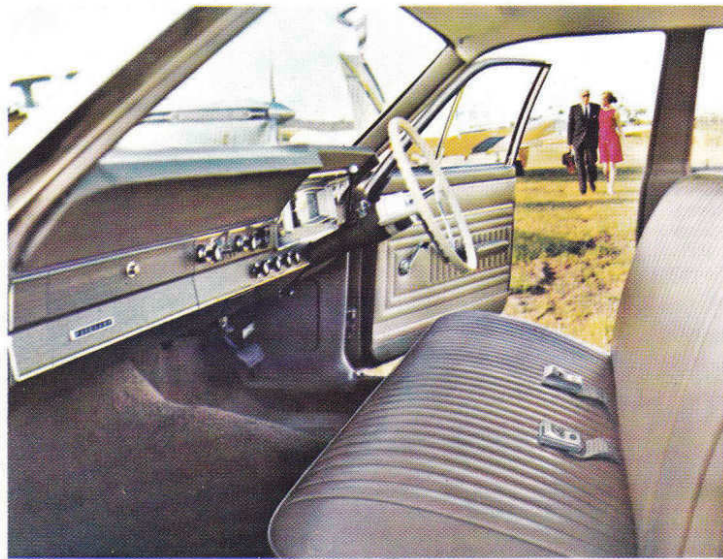
In addition to power disc brakes, your Fairlane 500 is equipped with power steering.

No matter what type of road you travel you will find Fairlane immensely satisfying and easy to drive. The reason is Fairlane's long wheelbase (116 inches), and wide track (58 inches), which gives exceptional stability under all conditions. Big wide-tread low-profile tyres provide a quieter, road-gripping ride.

Ford's unique "Torque-Box" chassis construction also plays a major role in the secret of Fairlane 500's unsurpassed road-holding abilities and quietness of ride.

Performance is smooth, swift and quiet

Fairlane



Outstanding value

The appeal of classic lines and functional beauty in the Fairlane Sedan is enhanced by its unmistakable value for money when compared with other cars in this price range.

Inside are luxuriously upholstered full-width seats, colour-matched to the elegant single-tone interior trim, fully-padded dash, padded sunvisors and deep-pile door-to-door carpeting.

As standard equipment, the Fairlane comes fitted with a heater/demister, windshield washers, dual-horns, alternator and reversing lights.

Your power plant is the spirited "Super Pursuit 200" engine . . . with a fully-synchromesh manual transmission as standard equipment.

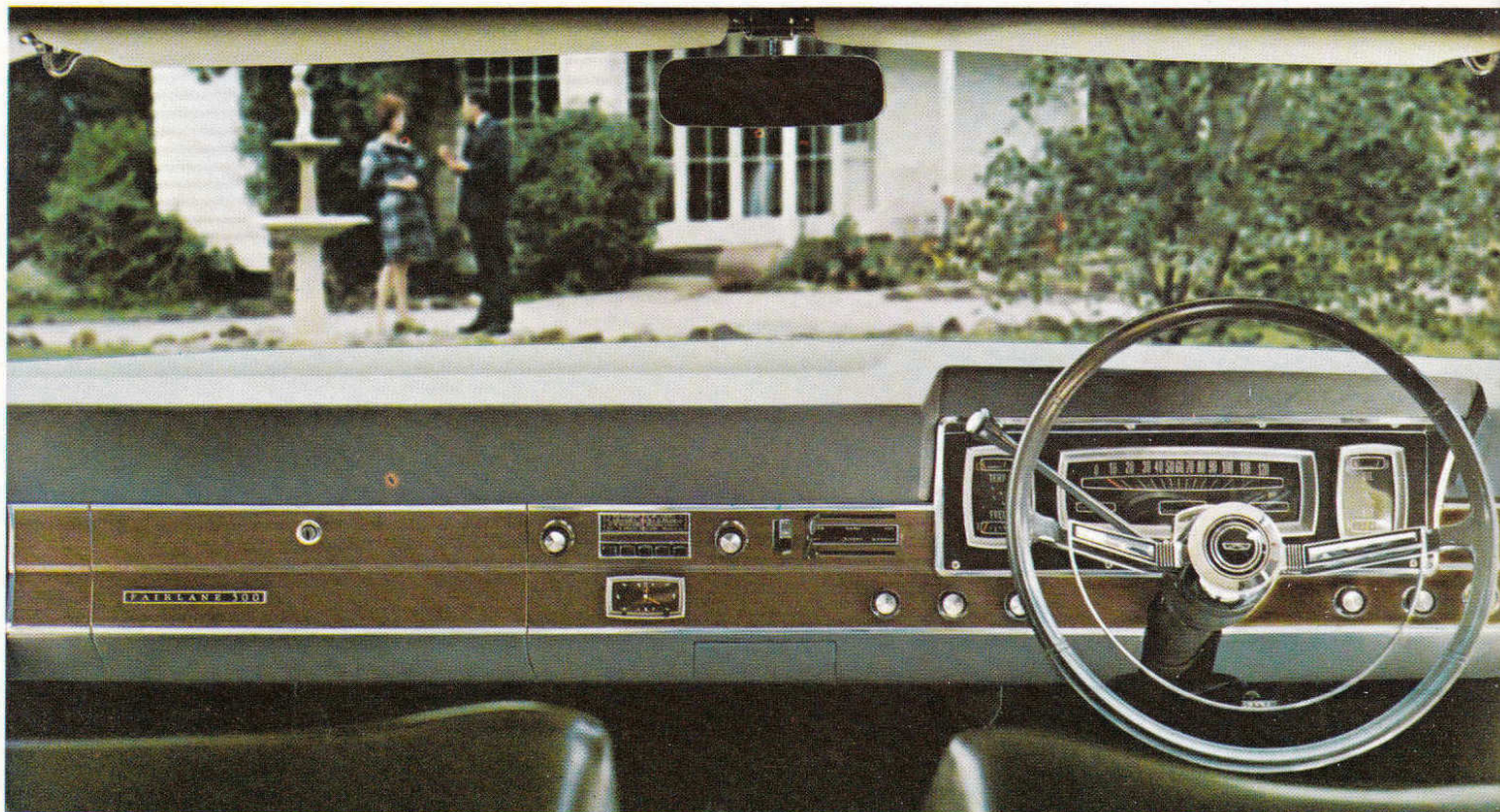
The "Mustang 289" V8 engine, "Cruise-O-Matic" Drive and power disc brakes are optional. The full range of optional equipment is listed on the back page of this brochure.

Behind the wheel of the Fairlane you enjoy the full measure of big-car comfort, interior spaciousness, riding smoothness and handling ease.

The Fairlane shares the same styling as the Fairlane 500, but has its own individual ornamentation.



Fairlane 500 & Fairlane



Standard appointments include:

FAIRLANE 500: Individual reclining front seats □ Centre armrests—front and rear □ "Mustang 289" 200-horsepower V8 engine □ "Cruise-O-Matic" automatic transmission □ Power steering □ Power disc brakes □ Locking and illuminated glove compartment □ "Silentflo" heater/demister □ "Select-Air" fresh-air ventilation system □ Reading lamps □ Floor level lighting □ Fully-fitted deep-pile carpets □ Padded instrument panel □ Padded sun-visors with passenger side vanity mirror □ Windshield washers □ Shatterproof interior mirror □ Reversing lights □ Electric clock □ 14" wheels, safety rims, extra-low-

profile tyres □ Illuminated 30 cubic feet boot □ Reversible keys.

FAIRLANE: "Super Pursuit 200" engine □ Fully synchromesh 3-speed manual transmission □ Full-width seats □ Fully-fitted deep-pile carpets □ Illuminated 30 cubic feet boot □ "Silentflo" heater/demister □ "Select-Air" fresh-air ventilation system □ Padded instrument panel and sun-visors □ Double-grip door-locks □ Deep-centre steering wheel □ Windshield washers □ Shatterproof interior mirror □ Reversing lights □ 14" wheels, safety rims, extra-low-profile tyres □ Reversible keys.



QUALITY-BUILT. The new Ford Fairlane 500 and Fairlane models have been built to conform to high standards of workmanship and finish. Both models have been designed, engineered and built in Australia, for Australian conditions. They have passed and re-passed every test known in the automotive world at Ford's Proving Grounds, in the You Yang Mountains, Victoria.

PAINT/RUSTPROOFING. The finish you see on the Fairlane is finer, deeper, more durable. It is eight coats deep... three of them tough "Super Diamond Lustre" acrylic baked enamel to stay newer, longer. Beneath Fairlane's beauty, too, is Ford's unique triple-rust-protection comprising Zinc Primer and Underbody Dip that lock out rust from the body metal, and a special "spray-on" Undercoating on all vital underbody parts providing complete protection underneath.

OPTIONAL EQUIPMENT. Fairlane 500: Vinyl roof Radial ply and white-wall tyres Laminated/graduated tint windscreen Push-button radio.

Fairlane: "Mustang 289" V8 engine "Cruise-O-Matic" automatic transmission Power disc brakes Power steering Radial ply and white-wall tyres Full wheel covers Vinyl roof Laminated/graduated tint windscreen Push-button radio Electric clock.

FORD 12/12 WARRANTY. Fairlane 500 and Fairlane give you warranty protection for 12,000 miles or 12 months whichever comes first, excluding tyres and tubes which are warranted by their manufacturer. Every Fairlane is warranted against defects in materials and workmanship for this period. Owners are responsible only for normal maintenance and routine replacement of maintenance items.

DEALER SERVICE AND PARTS SUPPLY. Your Fairlane is backed by over 400 Ford Dealers' low-cost specialised service, and the ready supply of genuine low-cost FoMoCo parts.



DIMENSIONS: Overall length: 196.1". Overall width: 74.7". Overall height: 55". Wheelbase: 116". Track, front and rear: 58". Ground clearance: 7".

CAPACITIES: Fuel tank capacity: 16.4 gallons. Luggage capacity: 30 cubic feet.

WEIGHTS: Kerb weights — Fairlane 500 — 3,215 lbs. Fairlane — 2,985 lbs.

ENGINES:	Super Pursuit	Mustang
	200	289 V8
Bore/Stroke (ins.)	3.68/3.12	4.00/2.87
Compression ratio	9.2:1	9.3:1
BHP @ RPM	121 @ 4,400	200 @ 4,400
Torque @ RPM	190 @ 2,400	282 @ 2,400

LUBRICATION INTERVALS: Oil change (normal conditions) — 6,000 miles. Chassis lubrication — 36,000 miles.

The specifications referred to above were in effect at the time this publication was approved for printing; however, Ford Motor Company of Australia Limited and/or Ford Sales Company of Australia Limited, reserve the right, subject to the laws of any state or territory and the regulations of any competent authority which may be applicable at the time, at its discretion and without notice, to change specifications and prices of the products referred to herein at any time and without incurring any liability whatsoever to any purchaser thereof.

Some of the items illustrated or referred to in this publication are optional at extra cost.



FORD OF AUSTRALIA