

Fairlane
by Ford

This is the luxury motorcar that more people move up to than any other.

This is the Fairlane, by Ford.

Since its introduction, more people have chosen Fairlane than any other make of luxury car — establishing Fairlane as the undisputed leader in the luxury car field. Which is not at all surprising. For it remains alone in its combination of sensible size, outstanding luxury, smoothness of ride, brilliant performance, superb handling . . . and value. It is designed and engineered in Australia, for Australian conditions. Built to the highest standards in the automotive industry. Lasting in its value.

Here we present Fairlane in its two new luxury versions: The Fairlane 500 — a completely equipped sedan featuring individual front seats . . . and the Fairlane Custom, with a full-width front seat and a range of options which allows you to “customize” it to your own personal requirements. Both are more powerful than before, with even more luxurious interiors. The list of standard equipment for each is even longer.

Let your Ford Dealer introduce you to Australia’s most desired luxury car. Drive it. Satisfy yourself that it fulfils your most demanding motoring requirements.



Unique in the world of luxury motoring



Fairlane 500 Sedan

This is the new Fairlane 500.

Its elegant and sophisticated styling is accentuated with discreet ornamentation, dual headlights and luxury wheel covers.

In size, it is the most sensibly proportioned luxury car you can buy today. It is a big car in room, ride and

performance . . . yet it is ideally suited for today's driving conditions.

There are new reserves of power for you to command with a new 5-litre Mustang V8 engine.

Everything is provided that can add to your driving pleasure and convenience — including a new, more direct ratio

power steering and power disc brakes

Also standard on every Fairlane 500 is SelectShift Cruise-O-Matic — the remarkable fully automatic that also works as a manual.

And now — for the ultimate in personal comfort and luxurious appointments, step inside . . .

WHITETALL TYRES AND VINYL ROOF OPTIONAL

Fairlane 500 Sedan

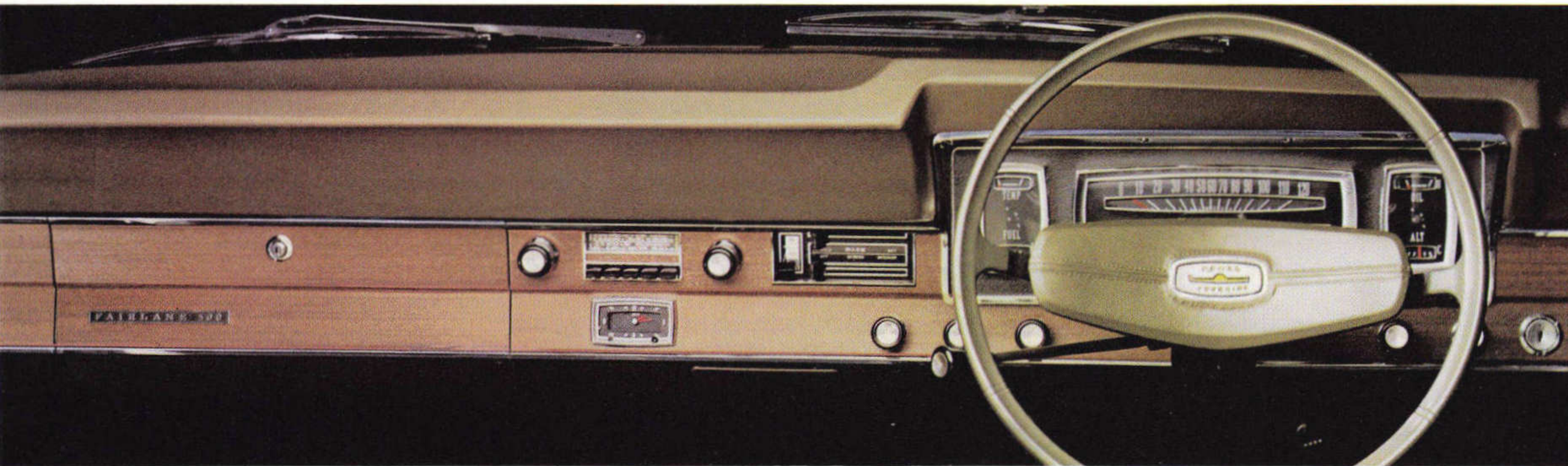
Fairlane 500's individually adjustable Twin-Comfort lounge seats move forward, back and recline to your *exact* personal travelling position. They have extra foam-cushioning and are scientifically contoured for back support and to hold you snugly in position.

The seat-cushion and seat-back upholsteries are perforated to permit them to "breathe" for a luxurious feeling of supple softness and greater comfort.

There are fold-away centre armrests front and rear. A padded section between the front seats allows a third person to be accommodated, if desired.

Extra sound-deadening and insulating materials completely surround the passenger compartment, even line the roof, for the utmost in travelling quietness.

To let you travel comfortably in any weather, there is a 2-speed heater and demister and Fairlane's exclusive "SelectAir" fresh-air ventilation system.



The instrument panel is deeply padded the entire width and a walnut finish accents it with the warmth of timber. The new steering wheel is an exclusive Ford design. The deep-cushioned hub is vinyl covered and, like the wheel itself, colour-keyed to the interior.

Other standard luxuries include: deep-pile carpeting; special reading lamps in the rear pillars; an electric clock. And a long list of safety equipment, detailed on page 15.





Fairlane Custom Sedan

Here you see the new Fairlane Custom Sedan. It offers you the same comfort, convenience and riding qualities that mark far more expensive cars . . . and it brings you new elegance and luxury at a surprisingly modest price.

At the wheel you enjoy "big-car" ride . . . and performance. Standard is the big, new Ford 3.6 litre 6-cylinder engine, teamed with a fully synchromesh manual transmission.

Individual taste plays an important role in choosing Fairlane Custom — for this is truly a "Custom" vehicle. You may order it to suit your precise requirements by selecting from a wide range of options . . . the 5-litre Mustang V8 engine, SelectShift Cruise-O-Matic transmission, power disc brakes, power steering and vinyl roof are among the alternatives you may specify, as you wish.

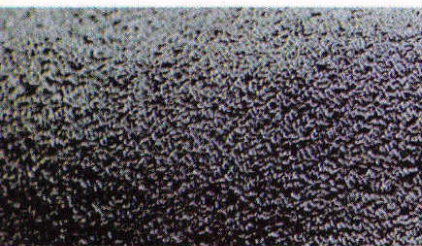
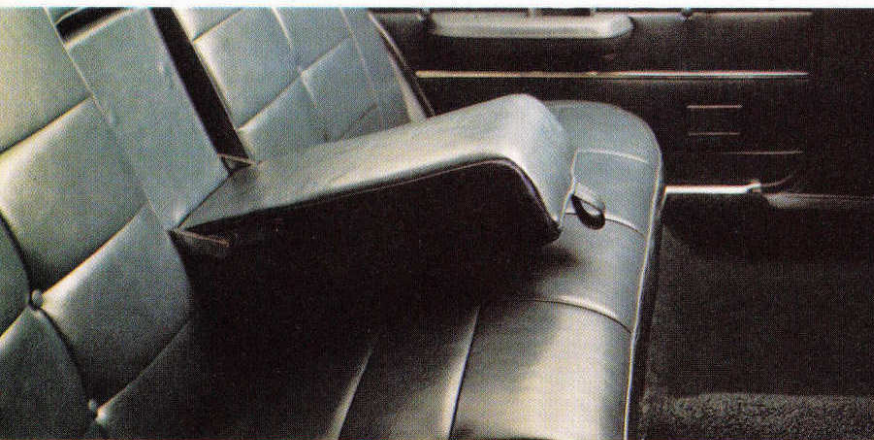
Inside, you enjoy spaciousness and increased comfort . . . as you will see on the next page.

Fairlane Custom Sedan

The Fairlane Custom interior reflects the same attention to detail, the same high quality of materials and finish as the Fairlane 500. However, the Custom is specifically designed for those who prefer the luxury of a full-width front seat.

The Fairlane Custom front seat is widely spacious, deeply relaxing and will easily accommodate three people. Centre fold-away armrests, both front and rear, are standard. The upholstery is supple, expanding-type vinyl executed in a rich button-down design which adds to its eye appeal and comfort. Naturally, all other interior appointments are in keeping with prestige motoring. Wall-to-wall carpeting is underfoot, colour-matched to your choice of upholstery. Sound insulation materials are used extravagantly to isolate the passenger compartment from all exterior noise. The instrument panel and steering wheel hub are completely padded. Fitted equipment includes the "SelectAir" ventilation system as well as a heater-demister, electric windscreen washers and wipers, cushioned sunvisors and reversing lights.

Other safety features, together with a complete list of standard equipment, appear on page 15.





Swift smooth performance with unmatched pleasure behind the wheel.

The engines and transmissions described on this page were chosen to ensure that both luxury Fairlanes — the 500 and the Custom — are equipped as high performance automobiles.

THE ALL-NEW FORD 3.6 LITRE "SIX" provides you with instant acceleration in the lower speed ranges, higher sustained speeds and inbuilt reserves of safety power for passing at highway speeds, or for hauling caravans or boats. Standard on the Fairlane Custom.

THE NEW 5 LITRE MUSTANG V8 is an ultra-high-performing engine — ready, willing and eager to show what it's made of: 210 horsepower, 300 lb./ft. of torque. And that means acceleration and power reserves throughout *all* speed ranges for extra-safe passing and effortless cruising. Standard on Fairlane 500, optional on Fairlane Custom.

TRANSMISSIONS. A new, all-synchromesh 3-speed manual transmission is teamed with 3.6 litre "six" on Fairlane Custom. The lever movement is shorter and easier to handle.

The remarkable SelectShift Cruise-O-Matic transmission provides a fluid, infinitely flexible motion unique among cars. You use it as a fully automatic . . . or, for ultra-high performance or trailing, you may select each gear (and hold it, if you wish), as with a manual. It is standard on Fairlane 500 . . . optional on Fairlane Custom.

OUTSTANDING RIDE AND HANDLING. The Fairlane's distinguished performance qualities are the product of much more than power alone. The width of the track (58") and the length of the wheelbase (116") give flatter cornering, a smoother ride and a tenacious grip on even the most tortuous roads. Big, wide-tread performance-rated tyres give a quiet, comfortable and confident ride.



A Special Invitation



We've made these pages as comprehensive as possible. But there are some things you cannot describe entirely in a booklet. Like the way it feels to be behind the wheel of a Fairlane. The sheer exhilaration of highway driving, the comfort and calm of a city ride in complete luxury, Fairlane style. This you have to experience yourself. Your Ford dealer extends to you a special invitation. Come take Fairlane out of the showroom and see, for your own satisfaction, how elegant and superbly pleasing is the Fairlane way of motoring.

STANDARD SAFETY FEATURES

In addition to Fairlane's basic safety advantage (its superb handling and surefooted ride under all conditions), and to the long list of safety features previously standard on every Fairlane, a number of additional safety items have been added to give you even greater assurance on the road. These include features to reduce the likelihood of an accident occurring... a dual hydraulic braking system, safety rim wheels and performance-and-load-rated tyres, and an outside rear-view mirror. Also included are features to help reduce the likelihood of injury in case of an accident... a deeply-dished shock-absorbing steering wheel with a full-width safety-padded hub. Safety designed controls for instruments and doors. Safety-padding on the wind-screen pillars and around the inside of the door openings (Fairlane 500). Safety-type interior rear vision mirror which "yields away" upon impact. Every Fairlane 500 and Custom has all the safety features listed below as standard equipment:

Front seat belts (manufactured to strict ASA standard), and featuring an exclusive push-button release. Fully cushioned instrument panel padding. Padded safety sun-visors. Anti-glare, shatter-proof interior rear-view mirror that "yields away" upon impact. Deeply dished steering wheel with full-width padded hub. Steering column rearward displacement minimized by front-end structure design. Safety-type "Double-grip" door locks. Padded door-pull/armrests. Recessed interior door handles. Safety design control knobs and window regulator handles. Safety glass all round (including "zone-toughening"). Huge 10-inch diameter brakes — self-adjusting and with thicker linings. (Power disc brakes are standard on Fairlane 500.)

Dual brake lines and dual master cylinder with warning light. Outside rear-view mirror, driver's side. Anti-glare windscreen wiper arms and big 16-inch wiper blades. Electric windscreen washers. Safety-rim wheels and performance-and-load-rated tyres. High-intensity dual headlights. Reversing lights.

STANDARD EQUIPMENT

Fairlane Custom Sedan:
Ford 3.6 litre "Six" engine. Fully synchromesh manual transmission. Luxury full-width front seat. Folding centre armrests front and rear. Fitted, deep-pile carpets. 2-speed heater/demister. "SelectAir" fresh air ventilation system. Reversing lights. Reversible keys. Keyless door locking system. Courtesy lights. Glove-box light. Cigar lighter. Luggage compartment light. Full instrumentation including ammeter and oil pressure gauge. 35-amp alternator.

Fairlane 500 Sedan:
5-litre Mustang V8 engine. SelectShift Cruise-O-Matic transmission. Power steering. Power disc brakes. Individually adjustable, fully-reclining Twin-Comfort front seats. Fitted, deep-pile carpets. 2-speed heater/demister. "SelectAir" fresh air ventilation system. Cigar lighter. Reversing lights. Reversible keys. Keyless door locking system. Courtesy lights on all doors. Glove-box light. Reading lights in rear compartment. Luggage compartment light. 35-amp alternator. Luxury full wheel covers. Electric clock. Full instrumentation including ammeter and oil pressure gauge.

EXTERIOR COLOURS

Jet Black ☐ Polar White ☐ Mountain Blue ☐ Saffron Beige (a) ☐ Academy Grey (a) ☐ Green Haze (a) ☐ Springtime Yellow ☐ Vintage Burgundy* ☐ Sunrise Bronze* ☐ Peacock Green* ☐ Nightmist Blue* ☐ Zircon Green* ☐ Sapphire Blue* ☐ Frosted Pewter* ☐ Stratosphere Grey*
*Metallic
(a) Not available on Fairlane 500

INTERIORS

Fairlane's interiors have a harmonious blend of colour throughout. And each one, of course, is co-ordinated with Fairlane's beautiful exterior finish. Make your choice from 5 tasteful colours for each model:

Fairlane Custom	Fairlane 500
Light Blue	Bluemist
Medium Blue	Light Olive
Royal Red	Parchment
Black	Burgundy
Palamino	Charcoal

All upholsteries are soil-resistant, luxury quality expanding-type vinyl with genuine stitch seams.

OPTIONS

Here are the options available on both Fairlane Custom and Fairlane 500...

Fairlane Custom:

5-litre, 210 horsepower Mustang V8 engine ☐ SelectShift Cruise-O-Matic transmission ☐ Power disc brakes ☐ Power steering ☐ Radial and whitewall tyres ☐ Full-wheel covers ☐ Vinyl roof ☐ Laminated/graduated tint windscreen ☐ Push-button radio ☐ Electric clock

Fairlane 500:

Vinyl roof ☐ Radial and whitewall tyres ☐ Laminated/graduated tint windscreen ☐ Push-button radio

PAINT/RUSTPROOFING

The finish you see on the Fairlane is finer, deeper, more durable. It is eight coats deep... three of them tough "Super Diamond Lustre" acrylic baked enamel to stay newer, longer. Beneath Fairlane's beauty, too, is Ford's unique triple-rust-protection comprising Zinc Primer and Underbody Dip that locks out rust from the body metal, and a special "spray-on" Undercoating on all vital underbody parts providing complete protection underneath.

DEALER SERVICE AND PARTS SUPPLY

Your Fairlane is backed by over 400 Ford Dealers' low-cost specialised service, and the ready supply of genuine low-cost FoMoCo parts.



DIMENSIONS/CAPACITIES

Overall length: 196.1". Overall width: 74.7". Overall height: 55". Wheelbase: 116". Track, front and rear: 58". Ground clearance: 7". Fuel tank: 16.4 gallons. Luggage capacity: 30 cu.ft.

LUBRICATION INTERVALS

Oil change (normal conditions) 6,000 miles. Chassis lubrication 36,000 miles.

WARRANTY

Fairlane 500 and Fairlane Custom give you warranty protection for 12,000 miles or 12 months whichever comes first, excluding tyres and tubes which are warranted by their manufacturer. Every Fairlane is warranted against defects in materials and workmanship for this period. Owners are responsible only for normal maintenance and routine replacement of maintenance items.

ENGINE SPECIFICATIONS

	Ford 3.6-litre Six	5-litre Mustang V8
Bore (Stroke/ins)	3.68/3.46	4.0/3.0
Displacement (Cu.ins/cc)	221/3622	302/4949
BHP @ RPM	135 @ 4400	210 @ 4600
Torque (lb/ft @ RPM)	208 @ 2400	300 @ 2600
Compression ratio	9.3:1	9.0:1

The specifications referred to above were in effect at the time this publication was approved for printing; however, Ford Motor Company of Australia Limited and/or Ford Sales Company of Australia Limited, reserve the right, subject to the laws of any state or territory and the regulations of any competent authority which may be applicable at the time, at its discretion and without notice, to change specifications and prices of the products referred to herein at any time and without incurring any liability whatsoever to any purchaser thereof. Some of the items illustrated or referred to in this publication are optional at extra cost.

FORD SALES COMPANY OF AUSTRALIA LIMITED



Fairlane

Unique in the world of luxury motoring