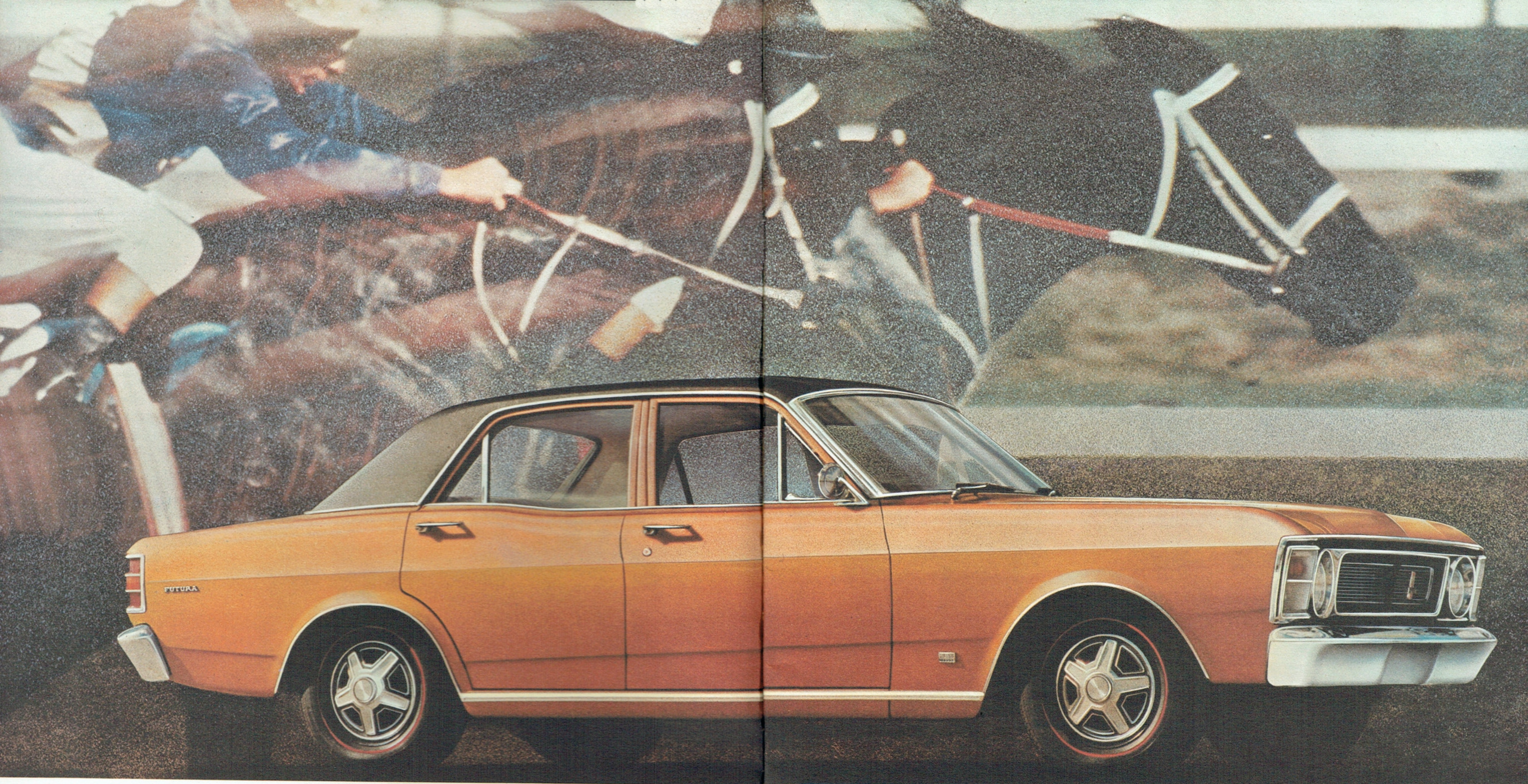


METRO FORD
Modern Dealer
302 ADELAIDE ST., BRIDGEVILLE
Ph. 21-4011



FORD
FALCON



FORD IS NOW!

Here are the exciting new Falcons . . . cars designed with you in mind. Bold-looking cars. Solidly-built cars with more built-in features to add even more value to ownership, more enjoyment behind the wheel.

In style . . . their bold, lithe lines continue to set the trends for others to follow. Big wrap-around park-stop-and-turn indi-

cator lights tell everyone else on the road what you intend to do. Big window areas let you see clearly what others intend to do.

Engines are more powerful and higher-performing. Inside, completely new interiors are replete with comfort appointments. Behind the wheel you'll notice an even better ride from an even wider track—still unmatched in its class. There's a longer list of

safety features, including a collapsible steering column.

And, you're offered the greatest array of options ever to increase your driving pleasure and help you make your Falcon a one-of-its-kind on the road.

Make your move, your car is here. See your Ford Dealer and ride the bold way. *Ford is now!*

Futura:

Boldly styled, superbly fitted—and priced for a pleasant surprise.

Futura — all-new and all excitement. Distinctive style outside. Trimmed for luxury inside. Powered for action.

Interiors are luxuriously crafted in leather-grained vinyl. Deep-cushioned, full width seats offer folding centre armrests. Deep-pile carpeting stretches wall-to-wall. A Fresh-Air heater and demister keeps the interior warm in winter. Twin-control, AirFlow ventilation cools you in summer.

For performance, you have the high-performing 140-horsepower Six and all-synchromesh 3-speed manual transmission. You can also order the hot, new 220-horsepower 2-barrel Mustang V8 . . . and choose from 3 optional transmissions including SelectShift Cruisomatic—the automatic that works as a manual when you want it to — in T-Bar form or on the column.

For your added pleasure is a new, smooth ride . . . spread over a long 111-inch wheelbase with 58.9-inch track for wide-stance stability.

Futura Standard Equipment Highlights

Power Team: 140-Horsepower Six and All-Synchromesh 3-Speed Transmission Choice of 15 Colours in Super Diamond Lustre Enamel 5 Colour-Keyed Leather-Grained Vinyl Interiors Full-Width Seats with Pull-Down Centre Armrests Sound-Deadening and Insulating Materials completely surrounding the passenger compartment — even lining the roof Cockpit-Type Instrument Panel Lockable Glove-Box Glove-Box Light Courtesy Lights operated by all doors Luggage Compartment Light Factory-Applied Undercoating Big, smooth-riding, 6.95 x 14-inch Extra-Low-Profile Tyres Full Wheel Covers 2-Speed Electric Windscreen Washers Reversing Lights Big, Self-Adjusting 10-inch Diameter Brakes All the Ford Standard Lifeguard Design Safety Features (for the complete list see page 22).

Popular Options Include:

11¼-inch Turbo-Cooled and Ventilated Power Disc Brakes Power Steering SelectAire Integrated Air-Conditioning Radio Reclining or Non-Reclining Front Bucket Seats Vinyl Roof Laminated and Graduated-Tint Windscreen Special 'Grand Sport' Rally Pack consisting of (1) GS Stripes along the side, (2) Heavily-chromed GS Full Wheel Covers, (3) Deep-Dish, 3-Spoke, Wood-grained GS Sports Steering Wheel and (4) Special GS Cockpit Instrument Panel The full range of Optional Power Teams and Tyres is shown on page 21.





Fairmont: sleek, smooth -in luxury's lap.

Fairmont — elegant styling outside, new peak of luxury inside, and even more performance. Everything to lift your driving to higher levels of comfort and convenience. Including the quietest ride ever engineered into a car near Fairmont's price.

Try the eager response of its more powerful 140-horsepower Six teamed with 3-speed Fordomatic. Or move on up to a more potent 220-horsepower, 2-barrel Mustang V8 with either T-Bar or column-shift Cruisomatic, or an all-synchro 4-on-the-floor.

Enjoy an even finer Fairmont ride . . . spread over the big 111-inch wheelbase with wider 58.9-inch track for wide-stance stability.

There's much more to tell about Fairmont. An exciting range of options that let you make it as rich or sporty as you like . . . and all its luxury inside . . .

Fairmont: continued:

As you see, luxury is everywhere you look. Twin-Comfort front lounge seats recline to any position you desire. Upholsteries feature "Woven Grain" inserts for additional comfort and "breathing". There are pull-down centre armrests front and rear. Wall-to-wall, deep-pile carpet underfoot.

Fairmont's all-new instrument panel is fully padded — with all instruments recessed for safety. Everything is easy to see, easy to reach — including the FreshAir heater/demister.

All around you, even lining the roof, thick insulating and sound-deadening materials are used extravagantly. Open the glove-box, it lights up. Open the boot and it lights up. In fact, Fairmont lights up a whole new, trend-setting standard of style, luxury and performance unequalled by any other car in its class.

Fairmont Standard Equipment Highlights:

All the items mentioned above, plus: Choice of 14 Colours in Super Diamond Lustre Enamel 5 Colour-Keyed Leather Grained Vinyl Interiors 1 1/4 -inch, Turbo-Cooled and Ventilated Power Disc Brakes Teak-Graining on the Instrument Panel Lockable Glove-Box Centre Dome Light and Special Reading Lights set in the rear pillars AirFlow Ventilation System 2-Speed Electric Windscreen Wipers Push-Button, Electric Windscreen Washers Reversing Lights Full Wheel Covers Factory-Applied Undercoating All the Ford Lifeguard Design Safety Features listed on page 22.

Popular Options Include:

Some of Fairmont's options you'll want to consider: Power Steering SelectAire Integrated Air-Conditioning Push-Button Radio Vinyl Roof Laminated and Graduated-Tint Windscreen Special 'Grand Sport' Rally Pack consisting of (1) GS Stripes along the side, (2) Heavily-Chromed GS Full Wheel Covers, (3) Deep-Dish, 3-Spoke Wood-Grained GS Sports Steering Wheel and (4) Special GS Cockpit Instrument Panel ER 70 Wide-Oval Radial Ply Tyres. The full list of options, including Power Teams and Tyres, is on page 21.





Falcon 500: **Bold, new leader in** **value-packed action.**

Falcon 500 Sedan — a car that looks, feels and rides like nothing else near the price. Bold new styling outside. All-new styling inside. More comfort and luxury items. More action from more powerful engines. An even smoother ride from its long 111-inch wheelbase with wider 58.9-inch track. And just see what happens when you add a few of the exciting options which will help you put *your* individual stamp on the car that leads the way.

Falcon 500: continued:

The comfort we promise comes in many ways.

Plenty of stretch-out space.

Wide, deeply-cushioned seats in supple, leather-grain vinyls.

All around you, even lining the roof, thick insulating and sound-deadening materials to keep road noise where it belongs — outside.

A deep-dished and padded steering wheel that provides a big view of the new Cockpit-style instrument panel.

The comfort of more steel in the body than any competitor — and an exclusive "Torque-Box" chassis — for a more solid, big-car ride.

You can turn your Falcon 500 into one of the sportiest cars on the road . . . with the exclusive "Grand Sport" Rally Pack, buckets, four-on-the-floor, sports-console; you name it for fun, and Ford lets you have it.

Falcon 500 Standard Equipment Highlights:

Power Team: 3.1-litre, 118-Horsepower Six — and 3-Speed All-Synchro manual transmission Choice of 15 Colours in Super Diamond Lustre Enamel 5 Colour-Keyed Leather-Grained Vinyl Upholsteries Big, Self-Adjusting 10-inch Diameter Brakes Smooth-Riding 6.95 x 14 Tyres on 5-inch JJ Wheels with Safety Rims Factory-Applied Undercoating Cockpit-Type Instrument Panel Lockable Glove-Box AirFlow Ventilation System 2-Speed Electric Windscreen Wipers Electric, Push-Button Windscreen Washers All Ford Lifeguard Design Safety Features on page 22.

Popular Options Include:

Here are some of the exciting options available on the Falcon 500 Sedan: High-Performing 3.6-Litre, 140-Horsepower Six Mustang 5-Litre, 220-Horsepower V8 Choice of 4 Transmissions (see "Power Train Availability" on page 21) Grand Sport Rally Pack — GS Stripes along the side, chromed GS Full Wheel Covers, Sports Instrument Panel and Wood-Grained Steering Wheel Reclining or Non-Reclining Bucket Seats 11¼-inch Diam. Turbo-Cooled and Ventilated Power Disc Brakes Power Steering Sports Console (with Floor Shift and Bucket Seats) Vinyl Roof Laminated and Graduated-Tint Windscreen Deep-pile Carpets Heater/Demister SelectAire Integrated Air-Conditioning Full range of High-performance and Radial-Ply Tyres Full Wheel Covers Radios





Falcon Wagons: Big, versatile, rugged.

Check them out. Both Falcon 500 and Fairmont Wagons offer you more newness, more performance, more passenger room and more loadspace than any comparably priced wagons.

In both you'll get 75 cu. ft. load capacity. You can carry cargo over 7-feet long (with the tailgate closed), nearly 5-feet wide and 3-feet high. Rear seat conversion to flat floor space is the easiest of any wagon. You get a more solid and smoother ride spread over a long 111-inch wheelbase, wider 58.9-inch track and extra-wide 7.35 x 14-inch tyres for wide-stance stability.

Standard Equipment Highlights:

Both Models: Extra-Low-Profile 7.35 x 14-inch Tyres on 5JJ Safety-Rim Wheels Factory-Applied Undercoating Cockpit-Type Instrument Panel Sound-Deadening and Insulating Materials all around — even lining the roof AirFlow Ventilation System Lockable Glove-Box 2-Speed Electric Windscreen Wipers Push-Button Electric Windscreen Washers Reversing Lights All Ford Lifeguard Design Safety Features listed on page 22.

Fairmont (Optional on Falcon 500): High-Performing 3.6-Litre Six Automatic Transmission 1 1/4-inch Turbo-Cooled and Ventilated Power Disc Brakes Heater/Demister Deep-Pile Carpet Power-Operated Tailgate Window Full Wheel Covers.

Popular Options (Both Models):

Power Steering SelectAire Integrated Air-Conditioning Laminated, Graduated-Tint Windscreen Radial Ply Tyres 220-Horsepower Mustang V8 and choice of 5 Transmissions Wide range of High-Performance and Radial-Ply Tyres All items listed on the chart on page 21.





Falcon GT:

The ultimate road car,
every boldly styled inch of it.

You ignite with a super-high-performing 290-horsepower 4-barrel V8. You stir a remote-control, close-ratio, 4-on-the-floor all-synchro box. You stop with 11¼-inch Turbo-cooled power discs. You ride on lowered competition suspension with super-duty shocks and special ER 70 wide-oval radial tyres on 6JJ rims.

Take a look at the list of *some* of GT's standard specs — and then settle into its lap of luxury and let it stir your senses. There is no car that handles and feels so responsive, so predictable, so safe.

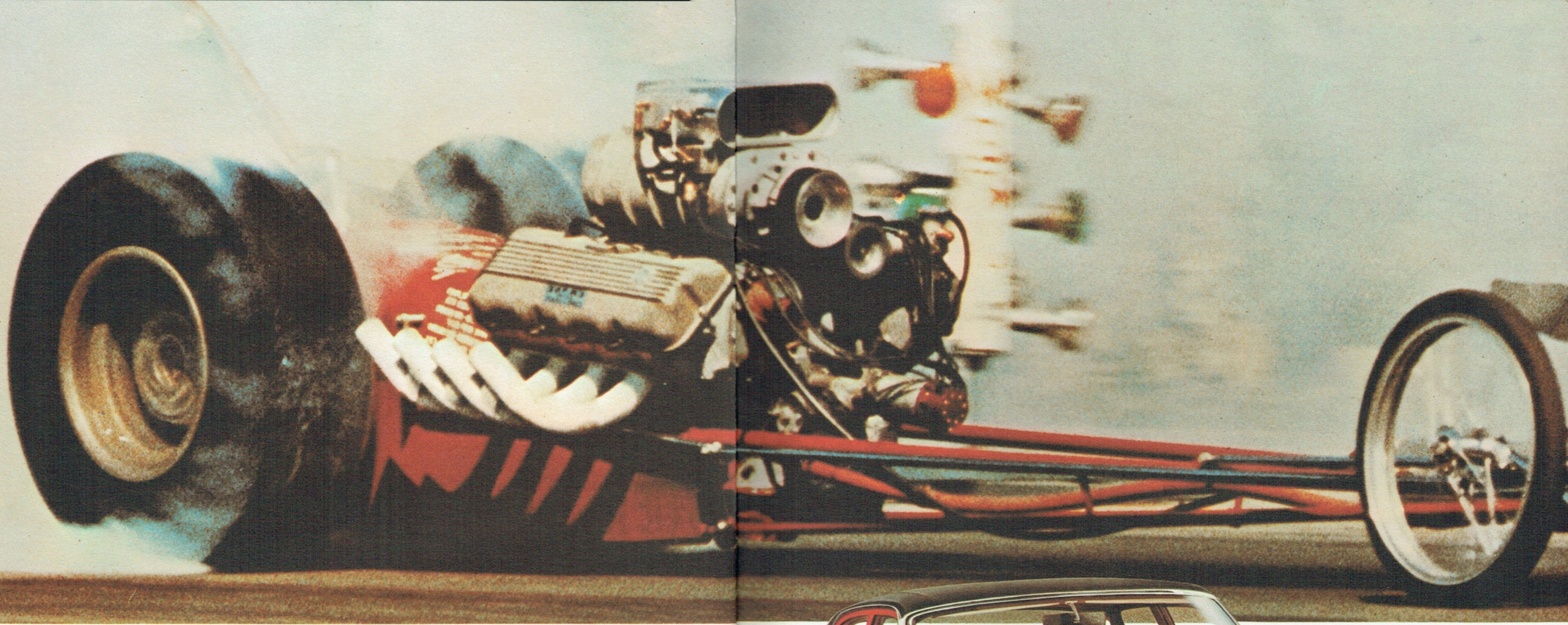
GT Standard Equipment Highlights:

PERFORMANCE ITEMS: Super-High-Performance 4-Barrel, 290-Horsepower V-8 with Dual Exhausts All-Synchromesh, Remote-Control, Close-Ratio 4-on-the-floor Competition Twin-Plate Clutch for High-Torque Transmission Limited-Slip Differential Lowered Competition-Handling Suspension with Super-Duty Shocks Special ER 70 Wide-Oval Radial Tyres on 6JJ Wheels with Safety Rims 11¼-inch Diameter Power Disc Brakes — Ventilated and Turbo-Cooled 36.4-gallon Fuel Tank. LUXURY ITEMS: Twin-Comfort Front Seats with "Woven-Grain" Luxury Vinyls Sports Console Deep-Pile Carpeting Heater/Demister Folding Centre Armrest — rear Complete 'Cockpit' Instrumentation including Tach, Oil, Temp. and Fuel gauges, Speedometer and Odometer Special GT Steering Wheel with Full-Circle, Rim-Squeeze Horn Clock. SAFETY ITEMS: Collapsible Steering Column Padded Steering Wheel Hub, Instrument Panel, Sun-Visors and Door-Pull Armrests Recessed Controls and Instruments Dual Brake System Quartz-Iodine Long Range Driving Lights All other Ford Lifeguard Design Safety Features on page 22.

GT Options Include:

T-Bar Cruisomatic Floor Shift Power Steering Vinyl Roof SelectAir® Integrated Air-Conditioning Laminated Graduated-Tint Windscreen Push-button Radio.





Swift, smooth power with unmatched handling-ease.

Pick any Falcon and you win for yourself a big share of all the action and know-how that puts Ford first in the world of motor sport. (Putting thousands of high-pressure, competitive miles behind every Falcon is the best way of putting thousands of trouble-free, high-performance miles ahead of your Falcon.)

And now you'll travel those miles with even more power, more responsiveness, more handling-ease and riding comfort.

All Falcon engines are now higher-powered and have the torque to provide greater flexibility and response in any speed range.

Falcon's new wider track — still unmatched in its field — brings you even greater stability, safer handling and steadier cornering under all road conditions.

Wider 5JJ wheels and performance-and-load-rated tyres give greater traction and a smoother ride.

Transmissions

To transfer the increased power in all Falcon engines smoothly, there's a new range of transmissions. Two all-synchromesh manuals — a 3-speed on the column and a sporty four-on-

the-floor. If you prefer automatic driving, you can choose from Fordomatic 3-speed, or SelectShift Cruisomatic — the automatic that also works as a manual when you want it to. SelectShift Cruisomatic is available as a column shift, or in the new T-Bar floor shift, whichever you prefer.

Brakes

Braking is also a big feature of Falcon's performance.

Big, self-adjusting 10-inch diameter drum brakes (standard on Falcon 500 and Futura) feature extra-thick bonded linings for long-life.

The new front power disc brakes (standard on Fairmont and Falcon GT) provide the ultimate in stopping power. 11¼-inch diameter, ventilated and Turbo-cooled, and featuring floating calipers, they have exceptionally high fade-resistant characteristics. Power-assisted rear drum brakes are matched to the front disc system to provide smooth, even braking with the minimum pedal pressure.

Engine specifications are shown on page 23. Engine and transmission availability is shown on page 21.



Right: Falcon 500 Sedan with GS Rally Pack.

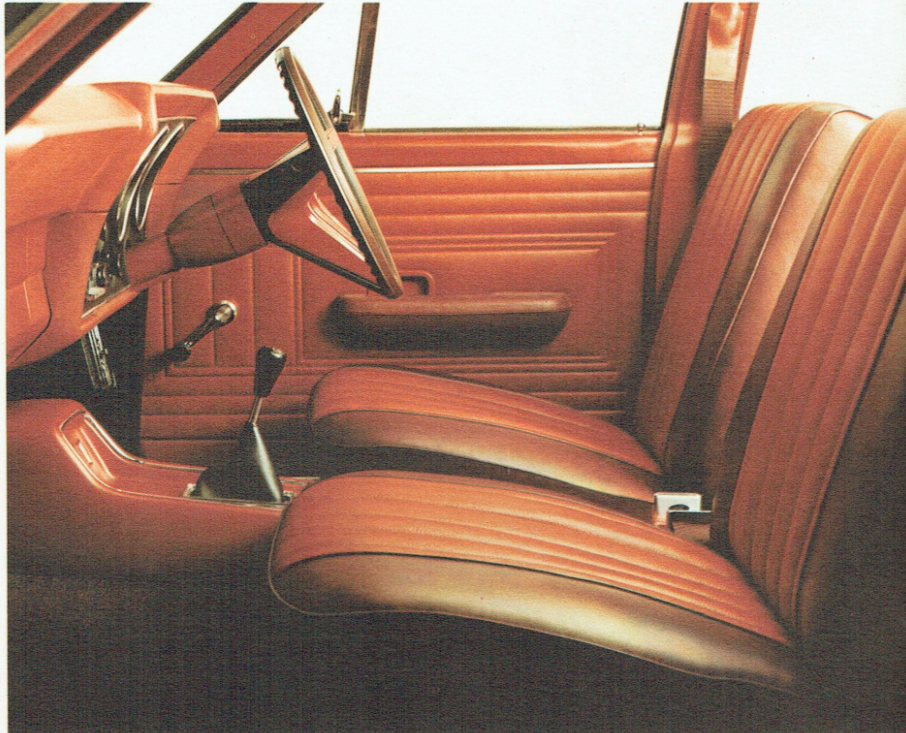
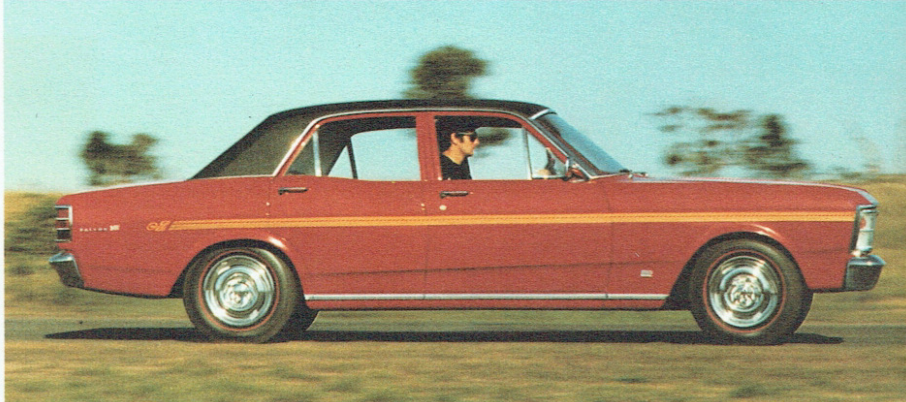
Make up your own Grand Sport

First, pick your model... Falcon 500... Futura... or Fairmont Sedan. Then add the GS Option Package, and exciting things happen.

Along the side, raking GS Rally Stripes sweep to a GS Insignia. Heavily-chromed GS Full Wheel Covers add to the sporty flavour and show your exuberant mood. Inside, there's a deep-dish 3-Spoke Wood-Grained Sports Steering Wheel with a Full-Circle, Rim-Squeeze Horn and a GS Cockpit Dash that really lets you know what's happening.

You take it from there. Add Bucket Seats and a Sports Console that houses your choice of 4-speed, All-Synchro Manual Shift or T-Bar Automatic. Mustang 5-litre, 220-horsepower V8. 1 1/4-inch Turbo-cooled Power Disc Brakes. Power Steering. Air-Conditioning. Tinted and Laminated Windscreen. Vinyl Roof. Wide-Oval Radial Tyres that put extra tread on the road, giving your GS an even lower sportier look.

Falcon's great list of options stretches on and on. The Falcon you choose can be a luxury car... sports car... family fun car... or a blend of all three, just the way you want it to be.



Above: GS Interior with Optional Buckets



GS Wheel Covers



Sports Console and Floor Shift



GS Cockpit-type Instrument Panel and Steering Wheel

HERE'S YOUR FULL RANGE OF OPTIONS

ENGINES/TRANSMISSIONS

	FALCON 500 SEDAN	FALCON 500 WAGON	FUTURA SEDAN	FAIRMONT SEDAN	FAIRMONT WAGON	FALCON GT
3.1-litre, 118-horsepower Six with: All-synchro, 3-speed manual (column shift)	Std	Std	—	—	—	—
Fordomatic 3-speed (column shift)	OPT	OPT	—	—	—	—
3.6-litre, 140-horsepower Six with: All-synchro, 3-speed manual (column shift)	OPT	OPT	Std	OPT(f)	OPT(f)	—
Fordomatic 3-speed (column shift)	OPT	OPT	OPT	Std	Std	—
Cruisomatic 3-speed (column shift)	OPT	OPT	OPT	OPT	OPT	—
Cruisomatic T-Bar 3-speed (floor shift)	OPT	OPT	OPT	OPT	OPT	—
All-synchro, 4-on-the-floor manual	OPT	OPT	OPT	OPT	OPT	—
Mustang 5-litre, 220-horsepower V8 with: All-synchro, 3-speed manual (column shift)	OPT	OPT	OPT	OPT	OPT	—
Cruisomatic 3-speed (column shift)	OPT	OPT	OPT	OPT	OPT	—
Cruisomatic T-Bar 3-speed (floor shift)	OPT	OPT	OPT	OPT	OPT	—
All-synchro, 4-on-the-floor manual	OPT	OPT	OPT	OPT	OPT	—
Special 290-horsepower, 4-barrel V8 with: Cruisomatic 3-speed (floor shift)	—	—	—	—	—	OPT
All-synchro, 4-on-the-floor manual	—	—	—	—	—	Std

POWER EQUIPMENT

Power disc brakes (front) (a)	OPT	OPT	OPT	Std	Std	Std
Power steering (b)	OPT	OPT	OPT	OPT	OPT	OPT
Power tailgate window (wagons)	—	OPT	—	—	Std	—

LUXURY EQUIPMENT

Fresh-Aire Heater	OPT	OPT	Std	Std	Std	Std
SelectAire integrated air-conditioning (c)	OPT	OPT	OPT	OPT	OPT	OPT
Deep-pile carpet	OPT	OPT	Std	Std	Std	—
Full-width front seat with folding centre armrest	—	—	Std	OPT	OPT	—
Bucket seats (fixed backs) (d)	OPT	OPT	OPT	—	—	—
Reclining bucket seats (d)	OPT	OPT	OPT	Std	Std	Std
Sports console (e)	OPT	OPT	OPT	—	—	Std
Electric clock	OPT	OPT	OPT	OPT	OPT	Std
2 rear-seat lap belts	OPT	OPT	OPT	OPT	OPT	OPT
2 rear-seat lap-sash belts	OPT	OPT	OPT	OPT	OPT	OPT
1 rear-seat centre lap belt	OPT	OPT	OPT	OPT	OPT	OPT
Long-range radio (push-button or manual)	OPT	OPT	OPT	OPT	OPT	OPT

EXTERIOR ITEMS

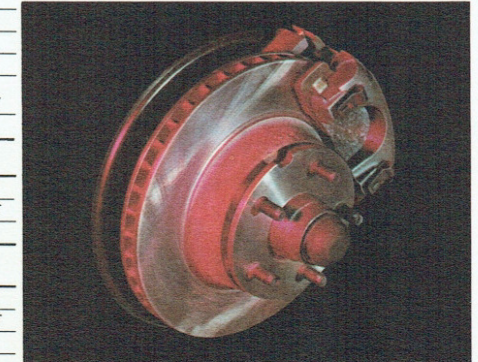
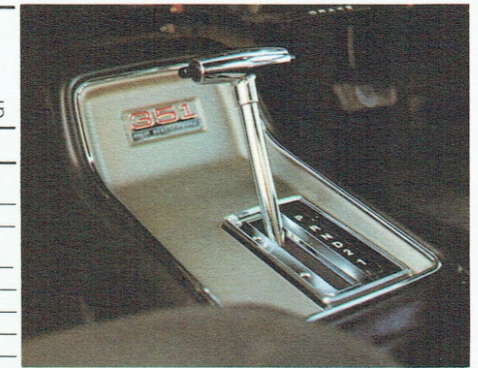
Vinyl covered roof — black or parchment	OPT	—	OPT	OPT	—	OPT
Styled full wheelcovers	OPT	OPT	Std	Std	Std	—
Exterior rear-view mirror (passenger's side)	OPT	OPT	OPT	OPT	OPT	—
Remote control exterior mirror (driver's side)	OPT	OPT	OPT	OPT	OPT	—
Grand Sport rally option package (described on the opposite page)	OPT	—	OPT	OPT	—	—

OTHER

Laminated and graduated-tint windscreen	OPT	OPT	OPT	OPT	OPT	OPT
Limited-slip differential	OPT	OPT	OPT	OPT	OPT	Std
Heavy-duty battery	OPT	OPT	OPT	OPT	OPT	Std
Super-duty shock absorbers	OPT	OPT	OPT	OPT	OPT	Std
Special heavy-duty dust package (needed only under extreme dust conditions)	OPT	OPT	OPT	OPT	OPT	OPT

TYRES AND WHEELS

Extra-low-profile: 6.95 x 14, black side-wall, 5JJ safety wheels	Std	—	Std	Std	—	—
6.95 x 14, white side-wall, 5JJ safety wheels	OPT	—	OPT	OPT	—	—
7.35 x 14, black side-wall, 5JJ safety wheels	OPT	Std	OPT	OPT	Std	—
7.35 x 14, white side-wall, 5JJ safety wheels	OPT	OPT	OPT	OPT	OPT	—
Radial-ply: 185 x 14, black side-wall, 6JJ safety wheels	OPT	OPT	OPT	OPT	OPT	—
Special ER70 x 14, red side-wall, wide-oval 6JJ safety wheels	OPT	OPT	OPT	OPT	OPT	Std



Footnotes to Option Chart

Code: "Std" means standard equipment.
"OPT" means optional at extra cost.

- Power Disc Brakes with floating calipers are 1 1/4-inch diameter, ventilated and Turbo-cooled for exceptionally high fade-resistant characteristics. Require only light pedal pressure. Recommended with V8 engines.
- Power Steering features fast 16 to 1 ratio.
- SelectAire Integrated Air-conditioning available only with 3.6 litre Six and V8 engines.
- Carpet must be fitted with Bucket Seats.
- Sports Console available only with Floor Shifts and Bucket Seats.
- All-synchromesh 3-speed manual may be ordered with the 3.6 litre Six on Fairmont Sedan and Wagon at reduced cost.

Ford Lifeguard Design Safety Features:

Every Falcon includes all of these Ford Lifeguard Design Safety Features:

- Collapsible Steering Column
- Impact-Absorbing Steering Wheel with Full-Width Padded Hub
- Padded Instrument Panel
- Padded Sun Visors
- Padded Door-Pull Armrests
- Recessed and Safety-Design Control Knobs
- Recessed Interior Door Handles
- Double-Grip Safety Door Locks
- Non-Glare, Shatter-Proof, Inside Rear View Mirror that "yields away" upon impact
- Exterior Rear View Mirror
- 2-Speed Electric Windscreen Wipers
- Push-Button, Electric Windscreen Washers

- Non-Glare Windscreen Wiper Arms with long 16-inch blades
- Thick Safety Plate Glass Windscreen with zone-toughened area in front of driver — and Safety Glass all round
- Dual Hydraulic Brake System with Warning Light
- Safety-Rim Wheels and Performance-and-Load-Rated Tyres
- Front Lap-Sash Seat Belts and Rear Seat and Centre-Front Seat Anchorage Points
- Safety-Designed Coat Hooks
- High-Intensity Headlights
- Wrap-Around Front Turn-Indicator and Parking Lights
- Wrap-Around Tail, Stop and Turn-Indicator Lights
- Reversing Lights

Specifications:

Clutch (Manual Transmission). Diaphragm spring type, single cushion disc, dry plate, hydraulically operated. 6 cylinder engines: Diam. 9.25". Friction Area 77.8 sq. ins. 8 cylinder engine: Diam. 10.00". Friction Area 85.5 sq. ins. GT: Twin-plate diaphragm spring type. Dry-plate, hydraulically operated.

Manual Transmission. Column shift: 3 forward speeds all synchro — 1 reverse. Ratios: 6 cylinder: 1st — 2.95; 2nd — 1.69; top — 1.00; reverse — 3.67. 8 cylinder: 1st — 2.71; 2nd — 1.69; 3rd — 1.00; reverse — 3.37.

Four-on-the-floor Manual. All synchro. Ratios (to 1): 1st — 2.78; 2nd — 1.93; 3rd — 1.36; Top — 1.00; Reverse — 2.78.

Automatic Transmissions. 3.1 and 3.6 litre engines with Fordomatic or Cruisomatic: Ratios (to 1): 1st — 2.39; 2nd — 1.45; 3rd — 1.00; Reverse — 2.09. 5 litre Mustang V8: Cruisomatic, 1st — 2.46; 2nd — 1.46; 3rd — 1.00; Reverse — 2.20. GT 290-hp V8: Cruisomatic, 1st — 2.40; 2nd — 1.47; 3rd — 1.00; Reverse — 2.00.

Rear Axle. Ratios (to 1) (Manual/Automatic) 3.1 Litre — 3.50/3.50. 3.6 Litre — 3.23/3.50. 5.0 Litre — 2.93/2.93. GT — 3.25.

Front Suspension. Angle-poised ball-joint type. Heavy duty coil springs with hydraulic shock absorbers. Torsion bar ride stabilizer.

Rear Suspension. Semi-elliptic asymmetrical, variable rate leaf springs. Diagonally mounted hydraulic shock absorbers. Rubber bushed shackles.

Steering. Recirculating ball type. Steering gear ratio 20:1 (GT and Optional Power Steering — ratio 16:1) Steering Wheel, 16 in. diam. Turning circle 36.6 ft.

Brakes. Dual Line system with inbuilt warning light on instrument panel. Self-adjusting hydraulic, 10" diam. front and rear. Solid cast front drums. Bonded linings — area 154.4 sq. ins. Floating calliper type power disc front brakes, turbo-cooled and ventilated, 11.25" diam., optional; standard GT and Fairmont.

Wheels and Tyres. Refer chart page 21.

Weights. Approximate kerb weight with 3.1 Litre manual transmission. Sedans — from 2,972 lb., Wagons — from 3,132 lb. Add 28 lb. for Fordomatic, 37 lb. for Cruisomatic.

Fuel Tank Capacities. Sedans 16.4 gals. Wagons 13.6 gals. GT 36.4 gals.

Dimensions. Overall length, sedans — 184.6", wagons — 190.3". Overall width, sedan & wagon — 73.6". Overall height, sedans — 55.8", wagons — 56.2". Wheelbase — 111". Track front — 58.9", rear — 58.5". Ground clearance — 6.15" sedan, 6.35" wagon.

Warranty. Falcon gives you warranty protection for 12,000 miles or 12 months whichever comes first, excluding tyres and tubes which are warranted by their manufacturer. Every Falcon is warranted against defects in materials and workmanship for this period. Owners are responsible only for normal maintenance and routine replacement of maintenance items.

Low-cost Dealer Service & Parts Supply. Your Ford Falcon is backed by over 400 Ford Dealers' low-cost specialised service, and the ready supply of genuine low-cost Ford and Autolite parts.

The specifications referred to herein were in effect at the time this publication was approved for printing; however, Ford Motor Company of Australia Limited and/or Ford Sales Company of Australia Limited, reserve the right, subject to the laws of any state or territory and the regulations of any competent authority which may be applicable at the time, at its discretion and without notice, to change specifications and prices of the products referred to herein at any time and without incurring any liability whatsoever to any purchaser thereof. Some of the items illustrated or referred to in this publication are optional at extra cost.

FORD SALES COMPANY OF AUSTRALIA LIMITED
Reg. Office: 1735 Sydney Rd., Campbellfield, 3061

Engines	3.1 Litre 118 hp Six	3.6 Litre 140 hp Six	5 Litre 220 hp V8	GT 290 hp V8
Cylinders/Valves	6/OHV	6/OHV	8/OHV	8/OHV
Displacement (Cu. Ins./CC)	188/3080	221/3622	302/4949	351/5750
Bore/Stroke (ins)	3.68/2.94	3.68/3.46	4.0/3.0	4.0/3.5
Comp. Ratio (To 1.)	8.7	9.3	9.5	10.7
Max. BHP at RPM	118 @ 4400	140 @ 4400	220 @ 4600	290 @ 4800
Max. Torque (lb/ft) at RPM	180 @ 2400	210 @ 2400	300 @ 2600	385 @ 3200

6 cylinder engines feature 7 main bearing crankshaft — all engines hydraulic valve lifters.

FALCON 