



MONZA 2+2

Chevrolet

The MONZA 2+2—Chevrolet's all-new sporty subcompact for 1975. Available in a two-door hatchback coupe, the Monza unveils a new body design from the bold twin-unit rectangular headlights to the wrap-around taillights. Standard equipment for the Monza, which is built on a 97-inch wheelbase, includes a 4-cylinder 140 cubic-inch aluminum block engine teamed with a four-speed manual transmission to provide economical performance. A wide variety of options is also available, such as Chevrolet's new 262 cubic-inch V8 engine, Turbo Hydra-matic transmission, power brakes, power steering, aluminum wheels, stowaway spare tire, air conditioning, AM/FM stereo radio, and tilt steering wheel.



VEGA Hatchback Coupe with GT Option

Starting its fifth year on the road, the 1975 subcompact Chevrolet VEGA adds to its established appeal with numerous advances and refinements that contribute to comfort and ride quality. Vega's distinctive styling is retained for 1975, but important product improvements and added options are available to provide greater comfort, luxury, and convenience for buyers. These changes cover improved engine and front suspension equipment plus new available options,

including an expanded selection of nine vinyl roof covers, power brakes, AM/FM stereo radio, and Comfortilt steering wheel. Vega's variety-packed line-up features standard notchback and hatchback coupes, station wagon, panel express truck, LX notchback coupe and Estate wagon, plus an available GT Estate wagon and GT hatchback coupe and wagon. Standard on all Vegas is a gas-saving, 140 cubic-inch 4-cylinder engine and three-speed manual transmission.



VEGA Station Wagon

Chevrolet

The impressive list of improvements on Chevrolet's 1975 NOVA range from a new body design, with greater glass area, a double roof panel, and new grille and bumper design, to the addition of four top-of-the-line luxury models. Along with the new LN (Luxury Nova) coupes and sedans, the line includes models in the regular Nova and Custom Nova series—making a total of sixteen models in all. In addition to the new Nova body and styling features, the LN models are distinguished by special exterior striping and trim items, special full wheel covers and insignia, and a luxurious interior decor. Either an improved 250 cubic-inch 6-cylinder or new 262 cubic-inch V8 engine is standard equipment. Nova's wheelbase is 111 inches.

NOVA LN Coupe



NOVA LN 4-Door Sedan



Chevrolet

Chevrolet's CORVETTE comes on stronger than ever in 1975 with significant body, chassis, and engine improvements. Among the important advances are new front and rear bumper systems and modifications of front springs and shock absorbers for vehicle weight variations. In a class all by itself as America's only production sports car, the Corvette is available in both two-door coupe and convertible models.

CORVETTE



CAMARO Type LT



Chevrolet's CAMARO for 1975 is offered in three versions on a 108-inch wheelbase—the economical 6- and 8-cylinder sport coupe and the Type LT with added luxury and driving equipment items. Camaro's new look is highlighted by a wrap-around rear window treatment, a new optional sport decor package, and more luxurious interiors, including a new leather-trimmed seat option available for the Type LT.

ASTRE Hatchback Coupe

Pontiac

Pontiac enters the subcompact field in 1975 with the introduction of the ASTRE, offered in hatchback and station wagon models. Astre has a 97-inch wheelbase and is powered by a standard 140 cubic-inch 4-cylinder overhead cam engine. A wide array of options is available, including air conditioning, electric rear window defroster, AM/FM stereo radio, tilt steering wheel, and power steering. The Astre SJ models feature specific trims and other equipment. The Astre hatchback and Astre Safari station wagon can also be ordered with a GT sports option package.

*ASTRE SJ Safari*

Pontiac



VENTURA CUSTOM 4-Door Sedan

Pontiac's FIREBIRD combines sports car styling with impressive ride and performance. The Firebirds feature a new low horizontal look for 1975. A new wrap-around rear window provides added visibility and a clean, modern appearance. In all, there are four hardtop coupe models—the standard Firebird, the stylish Esprit, and the performance-oriented Formula and Trans Am.

FIREBIRD

VENTURA—Pontiac's sporty yet sensible compact car has all-new design features for 1975. Distinctive grille ports highlight the new front end while the roof lines are changed to provide more glass area. Models available include a coupe, hatchback coupe, and four-door sedan in the Ventura and Ventura Custom series. These models, all on a 111-inch wheelbase, are also available in the all-new top-of-the-line Ventura SJ series, with features associated with larger cars—luxurious interior trim, special body accent stripes, front seat console with bucket seats, special "SJ" identification... and much more.



Oldsmobile

OMEGA
Coupe

OMEGA SALON 4-Door Sedan



Oldsmobile's compact OMEGA has received extensive body and chassis changes for 1975 and has expanded its line-up to six models, including the all-new Omega Salon which is available in the same three body styles as the base Omega—coupe, hatchback coupe, and sedan. Omegas are built on a 111-inch wheelbase and offer a 250 cubic-inch 6-cylinder engine as standard equipment. Available engines are the 350 cubic-inch V8 and Oldsmobile's new 260 cubic-inch V8. Featured on the Salon models are reclining front bucket seats, a headlamp dimmer switch built into the turn signal lever, Salon steering wheel, and a center console.

Buick

SKYHAWK—Buick's new subcompact for 1975—offered in a four-passenger hatchback coupe model. The 97-inch wheelbase Skyhawk comes equipped with an economical and efficient power train—the new Buick 231 cubic-inch V6 engine and four-speed manual transmission. Available comfort and convenience options include air conditioning and an adjustable driver's seatback.



SKYHAWK





Buick

APOLLO 4-Door Sedan

APOLLO, shown above, is Buick's compact four-door sedan on a 111-inch wheelbase. The new six-window roofline gives the Apollo sedan a brand new appearance for 1975.

The APOLLO coupe has a new name—Skylark. Also available is the all-new Skylark S/R coupe, shown below, which features velour-covered bucket seats, a center console that combines storage space with a transmission shift lever, and a rallye steering wheel.



SKYLARK S/R Coupe



Opel

Shown at the left is the 1974 Opel MANTA LUXUS—a two-door sport coupe. Opel's 1975 models are expected to be introduced in the U.S. after January 1, 1975. Other models in the 1975 line-up will include the Manta, Manta GTE, Opel 1900 station wagon, Model 51 two-door sedan, and the Model 53 four-door sedan.

MANTA LUXUS

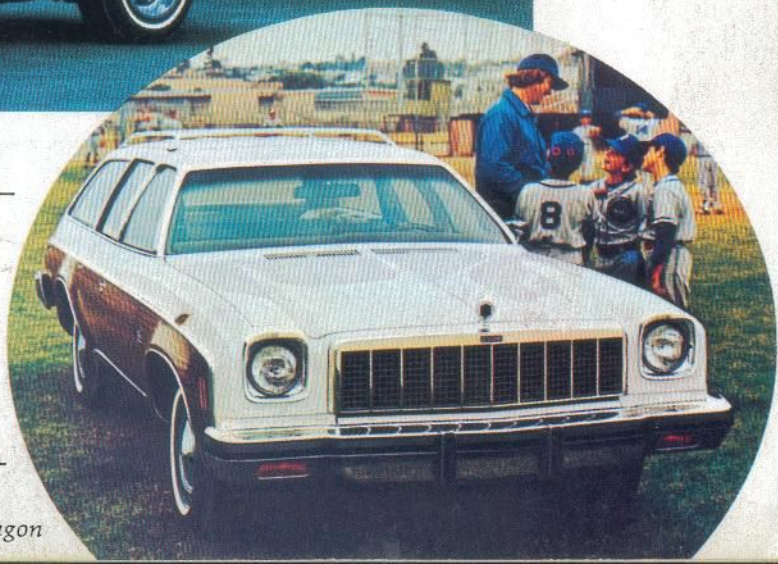
Chevrolet



MALIBU CLASSIC Colonnade Hardtop Coupe

CHEVELLE for 1975 offers a combination of good things—mid-size, mid-price, comfort, easy handling, and a strong reputation for value. Seventeen models are offered in three series—the top-of-the-line Malibu Classic, a sporty Laguna Type 5-3 (to be introduced later in the model year), and the lowest-priced Chevelle of all—the Malibu. A new front- and rear-end design gives all Chevilles, including the line's six station wagons, a different appearance for 1975. Power steering is standard on all V8 models. New available items include cruise control and intermittent windshield wipers.

MALIBU CLASSIC Estate Wagon





Pontiac

Pontiac's 1975 GRAND AM offers a smooth ride and responsive handling in its two and four-door colonnade models. The sporty Grand AM features a one-piece rubber-like urethane front-end panel that flexes at low speed impact, then springs back to its original shape. A body-colored rear bumper is new for 1975.

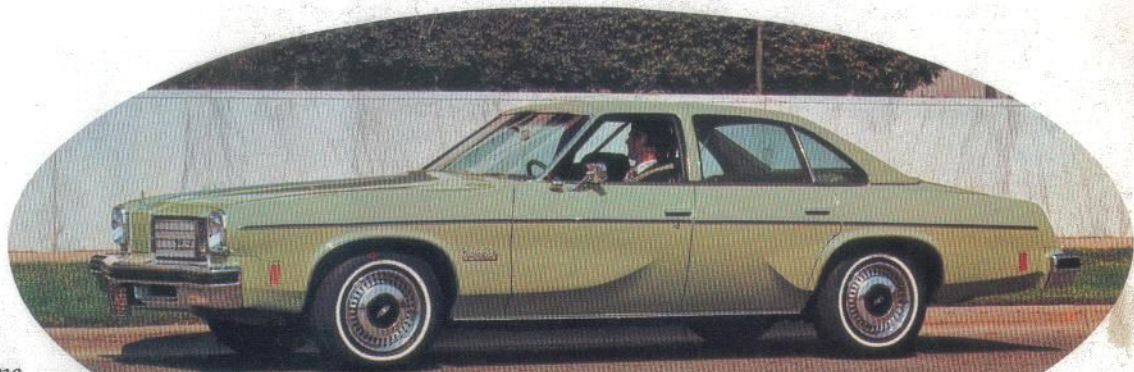


GRAND AM
Colonnade Hardtop Coupe

LE MANS—Pontiac's lowest-priced mid-size car. There are nine different models to choose from in the Le Mans series, including four Safari station wagons. At the top-of-the-line is the Grand Le Mans which features new front-end styling and a new fiberglass-reinforced front-end panel.

GRAND LE MANS *Colonnade Hardtop Coupe*

Oldsmobile



CUTLASS 'S' Colonnade Hardtop Coupe



CUTLASS SALON
Colonnade Hardtop Sedan

Oldsmobile's mid-size CUTLASS line-up for 1975 offers 11 models—two basic Cutlass models, one Cutlass S coupe, four Cutlass Supremes, two Vista Cruisers, and two top-of-the-line Cutlass Salon models. For fuel economy, the 250 cubic-inch L6 engine and a three-speed manual transmission are standard on all Cutlass models except the Cutlass Salon and station wagon models. The Cutlass Salon has a 260 cubic-inch V8 and Turbo Hydra-matic transmission as standard equipment. The Cutlass station wagons offer a 350 cubic-inch V8 and Turbo Hydra-matic transmission as standard equipment.

Buick



*CENTURY SPECIAL
Colonnade Hardtop Coupe*

Buick's mid-size 1975 REGALS have a refined front appearance featuring a new grille texture and modified rectangular park and turn lamps. Standard equipment on the Regal colonnade hardtop sedan and coupe models includes a stand-up hood crest, which identifies all 1975-model Regals, the new economical Buick V6 engine, and three-speed manual transmission.

CENTURY REGAL Colonnade Hardtop Sedan

CENTURY and Century Custom two-door coupes, four-door sedans, and station wagons give you Buick quality in a maneuverable, mid-size car. The Century Special is a new coupe which has been designed for reduced weight and improved fuel economy. Buick's new 231 cubic-inch V6 is the only engine available in the Century Special.



Chevrolet

MONTE CARLO LANDAU



Chevrolet's MONTE CARLO enters 1975 with a new look including its restyled grille and new wrap-around taillamps in the rear. Available luxurious interiors feature new trim and fabrics and a choice of either a new 50/50 reclining passenger seat or swivel bucket

seats. Standard engine for the Monte Carlo coupe or Landau is a 350 cubic-inch V8 with a three-speed manual transmission. Available power plants include the 400 and 454 cubic-inch V8's with Turbo Hydramatic transmission.

Pontiac

Pontiac's personal car, the GRAND PRIX, features a stronger vertical accent in front styling in a bold interpretation of Pontiac's traditional front split-center theme. A stylish rear quarter window enhances the luxury appearance of the car. The Grand Prix LJ is a new available luxury option for 1975 and is highlighted by a special paint treatment with accent stripes and velour seat trim.

GRAND PRIX LJ



Chevrolet



CAPRICE
CLASSIC
Sport Sedan

Room and comfort are two good reasons for selecting a full-size car, and Chevrolet's 1975 CAPRICE CLASSIC, IMPALA, and BEL AIR models fill these requirements and others as well. Adding to the new looks of Chevrolet's full-size cars are two new roof lines—a four-door pillar roof design for the Caprice Classic, Impala, and Bel Air series and a new sport sedan profile for the Caprice Classic and Impala. The standard power plant for all full-size Chevrolets, except the station wagon models, is the 350 cubic-inch V8 engine with Turbo Hydra-matic transmission. A 400 cubic-inch V8 is standard on station wagons. The Caprice Classic is also available in a convertible model.



IMPALA *Sport Coupe*

Oldsmobile

Oldsmobile's front-wheel drive TORONADO for 1975 is offered in two models—a Custom coupe and the Brougham coupe. Both have a new rectangular opera window in the rear quarter for an added look of luxury. A 455 cubic-inch V8 engine, Turbo Hydra-matic transmission, power windows, power steering, and power brakes (with front discs) are just a few of Toronado's many standard features.

Oldsmobile's NINETY-EIGHT models receive fresh front and rear appearance treatments for 1975, as do Oldsmobile's other lines of full-size cars—DELTA 88, DELTA 88 ROYALE, CUSTOM CRUISER, and TORONADO. Coupe and sedan models are available in



TORONADO

both the Ninety-Eight Luxury and Regency series with a host of conveniences and power assists as standard equipment, including a 455 cubic-inch V8 engine and Turbo Hydra-matic transmission. The Delta 88 Royale is also available in a convertible model.



NINETY-EIGHT
REGENCY
Sedan

Buick



ELECTRA LIMITED Hardtop Coupe

Design changes for 1975 provide a noticeable new appearance to Buick's ELECTRA LIMITED and ELECTRA 225 models. A new available trim option—the Park Avenue—is in plush, pillowed velour with 40/40 split seats in front separated by a velour-covered console.

Buick's personal luxury car, the RIVIERA, returns with a new front-end design for 1975. As on all other full-size Buicks—ELECTRAS, LE SABRES, and ESTATE WAGONS—Turbo Hydra-matic transmission, power brakes (with front discs), and power steering are standard equipment. The Le Sabre Custom is available in a convertible model.

RIVIERA





FLEETWOOD ELDORADO Coupe

Cadillac

FLEETWOOD ELDORADO—Cadillac's elegant personal car available in both convertible and coupe models. Featuring a number of design innovations, the front-end styling of the Eldorado, like all 1975 Cadillacs, is accented by a newly designed grille and



FLEETWOOD ELDORADO Convertible

rectangular headlamps. Additional design refinements on the front-wheel drive Eldorado include new lighting arrangements and a new fixed rear quarter window on the coupe, providing a larger glass area than in past models.



FLEETWOOD
BROUGHAM

Cadillac

FLEETWOOD BROUGHAM—In its styling, ride, and handling, the 1975 Fleetwood Brougham stands out as one of the world's great sedans. One efficient

powerplant—the standard 500 cubic-inch, four barrel V8 engine—powers the Fleetwood Brougham and all other 1975 Cadillac models.

CALAIS Sedan

CALAIS—Available in both coupe and sedan models. Standard equipment includes Turbo Hydra-matic transmission, power windows, power steering, power brakes (with front discs), Automatic Climate Control, lamp monitors, digital electric clock, power door locks, AM/FM radio with automatic power antenna, soft ray glass, and wide stripe steel-belted radial ply whitewall tires.





GMC MOTOR HOME

Recreational Vehicles

General Motors has kept the recreational vehicle enthusiast in mind with its 1975 fleet of hard-working, smart-looking vehicles. Whatever your needs may be—family vacations, outdoor living, more towing power, or personalized transportation—GM has the recreational vehicle to fill your requirements.

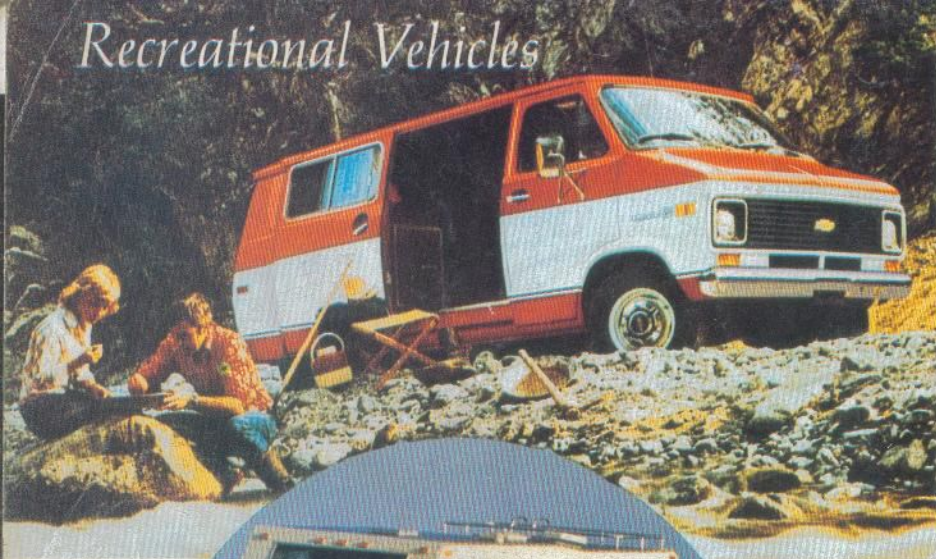
GMC's distinctive front-wheel drive MOTOR HOME is powered by a standard 455 cubic-inch V8 engine teamed with a three-speed Turbo Hydra-matic transmission. New for 1975 is the ELEGANZA II which features luxurious interior appointments, including custom furniture and cabinetry. The Motor Home is built on a unique low-frame chassis with an aluminum and fiberglass body and offers complete living areas.

Chevrolet's BLAZER and GMC's JIMMY are durable 106.5-inch wheelbase vehicles that can be equipped with trailer towing hitch platforms. Both are available in either full-time four-wheel drive or two-wheel drive models, with 6-cylinder or V8 engines, and both can be ordered as an open model or with a hardtop that includes a padded roll-bar plus tailgate and crank-down window.

CHEVROLET BLAZER



Recreational Vehicles



CHEVY VAN



CHEVROLET FLEETSIDE PICKUP with Dual Rear Wheel Option

Chevrolet's FLEETSIDE PICKUP is America's favorite light truck, featuring tough, double-wall Chevy construction in the cab and box. Fleetside Pickups are offered in five basic series on three different wheelbases—nine models in all. Dual rear-wheels are available for added stability when carrying camper bodies. CHEVYVANS are offered in six basic models—all easy handling, smooth riding, and quiet. With their room and versatility, Chevys lend themselves to a wide range of recreational, vocational, and appliance service applications. Chevrolet's CUT-AWAY VAN can be ordered as the chassis for a mini motor home.

CHEVROLET CUTAWAY VAN with Mini Motor Home



CHEVROLET BEAUVILLE Sport Van



CHEVROLET CHEYENNE SUPER C20 Pickup

Available in 23- or 26-foot overall lengths, they will be powered by a 455-cubic-inch V8 engine.

The Chevy BLAZER and GMC JIMMY are available in both two- and four-wheel drive models. Chevrolet's SPORT-VAN and GMC's RALLY have cargo space of up to 260-cubic-feet and can carry up to 12 people. Both can be converted into complete camping units.

GMC and Chevrolet SUBURBAN models feature a new four-door design with either a tailgate or wide opening double rear doors that swing flat for close-up loading of their generous 143.5-cubic-feet of load space.

For families with campers and trailers, Chevrolet and GMC pickups are built for strength and comfort. A new 6-passenger cab is available as a pickup or cab chassis, both of which readily adapt to either a commercial or recreational body.



GMC SUBURBAN