

Sigma



**Sigma
Colour & Trim
Selector.**

VINYL ROOF



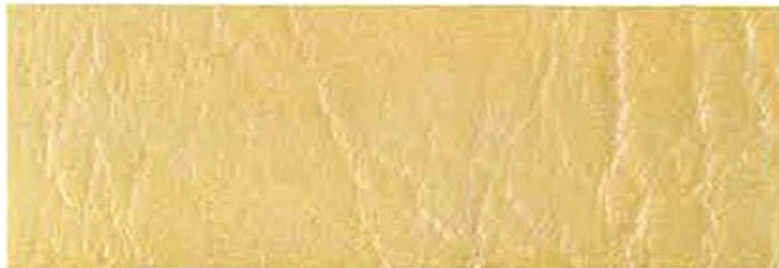
LIGHT BLUE



CARAMEL



TEAL



SANDALWOOD BEIGE

COLOUR COMBINATIONS

CHRYSLER GH SIGMA SEDAN AND WAGON

BODY COLOURS (M) = METALLIC	TRIM COLOURS				VINYL ROOF			
	LIGHT BLUE	CARAMEL	S/WOOD BEIGE	TEAL	LIGHT BLUE	CARAMEL	S/WOOD BEIGE	TEAL
FROST BLUE (M)	x				x			
MEDIUM BLUE (M)	x				x			
TEAL GREEN (M)				x				x
PLATINUM (M)			x				x	
MOONDUST (M)			x				x	
CARAMEL (M)		x				x		
DOVE SILVER (M)	x					NOT AVAILABLE		
SPINNAKER WHITE	x				x			
SPINNAKER WHITE		x				x		
SPINNAKER WHITE			x				x	
SPINNAKER WHITE				x				x
EBONY BLACK			x			NOT AVAILABLE		
IMPACT RED			x				x	
LIGHT CASHMERE		x				x		
TIGER YELLOW		x				x		
MEDIUM CASHMERE		x				x		
CHESTNUT (M)		x				x		

- NOTE • (M) METALLIC PAINT OPTIONAL AT EXTRA COST ON ALL SIGMA AND GL MODELS
 • VINYL ROOF OPTIONAL AT EXTRA COST ON SIGMA, GL AND SE SEDAN MODELS
 • EBONY BLACK NOT AVAILABLE ON WAGON MODELS
 • CRUSHED VELOUR CLOTH STANDARD ON SE MODELS
 • RIBBED CLOTH OPTIONAL ON GL MODELS
 • VINYL TRIM – STANDARD ON SIGMA AND GL MODELS

CHRYSLER GH SIGMA GLX PACK SEDAN

BODY COLOURS (M) = METALLIC	TRIM COLOURS (TRIDENT CLOTH)		STRIPE COLOUR DOUBLE TONE
	LIGHT BLUE	CARAMEL	
MEDIUM BLUE (M)	x		SILVER/RED
DOVE SILVER (M)	x		BLACK/RED
SPINNAKER WHITE	x		BLACK/RED
SPINNAKER WHITE		x	BLACK/RED
IMPACT RED		x	ORANGE/RED
TIGER YELLOW		x	BLACK/RED

- NOTE (M) METALLIC PAINT OPTIONAL AT EXTRA COST ON ALL SIGMA GL MODELS
 TRIDENT CLOTH SEATS STANDARD IN GLX PACK

In some cases, the printed renditions of paint, roof and trim colours may vary slightly from the actual colours.

In some cases, the printed renditions of paint, roof and trim colours may vary slightly from the actual colours.

NOTE (M) METALLIC PAINT OPTIONAL AT EXTRA COST ON ALL SIGMA GL MODELS
TRIDENT CLOTH SEATS STANDARD IN GLX PACK

BODY COLOURS (M) = METALLIC	TRIM COLOURS (TRIDENT CLOTH) DOUBLE TONE	STRIPES
MEDIUM BLUE (M)	SILVER/RED	x
DOVE SILVER (M)	BLACK/RED	x
SPINNER WHITE	BLACK/RED	x
SPINNER WHITE	BLACK/RED	x
IMPACT RED	BLACK/RED	x
TIGER YELLOW	BLACK/RED	x

CHRYSLER GH SIGMA GLX PACK SEDAN

NOTE • (M) METALLIC PAINT OPTIONAL AT EXTRA COST ON ALL SIGMA AND GL MODELS
• VINYL ROOF OPTIONAL AT EXTRA COST ON SIGMA, GL AND SE SEDAN MODELS
• EBONY BLACK NOT AVAILABLE ON WAGON MODELS
• CRUSHED VELOUR CLOTH STANDARD ON SE MODELS
• RIBBED CLOTH OPTIONAL ON GL MODELS
• VINYL TRIM - STANDARD ON SIGMA AND GL MODELS

BODY COLOURS (M) = METALLIC	TRIM COLOURS	VINYL ROOF
FROST BLUE (M)	LIGHT BLUE CARAMEL S/WOOD BEIGE TEAL	x
MEDIUM BLUE (M)	LIGHT BLUE CARAMEL S/WOOD BEIGE TEAL	x
TEAL GREEN (M)	LIGHT BLUE CARAMEL S/WOOD BEIGE TEAL	x
PLATINUM (M)	LIGHT BLUE CARAMEL S/WOOD BEIGE TEAL	x
MOONDUST (M)	LIGHT BLUE CARAMEL S/WOOD BEIGE TEAL	x
CARAMEL (M)	LIGHT BLUE CARAMEL S/WOOD BEIGE TEAL	x
DOVE SILVER (M)	LIGHT BLUE CARAMEL S/WOOD BEIGE TEAL	x
SPINNER WHITE	LIGHT BLUE CARAMEL S/WOOD BEIGE TEAL	x
SPINNER WHITE	LIGHT BLUE CARAMEL S/WOOD BEIGE TEAL	x
SPINNER WHITE	LIGHT BLUE CARAMEL S/WOOD BEIGE TEAL	x
SPINNER WHITE	LIGHT BLUE CARAMEL S/WOOD BEIGE TEAL	x
EBONY BLACK	LIGHT BLUE CARAMEL S/WOOD BEIGE TEAL	NOT AVAILABLE
IMPACT RED	LIGHT BLUE CARAMEL S/WOOD BEIGE TEAL	x
LIGHT CASHMERE	LIGHT BLUE CARAMEL S/WOOD BEIGE TEAL	x
TIGER YELLOW	LIGHT BLUE CARAMEL S/WOOD BEIGE TEAL	x
MEDIUM CASHMERE	LIGHT BLUE CARAMEL S/WOOD BEIGE TEAL	x
CHESTNUT (M)	LIGHT BLUE CARAMEL S/WOOD BEIGE TEAL	x

CHRYSLER GH SIGMA SEDAN AND WAGON COLOUR COMBINATIONS



VINYL ROOF

Sigma



**Sigma
Colour & Trim
Selector.**

EXTERIOR COLOUR



FROST BLUE (M)



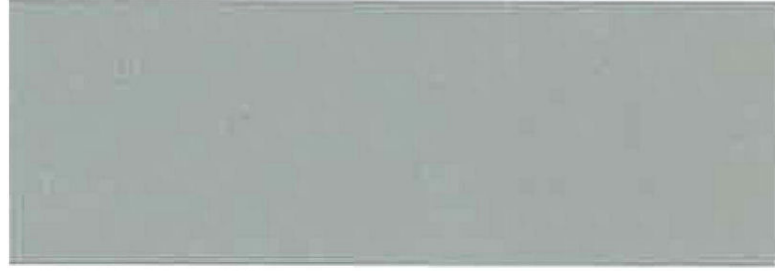
CARAMEL (M)



IMPACT RED



MEDIUM BLUE (M)



DOVE SILVER (M)



TIGER YELLOW



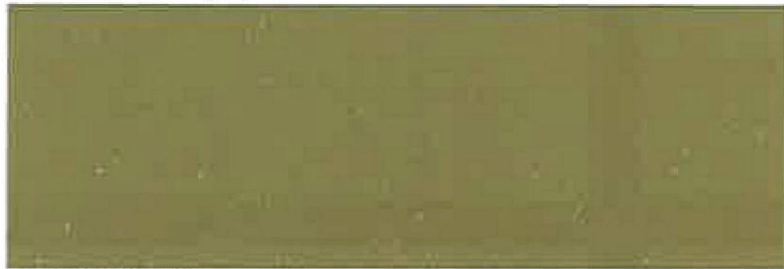
TEAL GREEN (M)



CHESTNUT (M)



MEDIUM CASHMERE



PLATINUM (M)



LIGHT CASHMERE



SPINNAKER WHITE



MOONDUST (M)



EBONY BLACK

CRUSHED VELOUR



LIGHT BLUE

RIBBED CLOTH



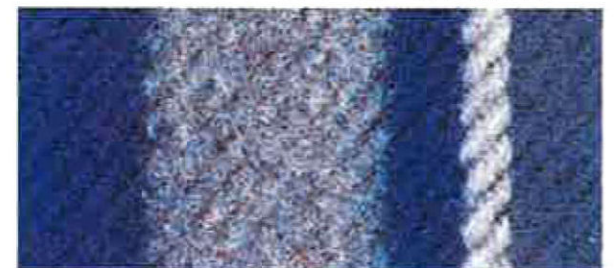
LIGHT BLUE

QUARTO VINYL



LIGHT BLUE

TRIDENT CLOTH



LIGHT BLUE



CARAMEL



CARAMEL



CARAMEL



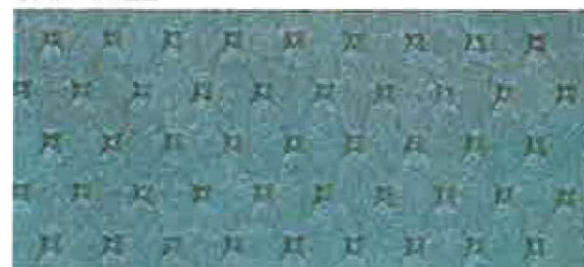
CARAMEL



TEAL



TEAL



TEAL



SANDALWOOD BEIGE



SANDALWOOD BEIGE



SANDALWOOD BEIGE

Safety research has shown that the more visible the vehicle the less likely it is to be involved in an accident. Research has also shown that in most situations, light and bright colours are more readily visible.