

2022

# IONIQ 5





# IONIQ 5: The first of its kind.



If you've been waiting for electric vehicles to take a huge step forward, the wait is over. Introducing the Hyundai IONIQ 5. It's our brand-new, ultra-fast-charging next-gen electric SUV. And the first Hyundai engineered to be exclusively all-electric.

IONIQ 5 combines what no electric vehicle has before: Ultra-modern design. Ultra-fast charging. Innovative cabin space. Exceptional performance. And a cruising range of over 300 miles on a full charge.<sup>1</sup>

With its pixel-inspired light clusters, clamshell hood and automatically extending door handles, one look lets you know IONIQ 5 is exceptional. Undeniably modern, its design signals a new electric era is beginning – and with it, an entirely new series of all-electric vehicles from Hyundai.

Free from the inherent compromises of most hybrids, IONIQ 5 optimizes the potential of its purpose-built electric platform. Not having a gas powertrain means IONIQ 5 rides on a longer wheelbase and features a flatter floor, opening up the interior to far more space.

Step inside, and you'll see how the futuristic dashboard and center stack – along with an available sliding center console and wireless charging pad – give you more freedom.

The new IONIQ 5 also uses technology in ways that give you more time. And more choices. Best-in-class ultra-fast charging from 10 to 80 percent takes just 18 minutes.<sup>2</sup> Not only does it charge faster, but a Vehicle-to-Load (V2L) two-way onboard charger acts as a power source for bigger electronics like your laptop, e-bike and TV.



<sup>1</sup>Estimated SE/SEL/Limited driving range based on a fully charged 77.4 kWh battery pack with RWD. <sup>2</sup>Claim based on comparison of specifications on manufacturer websites.





IONIQ 5 Limited in Cyber Gray

## Power at the speed of life.

IONIQ 5 puts the charge in commutes with a 225-hp Rear Wheel Drive powertrain and up to a combined 114 MPGe rating.<sup>1</sup> Or you can opt for All Wheel Drive with a 320-hp dual-motor system and 446 lb-ft of torque that launches you from 0-62 mph in just 5.2 seconds. The speed of its charging is even more impressive: Plug into an ultra-fast 800V charger for 5 minutes, and you'll add up to 68 miles to your driving range.<sup>2</sup>

IONIQ 5 offers four driving modes (ECO, Comfort, Sport or Snow) to suit your preference or road conditions. An available Premium Heads-up Display with Augmented Reality functions lets you track driving vitals and navigation at a glance. Time to power up? It's on us – IONIQ 5 owners get two years of unlimited 30-minute charging sessions using Electrify America's national network of DC fast-charging stations.<sup>3</sup> And here's something else to help you go the distance: The lithium-ion battery system is guaranteed for 10 years or 100,000 miles.<sup>4</sup>

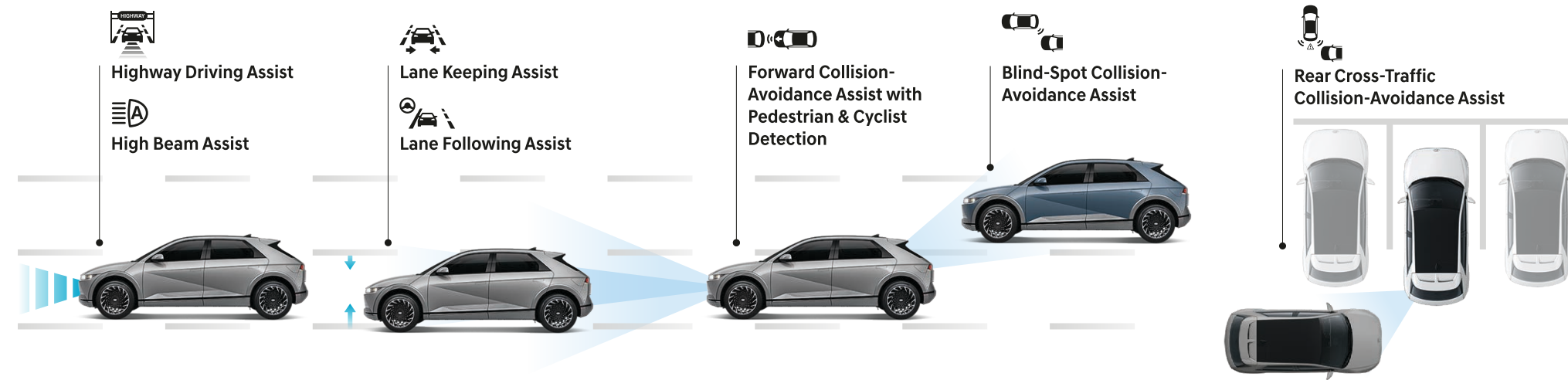
IONIQ 5 is flush with technologies that help make driving safer and less stressful. One example: Forward Collision-Avoidance Assist.<sup>5</sup> A fusion of radar and camera sensors monitors for pedestrians, cyclists and vehicles that are slowing or stopped in front – as well as vehicles that are oncoming, cross-traffic at intersections and vehicles changing lanes beside you. Automatic braking and steering assist are applied as warranted to help avoid a collision.



### Mobile power strip.

IONIQ 5 is available with bi-directional Vehicle-to-Load (V2L) power outlets. Use your vehicle's battery to recharge power tools, e-bikes or items for your tailgating or camping trip. An available external V2L accessory allows IONIQ 5 to provide power even when the vehicle is off.

### Hyundai SmartSense Technologies



Premium Heads-up Display with AR functions



Blind-Spot View Monitor

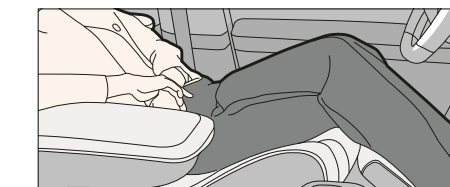
<sup>1</sup>Ratings for trim levels equipped with a 77.4 kWh battery. MPGe is the EPA-equivalent measure of gasoline fuel efficiency for electric mode operation. Use for comparison only. Mileage may vary with driving conditions, driving habits, the vehicle's condition, the age/condition of the lithium-ion polymer battery and other factors. <sup>2</sup>Charging rate and time estimate varies based on a number of factors including battery charge level, output of the charging unit, vehicle and battery settings and outside temperature. <sup>3</sup>Available on new 2022 IONIQ 5 electric vehicles purchased from an authorized U.S.-based (excluding Alaska) Hyundai dealer on or before December 31, 2023. Two years of unlimited 30-minute complimentary charging sessions from date of purchase at Electrify America charging stations are non-transferable. Not available for commercial use such as ridesharing. Requires Electrify America account, app, acceptance of Terms of Use and enrollment in Hyundai Premium Charging plan. After user-initiated charge session stops or vehicle reaches full charge or charging otherwise stops (and 10-min grace period), Idle Fees will apply and user is responsible. In the event of suspected fraud or abuse or other unforeseen events, Hyundai Motor America may discontinue or modify offer at its sole discretion. <sup>4</sup>Limited Battery Warranty covers defects in the factory workmanship or materials of the lithium polymer battery for 10 years from the date of original retail delivery or date of first use or 100,000 miles, whichever occurs first. Coverage does not apply to lease and commercial vehicles or vehicles serviced or registered outside of the U.S. See your Hyundai dealer or your Owner's Handbook for details and limitations. <sup>5</sup>Forward Collision-Avoidance Assist with Pedestrian and Cyclist Detection (FCA) helps detect pedestrians and cyclists, but not in all conditions. FCA is designed to assist drivers to avoid, or reduce the severity of, collisions with cars that have slowed or stopped in front of them. The system is not designed to detect certain stationary objects such as trees or poles, and may not detect all vehicles and pedestrians under certain road, weather and vehicle conditions. It is a supplemental assist and does not replace the need for extreme care and attention by the driver. FCA may not stop the vehicle completely and will not avoid all collisions. Driver is responsible for maintaining control of the vehicle and should not wait for the system's alerts before braking as there may not be sufficient time to brake safely. See Owner's Manual for details and limitations.

### Start



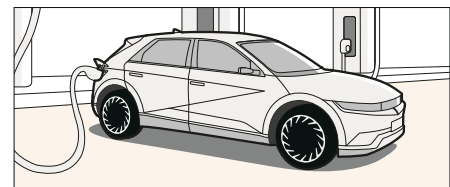
Getting driving directions to charging stations is easy. IONIQ 5 is equipped to navigate you to the nearest location.

### Relax



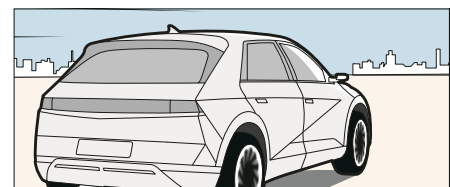
Engage the available Relaxation Function of the power driver seat, and you'll be able to recline and recharge while your IONIQ 5 does, too.

### Charge



DC Fast Charging comes standard. With a 350 kW charger, IONIQ 5 can charge from 10 to 80 percent in just 18 minutes.<sup>2</sup>

### Finish



Are you ready to roll? Your IONIQ 5 RWD can deliver a cruising range of over 300 miles on a full charge.<sup>1</sup>





Claim based on comparison of specifications on manufacturer websites. <sup>2</sup> Qi wireless charging function is based on smartphone compatibility and/or specific accessory cases.

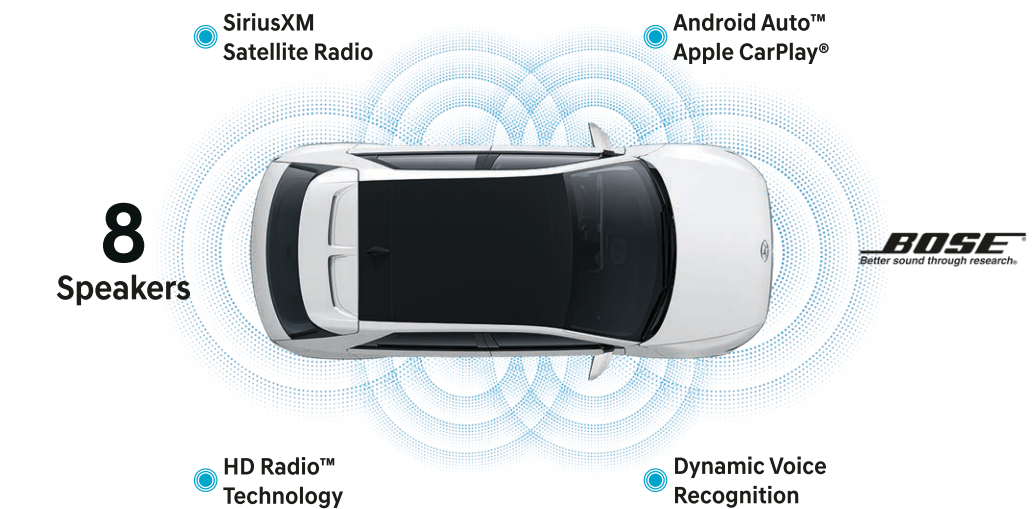
IONIQ 5 Limited in Light Gray Leatherette with Gray Trim

## Your mobile living room.

When Hyundai designers saw how much interior space IONIQ 5's flat floor creates, they came up with a bold vision. Why not think of this as a smart living room? After all, IONIQ 5 has more comfort and more room to spread out than any vehicle in its class.<sup>1</sup> Along with more space for you and your passengers, there's more cargo room. And more real estate on the dash for a pair of 12.3" high-definition display screens – one for the instrument cluster, the other for navigation and infotainment.

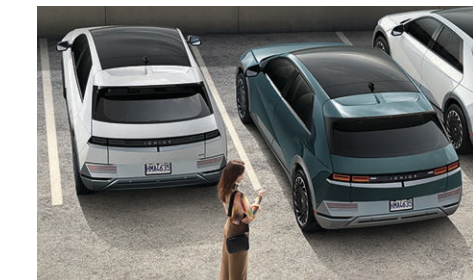
Beyond space, our designers looked for ways to make you incredibly comfortable. The driver seat is available with a reclining Relaxation Function that supports your legs while you rest. The front seat design is slimmer to allow more space for 2nd-row passengers. Those 2nd-row seats also slide and feature reclining seatbacks – or fold down to dramatically increase the cargo space. Dual USB charging ports and an available Vehicle-to-Load (V2L) two-way charger beneath the 2nd-row seats ensure power is available throughout the cabin for your digital devices.

Between the front seats, IONIQ 5's center console is like a floating island with an available sliding feature that moves back and forth to create more freedom of access. The center console also offers ample surface area for your laptop, contains a wireless charging tray<sup>2</sup> and includes a large storage compartment as well. So sit back...relax...and look up through the expansive glass Vision Roof. In your IONIQ 5, the future has arrived.

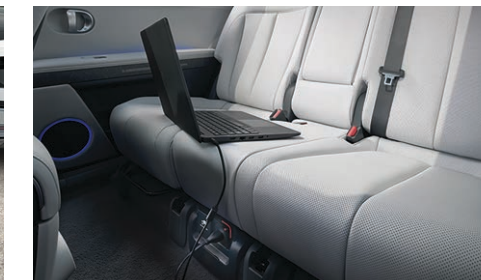


### Stay plugged in.

Apple CarPlay® and Android Auto™ sync your smartphone with your IONIQ 5's huge 12.3" touchscreen display for easy access to contact lists, texts, calls, maps and navigation, your music library and more. Ensuring the smarts of your smartphone travel with you wherever you go.



Remote Smart Parking Assist



Vehicle-to-Load (V2L) two-way onboard charger



Vision Roof



60/40 split-folding 2nd-row seats w/ recline & slide





# Turns out the key to happiness isn't actually a key. It's an app.

What Hyundai offers its owners goes beyond our award-winning vehicles. It includes BlueLink,<sup>®</sup> a range of innovative technologies that enable remarkable connectivity between you and your IONIQ 5.<sup>1</sup>

With the MyHyundai app, you can remotely start your IONIQ 5 and adjust climate controls from your office or kitchen using your smartphone, Amazon Echo<sup>®</sup> or Google Home<sup>™</sup> virtual assistant.<sup>2</sup> You can also remotely activate front seat heating or available ventilation, and check to see if you've left a window open by consulting your smartphone.<sup>3</sup>

Download the available Hyundai Digital Key to your compatible Android<sup>™</sup> smartphone, and you can use it to unlock the front doors and turn on the vehicle.<sup>4</sup> You can also assign digital keys to multiple drivers, who can instantly retrieve their personalized radio presets, instrument cluster display preferences and driver seat settings.<sup>3</sup>

Every IONIQ 5 comes standard with Apple CarPlay<sup>®</sup> and Android Auto,<sup>™</sup> and you can now connect two phones to the audio system simultaneously via Bluetooth streaming.<sup>5</sup> Good to know you can easily keep your digital devices powered up, too. A wireless charging pad is available, and three front USB charge ports are standard.



## Automatic Emergency Assistance

BlueLink Connected Care offers 24/7 SOS Emergency Assistance as well as Automatic Collision Notification that calls for help if you're in an accident where your vehicle's airbags deploy.<sup>6</sup>



## Remote Vehicle Charging

You can control your IONIQ 5's charging remotely while it's plugged into an external power source, and schedule its charging at a specific time to take advantage of low-demand hours and rates.<sup>7</sup>



## Destination Send-to-Car

Use your smartphone to find a restaurant or points of interest, then send the destination to your IONIQ 5's navigation system for driving directions before you slip behind the wheel.<sup>8</sup>



## Remote Vehicle Controls

Use your smartphone, home assistant or wearable device to remotely start your IONIQ 5, unlock your doors, set your vehicle's cabin temperature and more.



## Driver Profile Management

Save your radio presets, driver seat settings<sup>9</sup> and navigation searches to your BlueLink account, and you can remotely update and push them to your IONIQ 5 before driving.



## Remote Vehicle Status

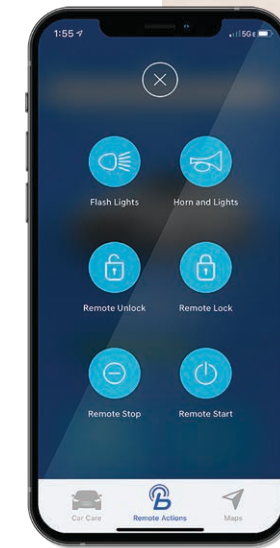
Wondering how much charge your battery has? If your vehicle's liftgate is closed or the doors are unlocked? Your MyHyundai app knows the answers to these questions and more.



Hyundai Digital Key



Wireless device charging



Amazon Echo integration



<sup>1</sup>The 2022 IONIQ 5 includes 3 years of the BlueLink Connected Care, Remote and Guidance (factory-equipped navigation required) packages. All trials require an active BlueLink subscription agreement subject to the Connected Services Terms and Conditions. Three-year term starts from the new vehicle date-of-first-use, is available for new vehicle purchases and leases, and is transferable to subsequent owners subject to the Terms and Conditions. Only use BlueLink and corresponding devices when safe to do so. Cellular and GPS coverage is required. Features, specifications and fees are subject to change. For more on details and limitations, visit HyundaiUSA.com or your authorized Hyundai dealer. <sup>2</sup> Requires active BlueLink subscription with Remote package. Amazon, Alexa and all related logos and motion marks are trademarks of Amazon.com, Inc. or its affiliates. Google Assistant and Google Home are trademarks of Google Inc. <sup>3</sup> Requires active BlueLink subscription with Remote package. <sup>4</sup> The Hyundai Near Field Communication Digital Key requires a compatible Android smartphone and appropriately equipped 2022 Hyundai IONIQ 5. Not all Android devices are compatible. Vehicle must be equipped with a smart key with push button start, wireless device charging and Audio Video Navigation System 5.0 (or newer) or Display Audio 2.0. Lock/unlock functionality works on the front doors only. See your Owner's Manual or visit your local Hyundai dealer for details. <sup>5</sup> Apple CarPlay<sup>®</sup> is a registered trademark of Apple Inc. Android Auto<sup>™</sup> is compatible with Android<sup>™</sup> phones running Android 5.0 or higher. Android Auto may not be available on all devices and is not available in all countries or regions. Additional apps may be required. Android and Android Auto are trademarks of Google LLC. <sup>6</sup> BlueLink agents will contact existing emergency service providers. <sup>7</sup> Requires BlueLink Remote package. For remote charging, vehicle needs to be plugged into an electrical socket. See Owner's Manual for details and limitations. <sup>8</sup> Requires active BlueLink subscription with Guidance package and vehicle equipped with navigation system. <sup>9</sup> Requires vehicle equipped with driver seat Integrated Memory System.



## IONIQ 5 SE

Single-Motor Rear Wheel Drive  
Dual-Motor All Wheel Drive

**hp** RWD AWD  
**225 / 320**

**lb-ft** RWD AWD  
**258 / 446**



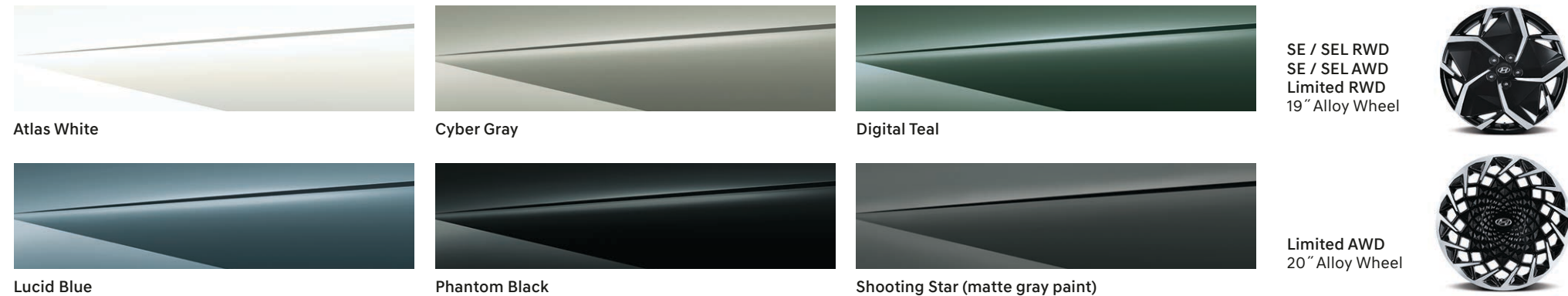
Popular Features
Parametric pixel LED headlights and taillights
Flush door handles with automatic extend/retract
Blind-Spot Collision-Avoidance Assist
Rear Cross-Traffic Collision-Avoidance Assist
Bluelink® Connected Car System
12.3" digital instrument cluster display
12.3" touchscreen navigation display

\* Standard Range RWD with 58 kWh battery & 168 hp motor (late availability)

## Interior Colors



## Exterior Colors



## IONIQ 5 SEL

Single-Motor Rear Wheel Drive  
Dual-Motor All Wheel Drive

**hp** RWD AWD  
**225 / 320**

**lb-ft** RWD AWD  
**258 / 446**



Popular Features
Parking Distance Warning – Forward & Reverse
Leatherette seating surfaces and soft-touch door trim
Heated steering wheel and ambient LED interior lighting
Hands-free smart liftgate with auto open
Highway Driving Assist II
Auto-dimming rearview mirror with HomeLink®
Wireless device charging

## IONIQ 5 Limited

Single-Motor Rear Wheel Drive  
Dual-Motor All Wheel Drive

**hp** RWD AWD  
**225 / 320**

**lb-ft** RWD AWD  
**258 / 446**



Popular Features
Blind-Spot View Monitor and Surround View Monitor
Remote Smart Parking Assist
Driver seat with Relaxation Function and Integrated Memory System
Hyundai Digital Key
Premium Heads-up Display with Augmented Reality functions
2nd-row Vehicle-to-Load (V2L) Charger
Vision Roof

## Wheels

SE / SEL RWD  
SE / SEL AWD  
Limited RWD  
19" Alloy Wheel



Limited AWD  
20" Alloy Wheel



## IONIQ 5

Power & Handling	SE	SEL	Ltd
RWD 125 kW (168 hp) / 258 lb-ft permanent-magnet synchronous motor (late availability)	o	–	–
58 kWh lithium-ion polymer battery system (late availability)	o	–	–
RWD 168 kW (225 hp) / 258 lb-ft permanent-magnet synchronous motor	•	•	•
AWD 74 kW + 165 kW (320 hp) / 446 lb-ft permanent-magnet synchronous dual motors	o	o	o
77.4 kWh lithium-ion polymer battery system	•	•	•
Ultra-fast charger (up to 800V / 350kW)	•	•	•
Battery heating system (standard on AWD)	o	o	o
Rack-mounted Motor-Driven Power Steering	•	•	•
Column-mounted Shift-by-Wire drive selector	•	•	•
Regenerative brake level control paddles	•	•	•
Multi-link rear suspension	•	•	•
1,650-lb towing capacity (77.4 kWh battery only)	•	•	•

Exterior Features	SE	SEL	Ltd
Active grille shutters	•	•	•
Automatic on/off headlights with High Beam Assist	•	•	•
Parametric pixel LED headlights and LED taillights	•	•	•
LED Daytime Running Lights	•	•	•
Heated side mirrors with LED turn signal indicators	•	•	•
Power-folding side mirrors	–	•	•
Flush door handles with automatic extend/retract	•	•	•
Premium Gloss Black exterior accents	–	–	•
Rear roof spoiler with center LED brake light	•	•	•
Vision Roof	–	–	•
Privacy rear glass	•	•	•
Front trunk	•	•	•
Hands-free smart liftgate with auto open	–	•	•
Rear View Monitor with Parking Guidance	•	•	•
Rain-sensing windshield wipers	–	–	•

Interior Features	SE	SEL	Ltd
Proximity Key entry with push button start	•	•	•
12.3" digital instrument cluster display	•	•	•
Leather-wrapped tilt-and-telescopic steering wheel with audio, phone and cruise controls	•	•	•
Dual automatic temperature control with Driver Only mode	•	•	•
2nd-row air conditioning vents	–	•	•
Cloth   Leatherette seating surfaces	• –	– •	– •

Interior Features	SE	SEL	Ltd
8-way power driver seat and heated front seats	•	•	•
Driver seat with Relaxation Function and Integrated Memory System	–	–	•
8-way power front passenger seat	–	–	•
Ventilated front seats	–	–	•
Rear side-window sunshades	–	–	•
Heated steering wheel and ambient LED interior lighting	–	•	•
Premium door sill plates and sliding center console	–	–	•
60/40 split-folding 2nd-row seats with recline & slide and center armrest	•	•	•
2nd-row Vehicle-to-Load (V2L) charger	–	–	•
Premium Heads-up Display w/ Augmented Reality functions	–	–	•
Auto-dimming rearview mirror with HomeLink®	–	•	•
Smart Cruise Control with Stop & Go	•	•	•
Remote Smart Parking Assist	–	–	•
Highway Driving Assist (HDA I   HDA II)	• –	– •	– •

Advanced Safety	SE	SEL	Ltd
Forward Collision-Avoidance Assist with Pedestrian, Cyclist and Junction-Turning Detection	•	•	•
Lane Keeping Assist and Lane Following Assist	•	•	•
Blind-Spot Collision-Avoidance Assist	•	•	•
Rear Cross-Traffic Collision-Avoidance Assist	•	•	•
Driver Attention Warning	•	•	•
Blind-Spot View Monitor and Surround View Monitor	–	–	•
Safe Exit Assist and Rear Occupant Alert	•	•	•
Parking Distance Warning – Reverse	•	•	•
Parking Distance Warning – Forward & Reverse	–	•	•
Parking Collision-Avoidance Assist – Reverse	–	–	•

Audio & Connected Car Technology	SE	SEL	Ltd
12.3" high-resolution color touchscreen navigation system	•	•	•
Bose® 8-speaker premium audio system	–	–	•
SiriusXM Satellite Radio and HD Radio™	•	•	•
Apple CarPlay® and Android Auto™	•	•	•
Wireless device charging	–	•	•
Hyundai Digital Key	–	–	•
Bluelink® Connected Car System (3 years complimentary) with Remote Charge Access	•	•	•
Dynamic Voice Recognition	•	•	•
USB outlets: Front (1 data/charge + 2 charge), Rear (2 charge)	•	•	•

• Standard o Optional – Not Available Ltd = Limited Trim

## HTRAC All Wheel Drive Option

AWD dual-motor electric powertrain
HTRAC liftgate badge
20" alloy wheels (Limited trim only)
Battery heating system
Heat pump (heater)

## Exterior Dimensions IONIQ 5

Wheelbase	118.1 in
Overall Length	182.5 in
Overall Width	74.4 in
Overall Height	63.0 in

## Interior Dimensions IONIQ 5

Headroom – front (with Vision Roof)	39.8 (39.1) in
Headroom – 2nd row (with Vision Roof)	38.7 (37.5) in
Legroom – front	41.7 in
Legroom – 2nd row	39.4 in
Shoulder Room – front	57.7 in
Shoulder Room – 2nd row	57.7 in
Passenger Volume	106.5 cu ft
Cargo Capacity – 2nd row seats up	27.2 cu ft
Cargo Capacity – 2nd row seats down	59.3 cu ft
Total Interior Volume	133.7 cu ft

## IONIQ 5 EPA Estimates (City/Highway/Combined)

**127/94/110 MPGe** RWD  
SE Standard Range  
(late availability)

**220** Maximum Driving Range (miles)

**132/98/114 MPGe** RWD  
SE/SEL/Limited

**303** Maximum Driving Range (miles)

**110/87/98 MPGe** AWD  
SE/SEL/Limited

**256** Maximum Driving Range (miles)

MPGe is the EPA-equivalent measure of gasoline fuel efficiency for electric mode operation. Use for comparison only. Mileage may vary with driving conditions, driving habits, the vehicle's condition, the age/condition of the lithium-ion polymer battery, and other factors.



Hyundai Hope On Wheels®

Helping Kids Fight Cancer Since 1998



## Hope makes every Hyundai better.

Each time we sell a new Hyundai, a portion goes to Hyundai Hope On Wheels® to help find a cure for childhood cancer. Over the last 23 years, Hyundai Hope On Wheels has donated more than \$185 million. Hope is our greatest feature. And it comes standard on every Hyundai. For more information, please visit [HyundaiHopeOnWheels.org](http://HyundaiHopeOnWheels.org).



## America's Best Warranty

**POWERTRAIN LIMITED WARRANTY**

**10** YEARS  
100,000 MILES

**NEW VEHICLE LIMITED WARRANTY**

**5** YEARS  
60,000 MILES

**ANTI-PERFORATION WARRANTY**

**7** YEARS  
UNLIMITED MILES

**24/7 ROADSIDE ASSISTANCE**

**5** YEARS  
UNLIMITED MILES

**HYBRID/ELECTRIC SYSTEM COMPONENTS**

**10** YEARS  
100,000 MILES



**Hyundai Complimentary Maintenance**

Complimentary maintenance includes Hyundai-approved oil and oil filter change (except for electric vehicles and fuel cell electric vehicles) plus tire rotation at normal factory-scheduled maintenance intervals for 3 years or 36,000 miles, whichever comes first. More frequent maintenance due to severe driving or conditions is excluded. Offer valid only for new 2020-2022 Hyundai models purchased or leased on or after February 1, 2020. See your Hyundai dealer for further details and limitations.



**Owner Assurance**

Our commitment to Hyundai owners does not end with the transfer of keys. Wherever the road takes you, we've got your back with Owner Assurance, an umbrella of services and benefits that includes America's Best Warranty, 24/7 Roadside Assistance, innovative safety and car care features...and more.

America's Best Warranty covers specific hybrid/electric vehicle-related components including high voltage battery, battery management system and traction motor. See Owner's Handbook & Warranty Information Booklet for details. See dealer for LIMITED WARRANTY details. Fuel economy estimated by EPA for comparison only. Mileage may vary. While the information contained in this brochure was correct at the time of printing, specifications and equipment can change. Feature comparisons based on competitor information available at the time of printing. No warranty or guarantee is being extended in this brochure, and Hyundai reserves the right to change product specifications and equipment at any time without incurring obligations. Some vehicles are shown with optional equipment. Specifications apply to U.S. vehicles only. Please contact your Hyundai dealer for current vehicle specifications. As part of Hyundai's commitment to a responsible environment, this brochure was printed using paper certified by the Forest Stewardship Council®. FSC® certification helps ensure that the highest social and environmental standards are met in the making of the paper we use, contributing to conservation, responsible management and community-level benefits for people near the forests.

