

the startling new Pontiac Strato Star

your cars of tomorrow are being designed at **Pontiac** today!

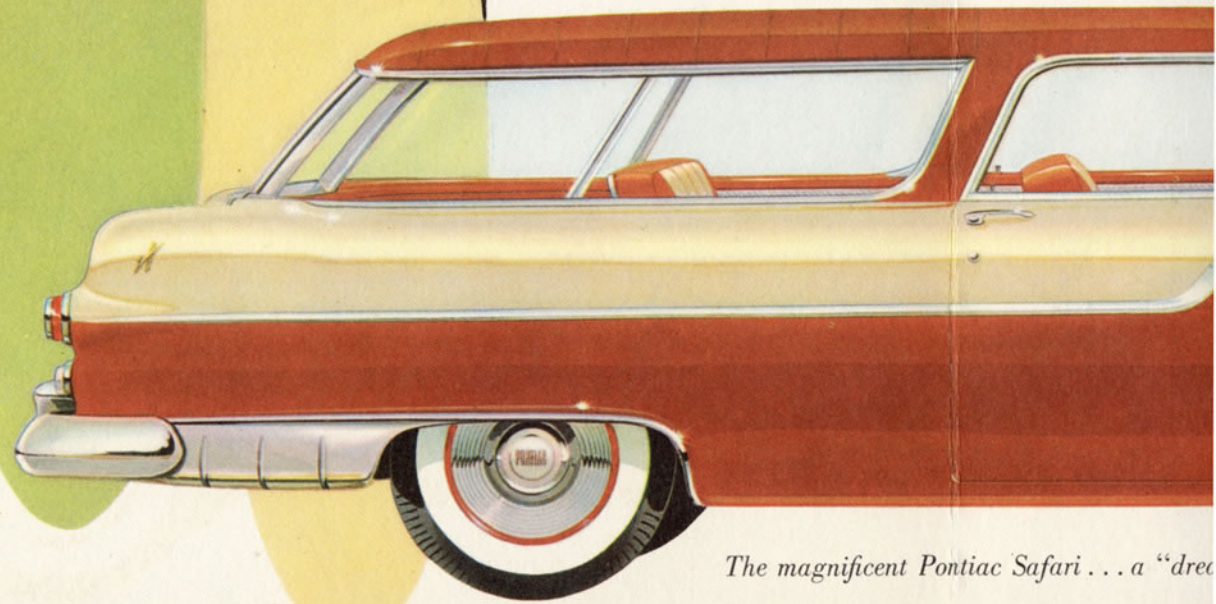
Pontiac

Strato Star

the big hit of the show!

The most daring new design ever displayed . . . the truly astounding Pontiac Strato Star. Barely over four feet high (53 inches to be exact), Pontiac's revolutionary new "dream car" boasts virtual obstruction-free vision through the utilization of two strong cantilever pillars which flow from the rear deck and join the windshield header bar. Built with conventional seats, the Strato Star easily and comfortably seats six passengers.

Powered by Pontiac's big 250-h.p. Strato-Streak V-8, this sleek "car of the future" claims an over-all length of 202.5 inches while maintaining a comfort-assuring 120-inch wheelbase. Hinged 6-inch panels above the doors open and close automatically to permit easy entrance and exit.



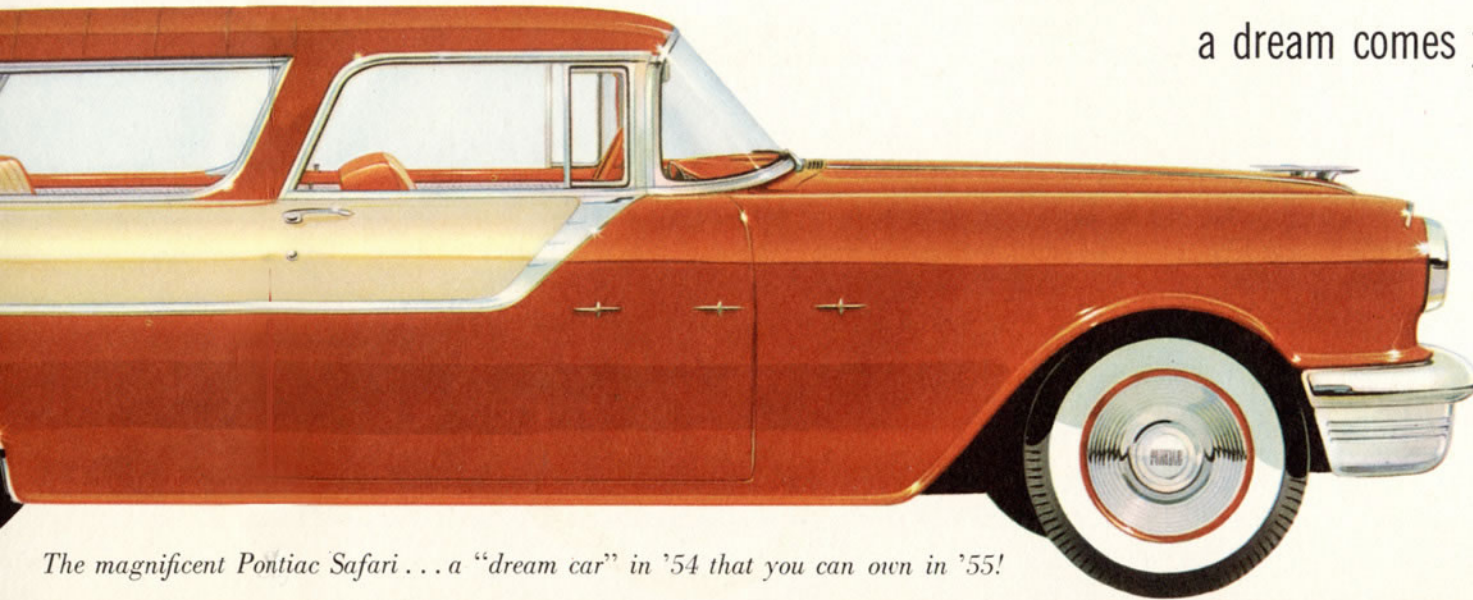
another brilliant cre

The magnificent Pontiac Safari . . . a "drea

another brilliant creation from

PONTIAC

a dream comes true in the 1955 Pontiac **Safari**



This is *certainly* Pontiac's year to star . . . for from the drawing boards that captured the spirit of tomorrow comes another sensational 1955 Pontiac . . . the breath-taking SAFARI!

Completely at home in any setting . . . be it town or country, the Safari offers the most luxurious motoring you've ever known. Versatility is an outstanding feature of the Safari for, in a mere moment, this handsome family model may be converted to a functional carrier by quickly folding the rear seat.

The magnificent Pontiac Safari . . . a "dream car" in '54 that you can own in '55!

Pontiac

Strato Star

the big hit of the show!

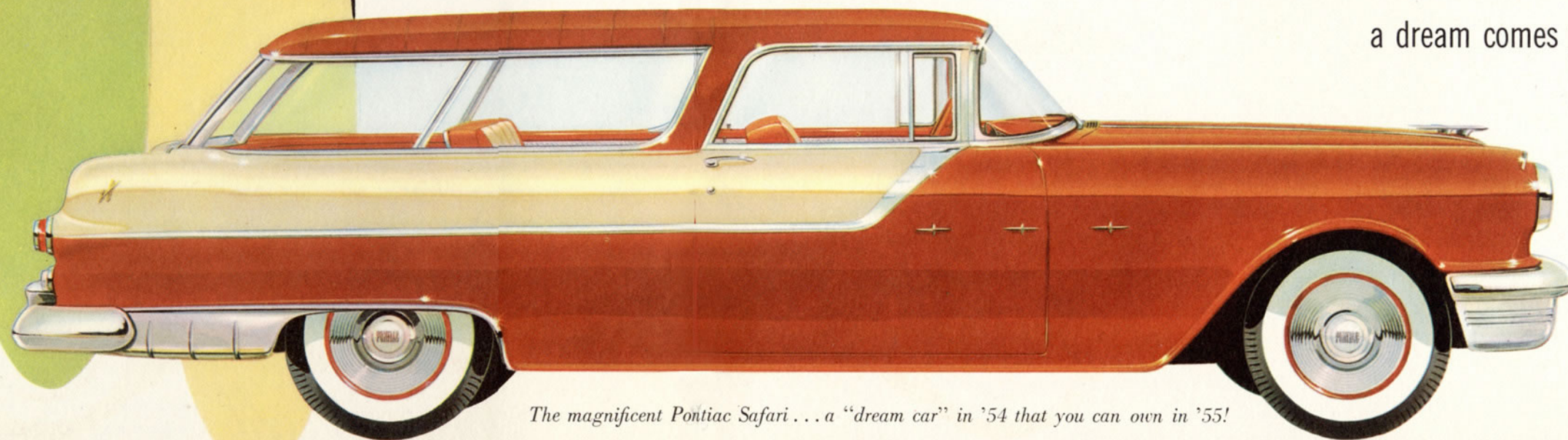
The most daring new design ever displayed . . . the truly astounding Pontiac Strato Star. Barely over four feet high (53 inches to be exact), Pontiac's revolutionary new "dream car" boasts virtual obstruction-free vision through the utilization of two strong cantilever pillars which flow from the rear deck and join the windshield header bar. Built with conventional seats, the Strato Star easily and comfortably seats six passengers.

Powered by Pontiac's big 250-h.p. Strato-Streak V-8, this sleek "car of the future" claims an over-all length of 202.5 inches while maintaining a comfort-assuring 120-inch wheelbase. Hinged 6-inch panels above the doors open and close automatically to permit easy entrance and exit.

another brilliant creation from

PONTIAC

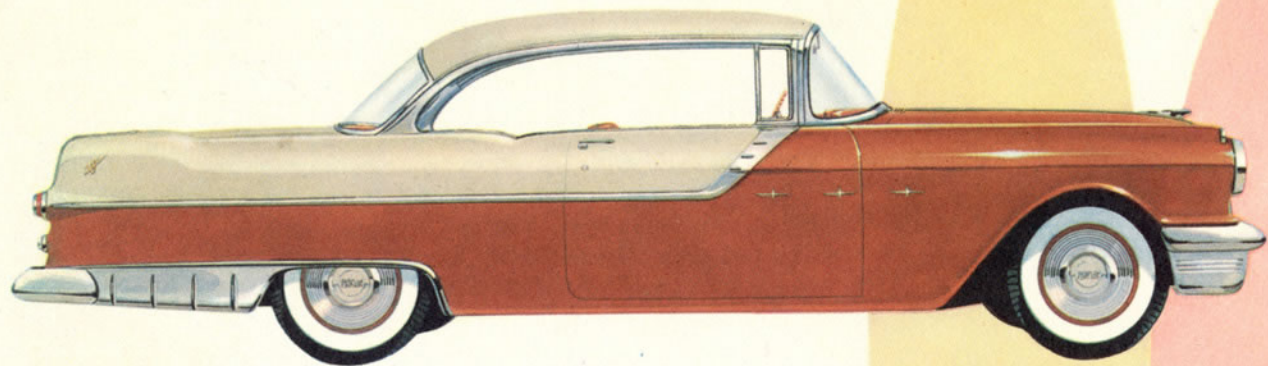
a dream comes true in the 1955 Pontiac **Safari**



This is *certainly* Pontiac's year to star . . . for from the drawing boards that captured the spirit of tomorrow comes another sensational 1955 Pontiac . . . the breath-taking SAFARI!

Completely at home in any setting . . . be it town or country, the Safari offers the most luxurious motoring you've ever known. Versatility is an outstanding feature of the Safari for, in a mere moment, this handsome family model may be converted to a functional carrier by quickly folding the rear seat.

The magnificent Pontiac Safari . . . a "dream car" in '54 that you can own in '55!



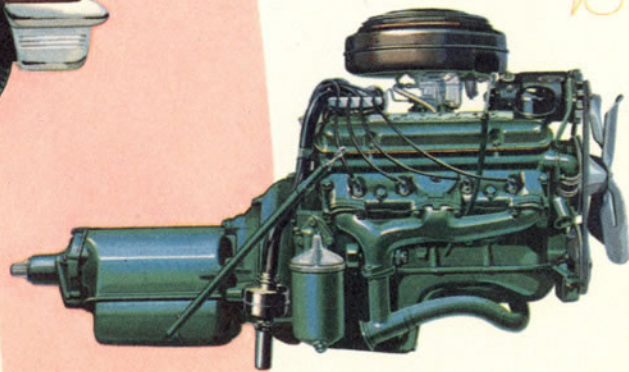
style that sets the pace . . .

Pontiac Star Chief Catalina

The flare of youth, the spirit and gaiety of today's motorama are captured in America's most modern automobile . . . the Pontiac Star Chief Catalina. From its clean, uncluttered styling to the truly magnificent interior, no other car can claim such beauty and luxury at such a low price.

. . . power to spare!

Strato-Streak



Unparalleled motoring performance, power and dependability are yours at just the touch of your toe when you're guiding the great new Pontiac Strato-Streak V-8. In all 1955 Pontiacs you will find eager agility and get-up-and-go, for here in the Strato-Streak V-8 is a *true* 180 horsepower . . . all the power you'll ever need.