

# VALLIANT HARDTOP

THE RIGHT  
MOVE  
FOR ALL  
THE  
RIGHT  
REASONS.

STIRLING  
MOSS  
ON  
PERFORMANCE  
AND  
THE  
GOOD  
LIFE.

COME  
ON UP  
AND  
LIVE  
A  
LITTLE.

DO  
IT  
NOW.

MORE  
TASTE THAN  
MONEY.



# VALLIANT

THE RIGHT  
MOVE  
FOR ALL  
THE  
RIGHT  
REASONS.

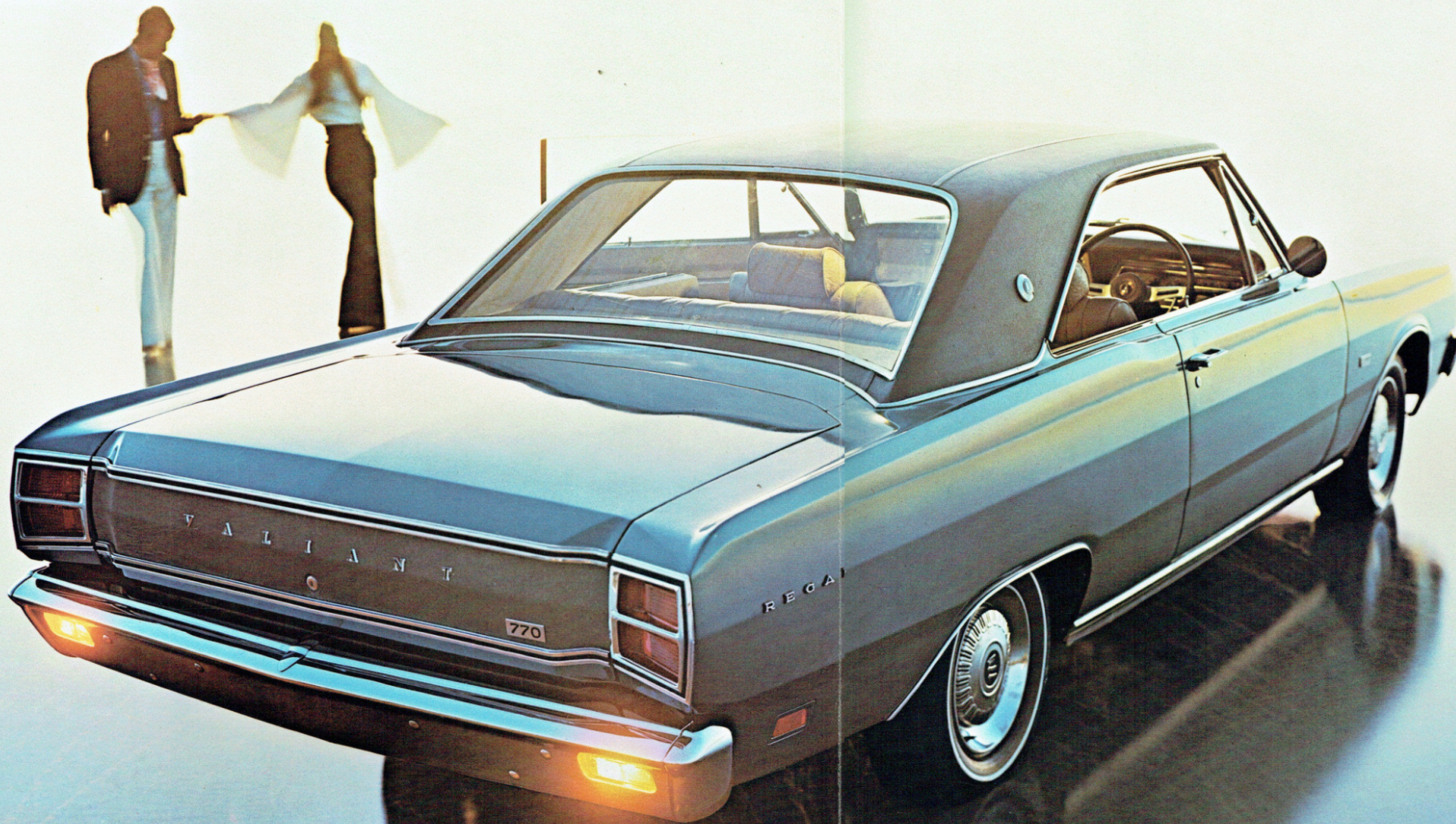
STIRLING  
MOSS  
ON  
PERFORMANCE  
AND  
THE  
GOOD  
LIFE.

COME  
ON UP  
AND  
LIVE  
A  
LITTLE.

DO  
IT  
NOW.

MORE  
TASTE THAN  
MONEY.





**REGAL 770 HARDTOP.  
THE RIGHT MOVE  
--FOR ALL  
THE RIGHT  
REASONS.**

**A**h, life on the treadmill. You bolt down your breakfast, shoot through to work. Cobwebs still in your eyes. You skip lunch, crank out that job for the boss, drag home late to yesterday's left-overs. Isn't it grand? Vital? Stimulating? But then—there's no other way. Not when you want the best for you and your family. So when do you start enjoying things—like a fine automobile? Start now. With a Regal 770 Hardtop. The right move. For all the right reasons. One look tells you what Chrysler stylists have accomplished. Tasteful good looks. Long, low and substantial, on a long 111" wheelbase. And they managed to leave off the post behind the front doors. So there's no interruption of the smooth, flowing lines. Slip behind the wheel, into a reclining bucket seat finished in Buffalo

Grain vinyl—complete with headrest. (Remember? You're moving up.) Between the buckets—a centre console. For the standard 3-speed Torqueflite automatic transmission. Look around you. The deep-recessed dash is fully padded, with an integral tachometer. Your feet rest on high-quality carpet. And that brake pedal is linked to power-assisted front disc brakes. Ventilated to stay cool, with new floating-head caliper. Take a test run. With our revolutionary Hemi Six 2-barrel or optional 318 cu. in. V-8. With the Hemi, you'll get up to 20% more economy, plus the performance of a V-8. Regal 770 Hardtop. Youthful, yes. A bit of an indulgence, yes. But not an extravagance. We can't get you off life's treadmill. But we can sure help you enjoy the ride.



**REGAL HARDTOP.  
THE RIGHT MOVE  
HAS NEVER  
BEEN EASIER.**

**Y**ou've heard it said a thousand times: "Too soon we grow old, too late we grow smart." Why not begin the good life now? With Regal Hardtop. The right move, with plenty of right reasons to back it up. The move to Regal Hardtop gains you the most advanced 6-cylinder engine in a generation. The new Hemi Six—designed in Australia for Australian conditions. The term "Hemi" means "hemispherical combustion chamber." Which—but hold on. You'll get all the details later. Just remember that Hemi will take you up to 20% further between petrol stops, and delivers the performance of a V-8. All for the price of a Six. Remember, too, that we're concerned with total performance. Regal

Hardtop's brakes are the largest in its class. And the clutch for the 3-speed column shift transmission requires less pedal effort. A note on the advantages of Regal's long 111" wheelbase. First, the styling is stretched out, for a graceful, handsome profile. Then, you get a smoother ride. Especially with torsion bar suspension to soak up road impact. Some more things that make the chassis so right. Unibody construction, with "skin" welded to supporting members for strength and durability. A cocoon of insulation that surrounds the passenger compartment. That's the nut-and-bolt side of Regal Hardtop. Now take a look at some of the people comforts.

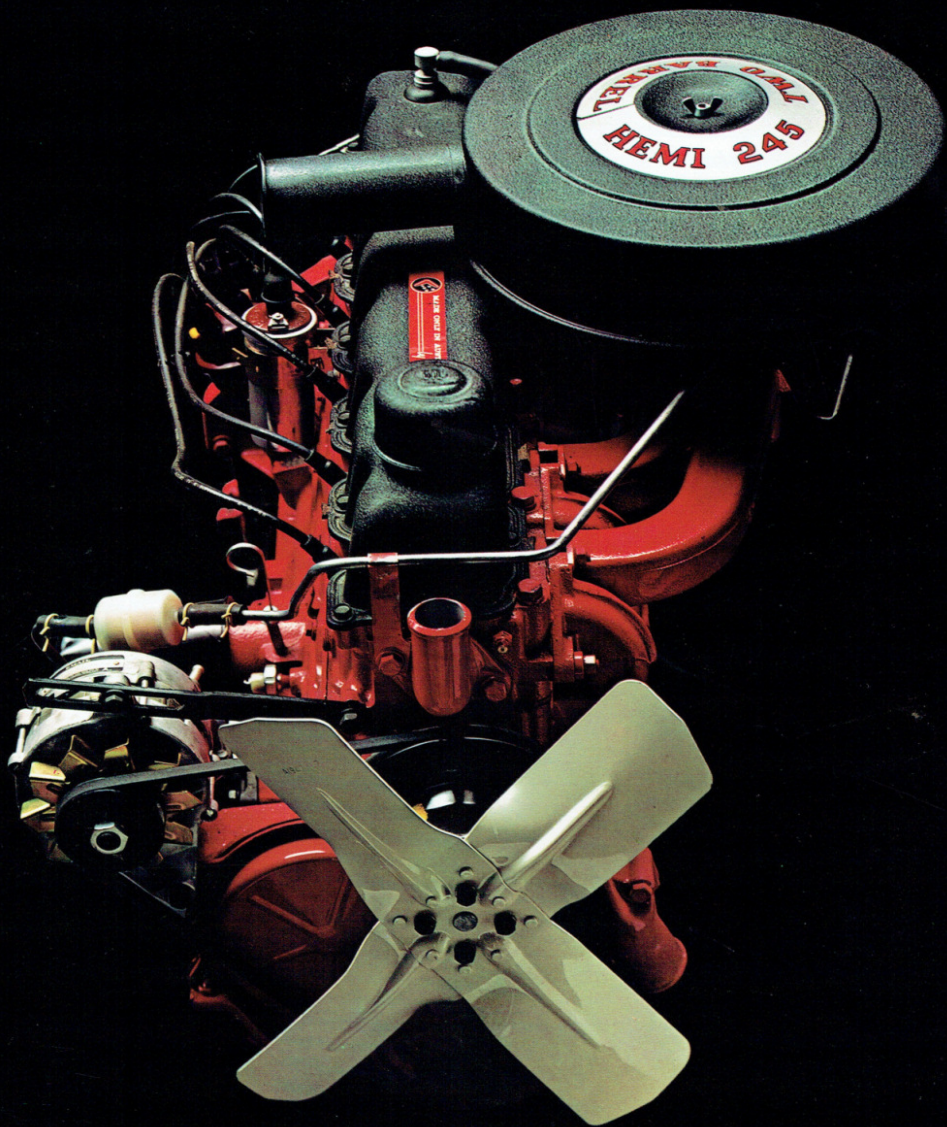


**MORE  
RIGHT REASONS:  
FROM LUXURY  
TO SAFETY.**

**W**hen you make your move, you'll naturally expect more comfort, quiet and safety. So be it. Witness the fact that we've developed new softer vinyl bench seats. A joy to ride in, and as easy to clean as the nearest damp rag. Or, if you really want to say good-bye to ho-hum, hum-drum interiors, order the optional vinyl or cloth-and-vinyl reclining buckets. They have headrests and a fold-down centre cushion armrest. And they recline, for the ultimate in long-trip comfort. More right reasons, all adding up to a single conclusion: Regal Hardtop is the right move. Wall-to-wall carpet. Complete sound insulation. Padded dash and 21

other standard safety features—including a 360° impact-absorbing steering column. Courtesy lights at both doors. A vanity mirror for the woman in your life. And appearance items that are as practical as they are pretty: New square headlights that throw a solid probe of light. A new aluminium grille that can never rust, or shatter like plastic. To make your move even righter, order power steering. Column-mounted automatic shift. Air conditioning. The lot. Other options are spelled out at the back of the catalogue. When you move, you want the best. It's only right.





**HEMI SIX  
ADVANCED POWER  
FOR YOUR  
RIGHT MOVE.**

**A**ll you really have to know about the new Hemi can be summed up in one sentence. Up to 20% more economy, plus the performance of a V-8—all for the price of a Six. But there's a lot more behind the story of Hemi's development and basic principles.

Our new Hemi Six is a generation ahead of any six-cylinder engine in Australia. It's the product of 5 years and 150,000 man-hours of joint effort by a U.S./Australia engineering team. And it's specially designed for Australian driving conditions.

The term "Hemi" means "hemispherical combustion chamber." That shape lets us use bigger intake and exhaust valves. So we get free-breathing cylinders. At the same time, the air/fuel mixture swirls smoothly in the domed chamber. And the power impulse from the spark plug travels a shorter distance. So the petrol burns evenly and completely.

Is the Hemi a proven engine? Absolutely. It's undergone 1,000,000 miles of rigorous road testing. Plus 23,000 hours of dynamometer tests. It is strong.

In addition, Chrysler mechanics have been tearing down and rebuilding Hemi's for the last 3 years. Parts availability is excellent. And our nation-wide dealer network has been trained to provide fast efficient service.

**INSIDE 770.  
THERAPEUTIC,  
FOR ALL THE RIGHT  
REASONS.**

**A**t the risk of waxing poetic, the interior of a 770 Hardtop is like owning your own private island. A great place to be when you're tired of the place you've just been.

Let's say you're waiting for the wife after a dull party. You walk ahead to the car, while she finishes chatting.

The door thunks shut, solid and firm, with anti-burst door locks for security. You start the engine. (If you really made the right move, you ordered optional Chrysler Airtemp air conditioning. That cool island retreat is fast becoming a reality.)

The wife is even slower than usual. So you relax in the Buffalo Grain vinyl bucket seat. Adjust the headrest. Recline the seat back. Slip off your shoes and rest your feet on the deep-pile carpet.

Try your hands on the soft-grip steering wheel. Flip the prismatic rear view mirror to cut down glare from following cars.

Turn on the headlights. They're square, and throw a long, solid beam of light.

Finally, the little lady has progressed to the front porch. Still talking with the hostess.

Tap the horn to hurry her up.

(Regal comes with twin horns. Because, even when you move up in the world, wives are prone to chatter.)



**SOLID PROOF  
THAT YOU'RE MAKING  
THE RIGHT  
MOVE.**

It isn't enough for us to say that our Hardtops are a step up. You want to know why they're superior. What's so good?

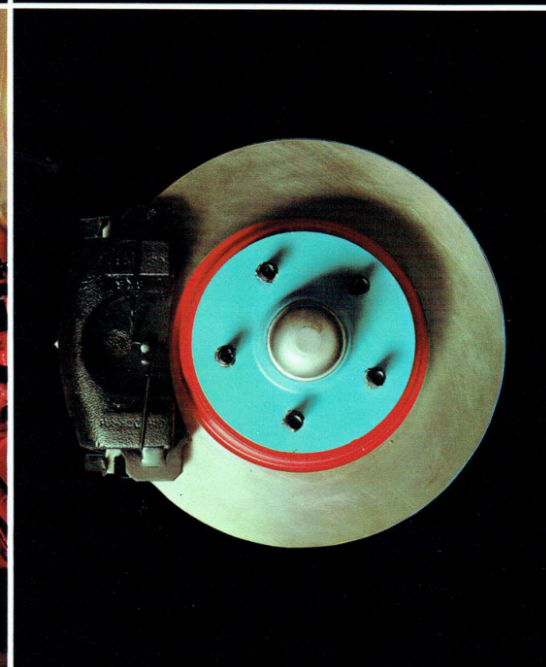
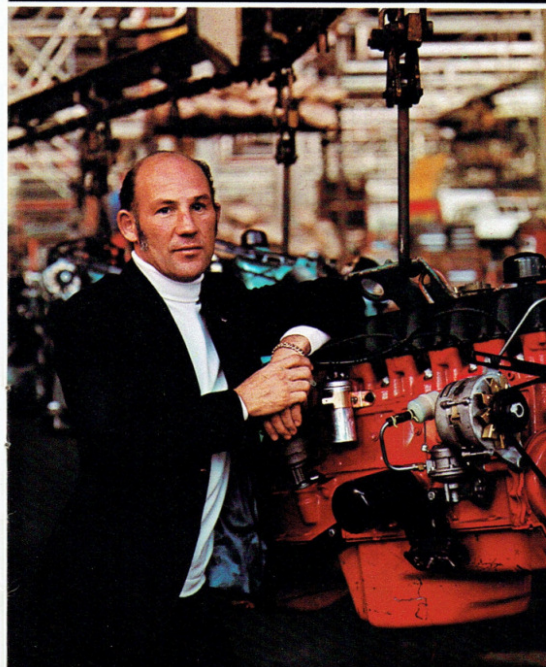
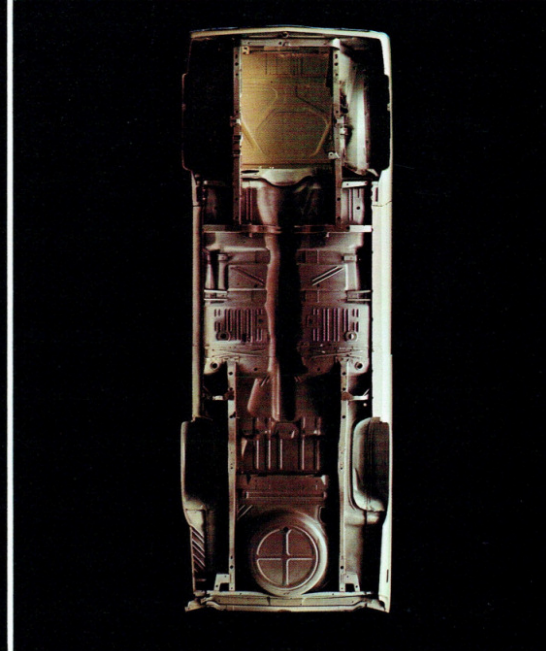
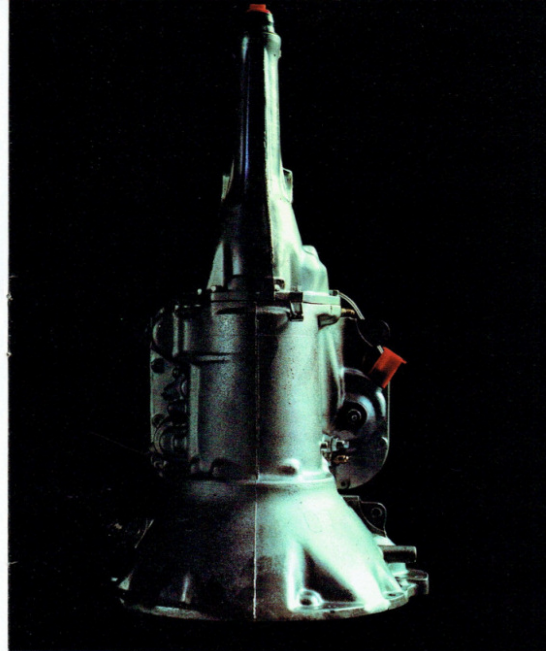
Here is a partial list of the Right Reasons built into every new Valiant Hardtop.

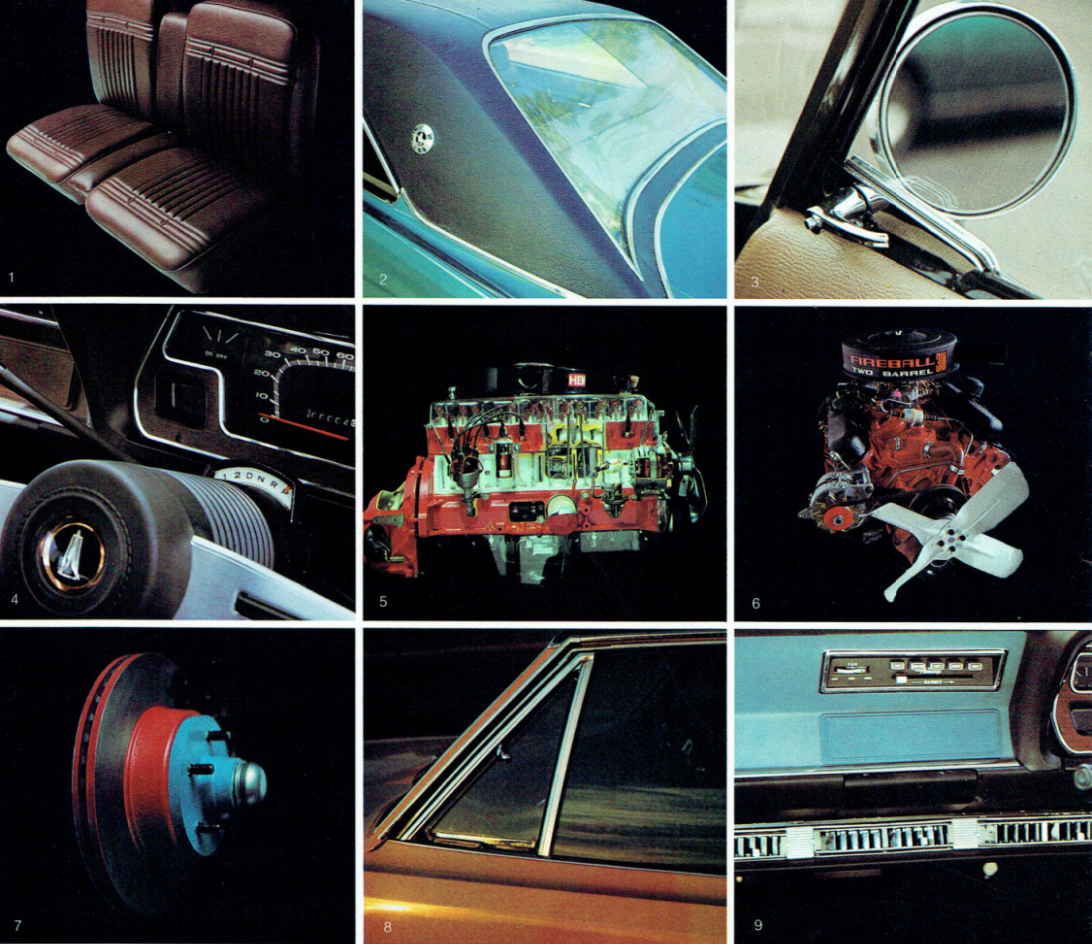
Start with the fact that we build the Hardtop in 3 editions, Valiant, Regal, and the top-of-the-line Regal 770. It's purely a matter of how far you want to move up. Each is powered by the revolutionary new Hemi Six engine. An amazing advancement that results in up to 20% better economy, plus the performance of a V-8. (A Hemi with single-barrel carburettor is standard for Valiant and Regal, not available for 770. A 2-barrel version is standard for the 770, optional on Valiant and Regal). All of the new Hardtops are assembled on a 111" wheelbase. This length gives us more freedom of design, resulting in the unique hardtop styling. In combination with independent torsion-bar suspension and asymmetrical rear leaf springs, the extra-long wheelbase also contributes to a smooth, controlled ride. Just as fundamental to solid quality is unibody construction. "Skin" and structural members are one and the same. They're fused by 5,000 individual welds, without the use of body bolts, a prime cause of squeaks and rattles. Then the single, unitized shell undergoes our exclusive 7 step pre-paint treatment. First the shell is sprayed 6 times in a series of cleaning, rinsing, and rust-preventing booths. The underbody is sprayed with a special gloss primer. Finally, it receives two coats of epoxy primer and 3 coats of acrylic enamel, all oven-baked. Results: A flint-hard, high-gloss finish . . . satin smooth. The total paint job weighs in the neighborhood of 25 pounds. But we don't stop there. Obviously, the smoothest of finishes won't keep out noise. So we line the body with a cocoon of special insulating and sound-deadening materials. And all engine and chassis components are isolated from the body with thick rubber cushions. For the ultimate in comfort, specify optional Chrysler Airtemp air conditioning, the best on the market. It's the only automatic unit that draws in outside air and

cleans it before cooling and dehumidifying. And the push-button controls are integrated right into the dash. For safe, sure stops, our Hardtops come with the biggest brakes in Valiant's class. And new floating-head caliper 11" disc brakes are standard on the 770, available for Regal and Valiant. What's more, there are 22 standard safety features this year, including a 360° impact-absorbing steering column. Chrysler's Torqueflite automatic transmission (standard on 770, optional for Valiant and Regal) is perhaps the most imitated automatic transmission in the world. Inside, the appointments are strictly move-up in look and quality. Full width vinyl bench seats for the Valiant, with vinyl buckets available. New Calf vinyl upholstery for Regal, with vinyl or cloth-and-vinyl buckets optional—complete with a fold-down centre cushion armrest. And in the top-of-the-line 770, new Buffalo Grain reclining buckets with centre console. All seats clean up with a damp cloth, and will wear for the life of the car.

"Most of us spend a lot of time riding in a car. As much as 2 or 3 hours a day, or more than 1/2 of a lifetime. At the same time, nobody wants to throw away money—either on initial price or petrol. So a car must be the best of two worlds—comfortable as well as sensible. To my mind, the new Valiant Hardtops fulfill both requirements supremely well. With the new Hemi Six, you get the economy. It's engineered with hemispherical combustion chambers. Extremely efficient, so that you get up to 20% more economy. But that hasn't been achieved at the expense of power. Hemi gives the performance of a V-8. On the other side of the coin, the new Hardtops look and ride beautifully. Plenty of comfort; torsion-bar suspension; beautifully appointed interiors. Since you spend so much time in a car, the new Valiant Hardtop is a very smart move. The right move. For all the right reasons."

*Steve Mors*





### FACTORY INSTALLED OPTIONS

1. Ahh. For the first time . . . a bucket seat for the Valiant Hardtop. Deep-foam padded, durable soft vinyl, wide variety of colours. The newest way to add sport to your family car. Available with or without centre cushion and armrest.  
 New cloth-and-vinyl Regal bucket seats. Cloth stays cool in summer sunlight; warm in winter. Vinyl looks great and protects against wear. Three colour choices.  
 2. Top off your "right buy" with a handsome vinyl roof. Available in black, green or parchment.  
 3. No more taking your eyes off the road to fiddle with the outside mirror. The remote control side-view mirror adjusts from the driver's seat. (Available on Regal and 6 cyl. 770 Hardtops.)  
 4. A lot of automatic transmissions have only 2 speeds. (They're cheaper to build that way.) Our Torqueflite has 3 . . . another "right reason" from Chrysler. Standard for Regal 770. Optional on other models.

5. Maybe you'd prefer more output. Then specify the Hemi Six 2-barrel carburetor. Standard for 770 Hardtop, optional on all other models.  
 6. Our proven 318 cu.in. V-8. Very quick for those who like getaway. Optional on Regal 770 Hardtop.  
 7. If you like the idea of having race-proven disc brakes . . . stop right here. Try out new floating-head caliper, ventilated discs which are virtually unaffected by rain or heat.  
 8. Funny thing about tinted side and rear glass. Once you've tried it you will never go without it again. Keeps the sun out and keeps you cooler inside. Available in all models. And standard with Airtemp air conditioning.  
 9. Air conditioning is built in the dash panel at the factory. Push button operated, keeps you cool and comfortable. Draws in fresh, outside air, removes 90% of dust and pollen as you drive. Chrysler's fastest growing comfort option.

### DEALER INSTALLED ACCESSORIES

- 8 Transistor Manual Radio
- 11 Transistor Manual Radio
- 11 Transistor Push Button Radio
- 13 Transistor Push Button Radio
- Rear Speaker Kit
- Tow bar with — Painted Tongue
- Tow bar with — Chrome Tongue
- Fuel Tank Locking Cap
- Gear Lever Lock-Column
- Heater — Motorless (not applicable Regal and Regal 770)
- Heater — Deluxe (not applicable Regal and Regal 770)
- Remote Control Rear View Mirror
- Trailer Mirror
- Glove Box Vanity Mirror
- Rear Seat Belts
- External front Sun Visor — Blade Type
- External front Sun Visor — Mesh Type
- External front Sun Visor — Vinyl Covered
- Door Weather Shield
- Mud Flap Package — Front
- Mud Flap Package — Rear
- External Insect Screen
- Front Floor Rubber Mats
- Windscreen Protector
- Wheel Trim Rings (Standard Regal and Regal 770)
- Wheel Covers
- Number Plate Frames
- Engine Hood Ornament
- Wheel Opening Moulding Package
- Sill Moulding Package
- Exhaust Extension
- Glove Box Lamp
- Tape Player
- Rear Spring Helper
- Air Conditioning — Hang on Unit
- Power Brake Booster (for disc and drum brakes)
- Surf Board Racks
- Cool Cushion
- Trouble Lamp
- Tow Rope.

### VALIANT FACTORY INSTALLED OPTIONS.

#### VALIANT HARDTOP

- 245 2-BBL 6-cylinder engine.
- 3-speed automatic transmission column shift.
- Sure Grip differential, ratio 3.23:1.
- Sure Grip differential, ratio 2.92:1.
- Ventilated front disc brakes.
- Power steering — (not available with manual transmission).
- Airtemp air conditioning with tinted side and rear glass.
- Tinted side and rear glass.
- Non-reclining bucket seats.
- Centre cushion with armrest — (available only with non-reclining bucket seats).
- Vinyl roof.
- Two-tone roof.

#### REGAL HARDTOP

- 245 2-BBL 6-cylinder engine with automatic transmission and power disc brakes.
- 3-speed automatic transmission column shift.
- Sure Grip differential, ratio 3.23:1.
- Sure Grip differential, ratio 2.92:1.
- Ventilated front disc brakes.
- Power steering — (not available with manual transmission).
- Airtemp air conditioning with tinted side and rear glass.
- Tinted side and rear glass.
- Remote control side-view mirror.
- Reclining bucket seats with centre cushion.
- Reclining bucket seats with centre cushion — (cloth-and-vinyl).
- Vinyl roof.
- Two-tone roof.

#### REGAL 770 HARDTOP

- 318 cu.in. V-8 engine.
- Sure Grip differential, ratio 3.23:1 — (with 6-cylinder engines only).
- Sure Grip differential, ratio 2.92:1.
- Power steering.
- Airtemp air conditioning with tinted side and rear glass.
- Tinted side and rear glass.
- Remote control side-view mirror — 6 cyl. only.
- Vinyl roof.
- Two-tone roof.

## HARDTOP COLOURS



Chartreuse Metallic.



Hot Mustard.



Capri Blue.



Sky Blue Metallic.



Silver Cloud Metallic.



Copper Red Metallic.



Sandstone.



Crystal Turquoise.



Spring Gold Metallic.



Alpine White.



Mahogany Metallic.



Navaho Beige.

**Dimensions.** Wheelbase 111". Overall length 199.82". Front track 57.9", 58.32" with disc brakes, rear track 56.3". Overall width 69.7". Overall height 53.5".

**Engines.** Hemi 245 cu.in., 1 barrel 6-cylinder, in-line. Overhead valves. Develops 165 brake horsepower @ 4400 rpm and 235 lb/ft. torque @ 1800 rpm. Compression ratio 9.5:1. Bore x stroke 3.76 x 3.68. 35 amp alternator. Hydraulic tappets. Seven bearing crankshaft. Hemi 245 cu.in., 2 barrel 6-cylinder, in-line. Overhead valves. Develops 185 brake horsepower @ 4600 rpm and 240 lb/ft. torque @ 2000 rpm. Compression ratio 9.5:1. Bore x stroke 3.76 x 3.68. 2-barrel carburettor with matched performance camshaft. Low restriction snorkel air cleaner. 35 amp alternator. Hydraulic tappets. Seven bearing crankshaft.

318 cu.in. 90° V-8. Develops 230 brake horsepower @ 4400 rpm and 340 lb/ft. torque @ 2400 rpm. Compression ratio 9.2:1. Bore 3.91". Stroke 3.31". 35 amp alternator.

**Transmission.** Manual: 3-speed, all synchromesh gearbox. Shift lever column mounted. Ratios 1st 2.95:1; 2nd 1.69:1; 3rd 1.00:1; Reverse 3.67:1.

Automatic Torqueflite: Torque convertor fully automatic transmission with manual override on 1st and 2nd gears. Column lever on Valiant and Regal Hardtop. Standard with floor console on Regal 770 Hardtop.

**Rear Axle.** Hypoid, semi-floating type. Gear ratio, 2.92:1 (245 c.i.d. 6-cylinder and 318 V-8). Sure Grip differential available as factory option with ratios of 2.92:1 (6-cylinder and V-8), 3.23:1 (6-cylinder only).

**Brakes.** Dual master cylinder with independent front and rear circuits. Duo-servo drum: 9" diameter front and rear. Lining area 157.9 sq.ins. Shoes automatically adjust during reverse stops. Power assisted 11" diameter ventilated front disc brakes with floating head calipers standard on Regal 770, and Regal with 2BBL

6-cylinder engine. Swept disc/drum area 481.8 sq.ins. **Wheels and Tyres.** Double-sided 5" safety rims. 5.5" on Regal 770 Hardtop. 6.95 x 14" x 4 ply standard on all 6 cylinder models. 7.35 x 14" x 4 ply standard on V-8 model. White wall tyres are standard on Regal range. **Suspension.** Independent front suspension with chromium alloy steel torsion bars. 4 leaf rear suspension. Telescopic shock absorbers all round.

**Fuel Tank Capacity.** 15 gallons.

**Instrumentation.** Speedometer. Odometer. Tachometer (Regal 770 only). Ammeter. Fuel gauge. Oil pressure warning light. Water temperature gauge. Braking system and handbrake warning light. Indicator warning lights. High beam warning light. Variable instrument panel light.

**Curb Weight:** (approx. unladen with petrol and water.)

Valiant Hardtop — 6 cylinder from 2915 lbs.

Regal Hardtop — 6 cylinder from 2955 lbs.

Regal 770 Hardtop — V-8 3165 lbs.

Regal 770 Hardtop — 6 cylinder 3030 lbs.

**Safety Equipment.** Front lap and sash seat belts. Energy-absorbing steering column. Padded steering wheel hub. Dual master cylinder braking system. Power-operated windscreen washers. 2-speed windscreen wipers. Non-glare windscreen wiper arms and blades. Safety padded sunvisors. Swing-away interior rear-view mirror. Full width instrument panel padding. Recessed instruments. Exterior rear-view mirror. Safety flush-fitting door handles. "Up-top, up-front" park and turn signal lights. Double-sided safety rim wheels. Safety zone windscreen. Panoramic rear window. Anti-burst door locks. New 75/60 watt rectangular headlamps. Fusible link wiring. Reversing lights.

**Comfort and Convenience.** Luxury 2-tone stitched seating. Fingertip horn tabs and half horn ring. Padded arm-rests. Recessed cigar lighter. Ash trays front and

rear. Coat hook. Interior courtesy light. Remote control hood lock. Fresh flow ventilation.

In addition to the standard equipment listed above, the following equipment is provided on Regal and Regal 770 Hardtop models:

Regal: 2-speed heater/demister. New Calf vinyl upholstery. Wall-to-wall carpeting. Wheel trims. Dual horns. Regal Body mouldings. Hood ornament. Prismatic non-glare interior rear-view mirror. Luggage compartment light. Glove box vanity mirror.

Regal 770: 2-speed heater/demister. Buffalo grain vinyl, reclining bucket seats. Console with shift lever. Soft grip steering wheel. Wall-to-wall carpeting. Wheel trims. Dual horns. 770 ornamentation. Hood ornament. Prismatic interior rear view mirror. Luggage compartment light. Glove box vanity mirror.

The policy of Chrysler Australia Limited is one of continual improvement in design and manufacture wherever possible to assure a still finer car. Hence specifications, equipment and prices are subject to change without notice.

 **CHRYSLER**  
AUSTRALIA LTD.



# HARDTOP

