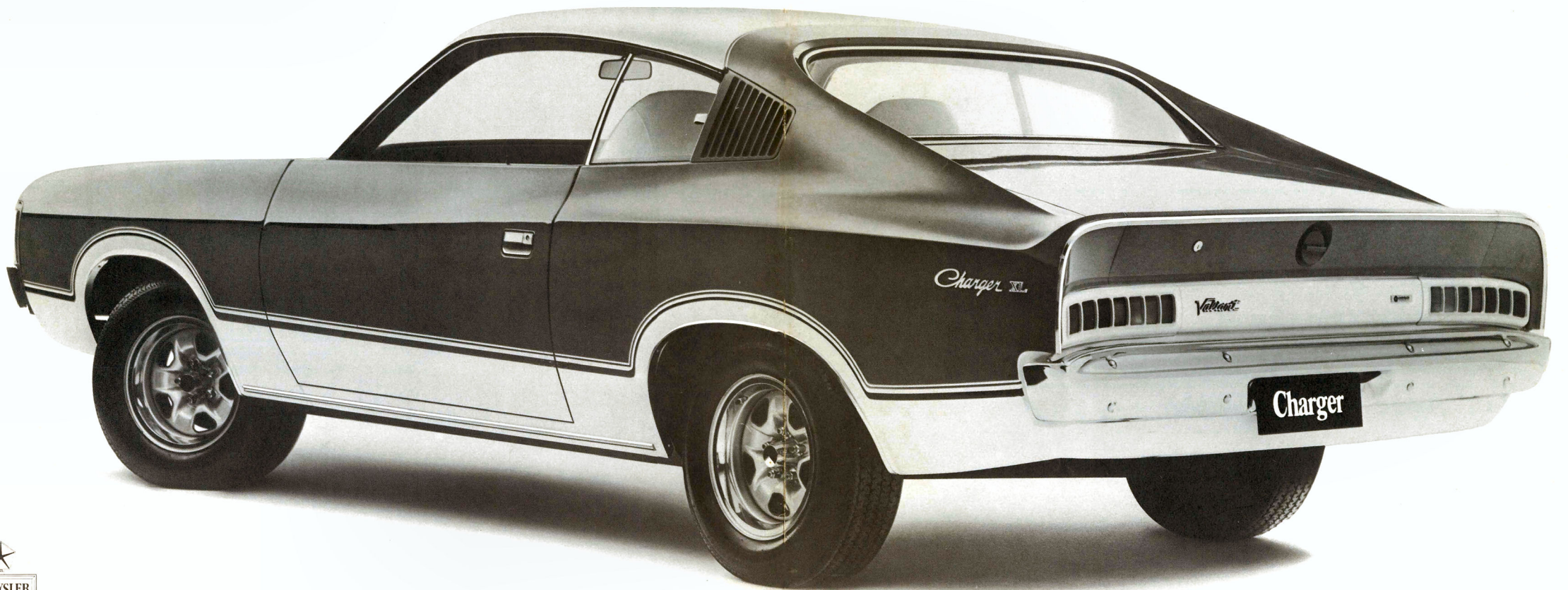


LIMITED EDITION

CHARGER SPORTSMAN.



Chrysler go one better with Charger Sportsman.



CHARGER SPORTSMAN. LIMITED EDITION, UNLIMITED STYLE.

Sportsman.

The limited edition special car for individuals who want something individual.

Exterior Style.

Hot-blooded Vintage Red paint treatment with distinctive white coachline accent and white Landau-style roof.

Red-line accented sports wheels and radial ply tyres.

Interior Style.

Matching interior trim in red, black and white. White reclining bucket seats with distinctive Wimbledon plaid cloth trim.

Matching red wall-to-wall carpet.

Matt black instrument panel with sports instrument cluster including tachometer.

Soft-grip 3-spoke sports steering wheel.

Going in Style.

Hemi 265 2-barrel engine. 4-on-the-floor or optional 3-speed automatic console shift.

Power assisted front disc brakes.

2.92:1 ratio rear axle.

Road hugging front anti-sway bar.

The policy of Chrysler Australia is one of continual improvement in design and manufacture wherever possible to assure a still finer car. Hence specifications, equipment and prices are subject to change without notice.