



Valiant Panel Vans





Sports Pack dash with optional radio.

You know what they are doing with vans these days.

Fat wheels and stripes plus added cabin comforts.

It is a great idea: even if you work your van hard, you can also use it to play hard too.

Now Chrysler do the hard work for you leaving your time free for doing what you want to do.

Inside it's fitted out after the style of our top-of-the-line Charger.

Reclining bucket seats, carpeting, full instrumentation (big tach, matt black dash), sporty 3-spoke wheel, floor shift.

Outside, 6 inch styled wheels, anti-sway bar, racy Charger grille and Q.I. high beam headlights.

The Chrysler Valiant Sports Van sets the workhorse loose on this big country, to carry your fun right to where you want to have it.



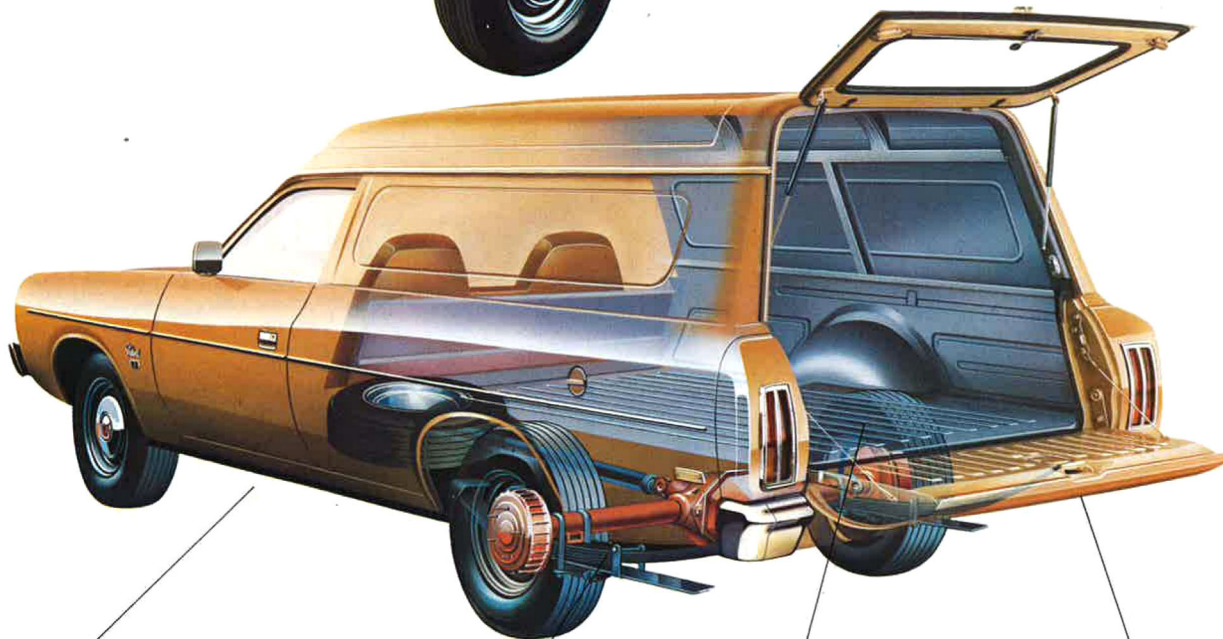
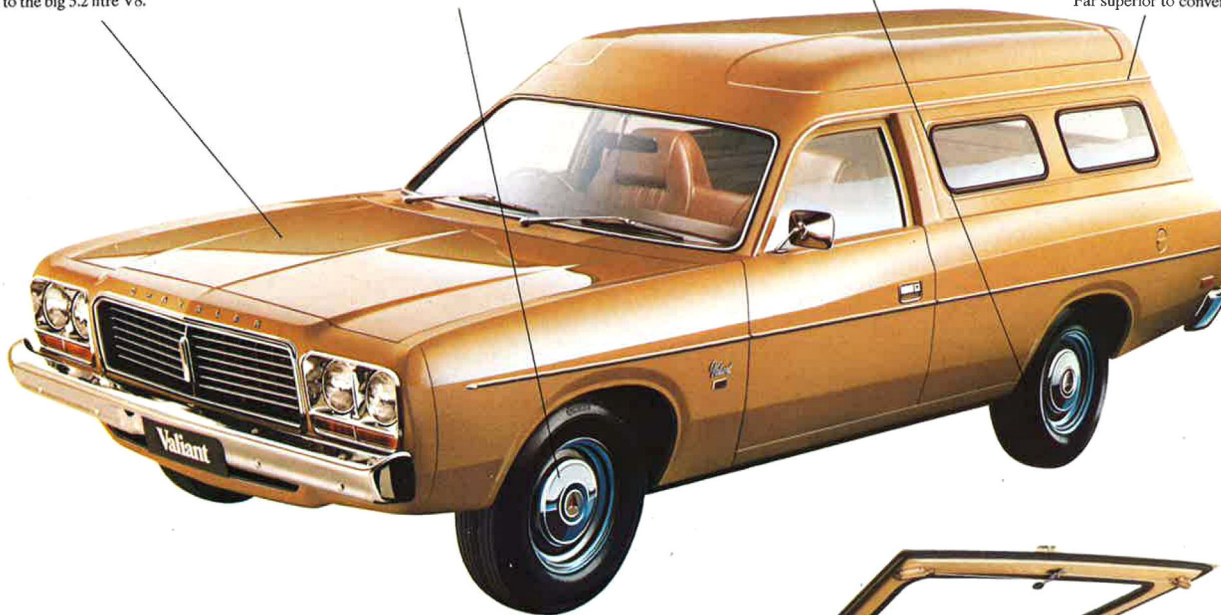
Deep vinyl bucket seats shown with optional automatic with centre console.

Hemi engines have lodged over 8 million owner kilometres. Standard version is the regular fuel Hemi 4.0 litre. Optional: the high compression 4.0 litre, and the 4.3 litre sixes, or power up to the big 5.2 litre V8.

Improved, sliding caliper 279 mm (11 in.) diameter power assisted front disc brakes. Greater stopping power— Tremendous fade resistance.

5½" road wheels with double safety rims, and F78S14 4 ply tyres—standard equipment. You can haul a full 740 kg safely and smoothly.

EPD rust protection. Entire body is immersed in a tank of primer, then exposed to electric current which gives a uniform coat of primer in every corner and crevice. Far superior to conventional sprayed-on primer.



Wheelbase: 2819 mm. Front track 1481 mm. Rear track 1491 mm. Smooth, stable handling on a long, wide base.

Dual-rate rear springs, for a controlled ride even with a full load in the back. Also: the springs are coated with graphite. Can't ever squeak, because they're self-lubricating.

The heavy duty tray is completely flat; 2169 mm long; 1516 mm wide; 1158 mm between wheel arches. And the lower sides are double-wall constructed.

Our two-position tailgate. Dropped to position 1, it's like extending your van by 482 mm for those long loads. Down all the way, you can back flush against loading ramps for fast, easy loading.

The Chrysler Valiant Van. It has strength combined with style, guts with go. It's the worker's best mate, a van to work hard because you can depend on it.

On the job, loading and unloading, the hard part is made easy by a two position tailgate. Horizontal, it extends the load bed for those awkward long loads; dropped right down, it lets you back up close to loading bays. The rear window hatch has two gas-filled struts for smooth and light, easy, simple opening. The big, wide, deep load area has double wall lower panels to take the hard knocks of the working day.

Torsion bar suspension with front and rear hydraulic telescopic shock absorbers plus dual rate rear leaf springs make light work of the heaviest loads.

Power boosted 279 mm (11.0 in.) ventilated front disc brakes and the brake system pressure proportioning valve, make sure you stop when you need to, safely and smoothly.

Inside there's a full width, 3 man bench seat to support you firmly and comfortably and make the days work a little easier to take, or you have the option of body hugging bucket seats with full cabin width carpet.

Under Chrysler's Valiant Van styling, Chrysler's standard 6 cylinder 4 litre hemi engine squeezes maximum power from regular grade petrol.

Alternatively order the same size engine tuned for premium grade fuel. Or the extra power of the 4.3 litre six, or the big 5.2 litre V8.

All fed through two barrel carbies.

All sparked by electronic ignition, instead of condensers and points, transistors that don't move, ignore rain and cold.

You choose your engine, you choose your transmission, auto or manual. And like all their products, Chrysler back their vans for a full twelve months, no matter how far you drive.

Chrysler Valiant Van: it works for its living, depend on it to earn yours.



Optional push-button radio or combination stereo cassette/radio.



Multi-use stalk control.

Easy-to-read instrumentation.

Standard interior.



The in-built benefits of Chrysler advanced engineering.

First, Torsion Bar suspension, and unibody construction.

Torsion bar suspension has been a feature of Valiant since it was first introduced. And so has unibody construction.

In the new Valiant Van, the two systems complement each other.

Torsion bars capture the energy of road shock with a twisting action.

In the event of a bad pothole causing a violent shock, any vibration runs up against unitized construction.

There are no body bolts to shake loose or rattle.

Thousands of welds form an incredibly strong unit . . . like an air-frame.

Next, Electronic Ignition.

Ignition points and condensers have always had the problem of eventually wearing out.

But all Valiants are available with the Chrysler electronic ignition system.

The condenser and points have been eliminated. So they'll never need to be replaced.

Spark plug life is extended. And the timing won't have to be touched for 24,000 kilometres.

But most importantly, the electronic ignition delivers 35% more starting voltage for sure starts in wet and cold.

And helps to ensure efficient combustion.

Hot Air Intake.

This device simply pre-heats air before being mixed with fuel in the carburettor.

If you combine this Hot Air Intake with Valiant's Hemispherical combustion chambers, and electronic ignition, it results in more efficient combustion and a minimisation of exhaust emission.

Painting with electricity.

The Electrophoretic dip is the process used to prime all Chrysler Valiant bodies.

The body is placed in a tank-full of primer which has an electric current running through it.

It greatly improves rust resistance because the primer bonds with the body and penetrates into every little crevice.

DIMENSIONS, WEIGHTS AND CAPACITIES.

Overall Length: 4988 mm (196.4"). Overall Width: 1885 mm (74.2"). Overall Height: 1672 mm (65.8"). Wheelbase: 2819 mm (111.0"). Track: Front—1481 mm (58.3"). Rear—1491 mm (58.7"). Turning Circle: 11.8 metres (38.6 ft.). Fuel Tank Capacity: 72.9 litres (16.0 galls). Kerb mass Hemi 6 1438 kg, V8 1500 kg, load capacity 740 kg, sportspack (with 185SR14 radial tyres) 500 kg. Cargo Compartment dimensions: Length (Max.) 2170 mm (85.4"). Width (Max.) 1516 mm (59.7"). Width (Between Wheel Arches) 1158 mm (45.6"). Rear opening. Tailgate Width 1189 mm (46.8"). Overall Height: 978 mm (38.5"). Inside Height floor to roof 1016 mm (40.0").

TRANSMISSION.

Manual 3-speed column shift standard. Automatic 3-speed column shift optional.

CLUTCH.

Type: Single Dry Plate with Diaphragm Pressure Plate. Size: 241 mm (9.5") diameter.

REAR AXLE.

Type: Semi-Floating Hypoid Gear drive. Ratios: 4.0 litre low compression 6; 3.23:1 4.0 litre high compression 6; 4.3 litre 6 and 5.2 litre V8 2.92:1.

Optional sure grip axle, with 2.92:1 ratio is available on all models and engine combinations except 4.0 litre low compression engines.

SUSPENSION.

Front: Independent with torsion bar and dual action hydraulic telescopic shock absorbers. Anti-sway bar. Rear: Dual rate leaf springs with dual acting hydraulic telescopic shock absorbers.

STEERING.

Manual steering: Recirculating ball and nut. Turn lock to lock—4.5.

BRAKES.

Power boosted with Pressure Sensitive Proportioning Valve. Front: 279 mm (11.0") diameter disc. Rear: 254 mm (10") diameter drum. Tandem master cylinder.

WHEELS AND TYRES.

Wheels: 5½" x 14" JJ. Tyres: F78S14 x 4 ply.

INSTRUMENTATION.

Speedometer. Odometer. Ammeter, Fuel gauge, Oil Pressure warning light, High beam warning light, Turn signal indicators. Braking system and handbrake warning lights.

COLOUR INFORMATION.

Separate literature is available.

STANDARD EQUIPMENT.

Door courtesy switches. Hazard Warning Lights. Cigarette lighter. Glove box lock. Prismatic rear view mirror. Dual Horns. Engine compartment light. Body side mouldings.

STANDARD SAFETY FEATURES.

Dual headlamps. Anti-sway bar. Seat belts. (2 retractable). 360° energy-absorbing steering column. Padded steering wheel hub. Power assisted braking system with pressure proportioning valve. Tandem master cylinder. Front disc brakes. Rear finned drum brakes. Clear plastic master cylinder to check fluid level. Brake failure and handbrake warning lights. Flush fitting door handles, side impact protected, non override. Door reflectors. Power operated windscreen washers. Two speed windscreen wipers. Non-glare windscreen wiper arms and "speed" blades. Safety padded sunvisors. Padded armrest door handles plus soft knob window winders. Cushioned instrument panel (all controls) behind steering wheel. Break-away interior rear view mirror. Reversing lamps. Double engine hood latch with interior release. Safety zone toughened windshield. Double-sided safety wheel rims. Fusible link wiring. Anti-glare recessed instrument panel, with variable lighting. Solid unibody construction with side impact bars. Hazard warning system.

SPORTSPACK VAN—STANDARD EQUIPMENT.

Engine: 4.0 litre (245 cu. in.) low compression Hemi 6. Transmission: 3-speed manual with floor change lever. Reclining bucket seats. Floor carpet. Sports instrument cluster. 3 spoke sports steering wheel—soft grip. Sports front grille. Q.I. high beam headlamps. Rear compartment headlining and floor carpet. Improved suspension. Rear compartment dome light. 6.0" styled road wheels and trim rings.

OUR 12 MONTH/UNLIMITED KILOMETRES WARRANTY.

Chrysler are always out to build better cars . . . And now there's further proof.

All are now covered by a 12 months/ unlimited kilometres warranty.

So you can drive as far as you want in the first year with full warranty protection.

We're the first Australian car manufacturer to show this kind of confidence in its products.

Options:	
Tinted laminated windscreen	O
Radio/stereo cassette player	O
Push button radio	O
Reclining bucket seats with floor carpet	O
4.0 litre H.C. (245 cu. in.) 6 cylinder engine	O
4.3 litre (265 cu. in.) 6 cylinder engine	O
5.2 litre (318 cu. in.) V8 engine	O
4-speed manual trans. and console N/A with 4.0 litre engine	‡
3-speed manual floor trans. N/A with 5.2 litre V8	‡
Console Shift Auto.	‡
Automatic transmission—column shift N/A with Sports Pack	O
2.92:1 Sure grip rear axle	O
F78S14 x 6 ply tyres	O
185SR Radial Tyres (10 cwt rating)	‡
FR78S steel belt radials	‡
Cast Alloy Road Wheels. Requires FR78S Steel Belt Radial Tyres	‡
Sport Pack (For contents, see text)	O
Towing Pack—Medium Duty	O
—Heavy Duty	O
Metallic Paint	O
Bumper Bar overrider package (Front only)	O
Partition Panel (With bucket seats only)	O
Side Windows	O
Sports Stripe. Tailgate "black-out" paint treatment	‡
Air Conditioning	O
Power steering (with Automatic transmission only)	O
Fuel Pacer	O
Full Wheel Covers	O

O Optional

‡ Sports Pack Van only

ENGINE DETAILS	6 cylinder 4.0 litre (Regular fuel) (Standard)	6 cylinder 4.0 litre H.C. (Optional)	6 cylinder 4.3 litre (Optional)	V8 5.2 litre (Optional)
Type	6 cyl. In-Line, OHV	6 cyl. In-Line, OHV	6 cyl. In-Line, OHV	8 cyl. "Vee" OHV
Capacity	4015 cc (245 cu. in.)	4015 cc (245 cu. in.)	4345 cc (265 cu. in.)	5211 cc (318 cu. in.)
Compression Ratio	7.6:1	9.0:1	9.1:1	8.2:1
Carburettor	Two barrel with automatic choke	Two barrel with automatic choke	Two barrel with automatic choke	Two barrel with automatic choke
Ignition System	Electronic	Electronic	Electronic	Electronic
Fuel	Regular	Premium	Premium	Premium

All product illustrations and specifications are based on authorised information. Although descriptions are believed correct at publication approval, accuracy cannot be guaranteed. Some of the equipment shown on product illustrations is optional at extra cost. Chrysler Australia Limited reserves the right to make changes from time to time without notice or obligation, in prices, specifications, colours and materials, and to change or discontinue models.

