

Valiant Utility



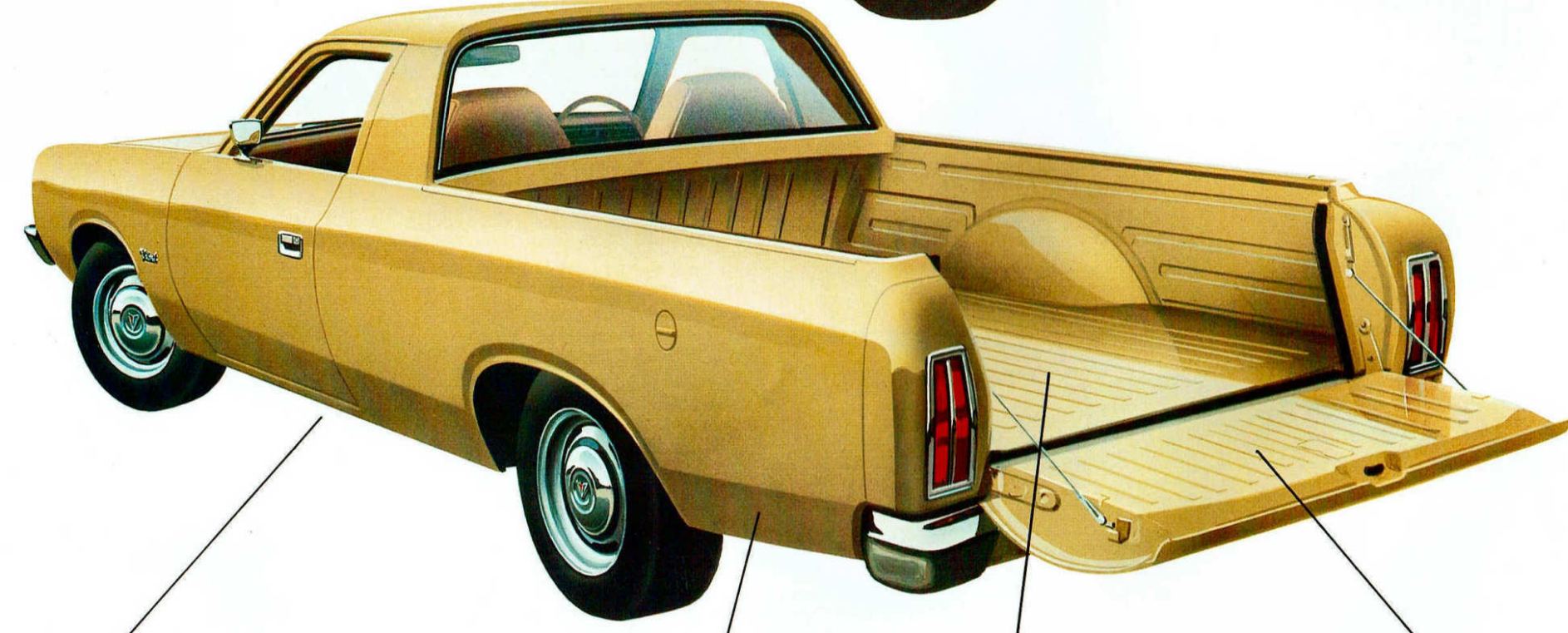
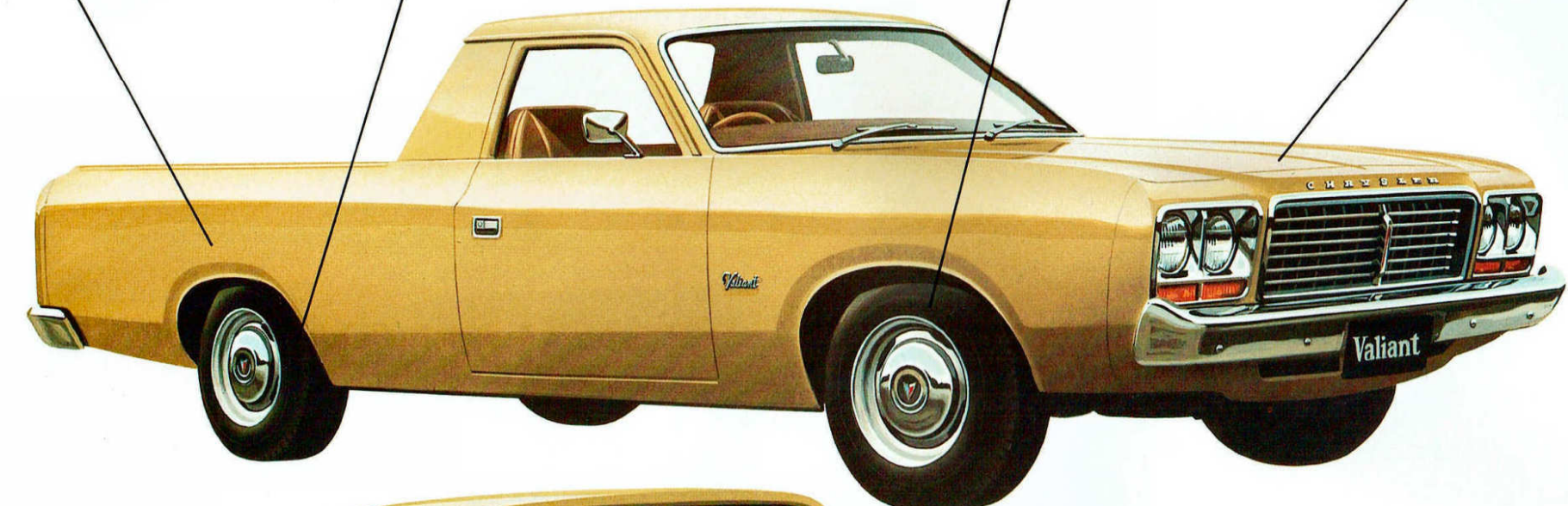


EPD rust protection. Entire body is immersed in a tank of primer, then exposed to electric current which gives a uniform coat of primer in every corner and crevice. Far superior to conventional sprayed-on primer.

5.5" wheel with double-sided safety rims, and F78S x 14" x 4 P.R. tyres—standard equipment. You can haul a full 740 kg safely and smoothly.

Improved sliding caliper power assisted disc brakes. Tremendous fade resistance—greater stopping power.

Hemi engines have lodged over 5,000,000 owner miles. Standard version is the regular fuel Hemi 4.0 litre. Optional: The H. C. Hemi 4.0 litre or big 4.3 litre.



Wheelbase: 2819 mm. Rear track: 1491 mm. Smooth, stable handling on a long, wide base.

Dual-rate rear springs, for a controlled ride. No skip or bounce with a full load on the tray. Also: the springs are coated with graphite. Can't ever squeak, because they're self-lubricating.

The heavy duty tray is completely flat; 2169 mm long; 1516 mm wide; 1158 mm between wheelarches. And the sides are double-wall constructed.

Our two-position tailgate. Dropped to position 1, it's like extending your ute by 482 mm. Down all the way, you can back flush against loading ramps for fast, easy loading.

When you use the word "utility" think what it means. It's got something to do with being adaptable, being useful.

And that's why Chrysler's Valiant is the utility Ute. It's got room enough for any man's burden.

There's no spare wheel to get in your way.

Loading and unloading is made easy by the 2 position tail-gate that drops right down, lets you back up close.

Torsion-bar suspension and front and rear hydraulic telescopic shockers plus dual rate rear springs lighten the heaviest loads.

Power-assisted front disc brakes and the rear pressure proportioning valve make sure you stop where you want, when you want.

Inside there's a full-width bench seat designed with differentiated support areas: it holds you firmly and comfortably.

Or you've got the option of bucket seats, and carpet.

Cabin courtesy lights and a light under the bonnet brighten the dark side of the day.

And the prismatic mirror cuts the reflected glare of night driving.

Under the re-shaped bonnet behind the dual headlights, Chrysler's 6 cylinder 4 litre hemi engine squeezes maximum power from regular grade petrol.

Alternatively order the same engine tuned for premium grade fuel. Or the extra power of the 4.3 litre six, or the big 5.2 litre V8.

All fed through two barrel carbies.

All sparked by electronic ignition.

Instead of condensers and points, transistors that don't move, ignore rain and cold.

You choose your engine, you choose your transmission: auto or manual. And like all their products, Chrysler back their utes for a full twelve months, no matter how far you drive.

Valiant Ute. It works for its living.



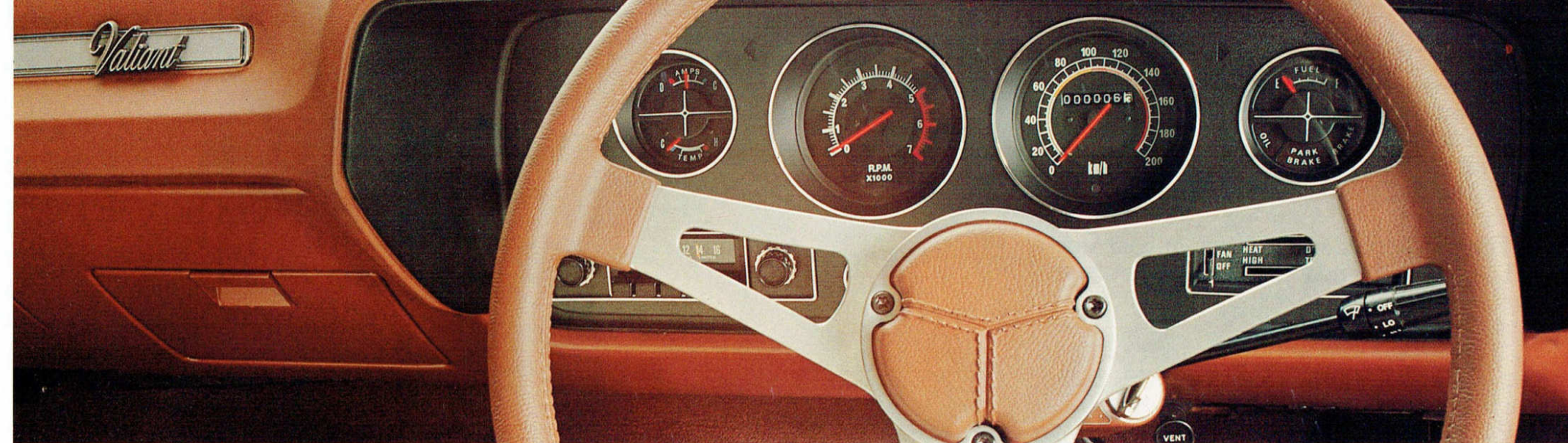
Optional push-button radio or combination stereo cassette/radio.



Multi-use stalk control.

Easy-to-read instrumentation.

Standard interior.



Sports Pack dash with optional radio.

For years guys have been customizing their standard Valiant Utes.

Fat wheels, stripes and decals, cabin comforts.

It was a good idea: If you could work your ute hard, you could use it to play hard too.

Now Chrysler do the hard work for you, leaving your time free for doing what you want to do.

Inside it's fitted out after the style of our top-of-the-line Charger.

Reclining bucket seats, carpeting, full instrumentation (big tach, matt black dash), sporty 3-spoke wheel, floor shift.

Outside, 6 inch styled wheels, anti-sway bar, racy Charger grille, tonneau cover, Q.I. high beam headlights and a tough side stripe.

The sportspack sets the workhorse loose on this big country, to carry your trail bikes and your camping gear where you need them.

Deep vinyl bucket seats shown with optional automatic with centre console.



The in-built benefits of Chrysler advanced engineering.

First, Electronic Ignition

Ignition points and condensers have always had the problem of eventually wearing out.

But, all Valiants are available with an exclusive electronic ignition system.

The condenser and points have been eliminated. So they'll never need to be replaced.

Spark plug life is extended. And the timing won't have to be touched for 80,000 kilometres.

But most importantly, the electronic ignition delivers 35% more starting voltage for sure starts in wet and cold.

And helps to ensure efficient combustion.

Next, Torsion Bar suspension, and unibody construction.

Torsion bar suspension has been a feature of Valiant since it was first introduced. And so has unibody construction.

The two systems complement each other.

Torsion bars capture the energy of road shock with a twisting action.

In the event of a bad pothole causing a violent shock, any vibration runs up against unitized construction.

There are no body bolts to shake loose or rattle.

Thousands of welds form an incredibly strong unit . . . like an air-frame.

Hot Air Intake

This device simply pre-heats air before being mixed with fuel in the carburettor.

If you combine this Hot Air Intake with Valiant's Hemispherical combustion chambers, and electronic ignition, it results in more efficient combustion and a minimisation of exhaust emission.

Painting with electricity.

The Electrophoretic dip is the process used to prime all bodies.

The body is placed in a tank-full of primer which has an electric current running through it.

It greatly improves rust resistance because the primer bonds with the body and penetrates into every little crevice.

DIMENSIONS, WEIGHTS AND CAPACITIES

Overall Length: 4988 mm (196.4"). Overall Width: 1885 mm (74.2"). Overall Height: 1402 mm (55.2"). Wheelbase: 2819 mm (111.0"). Track: Front—1481 mm (58.32"). Rear—1491 mm (58.72"). Turning Circle: 11.8 metres (38.6 ft.). Fuel Tank Capacity: 72.9 litres (16.0 galls.). G.V.M. 2130 kg. G.V.M. Sports Pack 1965 kg. (4 ply tyres) kerb mass 1374 kg, load capacity 740 kg. Tray Dimensions: Length (Max.) 2169 mm (85.4"). Width (Max.) 1516 mm (59.7"). Width (Between Wheel Arches) 1158 mm (45.6"). Depth 396 mm (15.6"). Tailgate Width 1189 mm (46.8").

TRANSMISSION

Manual 3-speed column shift standard. Automatic 3-speed column shift optional.

CLUTCH

Type: Single Dry Plate with Diaphragm. Pressure Plate. Size: 241 mm (9.5") diameter.

REAR AXLE

Type: Semi-Floating Hypoid Gear drive.

SUSPENSION

Front: Independent with torsion bar and dual action hydraulic telescopic shock absorbers. Rear: Dual rate leaf springs with dual acting hydraulic telescopic shock absorbers.

STEERING

Manual steering: Recirculating ball and nut. Turn lock to lock—4.5.

BRAKES

Power boosted with Pressure Sensitive Proportioning Valve. Front: 282 mm (11.1") diameter disc. Rear 229 mm (9.0") diameter drum. Tandem master cylinder.

WHEELS AND TYRES

Wheels: 14" x 5.5" J.J. Tyres: F78S14 x 4 Ply BSW.

INSTRUMENTATION

Speedometer, Odometer, Ammeter, Fuel gauge, Oil Pressure warning light, Highbeam warning light, Turn signal indicators. Braking system and handbrake warning lights.

COLOUR INFORMATION

Separate literature is available.

STANDARD EQUIPMENT

Door courtesy switches. Cigarette lighter. Glove box lock. Prismatic interior mirror. Dual horns. Engine compartment lamp.

STANDARD SAFETY FEATURES

Seat belts (2retractable). 360° energy-absorbing steering column. Tandem master cylinder, power assisted braking system, front discs. Pressure proportioning valve. Dual headlights. Brake failure and hand brake warning lights. Flush fitting door handles, side impact protected, non override. Door reflectors. Power operated windscreen washer. Padded steering wheel hub. Two speed windscreen wipers. Non-glare windscreen wiper arms and "speed" blades. Safety padded sunroofs. Padded armrest door handles plus soft knob window regulators. Cushioned instrument panel (all controls behind steering wheel). Break-away interior rear view mirror. Reversing lamps. Double engine hood latch with interior release. Safety-zone toughened windshield. Double-sided safety wheel rims. Fusible link wiring. Anti-glare recessed instrument panel with variable lighting. Solid unibody construction. Hazard warning system.

Our 12 month/unlimited kilometres warranty.

Chrysler are always out to build better cars . . .

And now there's further proof.

All are now covered by a 12 months/unlimited kilometres warranty.

So you can drive as far as you want in the first year with full warranty protection.

We're the first Australian car manufacturer to show this kind of confidence in its products.

| Options | |
|--------------------------------------------------------------------|---|
| Tinted gradated laminated windscreen | O |
| Radio/stereo cassette player | O |
| Radio—Push button | O |
| Tonneau cover and hooks | O |
| F78S14 x 6 Ply BSW tyres | O |
| Wheel covers | O |
| Automatic transmission—column shift | O |
| 2.92:1 Sure grip rear axle (N/A with 4.0 litre Regular fuel eng). | O |
| 4.0 litre H.C. (245 cu. in.) 6 cylinder engine | O |
| 4.3 litre (265 cu. in.) 6 cyl. engine | O |
| 5.2 Litre (318 cu. in.) V8 engine | O |
| Towing Package—Medium Duty | O |
| —Heavy Duty | O |
| Air Conditioning | O |
| Power steering (with Auto. only) | O |
| Fuel Pacer | O |
| Reclining bucket seats with floor carpet | O |
| Sport Package | O |
| 4-speed manual trans. (With Sport Pack only) | O |
| FR78S steel belt radials (With Sport Pack only) | O |
| 185SR Radial Tyres 10 cwt rating (With Sport Pack only) | O |
| Console Shift Auto. (With Sport Pack only) | O |
| Cast Alloy Road Wheels (With Sport Pack only) Requires FR78S tyres | O |

O = optional

| ENGINE DETAILS | 6 cylinder 4.0 litre (Regular fuel) (Standard) | 6 cylinder 4.0 litre H.C. (Optional) | 6 cylinder 4.0 litre (Optional) | V8 5.2 litre (Optional) |
|-------------------|------------------------------------------------|--------------------------------------|---------------------------------|---------------------------------|
| Type | 6 cyl. In-Line, OHV | 6 cyl. In-Line, OHV | 6 cyl. In-Line, OHV | 8 cyl. "Vee" OHV |
| Capacity | 4015 cc (245 cu. in.) | 4015 cc (245 cu. in.) | 4345 cc (265 cu. in.) | 5211 cc (318 cu. in.) |
| Compression Ratio | 7.6:1 | 9.0:1 | 9.1:1 | 8.2:1 |
| Carburettor | Two barrel with automatic choke | Two barrel with automatic choke | Two barrel with automatic choke | Two barrel with automatic choke |
| Ignition System | Electronic | Electronic | Electronic | Electronic |
| Fuel | Regular | Premium | Premium | Regular |

All product illustrations and specifications are based on authorised information. Although descriptions are believed correct at publication approval, accuracy cannot be guaranteed. Some of the equipment shown on product illustrations is optional at extra cost. Chrysler Australia Limited reserves the right to make changes from time to time without notice or obligation, in prices, specifications, colours and materials, and to change or discontinue models.

