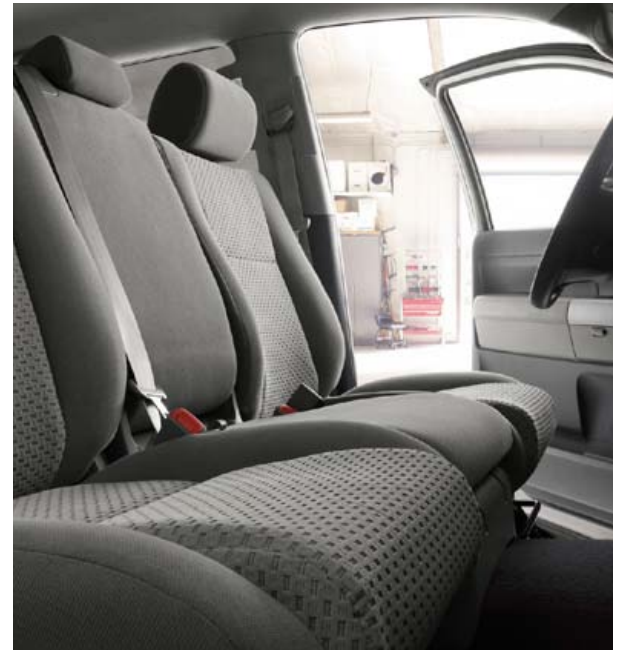




TUNDRA

2013



4x4 CrewMax Tundra Grade shown in Magnetic Gray Metallic with available 5.7L V8, 18-in. alloy wheels and Convenience Package.

Double Cab interior shown in Graphite.

Seven. That's the number of years in a row J.D. Power and Associates¹ has named Tundra the "most dependable large pickup." That number is even more impressive considering how hard Tundra works. Select models are capable of towing² at least five tons with the available 5.7L V8. And equipped with either the 270-hp 4.0L V6 or the 310-hp 4.6L V8, Tundra gets an EPA-estimated 20 mpg highway rating.³ Further proof that when it comes to work, this truck means business. **2013 Toyota Tundra.**

TOP STANDARD FEATURES⁴

- Available 5.7L V8 with 381 hp tows over 10,000 lbs.²
- Trailer-Sway Control (TSC)⁵
- Easy lower and lift tailgate
- Dual zone air conditioning with individual temperature settings for driver and front passenger
- Automatic Limited-Slip Differential (Auto LSD)
- Star Safety System™ — includes Vehicle Stability Control (VSC)⁶ Traction Control (TRAC), Anti-lock Brake System (ABS), Electronic Brake-force Distribution (EBD), Brake Assist (BA)⁷ and Smart Stop Technology (SST)⁸

1. The Toyota Tundra received the lowest number of problems per 100 vehicles among large pickups in the proprietary J.D. Power and Associates 2006-2012 Vehicle Dependability StudiesSM 2012 study based on 31,325 consumer responses measuring problems consumers experienced in the past 12 months with three-year-old vehicles (2009 model year cars and trucks). Proprietary study results are based on experiences and perceptions of consumers surveyed October-December 2010. Your experiences may vary. Visit jdpower.com **2.** See footnote 27 in Disclosures section. **3.** See footnote 29 in Disclosures section. **4.** See footnote 13 in Disclosures section. **5.** See footnote 23 in Disclosures section. **6.** See footnote 18 in Disclosures section. **7.** See footnote 19 in Disclosures section. **8.** See footnote 20 in Disclosures section.

TUNDRA CAB CHOICES

CREWMAX MANPOWER MEETS HORSEPOWER.

- Short Bed (5.5 ft.) configuration
- Available in two engine sizes: 4.6L V8 and 5.7L V8
- 4x2 5.7L V8 features payload capacity up to 1445 lb¹
- 4x2 4.6L V8 rated for 1365-lb. maximum payload¹
- 4x2 5.7L V8 features towing capacity up to 9900 lb. when properly equipped²



DOUBLE CAB VERSATILITY NEVER WORKED HARDER.

- Available in Standard Bed (6.5 ft.) or Long Bed (8.1 ft.) configurations
- Available in three engine sizes: 4.0L V6, 4.6L V8 and 5.7L V8
- 4x2 5.7L V8 Standard Bed features payload capacity up to 1540 lb¹
- 4x2 4.6L V8 Standard Bed rated for 1410-lb. maximum payload¹
- 4x2 5.7L V8 Standard Bed features towing capacity up to 10,100 lb. when properly equipped²
- V6 Standard Bed offers maximum towing capacity up to 4500 lb²



Available with Standard or Long Beds.

REGULAR CAB REGULAR IN NAME ONLY.

- Available in Standard Bed (6.5 ft.) or Long Bed (8.1 ft.) configurations
- Available in three engine sizes: 4.0L V6, 4.6L V8 and 5.7L V8
- 4x2 5.7L V8 Long Bed features payload capacity up to 1885 lb. when properly equipped¹
- 4x2 4.6L V8 Standard Bed rated for 1635-lb. maximum payload¹
- 4x2 5.7L V8 Long Bed features standard towing capacity up to 10,400 lb²
- V6 Standard Bed offers maximum towing capacity up to 4900 lb²



Available with Standard or Long Beds.

¹See footnote 26 in Disclosures section. ²See footnote 27 in Disclosures section..

GRADES AND PACKAGES

PLATINUM GRADE 4x2 and 4x4

CREWMAX | LIMITED GRADE

Includes 20-in. split 5-spoke machine-finished alloy wheels with P275/55R20 tires, heated and ventilated front bucket seats with embroidered headrests, perforated leather-trimmed seating surfaces, chrome lower front bumper, wood-grain-style interior trim, power windows with driver and front passenger auto up/down, Glass Breakage Sensor (GBS)¹, Platinum badge and 2-position memory function for driver's seat, outside mirrors and steering wheel. (Available in the following exterior colors: Black, Barcelona Red Metallic, Silver Sky Metallic, Magnetic Gray Metallic or Super White only.)



LIMITED GRADE 4x2 and 4x4

DOUBLE CAB | 5.7L V8 ENGINE

CREWMAX | 5.7L V8 ENGINE

Includes 18-in. 5-spoke alloy wheels with P275/65R18 tires, color-keyed upper and lower front bumper, chrome grille surround with matte silver billet-style inner grille, fog lights, chrome outside mirrors and door handles, Deck Rail System, backup camera² display, leather-trimmed seating surfaces with heated power front bucket seats, center-console, JBL[®] AM/FM 6-disc CD player with MP3/WMA playback capability, Bluetooth[®] and SiriusXM Radio⁴ with 90-day complimentary trial, Optitron gauges, dual zone automatic climate control and Tow Package.

Vehicle shown with available 20-in. 5-spoke alloy wheels.



TRD ROCK WARRIOR PACKAGE 4x4 only

DOUBLE CAB | TUNDRA AND LIMITED GRADES WITH 5.7L V8 ENGINE

CREWMAX | TUNDRA AND LIMITED GRADES WITH 5.7L V8 ENGINE

Tundra Grade includes 17-in. split 6-spoke gunmetal-color-finished TRD Rock Warrior forged alloy wheels with LT285/70R17 BFGoodrich[®] All-Terrain T/A tires, Bilstein[®] shock absorbers, fuel tank skid plates, color-keyed front bumper and grille surround, matte black rear bumper, fog lights, sliding rear window with privacy glass (Double Cab only), front bucket seats with 8-way adjustable driver's seat with power lumbar support, 4-way adjustable front passenger seat and black fabric-trimmed seating surfaces and TRD Rock Warrior graphics. Requires auto-dimming rearview mirror with integrated backup camera⁴ display, compass and HomeLink[®] universal transceiver. Integrated backup camera⁴ display included in either rearview mirror or available Display Navigation⁶ with Entune[®] Replaces standard equipment column shifter with center-console gated shift lever. Limited Grade includes 17-in. split 6-spoke gunmetal-color-finished TRD Rock Warrior forged alloy wheels with LT285/70R17 BFGoodrich[®] All-Terrain T/A tires, Bilstein[®] shock absorbers, fuel tank skid plates and TRD Rock Warrior graphics. (Available in the following exterior colors: Black, Radiant Red, Magnetic Gray Metallic and Super White only.)



TRD OFF-ROAD PACKAGE 4x2 and 4x4

REGULAR CAB | TUNDRA GRADE WITH V8 ENGINES

DOUBLE CAB | TUNDRA AND LIMITED GRADES WITH V8 ENGINES

CREWMAX | TUNDRA AND LIMITED GRADES WITH V8 ENGINES

Includes 18-in. 5-spoke TRD Off-Road alloy wheels with P275/65R18 BFGoodrich[®] tires, off-road-tuned suspension, Bilstein[®] shock absorbers, sliding rear window with privacy glass (Regular Cab models only), engine (4x2 models only) and fuel tank skid plates, front tow hooks (4x2 models only), TRD Off-Road Package graphics. (Regular Cab includes SR5 Upgrade Package equipment. Replaces standard equipment column shifter with center-console gated shift lever.)



¹See footnote 31 in Disclosures section. ²See footnote 7 in Disclosures section. ³See footnote 4 in Disclosures section. ⁴See footnote 1 in Disclosures section. ⁵See footnote 11 in Disclosures section. ⁶See footnote 5 in Disclosures section. ⁷See footnote 6 in Disclosures section.

GRADES AND PACKAGES

TRD SPORT PACKAGE ^{4x2 only}

DOUBLE CAB | TUNDRA GRADE WITH 5.7L V8 ENGINE

Includes 20-in. 5-spoke TRD Sport alloy wheels with P275/55R20 tires, color-keyed front and rear bumpers and grille surround, color-keyed door handles, fog lights, front bucket seats with 8-way adjustable driver's seat with power lumbar support, 4-way adjustable front passenger seat and black fabric-trimmed seating surfaces seats and TRD Sport graphics. Replaces standard equipment column shifter with center-console gated shift lever. (Available in the following exterior colors: Black or Radiant Red only.)
Vehicle shown with additional TRD accessories.



CHROME APPEARANCE PACKAGE ^{4x2 and 4x4}

DOUBLE CAB | V8 ENGINES

CREWMAX | V8 ENGINES

Includes 18-in. chrome-clad steel wheels with P255/70R18 tires, chrome front door handles (CrewMax includes chrome rear door handles), chrome heated power outside mirrors and chrome exhaust tip. Requires 18-in. chrome-clad steel wheels with P255/70R18 tires, 18-in. 5-spoke alloy wheels with P275/65R18 tires, or 20-in. machined star 5-spoke alloy wheels with P275/55R20 tires!



TUNDRA GRADE ^{4x2 and 4x4}

REGULAR CAB | V6 OR V8 ENGINES²

DOUBLE CAB | V6 OR V8 ENGINES

CREWMAX | V8 ENGINES

Includes 18-in. Tundra Grade styled steel wheels with P255/70R18 tires, color-keyed upper and chrome lower front bumper with chrome grille surround and rear bumper, fabric-trimmed 40/20/40 split fold-down front bench seat with 8-way adjustable (4-way in Regular Cab) driver's seat and 4-way adjustable front passenger bench seat, dual zone air conditioning, power windows and door locks, variable intermittent windshield wipers, fabric interior and carpet flooring. (Double Cab and CrewMax include remote keyless entry system.)



WORK TRUCK PACKAGE ^{4x2 and 4x4}

REGULAR CAB | TUNDRA GRADE WITH V6 OR V8 ENGINES²

DOUBLE CAB | TUNDRA GRADE WITH V6 OR V8 ENGINES

Includes matte black upper and lower front bumper with matte black grille surround, heavy-duty vinyl-trimmed bench seat, heavy-duty all-weather flooring, black instrument panel and 2-speed windshield wipers. Cruise control available. Remote keyless entry, outside temperature gauge and courtesy lights and foot lights not included. Tachometer, voltmeter, engine oil temperature gauges not available with V6. 4-way driver's seat instead of 8-way on Double Cab. Manual windows/door locks/outside mirrors on Regular Cab only.



¹See footnote 24 in Disclosures section. ²Standard Bed not available with 5.7L V8.

OPTIONS AND PACKAGES

OPTIONS

	REGULAR	DOUBLE		CREWMAX		
	TUNDRA	TUNDRA	LIMITED	TUNDRA	LIMITED	PLATINUM
For wheel options, see descriptions on page 29.	O	O	O	O	O	S
Tow Package — Includes towing receiver hitch, trailer brake controller prewire, 4.300 rear axle ratio (4.100 on 4.6L V8), TOW/HAUL mode switch, transmission fluid temperature gauge, supplemental engine cooler, supplemental transmission cooler, heavy-duty battery, 170-amp alternator and 7-pin connector (V8 models only)	S	P	S	P	S	S
Deck Rail System with four adjustable tie-down cleats	O	O	S	O	S	S
AM/FM CD player with MP3/WMA playback capability, six speakers (four in Regular Cab), SiriusXM Radio ¹ with 90-day complimentary trial, auxiliary audio jack, USB port ² with iPod ^{®3} connectivity, hands-free phone capability and music streaming via Bluetooth ^{®4} wireless technology	O	O	—	O	—	—
Display Navigation ⁵ with Entune ^{®6} includes 6.1-in. high-resolution touch-screen with split-screen capability and integrated backup camera ⁷ display, AM/FM CD player with MP3/WMA playback capability, six speakers, SiriusXM Radio ¹ compatibility (additional hardware and subscription required), HD Radio ^{™8} with iTunes [®] Tagging ⁹ , auxiliary audio jack, USB port ² with iPod ^{®3} connectivity and control, hands-free phone capability, phone book access, advanced voice recognition, and music streaming via Bluetooth ^{®4} wireless technology	—	O	—	O	—	—
Voice-activated touch-screen DVD navigation system ⁵ includes 7-in. high-resolution touch-screen with integrated backup camera ⁷ display, JBL [®] AM/FM 4-disc CD changer with MP3/WMA playback capability, twelve speakers including subwoofer (ten on Double Cab), SiriusXM Radio with NavTraffic ^{™11} with 90-day complimentary trial, auxiliary audio jack, USB port ² with iPod ^{®3} connectivity, and hands-free phone capability and music streaming via Bluetooth ^{®4} wireless technology	—	—	O	—	O	S
Rear-seat DVD entertainment system with 9-in. display, RCA jacks, 115V AC power outlet, remote and two wireless headphones ¹⁰	—	—	—	—	O	O
Auto-dimming rearview mirror with integrated backup camera ⁷ display, compass and HomeLink ^{®11} universal transceiver	O	P	S	P	S	S
Anti-theft system with alarm and engine immobilizer ¹² (V8 models only)	O	O	S	O	S	S
Front and rear parking assist sonar	O	O	S	O	S	S
Heated power outside tow mirrors with turn signal indicators and manual-extend feature (5.7L V8 models only)	O	O	—	O	—	—
Heated power outside tow mirrors with turn signal indicators, and power-folding and manual-extend features	—	—	O	—	O	S
Sliding rear window with privacy glass	O/P	P	—	—	—	—
Running boards (V8 Standard and Short Bed models only)	—	O	O	O	O	O
Power tilt/slide moonroof with sliding sunshade (deletes overhead console with sunglasses storage)	—	—	—	O	O	S

For more information about our available audio systems, as well as Bluetooth^{®4}-compatible features, please contact your local Toyota dealer.

PACKAGES

LIMITED GRADE

	DOUBLE CAB	CREWMAX
TRD ROCK WARRIOR PACKAGE (see description on page 24)	P	P
TRD OFF-ROAD PACKAGE (see description on page 24)	P	P
MEMORY PACKAGE (also includes crewmax platinum grade) Includes 2-position memory function for driver's seat, outside mirrors and steering wheel (not available with tow mirrors, standard on Platinum)	P	P
TUNDRA GRADE		
TRD ROCK WARRIOR PACKAGE (see description on page 24)	P	P
TRD OFF-ROAD PACKAGE (see description on page 24)	P	P
TRD SPORT PACKAGE (see description on page 25)	P	—
CHROME APPEARANCE PACKAGE (see description on page 25)	P	P
SPORT APPEARANCE PACKAGE Includes color-keyed front and rear bumpers and grille surround, front bucket seats with 8-way power-adjustable driver's seat, 4-way adjustable front passenger seat, fog lights, power horizontal sliding rear window with privacy glass (not available with Tow Package)	P	—
SR5 PACKAGE Includes front bucket seats with 8-way power-adjustable driver's seat with power lumbar support, 4-way adjustable front passenger seat and SR5 fabric-trimmed seating surfaces, fog lights and SR5 badge. Requires auto-dimming rearview mirror with compass and HomeLink ^{®11} universal transceiver. Integrated backup camera ⁷ display included in either rearview mirror or available Display Navigation ⁵ with Entune. ^{®6} Double Cab includes power horizontal sliding rear window with privacy glass, under-seat storage tray and privacy glass on rear side windows. Replaces standard equipment column shifter with center-console gated shift lever	P	P
UPGRADE PACKAGE Includes front bucket seats with 8-way adjustable driver's seat with power lumbar support and 4-way adjustable front passenger seat, and fog lights. Requires auto-dimming rearview mirror with compass and HomeLink ^{®11} universal transceiver. Integrated backup camera ⁷ display included in either rearview mirror or available Display Navigation ⁵ with Entune. ^{®6} Double Cab includes sliding rear window with privacy glass, under-seat storage tray and privacy glass on rear side windows. Replaces standard equipment column shifter with center-console gated shift lever	P	P
CONVENIENCE PACKAGE Includes fog lights (Standard Bed V8 only on Double Cab). CrewMax includes auto-dimming rearview mirror with compass and HomeLink ^{®11} universal transceiver. Double Cab includes sliding rear window with privacy glass on rear side windows, and rear under-seat storage (also available with front bucket seats). Replaces standard equipment column shifter with center-console gated shift lever	P	P
WORK TRUCK PACKAGE (see description on page 25)	P	—

	REGULAR CAB
TRD OFF-ROAD PACKAGE (see description on page 24)	P
SPORT APPEARANCE PACKAGE Includes color-keyed front and rear bumpers and grille surround, front bucket seats with 4-way adjustable driver's seat, 4-way adjustable front passenger seat, fog lights, sliding rear window with privacy glass, and power windows/door locks/outside mirrors, cruise control, remote keyless entry system, variable intermittent windshield wipers and carpet flooring (deletes standard tow equipment)	P
SR5 UPGRADE PACKAGE Includes front bucket seats with 4-way adjustable driver's seat, 4-way adjustable front passenger seat and SR5 fabric-trimmed seating surfaces, sliding rear window with privacy glass, power windows/door locks/outside mirrors, cruise control, remote keyless entry system, variable intermittent windshield wipers, carpet flooring and SR5 badge. Replaces standard equipment column shifter with center-console gated shift lever	P
SR5 PACKAGE Includes power windows/doors/locks/outside mirrors, cruise control, remote keyless entry system, variable intermittent windshield wipers, carpet flooring, SR5 fabric-trimmed seating surfaces, front passenger fold-flat seat and SR5 badge	P
WORK TRUCK PACKAGE (see description on page 25)	P

FEATURES

EXTERIOR

	REGULAR			DOUBLE		CREWMAX	
	TUNDRA	TUNDRA	LIMITED	TUNDRA	LIMITED	PLATINUM	
Multi-reflector halogen headlights with manual level control	S	S	S	S	S	S	
Daytime Running Lights (DRL)	S	S	S	S	S	S	
Fog lights (V8 Standard and Short Bed models only)	P	P	S	P	S	S	
Matte black upper and lower front bumper with matte black grille surround	P	P	—	—	—	—	
Color-keyed upper and chrome lower front bumper with chrome grille surround	S	S	—	S	—	—	
Color-keyed front bumper with chrome grille surround and matte silver billet-style grille insert	—	—	S	—	S	—	
Color-keyed upper and chrome lower front bumper with chrome grille surround and matte silver billet-style grille insert	—	—	—	—	—	S	
Chrome rear bumper	S	S	S	S	S	S	
Deck Rail System with four adjustable tie-down cleats	O	O	S	O	S	S	
Deck rail and tailgate caps	S	S	S	S	S	S	
Heated power outside mirrors	S	S	—	S	—	—	
Chrome heated power and auto-dimming outside mirrors with turn signal indicators, power-folding and memory feature	—	—	S	—	S	S	
Heated power outside tow mirrors with turn signal indicators and manual-extend feature	O	O	—	O	—	—	
Heated power outside tow mirrors with turn signal indicators and power-folding and manual-extend features	—	—	O	—	O	—	
Power tilt/slide moonroof with sliding sunshade (deletes overhead console with sunglasses storage)	—	—	—	O	O	S	
Two-speed windshield wipers	S	P	—	—	—	—	
Variable intermittent windshield wipers (not available with Work Truck Package)	P	S	S	S	S	S	
Windshield wiper de-icer	S	S	S	S	S	S	
High Solar Energy-Absorbing (HSEA) glass	S	S	S	S	S	S	
Easy lower and lift tailgate	S	S	S	S	S	S	
Running boards (V8 Standard and Short Bed models only)	—	O	O	O	O	O	
Front and rear mudguards	S	S	S	S	S	S	
Front tow hooks (V8 models only; standard on 4x4 models)	P	P	P	P	P	S	

INTERIOR

Dual zone air conditioning with individual temperature settings for driver and front passenger	S	S	—	S	—	—
Dual zone automatic climate control with individual temperature settings for driver and front passenger	—	—	S	—	S	S
AM/FM CD player with MP3/WMA playback capability, six speakers (four in Regular Cab), SiriusXM Radio ¹ compatibility (additional hardware and subscription required) and auxiliary audio jack	S	S	—	S	—	—
AM/FM CD player with MP3/WMA playback capability, six speakers (four on Regular Cab), SiriusXM Radio ¹ with 90-day complimentary trial, auxiliary audio jack, USB port ² with iPod ^{®3} connectivity and hands-free phone capability and music streaming via Bluetooth ^{®4} wireless technology	O	O	—	O	—	—
Display Navigation ⁵ with Entune ^{®6} includes 6.1-in. high-resolution touch-screen with split-screen capability and integrated backup camera ⁷ display, AM/FM CD player with MP3/WMA playback capability, six speakers, SiriusXM Radio ¹ compatibility (additional hardware and subscription required), HD Radio ^{™8} with iTunes ^{®9} Tagging, ⁹ auxiliary audio jack, USB port ² with iPod ^{®3} connectivity and control, hands-free phone capability, phone book access, advanced voice recognition, and music streaming via Bluetooth ^{®4} wireless technology	—	O	—	O	—	—
JBL [®] AM/FM 6-disc CD changer with MP3/WMA playback capability, 12 speakers including subwoofer (ten on Double Cab), SiriusXM Radio ¹ with 90-day complimentary trial, auxiliary audio jack, USB port ² with iPod ^{®3} connectivity, hands-free phone capability and music streaming via Bluetooth ^{®4} wireless technology	—	—	S	—	S	—
Voice-activated touch-screen DVD navigation system ⁵ includes 7-in. high-resolution touch-screen with integrated backup camera ⁷ display, JBL [®] AM/FM 4-disc CD changer with MP3/WMA playback capability, twelve speakers including subwoofer (ten on Double Cab), SiriusXM Radio with NavTraffic ^{™11} with 90-day complimentary trial, auxiliary audio jack, USB port ² with iPod ^{®3} connectivity, and hands-free phone capability and music streaming via Bluetooth ^{®4} wireless technology	—	—	O	—	O	S
Entune [®] — includes Bing [™] , iHeartRadio, MovieTickets.com, OpenTable [®] and Pandora [®] ; real-time info including traffic, weather, fuel prices, sports and stocks. Access to Entune [®] services is complimentary for three years. See toyota.com/entune for details.	—	O	—	O	—	—
Rear-seat DVD entertainment system with 9-in. display, RCA jacks, 115V AC power outlet, remote and two wireless headphones ¹⁰	—	—	—	—	O	O
Fabric-trimmed 40/20/40 split fold-down front bench seat; 8-way adjustable (4-way on Regular Cab) driver's seat; 4-way adjustable front passenger seat	S	S	—	S	—	—
Fabric-trimmed front bucket seats; 8-way adjustable (4-way on Regular Cab) driver's seat; 4-way adjustable front passenger seat	O	O	—	O	—	—
Fabric-trimmed front bucket seats; 8-way power-adjustable driver's seat with power lumbar support; 4-way adjustable front passenger seat	—	O	—	O	—	—
Leather-trimmed and heated front bucket seats; 10-way power-adjustable driver's seat with power thigh and lumbar support; 4-way power-adjustable front passenger seat with power lumbar support	—	—	S	—	S	—
Perforated leather-trimmed and heated front bucket seats; 10-way power-adjustable driver's seat with power thigh and lumbar support; 4-way power-adjustable front passenger seat with power lumbar support	—	—	—	—	—	S
Fabric-trimmed 60/40 split, fold-up rear seat	—	S	—	—	—	—
Fabric-trimmed 60/40 split, sliding, reclining, fold-flat rear seat	—	—	—	S	—	—
Leather-trimmed 60/40 split, fold-up rear seat	—	—	S	—	—	—
Leather-trimmed 60/40 split, sliding, reclining, fold-flat rear seat	—	—	—	—	S	—
Perforated leather-trimmed 60/40 split, sliding, reclining, fold-flat rear seat	—	—	—	—	—	S
Heavy-duty all-weather flooring	S	P	—	—	—	—
Carpet flooring	P	S	S	S	S	S
Cruise control	P	S	S	S	S	S

See numbered footnotes in Disclosures section.

S = Standard O = Optional — = Not available P = Available as part of a package

INTERIOR (CONTINUED)	REGULAR		DOUBLE		CREWMAX	
	TUNDRA	TUNDRA	LIMITED	TUNDRA	LIMITED	PLATINUM
Analog instrumentation with color-illuminated speedometer, coolant temperature and fuel gauges; LCD display with odometer and tripmeters; shift-position indicator	S ¹⁴	S ¹⁵	—	S	—	—
Analog instrumentation with color-illuminated speedometer, tachometer, voltmeter, coolant temperature, automatic transmission fluid, fuel and engine oil temperature gauges; LCD display with odometer and tripmeters; shift-position indicator	S ¹⁶	S ¹⁷ /P	—	P	—	—
Optitron instrumentation with color-illuminated speedometer, tachometer, voltmeter, coolant temperature, automatic transmission fluid, fuel and engine oil temperature gauges; LCD Multi-Information Display with customizable settings, odometer, tripmeter, instant/average fuel economy, distance to empty, average speed, trip timer; shift-position indicator and warning messages	—	—	S	—	S	S
Power windows with driver-side one-touch auto down and power door locks with shift-linked automatic lock/unlock feature (not available with Work Truck Package)	S	—	—	—	—	—
Power windows with driver-side one-touch auto down, power door locks with shift-linked automatic lock/unlock feature and remote keyless entry system with lock, unlock and panic functions (not available with Work Truck Package)	P	S	—	S	—	—
Power windows with driver and front passenger one-touch auto up/down, power door locks with shift-linked automatic lock/unlock feature and programmable auto door lock logic, and remote keyless entry system with lock, unlock and panic functions	—	—	S	—	S	S
Sliding rear window with privacy glass	O/P	P	—	—	—	—
Power horizontal sliding rear window with privacy glass	—	P	S	—	—	—
Power vertical sliding rear window with defogger and privacy glass	—	—	—	S	S	S
Auto-dimming rearview mirror with compass and HomeLink ^{®21} universal transceiver	—	—	O	—	O/P	—
Auto-dimming rearview mirror with integrated backup camera ⁷ display, compass, maplights and HomeLink ^{®21} universal transceiver	O	P	S	P	S	S
Overhead console with sunglasses storage	—	P	S	S	S	S
Fixed center-console with covered storage compartment, removable utility tray, 12V auxiliary power outlet and hanging file folder storage (front bucket seats only)	P	P	S	—	—	—
Fixed center-console with covered storage compartment, removable utility tray, 12V auxiliary power outlet, hanging file folder storage and second-row vents (front bucket seats only)	—	—	—	P	S	S
Rear under-seat storage compartment	—	P	—	—	—	—
Two front 12V auxiliary power outlets (additional rear 12V auxiliary power outlet on Double Cab and CrewMax)	S	S	S	S	S	S
Front maplight (additional rear maplight on Double Cab and CrewMax)	P	S	S	S	S	S
Four front cup holders (three on Limited Grade), four front bottle holders	S	S	S	S	S	S
SAFETY AND CONVENIENCE						
STAR SAFETY SYSTEM ™ Star Safety System™ — includes Vehicle Stability Control (VSC) ¹⁸ Traction Control (TRAC), Anti-lock Brake System (ABS), Electronic Brake-force Distribution (EBD), Brake Assist (BA) ¹⁹ and Smart Stop Technology (SST) ²⁰	S	S	S	S	S	S
Driver and front outboard passenger airbags with Advanced Airbag System ¹⁷	S	S	S	S	S	S
Driver and front outboard passenger seat-mounted side airbags, driver and front passenger knee airbags and front and rear Roll-sensing Side Curtain Airbags (RSCA) ²¹	S	S	S	S	S	S
3-point seatbelts in all seating positions; driver-side Emergency Locking Retractor (ELR) and Automatic/Emergency Locking Retractor (ALR/ELR) on all passenger seatbelts	S	S	S	S	S	S
Driver and front passenger seatbelt pretensioners with force limiters	S	S	S	S	S	S
LATCH (Lower Anchors and Tethers for CHildren) includes lower anchors on outboard passenger seat and tether anchor on center seat	S	—	—	—	—	—
LATCH (Lower Anchors and Tethers for CHildren) includes lower anchors on outboard rear seats and tether anchor on rear center seat	—	S	S	S	S	S
Child-protector rear door locks	—	S	S	S	S	S
Tire Pressure Monitor System (TPMS) ²²	S	S	S	S	S	S
Front and rear parking assist sonar	O	O	S	O	S	S
Trailer-Sway Control (TSC) ²³	S	S	S	S	S	S
Anti-theft system with alarm and engine immobilizer ¹² (V8 models only)	O	O	S	O	S	S
WHEELS						
A— 18-in. Tundra Grade styled steel wheels with P255/70R18 tires	S	S	—	S	—	—
B— 20-in. machined star 5-spoke alloy wheels with P275/55R20 tires ²⁴	—	P	—	P	—	—
C— 18-in. 5-spoke alloy wheels with P275/65R18 tires	O	O	S	O	S	—
D— 20-in. 5-spoke alloy wheels with P275/55R20 tires	—	—	O	—	O	—
E— 20-in. 5-spoke TRD Sport alloy wheels with P275/55R20 tires	—	P	—	—	—	—
F— 17-in. split 6-spoke gunmetal-color-finished TRD Rock Warrior forged alloy wheels with LT285/70R17 BFGoodrich [®] All-Terrain T/A tires	—	P	—	P	P	—
G— 18-in. 5-spoke TRD Off-Road alloy wheels with P275/65R18 BFGoodrich [®] tires (V8 only)	P	P	P	P	P	—
H— 20-in. Platinum Grade split 5-spoke machine-finished alloy wheels with P275/55R20 tires	—	—	—	—	—	S



See numbered footnotes in Disclosures section.

SPECIFICATIONS

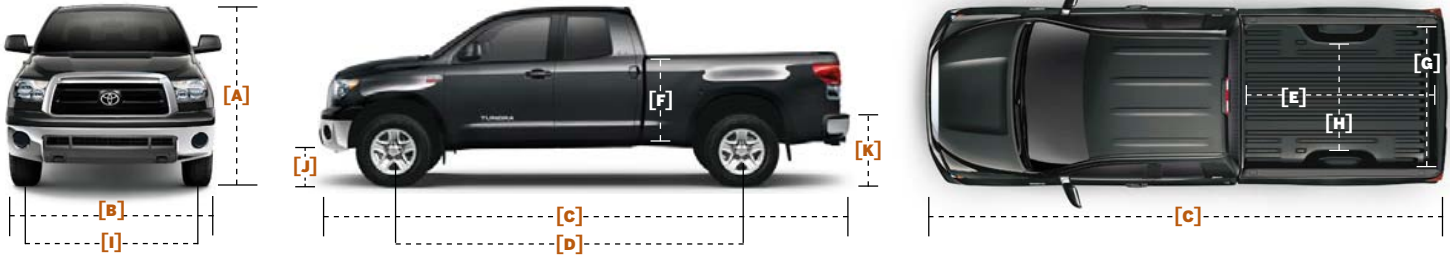
MECHANICAL

	REGULAR		DOUBLE		CREWMAX	
	4x2	4x4	4x2	4x4	4x2	4x4
ENGINE						
4.0-Liter aluminum V6 DOHC 24-Valve with Dual Independent Variable Valve Timing with intelligence (VVT-i); 270 hp @ 5600 rpm; 278 lb.-ft. @ 4400 rpm	S	—	S	—	—	—
4.6-Liter aluminum i-FORCE V8 DOHC 32-Valve with Dual Independent Variable Valve Timing with intelligence (VVT-i); 310 hp @ 5600 rpm; 327 lb.-ft. @ 3400 rpm	O ¹⁵	—	O	S	S	S
5.7-Liter aluminum i-FORCE V8 DOHC 32-Valve with Dual Independent Variable Valve Timing with intelligence (VVT-i); 381 hp @ 5600 rpm; 401 lb.-ft. @ 3600 rpm	O ¹⁷	S	O	O	O	O
5.7-Liter aluminum i-FORCE V8 DOHC E85 Flex Fuel ²⁵ 32-Valve with Dual Independent Variable Valve Timing with intelligence (VVT-i); 381 hp @ 5600 rpm; 401 lb.-ft. @ 3600 rpm	—	O	—	O	—	O
BATTERY						
Heavy-duty battery and starter	S	S	S	S	S	S
EMISSION RATING						
Low Emission Vehicle II (LEV-II) (V6 models only)	S	—	S	—	—	—
Ultra Low Emission Vehicle II (ULEV-II) (V8 models only)	O	S	O	S	S	S
TRANSMISSION						
5-speed Electronically Controlled automatic Transmission with intelligence (ECT-i), sequential shift mode and uphill/downhill shift logic (V6 models)	S	—	S	—	—	—
6-speed Electronically Controlled automatic Transmission with intelligence (ECT-i), sequential shift mode and uphill/downhill shift logic, TOW/HAUL mode (4.6L and 5.7L V8 models with Tow Package)	O	S	O	S	S	S
DRIVETRAIN						
Rear-Wheel Drive with Automatic Limited-Slip Differential (Auto LSD)	S	—	S	—	S	—
4WDemand part-time 4WD with electronically controlled transfer case, Active Traction Control (A-TRAC) and Automatic Limited-Slip Differential (Auto LSD)	—	S	—	S	—	S
RATIOS 4.0L V6						
1st gear	3.520	—	3.520	—	—	—
2nd gear	2.042	—	2.042	—	—	—
3rd gear	1.400	—	1.400	—	—	—
4th gear	1.000	—	1.000	—	—	—
5th gear	0.716	—	0.716	—	—	—
6th gear	—	—	—	—	—	—
Reverse	3.224	—	3.224	—	—	—
Rear differential ratio/ring gear size (in.)	3.909/9.5	—	3.909/9.5	—	—	—
RATIOS 4.6L V8						
1st gear	3.520	—	3.520	3.520	3.520	3.520
2nd gear	2.042	—	2.042	2.042	2.042	2.042
3rd gear	1.400	—	1.400	1.400	1.400	1.400
4th gear	1.000	—	1.000	1.000	1.000	1.000
5th gear	0.716	—	0.716	0.716	0.716	0.716
6th gear	0.586	—	0.586	0.586	0.586	0.586
Reverse	3.224	—	3.224	3.224	3.224	3.224
Rear differential ratio/ring gear size (in.)	4.100/9.5	—	3.909/9.5	3.909/9.5	3.909/9.5	3.909/9.5
Rear differential with Tow Package (Standard on Regular Cab)	4.100	—	4.100	4.100	4.100	4.100
4WD transfer case (high/low)	—	—	—	1.000/2.618	—	1.000/2.618
RATIOS 5.7L V8						
1st gear	3.333	3.333	3.333	3.333	3.333	3.333
2nd gear	1.960	1.960	1.960	1.960	1.960	1.960
3rd gear	1.353	1.353	1.353	1.353	1.353	1.353
4th gear	1.000	1.000	1.000	1.000	1.000	1.000
5th gear	0.728	0.728	0.728	0.728	0.728	0.728
6th gear	0.588	0.588	0.588	0.588	0.588	0.588
Reverse	3.061	3.061	3.061	3.061	3.061	3.061
Rear differential ratio/ring gear size (in.)	4.300/10.5	4.300/10.5	4.100/10.5	4.100/10.5	4.100/10.5	4.100/10.5
Rear differential with Tow Package (Standard on Regular Cab)	4.300	4.300	4.300	4.300	4.300	4.300
4WD transfer case (high/low)	—	1.000/2.618	—	1.000/2.618	—	1.000/2.618
SUSPENSION						
Independent coil-spring high-mounted double-wishbone front suspension with stabilizer bar and low-pressure nitrogen gas-filled shock absorbers; live axle with trapezoidal multi-leaf rear suspension with staggered outboard-mounted low-pressure nitrogen gas-filled shock absorbers	S	S	S	S	S	S
STEERING						
Hydraulic power rack-and-pinion	S	S	S	S	S	S
Steering wheel turns (lock-to-lock)	3.71	3.71	3.71	3.71	3.71	3.71
Turning circle diameter, curb to curb (ft.) (Standard Bed/Long Bed) (Short Bed on CrewMax)	39.2/44.0	39.2/44.0	44.0/49.0	44.0/49.0	44.0	44.0
BRAKES						
Power-assisted ventilated 13.9-in. front disc brakes; ventilated 13.6-in. rear disc brakes and Star Safety System™	S	S	S	S	S	S

SPECIFICATIONS (CONTINUED)

DIMENSIONS

	REGULAR		DOUBLE		CREWMAX	
	4x2	4x4	4x2	4x4	4x2	4x4
EXTERIOR DIMENSIONS (in.)						
A — Overall height	75.8	76.2	75.8	76.2	75.6	76.0
B — Overall width	79.9	79.9	79.9	79.9	79.9	79.9
C — Overall length (Standard Bed/Long Bed) (Short Bed on CrewMax)	209.8/228.7	209.8/228.7	228.7/246.7	228.7/246.7	228.7	228.7
D — Wheelbase (Standard Bed/Long Bed) (Short Bed on CrewMax)	126.8/145.7	126.8/145.7	145.7/164.6	145.7/164.6	145.7	145.7
E — Inside bed length (Standard Bed/Long Bed) (Short Bed on CrewMax)	78.7/97.6	78.7/97.6	78.7/97.6	78.7/97.6	66.7	66.7
F — Bed height	22.2	22.2	22.2	22.2	22.2	22.2
G — Bed width at tailgate	66.4	66.4	66.4	66.4	66.4	66.4
H — Bed width between wheelwells	50.0	50.0	50.0	50.0	50.0	50.0
I — Track (front/rear)	67.9/67.9	67.9/67.9	67.9/67.9	67.9/67.9	67.9/67.9	67.9/67.9
J — Ground clearance	10.2	10.6	10.2	10.4	10.0	10.4
K — Maximum load height	35.4	35.4	34.1	34.3	33.7	33.7



INTERIOR DIMENSIONS, FRONT/REAR (in.)

Head room	40.2	40.2	40.2/38.7	40.2/38.7	40.2/38.7	40.2/38.7
Hip room	63.0	63.0	63.0/62.6	63.0/62.6	63.0/62.6	63.0/62.6
Leg room	42.5	42.5	42.5/34.7	42.5/34.7	42.5/44.5	42.5/44.5
Shoulder room	66.7	66.7	66.6/65.7	66.6/65.7	66.6/65.4	66.6/65.4

OFF-HIGHWAY

APPROACH/DEPARTURE ANGLE (degrees)

Standard Bed (5.5 ft. on CrewMax)	27/22-26	28/22-27	28/20-25	29/20-25	28/20-25	28-29/20-25
Long Bed	27-28/21-25	28/21	28/20	29/20	—	—

WEIGHTS AND CAPACITIES

CURB WEIGHT (lb.)

Tundra 4.0L V6 (Standard Bed/Long Bed)	4580/4685	—	4950/—	—	—	—
Tundra 4.6L V8 (Standard Bed) (Short Bed on CrewMax)	4730	—	5085	5385	5250	5550
Tundra 5.7L V8 (Standard Bed/Long Bed) (Short Bed on CrewMax)	—/4910	5080/5180	5155/5355	5460	5335	5625
Limited 5.7L V8 (Standard Bed) (Short Bed on CrewMax)	—	—	5180	5480	5355	5645
Platinum 5.7L V8 (Short Bed)	—	—	—	—	5355	5645

GVWR (lb.)

Tundra 4.0L V6 (Standard Bed/Long Bed)	6200/6400	—	6400/—	—	—	—
Tundra 4.6L V8 (Standard Bed) (Short Bed on CrewMax)	6600	—	6700	6900	6800	7000
Tundra 5.7L V8 (Standard Bed/Long Bed) (Short Bed on CrewMax)	—/7000	6800/7200	6900/7000	7100/7200	7000	7200
Limited 5.7L V8 (Standard Bed) (Short Bed on CrewMax)	—	—	6900	7100	7000	7200
Platinum 5.7L V8 (Short Bed)	—	—	—	—	7000	7200

PAYLOAD²⁶ WITHOUT/WITH TOW PACKAGE (lb.)

Tundra 4.0L V6 (Standard Bed)	1485/—	—	1325/—	—	—	—
Tundra 4.0L V6 (Long Bed)	1580/—	—	—	—	—	—
Tundra 4.6L V8 (Standard Bed) (Short Bed on CrewMax)	—/1635	—	1410/1335	1330/1255	1365/1330	1285/1250
Tundra 5.7L V8 (Standard Bed) (Short Bed on CrewMax)	—	—/1520	1540/1465	1455/1380	1455/1370	1410/1375
Tundra 5.7L V8 (Long Bed)	—/1885	—/1820	—/1455	—/1360	—	—
Limited 5.7L V8 (Standard Bed) (Short Bed on CrewMax)	—	—	—/1495	—/1410	—/1420	—/1330
Platinum 5.7L V8 (Short Bed)	—	—	—	—	—/1385	—/1295

FUEL TANK (gal.)

	26.4	26.4	26.4	26.4	26.4	26.4
--	------	------	------	------	------	------

SEATING CAPACITY

	3	3	6	6	6	6
--	---	---	---	---	---	---

TOWING²⁷ MAXIMUM (lb.) (SAE J2807 towing rating-compliant)

Tundra 4.0L V6 (Standard Bed/Long Bed)	4900/4800	—	4500	—	—	—
Tundra 4.6L V8 (Standard Bed) (Short Bed on CrewMax)	8600	—	8200 ²⁸	7900 ²⁸	8100 ²⁸	7700 ²⁸
Tundra 5.7L V8 (Standard Bed/Long Bed) (Short Bed on CrewMax)	—/10,400	9200/10,100	10,100 ²⁹ /10,000	9700 ²⁹ /9800	9900 ²⁸	9000 ²⁸
Limited 5.7L V8 (Standard Bed) (Short Bed on CrewMax)	—	—	10,000	9800	9300	9000
Platinum 5.7L V8 (Short Bed)	—	—	—	—	9300	9000

TIRES

TYPE

All-Season	S	S	S	S	S	S
------------	---	---	---	---	---	---

SPARE

Spare — Full-size mounted under body	S	S	S	S	S	S
--------------------------------------	---	---	---	---	---	---

MILEAGE ESTIMATES (mpg city/highway/combined)²⁹

4.0L V6	16/20/17	—	16/20/17	—	—	—
4.6L V8	15/20/17	—	15/20/17	14/19/16	15/20/17	14/19/16
5.7L V8	13/18/15	13/17/15	13/18/15	13/17/15	13/18/15	13/17/15

EXTERIOR COLORS



Black^{1,2,3}



Nautical Blue Metallic



Spruce Mica



Pyrite Mica



Barcelona Red Metallic¹



Radiant Red^{2,3}



Magnetic Gray Metallic^{1,3}



Silver Sky Metallic¹



Super White^{1,3}

Not all colors and trims are available on all models and packages. For more on interior and exterior color availability, go to toyota.com and click "Build Your Toyota" or visit your local Toyota dealer.

¹Platinum Grade available with Black, Barcelona Red Metallic, Magnetic Gray Metallic, Silver Sky Metallic or Super White only. ²TRD Sport Package available with Black or Radiant Red only. ³TRD Rock Warrior Package available with Black, Radiant Red, Magnetic Gray Metallic or Super White only.

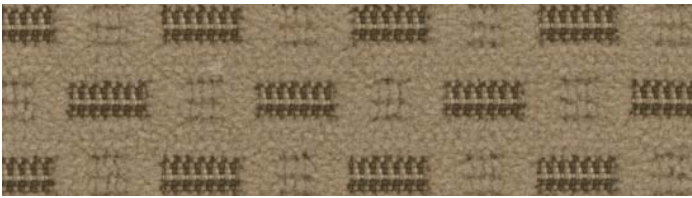
INTERIOR COLORS



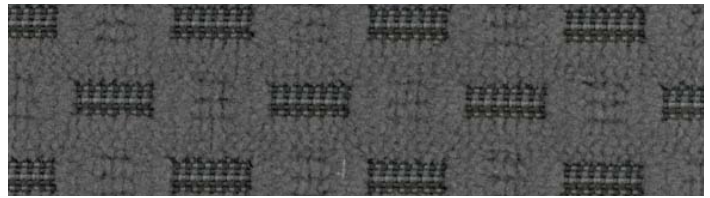
Graphite Vinyl¹



Graphite Fabric



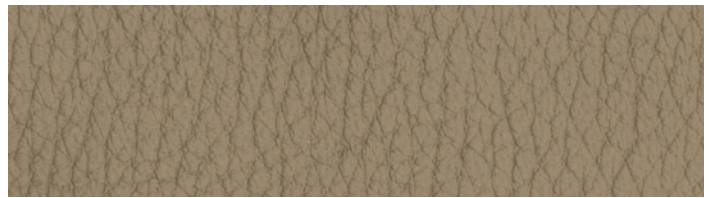
Sand Beige Fabric SR5 Package²



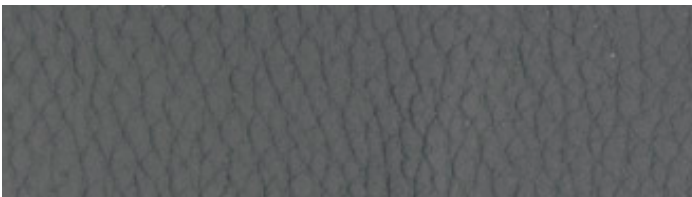
Graphite Fabric SR5 Package



Black Fabric SR5 Package



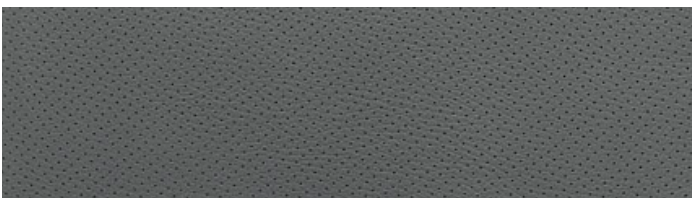
Sand Beige Leather²



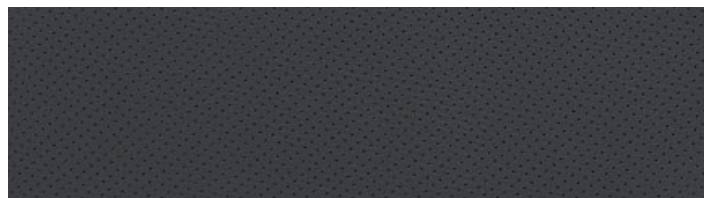
Graphite Leather



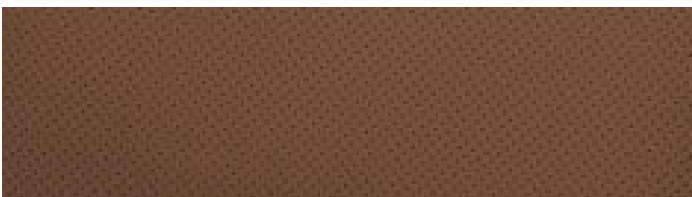
Red Rock Leather³



Perforated Graphite Leather⁴



Perforated Black Leather⁴



Perforated Red Rock Leather⁵

¹Available with Work Truck Package only. ²Not available with Magnetic Gray Metallic or Silver Sky Metallic. ³Not available with Barcelona Red Metallic or Radiant Red. ⁴Available with Platinum Grade on Black, Barcelona Red Metallic, Magnetic Gray Metallic, Silver Sky Metallic or Super White only. ⁵Available with Platinum Grade on Black, Magnetic Gray Metallic, Silver Sky Metallic or Super White.

GENUINE TOYOTA ACCESSORIES

You own it. But there are a few things you might want to do before it's really yours. Maybe it needs different wheels, tube steps, tie-downs, cross bars or a trailer brake controller for doing stuff that only matters to you. Whatever it is, ask your sales associate to see the 2013 Tundra Accessories brochure, a soup-to-nuts catalog of Genuine Toyota Accessories designed to give your Tundra the finishing touches that make it unmistakably yours. For a complete list of accessories, go to toyota.com/tundra

EXTERIOR

20-in. machined star 5-spoke alloy wheels²⁴
 Brushed stainless steel step boards
 Doorsill protectors
 Exhaust tip
 Front skid plate
 Hood protector
 Paint protection film
 Tire wiring harness
 Tube steps (black or polished stainless steel)

TOWING²⁷

Ball mount
 Towing receiver hitch
 Trailer ball

INTERIOR

All-weather floor mats³⁰
 Carpet floor mats³⁰
 Emergency assistance kit
 First aid kit
 Remote Engine Starter
 Seatback cargo net³¹
 SiriusXM Radio¹
 Under-seat storage
 Wireless headphones¹⁰

BED

Bed extender³¹
 Bed mat³¹
 Bed step
 Cargo divider³¹
 Cargo net³¹
 Deck Rail System
 Locking fork bike rack³¹
 Mini tie-downs with hooks^{31,32}
 Skid Resistor™ bedliner³¹
 Tie-down cleats

SECURITY

Alloy wheel locks
 Spare tire lock
 VIP Security³³

TRD PERFORMANCE

TRD 17-in. forged off-road alloy wheels
 TRD air filter
 TRD forged oil cap
 TRD high-performance brake kit
 TRD oil filter
 TRD performance air intake³⁴
 TRD performance brake pads
 TRD performance dual exhaust system
 TRD performance handling suspension kit
 TRD radiator cap
 TRD rear sway bar
 TRD shift knob
 TRD shock absorbers
 TRD supercharger³⁴

EXTERIOR



20-in. machined star 5-spoke alloy wheels²⁴



Brushed stainless steel step boards



Tube steps (black or polished stainless steel)

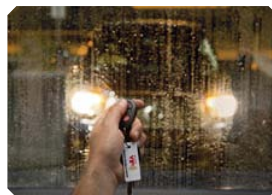


Front skid plate

INTERIOR



All-weather floor mats³⁰



Remote Engine Starter



Seatback cargo net³¹



Under-seat storage



SiriusXM Radio¹

BED



Bed extender³¹



Skid Resistor™ bedliner³¹



Bed step



Cargo divider³¹



Locking fork bike rack³¹

TRD PERFORMANCE



TRD 17-in. forged off-road alloy wheels



TRD performance air intake³⁴



TRD high-performance brake kit



TRD performance dual exhaust system



TRD supercharger³⁴

See numbered footnotes in Disclosures section.

DISCLOSURES

1. XM services require a subscription after trial period, and are sold separately or as a package. **Subscriptions governed by SiriusXM Customer Agreement; see www.siriusxm.com. If you decide to continue your XM service at the end of your complimentary trial, the plan you choose will automatically renew and bill at then-current rates until you call 1-866-635-2349 to cancel.** Fees and programming subject to change. Available only to those at least 18 years of age in the 48 contiguous United States and D.C. 2. May not be compatible with all mobile phones, MP3/WMA players and like models. 3. iPod® is a registered trademark of Apple Inc. All rights reserved. 4. The Bluetooth® word mark and logos are registered trademarks owned by Bluetooth SIG, Inc. and any use of such marks by Toyota is under license. Other trademarks and trade names are those of their respective owners. The Bluetooth® wireless technology phones listed on toyota.com have been tested for compatibility with Toyota vehicles. Performance will vary based on phone software version, coverage and your wireless carrier. Phones are warranted by their manufacturer, not Toyota. 5. Availability and accuracy of the information provided by the navigation system or any XM services mentioned (if installed) are dependent upon many factors. Use common sense when relying on information provided. Services not available in every city or roadway. Periodic navigation updates available at additional cost. See your *Navigation System Owner's Manual* or contact XM for details. 6. Be sure to obey traffic regulations and maintain awareness of road and traffic conditions. Select Entune® apps use a large amount of data and you are responsible for all data charges. Apps and services vary by phone and carrier. Apps identified by "TM" or "®" are trademarks or registered trademarks of their respective companies and cannot be used without permission. See toyota.com/entune for the latest information regarding apps and services. 7. The backup camera does not provide a comprehensive view of the rear area of the vehicle. You should also look around outside your vehicle and use your mirrors to confirm rearward clearance. Cold weather will limit effectiveness and view may become cloudy. 8. HD Radio™ Technology manufactured under license from iBiquity Digital Corporation U.S. and Foreign Patents. HD Radio™ and the HD, HD Radio, and "Arc" logos are proprietary trademarks of iBiquity Digital Corp. 9. iTunes® Tagging is a registered trademark of Apple, Inc. All rights reserved. 10. Headphones are for passenger use only. Do not use while operating vehicle. 11. HomeLink® is a registered trademark of Johnson Controls, Inc. 12. The engine immobilizer is a state-of-the-art anti-theft system. When you insert your key into the ignition switch, the key transmits an electronic code to the vehicle. The engine will only start if the code in the transponder chip inside the key matches the code in the vehicle's immobilizer. Because the transponder chip is embedded in the key, it can be costly to replace. If you lose a key, your Toyota dealer can help, or you can find a qualified independent locksmith to replace your key or perform high-security key services at www.aloa.org 13. Toyota strives to build vehicles to match customer interest and thus they typically are built with popular options and option packages. Not all options/packages are available separately and some may not be available in all regions of the country. See toyota.com for information about options/packages commonly available in your area. If you would prefer a vehicle without any or with different options, contact your dealer to check for current availability or the possibility of placing a special order. 14. V6 models only. 15. Standard Bed models only. 16. V8 models only. 17. Long Bed models only. 18. Vehicle Stability Control (VSC) is an electronic system designed to help the driver maintain vehicle control under adverse conditions. It is not a substitute for safe driving practices. Factors including speed, road conditions and driver steering input can all affect whether VSC will be effective in preventing a loss of control. Please see your *Owner's Manual* for further details. 19. Brake Assist is designed to help the driver take full advantage of the benefits of ABS. It is not a substitute for safe driving practices. Braking effectiveness also depends on proper brake-system maintenance and tire and road conditions. 20. Smart Stop Technology operates only in the event of certain simultaneous brake and gas pedal applications. When engaged, the system will reduce engine power to help the brakes bring the vehicle to a stop. Factors including speed, road conditions and driver input can all impact stopping distance. Smart Stop Technology is not a substitute for safe and attentive driving and does not guarantee instant stopping. Please see your *Owner's Manual* for further details. 21. All the airbag (AB) systems are Supplemental Restraint Systems. All ABs (if installed) are designed to inflate only under certain conditions and in certain types of severe collisions: frontal and knee ABs typically inflate in frontal collisions; side and side curtain ABs in side collisions; Roll-Sensing Curtain ABs at a severe tilt degree, roll or lateral G-force. In all other accidents, the ABs will not inflate. To decrease the risk of injury from an inflating AB, always wear seatbelts, sit upright in the middle of the seat as far back as possible and do not lean against the door. Do not put objects in front of an AB or around the seatback. Do not use a rearward-facing child seat in any front passenger seat. The force of an inflating AB may cause serious injury or death. See your *Owner's Manual* for further information/warnings. 22. The Toyota Tire Pressure Monitor alerts the driver when tire pressure is critically low. For optimal tire wear and performance, tire pressure should be checked regularly with a gauge; do not rely solely on the monitor system. See your *Owner's Manual* for details. 23. Trailer-Sway Control (TSC) is an electronic system designed to help the driver maintain vehicle control under adverse conditions. It is not a substitute for safe driving practices. Factors including speed, road conditions and driver steering input can all affect whether TSC will be effective in preventing a loss of control. Please see your *Owner's Manual* for further details. 24. 20-inch performance tires are often expected to experience greater tire wear than conventional tires. Tire life may be substantially less than mileage expectancy, depending upon tires used and driving conditions. 25. Flex Fuel Vehicles not available in every state. In states where available, all 4x4 5.7L V8 models are FFV. Flex Fuel Vehicles use E85, gasoline or a combination of both. Estimated mileage will vary. Consult your dealer for nearest E85 filling stations or see toyota.com for further details. 26. Payload Capacity is the calculation of GVWR minus curb weight and should be used for comparison purposes only. The maximum amount of passenger and cargo weight your vehicle can carry is the Load Carrying Capacity indicated on the label(s) on the driver's doorjamb. 27. Before towing, confirm your vehicle and trailer are compatible, hooked up and loaded properly and that you have any necessary additional equipment. Do not exceed any Weight Ratings and follow all instructions in your *Owner's Manual*. The maximum you can tow depends on the total weight of any cargo, occupants and available equipment. Calculated with new SAE J2807 method. 28. Requires Tow Package. 29. 2013 EPA-estimated mileage. Actual mileage will vary. 30. This floor mat was designed specifically for use in your model and model year vehicle and SHOULD NOT be used in any other vehicle. To avoid potential interference with pedal operation, each mat must be secured with retention hooks/clips. Do not install a floor mat on top of an existing floor mat. 31. Cargo and load capacity limited by weight and distribution. 32. Requires Deck Rail System. 33. Available for vehicles with factory remote keyless entry. 34. The TRD supercharger and TRD performance air intake are to be sold as dealer-installed or over-the-counter options after the retail sale of the vehicle. The supercharger and performance air intake may not be sold to the customer at the same time as the new vehicle and may not be financed together with the new vehicle. Please see the TRD catalog at www.trdusa.com or call 800-688-5912 for a complete list of TRD products and warranty information. Emissions-legal for aftermarket sale via C.A.R.B. Executive Order.

TOYOTA FINANCIAL SERVICES



Toyota helps you get more out of every dollar you spend. By rewarding you for every purchase you make, the Toyota Rewards Visa® adds even more value to doing the things you love.

Turn everything you buy into points to redeem toward parts, accessories or an eligible vehicle purchase or lease at your Toyota dealer. Earn 5 points for every \$1 spent at participating Toyota dealers and 1 point for every \$1 spent everywhere else Visa is accepted.*

Visit www.toyotarewardsvisa.com for complete details.

Toyota Financial Services (TFS)[†] is a leading provider of automotive financial services, offering an extensive line of financing plans along with a variety of vehicle and payment protection products to Toyota customers and dealers in the U.S. For more information on TFS products and services, visit www.toyotafinancial.com

*On approved credit. You must have a valid permanent home address in the 50 United States or the District of Columbia. Terms, conditions and restrictions apply and are fully described in the Toyota Rewards Visa Cardmember Agreement and the Toyota Rewards Program Terms and Conditions received with your card. Points earned are based on net purchases. Points-earning maximums apply and points will expire as described in the Rewards Terms and Conditions. Redemption only available at participating Toyota dealerships in the continental U.S. and Alaska. Points cannot be redeemed for cash. Please contact your participating Toyota dealer for information regarding restrictions your dealer may impose on the use of credit cards related to vehicle purchases or leases. The creditor and issuer of the Toyota Rewards Visa is Toyota Financial Savings Bank. Toyota Financial Services is a service mark used by Toyota Financial Savings Bank.

[†]Toyota Financial Services is a service mark for Toyota Motor Credit Corporation and Toyota Motor Insurance Services, Inc.

WARRANTIES

Every Toyota Car, Truck and SUV is built to exceptional standards. And that's not idle boasting. We back it up with these Limited Warranty Coverages:

Basic: 36 months/36,000 miles (all components other than normal wear and maintenance items).

Powertrain: 60 months/60,000 miles (engine, transmission/transaxle, drive system, seatbelts and airbags).

Rust-Through: 60 months/unlimited miles (corrosion perforation of sheet metal).

Emissions: Coverages vary under Federal and California regulations. Refer to applicable *Warranty and Maintenance Guide* for details.

Accessories: For Genuine Toyota Accessories purchased at the time of the new vehicle purchase, the Toyota Accessory Warranty coverage is in effect for 36 months/36,000 miles from the vehicle's in-service date, which is the same coverage as the Toyota New Vehicle Limited Warranty. For Genuine Toyota Accessories purchased after the new vehicle purchase the coverage is 12 months, regardless of mileage, from the date the accessory was installed on the vehicle, or the remainder of any applicable new vehicle warranty, whichever provides greater coverage, with the exception of car covers. Car covers are warranted for 12 months from the date of purchase and do not assume any coverage under the Toyota New Vehicle Limited Warranty.

You may be eligible for transportation assistance if it's necessary that your vehicle be kept overnight for repairs covered under warranty. Please see your authorized Toyota dealership for further details.

For complete details about Toyota's warranties, please visit www.toyota.com, refer to the applicable *Warranty and Maintenance Guide* or see your Toyota dealer.

Toyota Tundra is designed to meet most off-road driving requirements. Abusive use may result in bodily harm or damage. Toyota encourages responsible operation to protect you, your vehicle and the environment. Seatbelts should be worn at all times. Please do not allow passengers to ride in the cargo area. Towing receiver hitches/ball mount kits are not intended to provide crash protection. For details on vehicle specifications, standard features and available equipment in your area, contact your Toyota dealer. A vehicle with particular equipment may not be available at the dealership. Ask your Toyota dealer to help locate a specifically equipped vehicle.

All information presented herein is based on data available at the time of posting, is subject to change without notice and pertains specifically to mainland U.S.A. vehicles only. Prototypes shown. Actual production vehicles may vary.



For Toyota Mobility program details, go to www.toyota.com/mobility or call the Toyota Customer Assistance Center at 1-800-331-4331

